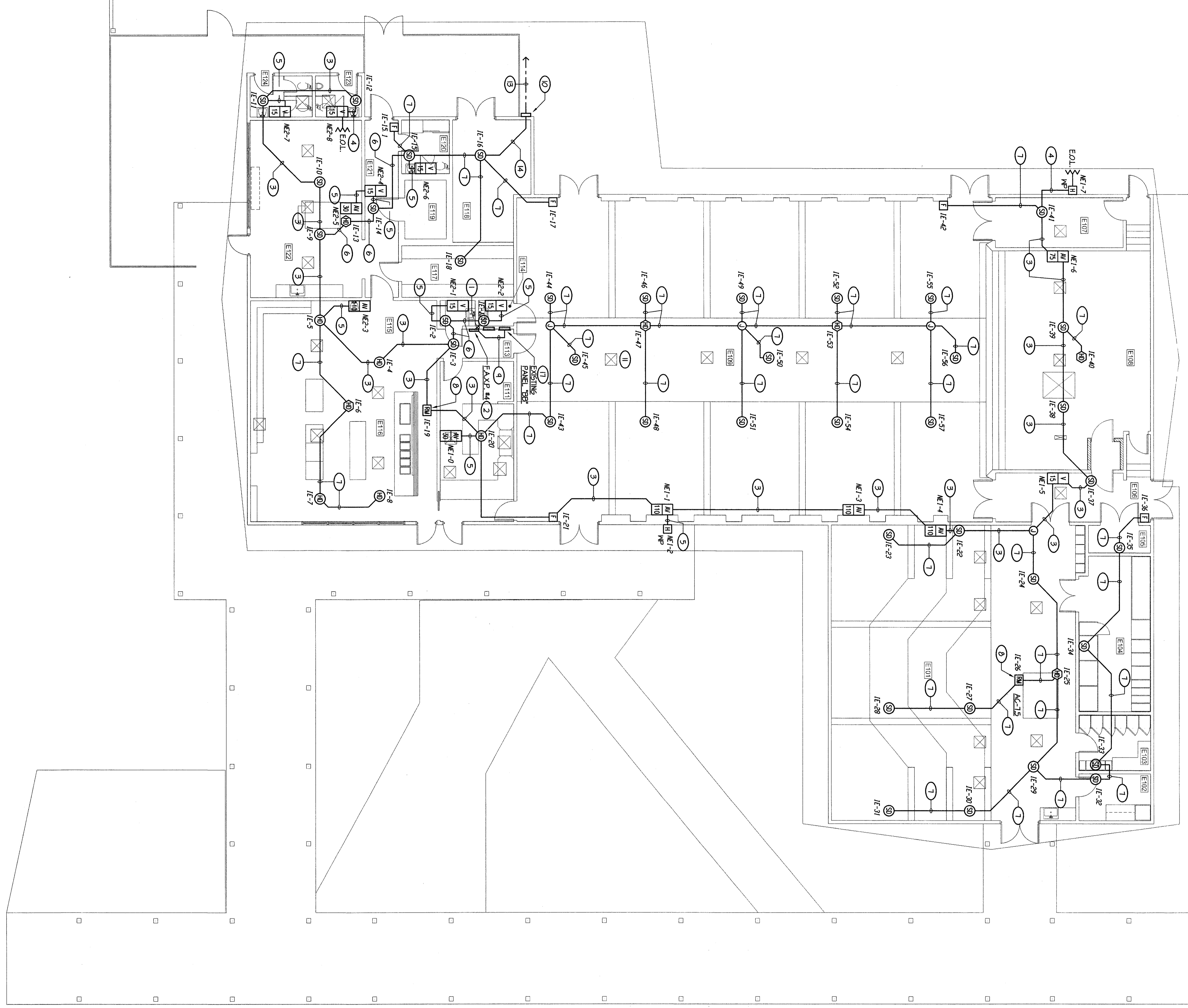
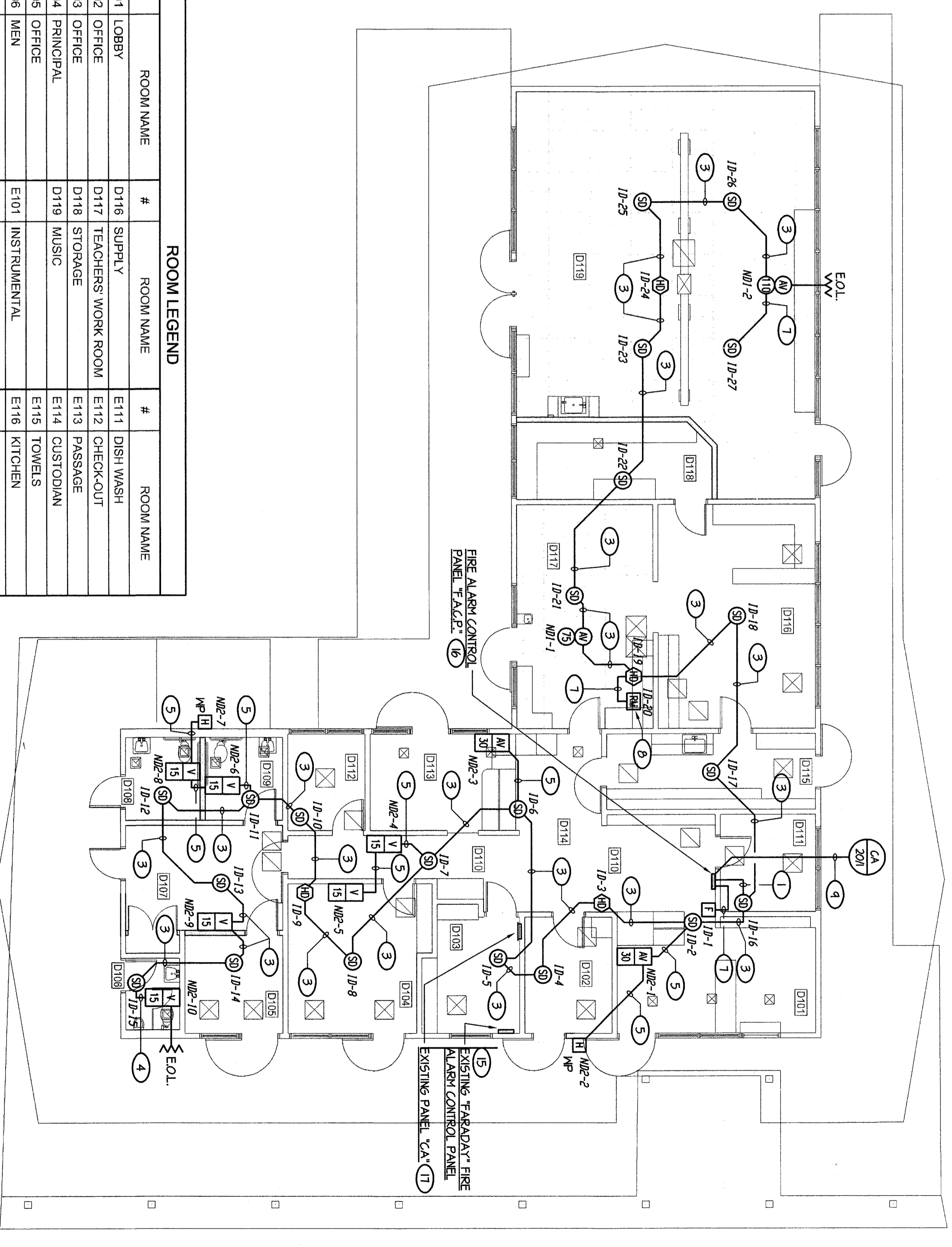


FIRE ALARM PLAN - BLDGS D AND E
1/8" = 1'-0"



#	ROOM NAME	#	ROOM NAME	#	ROOM NAME
D101	LOBBY	D116	SUPPLY	E111	DISH WASH
D102	OFFICE	D117	TEACHERS WORK ROOM	E112	CHECKOUT
D103	OFFICE	D118	STORAGE	E113	PASSAGE
D104	PRINCIPAL	D119	MUSIC	E114	CUSTODIAN
D105	OFFICE	E115	TOWELS		
D106	MEN	E101	INSTRUMENTAL		
D107	VESTIBULE	E102	OFFICE		
D108	WOMEN	E103	UNIFORMS		
D109	TOILET	E104	MECHANICAL		
D110	HALLWAY	E105	MECHANICAL		
D111	OFFICE	E106	PASSAGE		
D112	OFFICE	E107	DIRECTOR		
D113	PUBLIC	E108	MULTIPURPOSE		
D114	AUDIO-VISUAL	E124	WOMEN		
D115	AUDIO-VISUAL	E110	TOILET		



- NOTES (THIS SHEET ONLY)**
- 1) RAN TC - ONE 5/8" CABLE, 4 #12 TO FAXP 44 OR FAXP 45.
 - 2) PROVIDE NEW FIRE ALARM SPONGER PANEL, FAXP 44 - MOUNT HIGH ON WALL JUST BELOW CEILING LEVEL. PROVIDE HOLES AND CONNECT PER DETAIL #2/E-146. INSTALL PER DETAIL #2/E-150.
 - 3) 347C - ONE 5/8" CABLE, 2 #12.
 - 4) 127C - 2 #12.
 - 5) 127C - 4 #12.
 - 6) 347C - ONE 5/8" CABLE, 4 #12.
 - 7) 347C - ONE 5/8" CABLE.
 - 8) PROVIDE A RELAY MODULE FOR UNIT SHUTDOWN OF AC UNIT. FLUSH MOUNT IN CEILING. COORDINATE WITH MECHANICAL CONTRACTOR FOR ALL REPAIRS AND INTERCONNECT. PROVIDE ENGRAVED INVERTATE AT RELAY MODULE. NO UNIT SHUTDOWN.
 - 9) 127C - 2 #12, 1 #12 GND. RAN CONCEALED TO (E) PANEL NOTED. FISH DOWN WALL TO PANEL. AS REQUIRED.
 - 10) PROVIDE RILL CAN ON EXTERIOR WALL PER DETAIL #12/E-150.
 - 11) RAN ALL FEEDERS CONCEALED WHEREVER POSSIBLE. CONTRACTOR TO VERIFY IN CEILING. COORDINATE WITH MECHANICAL CONTRACTOR FOR ALL REPAIRS AND INTERCONNECT. PROVIDE ENGRAVED INVERTATE AT RELAY MODULE. NO UNIT SHUTDOWN.
 - 12) SAME AS NOTE (3) EXCEPT TO EXISTING PANEL, VAC.
 - 13) REFER TO SITE ELECTRICAL PLAN SHEET #E-141 FOR SITE CONTINUATION OF FIRE ALARM FEEDER.
 - 14) TC - ONE 5/8" CABLE.
 - 15) REFER TO 5/40FE OF WORK. NOTE #3 ON SHEET #E-141 FOR EXISTING FIRE ALARM WORK.
 - 16) INSTALL PER DETAIL #2/E-150.
 - 17) PROVIDE DEDICATED 20A 1-PHASE CIRCUIT BREAKER IN (E) PANEL NOTED AND LABEL FIRE ALARM - LEAVE ON - PROVIDE CIRCUIT BREAKER HANDLE LOCK-ON ACCESSORY.

COMPLETE AUTOMATIC FIRE ALARM PLAN SUBMITTAL

THE FIRE ALARM SYSTEM SHOWN ON THESE PLANS HAS BEEN SUBMITTED AND APPROVED BY THE DIVISION OF THE STATE ARCHITECT. ANY SUBSTITUTION OF MATERIALS OR METHODS SHALL BE SUBMITTED AND APPROVED BY THE ARCHITECT. THE DRAWINGS, SEALS AND DEVICES ARE THE PROPERTY OF THE ARCHITECT. NO PART OF THESE PLANS ARE TO BE REPRODUCED OR TRANSMITTED IN ANY FORM OR BY ANY MEANS, ELECTRONIC OR MECHANICAL, INCLUDING PHOTOCOPYING, RECORDING, OR BY ANY INFORMATION STORAGE AND RETRIEVAL SYSTEM, WITHOUT THE WRITTEN PERMISSION OF THE ARCHITECT.

FIRE ALARM PLANS - BLDGS D AND E

SHEET IDENTIFICATION NUMBER
AE-142
OF SHEET

BUILDING KEY PLAN

MARK DATE DESCRIPTION

**116 LYMRIC WAY
BAKERSFIELD
CALIFORNIA
93309**

BAKERSFIELD CITY SCHOOL DISTRICT

MODERNIZATION AT CURRAN MIDDLE SCHOOL

FOR:

ROSE SHING AND ASSOCIATES, INC.

131 S. DUNSMITH - (509) 733-2971
VANDER, CALIFORNIA 92392-6705

IDENTIFICATION STAMP
DIVISION OF STATE ARCHITECT
OFFICE OF REGULATION SERVICES
APPL. 03-107003
FILE # 15-6
AC - F13 - SS -
DATE

LICENCED ARCHITECT
No. C-16835
DEC. 31, 2007
STATE OF CALIFORNIA

DANNY E. OROZCO, AIA
ARCHITECT, S-14728
WILLIAM J. MELBY, AIA
ARCHITECT C-16835
CONSULTANT

5900 WING AVENUE SUITE 200
BAKERSFIELD, CALIFORNIA 93309
TELEPHONE (801) 332-5258
FAXSIMILE (801) 332-4291

ORDIZ MELBY ARCHITECTS, INC.

ARCHITECTS, INC.

ARCHITECTS, INC.

ARCHITECTS, INC.

ARCHITECTS, INC.