

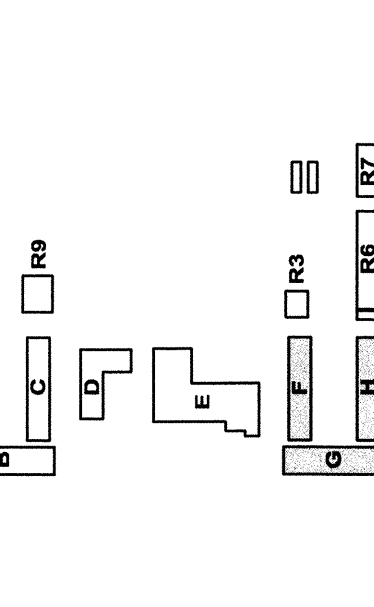
CONSULTANT
 ROSE SING AND ASSOCIATES, INC.
 131 Electrical Consultants
 License No. 53292-2725

IDENTIFICATION STAMP
 DIVISION OF STATE ARCHITECT
 OFFICE OF REGULATION SERVICES
 APPL. 08-107003
 FILE # 15-4

MODERNIZATION AT
CURRAN MIDDLE
SCHOOL
FOR:

BAKERSFIELD
CITY SCHOOL
DISTRICT

1116 LYMRIC WAY
BAKERSFIELD
CALIFORNIA
93309



BUILDING KEY PLAN

MARK	DATE	DESCRIPTION

CAD DRAWING FILE:
 20022480
 JOB NUMBER:
 20022480

DRAWN BY:
ES
 CHECKED BY:
TWR
 CHECK FOR CONFLICTS BEFORE
 REPORT REVISIONS TO THE ARCHITECT.
 THIS DRAWING IS THE PROPERTY OF THE ARCHITECT.
 ORDIZ MELBY ARCHITECTS, INC. 2004

SHEET TITLE
LIGHTING PLAN -
BLDG F, G & H

SHEET IDENTIFICATION NUMBER
AE-123

GENERAL NOTES:
 A. EXAMINE ALL ROOMS OF BUILDINGS F, G AND H IN THE ELECTRICAL DRAWINGS FOR ALL EXISTING AND ALL RELATED JUNCTION BOXES AND IDLE BRANCH CIRCUITING AS REQUIRED TO CLEAR WAY FOR NEW CONSTRUCTION.

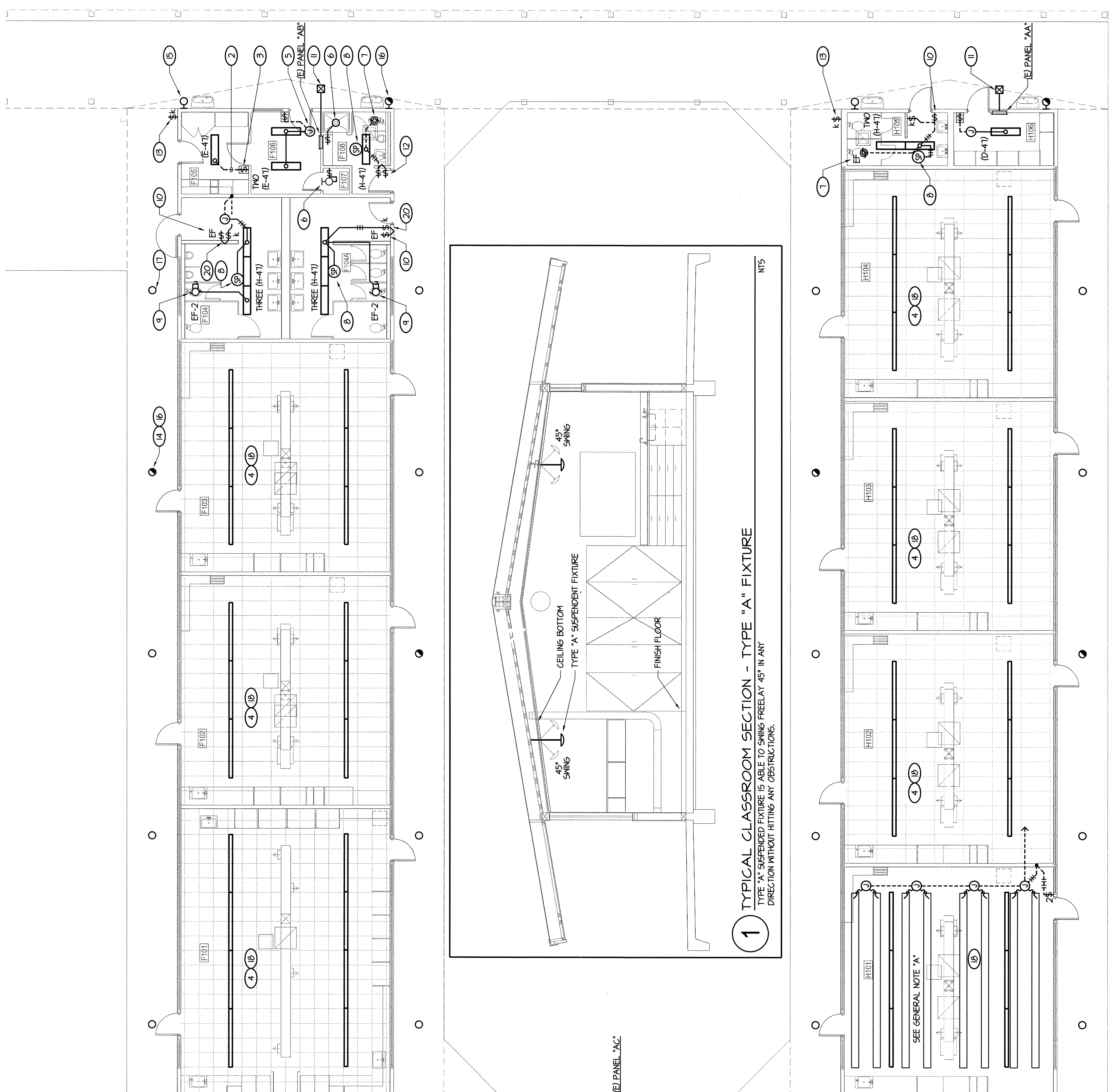
NOTES (THIS SHEET ONLY):

1. DISCONNECT AND REMOVE EXISTING LIGHT FIXTURES AND CONTROLLING DEVICES AS SHOWN AND RECONNECT TO THE EXISTING LIGHTING BRANCH CIRCUIT AND SWITCH LEGS WIRING. TYPICAL UOI. ALL CLASSROOMS HAVE TWO EXISTING LIGHTING CIRCUITS. REMOVE ONLY ONE CIRCUIT PER CLASSROOM. PULL OUT ANY IDLE BRANCH CIRCUIT WIRING NOT USED.
2. EXISTING CONDUIT AND SWITCH LEGS WIRING FROM SWITCH BOX TO ATTIC TO BE REUSED. PULL IN ADDITIONAL SWITCH LEGS CONDUCTOR WHERE REQUIRED WHEN ADDITIONAL SWITCH IS ADDED. TYPICAL UOI.
3. PROVIDE A SINGLE CONTROL WALL OCCUPANCY SENSOR SWITCH. SEE DETAIL 146E-150 FOR SPEC. TYPICAL UOI.
4. REFER TO ROOM #101 FOR EXISTING PENDANT FIXTURES TO BE REMOVED.
5. WHERE NEW FIXTURES ARE INSTALLED IN A DIFFERENT LOCATION FROM THE EXISTING LOCATION, THE SWITCH LEGS WIRING AND EXTEND TO NEAREST AVAILABLE LOCATION AS REQUIRED. TYPICAL.
6. EXISTING LIGHT FIXTURE AND CONTROLLING SWITCH TO REMAIN. VERIFY AND KEEP IN SERVICE. CLEAN AND REPAIR FIXTURE.
7. RECONNECT EXISTING EXHAUST FAN TO SWITCH SAME AS EXISTING CONDITIONS. PROVIDE ANY ADDITIONAL MATERIALS AS REQUIRED. VERIFY EXISTING CONDITIONS PRIOR TO ANY DEMO WORK.
8. PROVIDE A 120V OCCUPANCY SENSOR TO CONTROL LIGHTING CIRCUIT OF THIS ROOM. SEE DETAIL 146E-150 FOR SPEC.
9. CONNECT NEW EXHAUST FAN AND CONTROLLING SWITCH AS REQUIRED PER MECHANICAL DRAWINGS. CONNECT TO SWITCH SEPARATELY FROM LIGHTS UOI.
10. PROVIDE EXHAUST FAN SWITCH AND CONNECT AS REQUIRED PER MECHANICAL DRAWINGS.
11. SAVE AS NOTE 12 EXCEPT FINCH TRIM END WALL ABOVE ATTIC LEVEL AND LOCATE PHOTO CELL ON WALL ABOVE COVER WALL FACING EAST.
12. PROVIDE SEPARATE LIGHT AND EXHAUST FAN CONTROL SWITCHES.
13. EXISTING EXTERIOR LIGHTING KEY SWITCH, REAR OF DEVICE AND RECONNECT EXISTING FEED THROUGH INSIDE BOX. PROVIDE BLANK COVER PLATE AS REQUIRED. RECONNECT THE EXISTING KEY SWITCH WIRING AT PANEL TO THE SWITCH CIRCUIT. SEE NOTE #11.
14. REAR EXISTING EXTERIOR RECESS FIXTURE WITH NEW TYPE "J" FIXTURE AND RECONNECT TO EXISTING WIRING. TYPICAL.
15. REAR EXISTING EXTERIOR WALL MOUNTED FIXTURE WITH NEW TYPE "L" AT SAME LOCATION AND RECONNECT TO EXISTING WIRING. TYPICAL.
16. HALF SHADE SYMBOL DENOTES EXTERIOR FIXTURE TO BE CONTROLLED VIA THE NEW PHOTO CELL CONTROL. NOTE: DISCONNECT FROM THE EXISTING TIME SWITCH CONTROL. TYPICAL.
17. OPEN CLEAR SYMBOL DENOTES EXTERIOR FIXTURE TO BE CONTROLLED VIA THE TIME SWITCH LOCATED IN THE ELECTRICAL PANEL. TYPICAL.
18. REFER TO 1/4" SCALE ENLARGED PLAN DETAIL 146E-154 FOR TYPICAL NEW LIGHTING AND SWITCHING REQUIREMENTS.
19. INSTALL CEILING OCCUPANCY SENSOR AND RELATED POWER SWITCH/SPACE PER DETAIL 146E-150. LOCATE OCCUPANCY SENSOR ON CEILING NEAR WALL CORNER OF ROOM.
20. PROVIDE NEW SWITCH RECESS IN WALL AND CONNECT TO FIXTURES AS SHOWN. FISH DOWN EXISTING WITH FEED AS REQUIRED ON CUT AND PATCH WALL AS REQUIRED TO CONCEAL CONDUIT. VERIFY WITH ARCHITECT FOR WALL FINISH.
21. PROVIDE A PHOTO CELL TO CONTROL THE EXISTING EXTERIOR LIGHTING CIRCUIT OF NOTE #6. LOCATE ON ROOF FACING NORTH. VERIFY CONDUIT ROUTING TO ROOF WITH OWNER AT SITE PRIOR TO ANY WORK.
22. PROVIDE NEW SUSPENDED LIGHTING PER DETAIL 146E-150. DIAL SWITCH INBOARD AND OUTBOARD LAMP.
23. BLANK OFF EXISTING SWITCHES. REMOVE DEVICE AND PULL OUT ANY IDLE WIRING. RECONNECT ANY FEED THROUGH CIRCUIT WIRING.
24. REMOVE EXISTING SURFACE MOUNTED SWITCHES. PROVIDE NEW COMBINATION DEVICE (TWO SWITCHES STACKED ONE ABOVE THE OTHER) AND MOUNT SWITCHES TO EXISTING SURFACE. PROVIDE NEW BRACKET AND WIRING AS REQUIRED. PROVIDE NEW COVER PLATE. PULL OUT ANY IDLE WIRING NOT BEING USED.
25. REMOVE EXISTING "EXPLOSION PROOF" FIXTURES AND SURFACE CONDUIT AND RECONNECT TO NEW WIRING. REMOVE EXISTING WIRING AND RECONNECT TO NEW FIXTURES.
26. PROVIDE EXIT FIXTURE TYPE "X". LOCATE ON CEILING ABOVE DOOR. TYPICAL.

APPROVED
 DIV. OF THE STATE ARCHITECT
 LOS ANGELES BASIN REGIONAL OFFICE
 PL. NO. 3-107003 DATE: FEB. 1.0.2010

ROOM LEGEND

#	ROOM NAME	ROOM NAME
F101	CLASSROOM	G106
F102	CLASSROOM	G107
F103	CLASSROOM	G108
F104	BOYS	G109
F104A	GIRLS	G110
F105	CHECK-OUT	G111
F106	OFFICE	G112
F107	CLOSET	G113
F108	MEN	G114
F109	SHOWER	H101
G101	MECHANICAL	H102
G102	ELECTRICAL	H103
G103	BOOK ROOM	H104
G104	DINING ROOM	H105
G105	GROOMING ALCOVE	H106



1 TYPICAL CLASSROOM SECTION - TYPE "A" FIXTURE
 TYPE "A" SUSPENDED FIXTURE IS ABLE TO SWING FREELY AT 45° IN ANY DIRECTION WITHOUT HITTING ANY OBSTRUCTIONS.

2 TYPICAL CLASSROOM ELEVATION - TYPE "A" FIXTURE
 TYPE "A" SUSPENDED FIXTURE IS ABLE TO SWING FREELY AT 45° IN ANY DIRECTION WITHOUT HITTING ANY OBSTRUCTIONS.

