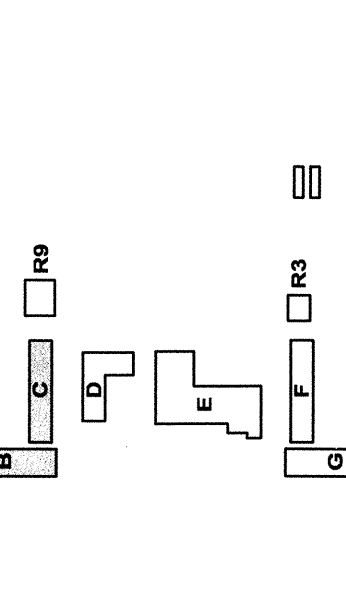


INVESTIGATION STAMP  
 DIVISION OF STATE ARCHITECT  
 OFFICE OF REGULATION SERVICES  
 APPL. 03-107003  
 FILE # 14-5  
 DATE

**MODERNIZATION AT  
 CURRAN MIDDLE  
 SCHOOL  
 FOR:  
 BAKERSFIELD  
 CITY SCHOOL  
 DISTRICT**

1116 LYMRIC WAY  
 BAKERSFIELD  
 CALIFORNIA  
 93309



**BUILDING KEY PLAN**

MARK	DATE	DESCRIPTION

20022480  
 CAD DRAWING FILE  
 DRAWN BY: ES  
 CHECKED BY: TWR  
 DATE: 10/10/03

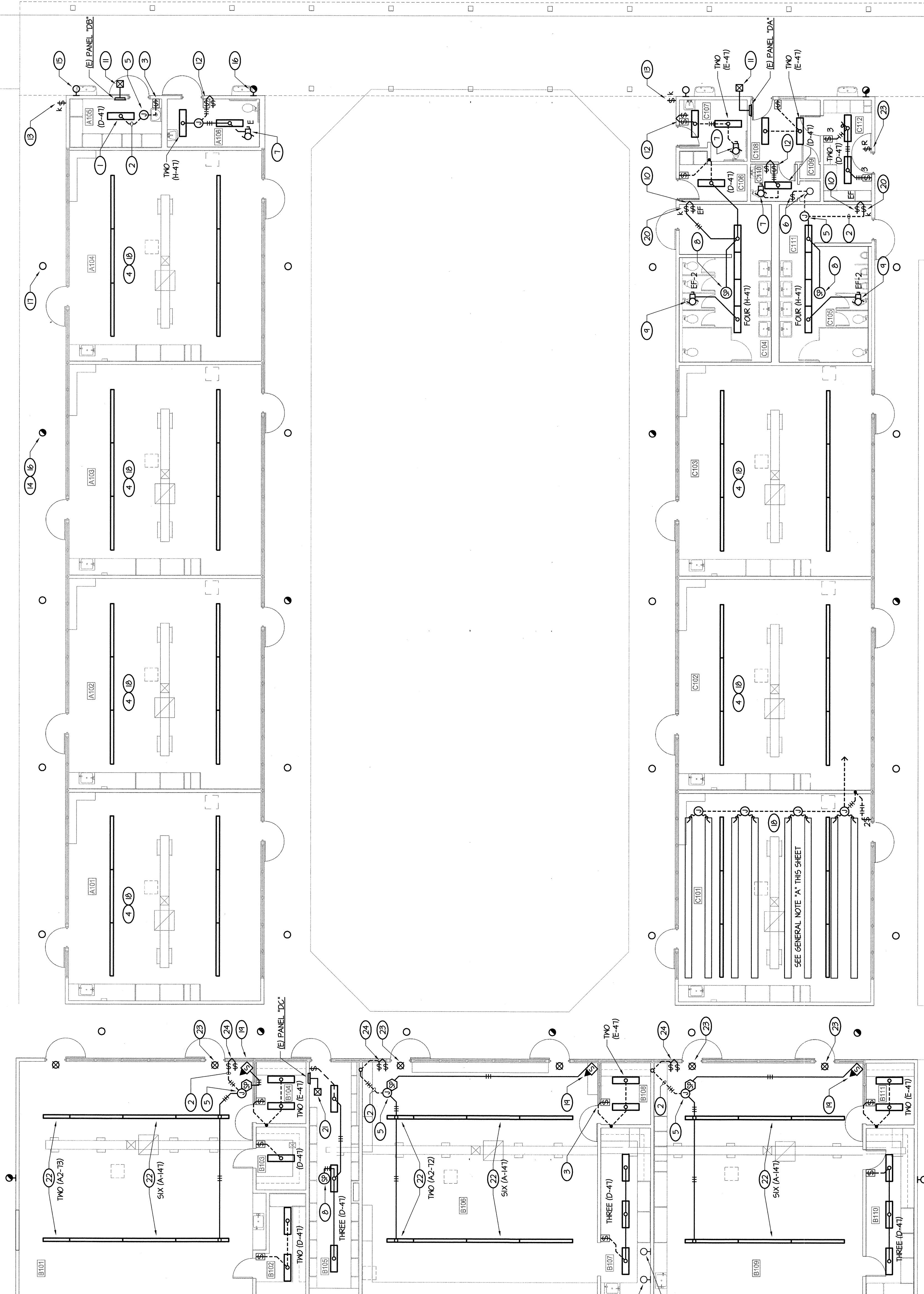
**GENERAL NOTES:**

A. RECALCULATE ALL ROOMS OF BUILDINGS A, B AND C. THE ELECTRICAL CONTRACTOR SHALL PROVIDE ALL EXISTING LIGHT FIXTURES, LIGHT SWITCHES AND ALL RELATED JUNCTION BOXES AND IDLE BRANCH CIRCUITING AS REQUIRED TO CLEAR WAY FOR NEW CONSTRUCTION.

**NOTES (THIS SHEET ONLY):**

1. DISCONNECT AND REMOVE EXISTING LIGHT FIXTURES AND CONTROLLING DEVICES (SWITCHES) AS SHOWN AND RECONNECT TO THE EXISTING LIGHTING BRANCH CIRCUIT AND SWITCH LEGS WIRING. TYPICAL UO/N. ALL CLASSROOMS HAVE TWO EXISTING LIGHTING CIRCUITS. REUSE ONLY ONE CIRCUIT PER CLASSROOM. PULL OUT ANY IDLE BRANCH CIRCUIT WIRING NOT USED.
2. EXISTING CONDUIT AND SWITCH LEGS WIRING FROM SWITCH BOX TO ATTIC TO BE REUSED. PULL IN ADDITIONAL SWITCH LEGS CONDUCTOR WHERE REQUIRED WHEN ADDITIONAL SWITCH IS ADDED. TYPICAL UO/N.
3. PROVIDE A SINGLE CONTROL WALL OCCUPANCY SENSOR SWITCH. SEE DETAIL 4/E-150 FOR SPECS. TYPICAL UO/N.
4. REFER TO ROOM 4/201 FOR EXISTING PENDANT FIXTURES TO BE REMOVED.
5. WHERE NEW FIXTURES ARE INSTALLED IN A DIFFERENT LOCATION FROM THE EXISTING LOCATION, THE EXISTING WIRING SHALL BE REUSED. NEW WIRING AND SWITCH WIRING IN ATTIC SPACE AND EXTEND TO NEW FIXTURE LOCATION AS REQUIRED - TYPICAL.
6. EXISTING LIGHT FIXTURE AND CONTROLLING SWITCH TO REMAIN. VERIFY AND KEEP IN SERVICE. CLEAN AND RELAMP FIXTURE.
7. RECONNECT EXISTING EXHAUST FAN TO SWITCH SAME AS EXISTING CONDITIONS. PROVIDE ADDITIONAL TERMINALS AS REQUIRED. VERIFY EXISTING CONDITIONS PRIOR TO ANY DEVO PWR.
8. PROVIDE A 100V OCCUPANCY SENSOR TO CONTROL LIGHTING CIRCUIT OF THIS ROOM. SEE DETAIL 4/E-150 FOR SPECS.
9. CONNECT NEW EXHAUST FAN AND CONTROLLING SWITCH AS REQUIRED PER MECHANICAL DRAWINGS. CONNECT TO SWITCH SEPARATELY FROM LIGHTS UO/N.
10. PROVIDE EXHAUST FAN SWITCH AND CONNECT AS REQUIRED PER MECHANICAL DRAWINGS.
11. SAME AS NOTE #10 EXCEPT FINCH TRIM END WALL ABOVE ATTIC LEVEL AND LOCATE PHOTO CELL ON WALL ABOVE COVER WALK FACING EAST.
12. PROVIDE SEPARATE LIGHT AND EXHAUST FAN CONTROL SWITCHES.
13. EXISTING EXTERIOR LIGHTING KEY SWITCH. REMOVE DEVICE AND RECONNECT EXISTING FEED THROUGH INSIDE BOX. PROVIDE BLANK COVER PLATE AS REQUIRED. RECONNECT THE EXISTING KEY SWITCH WIRING AT PANEL TO THE SWITCH CIRCUIT. SEE NOTE #11.
14. REPLACE EXISTING EXTERIOR RECESS FIXTURE WITH NEW TYPE "J" FIXTURE AND RECONNECT TO EXISTING WIRING. TYPICAL.
15. REPLACE EXISTING EXTERIOR WALL MOUNTED FIXTURE WITH NEW TYPE "L" AT SAME LOCATION AND RECONNECT TO EXISTING WIRING. TYPICAL.
16. WALL GANGE SWITCH. REMOVE EXISTING FIXTURE TO BE CONTROLLED VIA THE NEW PHOTO CELL CONTROL. NOTE DISCONNECT FROM THE EXISTING SWITCH CIRCUIT. TYPICAL.
17. OPEN CLEAR SPACE. REMOVE EXTERIOR FIXTURE TO BE CONTROLLED VIA THE TYPE SWITCH LOCATED IN THE ELECTRICAL PANEL. TYPICAL.
18. REFER TO TYPICAL CLASSROOM LIGHTING PLAN ON SHEET 4/E-154 FOR NEW LIGHTING AND SWITCHING REQUIREMENTS.
19. MOUNT OCCUPANCY SENSOR AND RESPECTIVE SWITCHPACK PER DETAIL 4/E-150. LOCATE OCCUPANCY SENSOR ON CEILING AND NEAR CORNER OF ROOM.
20. PROVIDE NEW SWITCH RECESS IN WALL AND CONNECT TO FIXTURES AS SHOWN. FISH DOWN EXISTING WITH FEED AS REQUIRED OR CUT AND PATCH WALL AS REQUIRED TO CONCEAL CONDUIT. VERIFY WITH ARCHITECT FOR WALL FINISH.
21. PROVIDE A PHOTO CELL TO CONTROL THE EXISTING EXTERIOR LIGHTING CIRCUIT OF NOTE #6. LOCATE ON ROOF FACING NORTH. VERIFY CONDUIT ROUTING TO ROOF WITH OWNER AT SITE PRIOR TO ANY WORK.
22. PROVIDE NEW SUPERSEDED LIGHTING PER DETAIL 4/E-150. DIAL SWITCH INBOARD AND OUTBOARD LAMP.
23. PROVIDE EXIT FIXTURE TYPE "X". LOCATE ON CEILING ABOVE DOOR. TYPICAL.
24. REMOVE EXISTING SURFACE MOUNTED SWITCHES. PROVIDE NEW COMBINATION DEVICE (TWO SWITCHES STACKED ONE ABOVE THE OTHER) AND MOUNT SWITCHES IN EXISTING RECESS SINGLE GANG BOX AND RECONNECT TO EXISTING WIRING. PROVIDE NEW COVER PLATE. PULL OUT ANY IDLE WIRING NOT BEING USED.

APPROVED  
 DIV. OF THE STATE ARCHITECT  
 LOS ANGELES BASIN REGIONAL OFFICE  
 DATE: 10/10/03



**ROOM LEGEND**

#	ROOM NAME	#	ROOM NAME
A101	CLASSROOM	B110	WARDROBE
A102	CLASSROOM	B111	OFFICE
A103	CLASSROOM	C101	CLASSROOM
A104	CLASSROOM	C102	CLASSROOM
A105	JANITOR	C103	CLASSROOM
A106	MEN	C104	GIRLS
B101	CLASSROOM	C105	BOYS
B102	SUPPLY	C106	SUPPLY
B103	STORE ROOM	C107	WOMEN
B104	OFFICE	C108	OFFICE
B105	BOOK ROOM	C109	CLOSET
B106	TECH ROOM	C110	TOILET
B107	ALCOVE	C111	SHOWER
B108	OFFICE	C112	CHECK-OUT
B109	SCIENCE ROOM		

**LIGHTING PLAN - BLDGS A, B AND C**  
 1/8" = 1'-0"



0' 4' 8' 16'