

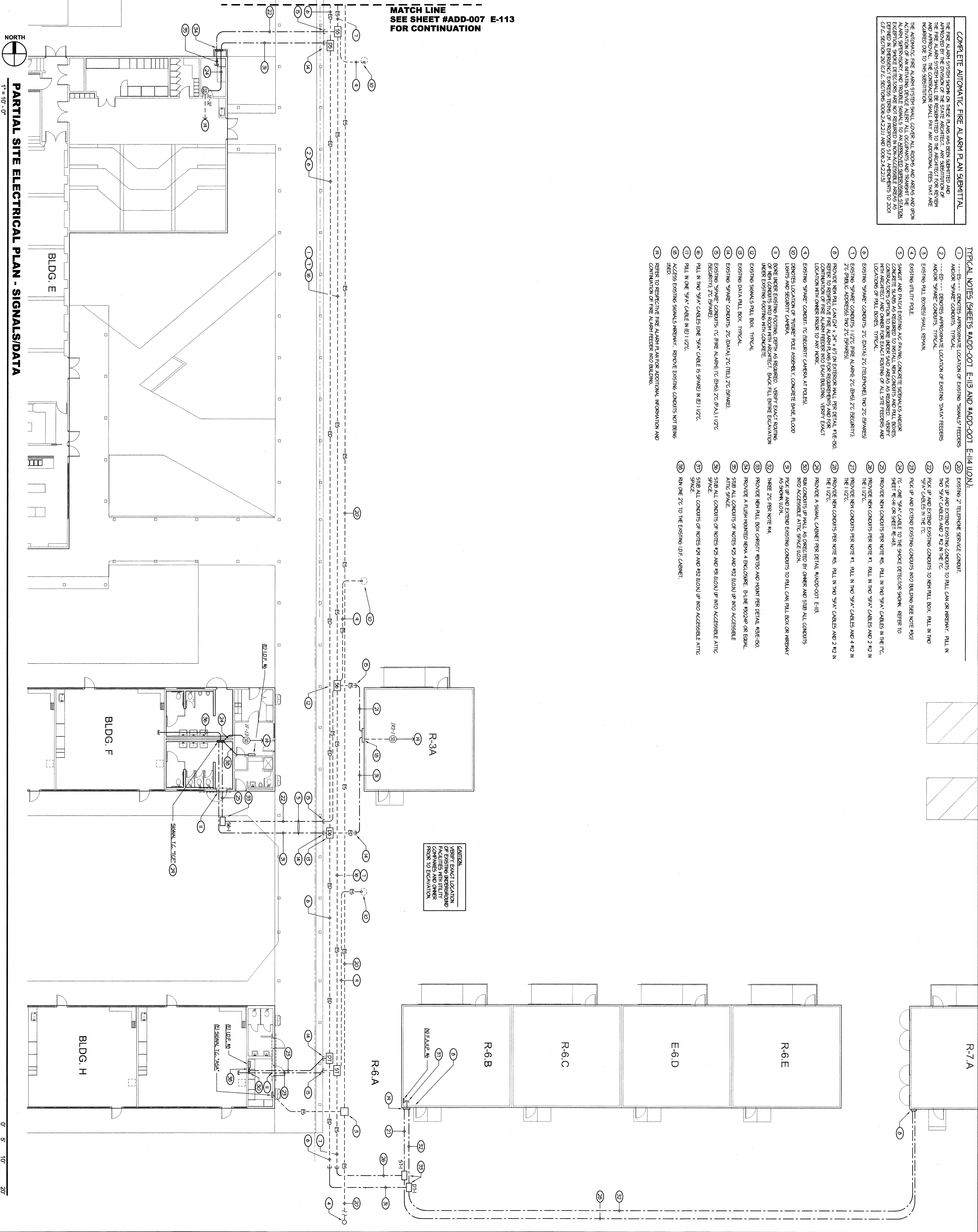
COMPLETE AUTOMATIC FIRE ALARM PLAN SUBMITTAL

THE FIRE ALARM SYSTEM SHOWN ON THESE PLANS HAS BEEN SUBMITTED AND APPROVED BY THE DIVISION OF THE STATE ARCHITECT. ANY SUBSTITUTION OF THE FIRE ALARM SYSTEM SHALL BE REFERENCED TO THE ARCHITECT FOR REVIEW AND APPROVAL. THE CONTRACTOR SHALL PAY AN ADDITIONAL FEE THAT ARE ASSIGNED BY THE DIVISION.

THE AUTOMATIC FIRE ALARM SYSTEM SHALL COVER ALL ROOMS AND AREAS AND UPON ACTIVATION OF ANY MANUAL DEVICE ALERT ALL OCCUPANTS AND THROUGH THE ACTIVATION OF THE SYSTEM SHALL NOTIFY THE FIRE DEPARTMENT AND THE LOCAL FIRE EXTINGUISHMENT AGENCY. THE SYSTEM SHALL BE INSTALLED IN ACCORDANCE WITH THE CALIFORNIA FIRE ALARM ACT AND THE CALIFORNIA FIRE ALARM REGULATIONS. EXCEPTION SPACE DETECTORS ARE NOT REQUIRED IN NON-ACCESSIBLE AREAS AS DEFINED IN BERSBURY EXPRESS TERMS OF PROPOSED SFH. AMENDMENTS TO 2001 C.F.C. SECTION 210 (C.F.C. SECTION 008.24.22.11 AND 008.24.22.15)

- TYPICAL NOTES (SHEETS #ADD-001 E-113 AND #ADD-001 E-114 UO/L):**
- 1) --- ES --- DENOTES APPROXIMATE LOCATION OF EXISTING SIGNALS/FEEDERS AND/OR SPARE CONDUITS. TYPICAL.
 - 2) --- ED --- DENOTES APPROXIMATE LOCATION OF EXISTING DATA FEEDERS AND/OR SPARE CONDUITS. TYPICAL.
 - 3) EXISTING RAIL BOXES SHALL REMAIN.
 - 4) EXISTING UTILITY POLE.
 - 5) SPLIT AND PULL EXISTING 4" PLUMB CONCRETE SPURTS AND/OR CONCRETE SHAFTS AS REQUIRED TO INSTALL NEW CONDUITS AND RAIL BOXES. CONTRACTORS OPTION TO BORE UNDER SAID AREAS AS REQUIRED. VERIFY WITH ARCHITECT AND OWNER FOR EXACT ROUTING OF ALL SITE FEEDERS AND LOCATION OF RAIL BOXES. TYPICAL.
 - 6) EXISTING SPARE CONDUITS, 2" (DATA), 2" (TELEPHONE), TWO 2" (SPARES).
 - 7) EXISTING SPARE CONDUITS, 1 1/2" (FIRE ALARM), 2" (BHS), 2" (SECURITY), 2" (FIBER), (SPARES), TWO 2" (SPARES).
 - 8) PROVIDE NEW RAIL CAN (24" x 24" x 6") ON EXTERIOR WALL PER DETAIL #19-E-150. REFER TO RESPECTIVE FIRE ALARM PLAN FOR REQUIREMENTS AND FOR LOCATION WITH OWNER PRIOR TO ANY WORK.
 - 9) EXISTING SPARE CONDUIT, 1" (SECURITY CAMERA AT POLES).
 - 10) DENOTES LOCATION OF "FINNER" POLE ASSEMBLY, CONCRETE BASE, FLOOR LIGHTS AND SECURITY CAMERA.
 - 11) BORE UNDER EXISTING FOOTING, OPEN UP AS REQUIRED. VERIFY EXACT ROUTING OF NEW CONDUITS INTO ROOM WITH ARCHITECT. BACK-FILL ENTIRE EXCAVATION UNDER EXISTING FOOTING WITH CONCRETE.
 - 12) EXISTING SIGNALS RAIL BOX. TYPICAL.
 - 13) EXISTING SIGNALS RAIL BOX. TYPICAL.
 - 14) EXISTING SPARE CONDUITS, 2" (DATA), 2" (FIBER), 2" (SPARE).
 - 15) EXISTING SPARE CONDUITS, 1" (FIRE ALARM), 1" (BHS), 2" (F.A.), 1 1/2" (SECURITY), 2" (SPARE).
 - 16) RAIL IN TWO 3" x 4" CABLES (ONE 3" x 4" CABLE IS SPARE) IN ED 1 1/2".
 - 17) RAIL IN ONE 3" x 4" CABLE IN ED 1 1/2".
 - 18) ACCESS EXISTING SIGNALS WIREWAY. REMOVE EXISTING CONDUITS NOT BEING USED.
 - 19) REFER TO RESPECTIVE FIRE ALARM PLAN FOR ADDITIONAL INFORMATION AND CONTINUATION OF THE ALARM FEEDER INTO BUILDING.
 - 20) EXISTING 2" TELEPHONE SERVICE CONDUIT.
 - 21) RACK UP AND EXTEND EXISTING CONDUITS TO RAIL CAN OR WIREWAY. RAIL IN TWO 3" x 4" CABLES AND 2 #2 IN THE TC.
 - 22) RACK UP AND EXTEND EXISTING CONDUITS TO NEW RAIL BOX. RAIL IN TWO 3" x 4" CABLES IN THE TC.
 - 23) RACK UP AND EXTEND EXISTING CONDUITS INTO BUILDING (SEE NOTE #20).
 - 24) TC - ONE 3" x 4" CABLE TO THE SMOKE DETECTOR ROOM. REFER TO SHEET E-114 OR SHEET E-143.
 - 25) PROVIDE NEW CONDUITS PER NOTE #5. RAIL IN TWO 3" x 4" CABLES IN THE TC.
 - 26) PROVIDE NEW CONDUITS PER NOTE #1. RAIL IN TWO 3" x 4" CABLES AND 2 #2 IN THE 1 1/2".
 - 27) PROVIDE NEW CONDUITS PER NOTE #1. RAIL IN TWO 3" x 4" CABLES AND 4 #2 IN THE 1 1/2".
 - 28) PROVIDE NEW CONDUITS PER NOTE #5. RAIL IN TWO 3" x 4" CABLES AND 2 #2 IN THE 1 1/2".
 - 29) PROVIDE A SIGNAL CABINET PER DETAIL #ADD-001 E-113.
 - 30) RAIL CONDUITS UP WALL AS DIRECTED BY OWNER AND SHIB ALL CONDUITS INTO ACCESSIBLE ATTIC SPACE UO/L.
 - 31) RACK UP AND EXTEND EXISTING CONDUITS TO RAIL CAN, RAIL BOX OR WIREWAY AS SHOWN UO/L.
 - 32) THREE 2" PER NOTE #4.
 - 33) PROVIDE NEW RAIL BOX CROSBY #B130 AND HOAT PER DETAIL #19-E-150.
 - 34) PROVIDE A FIBER HOATED BUNA 4 ENCLASURE. BLINE #304P OR EQUAL.
 - 35) SHIB ALL CONDUITS OF NOTES #25 AND #32 UO/L UP INTO ACCESSIBLE ATTIC SPACE.
 - 36) SHIB ALL CONDUITS OF NOTES #25 AND #31 UO/L UP INTO ACCESSIBLE ATTIC SPACE.
 - 37) SHIB ALL CONDUITS OF NOTES #29 AND #32 UO/L UP INTO ACCESSIBLE ATTIC SPACE.
 - 38) RAIL ONE 2" TO THE EXISTING IDF CABINET.

MATCH LINE
SEE SHEET #ADD-007 E-113
FOR CONTINUATION



CAUTION
VERIFY EXACT LOCATION OF EXISTING WIREWAYS, CONDUITS AND OTHER COMPANES AND OWNER PRIOR TO EXCAVATION.

ORDIZ MELBY ARCHITECTS, INC.

500 HIND AVENUE SUITE 200
BAKERSFIELD, CALIFORNIA 93308
TELEPHONE (805) 832-2266
FACSIMILE (805) 832-4291

NO. C-14883
DEC. 31, 2009
STATE OF CALIFORNIA

DANNY E. ARON, AIA
WILLIAM J. WELBY, AIA
ARCHITECTS
CONSULTANT

Rose Signal Associates, Inc.
131 S. Dunsmuir - (509) 733-3971
Vancouver, British Columbia V6C 2R2-8705

IDENTIFICATION STAMP
DIVISION OF THE STATE ARCHITECT
OFFICE OF REGULATION SERVICES
APPL. 03-107003
FILE # 15-6
AC FLS SS
DATE

MODERNIZATION AT
CURRAN MIDDLE
SCHOOL
FOR:
BAKERSFIELD
CITY SCHOOL
DISTRICT
1166 LYMRIC WAY
BAKERSFIELD
CALIFORNIA
93309

MARK	DATE	DESCRIPTION

JOB NUMBER: 2002480
CADD DRAWING FILE:
DRAWING BY: ES
CHECKED BY: TWB
DATE: 01/10/08

CHECK AND VERIFY ALL DIMENSIONS BEFORE REPORT DISCREPANCIES TO THE ARCHITECT. THE DRAWINGS, DATA AND DESIGN ARE THE PROPERTY OF THE ARCHITECT. ORIGINAL CONTRACT: NO. 2004

PARTIAL SITE ELECTRICAL PLAN - SIGNALS/DATA
SHEET IDENTIFICATION NUMBER
ADD-007
E-114
SHEET 1 OF 1