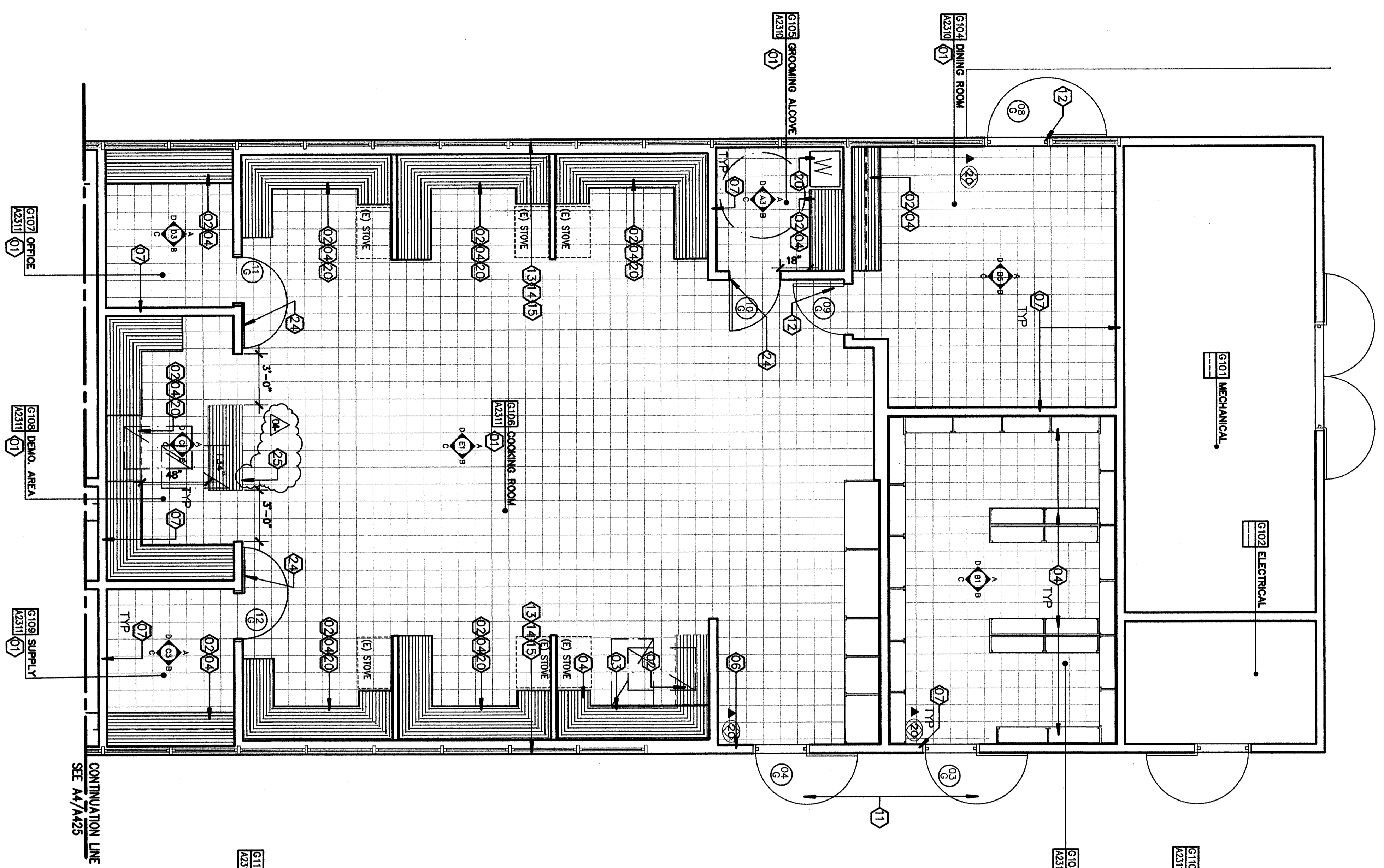
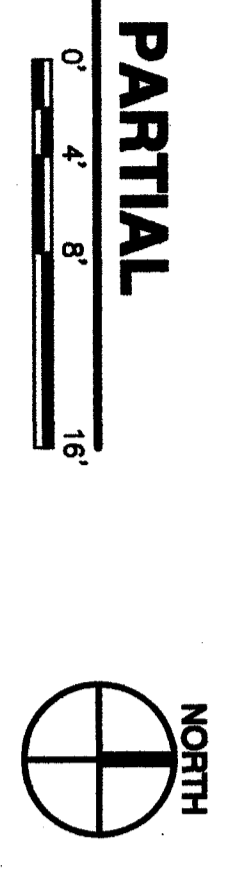
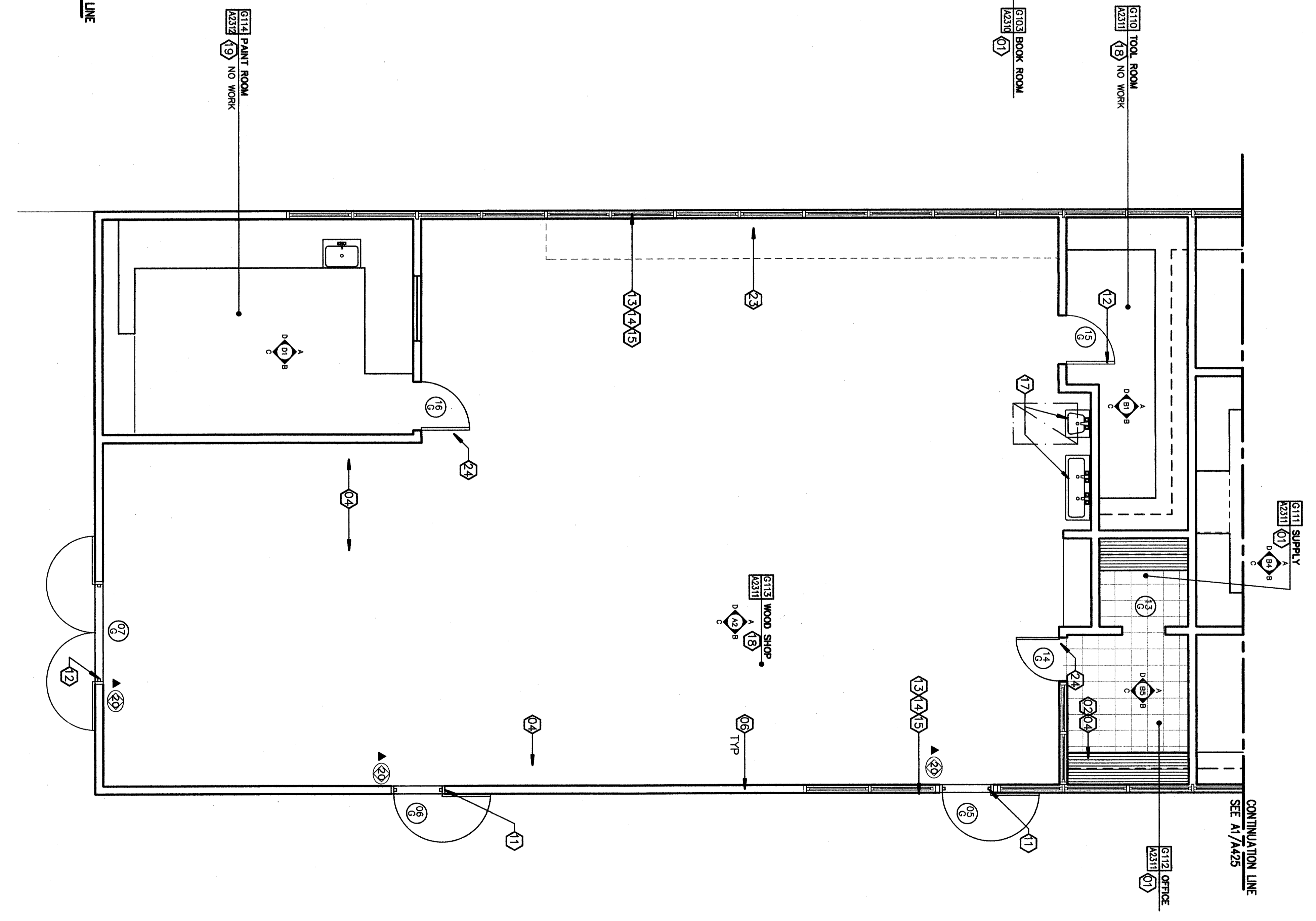


A1
 BUILDING 'G' PARTIAL
 1/4" = 1'-0"



A4
 BUILDING 'G' PARTIAL
 1/4" = 1'-0"



KEYNOTES
 THIS SHEET ONLY

- 01 PROVIDE/INSTALL RESILIENT TILE FLOORING W/RTSB. PROVIDE TRANSITION STRIPS BETWEEN FLOOR FINISH CHANGES (WHERE OCCURS).
- 02 REMOVE/REPLACE (E) LINO COUNTER W/CORIAN COUNTERTOP W/8" SPLASH (LINO). CHALK AT WALL.
- 03 REPLACE EXISTING SINK CABINET WITH ADA COMPLIANT SINK CABINET TYPICAL ALL SINK CABINETS.
- 04 (E) CABINET TO REMAIN. REMOVE DOOR AND DRAWER PULLS. SAND BUILT-UP PAINT. FILL DAMAGED AREAS. PREP & PAINT- REINSTALL HARDWARE.
- 05 PROVIDE/INSTALL PAPER TOWEL DISPENSER- SEE SPECIFICATIONS.
- 06 PATCH/FILL DAMAGED WALLS AS REQUIRED. PREP- PAINT
- 07 PATCH/FILL DAMAGED WALLS AS REQUIRED. PREP- PAINT
- 08 REMOVE/REPLACE (E) TACKBOARDS-SEE SPECIFICATIONS
- 09 REMOVE/REPLACE (E) TACKBOARDS-SEE SPECIFICATIONS
- 10 (E) DOOR/PFRAME TO REMAIN. REPLACE HARDWARE W/ ACCESSIBLE HARDWARE. SEE DOOR SCHEDULE. SAND/PREPARE DOOR SURFACE. PAINT EXTERIORS. RE-STAIN PREVIOUSLY STAINED AREAS WHERE OCCUR.
- 11 (E) DOOR/PFRAME TO REMAIN. SEE DOOR SCHEDULE. SAND/PREPARE DOOR SURFACE. PAINT EXTERIORS. RE-STAIN PREVIOUSLY STAINED AREAS WHERE OCCURS.
- 12 (E) DOOR/PFRAME TO REMAIN. SEE DOOR SCHEDULE. FILL DAMAGED AREAS. W/RTSB COUSING, TRIME/PANIT.
- 13 (E) WINDOWS CLEAN/PFRAME TUBE STEEL MULLIONS-PAINT
- 14 (E) WINDOWS CLEAN/PFRAME PAINTED METAL WINDOW FRAME-PAINT
- 15 (E) WINDOWS CLEAN/PFRAME WOOD TRIM (JAMB/SILL/HEAD W/OCCURS)-PAINT.
- 16 REMOVE (E) RUBBER BASE (WHERE OCCURS).
- 17 REMOVE (E) TRUSS SINK. PROVIDE/INSTALL WALL MOUNTED H.C. ACCESSIBLE LAV & TRUSS CLEAN UP SINK-CONNECT TO (E) SUPPLY/WASTE LINES-SEE PLUMBING DIVS. BREAK OUT TILE AS REQUIRED FOR INSTALLATION OF BLOCKING FOR LAVS- PATCH TILE-W/RTSB FINISHER.
- 18 (E) WOOD FLOOR FLOOR TO REMAIN-CLEAN LIGHTLY SAND & SEAL.
- 19 (E) CONCRETE FLOOR TO REMAIN-NO WORK.
- 20 PATCH-OFF (E) PLUMBING AT WALL.
- 21 (E) G. I. COUNTERTOP TO REMAIN.
- 22 (E) WALL MOUNT TV/BARCKET TO REMAIN.
- 23 (E) WOOD COUNTERTOP TO REMAIN.
- 24 PROVIDE/INSTALL S.C. DOOR/H.M. FRAME/ACCESSIBLE HARDWARE-SEE FINISH & DOOR SCHEDULE.
- 25 (E) CABINET TO REMAIN. REMOVE DOOR AND DRAWER PULLS. SAND ALL SURFACES. (DOORS, DRAWERS, SHELVES, ETC.) TO REMOVE ALL HARDWARE. REMOVE AND REPLACE EXISTING COUNTERTOP WITH NEW COUNTERTOP PER SPECIFICATIONS.

Item No. 27: Refer to Sheet A-425
 H/W #4

Item No. 27: Refer to Sheet A-425
 H/W #4

LEGEND

- EXISTING 2x6 STUD WALL
- NEW 2x6 @ 16" o/c STUD WALL
- NEW PLASTIC LAMINATE COUNTERTOP
- RESILIENT TILE FLOORING
- FIRE EXTINGUISHER @ 48" TO CENTER OF HANDLE
- DOOR SCHEDULE SEE DETAIL AS/A501
- EXTERIOR ELEVATION SYMBOL
- ROOM NUMBER
- INTERIOR ELEVATION SYMBOL
- ROOM NUMBER
- DETAIL NUMBER
- SHEET NUMBER
- WINDOW SYMBOL
- WINDOW NUMBER
- SECTION NUMBER
- SHEET NUMBER

ACCESSIBLE CLEARANCE LEGEND

- NOTE: ALL DIMENSIONS ARE CLEARANCE TO FINISH MATERIALS
- 5'-0" DIAMETER TURNING ORACLE
 - 30"x48" CLEAR AREA TYP. U.N.O.

ORDIZ MELBY ARCHITECTS, INC.
 5600 WING AVENUE SUITE 280
 BAKERSFIELD, CALIFORNIA 93309
 TELEPHONE (801) 832-2298
 FACSIMILE (801) 832-2391

DANNY E. ORTIZ, AIA
 ARCHITECT 04/178
 WILLIAM J. MERRY, AIA
 ARCHITECT C-161855
 CONSULTANT

IDENTIFICATION STAMP
 DIVISION OF STATE ARCHITECT
 OFFICE OF REGULATION SERVICES
 APRIL 09-107003
 FILE # 15-6
 AC _____ FS _____ SS _____
 DATE _____

MODERNIZATION AT CURRAN MIDDLE SCHOOL FOR:
BAKERSFIELD CITY SCHOOL DISTRICT
 1116 LYNNIC WAY
 BAKERSFIELD CALIFORNIA 93309

BUILDING KEY PLAN

MARK	DATE	DESCRIPTION
CD	08/29/07	APPENDIX 1
AD	08/11/07	APPENDIX 2
AD	11/01/07	APPENDIX 3

JOB NUMBER: 2002480
 DATE: 08/29/07 PM
 DRAWING BY: [Signature]
 CHECKED BY: [Signature]
 CHECK AND SEAL: ALL DIMENSIONS BEFORE REPORT PROCEED WITH THE WORK. THE DRAWINGS, TEXT, AND DESIGN ARE THE PROPERTY OF THE ARCHITECT AND SHALL BE KEPT IN CONFIDENCE. ORIGINAL ARCHITECT: INC. 2002

PARTIAL FLOOR PLAN BUILDING G
 SHEET IDENTIFICATION NUMBER
A-425
 SHEET 38 OF 46