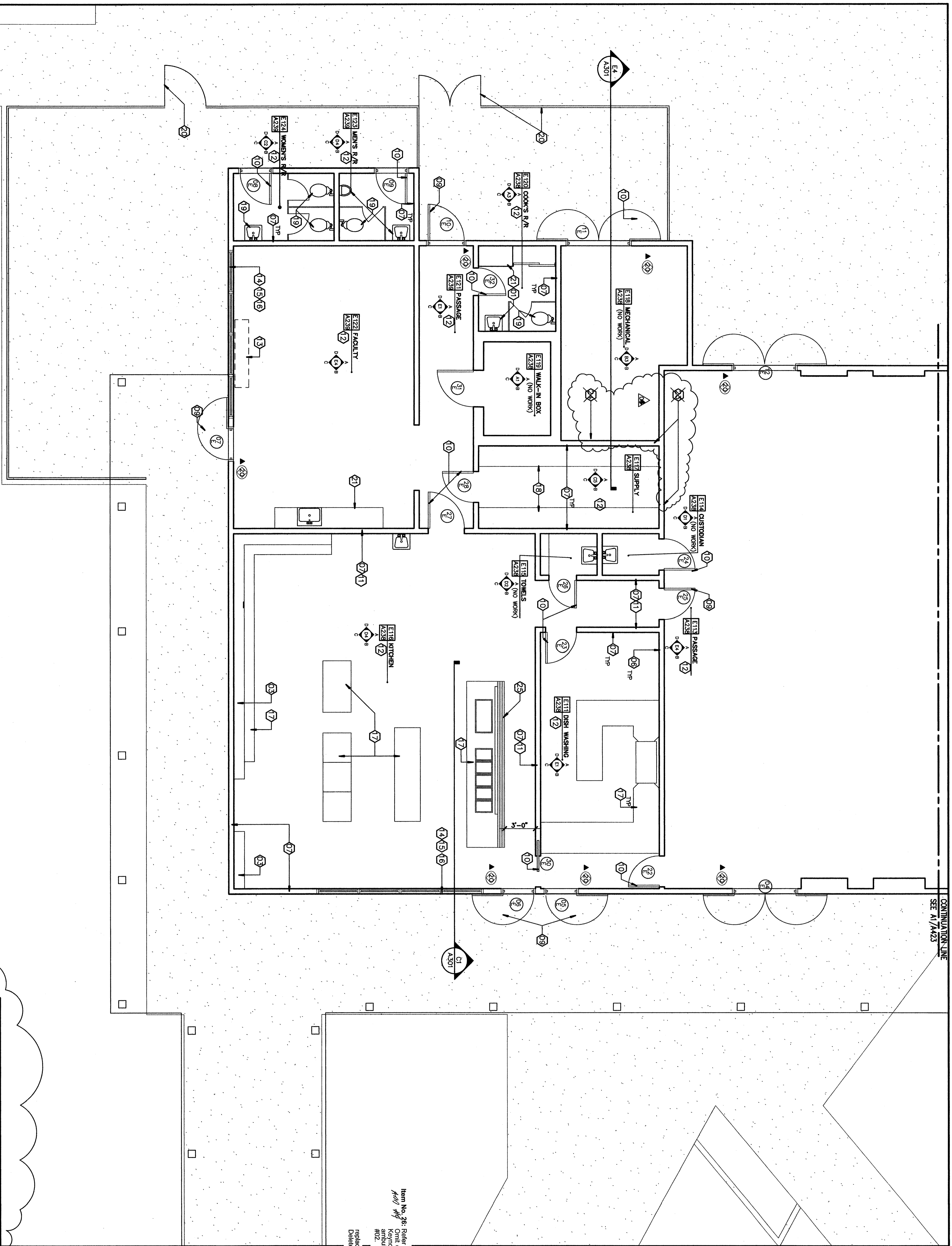
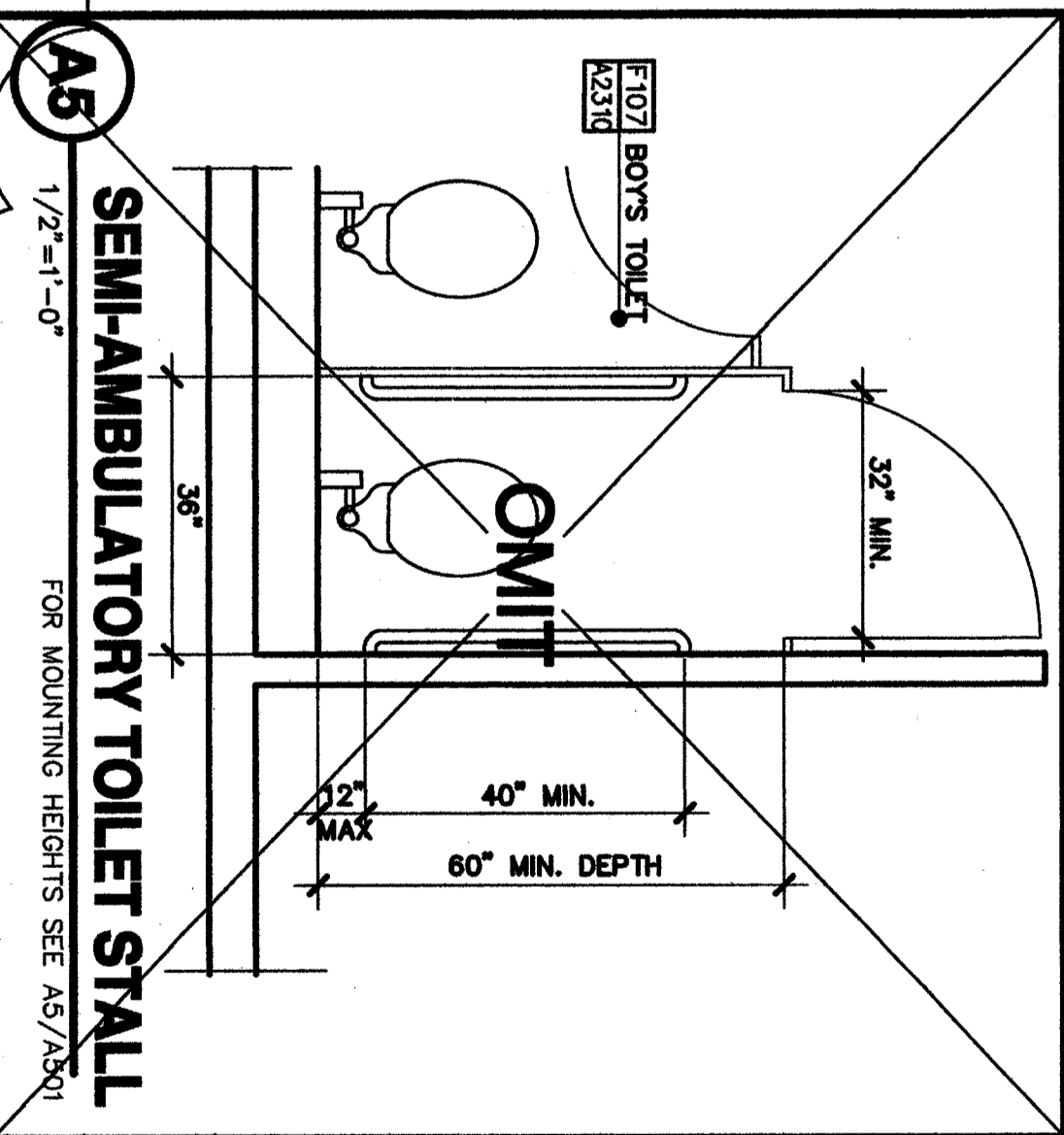


A1 PARTIAL FLOOR PLAN BUILDING 'E'
 1/8"=1'-0"



CONTINUATION LINE
 SEE A1/7A23



A5 SEMI-AMBULATORY TOILET STALL
 1/2"=1'-0"
 FOR MOUNTING HEIGHTS SEE A5/201

KEYNOTES
 THIS SHEET ONLY

- 01 REMOVE/REPLACE (E) LINO COUNTERTOP (OR PLASTIC LAMINATE COUNTERTOP) W/CORIAN COUNTERTOP W/6" SPLASH. (UNO) CALLUX @ WALL
- 02 REPLACE EXISTING SINK CABINET WITH ADA COMPLIANT SINK CABINET TYPICAL ALL SINK CABINETS
- 03 (E) CABINET TO REMAIN. REMOVE DOOR AND DRAWER PULLS. SAND BUILT-UP PAINT. FILL DAMAGED AREAS. PREP & PAINT-REINSTALL HARDWARE
- 04 REMOVE/REPLACE (E) COUNTERTOP W/CORIAN COUNTERTOP W/6" SPLASH (UNO). CALLUX AT WALL. REMOVE/REPLACE SINK UNIT SEE PLUMBING DWGS.
- 05 PROVIDE/INSTALL PAPER TOWEL DISPENSER-SEE SPECIFICATIONS
- 06 (E) CERAMIC TILE WAINSCOT TO REMAIN
- 07 PATCH/FILL DAMAGED WALLS AS REQUIRED. PREP-PAINT
- 08 REMOVE/REPLACE (E) TACKBOARDS-SEE SPECIFICATIONS
- 09 (E) DOOR/FRAME TO REMAIN. REPLACE HARDWARE W/ ACCESSIBLE HARDWARE. SEE DOOR SCHEDULE. SAND PREPARE DOOR SURFACE. PAINT EXTERIORS. RE-STAIN PREVIOUSLY STAINED AREAS WHERE OCCURS.
- 10 (E) DOOR/FRAME TO REMAIN. SET DOOR SCHEDULE. SAND PREPARE DOOR SURFACE. PAINT EXTERIORS. RE-STAIN PREVIOUSLY STAINED AREAS WHERE OCCURS.
- 11 (E) VINYL WAINSCOT TO REMAIN.
- 12 (E) FLOORING TO REMAIN.
- 13 REMOVE ABANDON HEATER UNIT. CAP ALL SUPPLY/RETURN LINES BEING WALL. REMOVE VENT OPENING @ EXTERIOR WALL. INFL. PAINT.
- 14 ● WINDOWS CLEAN/PRIIME TUBE STEEL WALLIONS-PAINT
- 15 ● WINDOWS CLEAN/PRIIME PAINTED METAL WINDOW FRAME-PAINT
- 16 ● WINDOWS CLEAN/PRIIME WOOD TRIM (SMB/SILL/HEAD HW/OCCURS)-PAINT
- 17 (E) KITCHEN EQUIPMENT TO REMAIN.
- 18 (E) STORAGE SHELVES TO REMAIN.
- 19 (E) PLUMBING FIXTURE TO REMAIN.
- 20 (E) FINISH AND GATES TO REMAIN.
- 21 (E) CABINETS TO REMAIN.
- 22 (E) WALL MOUNT TV/BROCKET TO REMAIN.
- 23 ● (E) EXISTING DOOR FRAME TO REMAIN. REMOVE DOOR. REMOVE WALL. SEE MECHANICAL DWGS. PATCH AND WATER-RESISTANT WALL FINISHES AS REQUIRED.
- 24 ● (E) EXISTING DOOR FRAME TO REMAIN. REMOVE DOOR. REMOVE WALL. SEE MECHANICAL DWGS.
- 25 TRAY ELEVATION IS TO BE 34" AFF. MAX.

Item No. 26: Refer to Sheet A-424
 Omit openings in wall for mechanical ducting in room E-118 Mechanical room. Revise Keynote #02 to include Keynote #01. Omit semi-ambulatory toilet stall detail A5. Delete Keynote #02. Delete Keynote #03 to read: "Existing cabinet to remain, remove and replace all doors, drawer fronts, & face plates. Finish per specifications." Delete Keynote #04. Delete Keynote #23. Delete Keynote #24.

LEGEND

- EXISTING 2x6 STUD WALL
- NEW 2x6 @ 16" o/c STUD WALL
- EXISTING WOOD FENCE
- NEW PLASTIC LAMINATE COUNTERTOP
- NEW RESILIENT SHEET FLOORING
- RESILIENT TILE FLOORING
- OF FIRE EXTINGUISHER @ 48" TO CENTER OF HANDLE
- DOOR SIGNALS SEE DETAIL XX/XXXX
- INTERIOR ELEVATION
- ROOM NUMBER
- EXTENSIVE ELEVATION SYMBOL
- ROOM NUMBER
- INTERIOR ELEVATION
- DOOR NUMBER
- DOOR NUMBER
- DOOR NUMBER
- WINDOW SYMBOL
- WINDOW NUMBER
- SECTION NUMBER
- WINDOW NUMBER
- SHEET NUMBER

ACCESSIBLE CLEARANCE LEGEND

- NOTE: ALL DIMENSIONS ARE CLEARANCE TO FINISH MATERIALS
- 5'-0" DIAMETER TURNING CIRCLE
- 30"-48" CLEAR AREA TYP. UN.O.

BUILDING KEY PLAN

MARK	DATE	DESCRIPTION
SD		
CD	08/23/07	ADDENDUM 1
AD	09/11/07	ADDENDUM 2
AD	11/01/07	ADDENDUM 3

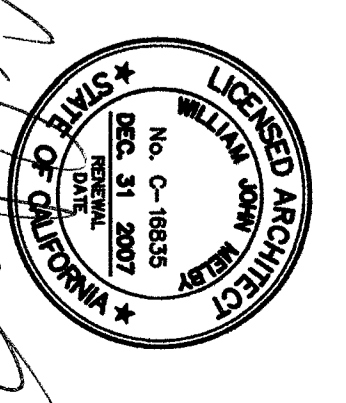
1116 LYRIC WAY
 BAKERSFIELD
 CALIFORNIA
 93309

BAKERSFIELD
 CITY SCHOOL
 DISTRICT

MODERNIZATION AT
 CURRAN MIDDLE
 SCHOOL
 FOR:

IDENTIFICATION STAMP
 DIVISION OF STATE ARCHITECT
 OFFICE OF REGULATION SERVICES
 APRIL 03-107003
 FILE # 16-5
 DATE

DANNY E. GORDON, AIA
 ARCHITECT C-14,728
 WILLIAM J. MELBY, AIA
 ARCHITECT C-16,835
 CONSULTANT



ORDIZ MELBY ARCHITECTS, INC.

5900 KING AVENUE
 BAKERSFIELD, CALIFORNIA 93309
 TELEPHONE (801) 822-2598
 FACSIMILE (801) 822-4291

SUITE 200
 93309
 (801) 822-2598
 (801) 822-4291