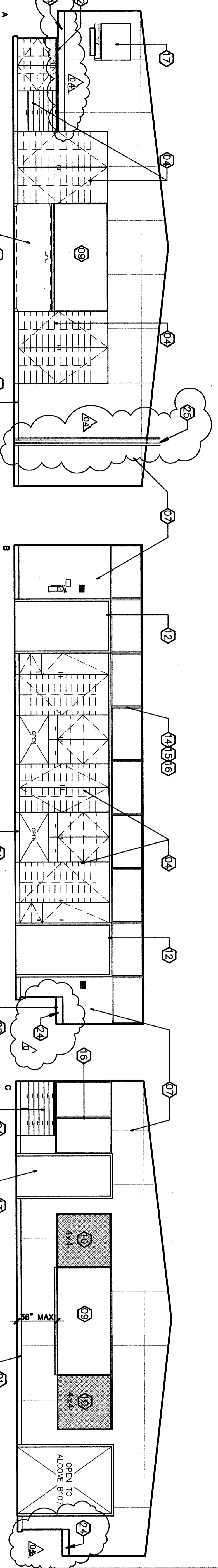
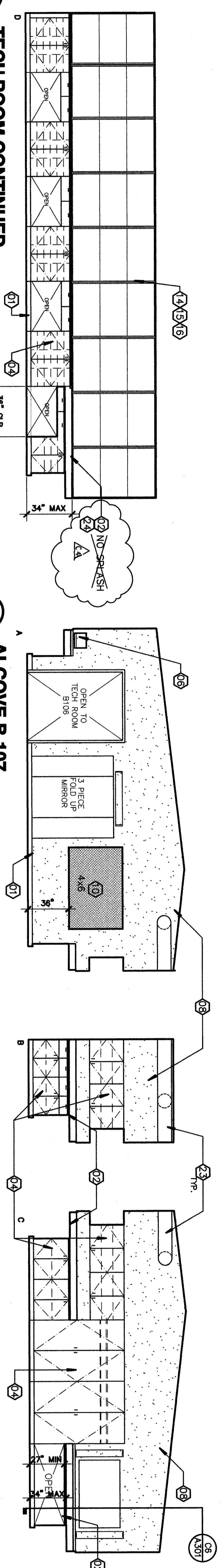


E1
 1/4"=1'-0"
BOOK ROOM B-105

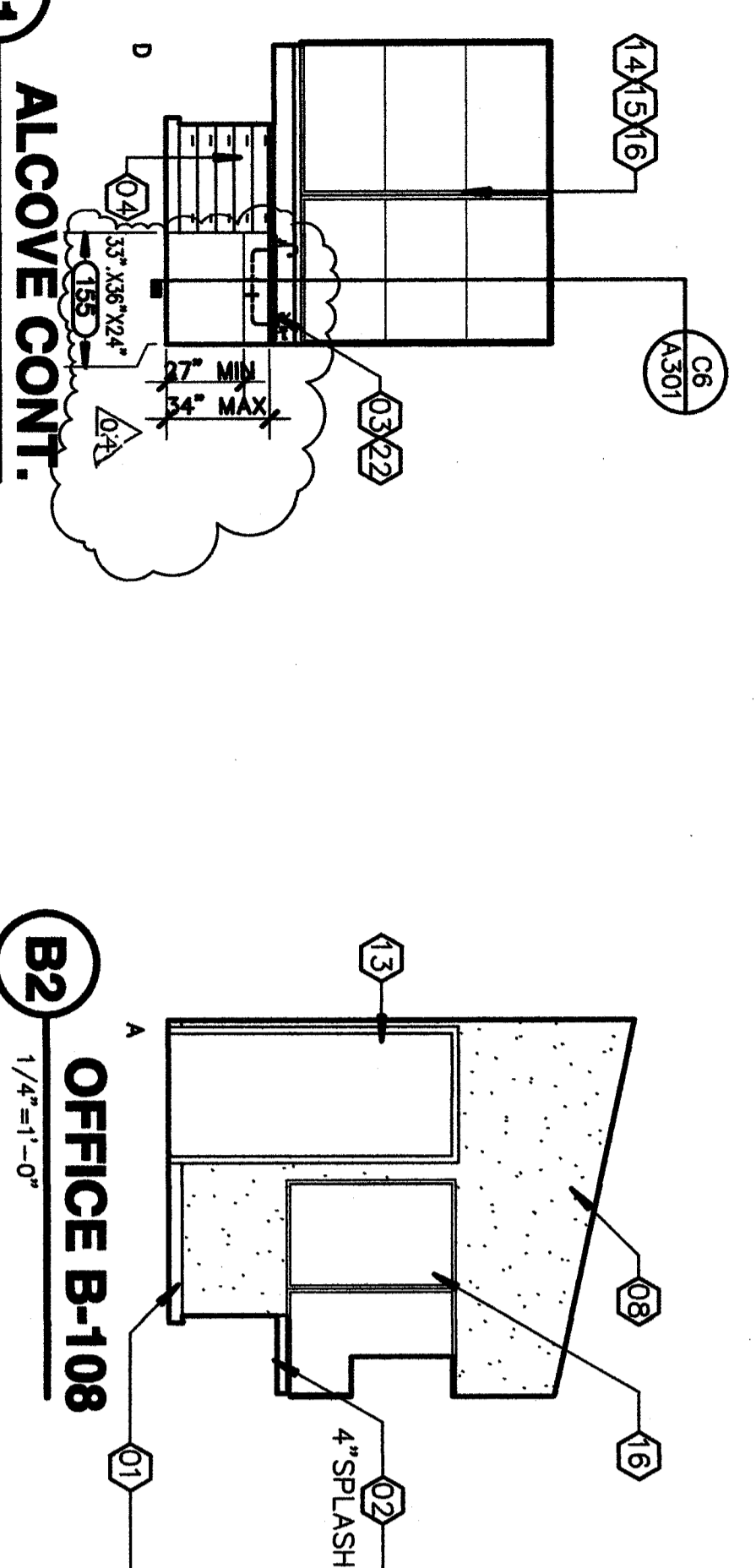


D1
 1/4"=1'-0"
TECH ROOM B-106

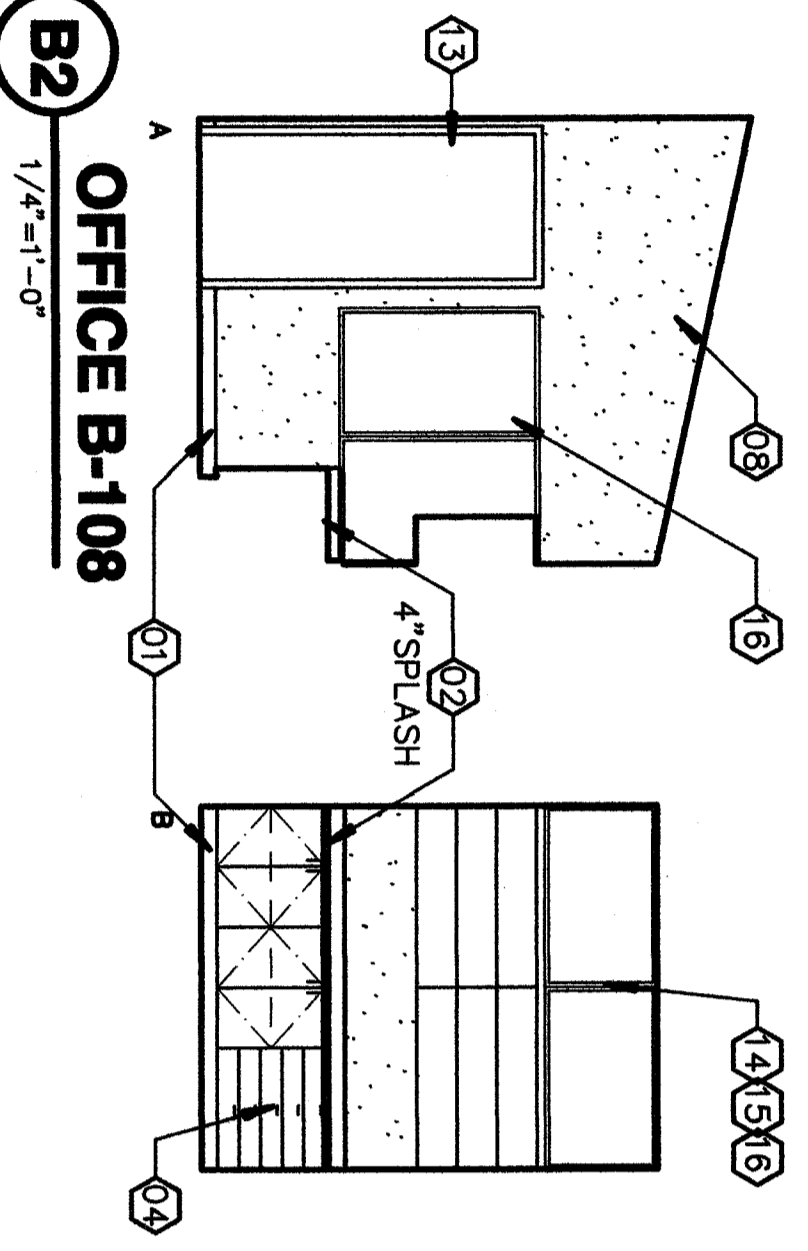


C1
 1/4"=1'-0"
TECH ROOM CONTINUED

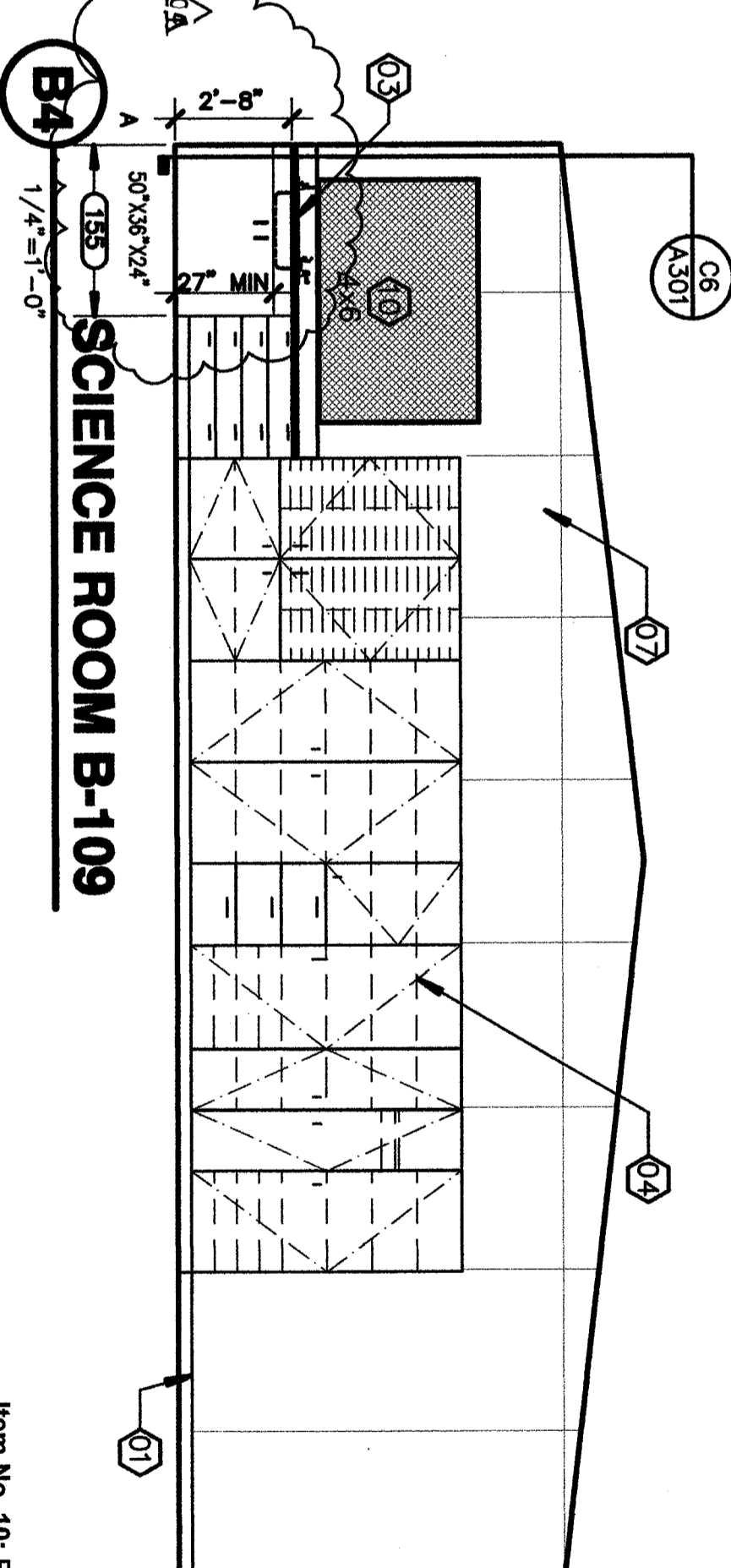
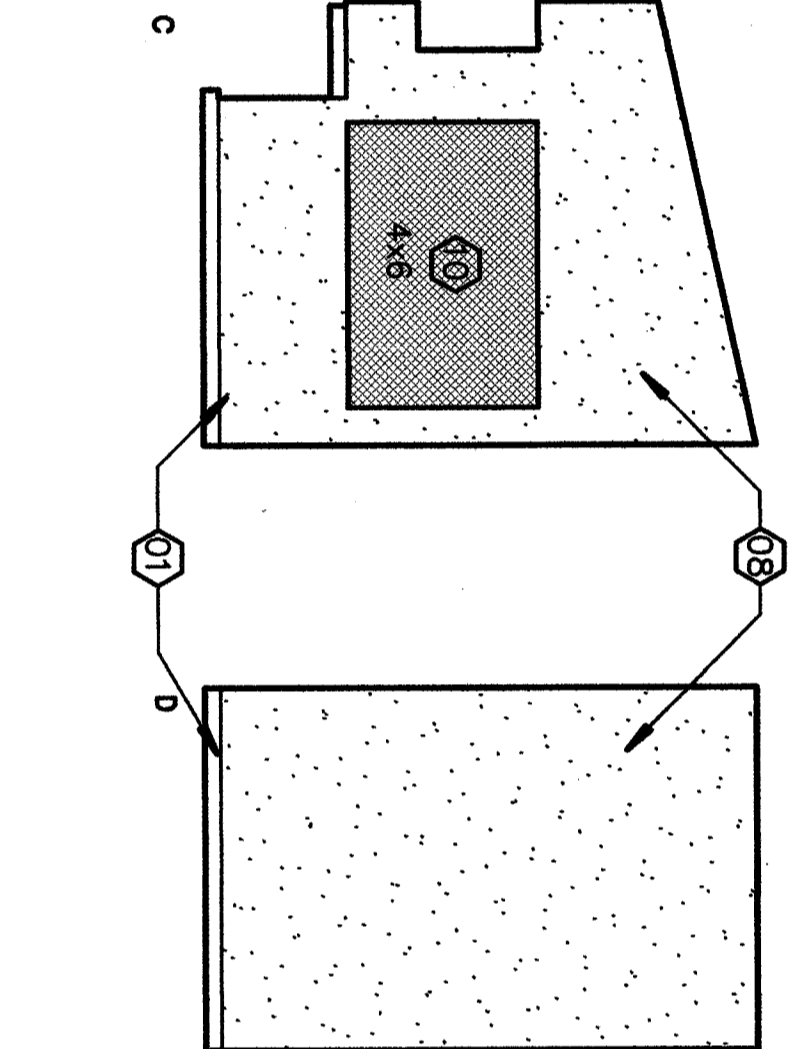
C3
 1/4"=1'-0"
ALCOVE B-107



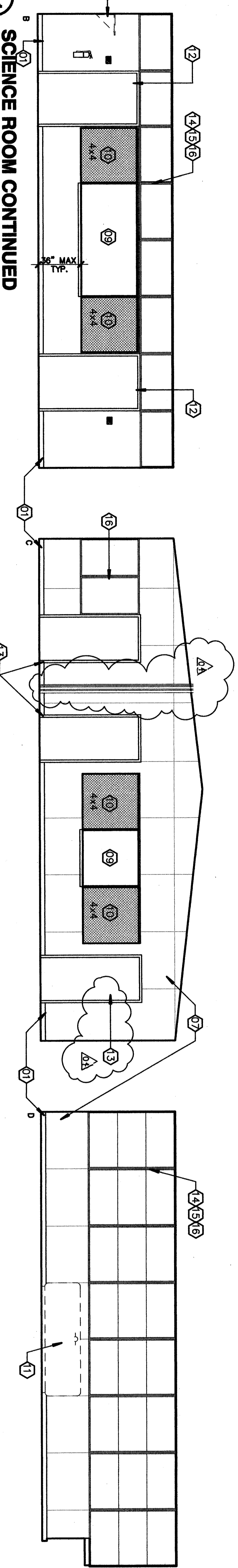
B1
 1/4"=1'-0"
ALCOVE CONT.



B2
 1/4"=1'-0"
OFFICE B-108



B4
 1/4"=1'-0"
SCIENCE ROOM B-109



A1
 1/4"=1'-0"
SCIENCE ROOM CONTINUED

KEYNOTES
 THIS SHEET ONLY

- 01 REMOVE (E) RUBBER BASE WHERE OCCURS-PROVIDE/INSTALL RISER.
- 02 REMOVE/REPLACE (E) COUNTERTOP W/CORNER COUNTER TOP W/6" SPLASH, (UND) CAULK AT WALL.
- 03 REPLACE EXISTING SINK CABINET WITH ADA COMPLIANT SINK CABINET TYPICAL ALL SINK CABINETS.
- 04 (E) CABINET TO REMAIN, REMOVE DOOR AND DRAWER PULLS, SAND ALL SURFACES, (DOORS, DRAWERS, SHELVES, ETC) TO REMOVE HARDWARE, FILL DAMAGED AREAS, PREP & PAINT-REINSTALL HARDWARE.
- 05 MAINTAIN (E) OPEN SPACE FOR METAL FILE CABINET.
- 06 PROVIDE/INSTALL PAPER TOWEL DISPENSER-SEE SPECIFICATIONS.
- 07 PATCH/FILL DAMAGED WALLS AS REQUIRED, PREP-PAINT
- 08 (E) PLYWOOD WALLS
- 09 PATCH/FILL DAMAGED WALLS AS REQUIRED, PREP-PAINT
- 10 REMOVE/REPLACE CHALK BOARDS W/LIQUID MARKER BOARDS SEE SPECIFICATIONS.
- 11 REMOVE/REPLACE (E) THERMOSTATS-SEE SPECIFICATIONS SEE DETAIL AG 531 FOR MOUNTING REQUIREMENTS
- 12 REMOVE ABANDON HEATER UNIT, CAP ALL SUPPLY/RETURN LINES MATCH 2X FRAMING, INSTALL INSULATION, PATCH-MATCH FINISHES-PAINT.
- 13 (E) DOOR/FRAME TO REMAIN, REPLACE HARDWARE W/ ACCESSIBLE HARDWARE, SEE DOOR SCHEDULE, SAND PREPARE DOOR SURFACE, PAINT EXTENSIONS, RE-STAIN PREVIOUSLY STAINED AREAS WHERE OCCURS.
- 14 (E) DOOR/FRAME TO REMAIN, SEE DOOR SCHEDULE, SAND PREPARE DOOR SURFACE, PAINT EXTENSIONS, RE-STAIN PREVIOUSLY STAINED AREAS WHERE OCCURS.
- 15 WINDOWS CLEAN/PRIIME TUBE STEEL MULLIONS-PAINT
- 16 WINDOWS CLEAN/PRIIME PAINTED METAL WINDOW FRAME-PAINT
- 17 (E) WALL MOUNTED TUBERACKET TO REMAIN
- 18 REMOVE (E) TROUGH SINK, PROVIDE/INSTALL CORN. SINK/W/6" SPLASH & ACCESSIBLE SINK, CONNECT TO (E) SINK/W/6" SPLASH & ACCESSIBLE SINK, BREAK OUT TILE AS PATCH-FILL MATCH FINISHES.
- 19 REMOVE (E) WOOD SHELF/ROD/HOOKS, PATCH WALL AS REQUIRED, PAINT PLYWOOD WALL.
- 20 PREP(E) WOOD COUNTERTOP & ANGLED SHELVES-PAINT.
- 21 MODIFY (N) COUNTERTOP & H.C. SINK CABINET TO PROVIDE 27" HIGH X 30" WIDTH CLEAR KNEE SPACE & 34" MAX. TOP OF COUNTER.
- 23 (E) EXPOSED HVAC DUCTING TO REMAIN-PREP/PAINT.
- 24 PROVIDE 6" BACKSPLASH
- 25 SURFACE MOUNTED CONDUIT SEE ELECTRICAL

Item No. 10: Refer to Sheet A-232. Remove existing wood cabinet in area with replacement. Elevations D1-D4 show wall mounted electrical and data conduits in Tech Room B-106 see electrical for further requirements. Elevations C1-C4 delete the accessible cabinets at sink locations. Interior Elevation "AT" Elevations "C" Elevations "A1, Elevation "C", show wall mounted conduits vertical from Keynote #02 to read. "Remove and replace existing counter top with certain countertop with 6" splash (unless noted otherwise) sink to wall typical. "Replace Keynote 03 to read. "Replace existing sink cabinet with ADA compliant sink cabinet, "typical all sink cabinets." Revise Keynote #4 front, & face plates. Finish per specifications and replace Keynote #13 to read. "Remove existing tough sink, provide install counter with 6" splash & accessible sink per plumbing plans. See addendum drawing #24 "Provide 6" backsplash." Add Keynote #25 "Surface mounted conduit see electrical."

ORDIZ MELBY ARCHITECTS, INC.
 5000 WING AVENUE SUITE 200
 BAKERSFIELD, CALIFORNIA 93309
 TELEPHONE (818) 832-6298
 FACSIMILE (818) 832-4291

DANNY E. GORDIC, AIA
 ARCHITECT C-14,728
 WILLIAM L. MERTZ, AIA
 ARCHITECT C-18,835
 CONSULTANT

IDENTIFICATION STAMP
 DIVISION OF STATE ARCHITECT
 OFFICE OF REGULATION SERVICES
 APRIL 03-107003
 FILE # 15-9
 DATE _____ FILE # _____ SS _____

MODERNIZATION AT
 CURRAN MIDDLE
 SCHOOL
 FOR:
BAKERSFIELD CITY SCHOOL DISTRICT
 1116 LYRIC WAY
 BAKERSFIELD CALIFORNIA
 93309

BUILDING KEY PLAN

MARK	DATE	DESCRIPTION
CD	09/29/07	ADDENDUM 1
AD	08/11/07	ADDENDUM 2
AD	11/01/07	ADDENDUM 3

JOB NUMBER: 2002040
 DATE: 12/28 PM
 DRAWN BY: TT
 CHECKED BY: TT
 ONCE AND ONLY FOR ALL DIMENSIONS PERFORMED BY THE ARCHITECT. THE DIMENSIONS, IDEAS, AND SPECIFICATIONS ARE THE PROPERTY OF THE ARCHITECT. NO PART OF THIS DOCUMENT IS TO BE REPRODUCED OR TRANSMITTED IN ANY FORM OR BY ANY MEANS, ELECTRONIC OR MECHANICAL, WITHOUT THE WRITTEN PERMISSION OF THE ARCHITECT.