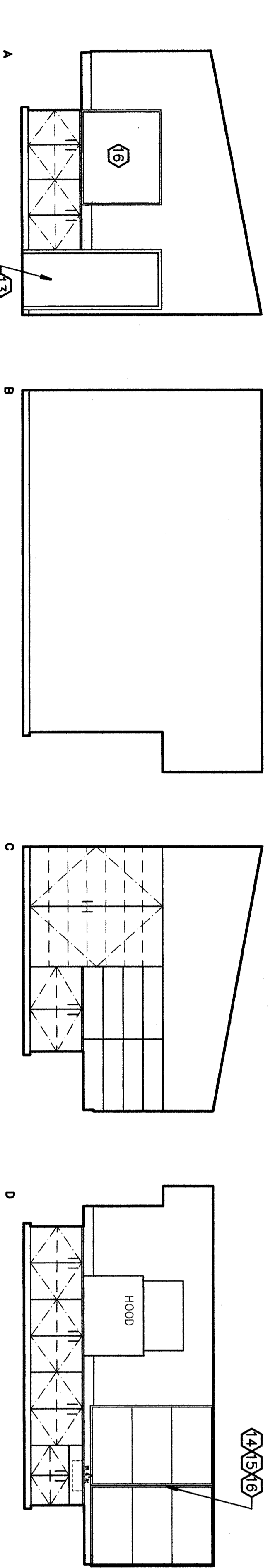
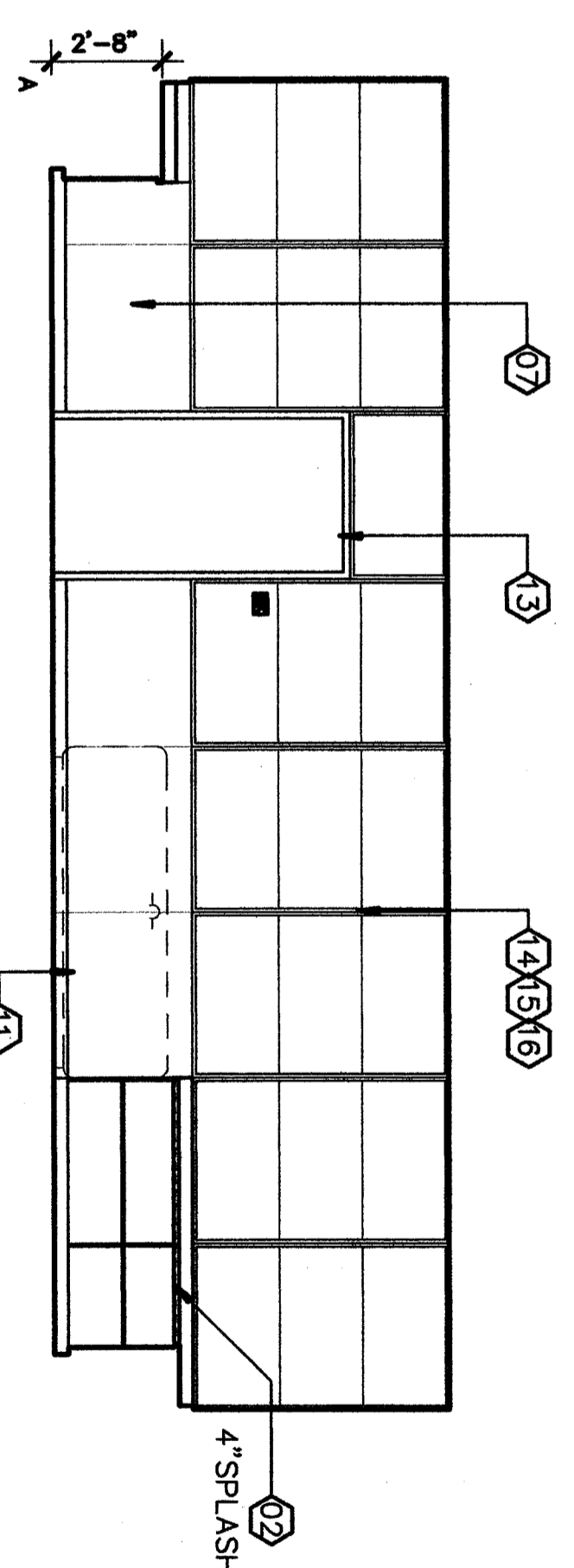


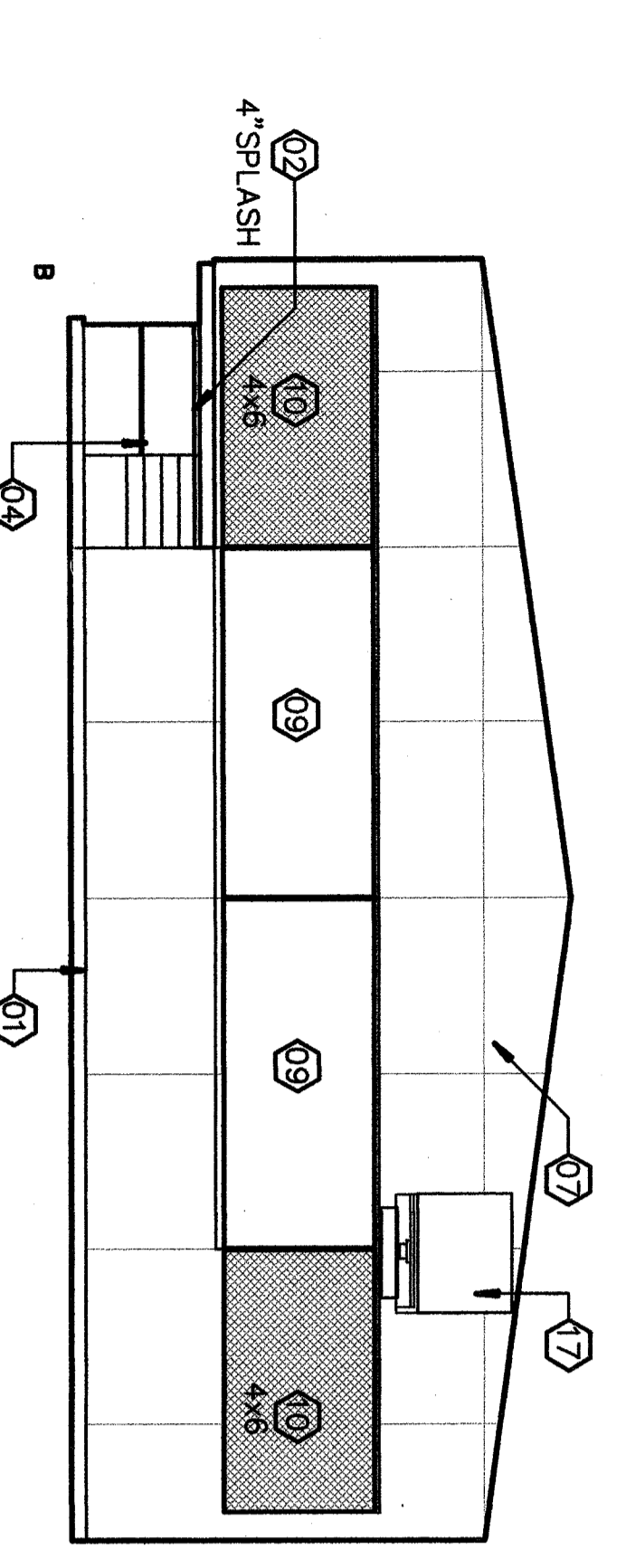
E1
 1/4"=1'-0"
WOOD SHOP CONTINUED



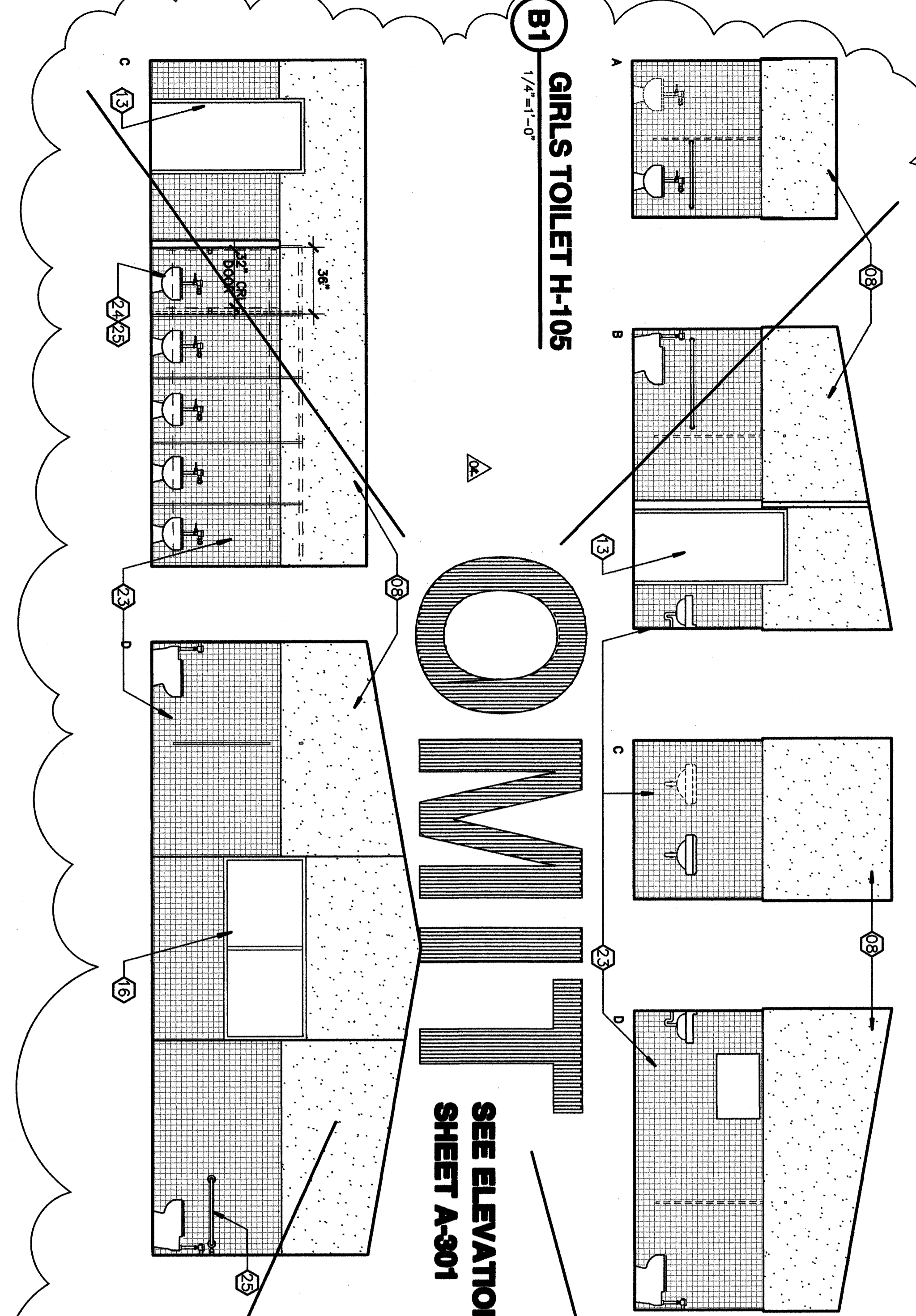
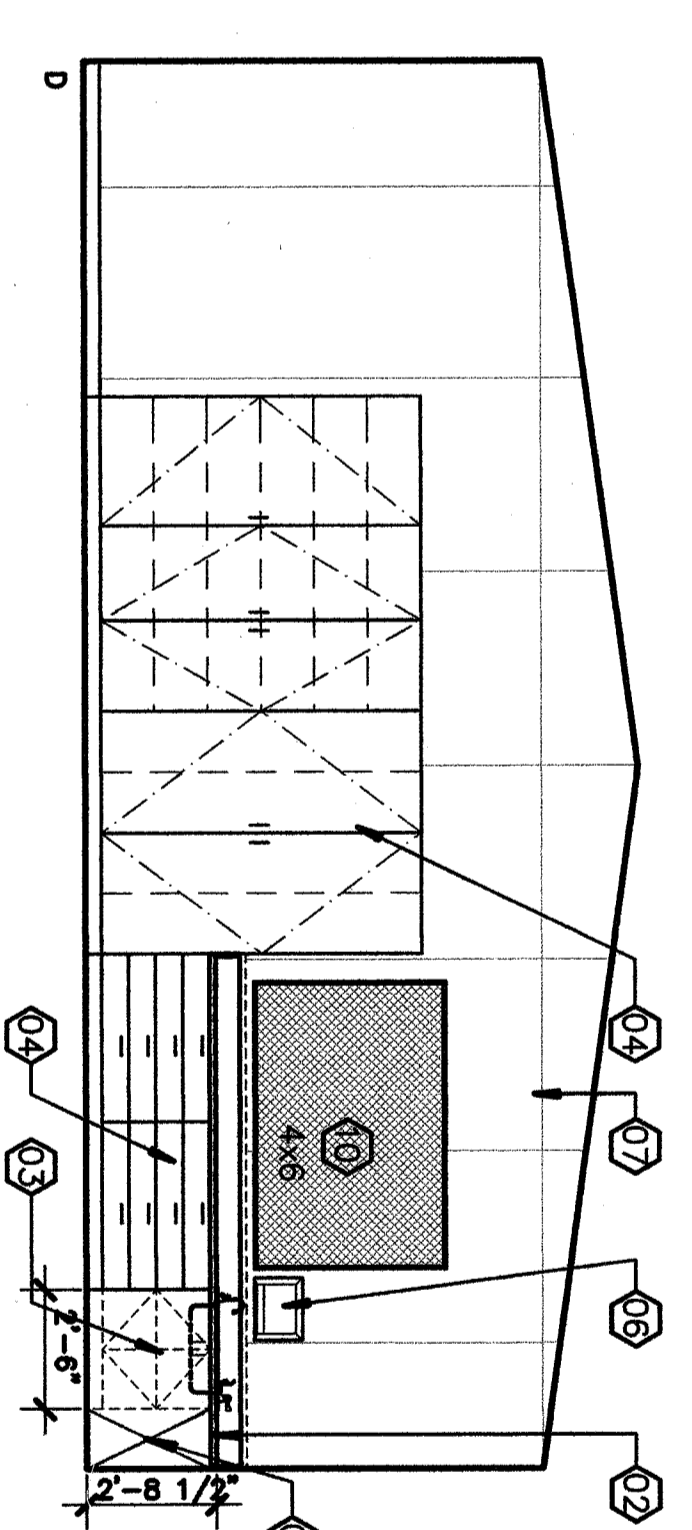
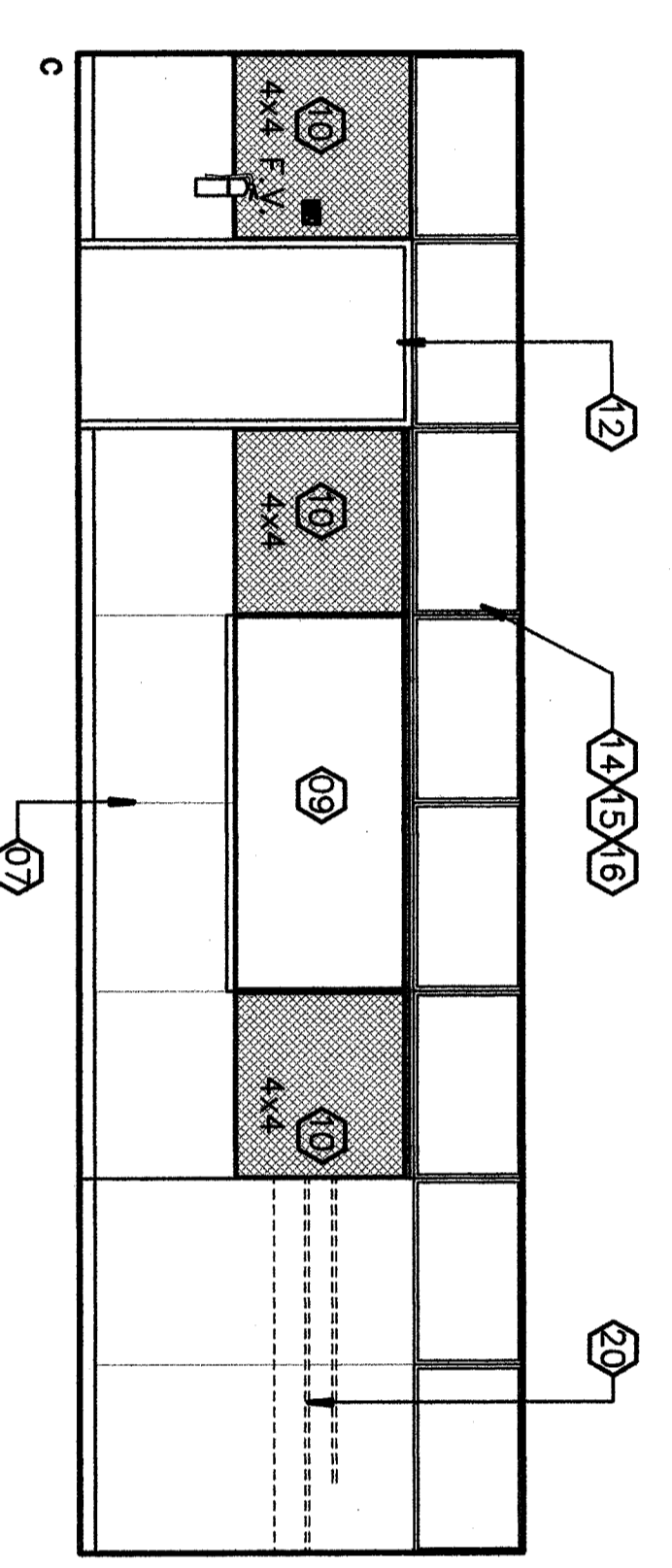
D1
 1/4"=1'-0"
PAINT ROOM G-114



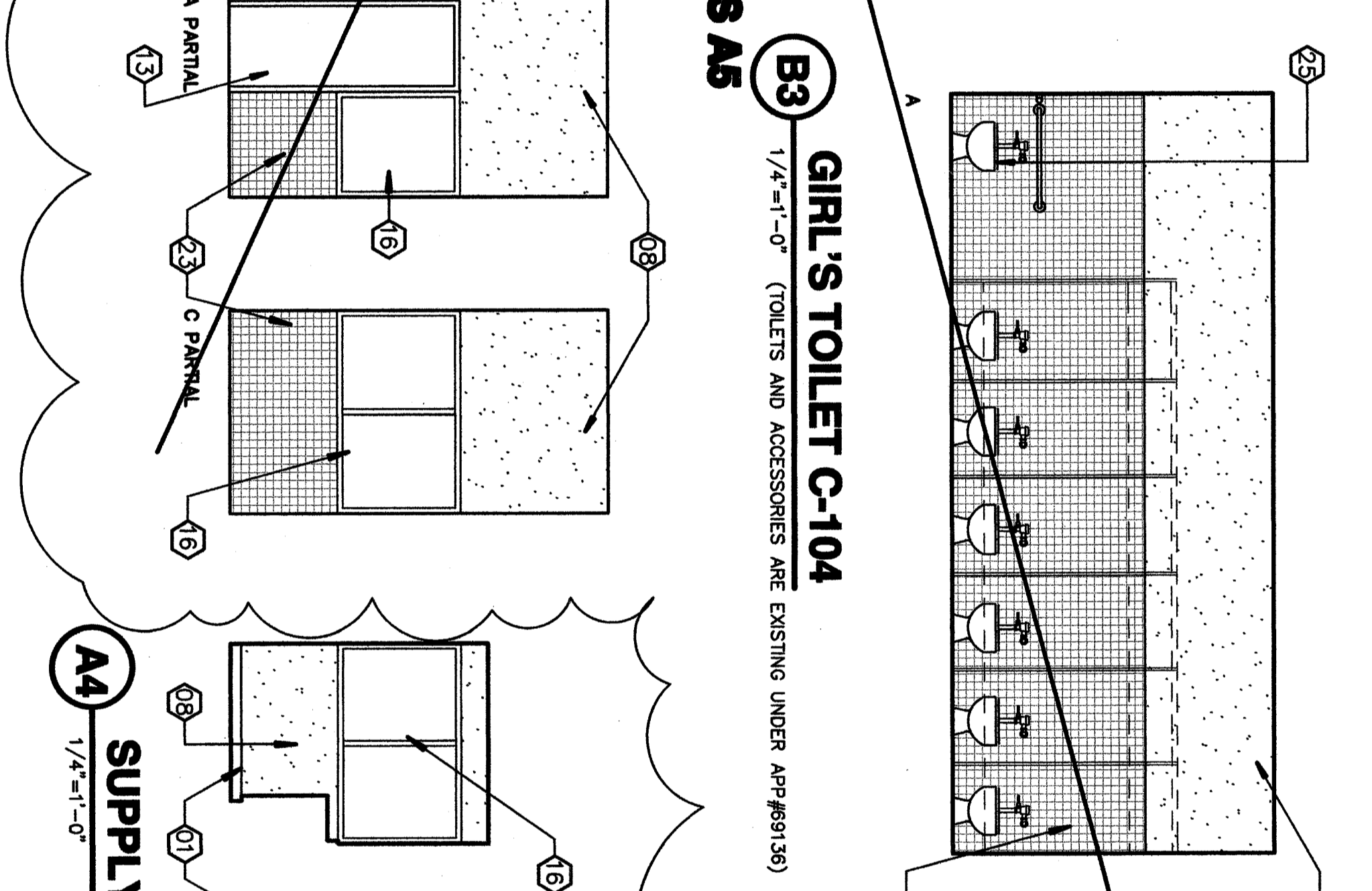
D4
 1/4"=1'-0"
TYPICAL CLASS ROOM H-101, 102, 103, & 104



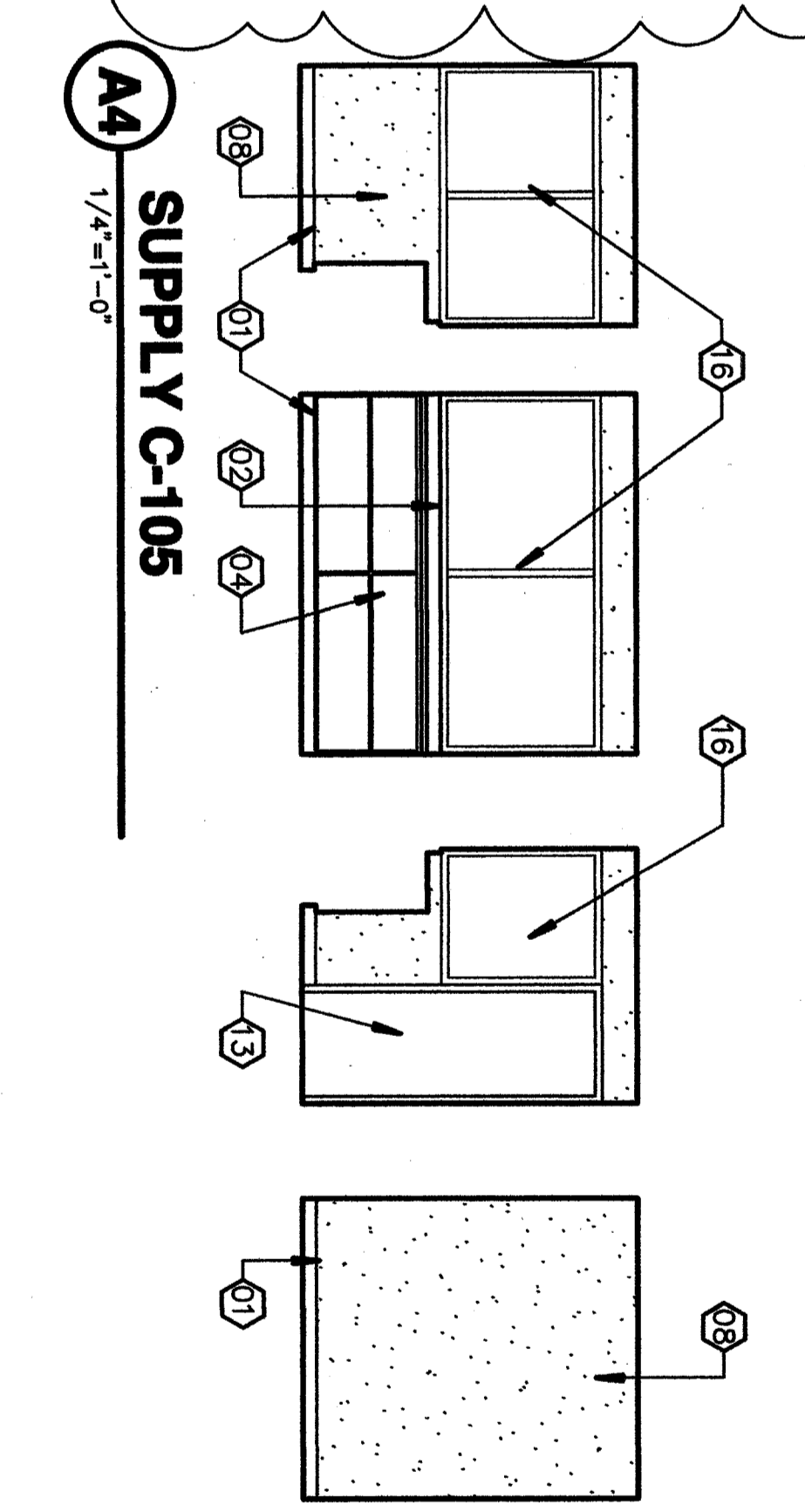
C1
 1/4"=1'-0"
TYPICAL CLASS ROOM CONTINUED



B1
 1/4"=1'-0"
GIRLS TOILET H-105



B3
 1/4"=1'-0"
GIRL'S TOILET C-104
 (TOILETS AND ACCESSORIES ARE EXISTING UNDER APF#9130)



A4
 1/4"=1'-0"
SUPPLY C-105

COMMITMENT

SEE ELEVATIONS AS SHEET A-301

KEYNOTES
 THIS SHEET ONLY

- 01 REMOVE (E) RUBBER BASE WHERE OCCURS-PROVIDE/INSTALL RTSB.
- 02 REMOVE/REPLACE (E) COUNTERTOP W/CORON COUNTERTOP TOP W/6" SPLASH, (UNO) ONLY AT WALL.
- 03 REPLACE EXISTING SINK CABINET WITH ADA COMPLIANT SINK CABINET.
- 04 (E) CABINET TO REMAIN, REMOVE DOOR AND DRAWER PULLS, SAND BAKERSFIELD, (DOORS, DRAWERS, SHELVES, ETC.) TO REMOVE BUILD-UP PAINT, FILL DAMAGED AREAS, PRIME & PAINT-REINSTALL PARTS/DOORS.
- 05 MAINTAIN (E) OPEN SPACE FOR METAL FILE CABINET.
- 06 PROVIDE/INSTALL PAPER TOWEL DISPENSER-SEE SPECIFICATIONS.
- 07 PATCH/FILL DAMAGED WALLS AS REQUIRED, PRIME-PAINT (E) PLUMWOOD WALLS.
- 08 PATCH/FILL DAMAGED WALLS AS REQUIRED, PRIME-PAINT (E) PLASTER FINISH WALLS.
- 09 REMOVE/REPLACE CHALK BOARDS W/LIQUID MARKER BOARDS SEE SPECIFICATIONS.
- 10 REMOVE/REPLACE (E) TACKBOARDS-SEE SPECIFICATIONS SEE DETAIL A4/A-231 FOR WORKING REQUIREMENTS.
- 11 REMOVE/REMOVE W/TER UNIT CAP. ALL SUPPLY RETURN LINES BEHIND WALL, REMOVE VENT OPENING & EXTERIOR WALL/CEILING MATCH 2X FRAMING, INSTALL INSULATION, PATCH-MATCH FINISHES-PAINT.
- 12 (E) DOOR/FRAME TO REMAIN, REPLACE HARDWARE W/ ACCESSIBLE HARDWARE. SEE DOOR SCHEDULE, SAND PREPARE DOOR SURFACE, PAINT EXTENSIONS, RE-STAIN FINISHES, STAINED AREAS OCCUR WHERE OCCURS.
- 13 (E) DOOR/FRAME TO REMAIN, SEE DOOR SCHEDULE, SAND PREPARE WHERE OCCURS.
- 14 (E) WINDOWS CLEAN/PRIME TUBE STEEL WILLOWS-PAINT.
- 15 (E) WINDOWS CLEAN/PRIME PAINTED METAL WINDOW FRAME-PAINT.
- 16 (E) WINDOWS CLEAN/PRIME WOOD TRIM (LAMB/SIL/HEAD W/ACCENTS)-PAINT.
- 17 (E) WALL MOUNTED TV/RACK/ETC TO REMAIN.
- 18 REMOVE (E) TROUGH SINK, PROVIDE/INSTALL CORN COUNTER W/6" SPLASH & ACCESSIBLE SINK-CONNECT TO (E) SINK. REMOVE/REMOVE W/TER UNIT CAP. ALL SUPPLY RETURN LINES BEHIND WALL, REMOVE VENT OPENING & EXTERIOR WALL/CEILING MATCH 2X FRAMING, INSTALL INSULATION, PATCH-MATCH FINISHES-PAINT.
- 19 REMOVE/REMOVE W/TER UNIT CAP. ALL SUPPLY RETURN LINES BEHIND WALL, REMOVE VENT OPENING & EXTERIOR WALL/CEILING MATCH 2X FRAMING, INSTALL INSULATION, PATCH-MATCH FINISHES-PAINT.
- 20 REMOVE (E) WOOD SHEET/COAT ROD/HOOKS, PATCH WALL AS REQUIRED, PAINT PLUMWOOD WALL.
- 21 PREPARE WOOD COUNTERTOP & ANGLED SHELVES-PAINT.
- 22 MODIFY (N) COUNTERTOP & H.C. SINK CABINET TO PROVIDE 27" CLEAR KNEE SPACE.
- 23 (E) C.T. TO REMAIN.
- 24 REMOVE/REPLACE TOLLET PARTITION AS REQUIRED TO PROVIDE 36" CLR. SPACE FOR SEMI-AMBULATORY TOILET SPACE. SEE DET. B3/A501 (SEE PLUMBING DIMS).
- 25 REMOVE/REPLACE PLUMBING FIXTURES PROVIDE ACCESSIBLE WC- (SEE PLUMBING DIMS).
- 26 DEMO EXISTING LUMBER RACK, REPAIR ALL SURFACES TO MATCH.
- 27 DEMO EXISTING CABINETS REPAIR FLOOR AND WALL SURFACES AS REQUIRED TO MATCH EXISTING TRP.
- 28 DEMO EXISTING TOOL CADDIES AND LOCKERS, REPAIR ALL FLOOR AND WALL SURFACES TO MATCH EXISTING TRP.

ORDIZ MELBY ARCHITECTS, INC.
 5600 WING AVENUE SUITE 200
 BAKERSFIELD, CALIFORNIA 93309
 TELEPHONE (805) 832-6299
 FACSIMILE (805) 832-6291

DANNY E. ORTIZ, AIA
 ARCHITECT C-A-728
 WILLIAM J. HESTER, AIA
 ARCHITECT C-16-835
 CONSULTANT

IDENTIFICATION STAMP
 DIVISION OF STATE ARCHITECT
 OFFICE OF REGULATION SERVICES
 FILE # 10-6
 APRIL 08-107003
 AC: FLS: SS: DATE: _____

1116 LYNNRIC WAY
 BAKERSFIELD
 CALIFORNIA
 93309

MODERNIZATION AT
 CURRAN MIDDLE
 SCHOOL
 FOR:
**BAKERSFIELD
 CITY SCHOOL
 DISTRICT**

BUILDING KEY PLAN

MARK	DATE	DESCRIPTION
SD		
CD	08/23/07	ADDENDUM 1
AD	09/11/07	ADDENDUM 2
AD	11/01/07	ADDENDUM 3

JOB NUMBER: 20072490
 DATE: 11/29/07
 DRAWN BY: TT
 CHECKED BY: TT

ARCHITECT: DANNY E. ORTIZ, AIA
 ARCHITECT: WILLIAM J. HESTER, AIA
 ARCHITECT: DANIEL J. HESTER, AIA
 ARCHITECT: DANIEL J. HESTER, AIA
 ARCHITECT: DANIEL J. HESTER, AIA

INTERIOR BUILDINGS G & H
 SHEET IDENTIFICATION NUMBER
A-2312
 SHEET 31 OF 48