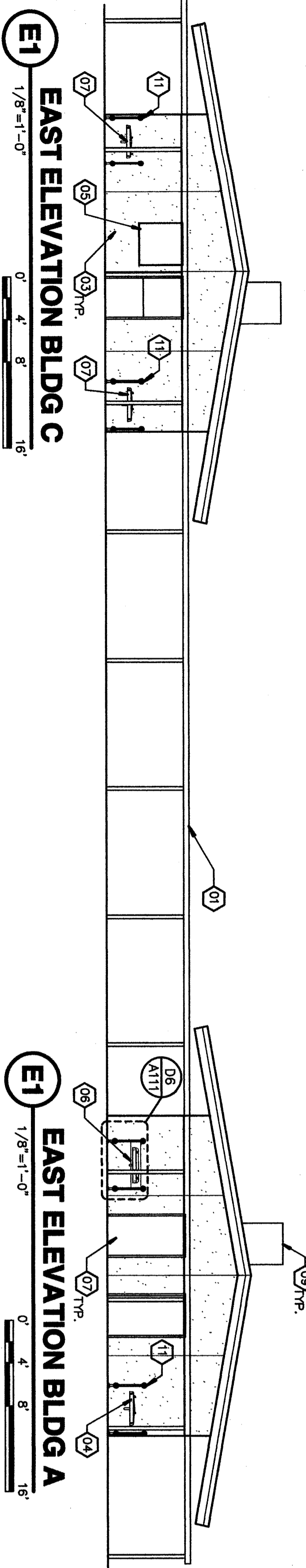
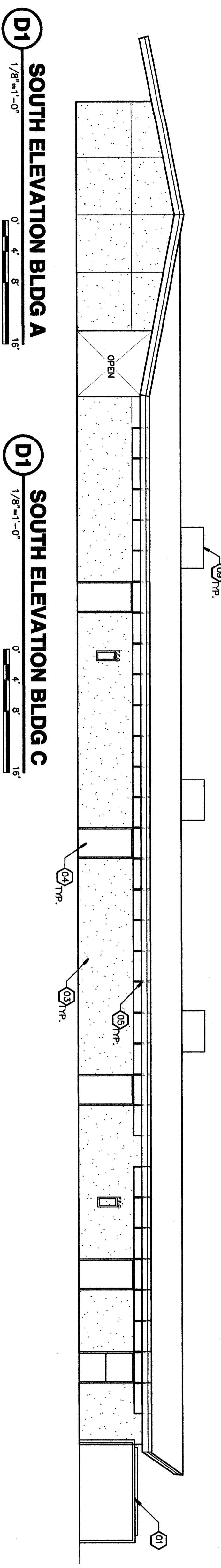


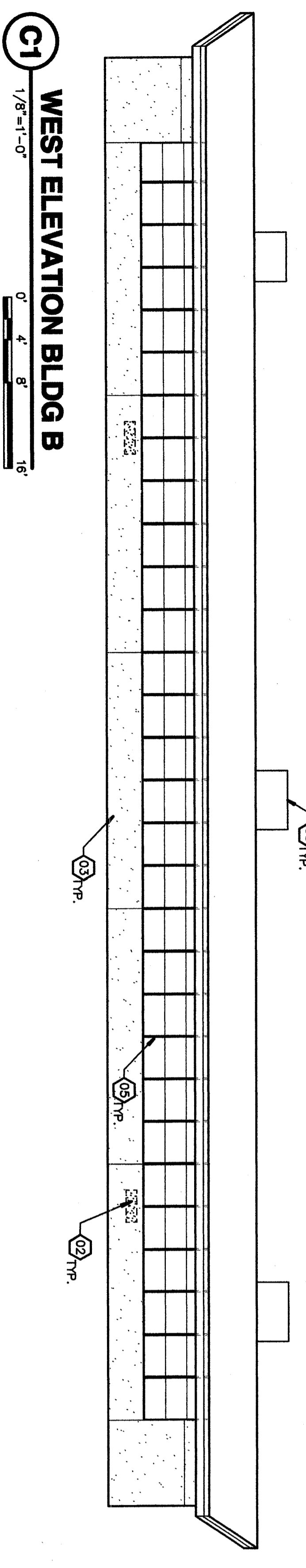
F1
 1/8"=1'-0"
 NORTH ELEVATION BLDG A



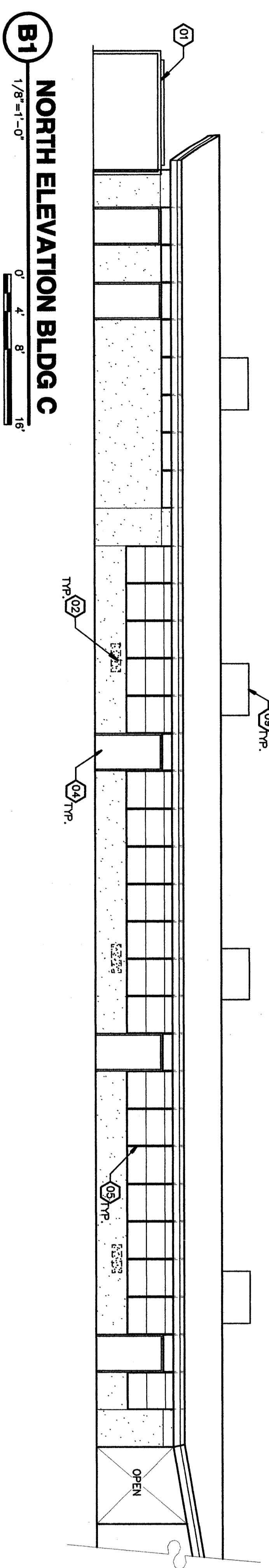
E1
 1/8"=1'-0"
 EAST ELEVATION BLDG C



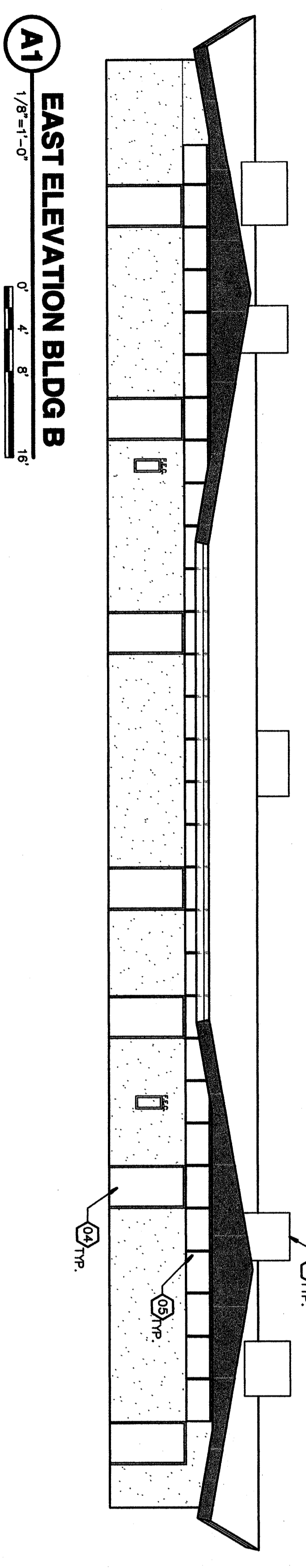
D1
 1/8"=1'-0"
 SOUTH ELEVATION BLDG A



C1
 1/8"=1'-0"
 WEST ELEVATION BLDG B



B1
 1/8"=1'-0"
 NORTH ELEVATION BLDG C



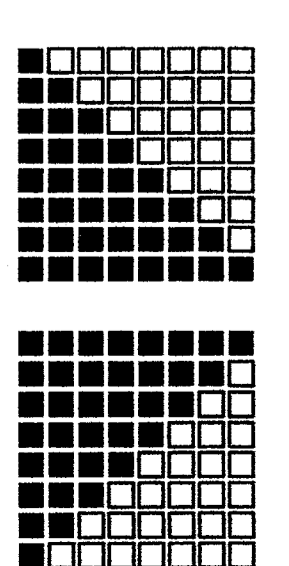
A1
 1/8"=1'-0"
 EAST ELEVATION BLDG B

KEYNOTES
 THIS SHEET ONLY

- 01 COVERED WALK TO BE REMOVED BY OTHERS
- 02 REMOVE WINDOW FRAMES & DOOR FRAME FINISHES. INCL. - MATCH 2x AND SCOTTS
- 03 PATCH/ PREP PLASTER SURFACES AS REQUIRED - PAINT WALLS
- 04 PATCH/ PREP DOORS/ FRAMES AS REQUIRED PAINT REFER TO FLOOR PLAN AND DOOR SCHEDULE FOR FINISH REQUIREMENTS.
- 05 CLEAN/ PRIME METAL WINDOW FRAMES PAINT.
- 06 REMOVE (E) D.F. PROVIDE/ INSTALL ACCESSIBLE D.F. PROVIDE WINGS SEE FLOORING PLAN
- 07 (E) DRINKING FOUNTAIN TO REMAIN.
- 08 (E) STORE FRONT TO REMAIN
- 09 REMOVE (E) A.C. UNITS AND PLATINGS. PROVIDE/INSTALL A.C. UNITS WITH FACTORY CURBS SEE MECHANICAL PLANS. PATCH (E) ROOFING AS REQUIRED. SEE STRUCTURAL DRAWINGS FOR ADDITIONAL ROOF FRAMING AND REWORKING BLOCKING
- 10 REMOVE FLOOR FRAMES, INCH OPENING WITH SQUARE DETAIL 8 SHEET
- 11 SEE DETAIL 06/A-111 FOR RAILING REQUIREMENTS

Item No. 5: Refer to Sheet A-221
 Remove Keynote 01 to read. Existing covered walk to be removed by others.

Item No. 6: Refer to Sheet A-221, A-222, A-223, and A-224
 Exterior Elevations buildings all; add reference to paint existing fascia per Keynote 01



ORDIZ MELBY ARCHITECTS, INC.
 6900 KING AVENUE SUITE 280
 BAKERSFIELD, CALIFORNIA 93309
 TELEPHONE (801) 832-8288
 FACSIMILE (801) 832-4281

DANNY E. ORDEZ, AIA
 ARCHITECT C-16835
 WILLIAM H. BERRY, AIA
 ARCHITECT C-16835
 CONSULTANT

IDENTIFICATION STAMP
 DIVISION OF STATE ARCHITECT
 OFFICE OF REGULATION SERVICES
 FILE # 15-6
 AC: _____ FS: _____ SS: _____
 DATE: _____

MODERNIZATION AT
 CURRAN MIDDLE
 SCHOOL
 FOR:
**BAKERSFIELD
 CITY SCHOOL
 DISTRICT**
 1116 LYNNRIC WAY
 BAKERSFIELD
 CALIFORNIA
 93309

BUILDING KEY PLAN

MARK	DATE	DESCRIPTION
SD		
CD	08/29/07	APPENDIX 1
AD	09/11/07	APPENDIX 2
AS	11/01/07	APPENDIX 3

JOB NUMBER: 2002/480
 DATE: 11/2/07
 DRAWN BY: TT
 CHECKED BY: TT
 COMMENT: CHECK AND VERIFY ALL DIMENSIONS BEFORE REPORT PROFESSIONAL WITH THIS DRAWING. THE DIMENSIONS, TOTAL AND PARTIAL, REPRESENT THE MEASURED CONDITIONS OF THE EXISTING BUILDING. ORDEZ MELBY ARCHITECTS, INC. 2007