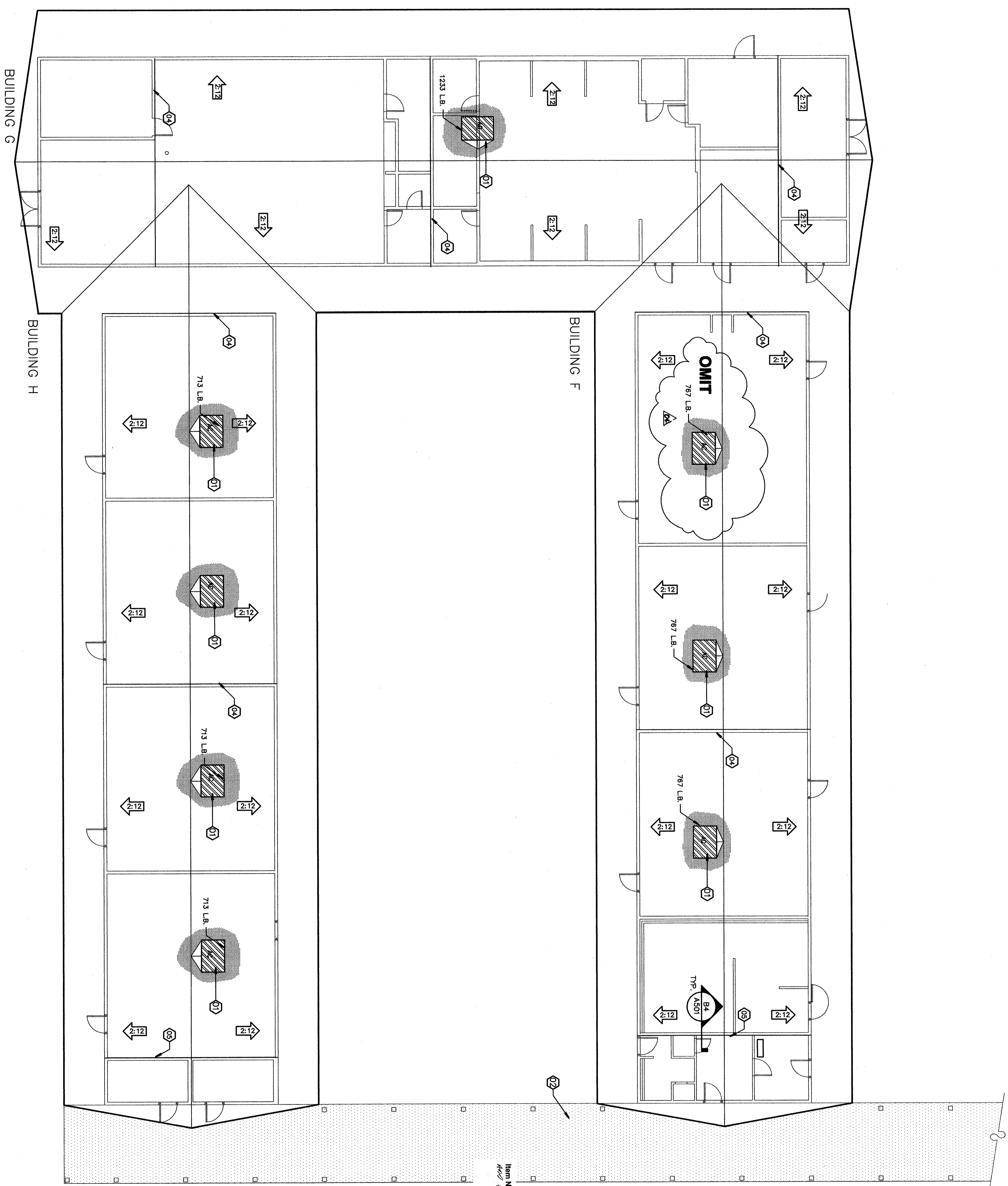
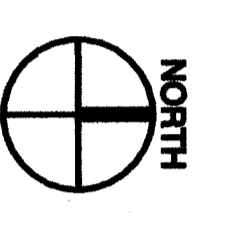


A1 PAROOF PLAN BUILDING 'F', 'G' & 'H'

1/8" = 1'-0"



- KEYNOTES**
 THIS SHEET ONLY
- 01 REMOVE (E) A.C. UNITS AND PLATFORMS. PROVIDE/INSTALL A.C. UNITS WITH FACTORY CURBS SEE MECHANICAL PLANS. FACTOR (E) ROOMING AS SHOWN IN MECHANICAL PLANS. PROVIDE/INSTALL 1/2" GYP BOARD AND REQUIRED BLOCKING.
 - 02 (E) COVERED WALK TO BE REMOVED BY OTHERS.
 - 03 (E) EVAPORATIVE COOLER TO REMAIN.
 - 04 (E) 3/8 PLYWOOD. DRAFT STOP.
 - 05 PROVIDE INSTALL 1/2" GYP. BOARD. DRAFT STOP. SEE DETAIL BA/A501

Item No. 3 Refer to Sheet A-143
 400 #4
 Omit HVAC unit over Math Room F-101. Revise Keynote 02 to read, "Existing covered walk to be removed by others." Revise Keynote 05 to read, "Provide and install 1/2 gypsum board draft stop, see detail BA/A-501."

ROOF LEGEND

- DIRECTION OF SLOPE
- PLUMBING THROUGH ROOF SEE PLUMBING DRAWINGS
- AIR SUPPLY DUCT SEE MECHANICAL
- RETURN AIR DUCT SEE MECHANICAL
- PATCH ROOFING, MATCH EXISTING
- ROOFTOP PACKAGED HVAC UNIT SEE MECHANICAL & ELECTRICAL DRAWINGS
- EXISTING COVERED WALK TO REMAIN

BUILDING KEY PLAN

MARK	DATE	DESCRIPTION
SD		
CD		
△	08/29/07	ADDENDUM 1
△	08/11/07	ADDENDUM 2
△	11/01/07	ADDENDUM 3

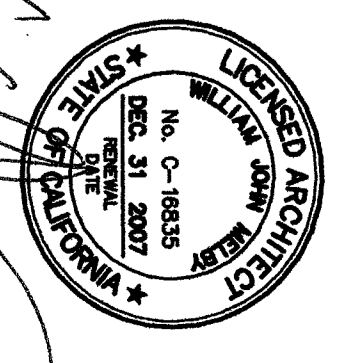
1116 LYNNRIC WAY
 BAKERSFIELD
 CALIFORNIA
 93309

**BAKERSFIELD
 CITY SCHOOL
 DISTRICT**

MODERNIZATION AT
 CURRAN MIDDLE
 SCHOOL
 FOR:

IDENTIFICATION STAMP
 OFFICE OF REGULATION SERVICES
 FILE # 15-4
 APRIL 03-107003
 AC FS SS
 DATE

DANNY E. ROY, AIA
 ARCHITECT C-14,173
 WILLIAM J. WEARY, AIA
 ARCHITECT C-16,655
 CONSULTANTS



800 HIND AVENUE SUITE 200
 BAKERSFIELD, CALIFORNIA 93309
 TELEPHONE (801) 952-0289
 FACSIMILE (801) 952-4291

**ORDIZ
 MELBY
 ARCHITECTS, INC.**