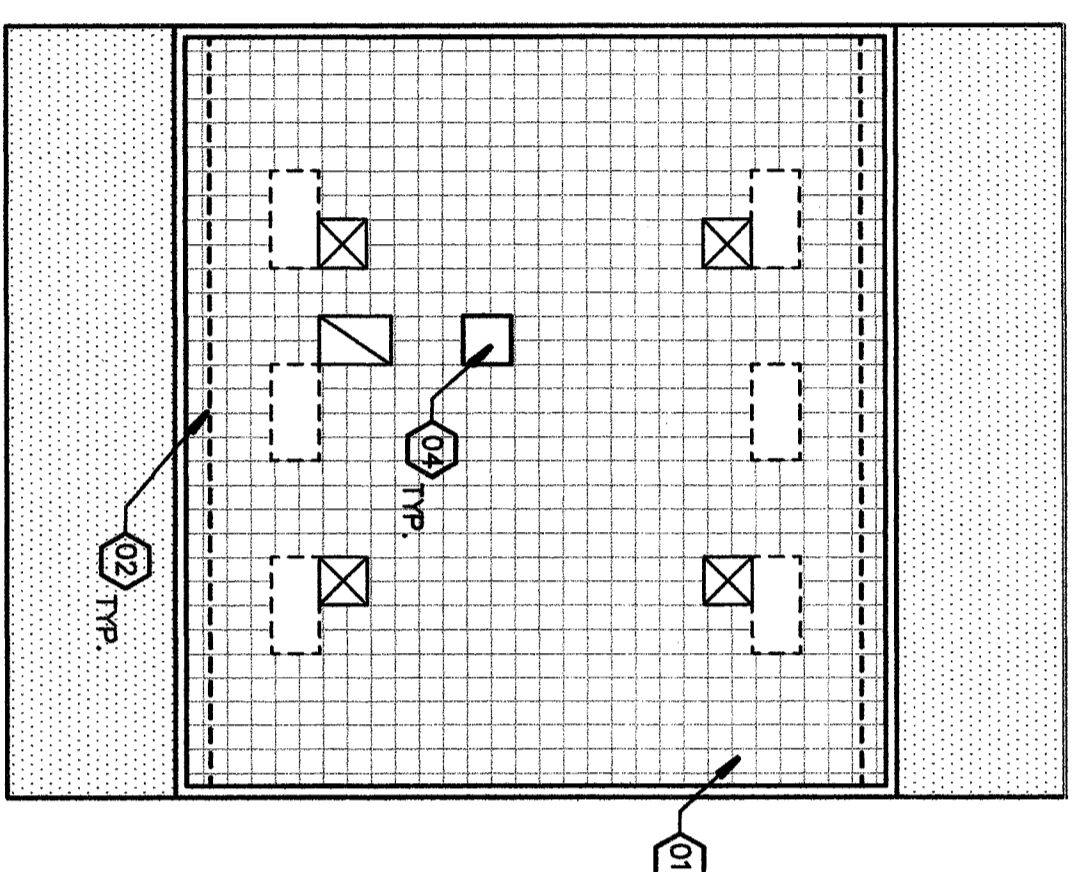
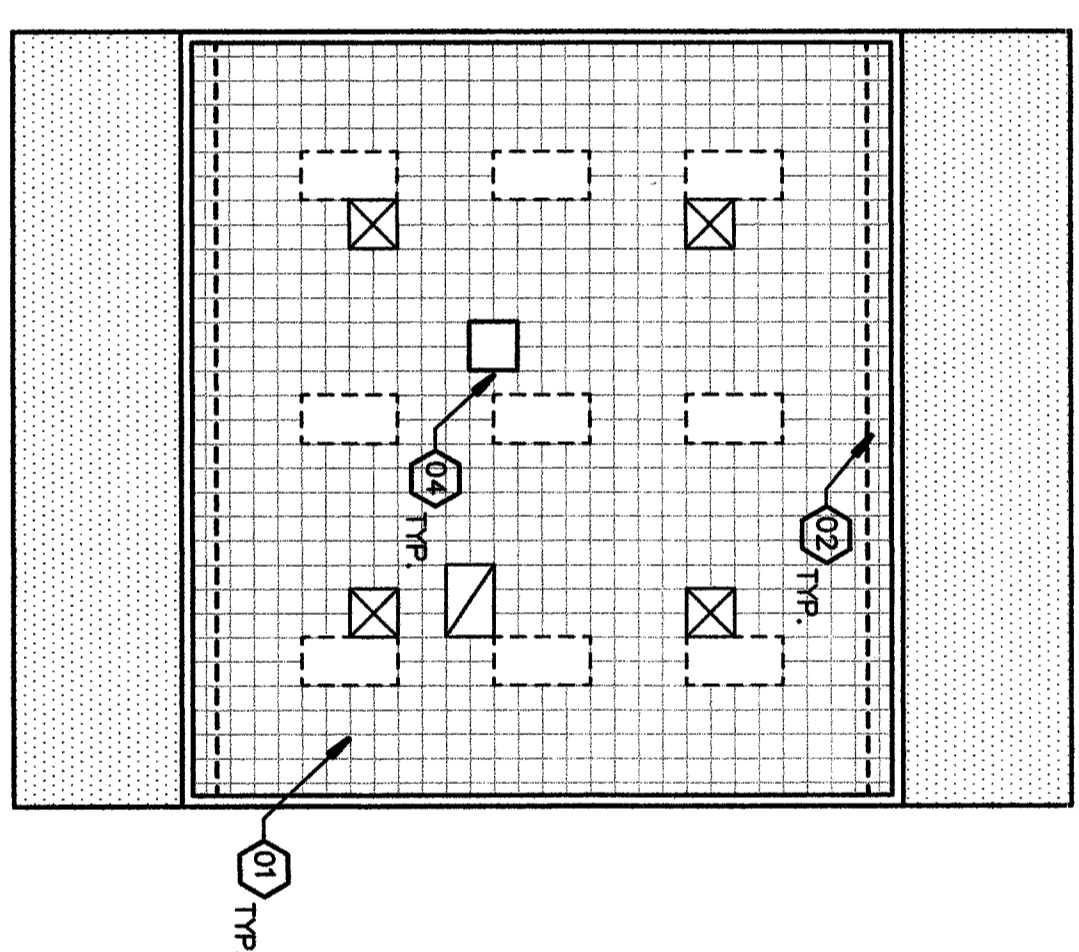


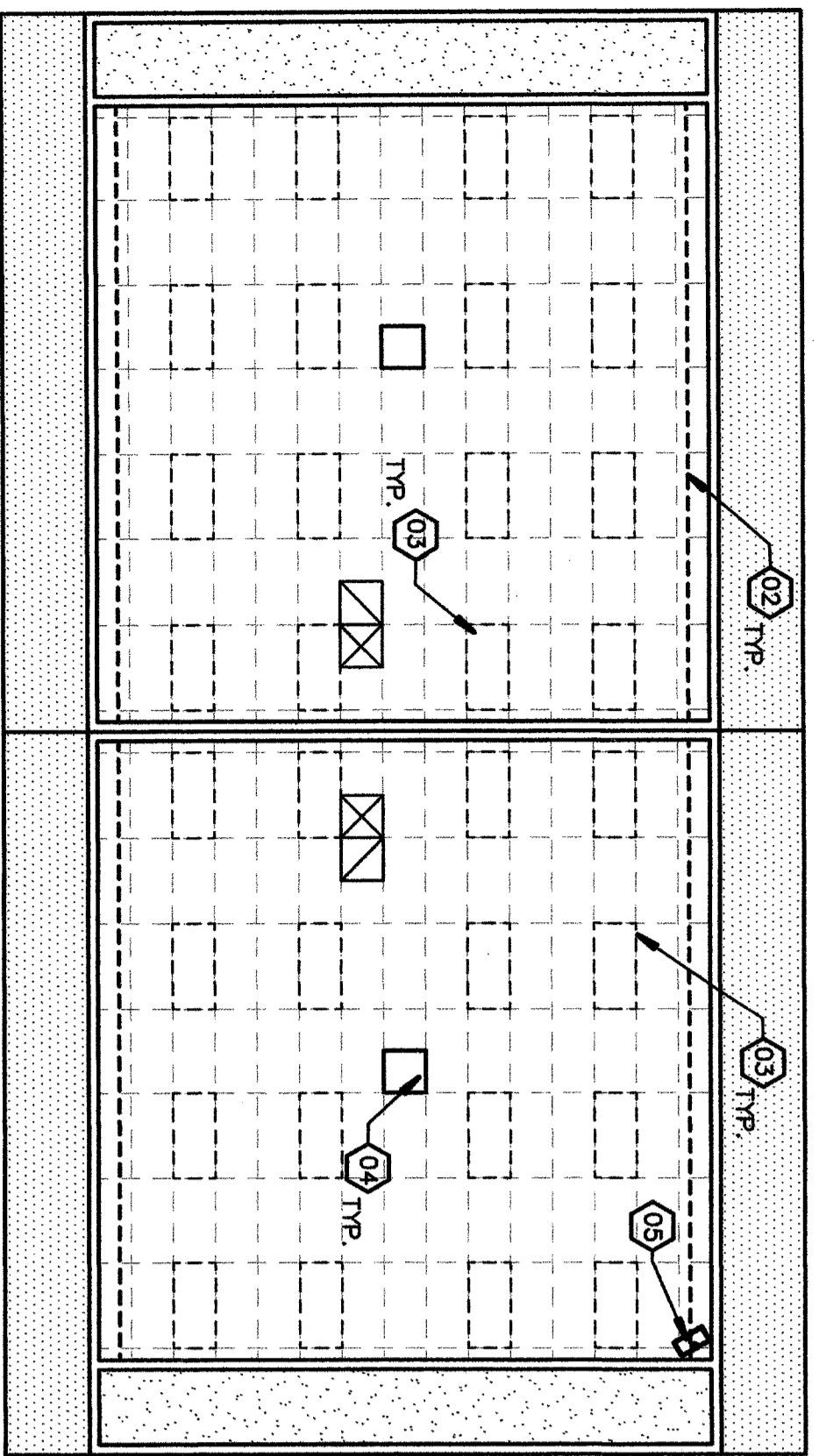
D1
 DEMO RFCP R-1.A - R-1.D
 1/8"=1'-0"



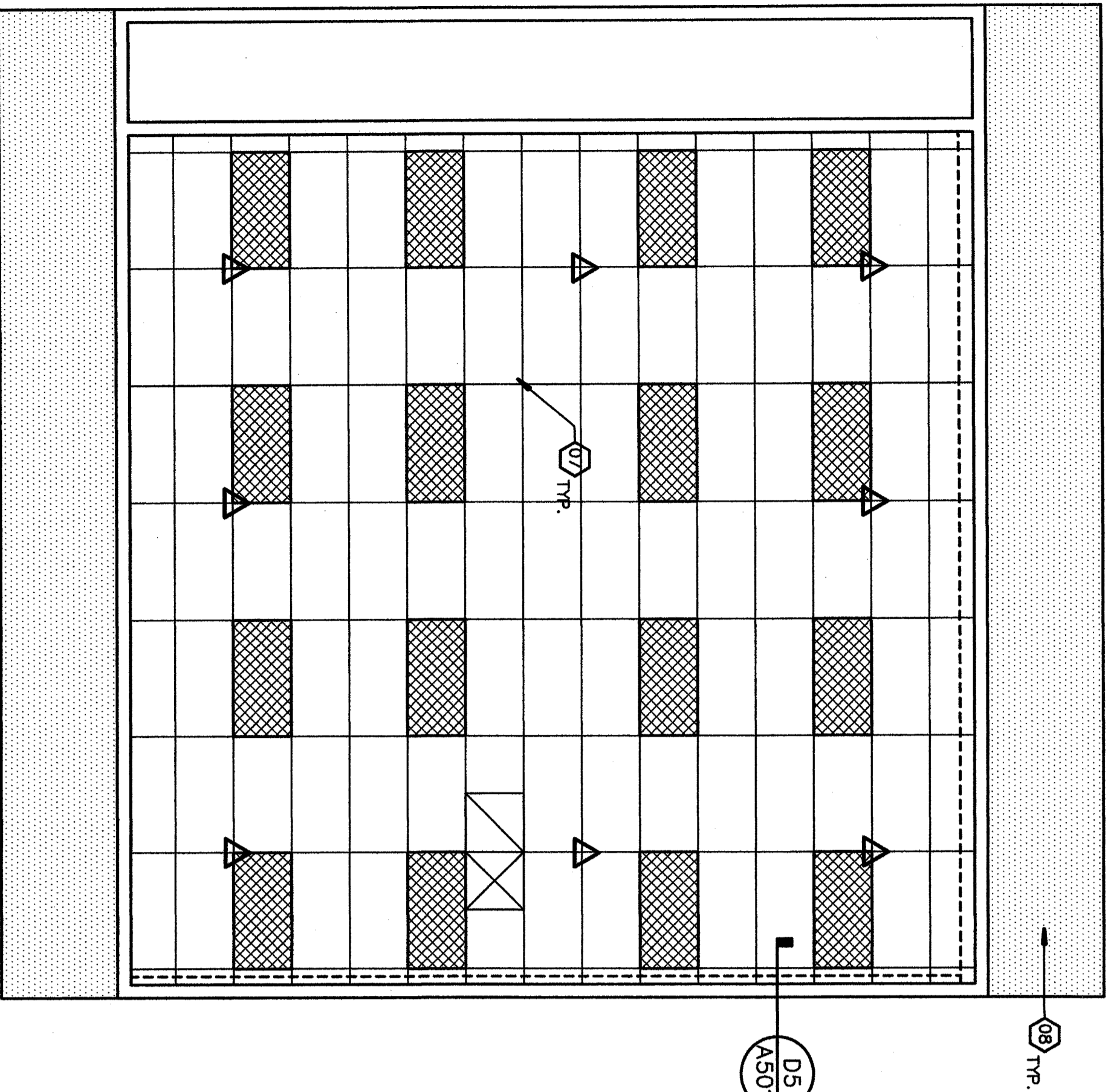
D3
 DEMO RFCP R-3.A
 1/8"=1'-0"



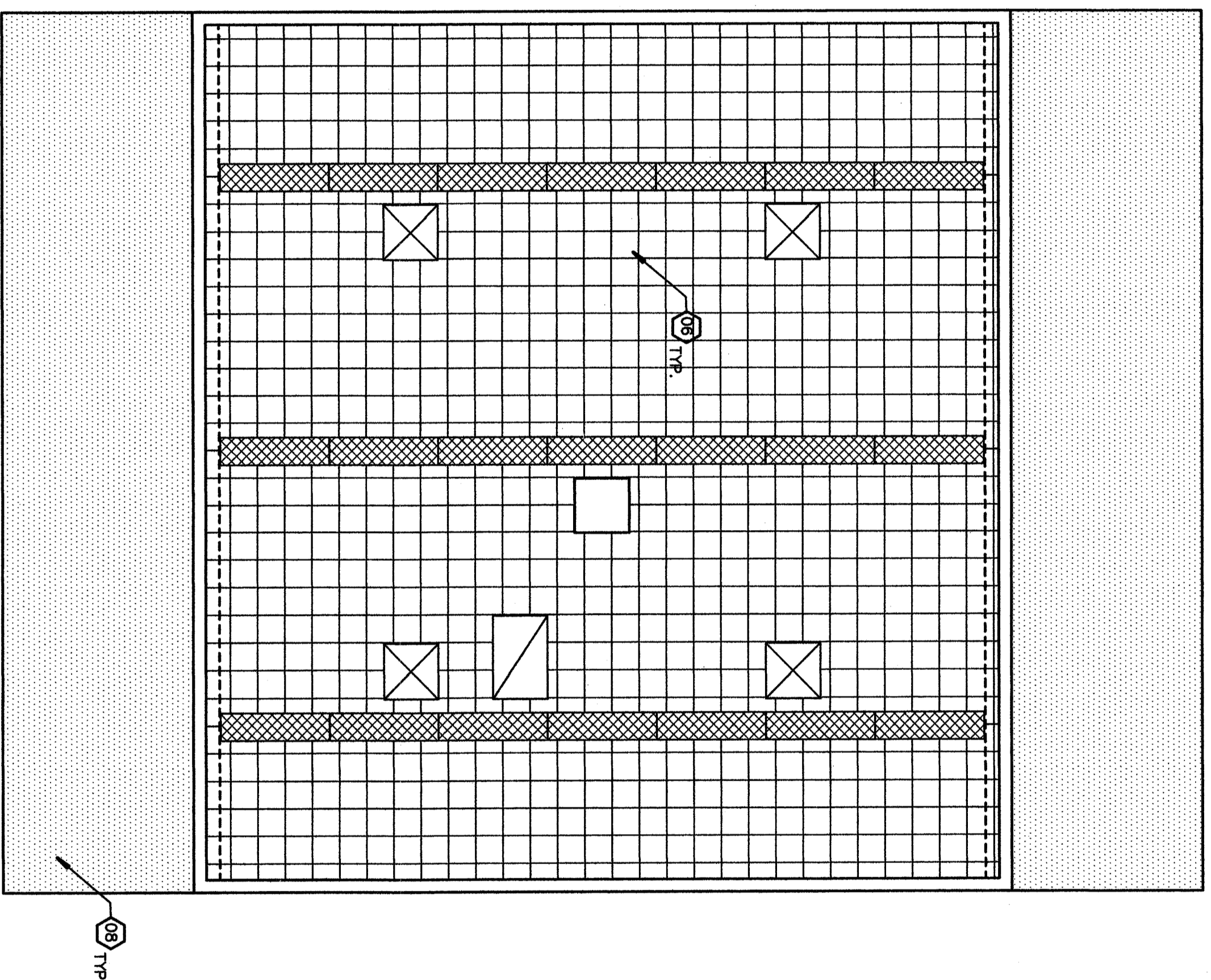
D4
 DEMO RFCP R-6.B - R-6.E
 1/8"=1'-0"



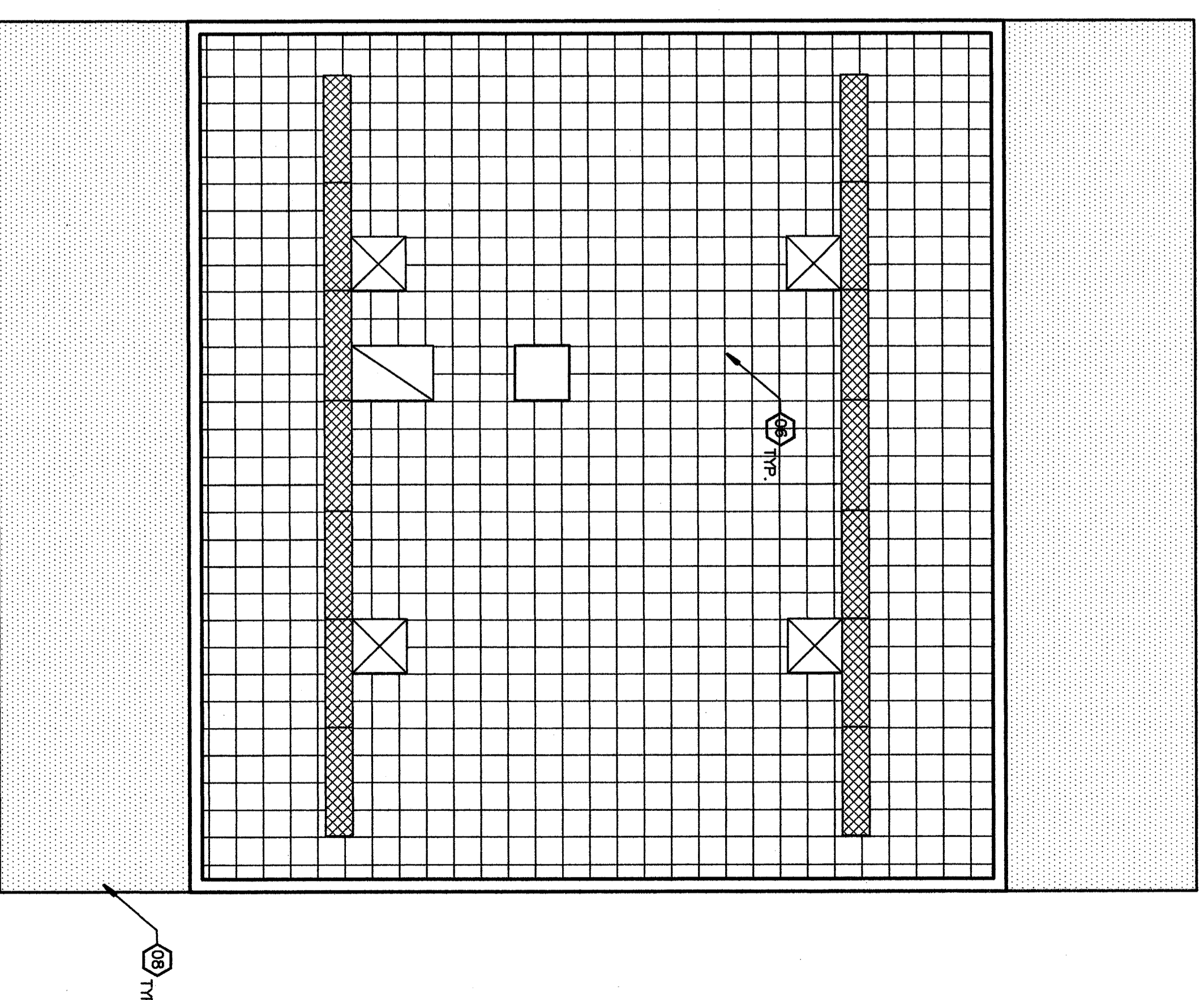
C2
 DEMO RFCP R-7.A & R-7.B
 1/8"=1'-0"



A2
 TYPICAL CEILING PLAN R-7.A & R-7.B
 1/4"=1'-0"



B4
 TYPICAL RFCP R-1.A THRU R-1.D & R-6.B THRU R-6.E
 1/4"=1'-0"



C5
 RFCP BUILDING R-3.A
 1/4"=1'-0"

KEYNOTES
 THIS SHEET ONLY

- 01 REMOVE (E) 12 x 12 ACOUSTIC TILE AND SURFACE MOUNTED LIGHT FIXTURES
- 02 REMOVE (E) DARKENING GRAYES & TRACK PRIOR TO REMOVAL OF (E) SUSPENDED CEILING, TURN OVER TO DISTRICT.
- 03 REMOVE (E) SUSPENDED CEILING GRID SYSTEM & LIGHTING
- 04 REMOVE (E) SUSPENDED PROJECTOR HANGER, WHERE OCCURS PROVIDE INSTALL TUBE STEEL PROJECTOR HANGER-SEE DETAIL C5/A-501. CUT OUT BAR ACOUSTIC TILE AS REQUIRED TO ALLOW HANGER TO PASS THROUGH.
- 05 EXISTING CEILING MOUNT TV BRACKET TO REMAIN
- 06 PROVIDE/INSTALL 12" x 12" ACOUSTIC TILE TO SUBSTRATE
- 07 PROVIDE/INSTALL LIGHT FIXTURES-SEE ELECTRICAL DWGS.
- 08 PREP/PATCH SPOTT AS REQUIRED-PAINT.

CEILING LEGEND

2 x 4 "T"-BAR CEILING SYSTEM WITH ACOUSTIC LAY IN PANELS

LIGHT FIXTURE-SEE ELECTRICAL

LIGHT FIXTURE TO BE REMOVED-SEE ELECTRICAL.

(E) 12" x 12" GUE-ON ACOUSTIC TILE TO REMAIN

(E) GYPSUM PLASTER

(E) PLYWOOD SPOTT

SUPPLY AIR REGISTER SEE MECHANICAL

RETURN AIR REGISTER SEE MECHANICAL

LOCATION OF SPLAY WIRE SEE DETAIL 05/A-501

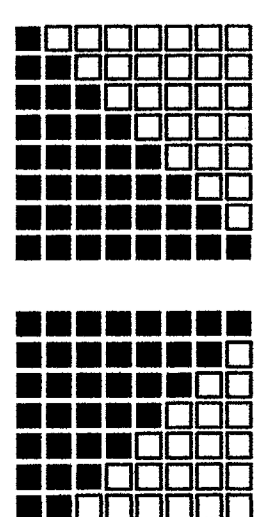
Item No. 15: Refer to Sheet A-134
 Revise Keynote #4 to read "remove existing suspended projector hanger where occurs provide install tube steel projector hanger per detail C5/A-501. Cut 'T' Bar acoustic tile as required to allow for metal frame attachments to rod structure above."

IDENTIFICATION STAMP
 DIVISION OF STATE ARCHITECT
 OFFICE OF RESOLUTION SERVICES
 APRIL 03-107003
 FILE # 16-5
 DATE _____ AC _____ FS _____ SS _____

DANNY F. ORDIZ, AIA
 ARCHITECT C-44,728
 WILLIAM L. MELBY, AIA
 ARCHITECT C-16,885
 CONSULTANT

5600 KING AVENUE SUITE 200
 BAKERSFIELD, CALIFORNIA 93309
 TELEPHONE (805) 382-6298
 FACSIMILE (805) 382-6291

**ORDIZ
 MELBY
 ARCHITECTS, INC.**



MODERNIZATION AT
 CURRAN MIDDLE
 SCHOOL
 FOR:
**BAKERSFIELD
 CITY SCHOOL
 DISTRICT**

1116 LYNNIC WAY
 BAKERSFIELD
 CALIFORNIA
 93309

BUILDING KEY PLAN

MARK	DATE	DESCRIPTION
CD	09/23/07	ADDENDUM 1
AD	09/11/07	ADDENDUM 2
AD	1/16/07	ADDENDUM 3

JOB NUMBER: 2002240
 DATE: 04-02-2007
 TIME: 12:58 PM
 DRAWN BY: TT
 CHECKED BY: TT
 CHECK AND VERIFY ALL DIMENSIONS BEFORE REPORT PROCEEDING WITH THE WORK. THE DRAWING, REVISIONS, AND DESIGN INFORMATION ON THIS SHEET ARE THE PROPERTY OF THE ARCHITECT AND ARE NOT TO BE REPRODUCED OR TRANSMITTED IN ANY FORM OR BY ANY MEANS, ELECTRONIC OR MECHANICAL, WITHOUT THE WRITTEN PERMISSION OF THE ARCHITECT.

**TYP RFCP & DEMO
 RELOS R-1.A TO R-1.D
 R-3.A, R-6.B TO R-6.E,
 R-7.A & R-7.B**
 SHEET IDENTIFICATION NUMBER
A-134
 SHEET 10 OF 46