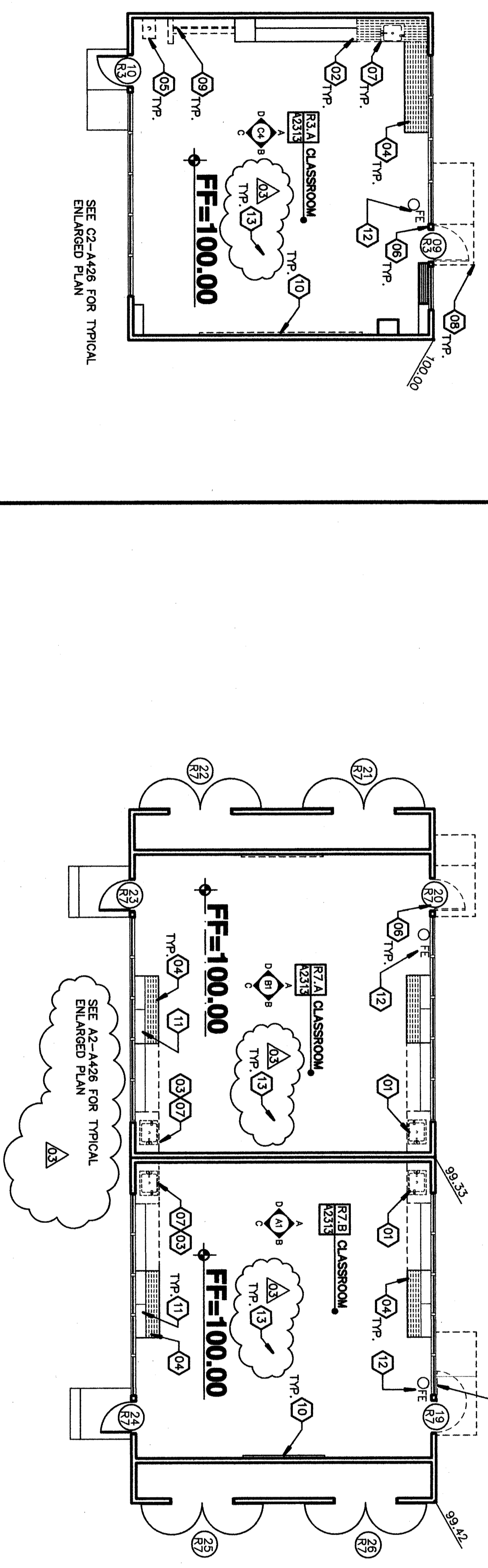
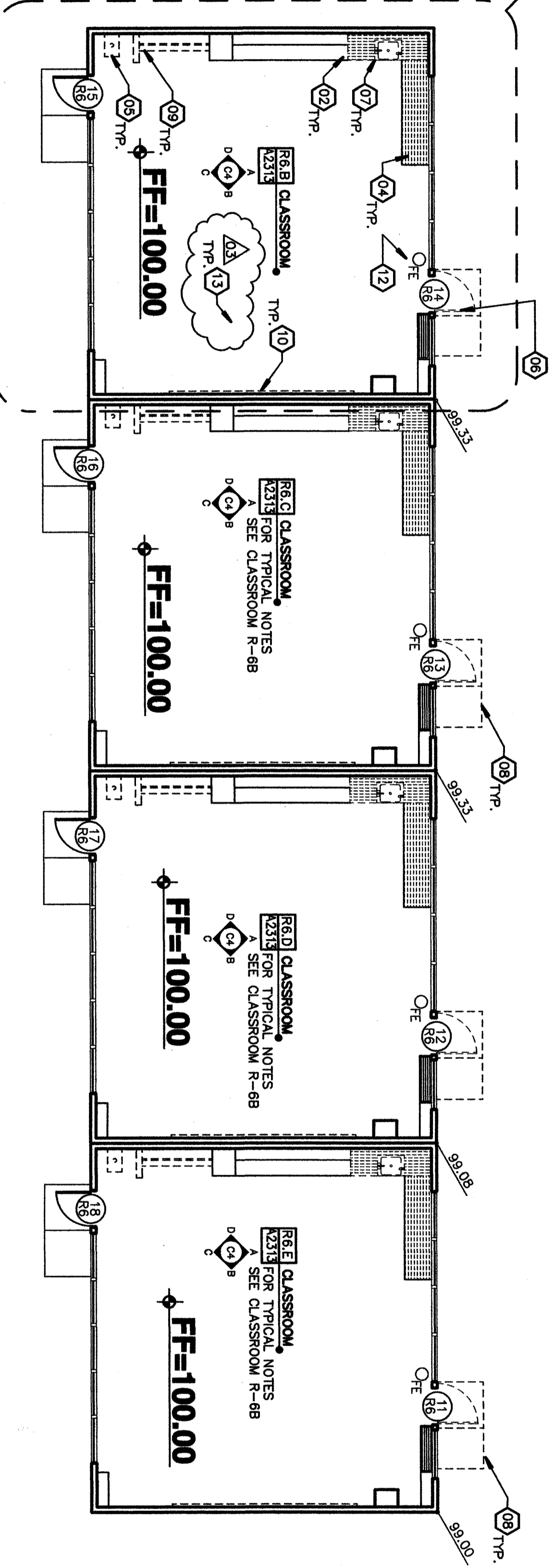


**D2** DEMO PLAN 'R-1.A', 'R-1.B', 'R-1.C' & 'R-1.D'  
 1/8"=1'-0"



**C2** DEMO PLAN 'R-3.A'  
 1/8"=1'-0"

**C3** DEMO PLAN 'R-7.A' & 'R-7.B'  
 1/8"=1'-0"



**A2** FLOOR/DEMO PLAN 'R-6.B', 'R-6.C', 'R-6.D' & 'R-6.E'  
 1/8"=1'-0"

**KEYNOTES**

- 01 REMOVE SINK & CABINET. CAP PLUMBING SURVEY/WASTE LINES. PATCH BASE CABINET - SEE ENLARGED PLAN FOR ADDITIONAL WORK.
- 02 MODIFY PORTION OF BASE CABINET(SOUTH OF SINK). REMOVE RIGHT DOOR AND MODIFIED CABINET. PROVIDE SHELF AT MODIFIED CABINET.
- 03 REMOVE/REPLACE SINK. REMOVE EASEL CABINETS (ON TOP OF BASE CABINET). SEE DEMO PLAN R-1A FOR ADDITIONAL WORK.
- 04 REMOVE/REPLACE (E) JUNG COUNTER (OR PLASTIC LAMINATE COUNTER) CHALK BOARD. REMOVE/REPLACE (E) CHALK BOARD. (SEE ENLARGED PLAN FOR ADDITIONAL WORK).
- 05 REMOVE ABANDON HEATER UNIT PATCH WALL / FLOOR AS REQUIRED MATCH FINISHES.
- 06 REMOVE (E) 3'-0" DOOR/FRAME-INTILL OPENING AS REQUIRED FOR INSTALLATION OF 3'-0" H.W. DOOR/FRAME/HARDWARE-SEE DEMO PLAN R-1A FOR ADDITIONAL WORK.
- 07 DEMO EXISTING SINK & CABINET TO PROVIDE NEW ACCESSIBLE CABINET. REMOVE SINK. SEE PLUMBING DWGS. REMOVE DOORS BASE CABINET. REMOVE/REPLACE (E) CONCRETE PUMP & HAND RAIS. SEE ENLARGED PLAN ON SHEET A-124 & DTL 01/AS01.
- 08 REMOVE/REPLACE (E) CONCRETE PUMP & HAND RAIS. SEE ENLARGED PLAN ON SHEET A-124 & DTL 01/AS01.
- 09 REMOVE PARTIAL WALL SHELF & CLOSET ROOF PATCH WALL AS REQUIRED MATCH ALL FINISHES.
- 10 REMOVE EXISTING CHALK BOARD REPLACE WITH LIQUID MARKER BOARD.
- 11 EXISTING UPPEERS TO REMAIN.
- 12 REMOVE/INSTALL FIRE EXTINGUISHER-MOUNT 48" ABOVE F.F.
- 13 PROVIDE INSTALL NEW SUB-FLOOR PER SPECIFICATIONS OVER EXISTING SUB-FLOOR TO INSURE UNIFORM AND SMOOTH FINISH. SUB-FLOOR IS TO BE INSTALLED AFTER ABATEMENT OF ACM tile and mastic has been removed and room has been certified clean of all hazardous materials. New flooring elevation is to be coordinated with new concrete ramp special.

Item No. 11: Refer to Sheet A-124  
 #11/1  
 #11/2  
 #11/3  
 Reference to enlarged plan for existing relocatable classroom R-7.A & R-7.B are indicated. Refer to enlarged plan for existing relocatable classroom R-7.A & R-7.B are indicated. Refer to enlarged plan for existing relocatable classroom R-7.A & R-7.B are indicated. Refer to enlarged plan for existing relocatable classroom R-7.A & R-7.B are indicated.

**LEGEND**

- EXISTING 2x6 STUD WALL
- (E) PLASTIC LAMINATE COUNTERTOP TO BE REMOVED
- FREE EXTINGUISHER 48" TO CENTER OF HANDLE
- DOOR SCHEDULE SEE DETAIL A5/AS01
- INTERIOR ELEVATION
- ROOM NUMBER
- EXTENSIVE ELEVATION SYMBOL
- SHEET NUMBER
- DOOR SYMBOL
- DOOR NUMBER
- DEFINITION NUMBER
- WINDOW SYMBOL
- WINDOW NUMBER
- SHEET NUMBER
- PANIC DOOR
- HANDICAP
- SECTION NUMBER
- SHEET NUMBER

**ACCESSIBLE CLEARANCE LEGEND**

NOTE: ALL DIMENSIONS ARE CLEARANCE TO FINISH MATERIALS

**DEMO LEGEND**

- 5'-0" DIAMETER CLEAR TURNING CIRCLE
- 30"x48" CLEAR AREA TYP. UNKO.
- PLUMBING FIXTURES TO BE REMOVED
- DOORS TO BE REMOVED
- 2x WALL TO BE REMOVED

**ORDIZ MELBY ARCHITECTS, INC.**  
 5500 DUNWOODY AVENUE, SUITE 200  
 BAKERSFIELD, CALIFORNIA 93309  
 TELEPHONE: (805) 332-2298  
 FACSIMILE: (805) 332-4291

DATE: \_\_\_\_\_ FILE # 15-6  
 AC: \_\_\_\_\_ FS: \_\_\_\_\_ SS: \_\_\_\_\_

**BUILDING KEY PLAN**

MARK	DATE	DESCRIPTION
SD	06/22/00	
CD	09/23/07	ADDENDUM 1
AD	09/11/07	ADDENDUM 2
AD	11/01/07	ADDENDUM 3

1116 LYNNIC WAY  
 BAKERSFIELD  
 CALIFORNIA  
 93309

MODERNIZATION AT  
 CURRAN MIDDLE  
 SCHOOL  
 FOR:  
 BAKERSFIELD  
 CITY SCHOOL  
 DISTRICT

**IDENTIFICATION STAMP**  
 DIVISION STATE ARCHITECT  
 OFFICE OF REGISTRATION SERVICES  
 APRIL 03-107003  
 FILE # 15-6

1116 LYNNIC WAY  
 BAKERSFIELD, CALIFORNIA  
 93309

DATE: \_\_\_\_\_ FILE # 15-6  
 AC: \_\_\_\_\_ FS: \_\_\_\_\_ SS: \_\_\_\_\_

2002/00  
 12:27 PM  
 03/27/2007

**TYP FL PLAN & DEMO RELOS R-1.A TO R-1.D R-3.A-R-6.B TO R-6.E, R-7.A & R-7.B**  
 SHEET IDENTIFICATION NUMBER  
**A-124**  
 SHEET 08 OF 48