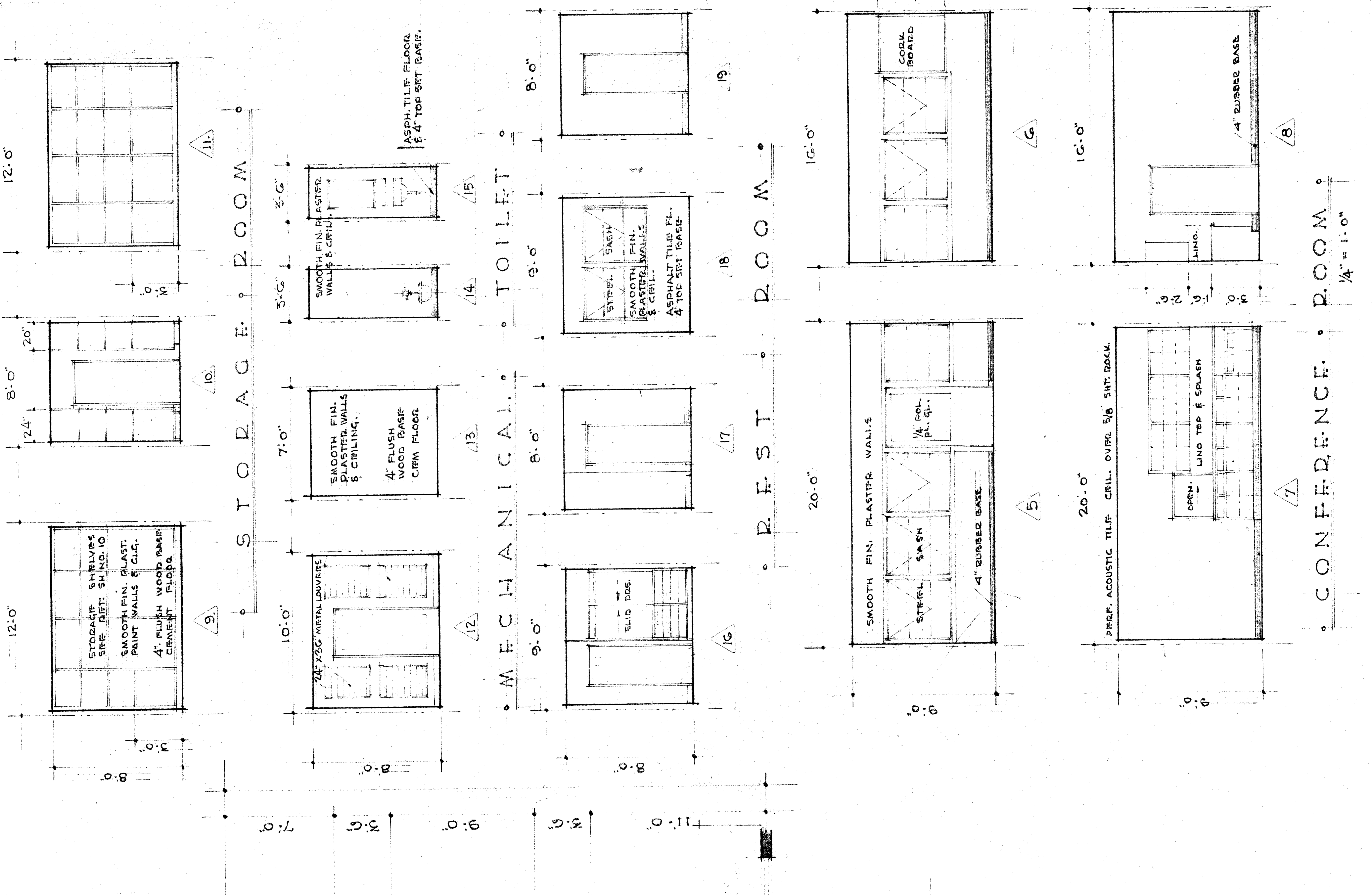


KITCHEN PLAN
1/4" = 1'-0"



KITCHEN ELEVATIONS
1/4" = 1'-0"

NOTE: CONTRACTOR TO VERIFY ALL DIMENSIONS AND MATERIALS AS SHOWN ON THIS SET OF PLANS. ALL DIMENSIONS ARE TO FACE UNLESS OTHERWISE NOTED. ALL MATERIALS AND FINISHES TO BE AS SHOWN ON THIS SET OF PLANS. ALL WORK TO BE DONE IN ACCORDANCE WITH THE CITY OF BAKERSFIELD SPECIFICATIONS AND THE CALIFORNIA BUILDING CODE. ALL WORK TO BE DONE IN ACCORDANCE WITH THE CITY OF BAKERSFIELD SPECIFICATIONS AND THE CALIFORNIA BUILDING CODE.

DIVISION OF ARCHITECTURE
STATE OF CALIFORNIA
16079
APPROVED MAY 9 1957
BY RESOLUTION
FILED IN BAKERSFIELD

BAKERSFIELD CITY SCHOOL DISTRICT
APPROVED MAY 9 1957
BOARD OF EDUCATION
BY RESOLUTION
FILED IN BAKERSFIELD

MULTI-PURPOSE ROOM
HEICHT STREET SCHOOL DISTRICT
BAKERSFIELD CALIFORNIA

ALFORD, THOMAS & LEYDENFROST
C. B. ALFORD • W. J. THOMAS • ARCHITECTS • H. B. LEYDENFROST
BAKERSFIELD • CALIFORNIA
MAY 9 1957