

WINDOW & DOOR SCHEDULE
SCALE: 1/4" = 1'-0"

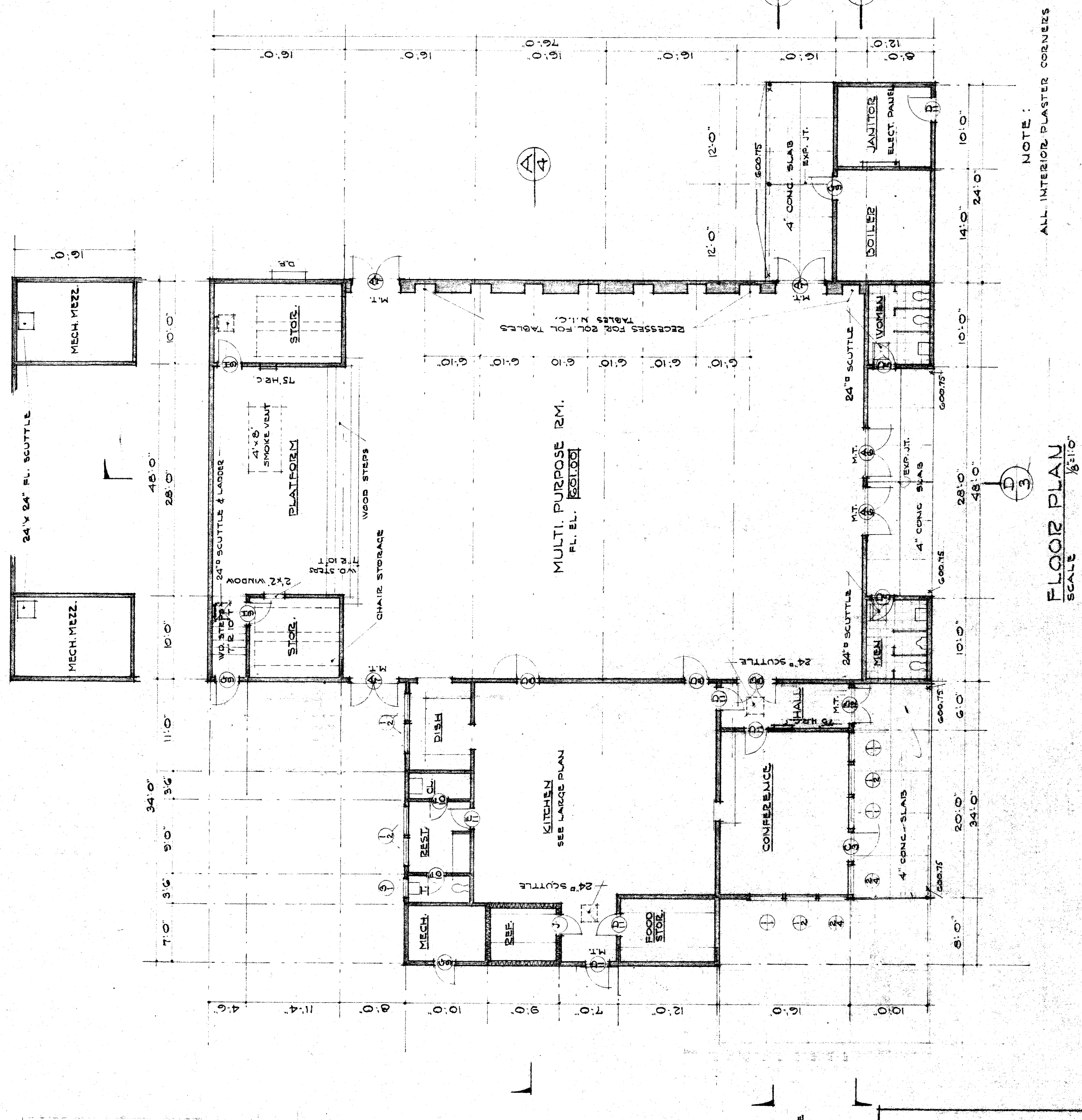
NO.	TYPE	FINISH	OPERATING	SCREEN	REMARKS
1	3'-0" x 4'-0" Double Hung	1/2" Birch Ply. Op.	1/2" Birch	1/2" Birch	CLASS C FIRE DE. HELP CLOSING
2	3'-0" x 3'-0" Double Hung	1/2" Birch Ply. Op.	1/2" Birch	1/2" Birch	CLASS C FIRE DE. HELP CLOSING
3	3'-0" x 3'-0" Double Hung	1/2" Birch Ply. Op.	1/2" Birch	1/2" Birch	CLASS C FIRE DE. HELP CLOSING
4	3'-0" x 3'-0" Double Hung	1/2" Birch Ply. Op.	1/2" Birch	1/2" Birch	CLASS C FIRE DE. HELP CLOSING
5	3'-0" x 3'-0" Double Hung	1/2" Birch Ply. Op.	1/2" Birch	1/2" Birch	CLASS C FIRE DE. HELP CLOSING
6	3'-0" x 3'-0" Double Hung	1/2" Birch Ply. Op.	1/2" Birch	1/2" Birch	CLASS C FIRE DE. HELP CLOSING
7	3'-0" x 3'-0" Double Hung	1/2" Birch Ply. Op.	1/2" Birch	1/2" Birch	CLASS C FIRE DE. HELP CLOSING
8	3'-0" x 3'-0" Double Hung	1/2" Birch Ply. Op.	1/2" Birch	1/2" Birch	CLASS C FIRE DE. HELP CLOSING
9	3'-0" x 3'-0" Double Hung	1/2" Birch Ply. Op.	1/2" Birch	1/2" Birch	CLASS C FIRE DE. HELP CLOSING
10	3'-0" x 3'-0" Double Hung	1/2" Birch Ply. Op.	1/2" Birch	1/2" Birch	CLASS C FIRE DE. HELP CLOSING
11	3'-0" x 3'-0" Double Hung	1/2" Birch Ply. Op.	1/2" Birch	1/2" Birch	CLASS C FIRE DE. HELP CLOSING
12	3'-0" x 3'-0" Double Hung	1/2" Birch Ply. Op.	1/2" Birch	1/2" Birch	CLASS C FIRE DE. HELP CLOSING
13	3'-0" x 3'-0" Double Hung	1/2" Birch Ply. Op.	1/2" Birch	1/2" Birch	CLASS C FIRE DE. HELP CLOSING
14	3'-0" x 3'-0" Double Hung	1/2" Birch Ply. Op.	1/2" Birch	1/2" Birch	CLASS C FIRE DE. HELP CLOSING
15	3'-0" x 3'-0" Double Hung	1/2" Birch Ply. Op.	1/2" Birch	1/2" Birch	CLASS C FIRE DE. HELP CLOSING

WINDOR OR DOOR TYPE
JAMB DETAIL

DIVISION OF SCHOOL HOUSE PLANNING

APPROVED: JUL 9, 1957
DIVISION OF ARCHITECTURE
STATE OF CALIFORNIA
16079

NOTE: CONTRACTOR IS TO VERIFY ALL DIMENSIONS ON THE WORK AND BE RESPONSIBLE FOR CORRECTING ANY DISCREPANCIES AND OMISSIONS OF THE DRAWINGS.



ROOM FINISH SCHEDULE

ROOM	FLOOR	BASE	TRIM	WAINSCOT	WALLS	CEILING	NOTES
MULTI PURPOSE PLATFORM	ASPHALT TILE 1"x4" T&G BOND	4" RUBBER	WOOD PT.	6"-8" LINO. WALL	SAND FINI. PLAS. PAINTED	1/2" ACOUSTIC TILE ON 1/2" SH. BK. SAND FINI. PLAS. PAINTED	1/2" ACOUSTIC TILE ON 1/2" SH. BK. SAND FINI. PLAS. PAINTED
STORAGE	ASPHALT TILE	"	METAL PT.	"	SAND FINI. PLAS. PAINTED	"	"
KITCHEN	ASPHALT TILE G.P.	"	"	"	SMOOTH FINI. PLAS. PT.	1/2" AC. TILE ENAMELED	TILE ON 1/2" GYPSUM BD.
DISH	ASPHALT TILE	"	"	"	"	"	"
FOOD STOR.	ASPHALT TILE	"	"	"	"	"	"
REST RM.	CERAMIC TILE	"	"	"	"	"	"
TOILET	ASPHALT TILE	6" CERAMIC TILE	"	"	"	"	"
CLOSET	"	4" RUBBER	"	"	"	"	"
CONFERENCE	"	"	"	"	"	"	"
HALL	"	"	"	"	"	"	"
REFRIGERATOR	CONCRETE	"	"	"	"	"	"
MECHANICAL	"	"	"	"	"	"	"
BOILER	"	"	"	"	"	"	"
MEN & WOMEN	"	"	"	"	"	"	"
MECH. MEZZ.	CERAMIC TILE	"	"	"	"	"	"
"	6" PLVD	"	"	"	"	"	"

MULTI-PURPOSE ROOM
HEIGHT STREET SCHOOL
BAKERSFIELD CITY SCHOOL DISTRICT
BAKERSFIELD CALIFORNIA

APPROVED: JUL 9, 1957
DIVISION OF ARCHITECTURE
STATE OF CALIFORNIA
16079

NOTE: CONTRACTOR IS TO VERIFY ALL DIMENSIONS ON THE WORK AND BE RESPONSIBLE FOR CORRECTING ANY DISCREPANCIES AND OMISSIONS OF THE DRAWINGS.

AIA

ALFORD, THOMAS & LEYDENFROST
C. B. ALFORD • W. J. THOMAS • ARCHITECTS • H. B. LEYDENFROST
BAKERSFIELD CALIFORNIA

ALFORD, THOMAS & LEYDENFROST
MAY 9, 1957