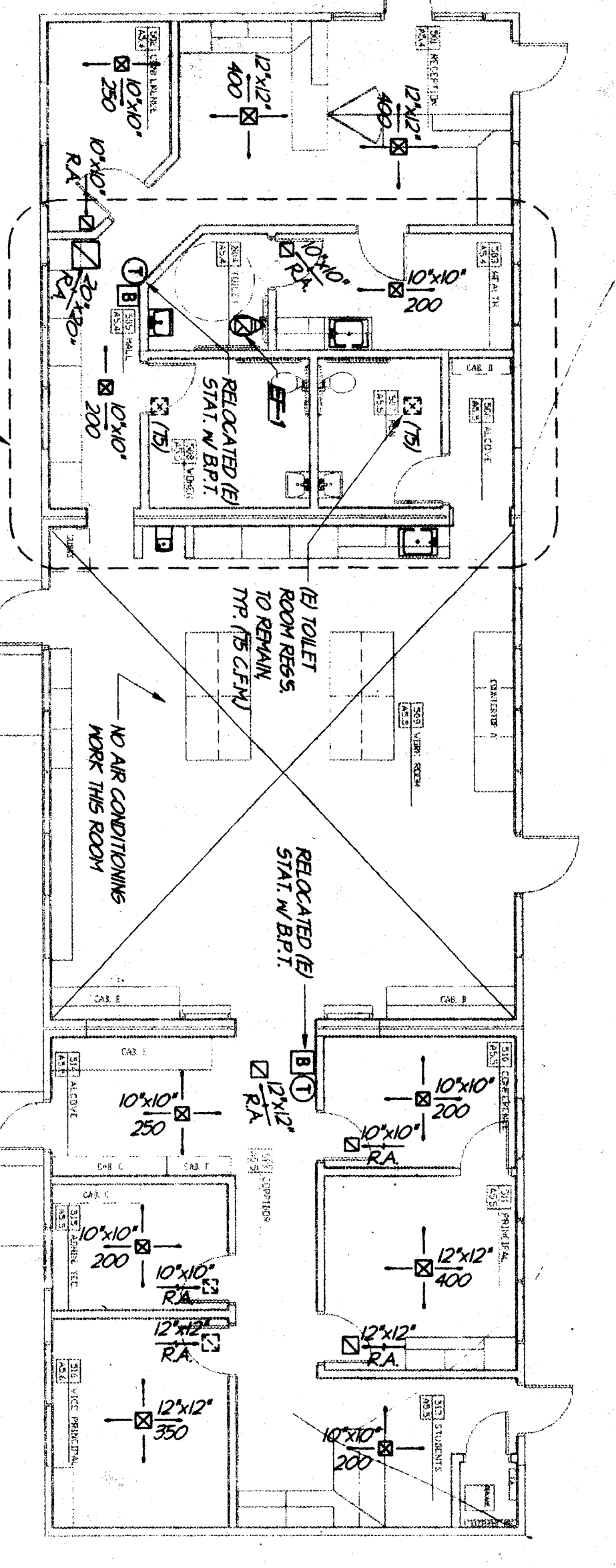
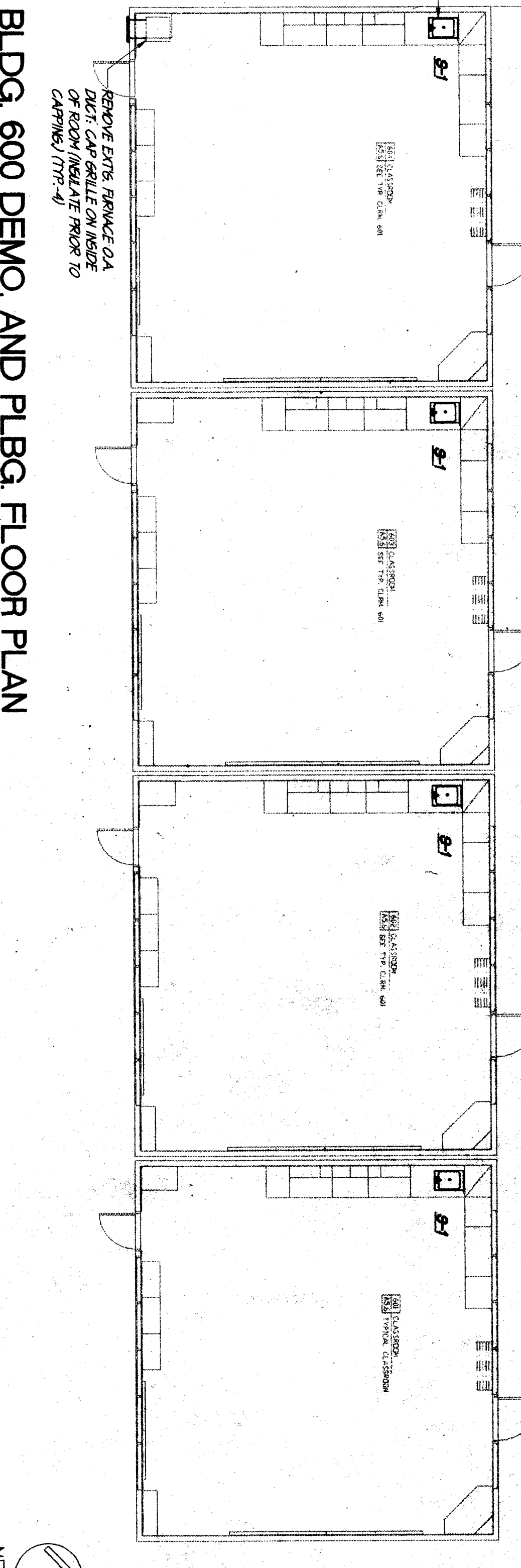


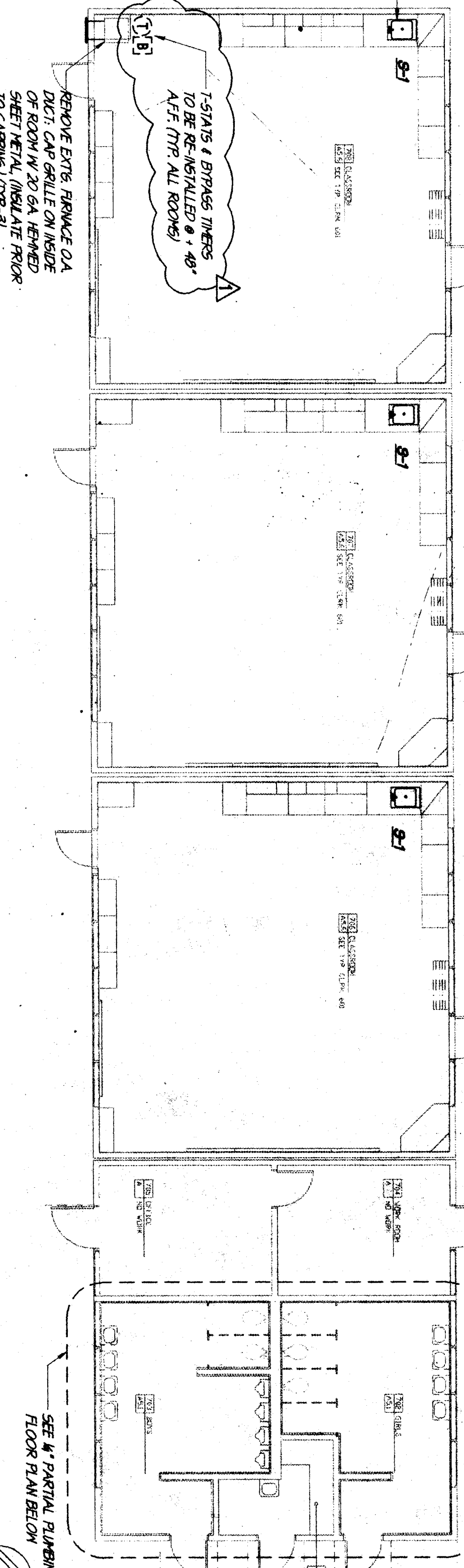
BLDG. 500 DEMO. FLOOR PLAN
SCALE: 1/8"=1'-0"
REMOVE EI TOILET ROOMS
REGISTER TO REMAIN
NO WORK
REMOVE EI TOILET ROOMS
REGISTER TO REMAIN
NO WORK



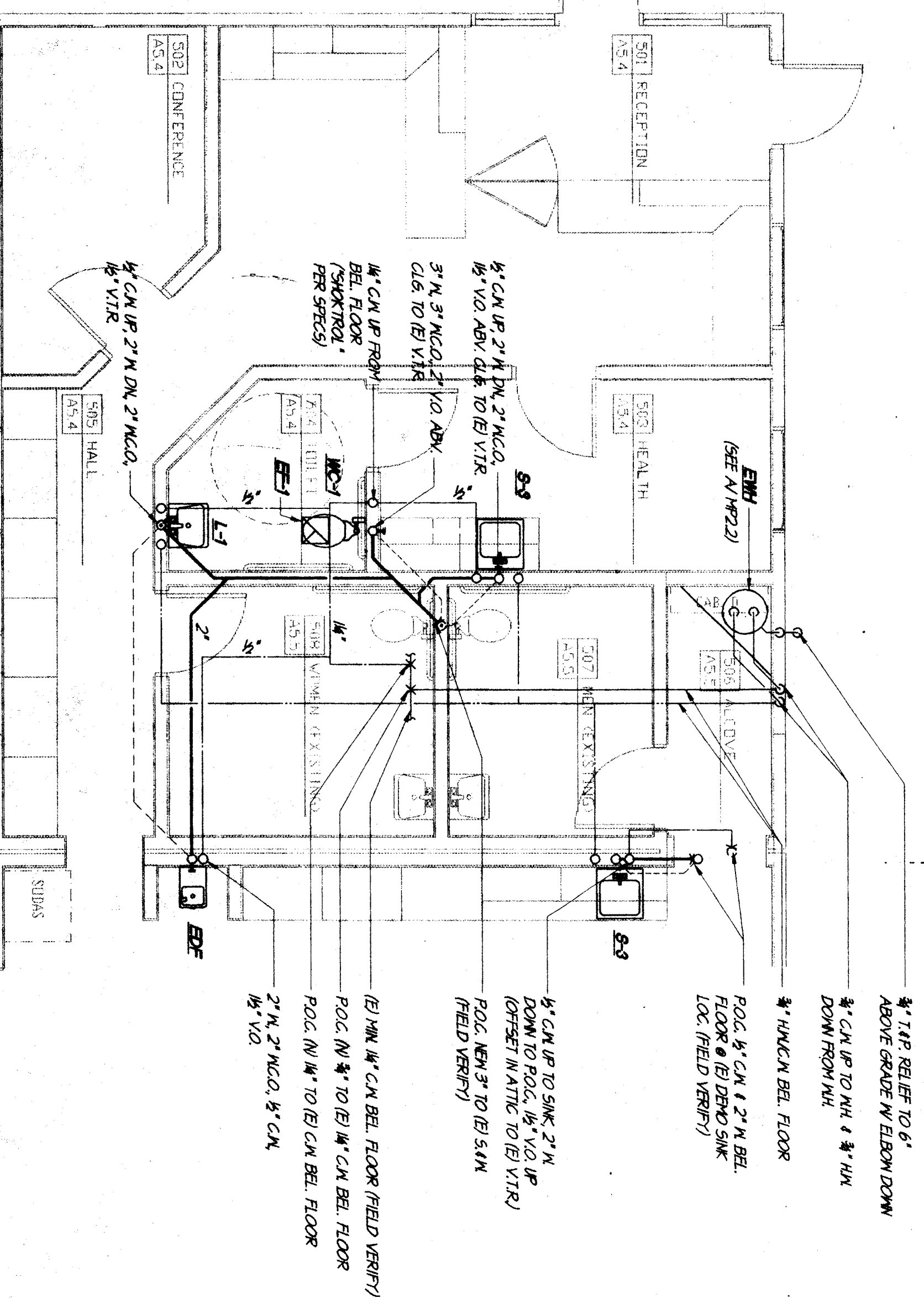
BLDG. 500 PLBG. FLOOR PLAN
SCALE: 1/8"=1'-0"
REMOVE EI TOILET ROOMS
REGISTER TO REMAIN
NO WORK
REMOVE EI TOILET ROOMS
REGISTER TO REMAIN
NO WORK



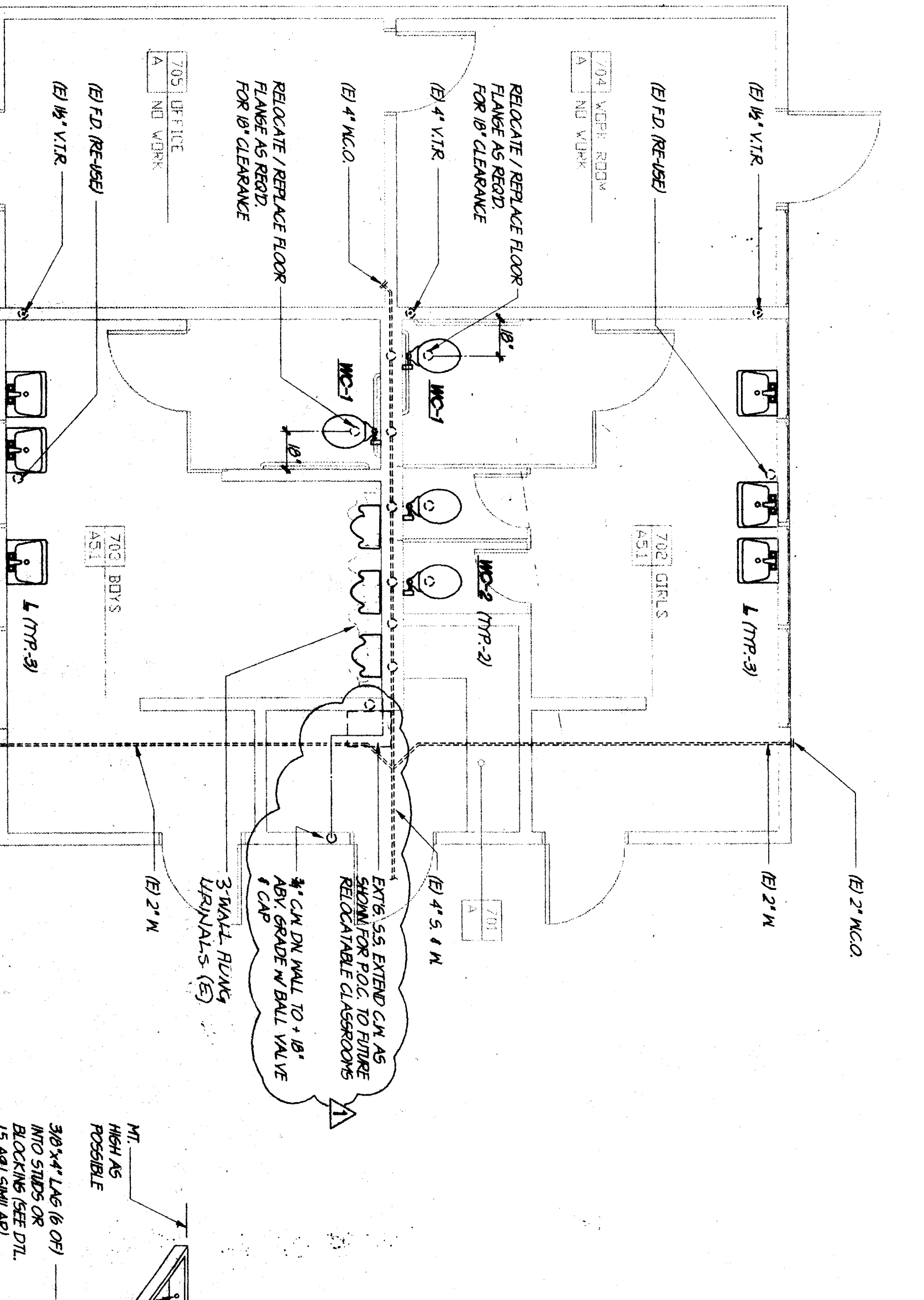
BLDG. 600 DEMO. AND PLBG. FLOOR PLAN
SCALE: 1/8"=1'-0"
REMOVE EI TOILET ROOMS
REGISTER TO REMAIN
NO WORK
REMOVE EI TOILET ROOMS
REGISTER TO REMAIN
NO WORK



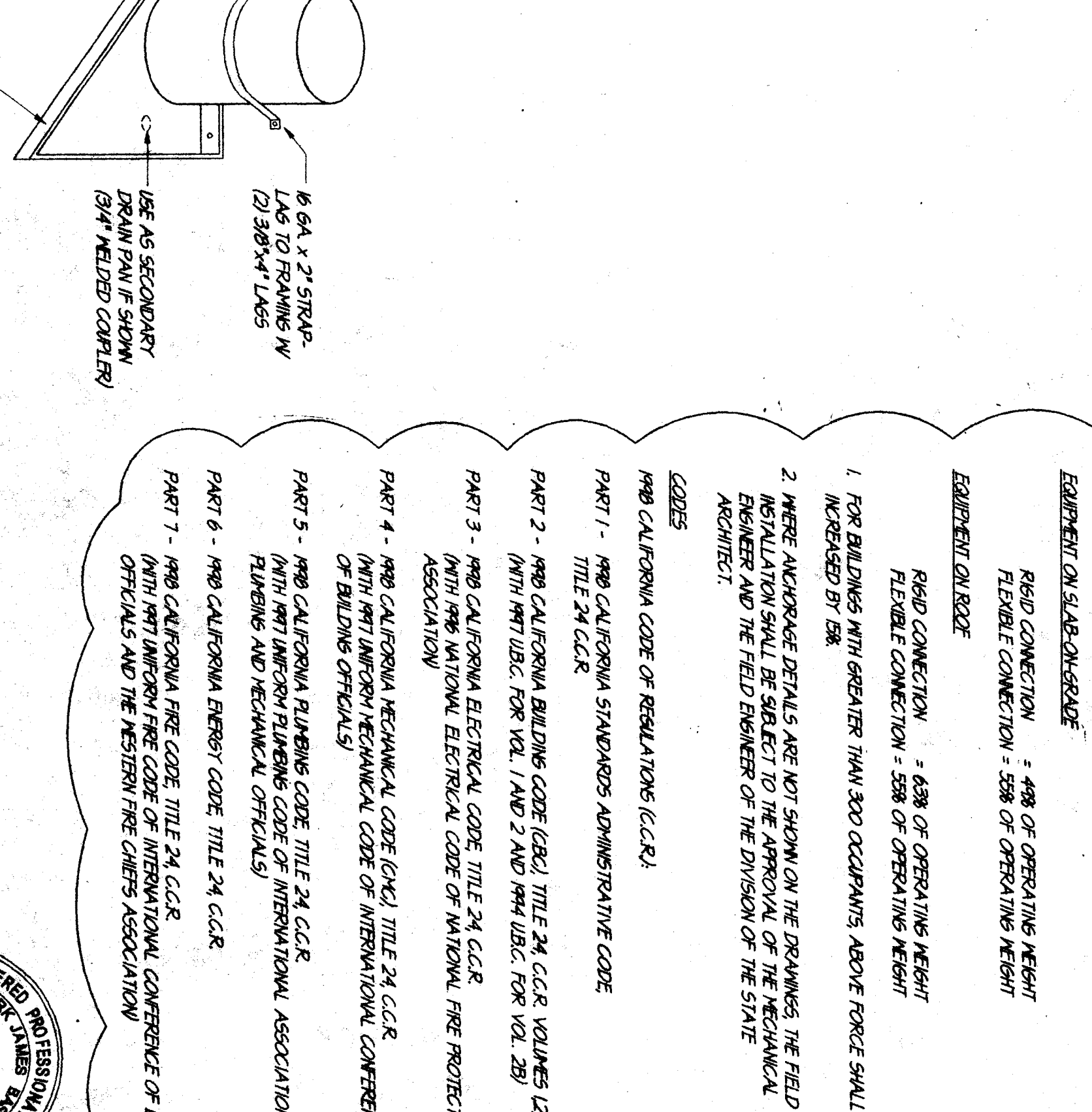
BLDG. 700 DEMO. AND PLBG. FLOOR PLAN
SCALE: 1/8"=1'-0"
REMOVE EI TOILET ROOMS
REGISTER TO REMAIN
NO WORK
REMOVE EI TOILET ROOMS
REGISTER TO REMAIN
NO WORK



PARTIAL PLBG. FLOOR PLAN (BLDG. 500)
SCALE: 1/4"=1'-0"
REMOVE EI TOILET ROOMS
REGISTER TO REMAIN
NO WORK
REMOVE EI TOILET ROOMS
REGISTER TO REMAIN
NO WORK



PARTIAL PLBG. FLOOR PLAN (BLDG. 700)
SCALE: 1/4"=1'-0"
REMOVE EI TOILET ROOMS
REGISTER TO REMAIN
NO WORK
REMOVE EI TOILET ROOMS
REGISTER TO REMAIN
NO WORK



EWH MOUNTING DETAIL
NOT TO SCALE

SCHOOL EQUIPMENT ANCHORAGE
FOR TABLES, DESKS, INDUSTRIAL EXHIBITS, ETC.
ALL ELECTRICAL AND MECHANICAL EQUIPMENT SHALL BE PROVED OR ANCHORED TO RESIST HORIZONTAL FORCE ACTING IN ANY DIRECTION PER IBC CODE 602.4 AND TABLE 6-4-D AS FOLLOWS:
EQUIPMENT ON SCHEDULE
1. FOR BUILDINGS WITH GREATER THAN 300 OCCUPANTS, ABOVE FORCE SHALL BE INCREASED BY ONE.
2. WHERE ANCHORAGE DETAILS ARE NOT SHOWN ON THE DRAWINGS, THE FIELD ENGINEER AND THE FIELD ENGINEER OF THE DIVISION OF THE STATE ARCHITECT.
CODES
PART 1 - 1997 CALIFORNIA CODE OF REGULATIONS (C.C.R.)
PART 2 - 1997 CALIFORNIA STANDARDS ADMINISTRATIVE CODE
PART 3 - 1997 CALIFORNIA BUILDING CODE (CBC), TITLE 24, C.C.R. VOLUMES 12 AND 28 (WITH AMENDMENTS FOR VOL. 1 AND 2 AND IBC 2003, FOR VOL. 28)
PART 4 - 1997 CALIFORNIA ELECTRICAL CODE TITLE 24, C.C.R. (WITH AMENDMENTS)
PART 5 - 1997 CALIFORNIA MECHANICAL CODE OF INTERNATIONAL CONFERENCE OF BUILDING OFFICIALS
PART 6 - 1997 CALIFORNIA MECHANICAL CODE OF INTERNATIONAL CONFERENCE OF BUILDING OFFICIALS
PART 7 - 1997 CALIFORNIA FIRE CODE, TITLE 24, C.C.R. (WITH AMENDMENTS)
PART 8 - 1997 CALIFORNIA FIRE CODE OF INTERNATIONAL CONFERENCE OF BUILDING OFFICIALS
PART 9 - 1997 CALIFORNIA FIRE CODE OF INTERNATIONAL CONFERENCE OF BUILDING OFFICIALS
PART 10 - 1997 CALIFORNIA FIRE CODE OF INTERNATIONAL CONFERENCE OF BUILDING OFFICIALS

ORDIZ MELBY ARCHITECTS, INC.
6420 DISTRICT BLVD. #106
BAKERSFIELD, CA 93313
TEL: (805) 832-5566
FAX: (805) 832-4291

DEPARTMENT STAMP
DIVISION OF THE STATE ARCHITECT
OFFICE OF REGULATION SERVICES
APPL. 101484
FILE
DATE
APPROVED
DANNY E. GRIZZ, AIA
ARCHITECT
WILLIAM J. MELBY, AIA
ARCHITECT

AS BUILT DRAWINGS
MODERNIZATION OF
COLLEGE HEIGHTS
OF ELEM. SCHOOL
FOR:
BAKERSFIELD
CITY
SCHOOL
DISTRICT
2551 SUNNY LN.
BAKERSFIELD,
CALIFORNIA
93305

ADDENDUM #1
DRAWING MP22
CHECK AND VERIFY ALL DIMENSIONS
BEFORE PROCEEDING WITH THE
WORK. REPORT DISCREPANCIES TO
THE ARCHITECT.

MDC
MECHANICAL ENGINEERING SERVICES
440 TRUMAN STREET, SUITE 200
BAKERSFIELD, CA 93307
TEL: (805) 832-5566
FAX: (805) 832-4291

MP
JOB NUMBER
97140
DATE
1/6/99
DRAWN BY
N.O./R.B.
SHEET
2.2
OF 3