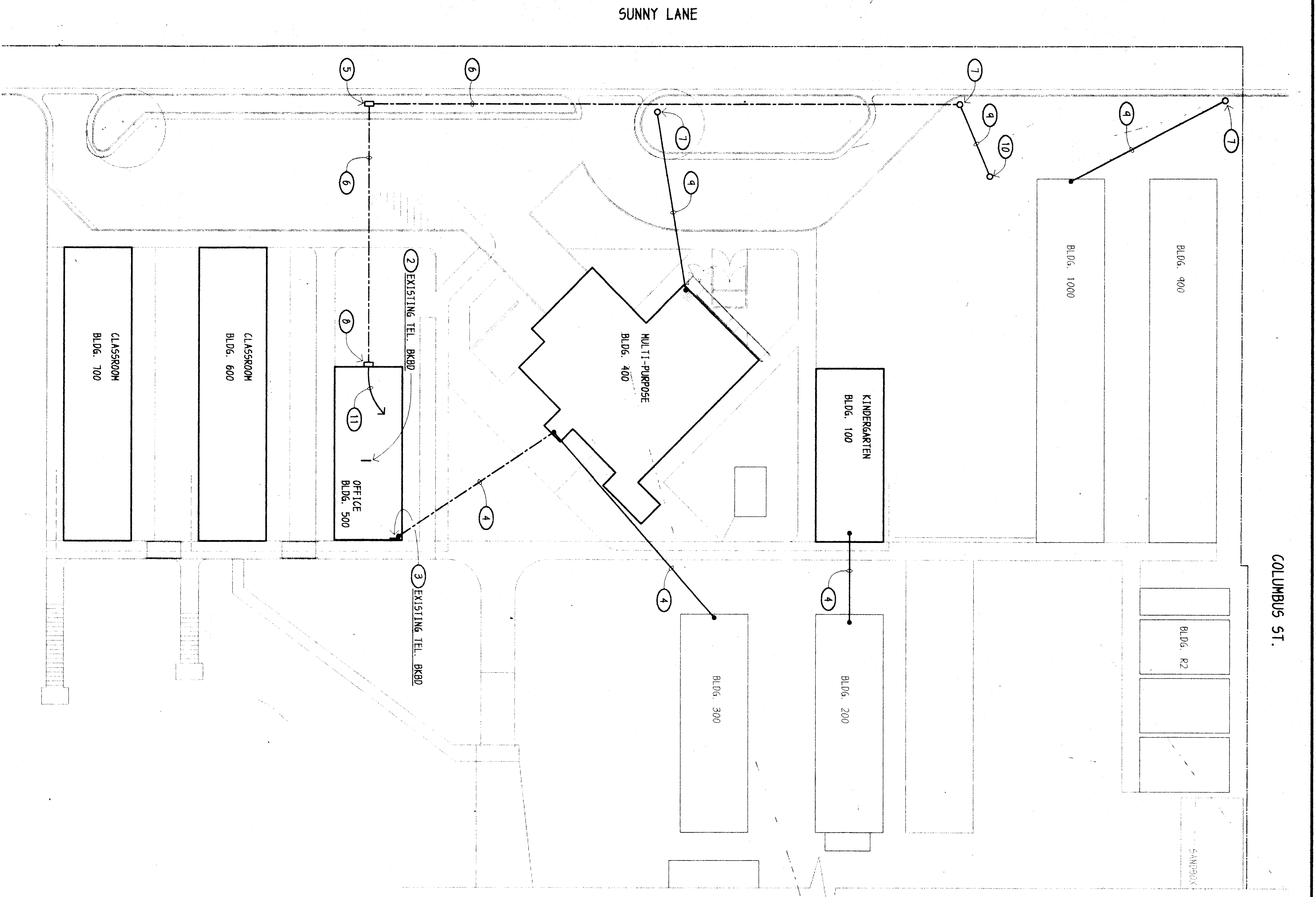


# SITE ELECTRICAL PLAN



- NOTES (THIS SHEET ONLY):
- ① TO REMAIN, NO WORK REQUIRED.
  - ② TO BE RELOCATED, DISCONNECT FROM EXISTING FEED & CABLES & RELOCATE PER SHEET #E1.0.
  - ③ TO REMAIN, SEE SHEET #E1.0 FOR ADDITIONAL REQUIRED WORK.
  - ④ CONTRACTOR IS TO REMOVE ALL IDEL OVERHEAD TEL. CABLE. CONTRACTOR TO VERIFY CABLE STATUS AT SITE BEFORE REMOVING.
  - ⑤ FIELD PULLBOX PER PACIFIC BELL REQUIREMENTS, MOUNT IN ACCESSIBLE PLANTER AREA.
  - ⑥ 2" C. (TEL.).
  - ⑦ EXISTING PACIFIC BELL POLE, VERIFY EXACT LOCATION AT SITE.
  - ⑧ PROVIDE A NEW NEM, OR LOCKABLE, SCREEN COVER CAN, 24" x 24" x 6"0. MOUNT ON WALL AT 48" TO CENTER OF CAN.
  - ⑨ ARRANGE FOR TEL. CO. TO REMOVE EXISTING TEL. CABLE.
  - ⑩ EXISTING TEL. POLE, COORDINATE WITH PACIFIC BELL FOR ITS REMOVAL.
  - ⑪ SEE SHEET #E1.0 FOR CONTINUATION OF TEL. SERVICE.

30.

*Brinkley*  
 CONSULTING ENGINEERS GROUP, INC.  
 Consulting Electrical Engineers  
 918 W. Main St. - P.O. Box 733-2671  
 Yuba, California 95991

**ORDIZ MELBY ARCHITECTS**  
 5620 DISTRICT BLVD., #105  
 BAKERSFIELD, CA 93313  
 TEL. (805)-832-9288  
 FAX. (805)-832-4291

REGISTRATION STAMP  
 OFFICE OF REGULATORY SERVICES  
 APPL. NO. 101484  
 FILE NO.  
 AC REC. FILE # 15-1777  
 DATE 1-13-1999

DANNY E. ORBIZ, A.I.A.  
 ARCHITECT C-14728

WILLIAM J. MELBY, A.I.A.  
 ARCHITECT C-161533

AS BUILT DRAWINGS  
 MODERNIZATION OF  
 COLLEGE HEIGHTS  
 ELEM. SCHOOL  
 FOR:

**BAKERSFIELD CITY SCHOOL DISTRICT**

2551 SUNNY LN.  
 BAKERSFIELD,  
 CALIFORNIA  
 93305

CHECK AND VERIFY ALL DIMENSIONS  
 BEFORE PROCEEDING WITH THE  
 WORK. REPORT DISCREPANCIES TO  
 THE ARCHITECT.

MARK	DATE	REVISION

SITE ELECTRICAL PLAN

110 NUMBER 97140  
 DATE 01-06-99  
 01-06-99  
 RTS

**E** REPORT 2.0