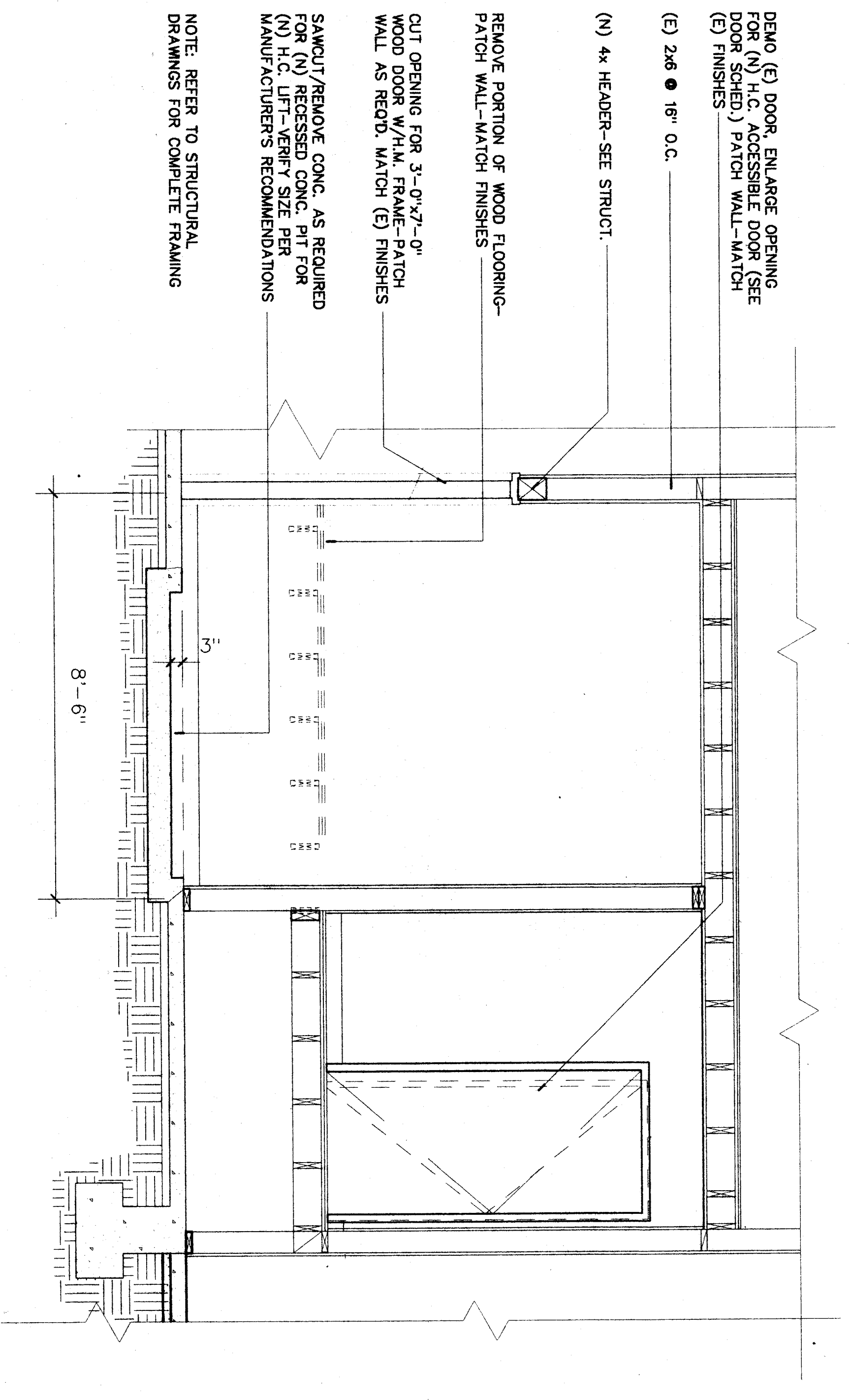
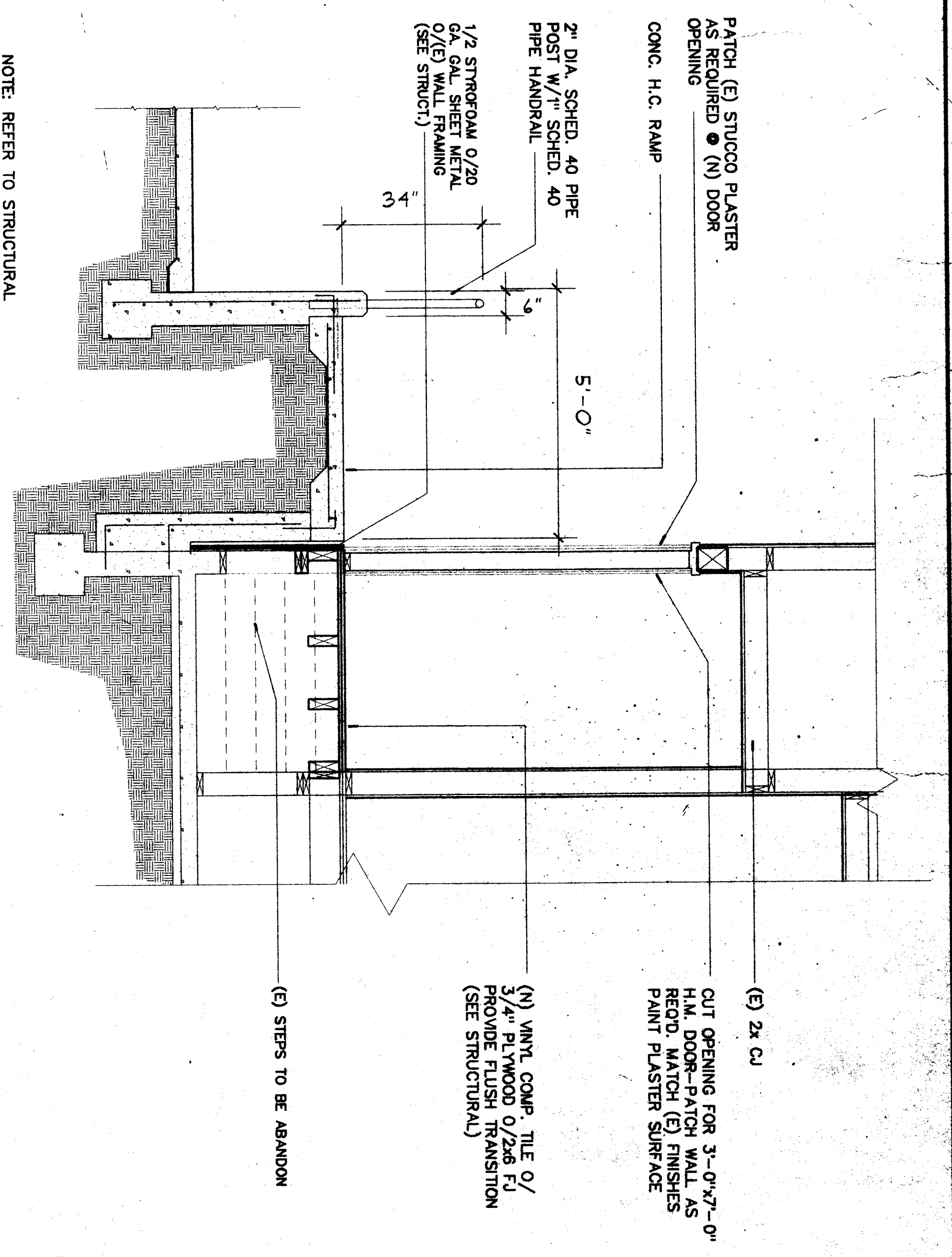


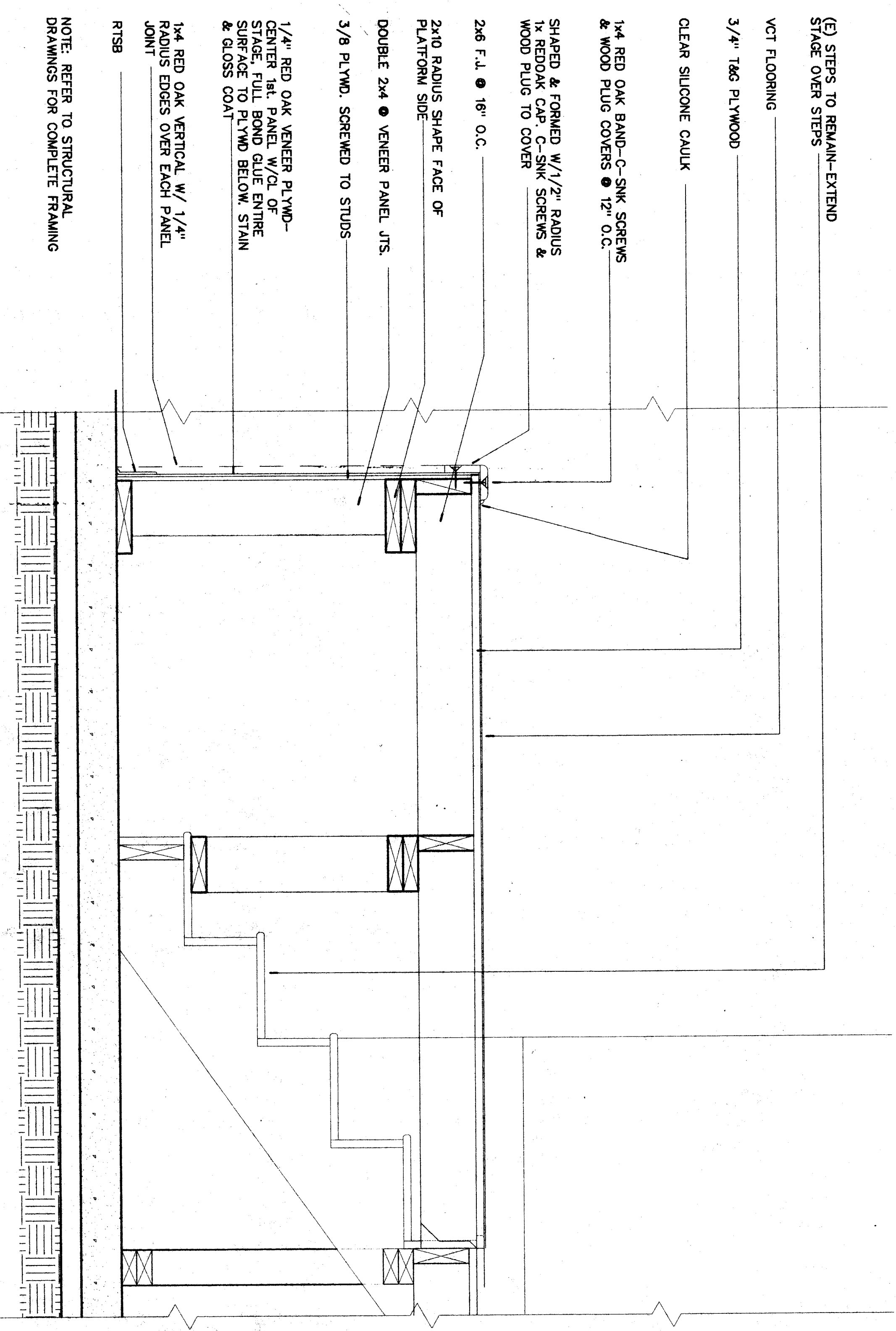
SECTION 1 - TYPICAL CLASSROOM 3/8"



SECTION 3 - H.C. LIFT AT STAGE 1/2"



SECTION 2 - EXTERIOR RAMP AT STAGE

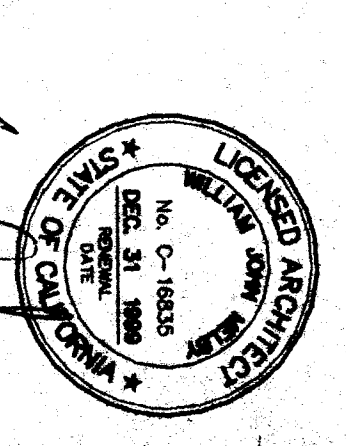


SECTION 4 - STAGE EXTENSION 1 1/2"

SECTIONS - UNITS 100, 200

1/4"

ORDIZ MELBY ARCHITECTS INC.
 5620 DISTRICT BLVD. #105
 BAKERSFIELD, CA. 93313
 TEL (805)-832-5258
 FAX (805)-832-4291



WILLIAM J. MELBY A.I.A. ARCHITECT
 C-16,636
 DANNY E. ORDIZ A.I.A. ARCHITECT
 C-14,728

REGISTRATION STAMP
 OFFICE OF REGULATION SERVICES
 APR. 101484
 AC. 101484
 DATE 1-15-1999

AS BUILT DRAWINGS
 MODERNIZATION OF
 COLLEGE HEIGHTS
 ELEM. SCHOOL
 FOR:

BAKERSFIELD CITY SCHOOL DISTRICT

2551 SUNNY LN.
 BAKERSFIELD,
 CALIFORNIA
 93305

CHECK AND VERIFY ALL DIMENSIONS
 BEFORE PROCEEDING WITH THE
 WORK REPORT DISCREPANCIES TO
 THE ARCHITECT

MARK	DATE	REVISION

JOB NUMBER 97140
 DATE 1/6/99
 SHEETS 7.1
 OF 20