

KEY NOTES
THIS SHEET ONLY

- (E)P-5T1 EXISTING STUDIO BLASTER FINISH TO REMAIN-PATCH
- (E)P-5T2 EXISTING STUDIO BLASTER FINISH TO REMAIN-PATCH
- (E)P-5T3 EXISTING STUDIO BLASTER FINISH TO REMAIN-PATCH
- (E)P-5T4 EXISTING STUDIO BLASTER FINISH TO REMAIN-PATCH
- (E)P-5T5 EXISTING STUDIO BLASTER FINISH TO REMAIN-PATCH
- (E)P-5T6 EXISTING STUDIO BLASTER FINISH TO REMAIN-PATCH
- (E)P-5T7 EXISTING STUDIO BLASTER FINISH TO REMAIN-PATCH
- (E)P-5T8 EXISTING STUDIO BLASTER FINISH TO REMAIN-PATCH
- (E)P-5T9 EXISTING STUDIO BLASTER FINISH TO REMAIN-PATCH
- (E)P-5T10 EXISTING STUDIO BLASTER FINISH TO REMAIN-PATCH
- (E)P-5T11 EXISTING STUDIO BLASTER FINISH TO REMAIN-PATCH
- (E)P-5T12 EXISTING STUDIO BLASTER FINISH TO REMAIN-PATCH
- (E)P-5T13 EXISTING STUDIO BLASTER FINISH TO REMAIN-PATCH
- (E)P-5T14 EXISTING STUDIO BLASTER FINISH TO REMAIN-PATCH
- (E)P-5T15 EXISTING STUDIO BLASTER FINISH TO REMAIN-PATCH
- (E)P-5T16 EXISTING STUDIO BLASTER FINISH TO REMAIN-PATCH
- (E)P-5T17 EXISTING STUDIO BLASTER FINISH TO REMAIN-PATCH
- (E)P-5T18 EXISTING STUDIO BLASTER FINISH TO REMAIN-PATCH
- (E)P-5T19 EXISTING STUDIO BLASTER FINISH TO REMAIN-PATCH
- (E)P-5T20 EXISTING STUDIO BLASTER FINISH TO REMAIN-PATCH
- (E)P-5T21 EXISTING STUDIO BLASTER FINISH TO REMAIN-PATCH
- (E)P-5T22 EXISTING STUDIO BLASTER FINISH TO REMAIN-PATCH
- (E)P-5T23 EXISTING STUDIO BLASTER FINISH TO REMAIN-PATCH
- (E)P-5T24 EXISTING STUDIO BLASTER FINISH TO REMAIN-PATCH
- (E)P-5T25 EXISTING STUDIO BLASTER FINISH TO REMAIN-PATCH
- (E)P-5T26 EXISTING STUDIO BLASTER FINISH TO REMAIN-PATCH
- (E)P-5T27 EXISTING STUDIO BLASTER FINISH TO REMAIN-PATCH
- (E)P-5T28 EXISTING STUDIO BLASTER FINISH TO REMAIN-PATCH
- (E)P-5T29 EXISTING STUDIO BLASTER FINISH TO REMAIN-PATCH
- (E)P-5T30 EXISTING STUDIO BLASTER FINISH TO REMAIN-PATCH
- (E)P-5T31 EXISTING STUDIO BLASTER FINISH TO REMAIN-PATCH
- (E)P-5T32 EXISTING STUDIO BLASTER FINISH TO REMAIN-PATCH
- (E)P-5T33 EXISTING STUDIO BLASTER FINISH TO REMAIN-PATCH
- (E)P-5T34 EXISTING STUDIO BLASTER FINISH TO REMAIN-PATCH
- (E)P-5T35 EXISTING STUDIO BLASTER FINISH TO REMAIN-PATCH
- (E)P-5T36 EXISTING STUDIO BLASTER FINISH TO REMAIN-PATCH
- (E)P-5T37 EXISTING STUDIO BLASTER FINISH TO REMAIN-PATCH
- (E)P-5T38 EXISTING STUDIO BLASTER FINISH TO REMAIN-PATCH
- (E)P-5T39 EXISTING STUDIO BLASTER FINISH TO REMAIN-PATCH
- (E)P-5T40 EXISTING STUDIO BLASTER FINISH TO REMAIN-PATCH
- (E)P-5T41 EXISTING STUDIO BLASTER FINISH TO REMAIN-PATCH
- (E)P-5T42 EXISTING STUDIO BLASTER FINISH TO REMAIN-PATCH
- (E)P-5T43 EXISTING STUDIO BLASTER FINISH TO REMAIN-PATCH
- (E)P-5T44 EXISTING STUDIO BLASTER FINISH TO REMAIN-PATCH
- (E)P-5T45 EXISTING STUDIO BLASTER FINISH TO REMAIN-PATCH
- (E)P-5T46 EXISTING STUDIO BLASTER FINISH TO REMAIN-PATCH
- (E)P-5T47 EXISTING STUDIO BLASTER FINISH TO REMAIN-PATCH
- (E)P-5T48 EXISTING STUDIO BLASTER FINISH TO REMAIN-PATCH
- (E)P-5T49 EXISTING STUDIO BLASTER FINISH TO REMAIN-PATCH
- (E)P-5T50 EXISTING STUDIO BLASTER FINISH TO REMAIN-PATCH
- (E)P-5T51 EXISTING STUDIO BLASTER FINISH TO REMAIN-PATCH
- (E)P-5T52 EXISTING STUDIO BLASTER FINISH TO REMAIN-PATCH
- (E)P-5T53 EXISTING STUDIO BLASTER FINISH TO REMAIN-PATCH
- (E)P-5T54 EXISTING STUDIO BLASTER FINISH TO REMAIN-PATCH
- (E)P-5T55 EXISTING STUDIO BLASTER FINISH TO REMAIN-PATCH
- (E)P-5T56 EXISTING STUDIO BLASTER FINISH TO REMAIN-PATCH
- (E)P-5T57 EXISTING STUDIO BLASTER FINISH TO REMAIN-PATCH
- (E)P-5T58 EXISTING STUDIO BLASTER FINISH TO REMAIN-PATCH
- (E)P-5T59 EXISTING STUDIO BLASTER FINISH TO REMAIN-PATCH
- (E)P-5T60 EXISTING STUDIO BLASTER FINISH TO REMAIN-PATCH
- (E)P-5T61 EXISTING STUDIO BLASTER FINISH TO REMAIN-PATCH
- (E)P-5T62 EXISTING STUDIO BLASTER FINISH TO REMAIN-PATCH
- (E)P-5T63 EXISTING STUDIO BLASTER FINISH TO REMAIN-PATCH
- (E)P-5T64 EXISTING STUDIO BLASTER FINISH TO REMAIN-PATCH
- (E)P-5T65 EXISTING STUDIO BLASTER FINISH TO REMAIN-PATCH
- (E)P-5T66 EXISTING STUDIO BLASTER FINISH TO REMAIN-PATCH
- (E)P-5T67 EXISTING STUDIO BLASTER FINISH TO REMAIN-PATCH
- (E)P-5T68 EXISTING STUDIO BLASTER FINISH TO REMAIN-PATCH
- (E)P-5T69 EXISTING STUDIO BLASTER FINISH TO REMAIN-PATCH
- (E)P-5T70 EXISTING STUDIO BLASTER FINISH TO REMAIN-PATCH
- (E)P-5T71 EXISTING STUDIO BLASTER FINISH TO REMAIN-PATCH
- (E)P-5T72 EXISTING STUDIO BLASTER FINISH TO REMAIN-PATCH
- (E)P-5T73 EXISTING STUDIO BLASTER FINISH TO REMAIN-PATCH
- (E)P-5T74 EXISTING STUDIO BLASTER FINISH TO REMAIN-PATCH
- (E)P-5T75 EXISTING STUDIO BLASTER FINISH TO REMAIN-PATCH
- (E)P-5T76 EXISTING STUDIO BLASTER FINISH TO REMAIN-PATCH
- (E)P-5T77 EXISTING STUDIO BLASTER FINISH TO REMAIN-PATCH
- (E)P-5T78 EXISTING STUDIO BLASTER FINISH TO REMAIN-PATCH
- (E)P-5T79 EXISTING STUDIO BLASTER FINISH TO REMAIN-PATCH
- (E)P-5T80 EXISTING STUDIO BLASTER FINISH TO REMAIN-PATCH
- (E)P-5T81 EXISTING STUDIO BLASTER FINISH TO REMAIN-PATCH
- (E)P-5T82 EXISTING STUDIO BLASTER FINISH TO REMAIN-PATCH
- (E)P-5T83 EXISTING STUDIO BLASTER FINISH TO REMAIN-PATCH
- (E)P-5T84 EXISTING STUDIO BLASTER FINISH TO REMAIN-PATCH
- (E)P-5T85 EXISTING STUDIO BLASTER FINISH TO REMAIN-PATCH
- (E)P-5T86 EXISTING STUDIO BLASTER FINISH TO REMAIN-PATCH
- (E)P-5T87 EXISTING STUDIO BLASTER FINISH TO REMAIN-PATCH
- (E)P-5T88 EXISTING STUDIO BLASTER FINISH TO REMAIN-PATCH
- (E)P-5T89 EXISTING STUDIO BLASTER FINISH TO REMAIN-PATCH
- (E)P-5T90 EXISTING STUDIO BLASTER FINISH TO REMAIN-PATCH
- (E)P-5T91 EXISTING STUDIO BLASTER FINISH TO REMAIN-PATCH
- (E)P-5T92 EXISTING STUDIO BLASTER FINISH TO REMAIN-PATCH
- (E)P-5T93 EXISTING STUDIO BLASTER FINISH TO REMAIN-PATCH
- (E)P-5T94 EXISTING STUDIO BLASTER FINISH TO REMAIN-PATCH
- (E)P-5T95 EXISTING STUDIO BLASTER FINISH TO REMAIN-PATCH
- (E)P-5T96 EXISTING STUDIO BLASTER FINISH TO REMAIN-PATCH
- (E)P-5T97 EXISTING STUDIO BLASTER FINISH TO REMAIN-PATCH
- (E)P-5T98 EXISTING STUDIO BLASTER FINISH TO REMAIN-PATCH
- (E)P-5T99 EXISTING STUDIO BLASTER FINISH TO REMAIN-PATCH
- (E)P-5T100 EXISTING STUDIO BLASTER FINISH TO REMAIN-PATCH

ORDIZ MELBY
ARCHITECTS INC.
5620 DISTRICT BLVD. #106
BAKERSFIELD, CA 93318
TEL (805)-832-5586
FAX (805)-832-4391

REGISTERED ARCHITECT
No. 5-1003
Exp. 31 2005
STATE OF CALIFORNIA
DANNY E. ORTIZ
C-14,728
A.I.A.
WILLIAM J. MELBY
C-16,938
A.I.A.
ARCHITECT

REGISTRATION STATE
DIV. OF STATE ARCHITECT
OFFICE OF REGULATION SERVICES
APPL. 101484
A.C. FILE # 101484
DATE 1-15-7779

AS BUILT DRAWINGS
MODERNIZATION OF
COLLEGE HEIGHTS
ELEM. SCHOOL
FOR:

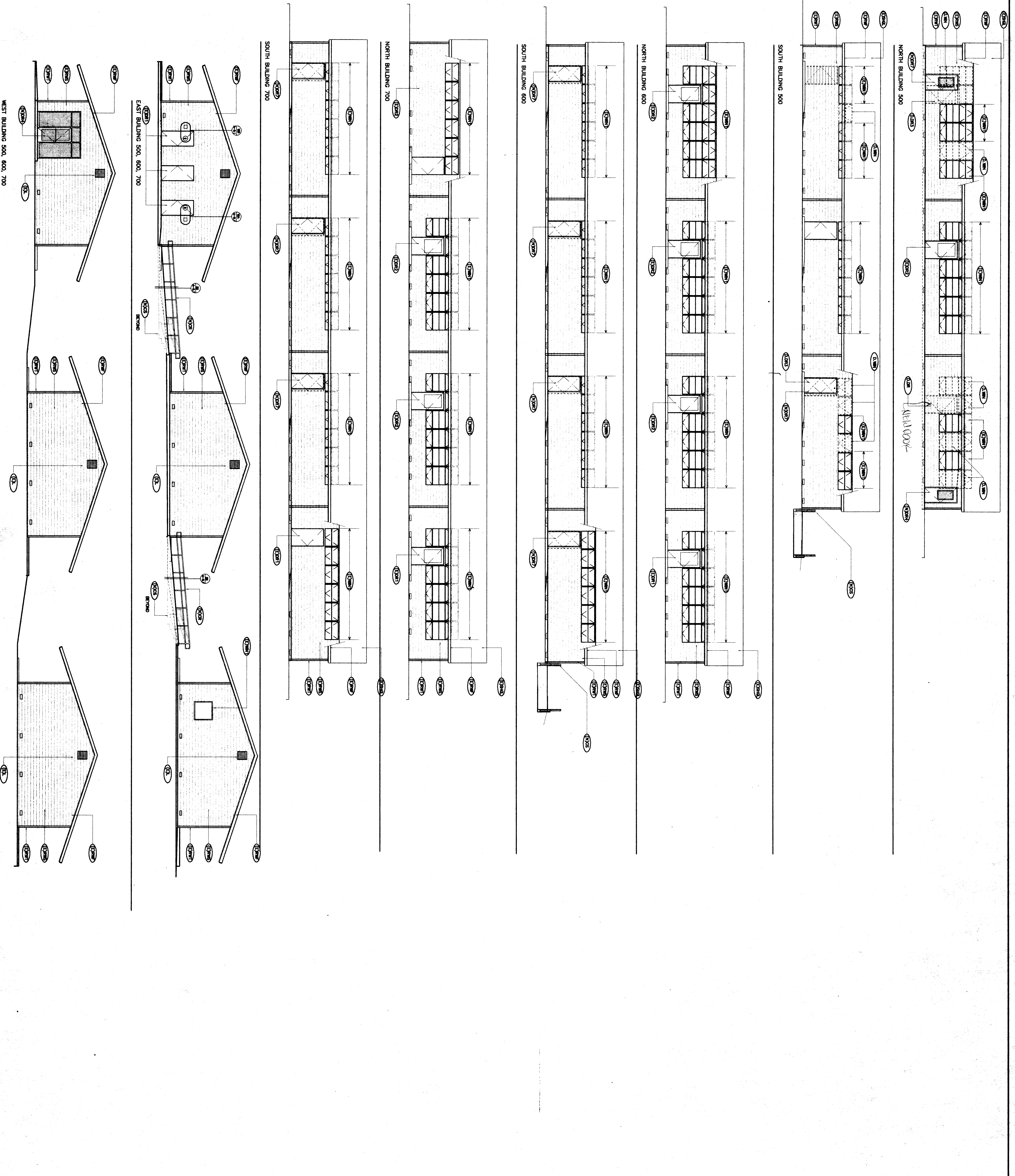
**BAKERSFIELD
CITY
SCHOOL
DISTRICT**
2551 SUNNY LN.
BAKERSFIELD,
CALIFORNIA
93305

CHECK AND VERIFY ALL DIMENSIONS
BEFORE PROCEEDING WITH THE
WORK. REPORT DISCREPANCIES TO
THE ARCHITECT.

MARK DATE REVISION

EXTERIOR ELEV.
UNITS. 500, 600
700

JOB NUMBER 97140
DATE 1/5/99
DRAWN BY MKB
SHEET 6.2
OF 20



EXTERIOR ELEVATIONS - UNITS 500 & 600 & 700