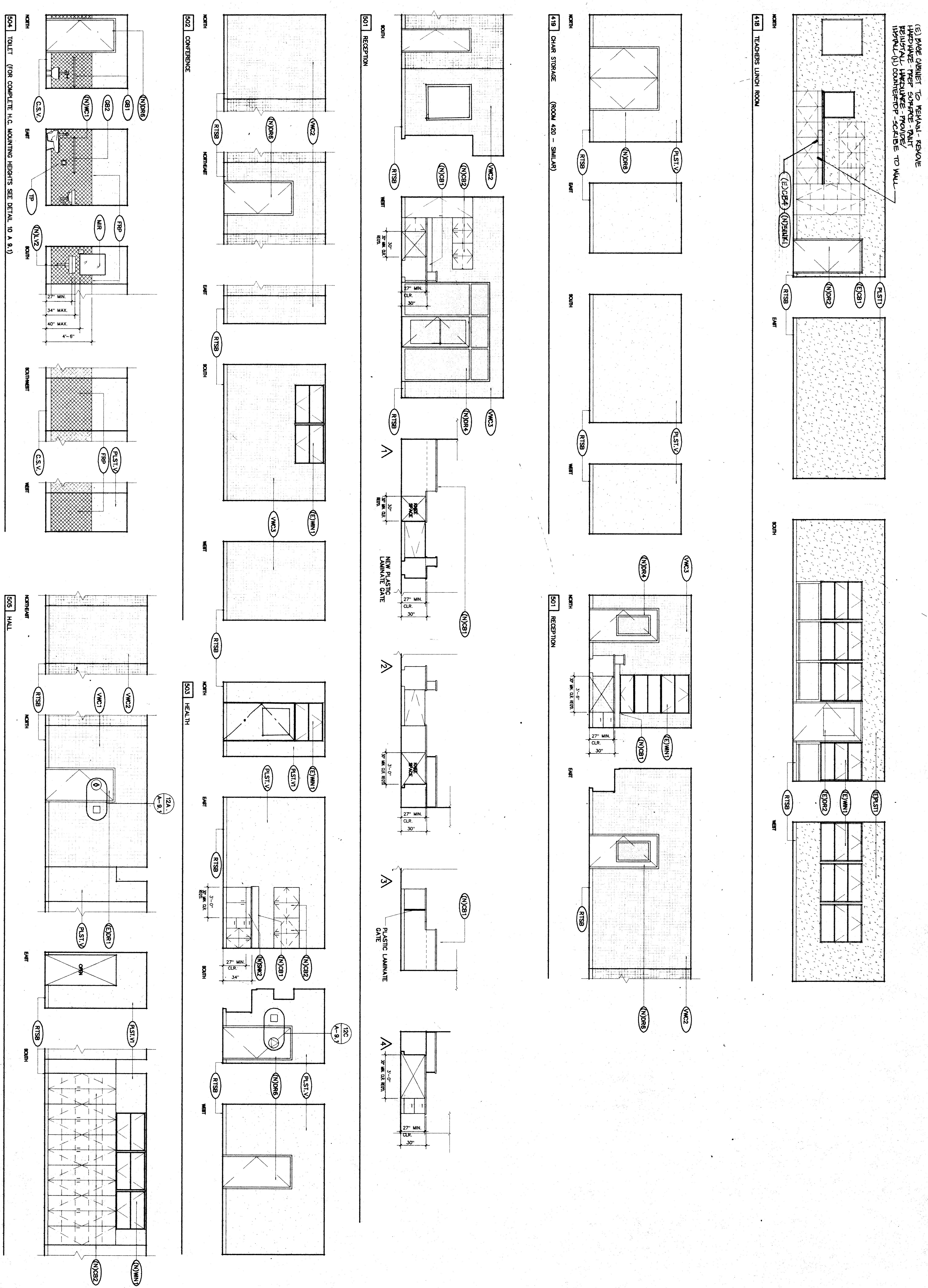
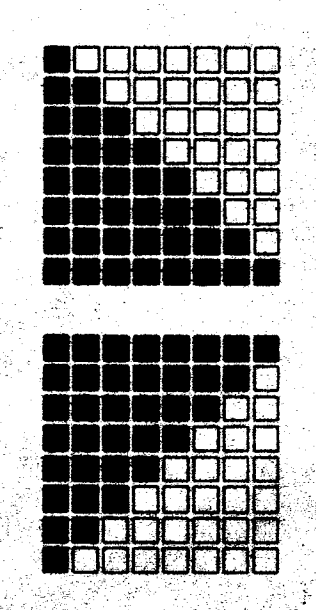


**KEY NOTES**  
THIS SHEET ONLY

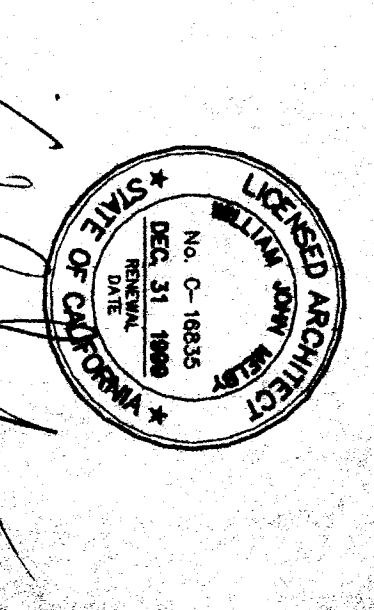
- (N)W1 NEW 2x wall-see legend & finish
- (N)W2 REMOVE EXISTING (DASHED) WALLS AS SHOWN, PATCH WALL/DOORS AS REQUIRED.
- (N)W3 REPAIR DOOR & FRAME-SEE DETAIL (N)W3A
- (N)W4 EXISTING CABINETS TO REMAIN-REMOVE HARDWARE-REPAIR SURFACE-PATCH COUNTERTOPS TO REMAIN.
- (N)W5 NEW LAMINATE PLASTIC BASE CABINET-NEW LAMINATE PLASTIC COUNTER-SEE PLAN(S) FOR FINISHES.
- (N)W6 1/2" VNTL COVERED TACKABLE MOLD TRIM OVER EXISTING PLYWOOD.
- (N)W7 1/2" VNTL COVERED TACKABLE MOLD TRIM OVER NEW 1/2" GYP BOARD.
- (N)W8 1/2" VNTL COVERED TACKABLE MOLD TRIM WITH 1/4" WOOD TRIM OVER EXISTING.
- (N)W9 PLASTER WALL COVERING OVER NEW 1/2" GYP BOARD.
- (N)W10 PLASTER WALL COVERING OVER EXISTING PLASTER TO REMAIN-PRP & PAINT.
- (N)W11 PATON PLASTER & DEMO FLOOR-EXTEND EXISTING PLYWOOD TO REMAIN-PRP & PAINT.
- (N)W12 1/2" GYP BOARD WITH 1/8" VENER PLASTER-PATCH WITH 1/4" VENER PLASTER-PRP & PAINT.
- (N)W13 INTERIOR CORNER BASEBOARD PANEL WANSKOT WITH METAL-TIM LINT IN EXISTING OPENING-SEE WINDOW SCHEDULE.
- (N)W14 EXISTING DOOR & FRAME TO REMAIN-PRP & PAINT.
- (N)W15 PLASTER-PRP & PAINT TO REMAIN-REMOVE EXISTING HARDWARE-PRP & PAINT.
- (N)W16 NEW H.C. ACCESSIBLE FRAME PROVIDE/INSTALL H.C. ACCESSIBLE HARDWARE.
- (N)W17 NEW DOOR & FRAME-NEW OPENING, ACCESSIBLE HARDWARE.
- (N)W18 OPENING PROVIDE/INSTALL H.C. ACCESSIBLE HARDWARE.
- (N)W19 NEW DOOR & FRAME-NEW OPENING, ACCESSIBLE HARDWARE.
- (N)W20 OPENING PROVIDE/INSTALL H.C. ACCESSIBLE HARDWARE.
- (N)W21 PATON PLASTER & DEMO FLOOR-EXTEND EXISTING PLYWOOD TO REMAIN-PRP & PAINT.
- (N)W22 1/2" GYP BOARD WITH 1/8" VENER PLASTER-PATCH WITH 1/4" VENER PLASTER-PRP & PAINT.
- (N)W23 INTERIOR CORNER BASEBOARD PANEL WANSKOT WITH METAL-TIM LINT IN EXISTING OPENING-SEE WINDOW SCHEDULE.
- (N)W24 EXISTING DOOR & FRAME TO REMAIN-PRP & PAINT.
- (N)W25 PLASTER-PRP & PAINT TO REMAIN-REMOVE EXISTING HARDWARE-PRP & PAINT.
- (N)W26 NEW H.C. ACCESSIBLE FRAME PROVIDE/INSTALL H.C. ACCESSIBLE HARDWARE.
- (N)W27 NEW DOOR & FRAME-NEW OPENING, ACCESSIBLE HARDWARE.
- (N)W28 OPENING PROVIDE/INSTALL H.C. ACCESSIBLE HARDWARE.
- (N)W29 NEW DOOR & FRAME-NEW OPENING, ACCESSIBLE HARDWARE.
- (N)W30 OPENING PROVIDE/INSTALL H.C. ACCESSIBLE HARDWARE.
- (N)W31 PATON PLASTER & DEMO FLOOR-EXTEND EXISTING PLYWOOD TO REMAIN-PRP & PAINT.
- (N)W32 1/2" GYP BOARD WITH 1/8" VENER PLASTER-PATCH WITH 1/4" VENER PLASTER-PRP & PAINT.
- (N)W33 INTERIOR CORNER BASEBOARD PANEL WANSKOT WITH METAL-TIM LINT IN EXISTING OPENING-SEE WINDOW SCHEDULE.
- (N)W34 EXISTING DOOR & FRAME TO REMAIN-PRP & PAINT.
- (N)W35 PLASTER-PRP & PAINT TO REMAIN-REMOVE EXISTING HARDWARE-PRP & PAINT.
- (N)W36 NEW H.C. ACCESSIBLE FRAME PROVIDE/INSTALL H.C. ACCESSIBLE HARDWARE.
- (N)W37 NEW DOOR & FRAME-NEW OPENING, ACCESSIBLE HARDWARE.
- (N)W38 OPENING PROVIDE/INSTALL H.C. ACCESSIBLE HARDWARE.
- (N)W39 NEW DOOR & FRAME-NEW OPENING, ACCESSIBLE HARDWARE.
- (N)W40 OPENING PROVIDE/INSTALL H.C. ACCESSIBLE HARDWARE.
- (N)W41 PATON PLASTER & DEMO FLOOR-EXTEND EXISTING PLYWOOD TO REMAIN-PRP & PAINT.
- (N)W42 1/2" GYP BOARD WITH 1/8" VENER PLASTER-PATCH WITH 1/4" VENER PLASTER-PRP & PAINT.
- (N)W43 INTERIOR CORNER BASEBOARD PANEL WANSKOT WITH METAL-TIM LINT IN EXISTING OPENING-SEE WINDOW SCHEDULE.
- (N)W44 EXISTING DOOR & FRAME TO REMAIN-PRP & PAINT.
- (N)W45 PLASTER-PRP & PAINT TO REMAIN-REMOVE EXISTING HARDWARE-PRP & PAINT.
- (N)W46 NEW H.C. ACCESSIBLE FRAME PROVIDE/INSTALL H.C. ACCESSIBLE HARDWARE.
- (N)W47 NEW DOOR & FRAME-NEW OPENING, ACCESSIBLE HARDWARE.
- (N)W48 OPENING PROVIDE/INSTALL H.C. ACCESSIBLE HARDWARE.
- (N)W49 NEW DOOR & FRAME-NEW OPENING, ACCESSIBLE HARDWARE.
- (N)W50 OPENING PROVIDE/INSTALL H.C. ACCESSIBLE HARDWARE.
- (N)W51 PATON PLASTER & DEMO FLOOR-EXTEND EXISTING PLYWOOD TO REMAIN-PRP & PAINT.
- (N)W52 1/2" GYP BOARD WITH 1/8" VENER PLASTER-PATCH WITH 1/4" VENER PLASTER-PRP & PAINT.
- (N)W53 INTERIOR CORNER BASEBOARD PANEL WANSKOT WITH METAL-TIM LINT IN EXISTING OPENING-SEE WINDOW SCHEDULE.
- (N)W54 EXISTING DOOR & FRAME TO REMAIN-PRP & PAINT.
- (N)W55 PLASTER-PRP & PAINT TO REMAIN-REMOVE EXISTING HARDWARE-PRP & PAINT.
- (N)W56 NEW H.C. ACCESSIBLE FRAME PROVIDE/INSTALL H.C. ACCESSIBLE HARDWARE.
- (N)W57 NEW DOOR & FRAME-NEW OPENING, ACCESSIBLE HARDWARE.
- (N)W58 OPENING PROVIDE/INSTALL H.C. ACCESSIBLE HARDWARE.
- (N)W59 NEW DOOR & FRAME-NEW OPENING, ACCESSIBLE HARDWARE.
- (N)W60 OPENING PROVIDE/INSTALL H.C. ACCESSIBLE HARDWARE.
- (N)W61 PATON PLASTER & DEMO FLOOR-EXTEND EXISTING PLYWOOD TO REMAIN-PRP & PAINT.
- (N)W62 1/2" GYP BOARD WITH 1/8" VENER PLASTER-PATCH WITH 1/4" VENER PLASTER-PRP & PAINT.
- (N)W63 INTERIOR CORNER BASEBOARD PANEL WANSKOT WITH METAL-TIM LINT IN EXISTING OPENING-SEE WINDOW SCHEDULE.
- (N)W64 EXISTING DOOR & FRAME TO REMAIN-PRP & PAINT.
- (N)W65 PLASTER-PRP & PAINT TO REMAIN-REMOVE EXISTING HARDWARE-PRP & PAINT.
- (N)W66 NEW H.C. ACCESSIBLE FRAME PROVIDE/INSTALL H.C. ACCESSIBLE HARDWARE.
- (N)W67 NEW DOOR & FRAME-NEW OPENING, ACCESSIBLE HARDWARE.
- (N)W68 OPENING PROVIDE/INSTALL H.C. ACCESSIBLE HARDWARE.
- (N)W69 NEW DOOR & FRAME-NEW OPENING, ACCESSIBLE HARDWARE.
- (N)W70 OPENING PROVIDE/INSTALL H.C. ACCESSIBLE HARDWARE.
- (N)W71 PATON PLASTER & DEMO FLOOR-EXTEND EXISTING PLYWOOD TO REMAIN-PRP & PAINT.
- (N)W72 1/2" GYP BOARD WITH 1/8" VENER PLASTER-PATCH WITH 1/4" VENER PLASTER-PRP & PAINT.
- (N)W73 INTERIOR CORNER BASEBOARD PANEL WANSKOT WITH METAL-TIM LINT IN EXISTING OPENING-SEE WINDOW SCHEDULE.
- (N)W74 EXISTING DOOR & FRAME TO REMAIN-PRP & PAINT.
- (N)W75 PLASTER-PRP & PAINT TO REMAIN-REMOVE EXISTING HARDWARE-PRP & PAINT.
- (N)W76 NEW H.C. ACCESSIBLE FRAME PROVIDE/INSTALL H.C. ACCESSIBLE HARDWARE.
- (N)W77 NEW DOOR & FRAME-NEW OPENING, ACCESSIBLE HARDWARE.
- (N)W78 OPENING PROVIDE/INSTALL H.C. ACCESSIBLE HARDWARE.
- (N)W79 NEW DOOR & FRAME-NEW OPENING, ACCESSIBLE HARDWARE.
- (N)W80 OPENING PROVIDE/INSTALL H.C. ACCESSIBLE HARDWARE.
- (N)W81 PATON PLASTER & DEMO FLOOR-EXTEND EXISTING PLYWOOD TO REMAIN-PRP & PAINT.
- (N)W82 1/2" GYP BOARD WITH 1/8" VENER PLASTER-PATCH WITH 1/4" VENER PLASTER-PRP & PAINT.
- (N)W83 INTERIOR CORNER BASEBOARD PANEL WANSKOT WITH METAL-TIM LINT IN EXISTING OPENING-SEE WINDOW SCHEDULE.
- (N)W84 EXISTING DOOR & FRAME TO REMAIN-PRP & PAINT.
- (N)W85 PLASTER-PRP & PAINT TO REMAIN-REMOVE EXISTING HARDWARE-PRP & PAINT.
- (N)W86 NEW H.C. ACCESSIBLE FRAME PROVIDE/INSTALL H.C. ACCESSIBLE HARDWARE.
- (N)W87 NEW DOOR & FRAME-NEW OPENING, ACCESSIBLE HARDWARE.
- (N)W88 OPENING PROVIDE/INSTALL H.C. ACCESSIBLE HARDWARE.
- (N)W89 NEW DOOR & FRAME-NEW OPENING, ACCESSIBLE HARDWARE.
- (N)W90 OPENING PROVIDE/INSTALL H.C. ACCESSIBLE HARDWARE.
- (N)W91 PATON PLASTER & DEMO FLOOR-EXTEND EXISTING PLYWOOD TO REMAIN-PRP & PAINT.
- (N)W92 1/2" GYP BOARD WITH 1/8" VENER PLASTER-PATCH WITH 1/4" VENER PLASTER-PRP & PAINT.
- (N)W93 INTERIOR CORNER BASEBOARD PANEL WANSKOT WITH METAL-TIM LINT IN EXISTING OPENING-SEE WINDOW SCHEDULE.
- (N)W94 EXISTING DOOR & FRAME TO REMAIN-PRP & PAINT.
- (N)W95 PLASTER-PRP & PAINT TO REMAIN-REMOVE EXISTING HARDWARE-PRP & PAINT.
- (N)W96 NEW H.C. ACCESSIBLE FRAME PROVIDE/INSTALL H.C. ACCESSIBLE HARDWARE.
- (N)W97 NEW DOOR & FRAME-NEW OPENING, ACCESSIBLE HARDWARE.
- (N)W98 OPENING PROVIDE/INSTALL H.C. ACCESSIBLE HARDWARE.
- (N)W99 NEW DOOR & FRAME-NEW OPENING, ACCESSIBLE HARDWARE.
- (N)W100 OPENING PROVIDE/INSTALL H.C. ACCESSIBLE HARDWARE.



**INTERIOR ELEVATIONS - UNIT 400, 500**



ORDIZ  
MELBY  
ARCHITECTS INC.  
5620 DISTRICT BLVD. #105  
BAKERSFIELD, CA 93313  
TEL (805)-832-5558  
FAX (805)-832-4891



WILLIAM J. MELBY A.I.A.  
ARCHITECT  
C-16536

REGISTRATION STATE  
DIV. OF STATE ARCHITECT  
OFFICE OF REGULATORY SERVICES  
APPL. 101484  
DATE 1-15-1977

AS BUILT DRAWINGS  
MODERNIZATION OF  
COLLEGE HEIGHTS  
ELEM. SCHOOL  
FOR:

**BAKERSFIELD  
CITY  
SCHOOL  
DISTRICT**

2551 SUNNY LN.  
BAKERSFIELD,  
CALIFORNIA  
93305

CHECK AND VERIFY ALL DIMENSIONS  
BEFORE PROCEEDING WITH THE  
WORK. REPORT DISCREPANCIES TO  
THE ARCHITECT.

MARK DATE REVISION

INTERIOR ELEV.  
UNIT. 400, 500

JOB NUMBERS  
97140  
DATE 09  
DRAWN BY  
M.K.B.  
5.4  
SHEET  
OF 20