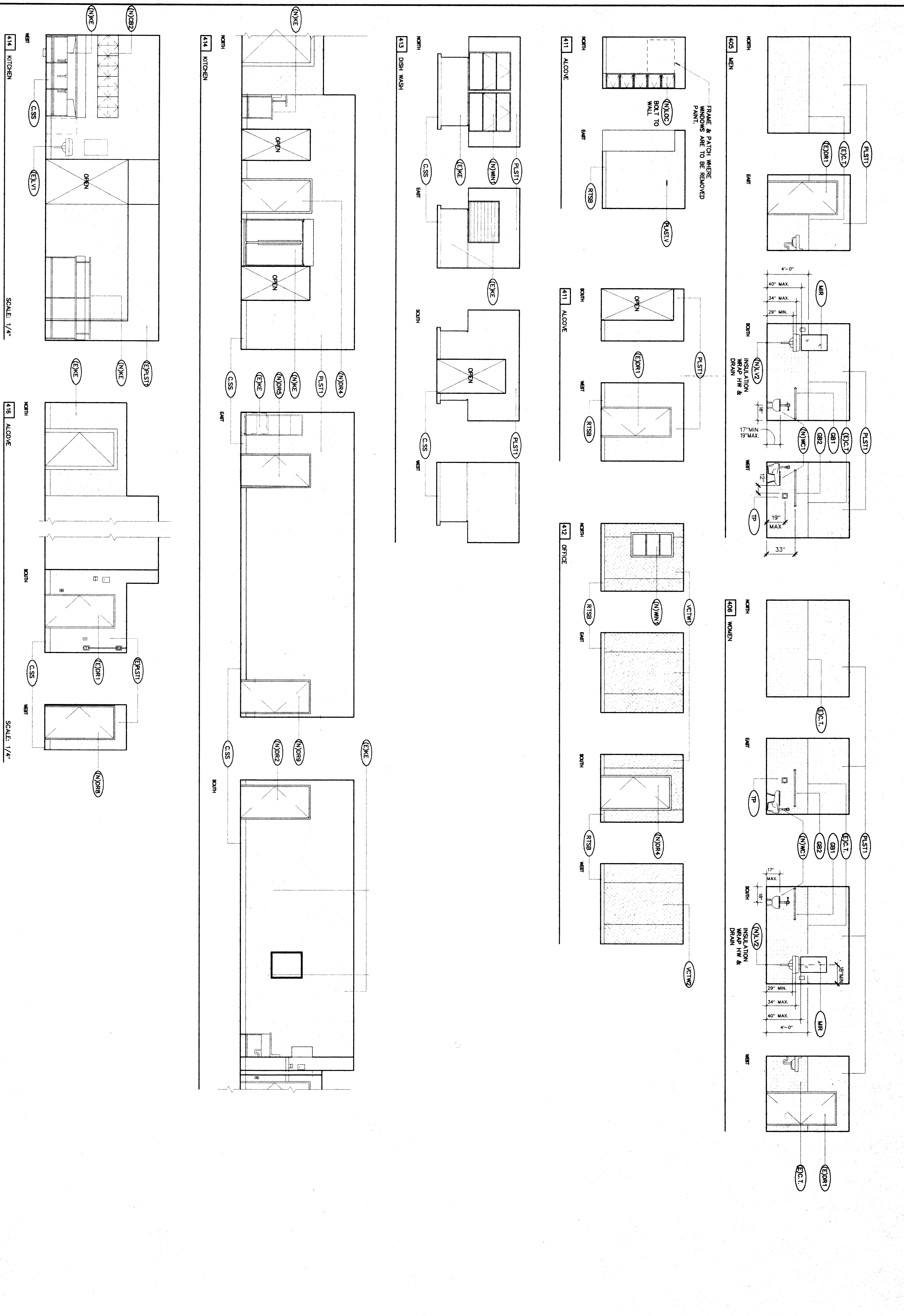


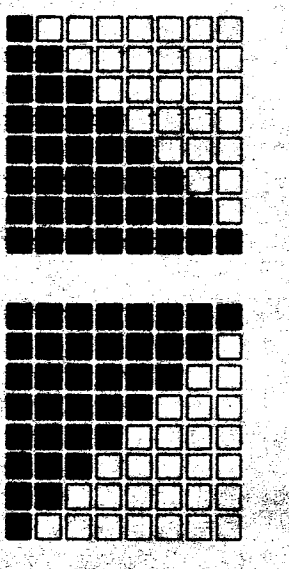
**KEY NOTES**  
THIS SHEET ONLY

- (N)W1 NEW 2" WALL SEE FLOOR PLAN & FINISH SCHEDULE
- (N)R22 RUBBER TOP SET BASE SHEET WHNL
- (N)R23 FLOORING
- (N)R24 NEW LAMINATE PLASTIC CABINET-SEE CABINET SCHEDULE TAKEABLE
- (N)W11 CAMERON SCHEDULE TAKEABLE
- (N)W12 MOLD TRIM OVER EXISTING WALL FINISH, WALLBOARD WITH COLOR MATCHING J-MOLD TRIM OVER NEW 1/2" GYP BOARD
- (E)P1ST1 EXISTING PLASTER TO REMAIN-REPAIR & PATCH
- (E)P1ST2 PATCH PLASTER @ DEMO FLOOR-EXTEND TO LOWER LEVEL-PAATCH AS REQUIRED
- (E)P1ST3 1/2" GYP BOARD WITH 1/8" VENEER PLASTER-PATCH PLASTER OVER METAL LATH-REPAIR/REPLACE DAMAGED OR BROKEN PLASTER
- (E)C1 PATCH/REPLACE BROKEN OR DAMAGED TILE AS REQUIRED
- (E)W1 REPAIR/REPLACE BROKEN OR DAMAGED WINDOW
- (E)W2 EXISTING WINDOWS TO REMAIN-REPAIR & PATCH
- (N)W11 EXISTING WINDOWS TO REMAIN-REPAIR & PATCH
- (E)W1 EXISTING WINDOWS TO REMAIN-REPAIR & PATCH
- (E)W2 EXISTING WINDOWS TO REMAIN-REPAIR & PATCH
- (E)W3 EXISTING WINDOWS TO REMAIN-REPAIR & PATCH
- (E)W4 EXISTING WINDOWS TO REMAIN-REPAIR & PATCH
- (E)W5 EXISTING WINDOWS TO REMAIN-REPAIR & PATCH
- (E)W6 EXISTING WINDOWS TO REMAIN-REPAIR & PATCH
- (E)W7 EXISTING WINDOWS TO REMAIN-REPAIR & PATCH
- (E)W8 EXISTING WINDOWS TO REMAIN-REPAIR & PATCH
- (E)W9 EXISTING WINDOWS TO REMAIN-REPAIR & PATCH
- (E)W10 EXISTING WINDOWS TO REMAIN-REPAIR & PATCH
- (E)W11 EXISTING WINDOWS TO REMAIN-REPAIR & PATCH
- (E)W12 EXISTING WINDOWS TO REMAIN-REPAIR & PATCH
- (E)W13 EXISTING WINDOWS TO REMAIN-REPAIR & PATCH
- (E)W14 EXISTING WINDOWS TO REMAIN-REPAIR & PATCH
- (E)W15 EXISTING WINDOWS TO REMAIN-REPAIR & PATCH
- (E)W16 EXISTING WINDOWS TO REMAIN-REPAIR & PATCH
- (E)W17 EXISTING WINDOWS TO REMAIN-REPAIR & PATCH
- (E)W18 EXISTING WINDOWS TO REMAIN-REPAIR & PATCH
- (E)W19 EXISTING WINDOWS TO REMAIN-REPAIR & PATCH
- (E)W20 EXISTING WINDOWS TO REMAIN-REPAIR & PATCH
- (E)W21 EXISTING WINDOWS TO REMAIN-REPAIR & PATCH
- (E)W22 EXISTING WINDOWS TO REMAIN-REPAIR & PATCH
- (E)W23 EXISTING WINDOWS TO REMAIN-REPAIR & PATCH
- (E)W24 EXISTING WINDOWS TO REMAIN-REPAIR & PATCH
- (E)W25 EXISTING WINDOWS TO REMAIN-REPAIR & PATCH
- (E)W26 EXISTING WINDOWS TO REMAIN-REPAIR & PATCH
- (E)W27 EXISTING WINDOWS TO REMAIN-REPAIR & PATCH
- (E)W28 EXISTING WINDOWS TO REMAIN-REPAIR & PATCH
- (E)W29 EXISTING WINDOWS TO REMAIN-REPAIR & PATCH
- (E)W30 EXISTING WINDOWS TO REMAIN-REPAIR & PATCH
- (E)W31 EXISTING WINDOWS TO REMAIN-REPAIR & PATCH
- (E)W32 EXISTING WINDOWS TO REMAIN-REPAIR & PATCH
- (E)W33 EXISTING WINDOWS TO REMAIN-REPAIR & PATCH
- (E)W34 EXISTING WINDOWS TO REMAIN-REPAIR & PATCH
- (E)W35 EXISTING WINDOWS TO REMAIN-REPAIR & PATCH
- (E)W36 EXISTING WINDOWS TO REMAIN-REPAIR & PATCH
- (E)W37 EXISTING WINDOWS TO REMAIN-REPAIR & PATCH
- (E)W38 EXISTING WINDOWS TO REMAIN-REPAIR & PATCH
- (E)W39 EXISTING WINDOWS TO REMAIN-REPAIR & PATCH
- (E)W40 EXISTING WINDOWS TO REMAIN-REPAIR & PATCH
- (E)W41 EXISTING WINDOWS TO REMAIN-REPAIR & PATCH
- (E)W42 EXISTING WINDOWS TO REMAIN-REPAIR & PATCH
- (E)W43 EXISTING WINDOWS TO REMAIN-REPAIR & PATCH
- (E)W44 EXISTING WINDOWS TO REMAIN-REPAIR & PATCH
- (E)W45 EXISTING WINDOWS TO REMAIN-REPAIR & PATCH
- (E)W46 EXISTING WINDOWS TO REMAIN-REPAIR & PATCH
- (E)W47 EXISTING WINDOWS TO REMAIN-REPAIR & PATCH
- (E)W48 EXISTING WINDOWS TO REMAIN-REPAIR & PATCH
- (E)W49 EXISTING WINDOWS TO REMAIN-REPAIR & PATCH
- (E)W50 EXISTING WINDOWS TO REMAIN-REPAIR & PATCH
- (E)W51 EXISTING WINDOWS TO REMAIN-REPAIR & PATCH
- (E)W52 EXISTING WINDOWS TO REMAIN-REPAIR & PATCH
- (E)W53 EXISTING WINDOWS TO REMAIN-REPAIR & PATCH
- (E)W54 EXISTING WINDOWS TO REMAIN-REPAIR & PATCH
- (E)W55 EXISTING WINDOWS TO REMAIN-REPAIR & PATCH
- (E)W56 EXISTING WINDOWS TO REMAIN-REPAIR & PATCH
- (E)W57 EXISTING WINDOWS TO REMAIN-REPAIR & PATCH
- (E)W58 EXISTING WINDOWS TO REMAIN-REPAIR & PATCH
- (E)W59 EXISTING WINDOWS TO REMAIN-REPAIR & PATCH
- (E)W60 EXISTING WINDOWS TO REMAIN-REPAIR & PATCH
- (E)W61 EXISTING WINDOWS TO REMAIN-REPAIR & PATCH
- (E)W62 EXISTING WINDOWS TO REMAIN-REPAIR & PATCH
- (E)W63 EXISTING WINDOWS TO REMAIN-REPAIR & PATCH
- (E)W64 EXISTING WINDOWS TO REMAIN-REPAIR & PATCH
- (E)W65 EXISTING WINDOWS TO REMAIN-REPAIR & PATCH
- (E)W66 EXISTING WINDOWS TO REMAIN-REPAIR & PATCH
- (E)W67 EXISTING WINDOWS TO REMAIN-REPAIR & PATCH
- (E)W68 EXISTING WINDOWS TO REMAIN-REPAIR & PATCH
- (E)W69 EXISTING WINDOWS TO REMAIN-REPAIR & PATCH
- (E)W70 EXISTING WINDOWS TO REMAIN-REPAIR & PATCH
- (E)W71 EXISTING WINDOWS TO REMAIN-REPAIR & PATCH
- (E)W72 EXISTING WINDOWS TO REMAIN-REPAIR & PATCH
- (E)W73 EXISTING WINDOWS TO REMAIN-REPAIR & PATCH
- (E)W74 EXISTING WINDOWS TO REMAIN-REPAIR & PATCH
- (E)W75 EXISTING WINDOWS TO REMAIN-REPAIR & PATCH
- (E)W76 EXISTING WINDOWS TO REMAIN-REPAIR & PATCH
- (E)W77 EXISTING WINDOWS TO REMAIN-REPAIR & PATCH
- (E)W78 EXISTING WINDOWS TO REMAIN-REPAIR & PATCH
- (E)W79 EXISTING WINDOWS TO REMAIN-REPAIR & PATCH
- (E)W80 EXISTING WINDOWS TO REMAIN-REPAIR & PATCH
- (E)W81 EXISTING WINDOWS TO REMAIN-REPAIR & PATCH
- (E)W82 EXISTING WINDOWS TO REMAIN-REPAIR & PATCH
- (E)W83 EXISTING WINDOWS TO REMAIN-REPAIR & PATCH
- (E)W84 EXISTING WINDOWS TO REMAIN-REPAIR & PATCH
- (E)W85 EXISTING WINDOWS TO REMAIN-REPAIR & PATCH
- (E)W86 EXISTING WINDOWS TO REMAIN-REPAIR & PATCH
- (E)W87 EXISTING WINDOWS TO REMAIN-REPAIR & PATCH
- (E)W88 EXISTING WINDOWS TO REMAIN-REPAIR & PATCH
- (E)W89 EXISTING WINDOWS TO REMAIN-REPAIR & PATCH
- (E)W90 EXISTING WINDOWS TO REMAIN-REPAIR & PATCH
- (E)W91 EXISTING WINDOWS TO REMAIN-REPAIR & PATCH
- (E)W92 EXISTING WINDOWS TO REMAIN-REPAIR & PATCH
- (E)W93 EXISTING WINDOWS TO REMAIN-REPAIR & PATCH
- (E)W94 EXISTING WINDOWS TO REMAIN-REPAIR & PATCH
- (E)W95 EXISTING WINDOWS TO REMAIN-REPAIR & PATCH
- (E)W96 EXISTING WINDOWS TO REMAIN-REPAIR & PATCH
- (E)W97 EXISTING WINDOWS TO REMAIN-REPAIR & PATCH
- (E)W98 EXISTING WINDOWS TO REMAIN-REPAIR & PATCH
- (E)W99 EXISTING WINDOWS TO REMAIN-REPAIR & PATCH
- (E)W100 EXISTING WINDOWS TO REMAIN-REPAIR & PATCH

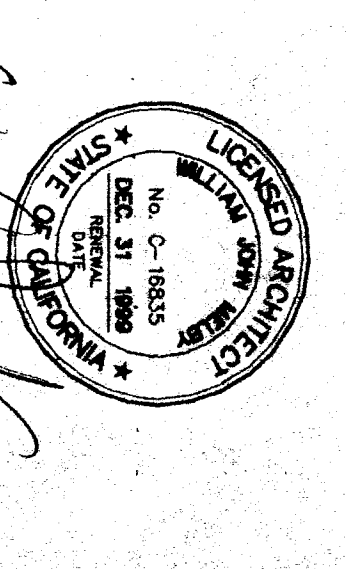


**INTERIOR ELEVATIONS - UNIT 400**

1/4"



**ORDIZ MELBY ARCHITECTS INC.**  
5820 DISTRICT BLVD. #105  
BAKERSFIELD, CA 93313  
TEL (805) 832-5258  
FAX (805) 832-4281



**WILLIAM J. MELBY AIA ARCHITECT**  
C-161835

IDENTIFICATION STAMP  
OFFICE OF REGULATORY SERVICES  
APPL. 101484  
AC 7/1 FL 5/18 SS MC  
DATE 1-15-1999

AS BUILT DRAWINGS  
MODERNIZATION OF COLLEGE HEIGHTS ELEM. SCHOOL FOR

**BAKERSFIELD CITY SCHOOL DISTRICT**

2551 SUNNY LN.  
BAKERSFIELD, CALIFORNIA  
93305

MARK DATE REVISION


INTERIOR ELEV.  
UNIT. 400

JOB NUMBER 97140  
DATE 1/6/99  
SHEET 5.3  
OF 20

CHECK AND VERIFY ALL DIMENSIONS  
BEFORE PROCEEDING WITH THE  
WORK. REPORT DISCREPANCIES TO  
THE ARCHITECT