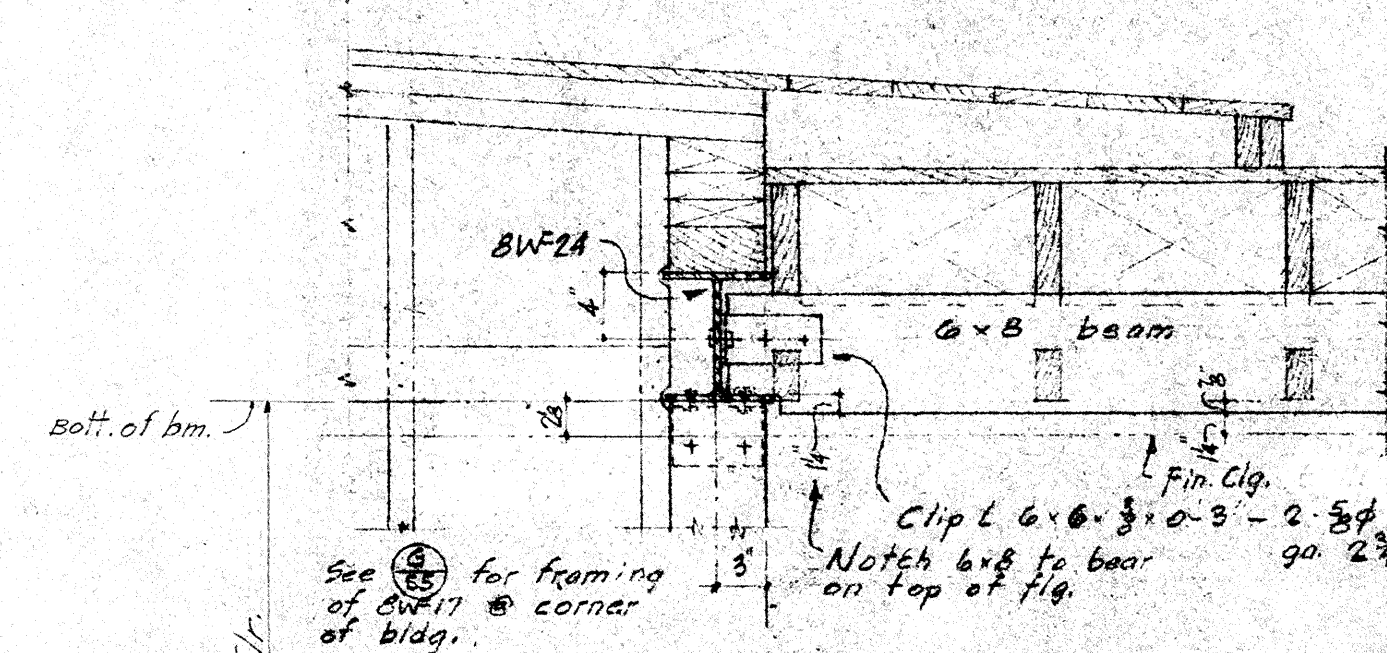
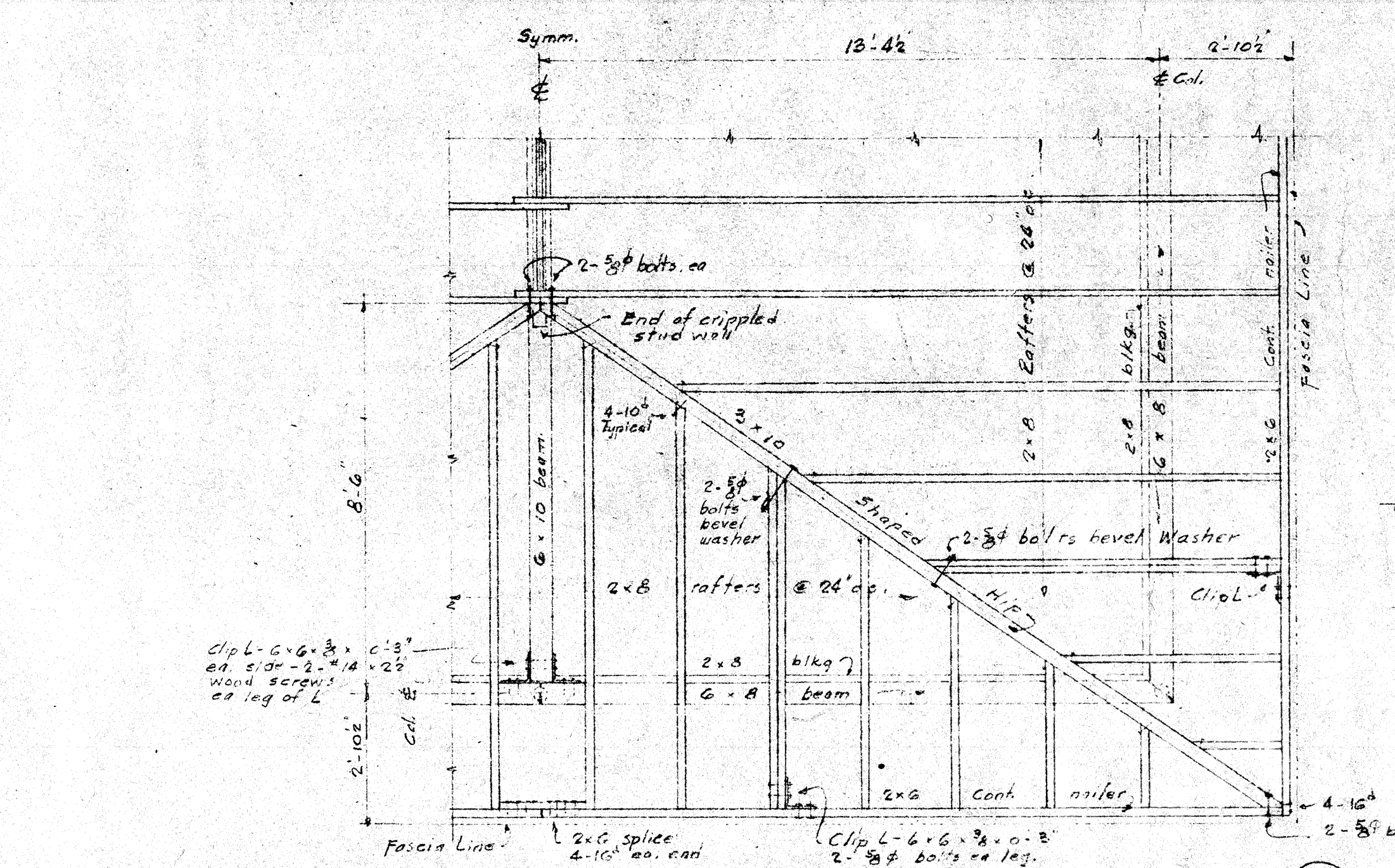


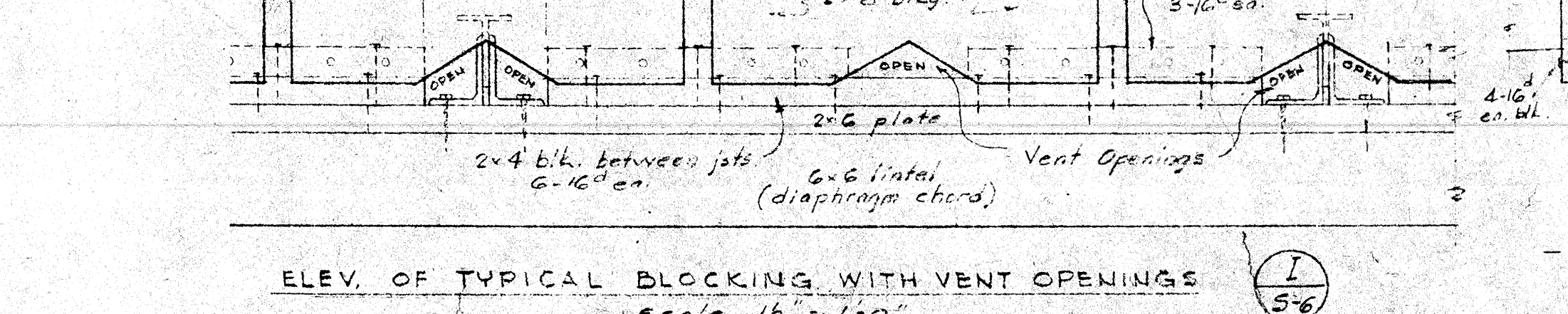
CORRIDOR BEAM FRAMING INTO CORNER OF BUILDING
Scale 1/2" = 1'-0"
ELEV. (F)
PLAN (F)



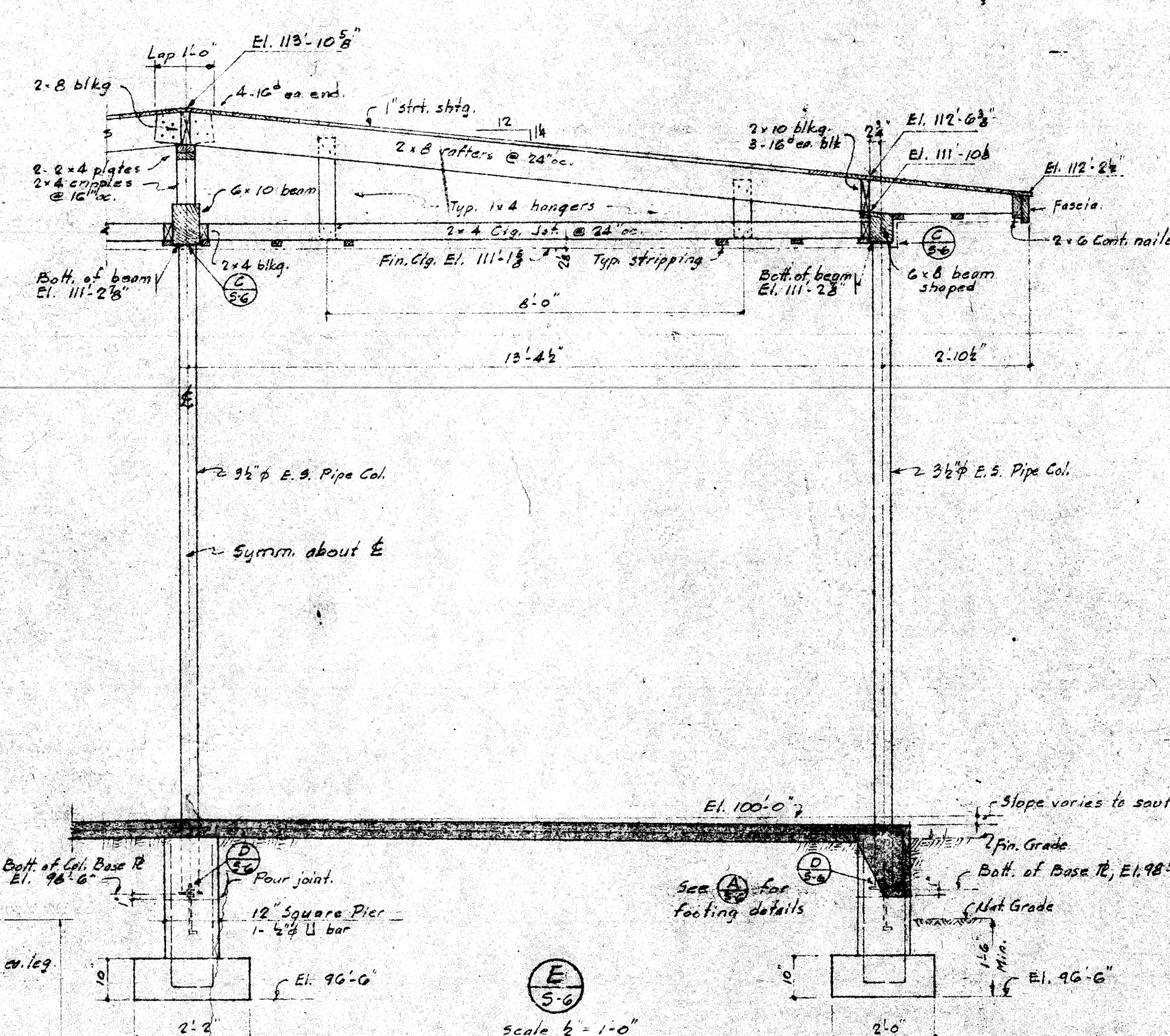
CORRIDOR BEAM FRAMING
Scale 1/2" = 1'-0"
ELEV. (G)



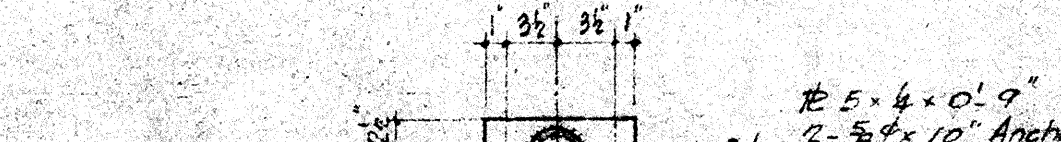
PLAN OF KINDERGARDEN COVERED AREA HIP ROOF FRAMING
Scale 1/2" = 1'-0"
ELEV. (H)



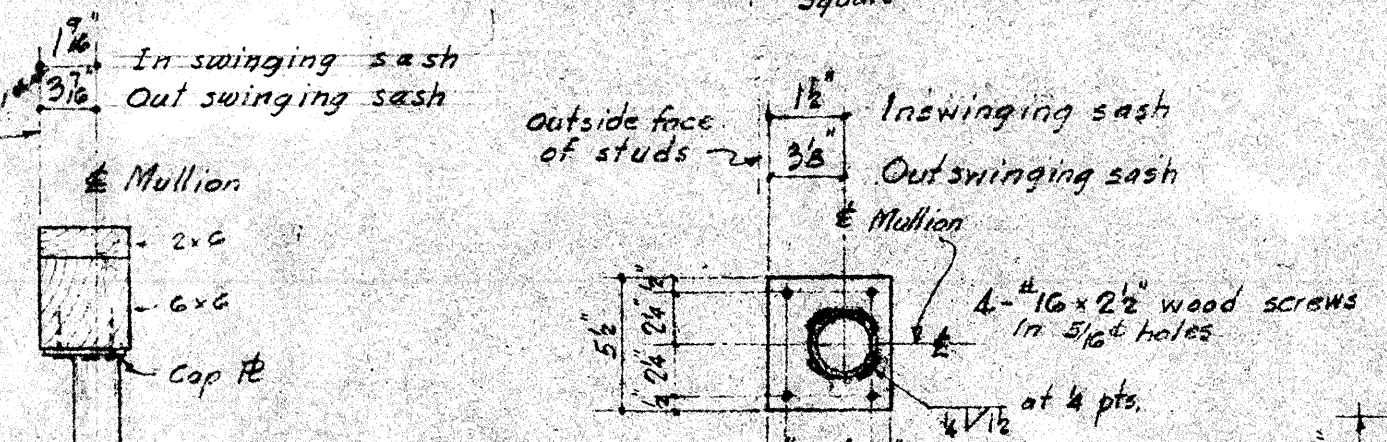
ELEV. OF TYPICAL BLOCKING WITH VENT OPENINGS
Scale 1/2" = 1'-0"
ELEV. (I)



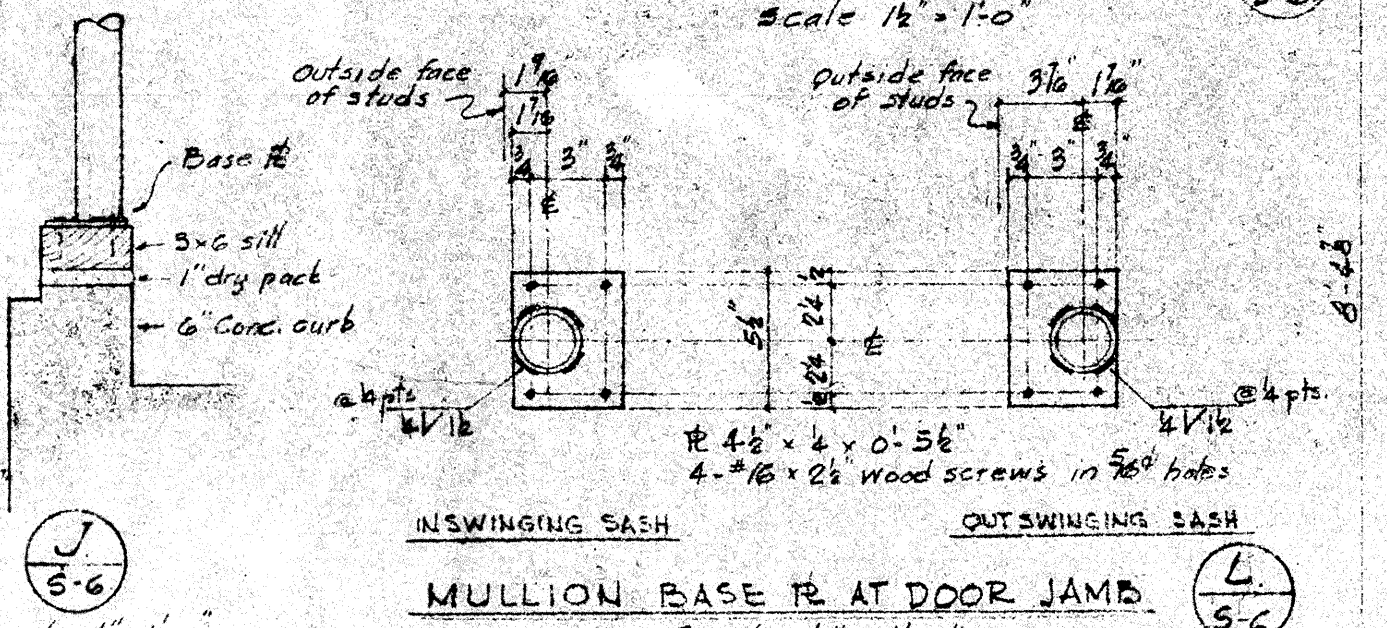
TYPICAL CORRIDOR COL. CAP PLATES
Scale 1/2" = 1'-0"
ELEV. (C)



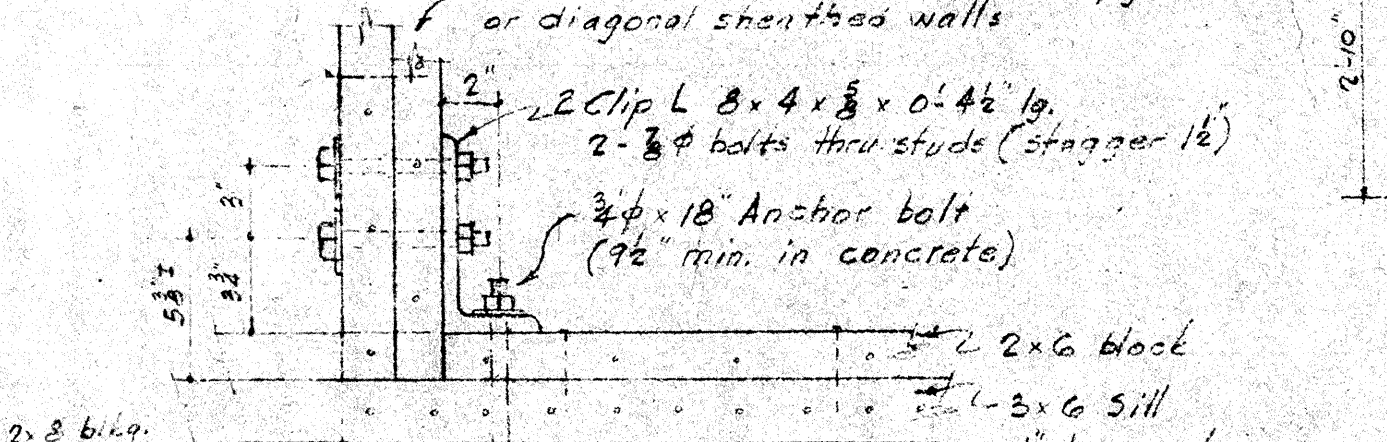
TYPICAL CORRIDOR COL. BASE PLATES
Scale 1/2" = 1'-0"
ELEV. (D)



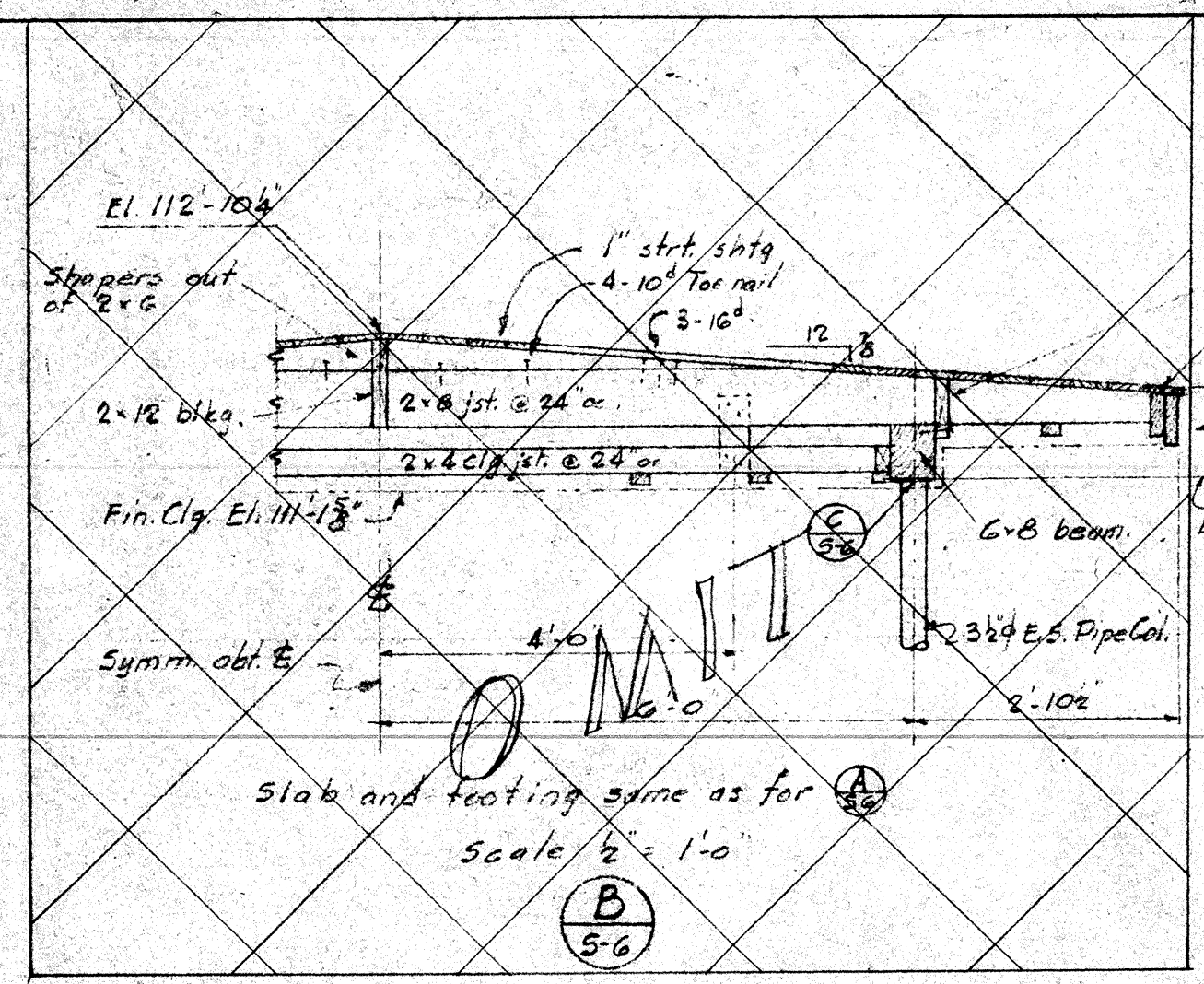
TYPICAL MULLION CAP & BASE PLATE
Scale 1/2" = 1'-0"
ELEV. (K)



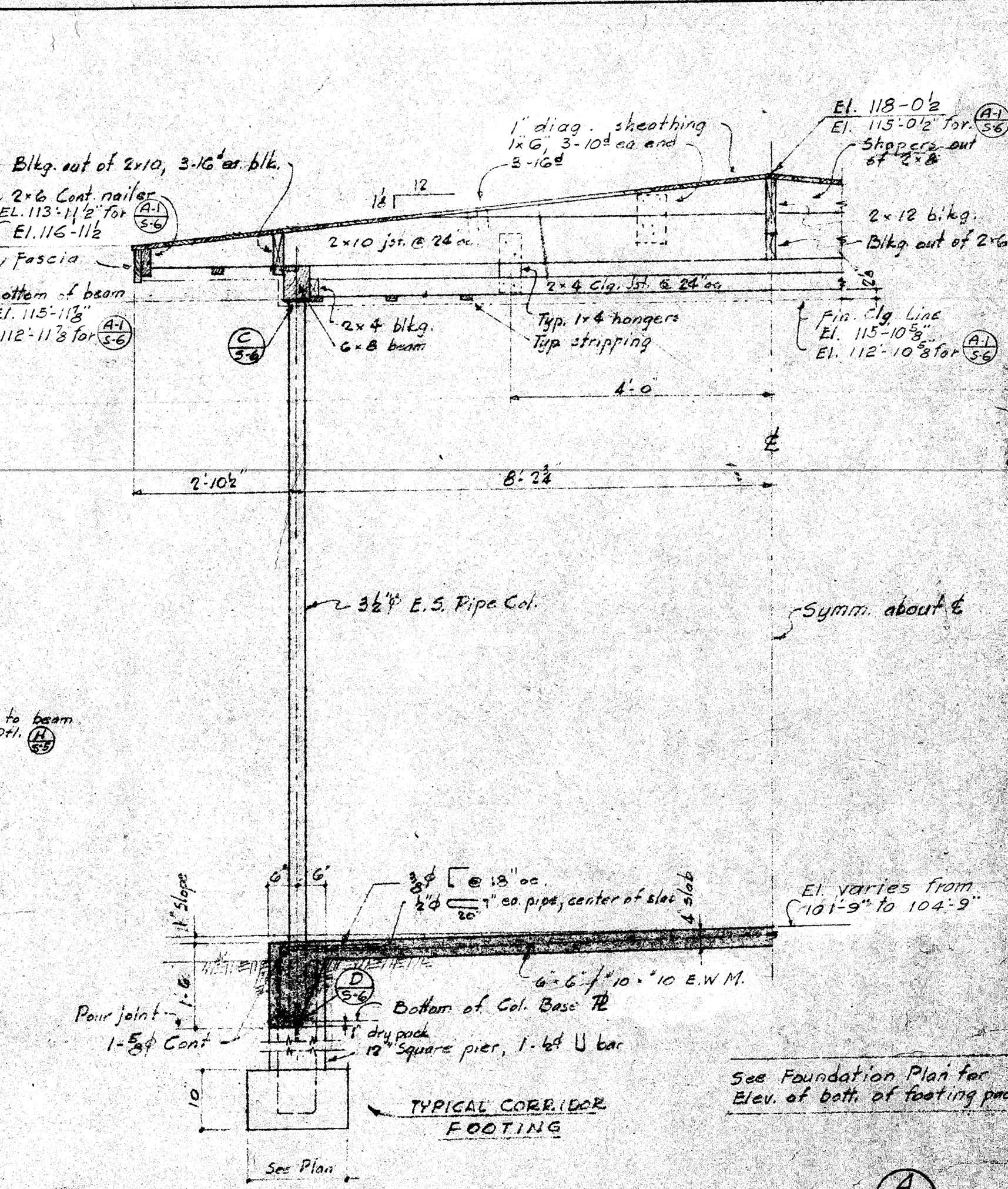
MULLION BASE PLATE AT DOOR JAMB
Scale 1/2" = 1'-0"
ELEV. (L)



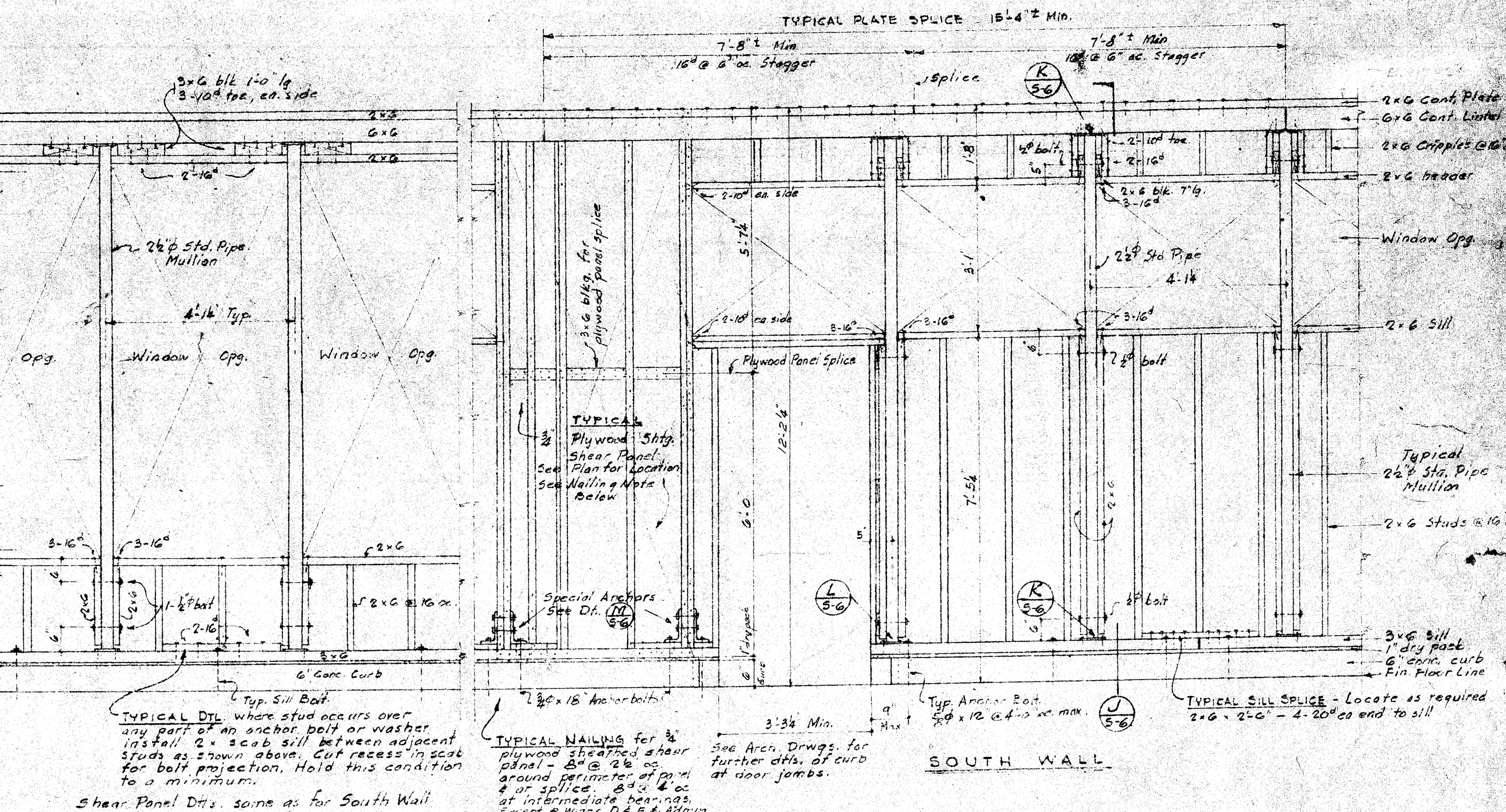
SPECIAL ANCHOR (MARKET 25A ON PLAN)
Scale 1/2" = 1'-0"
ELEV. (M)



TYPICAL CORRIDOR SECTION
Scale 1/2" = 1'-0"
ELEV. (A)



TYPICAL CORRIDOR SECTION
Scale 1/2" = 1'-0"
ELEV. (A)



TYPICAL CLASSROOM WALL FRAMING
Scale 1/2" = 1'-0"
ELEV. (N)

HILLMAN & NOWELL STRUCTURAL ENGINEERS ARCHITECTS BUILDING - LOS ANGELES 11 <i>Lawrence Nowell</i>	STATE OF CALIFORNIA DEPARTMENT OF PUBLIC WORKS DIVISION OF ARCHITECTURE APPROVED: 7-22-48 5742	BAKERSFIELD CITY SCHOOLS 1600K ST. BAKERSFIELD CALIF. BOARD OF EDUCATION APPROVED: 7/22/48 PRESIDENT: Ernest L. McCoy SECRETARY:	ELEMENTARY SCHOOL BAKERSFIELD CITY SCHOOL DISTRICT PIONEER DRIVE BAKERSFIELD CALIFORNIA ERNEST L. MCCOY AIA ARCHITECT 135 MAY BLDG. BAKERSFIELD CALIFORNIA	DATE: 7-22-48 DRAWN BY: [Signature] CHECKED BY: [Signature] SHEET NO: C-330 OF 125 SHEETS
	TYPICAL PLATE SPLICE - 15/16" MIN. STAGGER TYPICAL NAILING for 2x6 plywood sheathed shear panels - 2x6 @ 16" o.c. ground perimeter of open wall. 2x6 @ 12" o.c. at intermediate bearings. 2x6 @ 16" o.c. at top and bottom ground perimeter of plywood sheath.			SOUTH WALL NORTH WALL