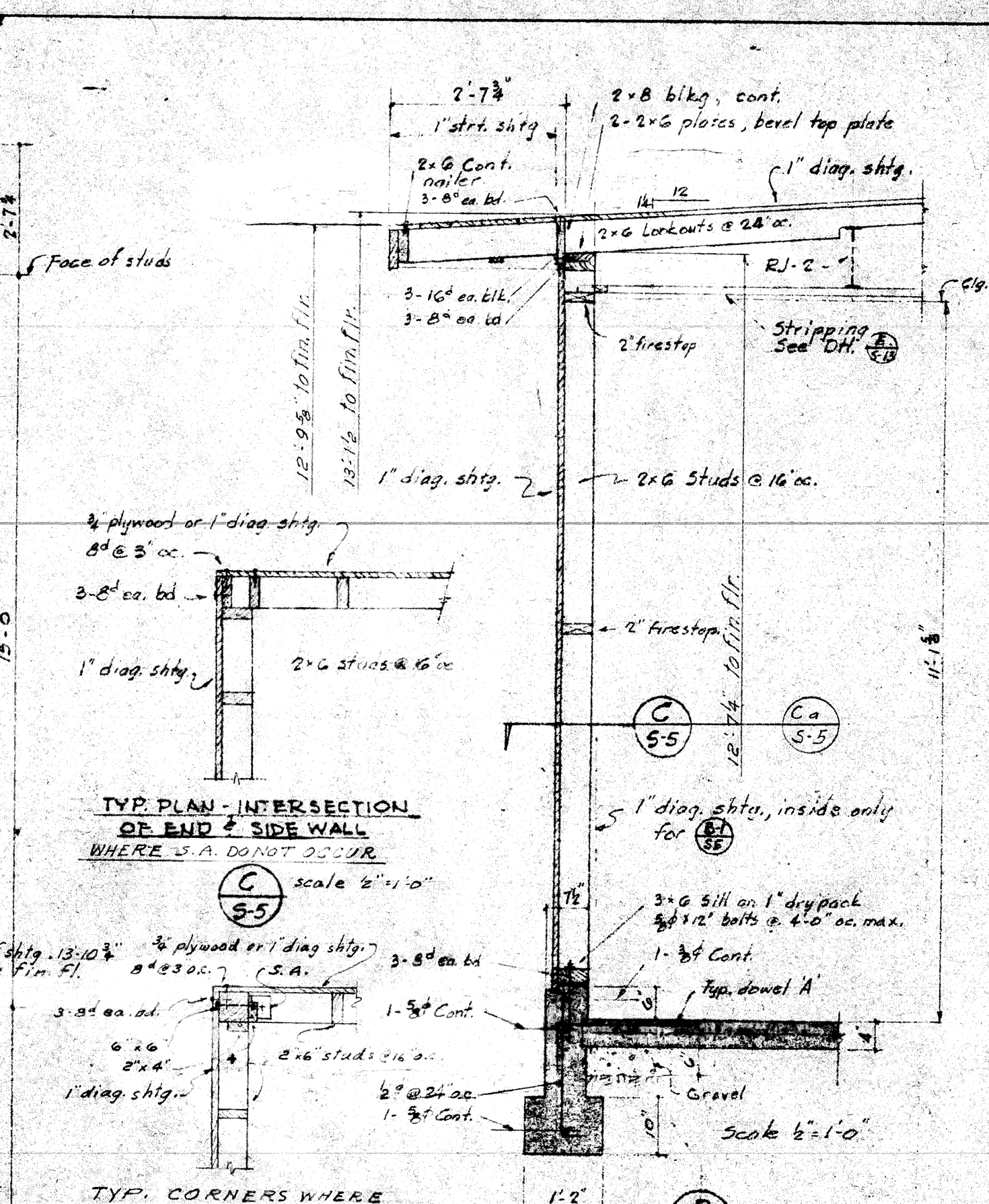
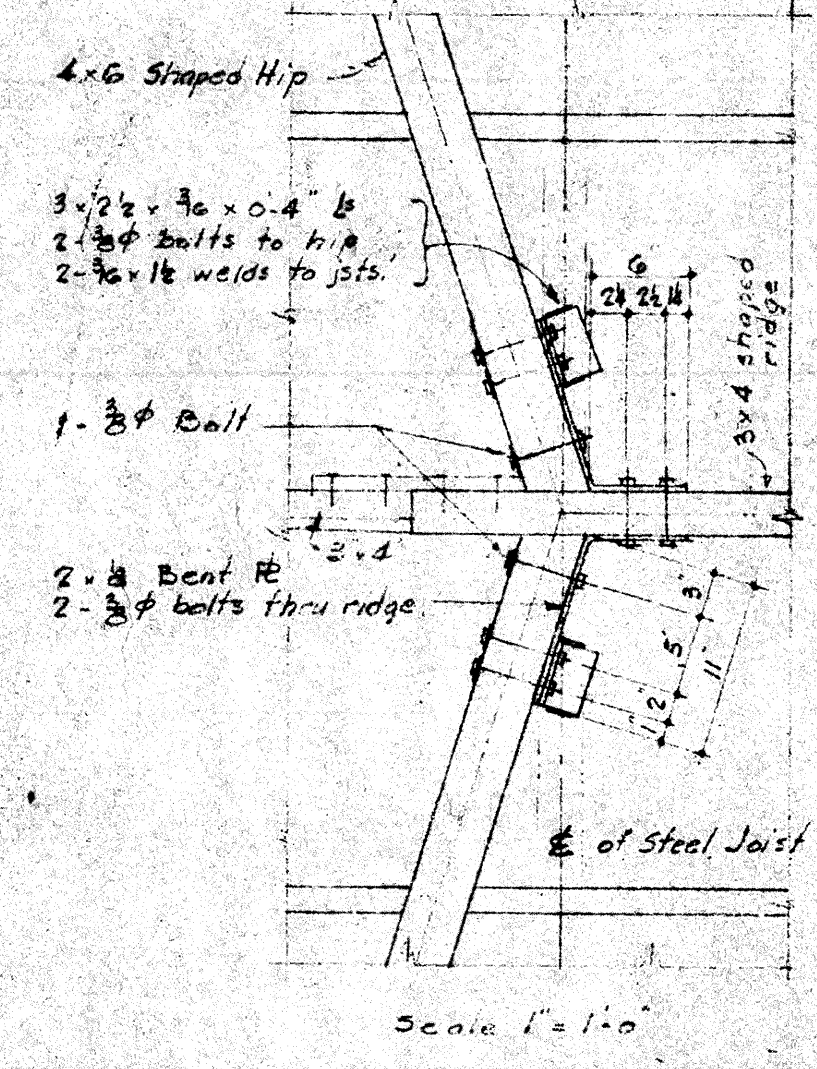


TYPICAL CLASSROOM & CORRIDOR ROOF HIP FRAMING
Scale 3/8" = 1'-0"

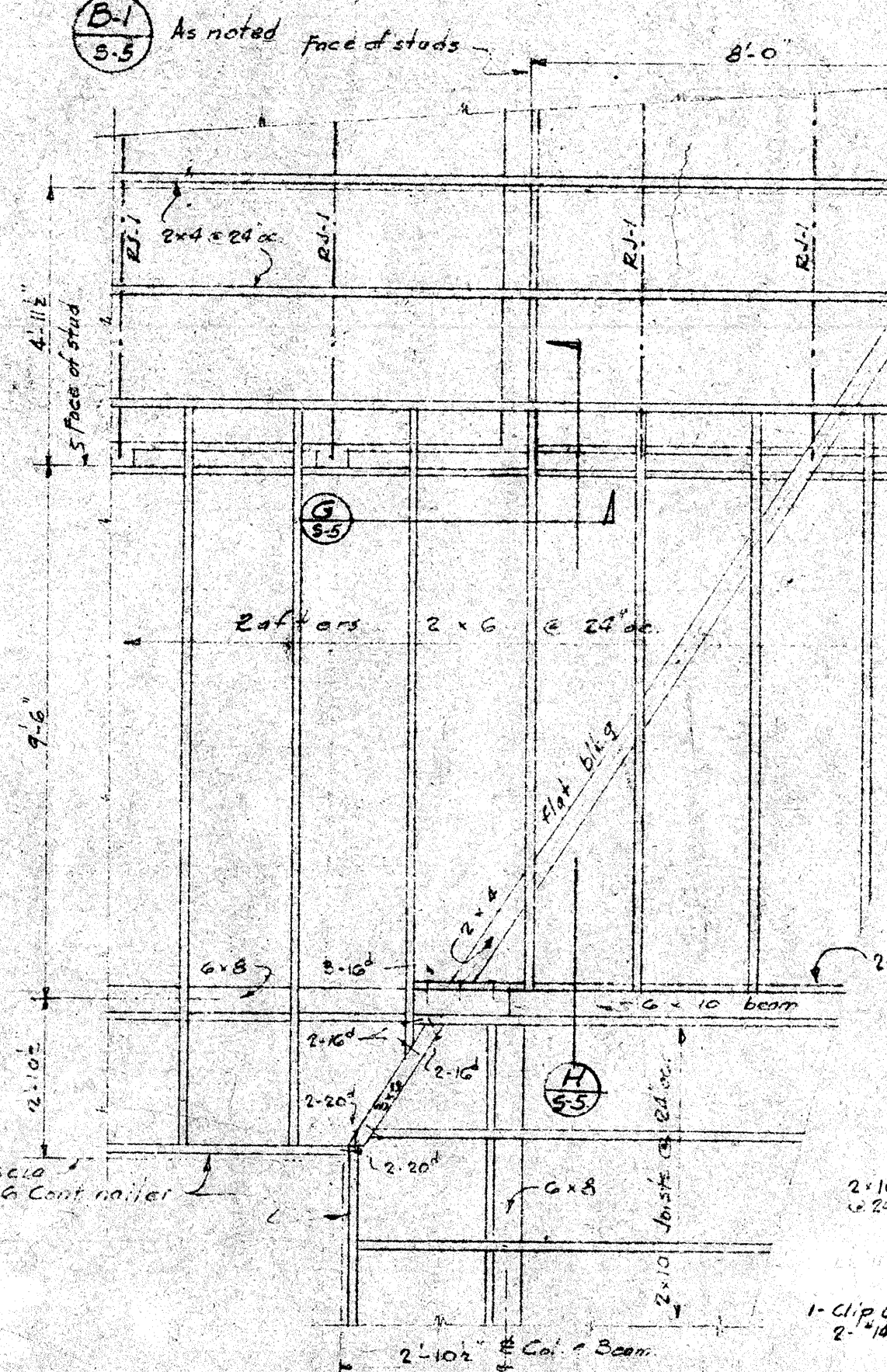


TYP. PLAN - INTERSECTION OF END & SIDE WALL WHERE A DOPART OCCURS
Scale 3/8" = 1'-0"

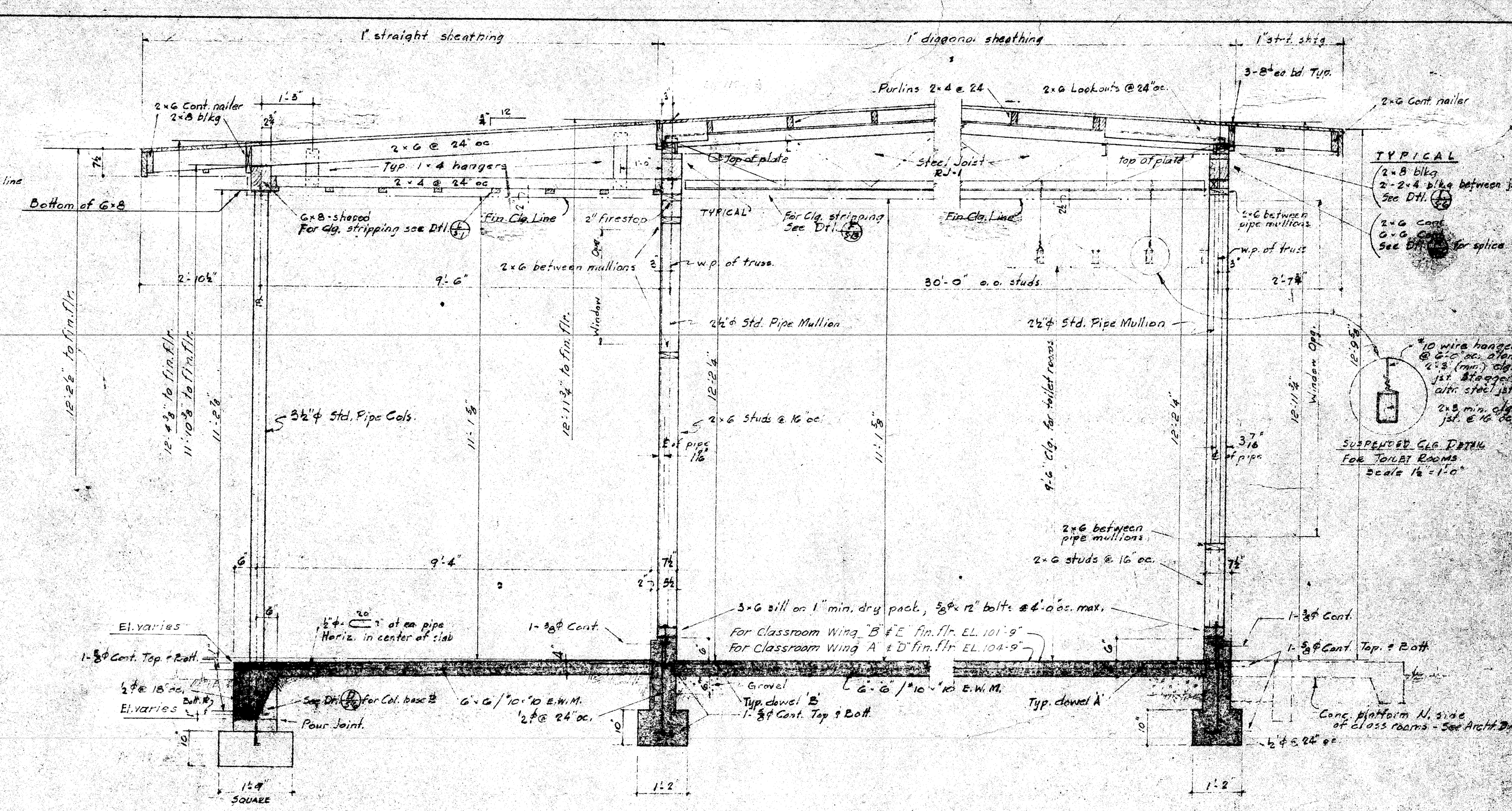
TYP. CORNERS WHERE SP. ANCHORS OCCUR
Scale 3/8" = 1'-0"



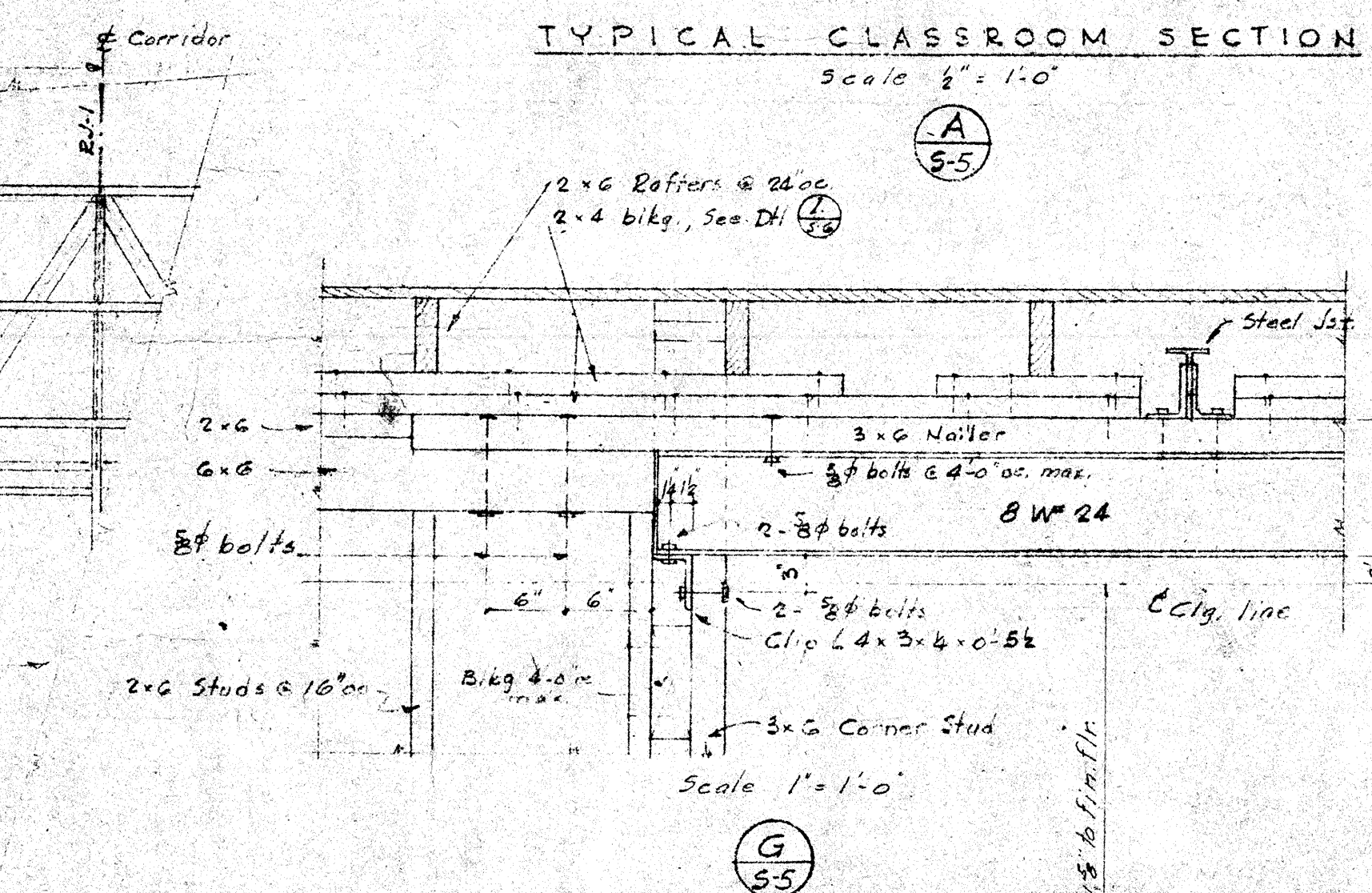
Scale 1" = 1'-0"



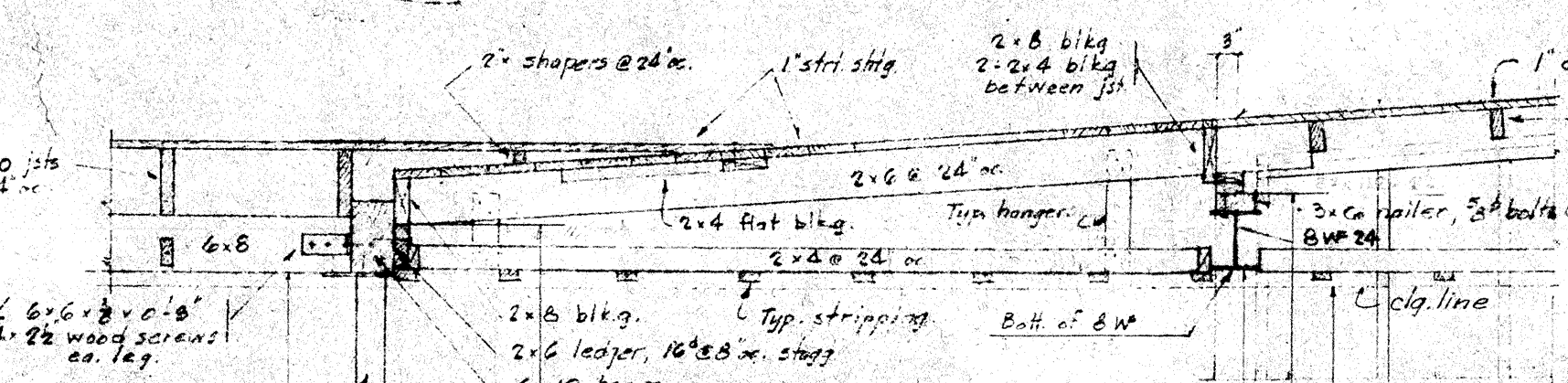
TYPICAL CORRIDOR ROOF VALLEY FRAMING
Scale 3/8" = 1'-0"



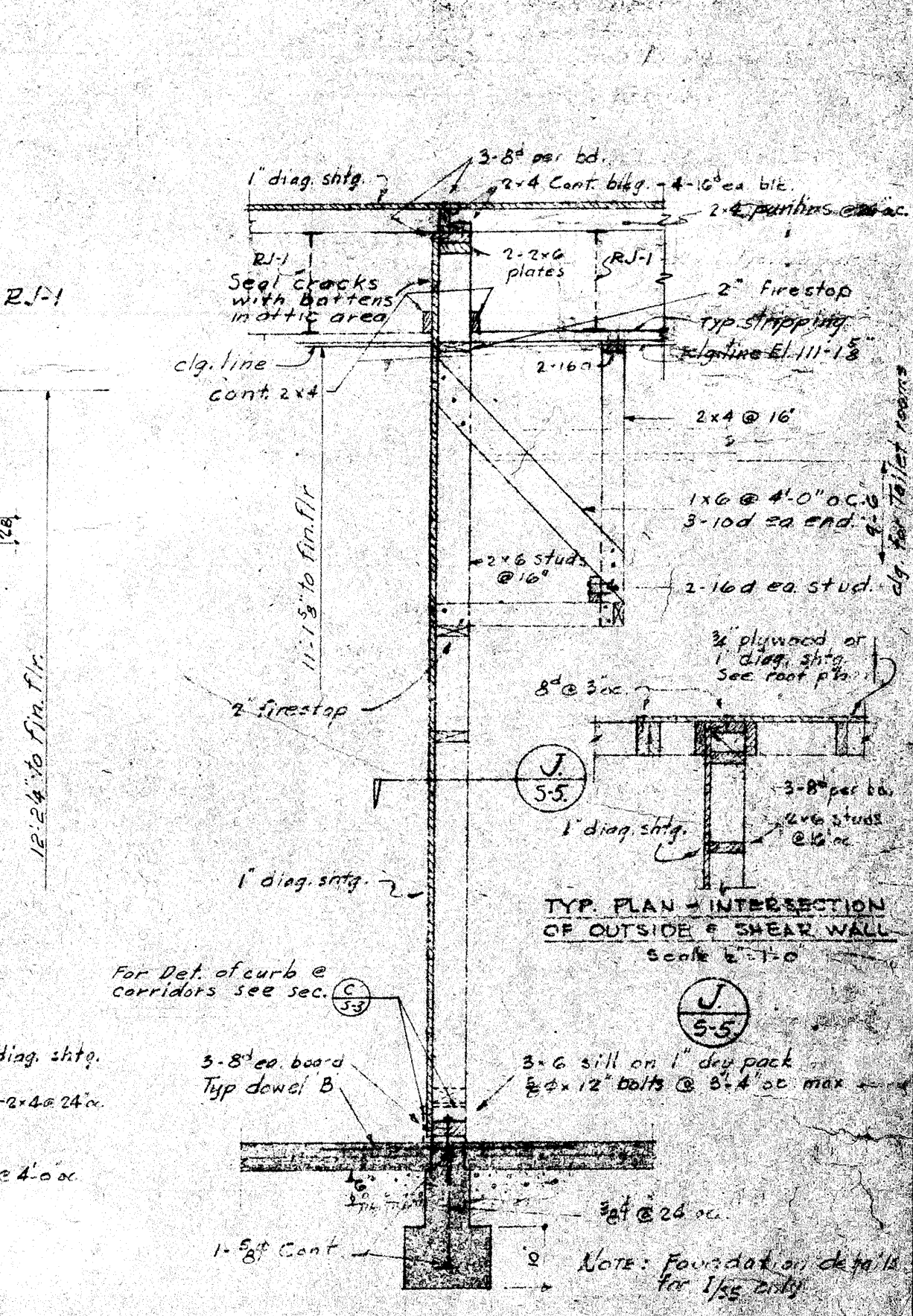
TYPICAL CLASSROOM SECTION
Scale 3/8" = 1'-0"



Scale 1" = 1'-0"



Scale 3/8" = 1'-0"



TYP. PLAN - INTERSECTION OF OUTSIDE & SHEAR WALL
Scale 3/8" = 1'-0"

Note: See Foundation Plan for Elevation of curb & corridors see sec. 59
 Note: Foundation details for 155 2nd
 Note: Foundation details for 155 2nd

HILLMAN & NOWELL STRUCTURAL ENGINEERS ARCHITECTS BUILDING LOS ANGELES 19 <i>Lawrence Nowell</i>	STATE OF CALIFORNIA DEPARTMENT OF PUBLIC WORKS DIVISION OF ARCHITECTURE APPROVED 5742	BAKERSFIELD CITY SCHOOLS 1600 E. ST. BAKERSFIELD CALIF. BOARD OF EDUCATION APPROVED Ernest L. McCoy	ELEMENTARY SCHOOL BAKERSFIELD CITY SCHOOL DISTRICT PIONEER DRIVE BAKERSFIELD CALIFORNIA ERNEST L. MCCOY AIA ARCHITECT	DATE DRAWN BY CHECKED BY SHEET NO. 55 OF 15 SHEETS
	APPROVED 7-22-48 Ernest L. McCoy	SECRETARY Ernest L. McCoy	PRESIDENT Ernest L. McCoy	ARCHITECT Ernest L. McCoy