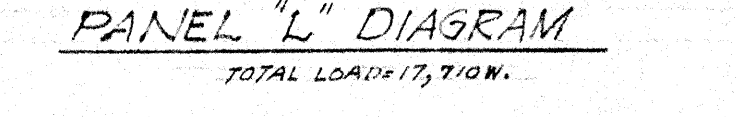
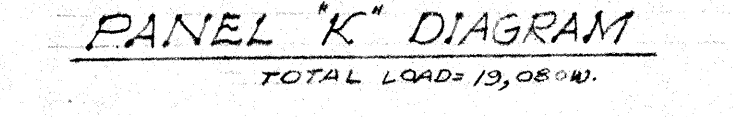
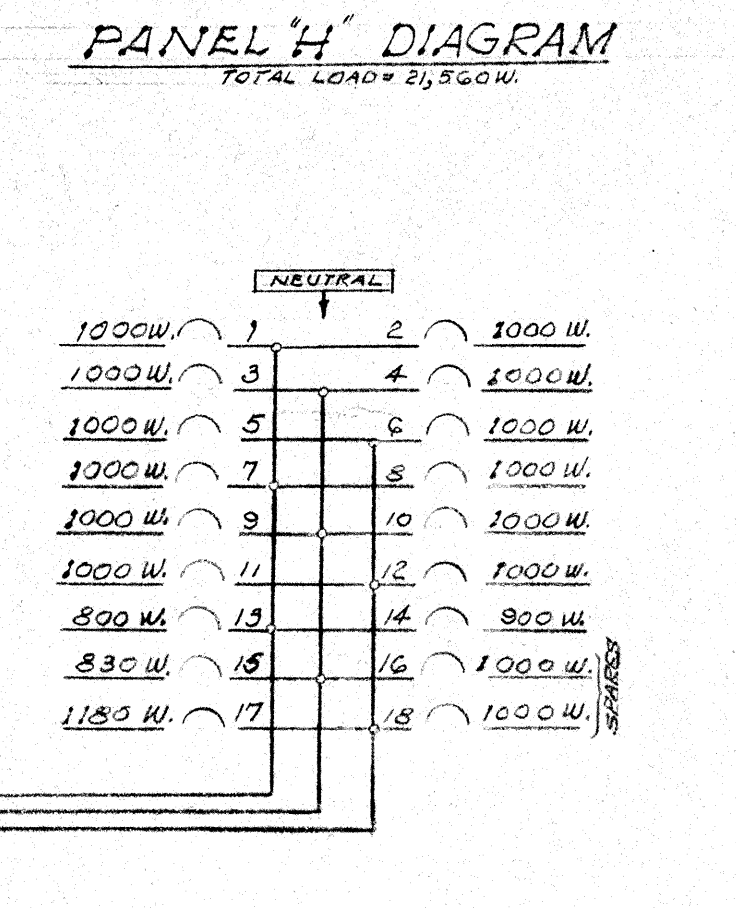
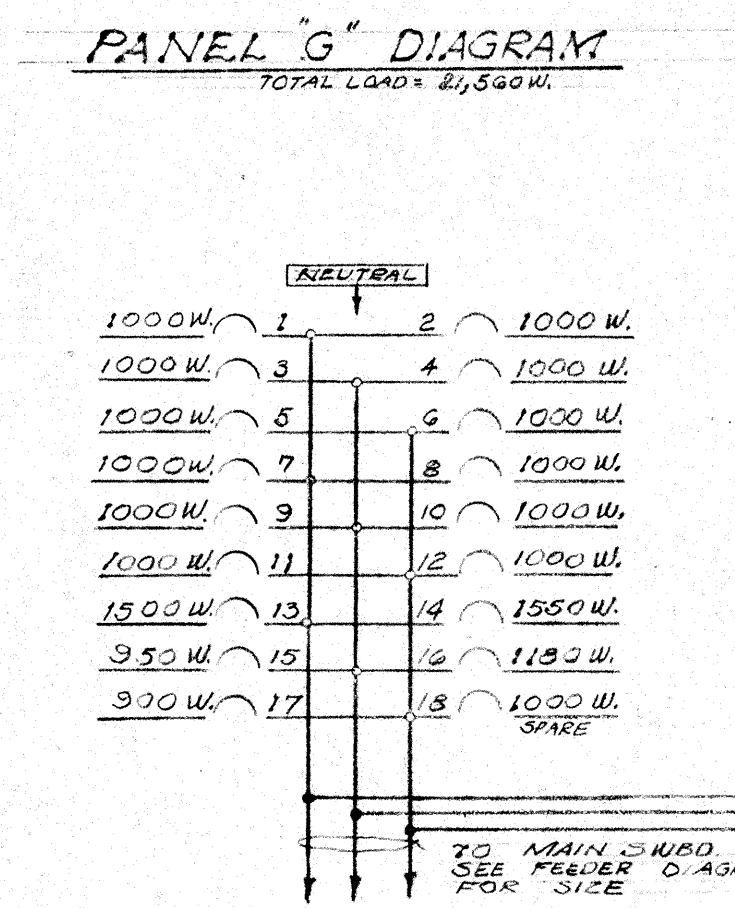
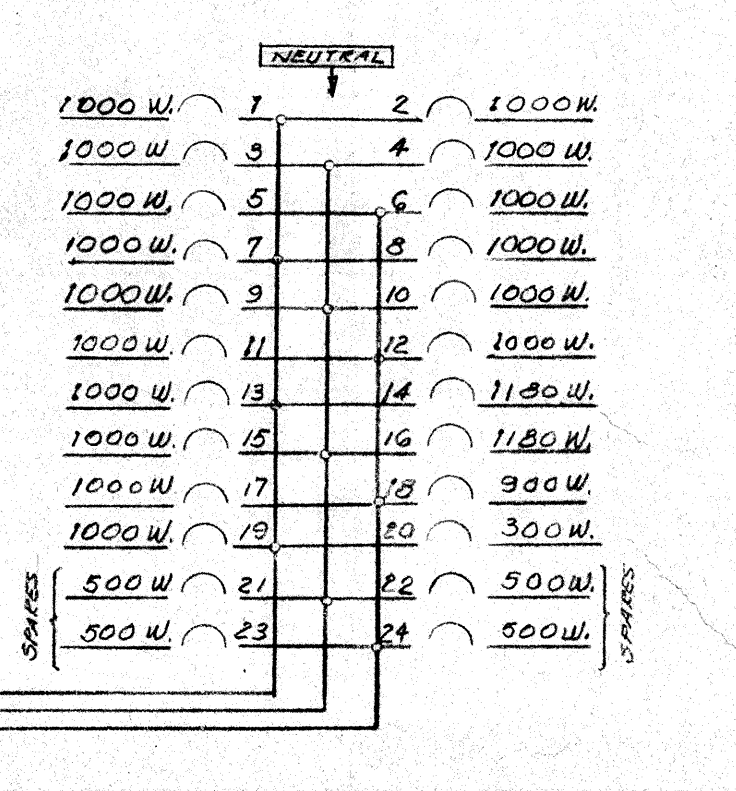
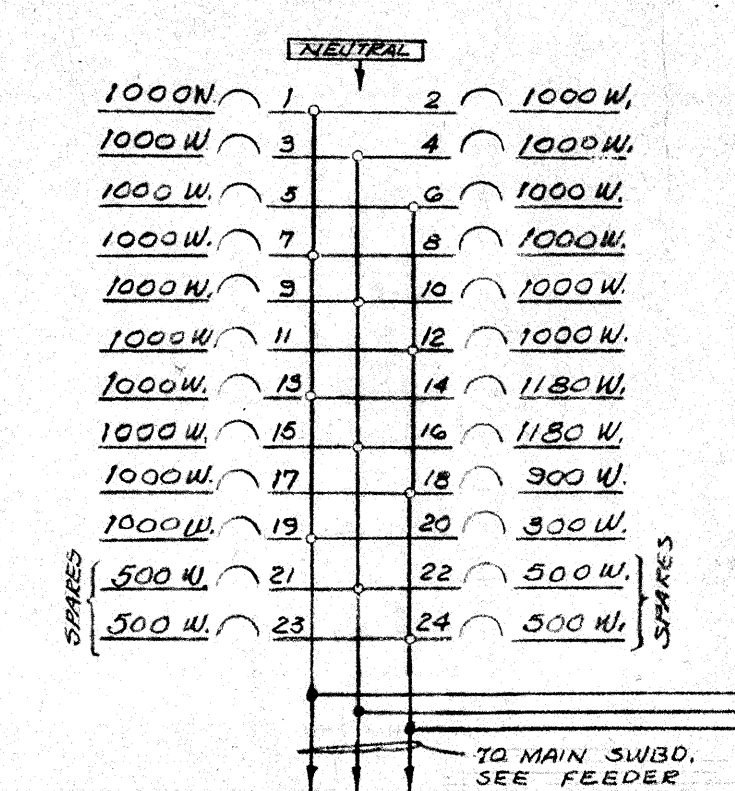
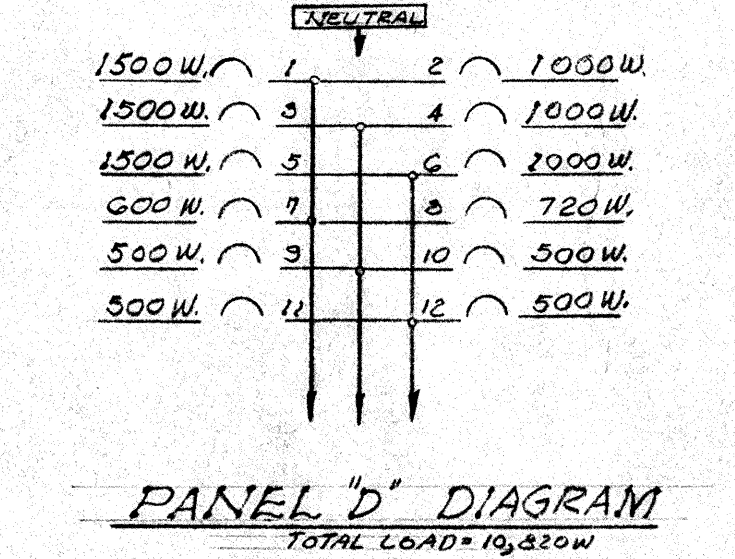
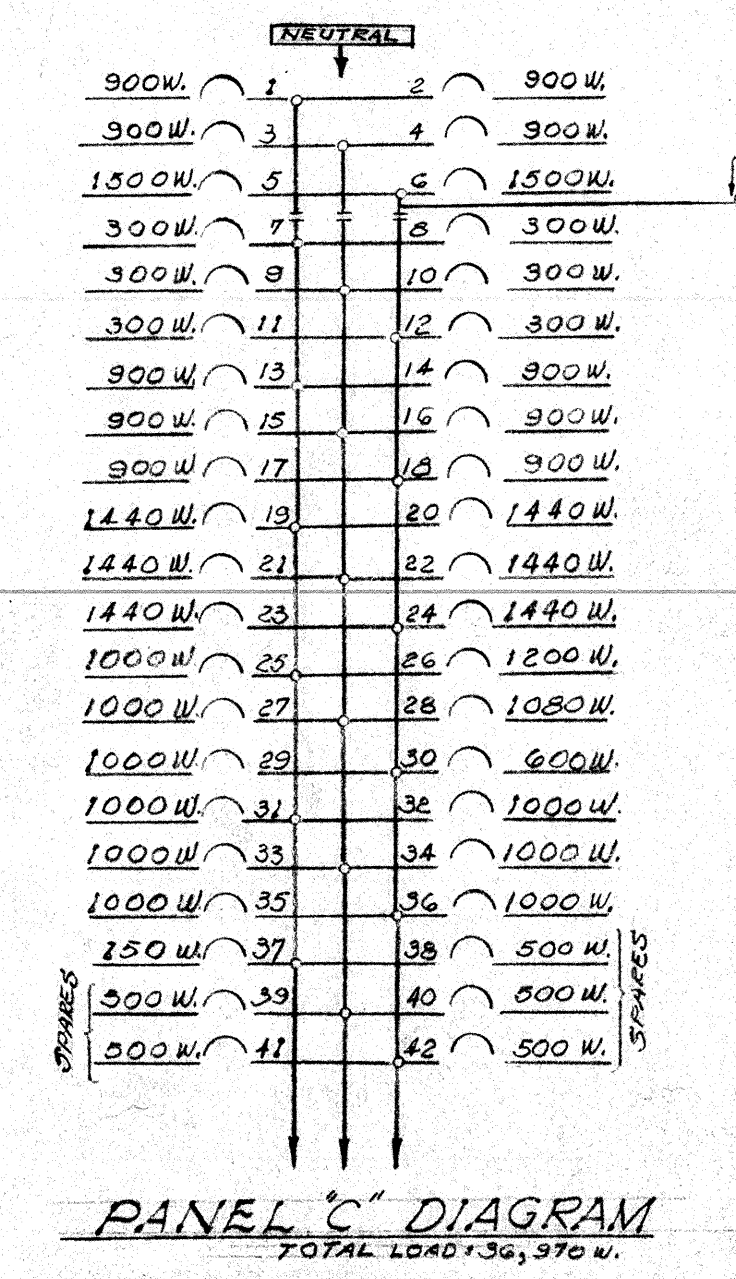
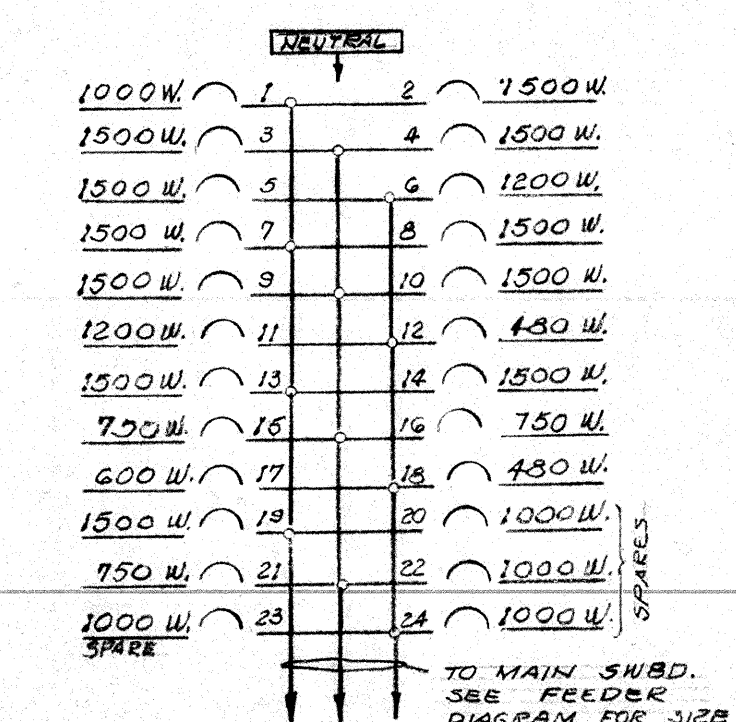
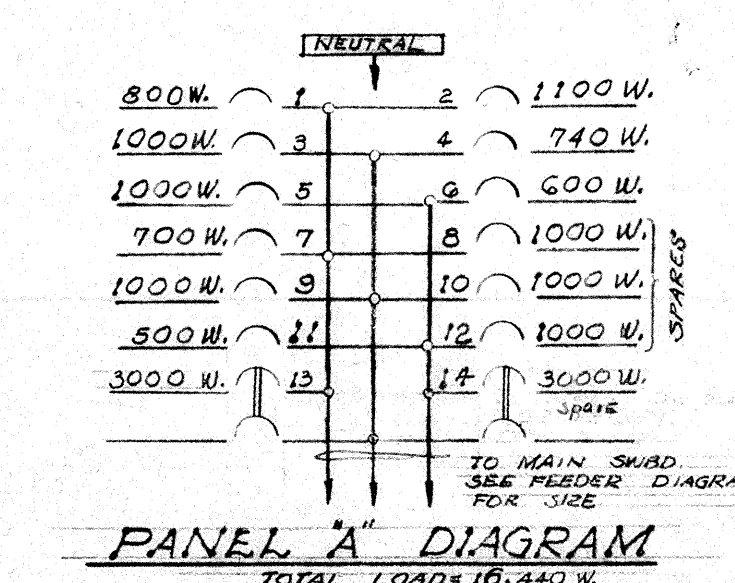


SITE PLAN
SCALE: 1/16" = 1'-0"



HILBURG, BYLER & HENGSTLER
MECHANICAL AND ELECTRICAL ENGINEERS
257 SOUTH SPRING STREET
LOS ANGELES 12, CALIFORNIA

STATE OF CALIFORNIA
DEPARTMENT OF PUBLIC WORKS
DIVISION OF ARCHITECTURE
APPROVED: 7/20 1945
7-22-45
5743
Harry W. Bolin
G.P.

BAKERSFIELD CITY SCHOOLS
1600 K. ST. BAKERSFIELD CAL.
BOARD OF EDUCATION
APPROVED: 7/20 1945
PRESIDENT: Ernest L. Mc Coy A.I.A.
SECRETARY: [Name]

-ELECTRICAL-
ELEMENTARY SCHOOL
BAKERSFIELD CITY SCHOOL DIST.
PIONEER DRIVE
BAKERSFIELD CALIFORNIA
ERNEST L. MC COY A.I.A.
ARCHITECT
135 MAY BLDG. BAKERSFIELD
1012 19TH ST. CALIFORNIA
DATA SHEET NO. 110
DRAWN BY: [Name]
CHECKED BY: [Name]
SH. NO. E-2
OF SH. NO.