

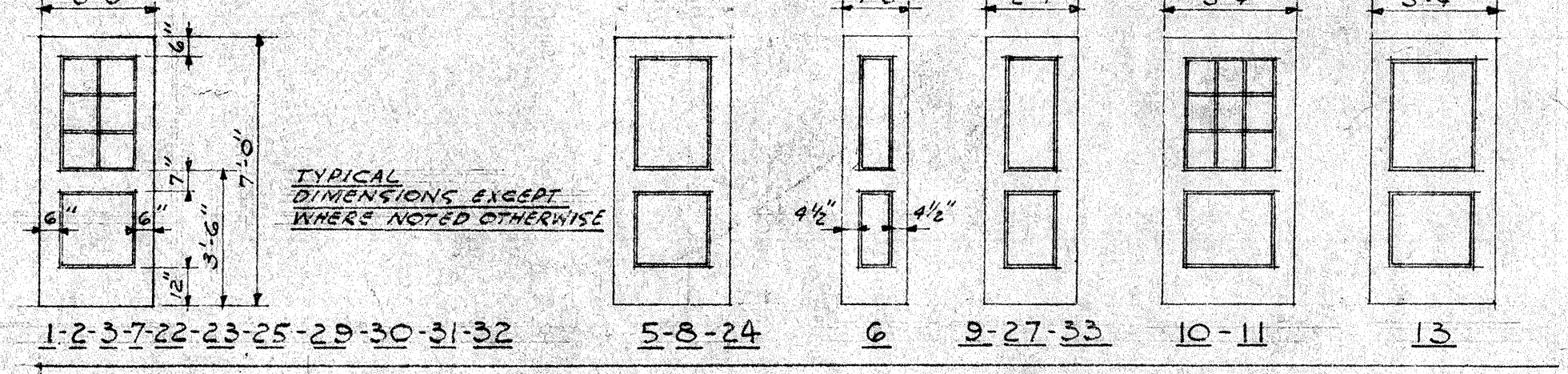
WINDOW SCHEDULE

WINDOW TYPE	KIND OF GLASS	VENTS SCREENED	SIZE	HEAD DET. #	JAMB DET. #	MULLION DET. #	JAMB DET. #	SILL DET. #	REMARKS
A	CLR DS.	YES	4'-0" x 8'-1"	5	2	3	4	8	
B	CLR DS.	—	4'-0" x 12'-6"	5	15	2	—	6	TRANS. BAR FOR SILL
C	CLR DS.	YES	4'-0" x 12'-9"	12	11	10	11	14	OVER DOOR, TRANS. BAR DET. 13
D	CLR DS.	YES	4'-0" x 12'-9"	12	11	10	11	14	
E	CLR DS.	YES	4'-0" x 12'-9"	12	11	10	11	14	OBS. CL. TO OB. HEIGHT
F	CLR DS.	YES	4'-0" x 12'-9"	12	11	10	11	14	
G	CLR DS.	YES	4'-0" x 12'-9"	12	11	10	11	14	
H	CLR DS.	YES	4'-0" x 12'-9"	12	11	10	11	14	HORIZ. BAR DET. 10
J	CLR DS.	YES	4'-0" x 12'-9"	12	11	10	11	14	
K	CLR DS.	YES	4'-0" x 12'-9"	12	11	10	11	14	
L	CLR DS.	YES	4'-0" x 12'-9"	12	11	10	11	14	
M	CLR DS.	YES	4'-0" x 12'-9"	12	11	10	11	14	
N	CLR DS.	YES	4'-0" x 12'-9"	12	11	10	11	14	
O	CLR DS.	YES	4'-0" x 12'-9"	12	11	10	11	14	
P	CLR DS.	—	4'-0" x 12'-9"	12	11	10	11	14	TRANS. BAR FOR SILL

NOTE: ALL EXIT DOORS SHALL BE OPENABLE FROM THE INSIDE AT ALL TIMES WITHOUT THE USE OF A KEY OR ANY SPECIAL DEVICE OR KNOWLEDGE.

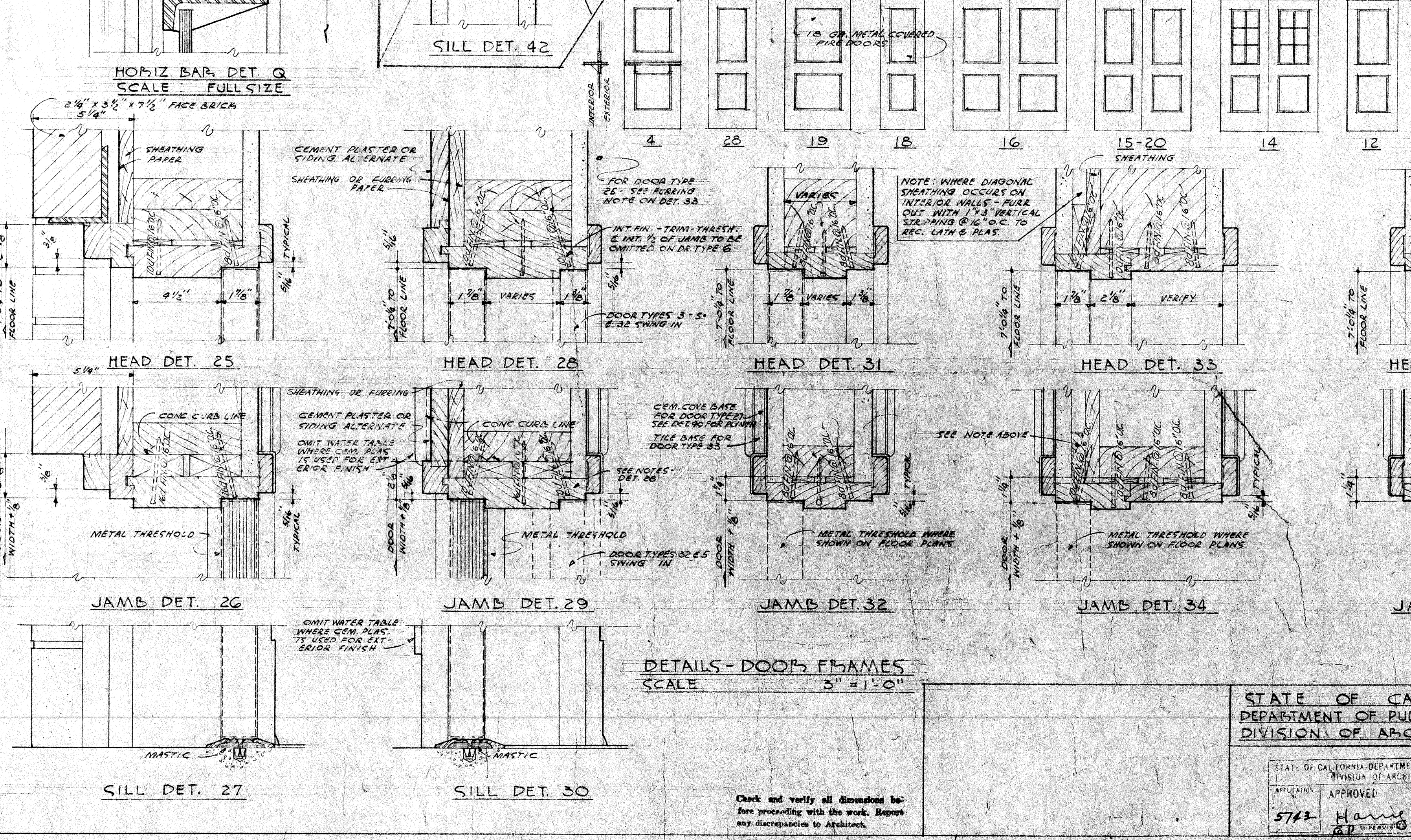
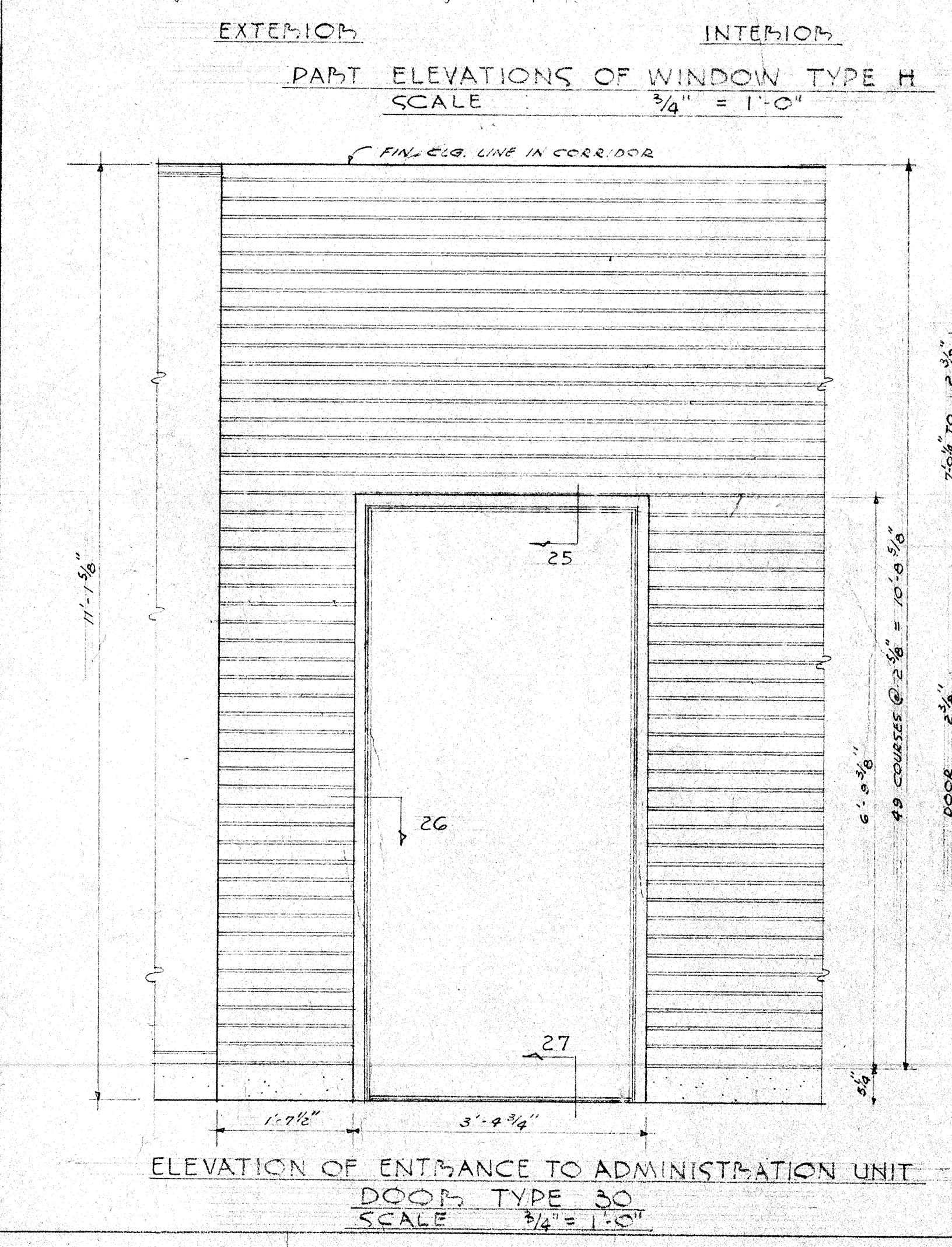
DOOR SCHEDULE - CONTINUED

DOOR TYPE	KIND OF WOOD GLASS PANELS	SIZE	HEAD DET. #	TRANS. BAR DET. #	JAMB DET. #	SILL DET. #	JAMB DET. #	REMARKS
22	OBS. WIRE	1 3'-0" x 7'-0" x 1 3/8"	—	13	9	7	9	SEE NOTE DET. 28/13
23	CLR WIRE	1 3'-0" x 7'-0" x 1 3/8"	—	13	9	7	9	
24	—	2 3'-0" x 7'-0" x 1 3/8"	33	—	34	—	34	
25	CLR WIRE	1 3'-0" x 7'-0" x 1 3/8"	28	—	29	30	29	SEE NOTE ON DET. 28
26	—	2 3'-0" x 7'-0" x 1 3/8"	35	—	36	—	36	CASED OPENING
27	—	2 2'-4" x 7'-0" x 1 3/8"	31	—	32	—	32	SEE NOTE - DET. 32
28	—	2 2'-4" x 7'-0" x 1 3/8"	31	—	32	—	32	
29	OBS. WIRE	1 3'-0" x 7'-0" x 1 3/8"	—	13	10	7	10	
30	CLR WIRE	1 3'-0" x 7'-0" x 1 3/8"	25	—	26	27	26	
31	CLR WIRE	1 3'-0" x 7'-0" x 1 3/8"	28	—	29	30	29	
32	CLR WIRE	1 3'-0" x 7'-0" x 1 3/8"	28	—	29	30	29	SEE NOTE ON DET. 29
33	—	2 2'-4" x 7'-0" x 1 3/8"	31	—	32	—	32	SEE NOTE ON DET. 32



DOOR SCHEDULE

DOOR TYPE	KIND OF GLASS	WOOD PANELS	SIZE	HEAD DET. #	TRANS. BAR DET. #	JAMB DET. #	SILL DET. #	JAMB DET. #	REMARKS		
1	OBS. WIRE	1 3'-0" x 7'-0" x 1 3/8"	—	13	9	7	9				
2	CLR WIRE	1 3'-0" x 7'-0" x 1 3/8"	—	13	9	7	9				
3	OBS. WIRE	1 3'-0" x 7'-0" x 1 3/8"	28	—	29	30	29		SEE NOTE - DET. 28		
4	—	2 3'-0" x 7'-0" x 1 3/8"	28	—	29	30	29		DUTCH DOOR		
5	—	2 3'-0" x 7'-0" x 1 3/8"	28	—	29	30	29		SEE NOTE - DET. 28		
6	—	2 1'-8" x 7'-0" x 1 3/8"	28	—	29	—	29		SEE NOTE - DET. 28		
7	OBS. WIRE	1 3'-0" x 7'-0" x 1 3/8"	28	—	29	30	29				
8	—	2 3'-0" x 7'-0" x 1 3/8"	31	—	32	—	32				
9	—	2 2'-4" x 7'-0" x 1 3/8"	31	—	32	—	32				
10	CLR WIRE	1 3'-0" x 7'-0" x 1 3/8"	28	—	29	30	29				
11	CLR WIRE	1 3'-0" x 7'-0" x 1 3/8"	31	—	32	—	32				
12	—	2 2'-4" x 7'-0" x 1 3/8"	31	—	32	—	32				
13	—	2 3'-0" x 7'-0" x 1 3/8"	31	—	32	—	32				
14	CLR WIRE	1 3'-0" x 7'-0" x 1 3/8"	28	—	29	30	29		PAIR		
15	—	2 3'-0" x 7'-0" x 1 3/8"	31	—	32	—	32		PAIR		
16	—	2 3'-0" x 7'-0" x 1 3/8"	28	—	29	30	29		PAIR		
17	—	2 3'-0" x 7'-0" x 1 3/8"	28	A-9	23	A-9	24	A-9	23	A-9	ROLLING DOOR - SEE DET. 13 FOR SILL - CLASS 'C' FIRE DOOR
18	—	2 3'-0" x 7'-0" x 1 3/8"	37	—	38	—	38		38		CLASS 'C' FIRE DOOR
19	—	2 3'-0" x 7'-0" x 1 3/8"	28	—	29	30	29		29		PAIR
20	—	2 3'-0" x 7'-0" x 1 3/8"	28	A-10	—	—	—	—	—	—	FLUSH PANEL DOOR DET. 13 FOR SILL INSULATION CLASS 'C' FIRE DOOR SIMILAR TO DOOR 17
21	—	2 3'-0" x 7'-0" x 1 3/8"	37	A-10	—	—	—	—	—	—	
24	—	2 3'-0" x 7'-0" x 1 3/8"	37	—	—	—	—	—	—	—	



STATE OF CALIFORNIA DEPARTMENT OF PUBLIC WORKS DIVISION OF ARCHITECTURE APPROVED: <i>Harvey B. Bell</i> 5/22	BAKERSFIELD CITY SCHOOLS 1600 E. ST. BAKERSFIELD CALIF. BOARD OF EDUCATION APPROVED: <i>Ernest L. McCoy</i> 9/22 1946 PRESIDENT SECRETARY	ELEMENTARY SCHOOL BAKERSFIELD CITY SCHOOL DISTRICT PIONEERS DRIVE BAKERSFIELD CALIFORNIA ERNEST L. MCCOY AIA. ARCHITECT	DATE: 3/30/46 DRAWN BY: C.W.G. CHECKED BY: C.W.G. SHEET NO.: 12 OF 18 123 MAIN BLDG. BAKERSFIELD CALIFORNIA
--	---	--	---