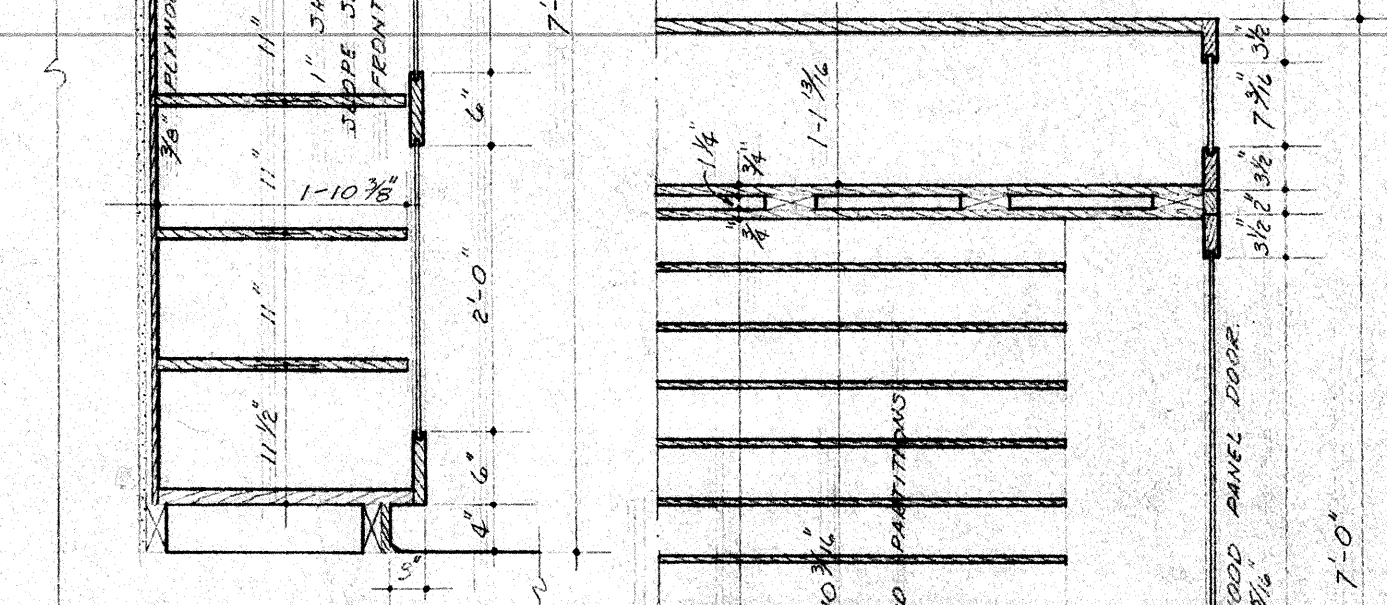
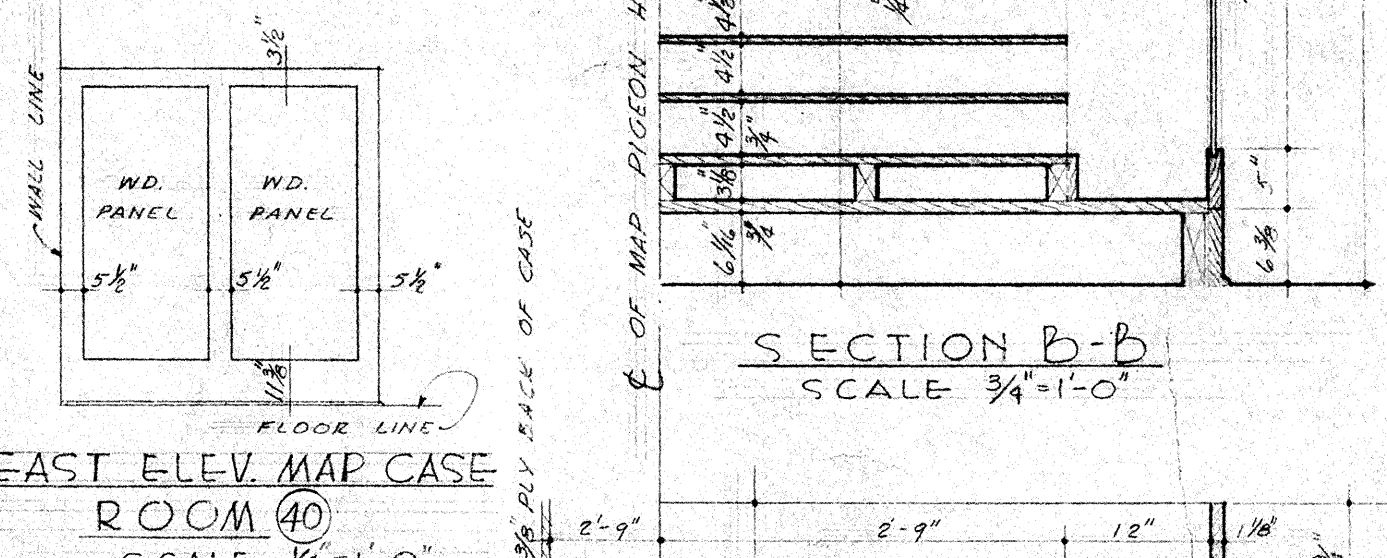


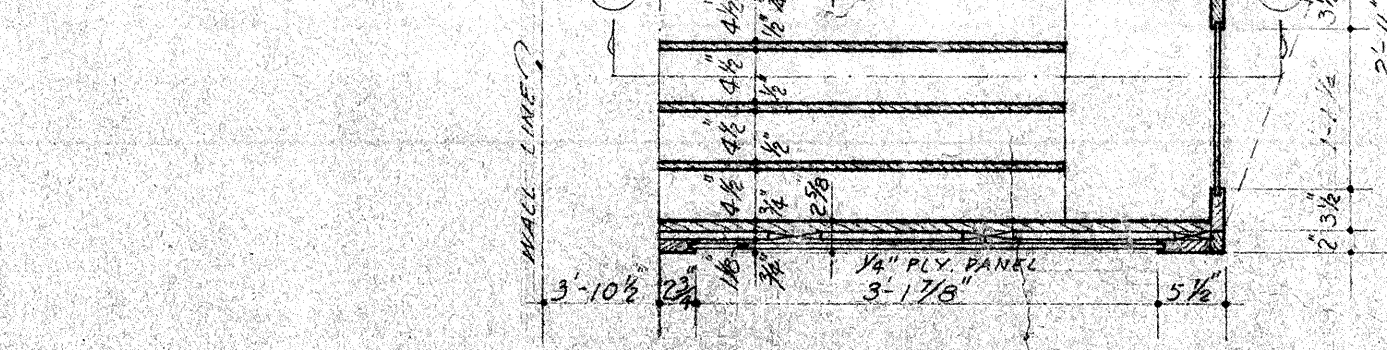
NORTH ELEVATION EAST ELEVATION SOUTH ELEVATION WEST ELEVATION
 ELEVATIONS IN SCALE 1/4" = 1'-0"



SECTION A-A SCALE 3/4" = 1'-0"
 SECTION B-B SCALE 3/4" = 1'-0"



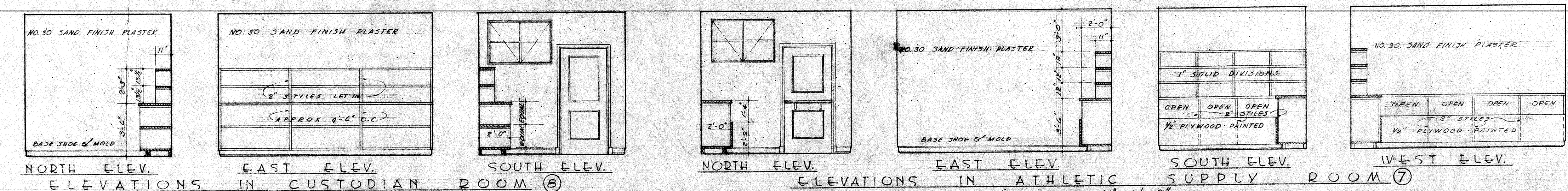
EAST ELEV. MAP CASE ROOM (40) SCALE 3/4" = 1'-0"



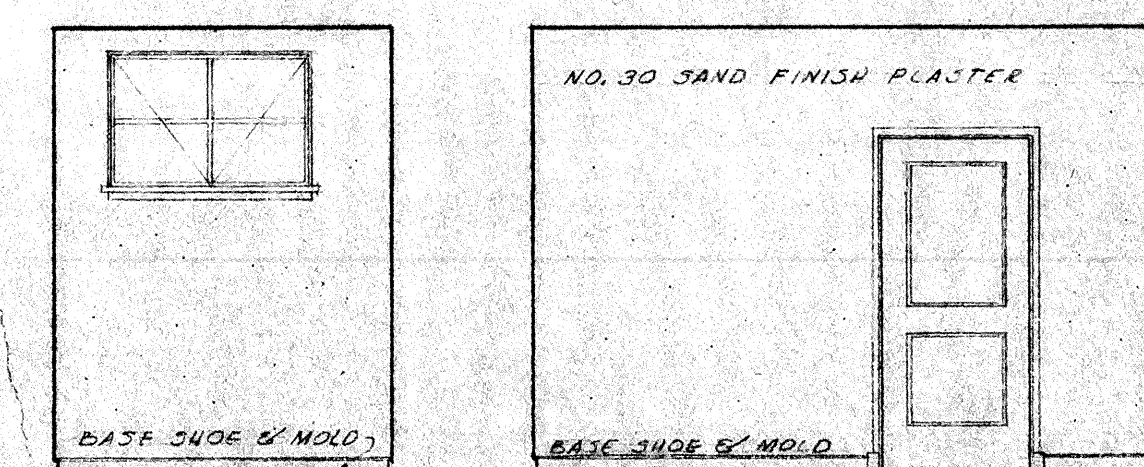
PART PLAN SCALE 3/4" = 1'-0"

MAP CASE IN BOOK & SUPPLY ROOM (40)

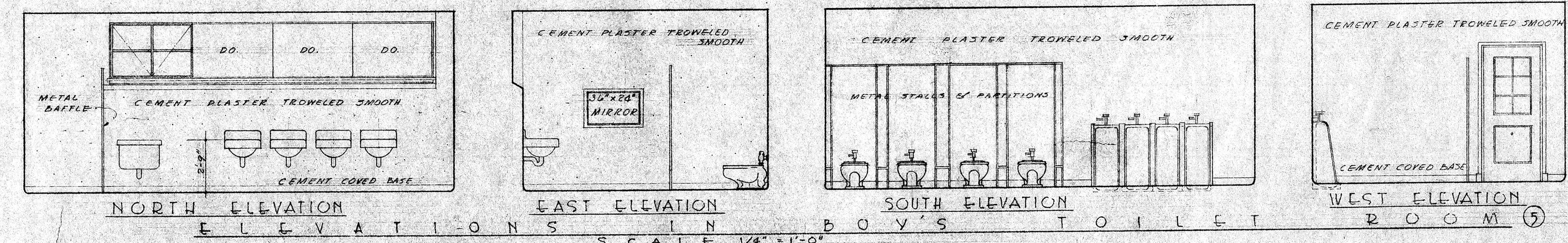
NOTE: ALL CABINETS TO BE ANCHORED TO WALL IN 100 LB. CAPAC. WALLS @ 24" O.C. ON 2" STUD OR BEARING.



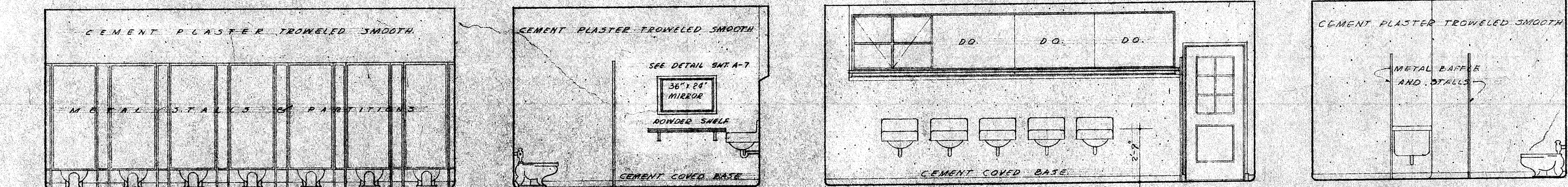
NORTH ELEV. EAST ELEV. SOUTH ELEV. NORTH ELEV. EAST ELEV. SOUTH ELEV. WEST ELEV.
 ELEVATIONS IN CUSTODIAN ROOM (6) ELEVATIONS IN ATHLETIC SUPPLY ROOM (7) SCALE 1/4" = 1'-0"



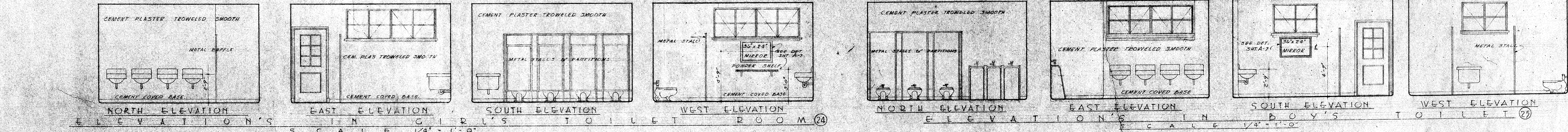
SOUTH ELEV. WEST ELEV. ELEVATION IN CUSTODIAN ROOM (6) SCALE 1/4" = 1'-0"



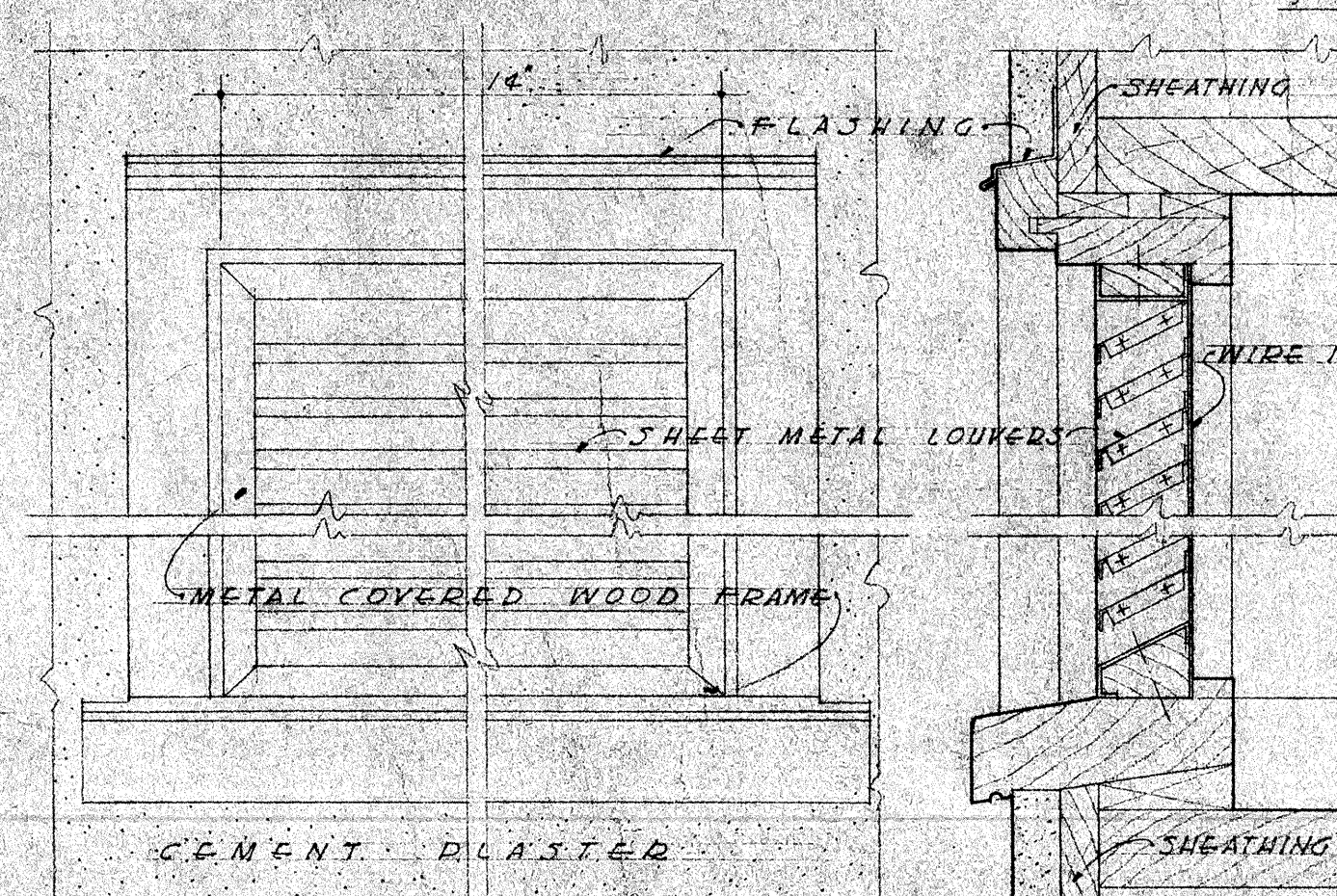
NORTH ELEVATION EAST ELEVATION SOUTH ELEVATION WEST ELEVATION
 ELEVATIONS IN SCALE 1/4" = 1'-0"



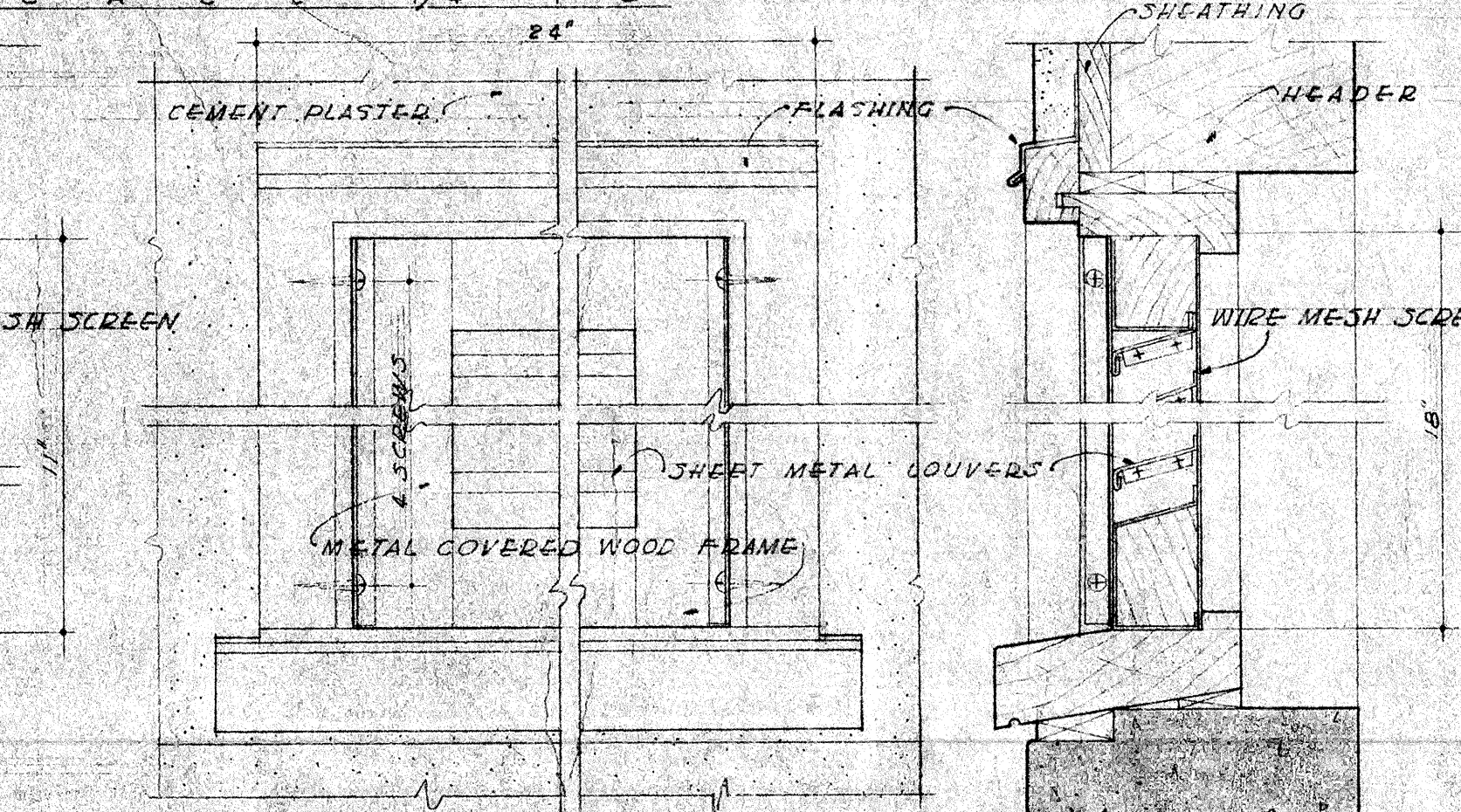
NORTH ELEVATION EAST ELEVATION SOUTH ELEVATION WEST ELEVATION
 ELEVATIONS IN SCALE 1/4" = 1'-0"



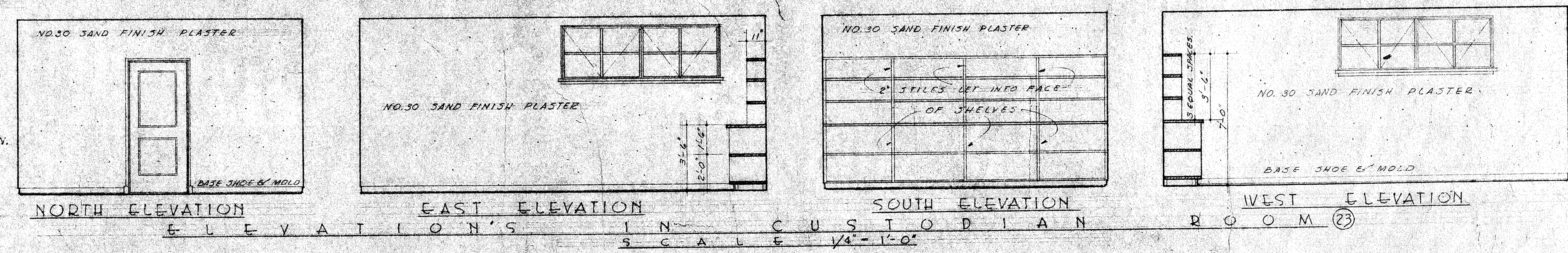
NORTH ELEVATION EAST ELEVATION SOUTH ELEVATION WEST ELEVATION NORTH ELEVATION EAST ELEVATION SOUTH ELEVATION WEST ELEVATION
 ELEVATIONS IN GIRLS' TOILET ROOM (24) ELEVATIONS IN BOYS' TOILET (27) SCALE 1/4" = 1'-0"



ELEVATION SECTION LOUVERED FOUNDATION VENT DETAIL SCALE 3" = 1'-0"



ELEVATION SECTION ACCESS DOOR FOR UNDER STAGE AREA SCALE 3" = 1'-0"



NORTH ELEVATION EAST ELEVATION SOUTH ELEVATION WEST ELEVATION
 ELEVATIONS IN SCALE 1/4" = 1'-0"

STATE OF CALIFORNIA DEPARTMENT OF PUBLIC WORKS DIVISION OF ARCHITECTURE	BAKERSFIELD CITY SCHOOLS 1600 K ST. BAKERSFIELD CALIF. BOARD OF EDUCATION APPROVED 7/22 1948 PRESIDENT SECRETARY	ELEMENTARY SCHOOL BAKERSFIELD CITY SCHOOL DISTRICT PIONEER DRIVE BAKERSFIELD CALIFORNIA ERNEST C. MOY A.I.A. ARCHITECT	DATE 4/7/48 DRAWN BY R.H.G. CHECKED BY SHEET NO. 6-352 12 OF 12 SHEETS
APPROVED 7-22-48 5743 Harry W. Bolin		135 HAY BLDG. BAKERSFIELD	1612 19th ST. CALIFORNIA

Check and verify all dimensions before proceeding with the work. Report any discrepancies to Architect.