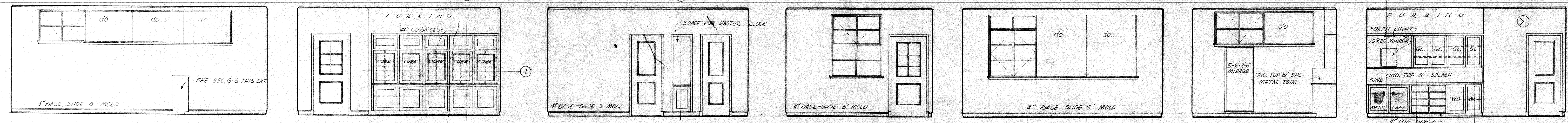
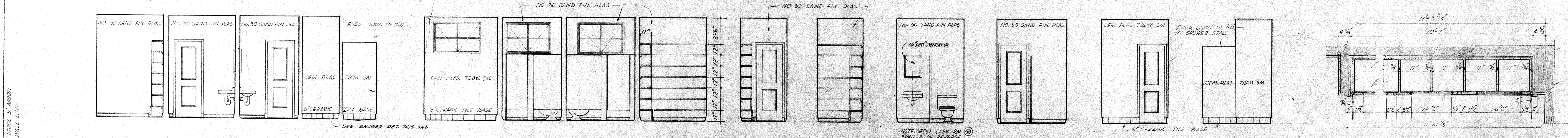


NORTH ELEVATION ENTRY (52) S' GENERAL OFF (53) WEST ELEVATION GENERAL OFF (53) NORTH ELEVATION PRINCIPAL'S OFF (54) WEST ELEVATION PRINCIPAL'S OFF (54) SOUTH ELEVATION PRINCIPAL'S OFF (54) NORTH ELEVATION VESTIBULE (57) EAST ELEVATION VESTIBULE (57) SOUTH ELEVATION VESTIBULE (57) WEST ELEVATION VESTIBULE (57)

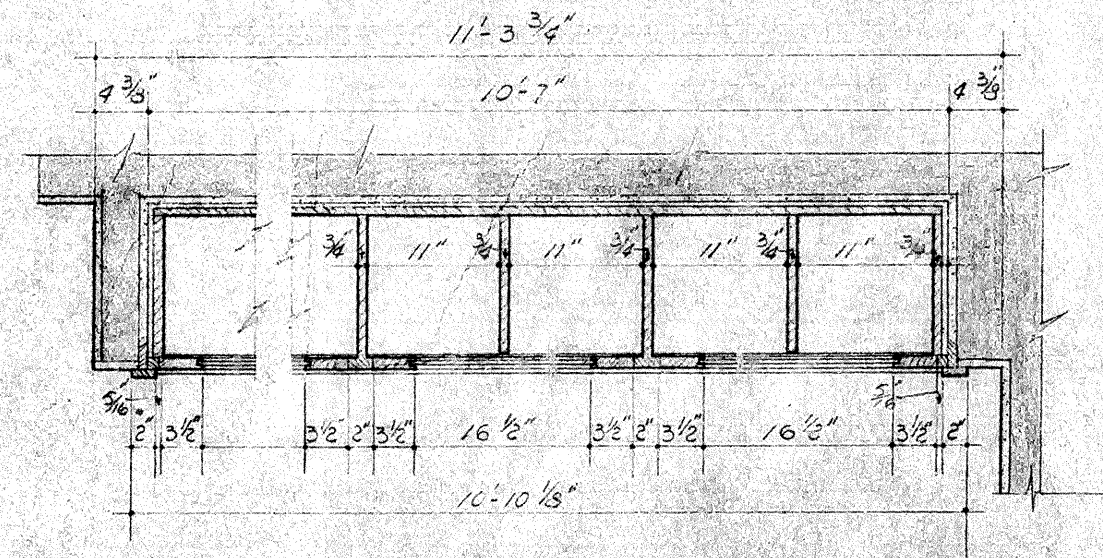


SOUTH ELEVATION ENTRY (52) S' GENERAL OFF (53) WEST ELEVATION ENTRY (52) EAST ELEVATION GENERAL OFF (53) NORTH ELEVATION HEALTH ROOM (60) EAST ELEVATION HEALTH ROOM (60) SOUTH ELEVATION HEALTH ROOM (60) WEST ELEVATION HEALTH ROOM (60)

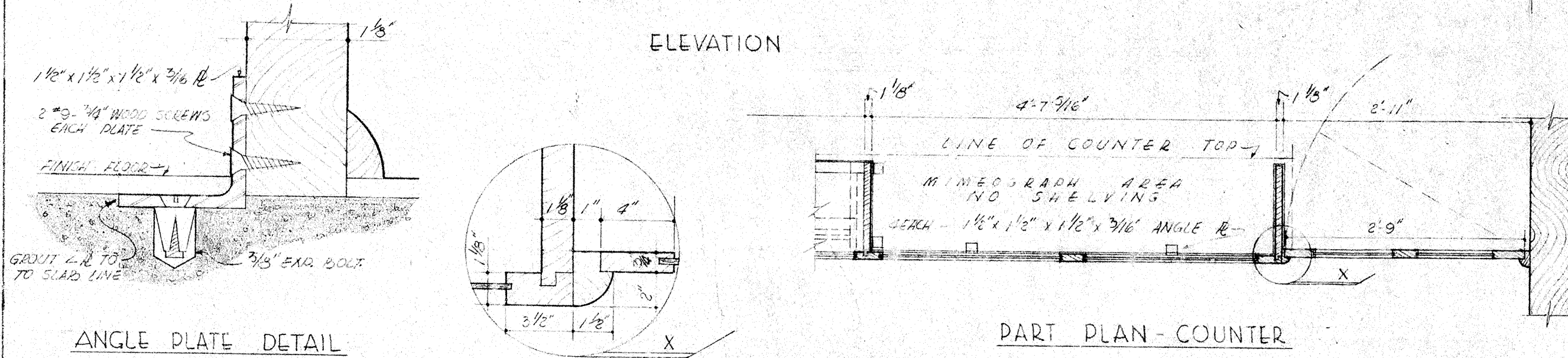
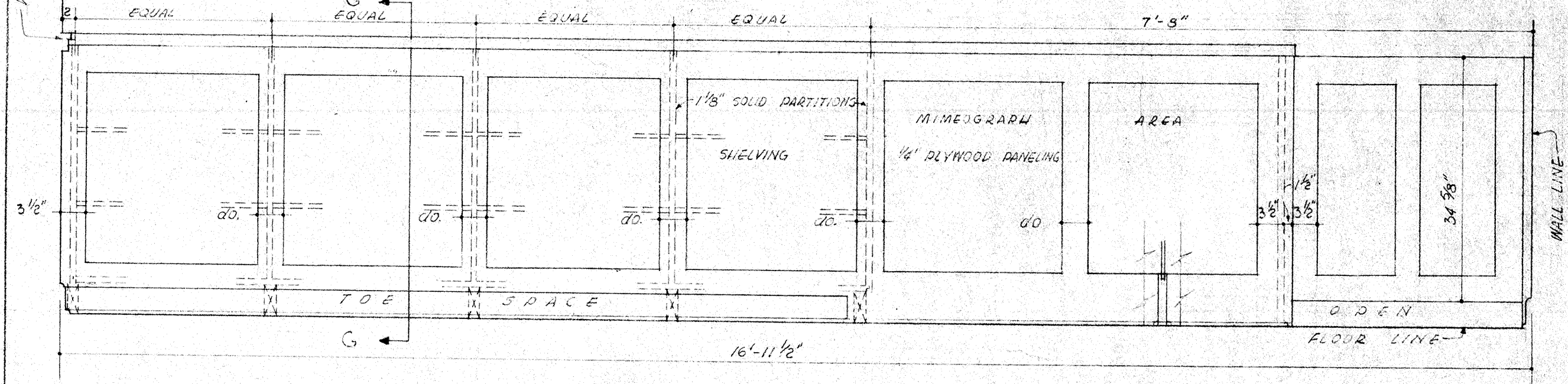


NORTH ELEVATION (55) (56) (58) (59) SOUTH ELEVATION (59) (53) (56) (53) WEST ELEV (55) EAST ELEV (55) EAST ELEV (56) EAST ELEV (58) WEST ELEV (59) EAST ELEV (59)

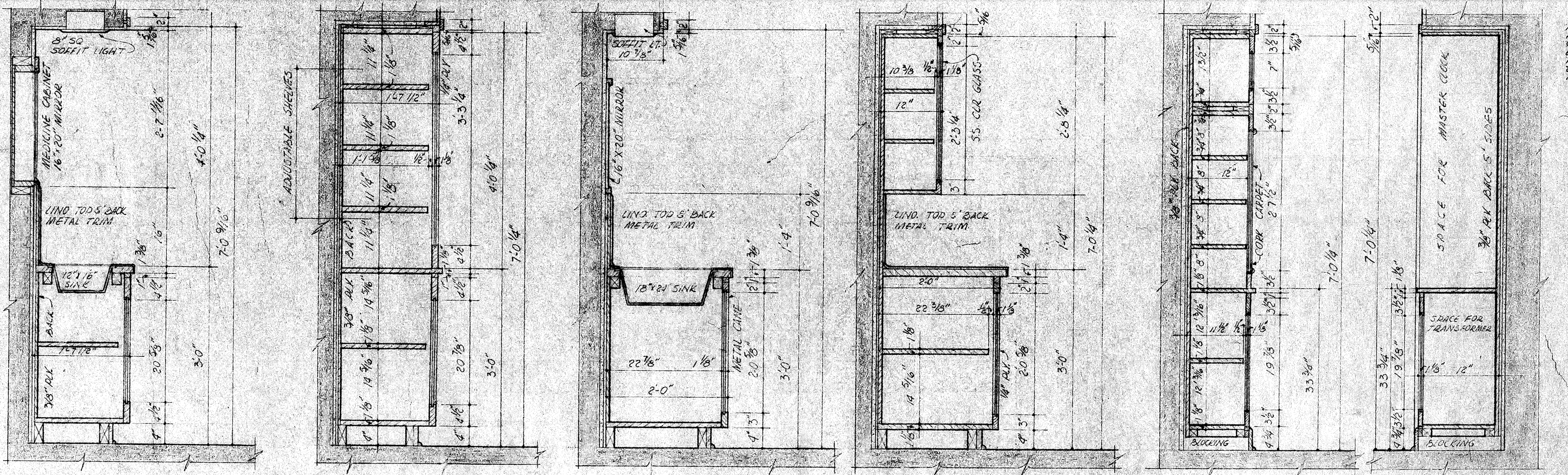
ROOM ELEVATIONS ADMINISTRATION UNIT  
SCALE 1/4" = 1'-0"



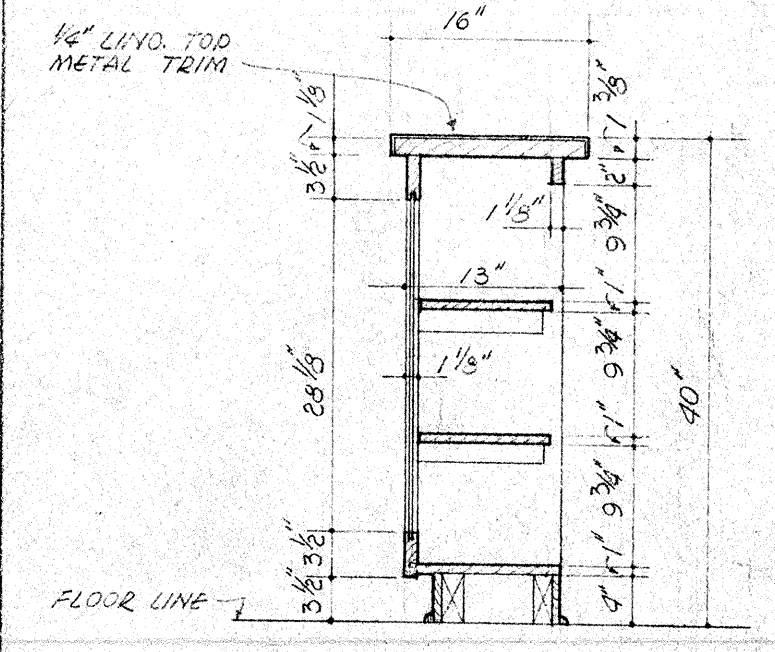
PLAN - SEC I-I  
CABINET DETAIL - ENTRY (52)  
SCALE 3/4" = 1'-0"



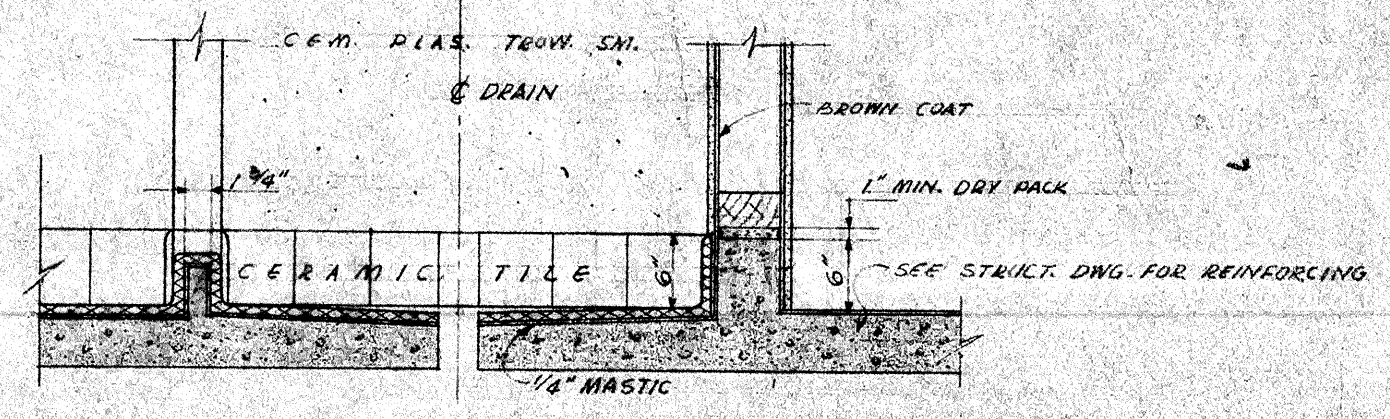
COUNTER DETAIL - ENTRY (52) S' GENERAL OFFICE (53)  
SCALE 3/4" = 1'-0"



SEC. A-A SEC. H-H SEC. C-C SEC. D-D SEC. E-E SEC. F-F  
CABINET SECTIONS - VESTIBULE (57) S' HEALTH RM. (60)  
SCALE 3/4" = 1'-0"



SECTION "G-G"



SEC THRU SHOWER FLOOR - ROOM (59)  
SCALE 3/4" = 1'-0"

Check and verify all dimensions before proceeding with the work. Report any discrepancies to architect.

STATE OF CALIFORNIA DEPARTMENT OF PUBLIC WORKS DIVISION OF ARCHITECTURE APPROVED: <i>Harvey W. Babin</i> 5743	BAKERSFIELD CITY SCHOOLS 1600 ST. BAKERSFIELD CALIF. BOARD OF EDUCATION APPROVED: <i>Ernest L. McCoy</i> 7-22-48 PRESIDENT SECRETARY	ELEMENTARY SCHOOL BAKERSFIELD CITY SCHOOL DISTRICT PIONEER DRIVE BAKERSFIELD CALIFORNIA ERNEST L. MCCOY AIA ARCHITECT 155 HAN BLDG. BAKERSFIELD 1612 19th ST. CALIFORNIA	DATE: 7-22-48 DRAWN BY: U.F.L. CHECKED BY: [Signature] SHEET NO. 11 OF 16 SHEETS
---	--	---	--