

GENERAL

GENERAL DETAILS AND NOTES SHALL APPLY IN ALL CASES UNLESS SPECIFICALLY SHOWN OTHERWISE ON THE DRAWINGS. WHERE NO DETAILS IS SHOWN, CONSTRUCTION SHALL BE IN ACCORDANCE WITH THE BUILDING DEPARTMENT SPECIFICATIONS AND THE CONTRACT SHALL BE THE BASIS OF THE CONSTRUCTION.

STRUCTURAL DRAWINGS SHALL BE USED IN CONJUNCTION WITH ARCHITECTURAL, ELECTRICAL AND MECHANICAL DRAWINGS. ALL DIMENSIONS SHALL BE TAKEN TO THE CENTER UNLESS OTHERWISE SPECIFIED ON THE DRAWINGS. ALL DIMENSIONS SHALL BE TAKEN TO THE CENTER UNLESS OTHERWISE SPECIFIED ON THE DRAWINGS.

ALL WORK SHALL BE PERFORMED UNDER CONTINUOUS SUPERVISION AND ALL WORK SHALL BE APPROVED BY THE ARCHITECT PRIOR TO PROCEEDING.

THE CONTRACTOR SHALL:

- VERIFY ALL (B) EXISTING CONDITIONS AND DIMENSIONS AND REPORT ANY DIFFERENCES IN WRITTEN FORM TO THE ARCHITECT PRIOR TO PROCEEDING.
- PROTECT ALL EXISTING UTILITIES AND REMAINING STRUCTURE.
- PROTECT ALL WORK AND RECEIVE ALL TESTS AND INSPECTIONS IN ACCORDANCE WITH THE BUILDING DEPARTMENT SPECIFICATIONS AND THE CONTRACT.
- BE SOLELY RESPONSIBLE FOR CONDITIONS AT THE JOB SITE, INCLUDING SAFETY OF ALL PERSONS AND PROPERTY.

PERFORM ALL DEMOLITION, REMOVAL AND DISPOSAL IN CONFORMANCE WITH ALL APPLICABLE LAWS, ORDINANCES, RULES AND REGULATIONS. EXCESS MATERIAL SHALL BE REMOVED FROM THE SITE AND DISPOSED OF OFF SITE UNLESS OTHERWISE DIRECTED BY THE ARCHITECT.

ALL WORK SHALL BE PERFORMED UNDER CONTINUOUS SUPERVISION.

ALL WORK SHALL BE APPROVED BY THE ARCHITECT PRIOR TO PROCEEDING.

FOUNDATIONS

FOOTINGS AND SLABS SHALL BE PLACED ONLY ON FIRM BEARING AND NOT ON LOOSE SOIL OR UNCOMPACTED FILL. FOUNDATION TO BE REMOVED OR REWORKED SHALL BE RECONSTRUCTED TO MEET THE FOLLOWING SPECIFICATIONS:

BASE ALLOWABLE BEARING RESISTANCE SHALL BE IN ACCORDANCE WITH THE BUILDING DEPARTMENT SPECIFICATIONS.

CONCRETE SHALL BE PLACED AND CURED IN ACCORDANCE WITH THE BUILDING DEPARTMENT SPECIFICATIONS.

REINFORCING STEEL

MATERIALS SHALL BE GRADE 40, CONTINGUOUS, PERFORMED AS PER ASTM A617, SPECIFICATION FOR REINFORCING STEEL. ALL REINFORCING STEEL SHALL BE PLACED IN ACCORDANCE WITH THE BUILDING DEPARTMENT SPECIFICATIONS.

CONCRETE

MATERIALS SHALL CONFORM TO THE FOLLOWING SPECIFICATIONS:

WATER:.....ASTM C150
 AGGREGATES (FINE & COARSE):.....ASTM C33
 ADMIXTURES (TYPE A, WATER REDUCING):.....ASTM C494
 CURING COMPOUND:.....ASTM C109
 CONCRETE:.....ASTM C110
 AIR ENTRAINING ADJ.:.....ASTM C773
 VAPOR BARRIER:.....ASTM E174

CONCRETE MIX AND CONSTRUCTION SHALL CONFORM TO THE FOLLOWING:

ALL CONCRETE (U.N.O.): TYPE II, NORMAL WEIGHT (145 LBS)
 MINIMUM ULTIMATE COMPRESSIVE STRENGTH & 28 DAYS:.....3200 PSI
 MAXIMUM AGGREGATE SIZE:.....1 1/2 INCHES
 MAXIMUM SLOPE:.....5%
 MAXIMUM WATER/CEMENT RATIO:......53 (6.5 GAL/BUCK)
 COMPACTOR SHALL SUBMIT THE CONCRETE DESIGN MIX, APPROVED BY A CALIFORNIA LICENSED CIVIL ENGINEER, TO THE ARCHITECT FOR REVIEW 15 WORKING DAYS PRIOR TO CONCRETE PLACEMENT.

PROOF LOAD TESTS FOR EXPANSION TYPE ANCHOR BOLTS:

ALL CONCRETE ANCHOR BOLTS OF THE EXPANSION TYPE (LOADED IN EITHER TENSION OR SHEAR) SHALL HAVE 50 PERCENT OF THE BOLTS (ALTERNATE BOLTS IN ANY GROUP) TESTED TO PROVE THE IMMEDIATELY ADJACENT BOLTS MUST HAVE ALSO BE TESTED. ALL BOLTS MUST HAVE I.C.B.O. APPROVAL.

MATERIALS	TYPE OF TEST	TEST METHOD	TEST RESULTS
PORTLAND CEMENT	TEST	ASTM C150	3200 PSI
AGGREGATE	TEST	ASTM C33	1 1/2 INCHES
CONCRETE	TEST	ASTM C110	3200 PSI
ADMIXTURE	TEST	ASTM C494	5% SLOPE
CURING COMPOUND	TEST	ASTM C109	.53 W/C RATIO

REINFORCING STEEL

MATERIALS SHALL BE GRADE 40, CONTINGUOUS, PERFORMED AS PER ASTM A617, SPECIFICATION FOR REINFORCING STEEL. ALL REINFORCING STEEL SHALL BE PLACED IN ACCORDANCE WITH THE BUILDING DEPARTMENT SPECIFICATIONS.

CONCRETE

MATERIALS SHALL CONFORM TO THE FOLLOWING SPECIFICATIONS:

WATER:.....ASTM C150
 AGGREGATES (FINE & COARSE):.....ASTM C33
 ADMIXTURES (TYPE A, WATER REDUCING):.....ASTM C494
 CURING COMPOUND:.....ASTM C109
 CONCRETE:.....ASTM C110
 AIR ENTRAINING ADJ.:.....ASTM C773
 VAPOR BARRIER:.....ASTM E174

REINFORCING STEEL

MATERIALS SHALL BE GRADE 40, CONTINGUOUS, PERFORMED AS PER ASTM A617, SPECIFICATION FOR REINFORCING STEEL. ALL REINFORCING STEEL SHALL BE PLACED IN ACCORDANCE WITH THE BUILDING DEPARTMENT SPECIFICATIONS.

CONCRETE

MATERIALS SHALL CONFORM TO THE FOLLOWING SPECIFICATIONS:

WATER:.....ASTM C150
 AGGREGATES (FINE & COARSE):.....ASTM C33
 ADMIXTURES (TYPE A, WATER REDUCING):.....ASTM C494
 CURING COMPOUND:.....ASTM C109
 CONCRETE:.....ASTM C110
 AIR ENTRAINING ADJ.:.....ASTM C773
 VAPOR BARRIER:.....ASTM E174

REINFORCING STEEL

MATERIALS SHALL BE GRADE 40, CONTINGUOUS, PERFORMED AS PER ASTM A617, SPECIFICATION FOR REINFORCING STEEL. ALL REINFORCING STEEL SHALL BE PLACED IN ACCORDANCE WITH THE BUILDING DEPARTMENT SPECIFICATIONS.

CONCRETE

MATERIALS SHALL CONFORM TO THE FOLLOWING SPECIFICATIONS:

WATER:.....ASTM C150
 AGGREGATES (FINE & COARSE):.....ASTM C33
 ADMIXTURES (TYPE A, WATER REDUCING):.....ASTM C494
 CURING COMPOUND:.....ASTM C109
 CONCRETE:.....ASTM C110
 AIR ENTRAINING ADJ.:.....ASTM C773
 VAPOR BARRIER:.....ASTM E174

REINFORCING STEEL

MATERIALS SHALL BE GRADE 40, CONTINGUOUS, PERFORMED AS PER ASTM A617, SPECIFICATION FOR REINFORCING STEEL. ALL REINFORCING STEEL SHALL BE PLACED IN ACCORDANCE WITH THE BUILDING DEPARTMENT SPECIFICATIONS.

CONCRETE

MATERIALS SHALL CONFORM TO THE FOLLOWING SPECIFICATIONS:

WATER:.....ASTM C150
 AGGREGATES (FINE & COARSE):.....ASTM C33
 ADMIXTURES (TYPE A, WATER REDUCING):.....ASTM C494
 CURING COMPOUND:.....ASTM C109
 CONCRETE:.....ASTM C110
 AIR ENTRAINING ADJ.:.....ASTM C773
 VAPOR BARRIER:.....ASTM E174

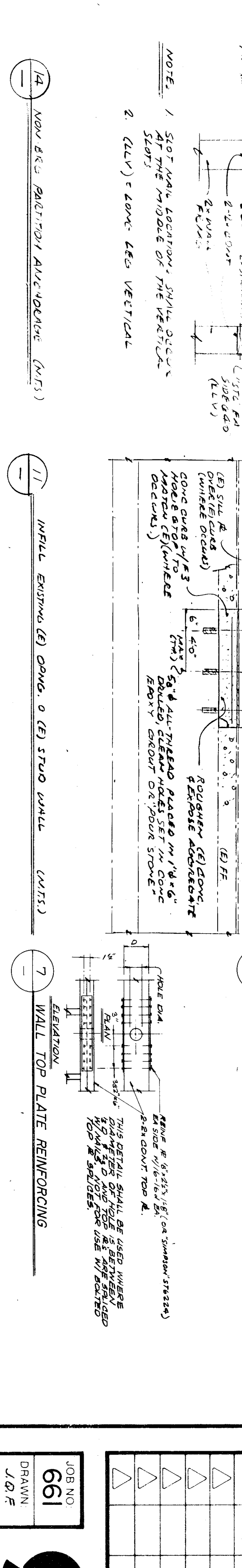
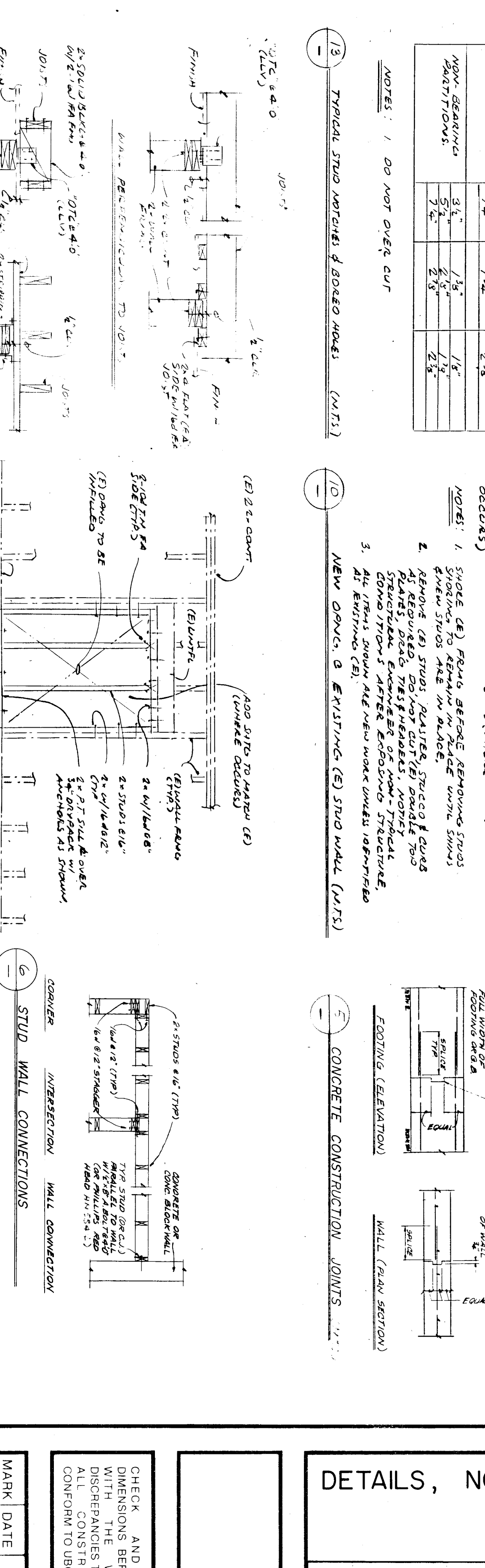
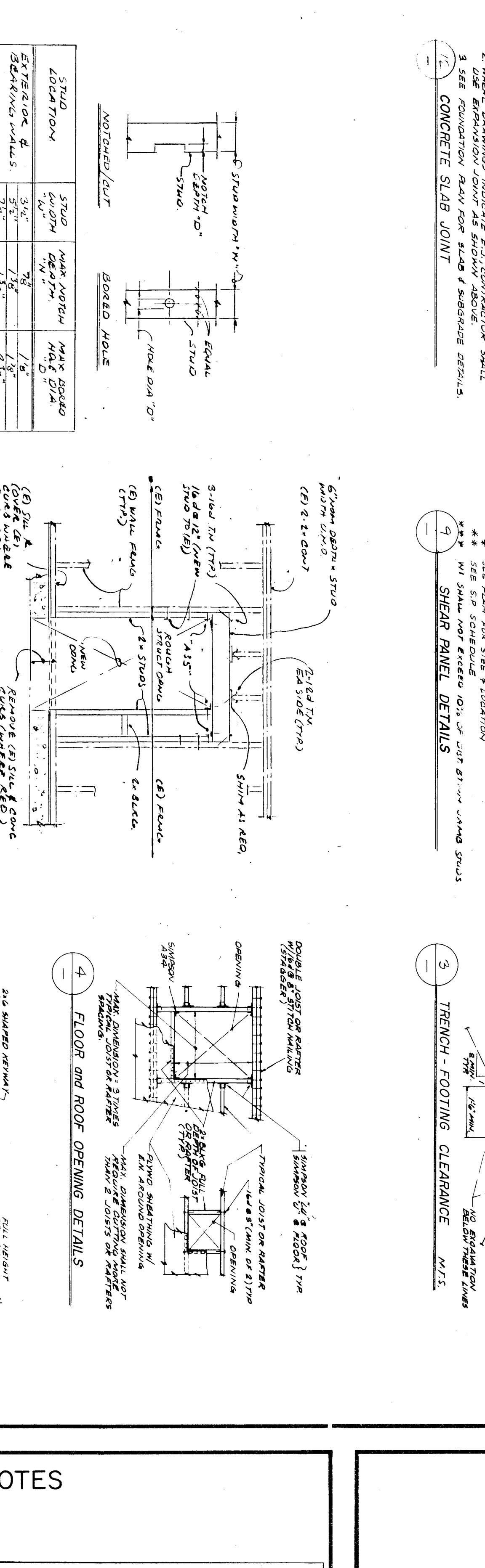
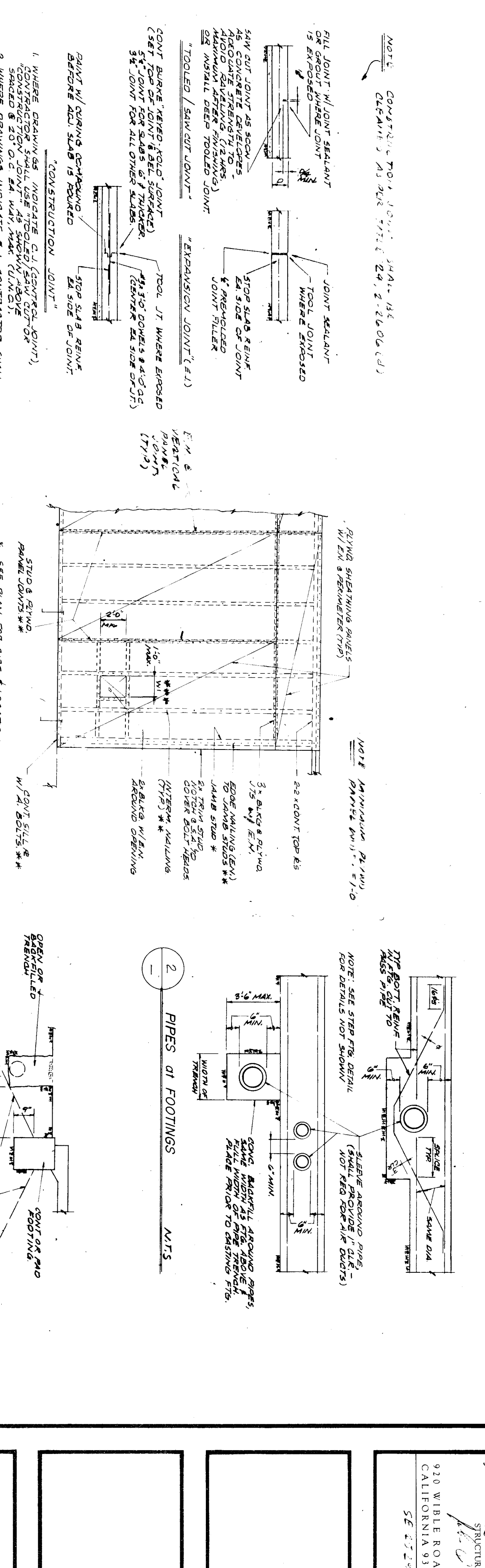
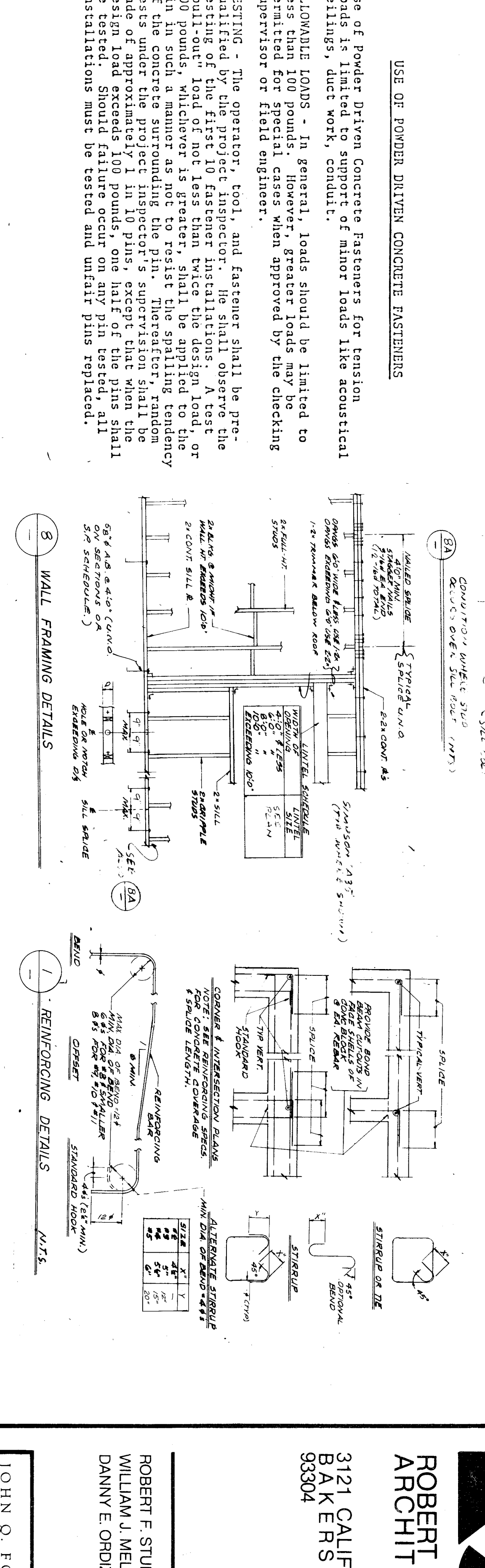
REINFORCING STEEL

MATERIALS SHALL BE GRADE 40, CONTINGUOUS, PERFORMED AS PER ASTM A617, SPECIFICATION FOR REINFORCING STEEL. ALL REINFORCING STEEL SHALL BE PLACED IN ACCORDANCE WITH THE BUILDING DEPARTMENT SPECIFICATIONS.

CONCRETE

MATERIALS SHALL CONFORM TO THE FOLLOWING SPECIFICATIONS:

WATER:.....ASTM C150
 AGGREGATES (FINE & COARSE):.....ASTM C33
 ADMIXTURES (TYPE A, WATER REDUCING):.....ASTM C494
 CURING COMPOUND:.....ASTM C109
 CONCRETE:.....ASTM C110
 AIR ENTRAINING ADJ.:.....ASTM C773
 VAPOR BARRIER:.....ASTM E174



ROBERT F. STUHR ARCHITECT INC.

3121 CALIFORNIA AVE.
 BAKERSFIELD, CA 93304
 (805) 327-1632

ROBERT F. STUHR ARCHITECT INC.

JOHN Q. FORESTELLE
 PROJECT ARCHITECT
 921 W. BROADWAY
 BAKERSFIELD, CA 93304
 (805) 327-1632

ROBERT F. STUHR ARCHITECT INC.

JOHN Q. FORESTELLE
 PROJECT ARCHITECT
 921 W. BROADWAY
 BAKERSFIELD, CA 93304
 (805) 327-1632

DETAILS, NOTES

PIONEER DRIVE SCHOOL MODERNIZATION

BAKERSFIELD CITY SCHOOL DISTRICT

BAKERSFIELD, KERN COUNTY, CALIFORNIA

CHECK AND VERIFY ALL DIMENSIONS BEFORE PROCEEDING WITH THE WORK. REPORT ANY DISCREPANCIES TO THE ARCHITECT IMMEDIATELY. ALL WORK SHALL BE PERFORMED UNDER CONTINUOUS SUPERVISION AND ALL WORK SHALL BE APPROVED BY THE ARCHITECT PRIOR TO PROCEEDING.

MARK DATE REVISIONS

DATE

DATE

DATE

DATE