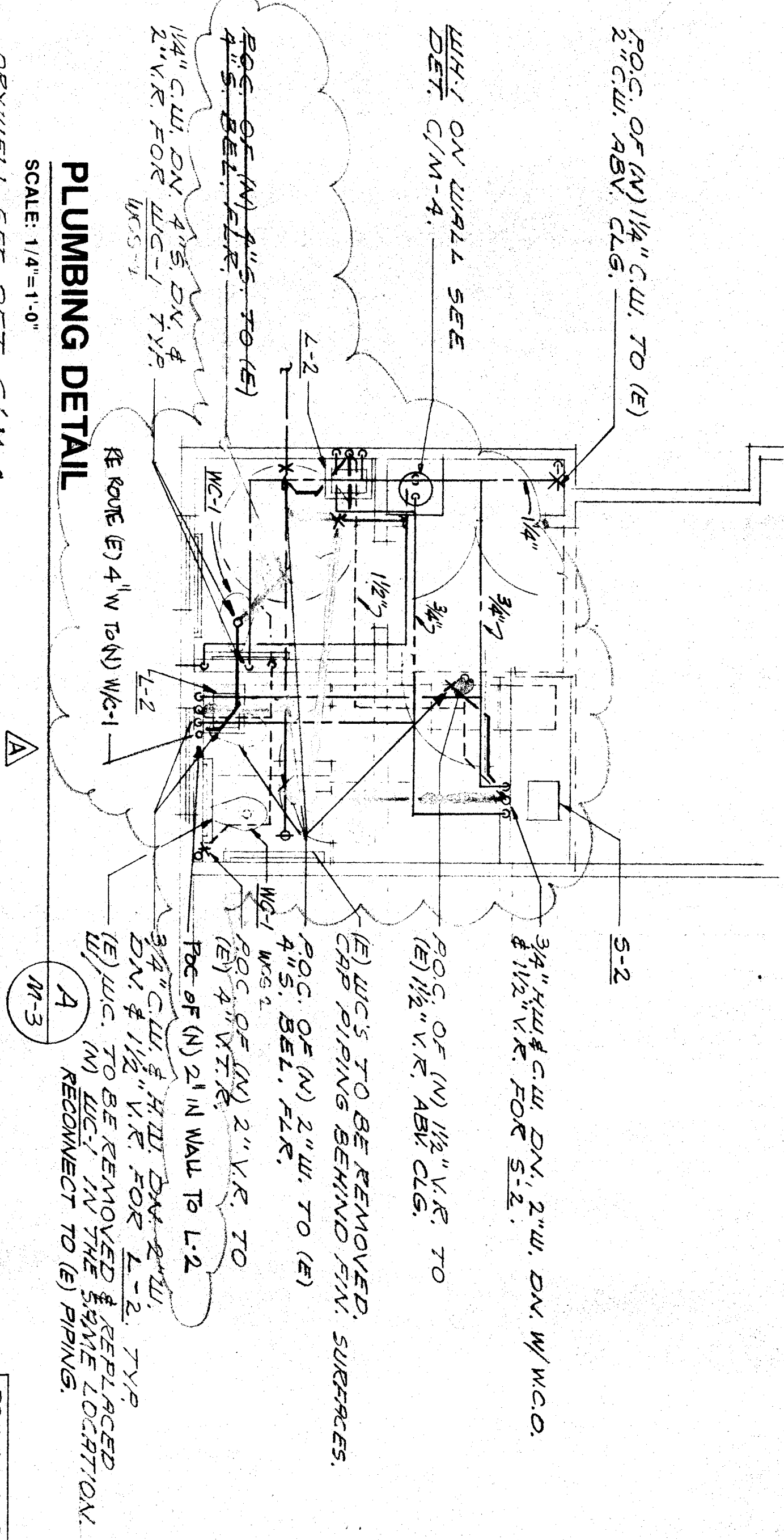
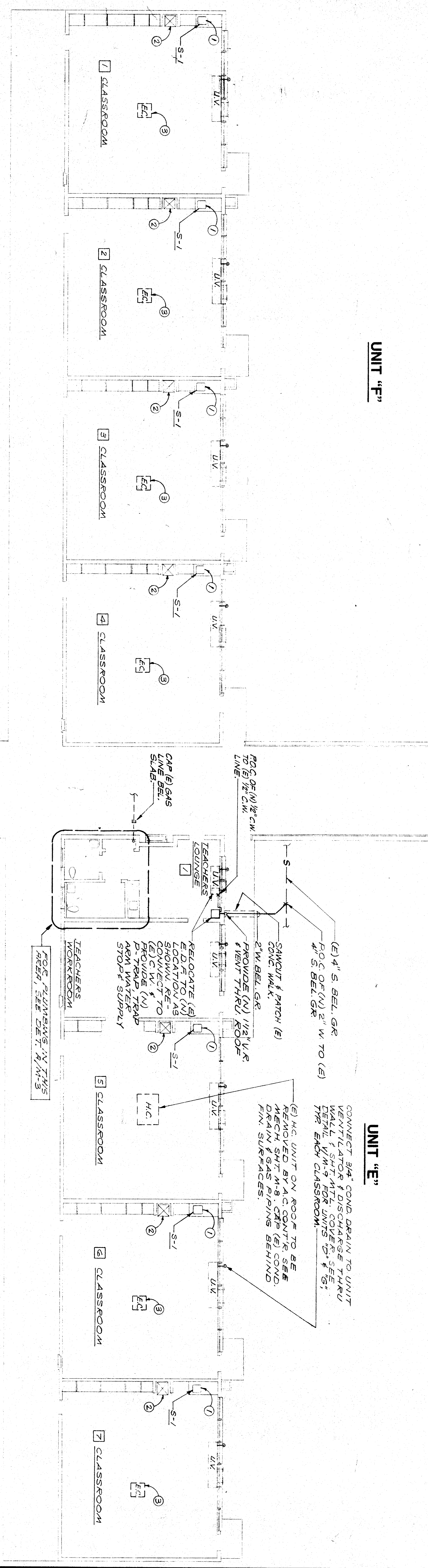
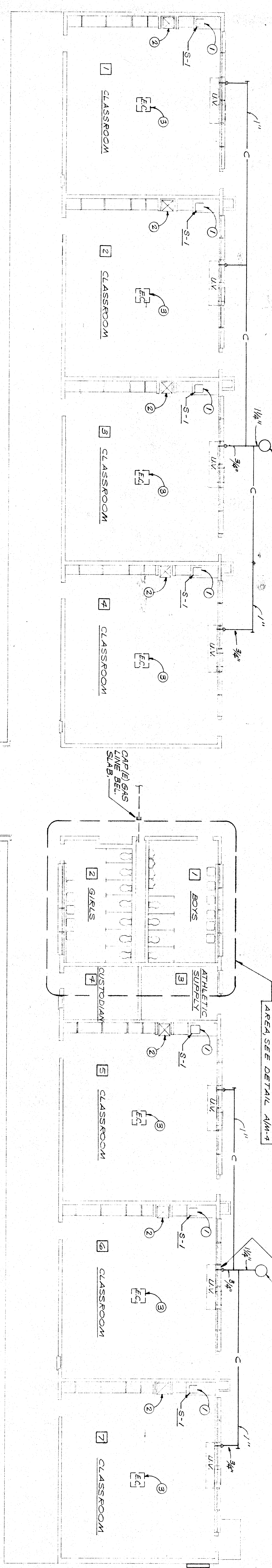


- KEYNOTES**
- EXISTING SINK TO BE REMOVED AND REGRATED WITH NEW S.I. IN THE SAME LOCATION. RECONNECT TO EXISTING PIPING IN UNIT. CAP EXISTING PIPING BEHIND FINISHED SURFACES. TYPICAL FOR S-1.
  - EXISTING SURFACE TO BE REMOVED. CAP GAS PIPING BEHIND FINISHED SURFACES.
  - EXISTING EVAPORATIVE COOLER ON ROOF TO BE REMOVED. CAP C.M. PIPING BACK TO SOURCE.

**NOTE:**  
 ALL KEY NOTE NUMBERS ON THIS SHEET REFER TO THE ITEMS ON THIS SHEET ONLY AND DO NOT APPLY TO THE NUMBERS SHOWN ELSEWHERE IN THIS SET OF PLANS.



**PLUMBING DETAIL**  
 SCALE: 1/4"=1'-0"



**UNIT 'G'**

**UNIT 'D'**

**UNIT 'F'**

**UNIT 'E'**

**PLUMBING PLAN**  
 SCALE: 1/8"=1'-0"



**ROBERT F. STUHR ARCHITECT INC.**  
 3121 CALIFORNIA AVE.  
 BAKERSFIELD CA  
 93304 (805) 327-1632

ROBERT F. STUHR AIA C-1610  
 WILLIAM J. MELBY AIA C-16885  
 DANNY E. OBRIZ AIA C-14728

**IDENTIFICATION STRONGBOX**  
 Official of the State Architect  
 State of California  
 Department of Industrial Relations, Incorporated  
 1000 'N' Street, Suite 28  
 Sacramento, CA 95833  
 DONALD R. LAWRENCE & ASSOCIATES  
 CONSULTING PROFESSIONAL ENGINEER, INCORPORATED  
 1900 'N' Street, Suite 28  
 Sacramento, CA 95833

**Structural Safety Engineering**  
 License No. 31021  
 1000 'N' Street, Suite 28  
 Sacramento, CA 95833

**Architectural**  
 License No. 5000  
 1000 'N' Street, Suite 28  
 Sacramento, CA 95833

31921 1013 SB  
 1000 'N' Street, Suite 28  
 Sacramento, CA 95833

**1/8" UNIT PLANS FOR 'D', 'E', 'F' & 'G'**  
**PIONEER DRIVE SCHOOL MODERNIZATION**  
**BAKERSFIELD CITY SCHOOL DISTRICT**  
 BAKERSFIELD, KERN COUNTY, CALIFORNIA

**'As Built'**

CHECK AND VERIFY ALL WORK AGAINST THE ARCHITECT'S REPORT AND DISCREPANCIES TO THE ARCHITECT SHALL BE CORRECTED TO THE ARCHITECT'S REPORT.

MARK	DATE	REVISIONS
△		
△		
△		

5442 1/8" COUPL

JOB NO.	
DRAWN:	GWZ/RS
CHECKED:	GWZ/RS
DATE:	02/27/02

**3**  
 OF 11 SHEETS