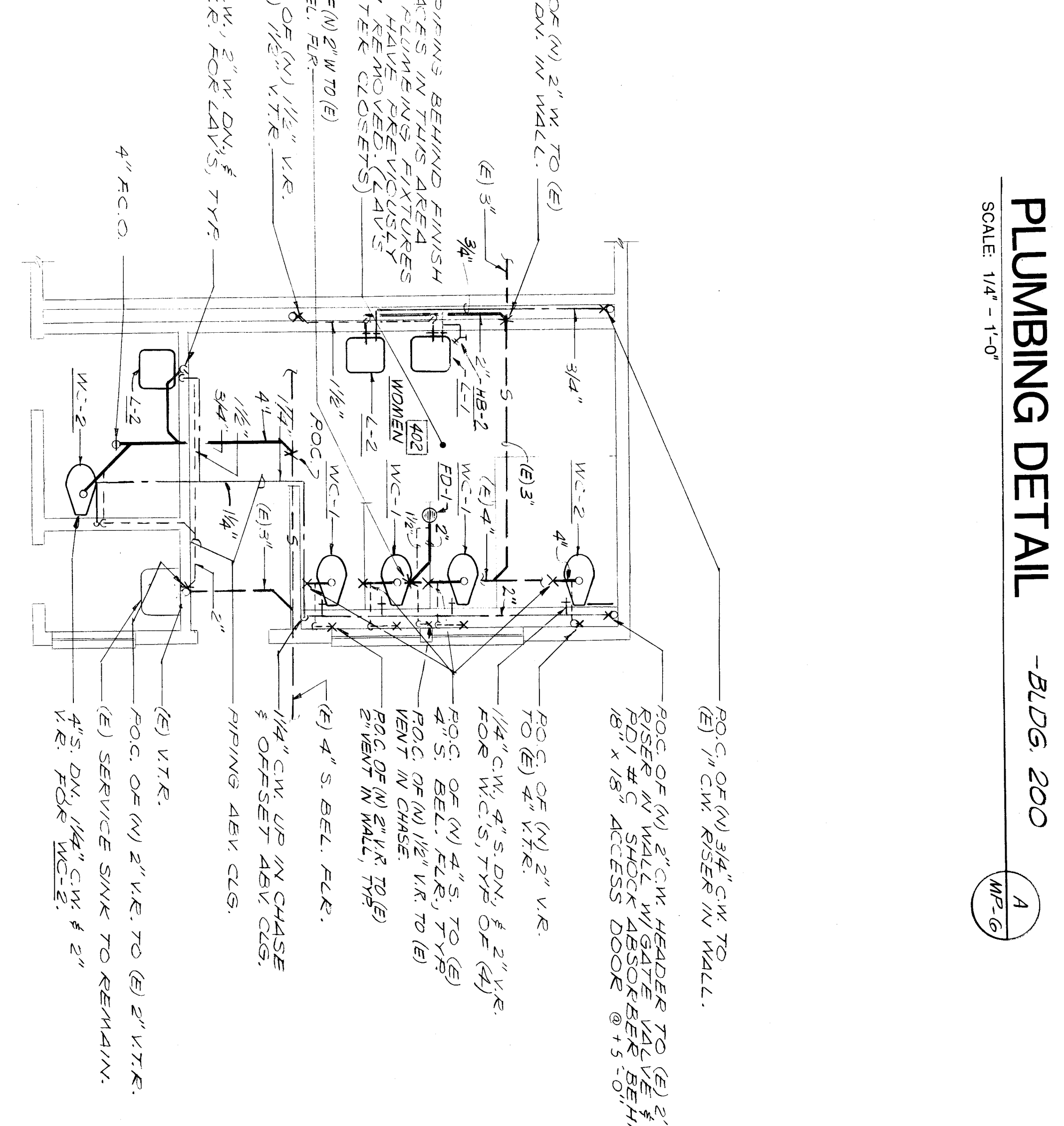
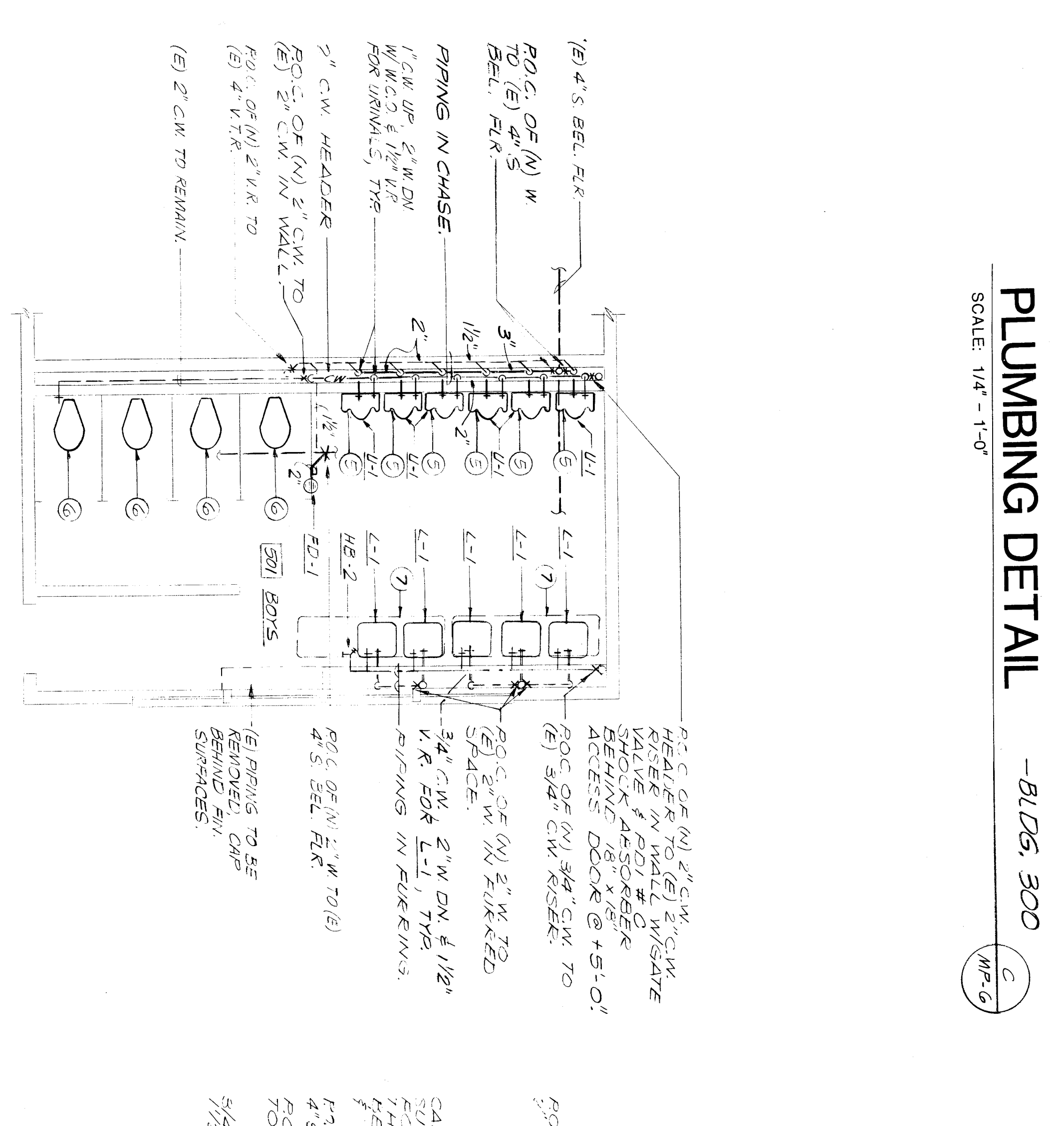
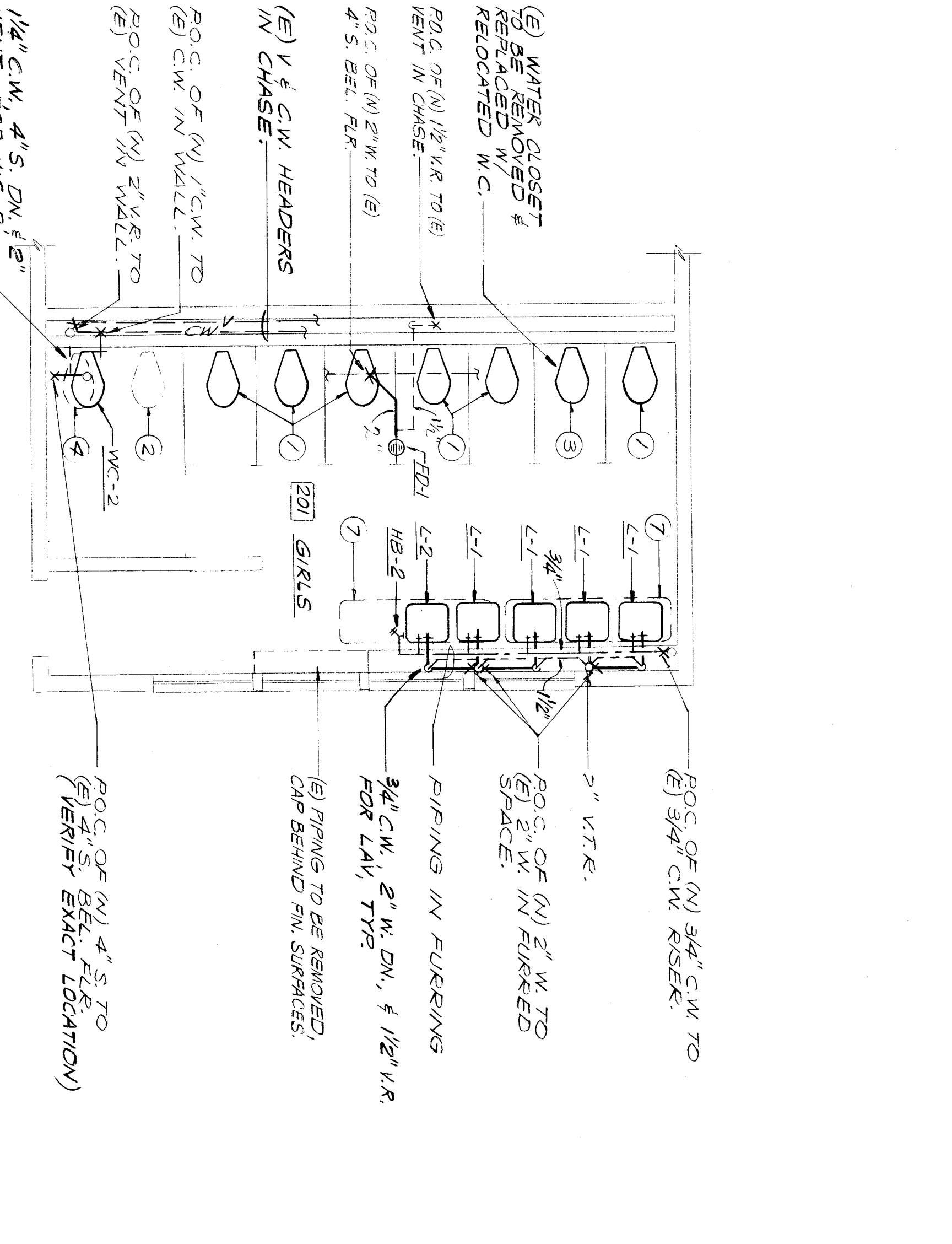
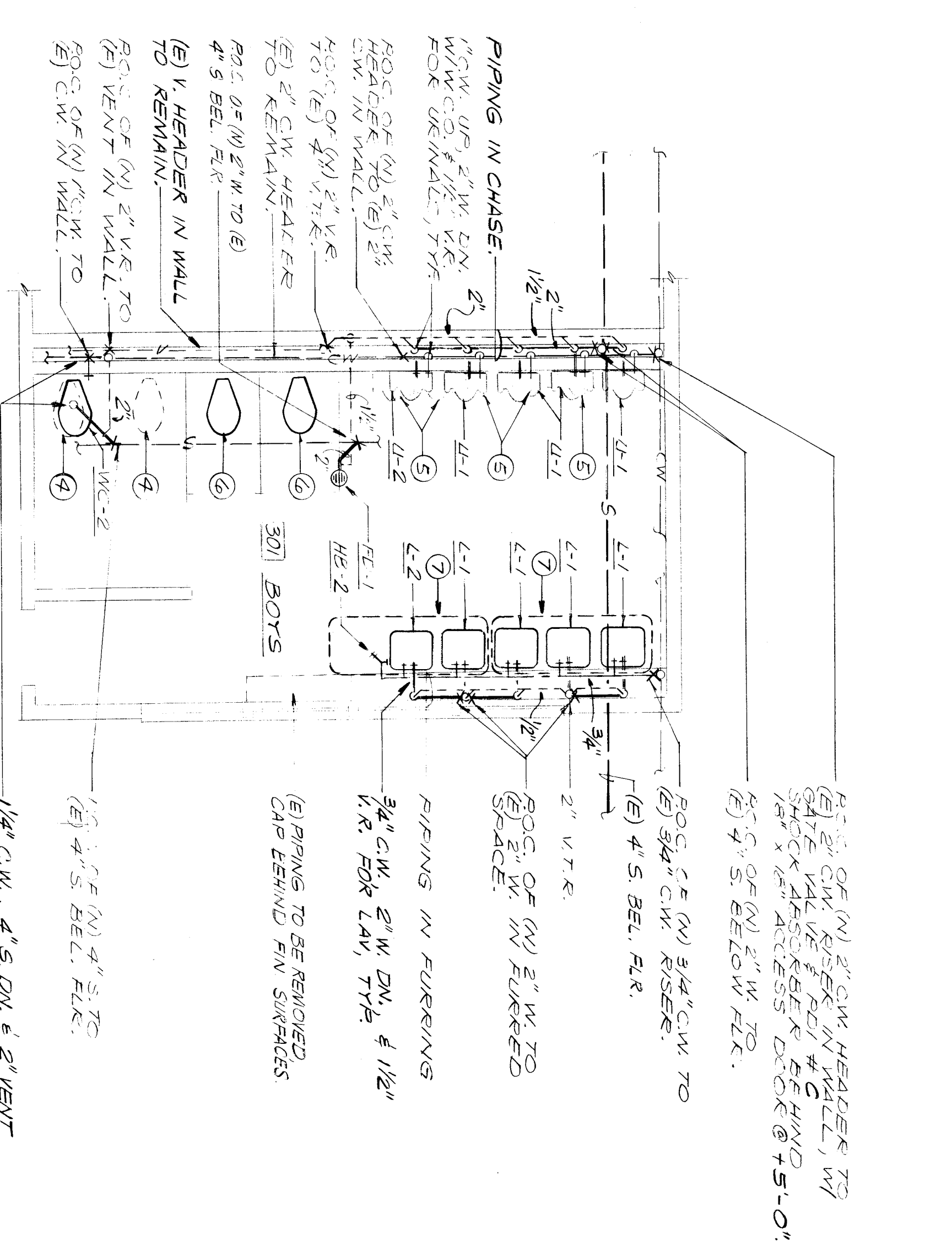


PLUMBING FIXTURE AND EQUIPMENT SCHEDULE					
MARK	FIXTURE	S OR N	CONNECTION SIZES	DESCRIPTION	
WC-1	WATER CLOSET	4"	2"	1"	AMERICAN STANDARD ELONGATED "WATER-SAVING" MODERN #4221, 018 W/ SLOAN "ROYAL" #110-3 FLUSH VALVE AND SLOANITE #9500-3 OPEN-FRONT SEAT.
WC-2	WATER CLOSET	4"	2"	1"	KOHLER ELONGATED "COMINGS" WATER-SAVING #4400-ET WITH LEFT SEAT FLUSH VALVE HANDLE AND SLOANITE #110-3 OPEN-FRONT SEAT.
L-1	LABORATORY	2"	1-1/2"	1/2"	AMERICAN STANDARD "NEW" LUCERNE #0356, 421, 20" X 18" W/ #411, 015 "TIP-TAP" SELF-CLOSING FACET INDEPED "C" AND JAY R. SMITH #700-2 SUPPORT CHARACTER, "ROCKET FACET" TO 5/8" OPEN FOR 10 SECONDS. MOUNT AT HANDICAP HEIGHT.
L-2	LABORATORY	2"	1-1/2"	1/2"	AMERICAN STANDARD "NEW" LUCERNE #0356, 421, 20" X 18" W/ #411, 015 "TIP-TAP" SELF-CLOSING FACET INDEPED "C" AND JAY R. SMITH #700-2 SUPPORT CHARACTER, "ROCKET FACET" TO 5/8" OPEN FOR 10 SECONDS. MOUNT AT HANDICAP HEIGHT.
U-1	URINAL	2"	1-1/2"	3/4"	AMERICAN STANDARD "YALBROOK" #4540, 017 WITH SLOAN "ROYAL" #110-3 FLUSH VALVE AND JAY R. SMITH #604 SUPPORT CHARACTER.
U-2	URINAL	2"	1-1/2"	1"	AMERICAN STANDARD "YALBROOK" #4540, 017 WITH SLOAN "ROYAL" #110-3 FLUSH VALVE AND JAY R. SMITH #604 SUPPORT CHARACTER.
FV-1	FLUSH VALVE	-	-	1"	SLOAN "ROYAL" #110-3 FLUSH VALVE.
WC-1	WATER CLOSET SEAT	-	-	-	DISMOUNT #9500 OPEN-FRONT SEAT
ST-1	SINK TRIM	-	-	1/2"	CHICAGO #530 SINGLE DECK MOUNTED SINK FITTING INDEXED TO #424-188 OF #424-188 AND CROSS HANDLE AND #23 SHIFTER AND #93 HANDLE.
L-1	LABORATORY TRIM	-	-	1/2"	CHICAGO #335-012 "TIP-TAP" SELF-CLOSING SINK FITTING INDEXED TO #424-188 OF #424-188 AND CROSS HANDLE AND #23 SHIFTER AND #93 HANDLE.
L-2	LABORATORY TRIM	-	-	1/2"	CHICAGO #335-012 "TIP-TAP" SELF-CLOSING SINK FITTING INDEXED TO #424-188 OF #424-188 AND CROSS HANDLE AND #23 SHIFTER AND #93 HANDLE.
ED-1	FLOOR DRAIN	2"	1/2"	-	JAY R. SMITH #201-01 WITH 5" SQUARE NICKEL BRONZE STRAINER.
UB-1	HOSE BIBB	-	-	3/4"	ACORN #1812 ROUGH BRONZE WALL HOSE VALVE W/ HANDLE - PROOF LOCK-SHIELD, VACUUM BREAKER, AND REMOVABLE HANDLE.
TP-1	TRAP PRIMER	-	-	1/2"	E AND S VALVE CO.
HB-2	HOSE BIBB	-	-	3/4"	CHICAGO #552 POLISHED CHROME W/ VACUUM BREAKER & REMOVABLE TIE HANDLE.

- KEYNOTES
- EXISTING WATER CLOSET TO BE REMOVED, SCRUBBED CLEAN AND RESET IN THE SAME LOCATION AFTER ALL ARCHITECTURAL WORK HAS BEEN COMPLETED.
 - EXISTING WATER CLOSET TO BE REMOVED AND RELOCATED. CAP PIPING BEHIND FINISH SURFACES.
 - NEW LOCATION OF EXISTING WATER CLOSET. SCRUB CLEAN AND RECONNECT TO EXISTING PIPING.
 - EXISTING FLOOR MOUNTED WATER CLOSET TO BE REMOVED. CAP PIPING BEHIND FINISH SURFACES.
 - EXISTING FLOOR MOUNTED URINAL TO BE REMOVED. CAP PIPING BEHIND FINISH SURFACES.
 - EXISTING WATER CLOSET TO BE REMOVED, SCRUBBED CLEAN AND RESET IN THE SAME LOCATION AFTER ALL ARCHITECTURAL WORK HAS BEEN COMPLETED. RECONNECT TO EXISTING PIPING. EX-1 AND SEAT WCS-1.
 - EXISTING TROUGH LABORATORY TO BE REMOVED. CAP PIPING BEHIND FINISH SURFACES.

- NOTES:
- PLUMBING CONTRACTOR TO VERIFY EXACT LOCATION AND DEPTH OF POINTS OF CONNECTION TO EXISTING UTILITIES.
 - MINIMUM DOMESTIC WATER PIPE SIZE TO BE 3/4" UNLESS NOTED OTHERWISE. USE A REDUCING ELL AT WALL IF NECESSARY.
 - ALL (B) PLUMBING FIXTURES WHICH ARE BEING REMOVED ARE TO BE DELIVERED TO THE SCHOOL DISTRICT.



Approved

DATE

DATE

Donald R. Lawrence & Associates
CONSULTING MECHANICAL ENGINEERS
1400 W. State Ave., Suite 302
Fresno, CA 93711
(509) 254-8101

C-1389
C-1312
C-1584

D.P. Arcinik

bigc inc.
architects planners
31 South Hill Road, Box 9494
Bakersfield, California 93309
805.832.8222

PLUMBING DETAILS & SCHEDULES
SCALE: 1/4" = 1'-0"
MT. VERNON MODERNIZATION
BAKERSFIELD CITY SCHOOL DISTRICT
2161 POTOMAC AVENUE
BAKERSFIELD, CALIFORNIA 93307

DATE
FEB 5 1991

MP-6