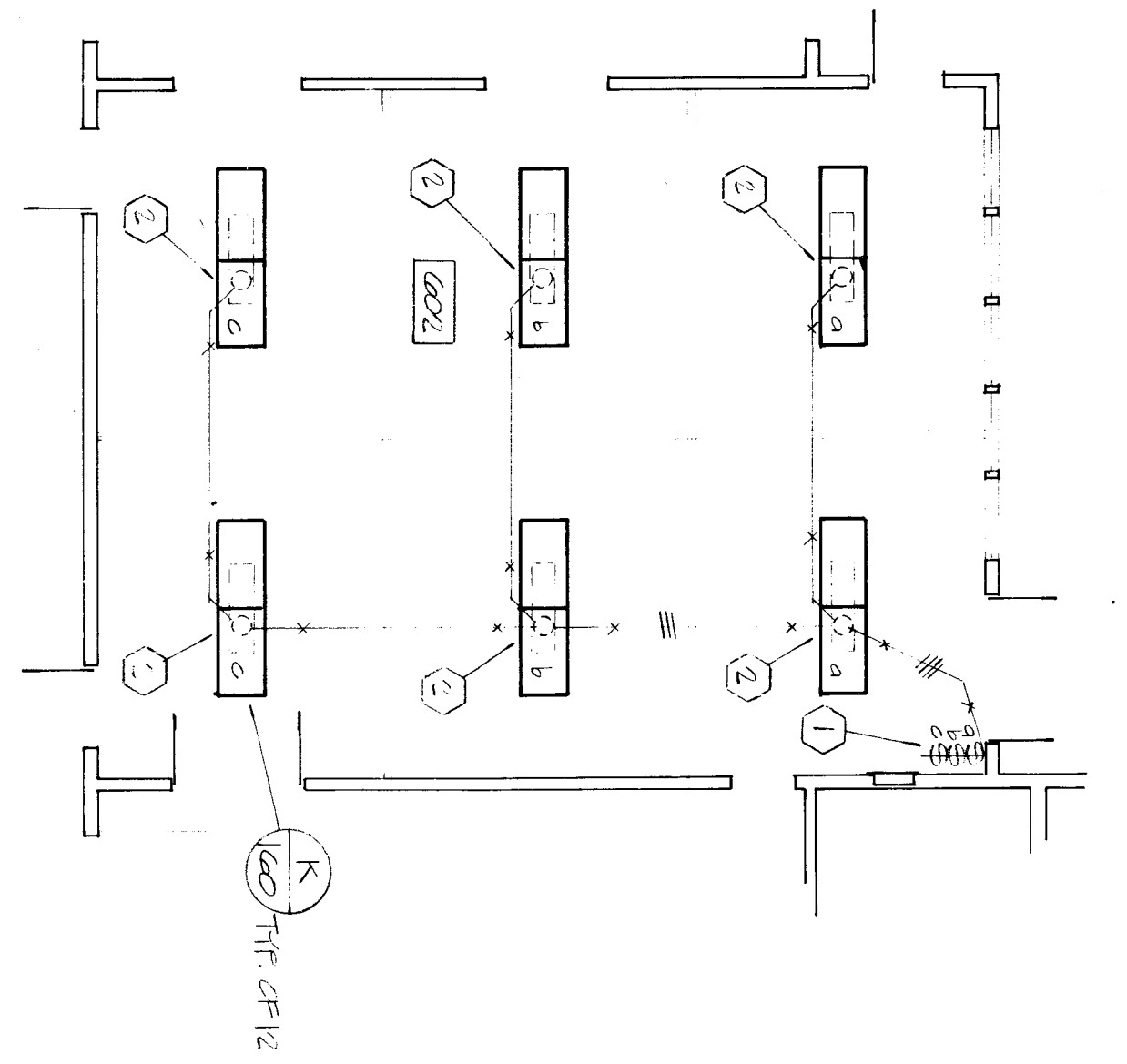
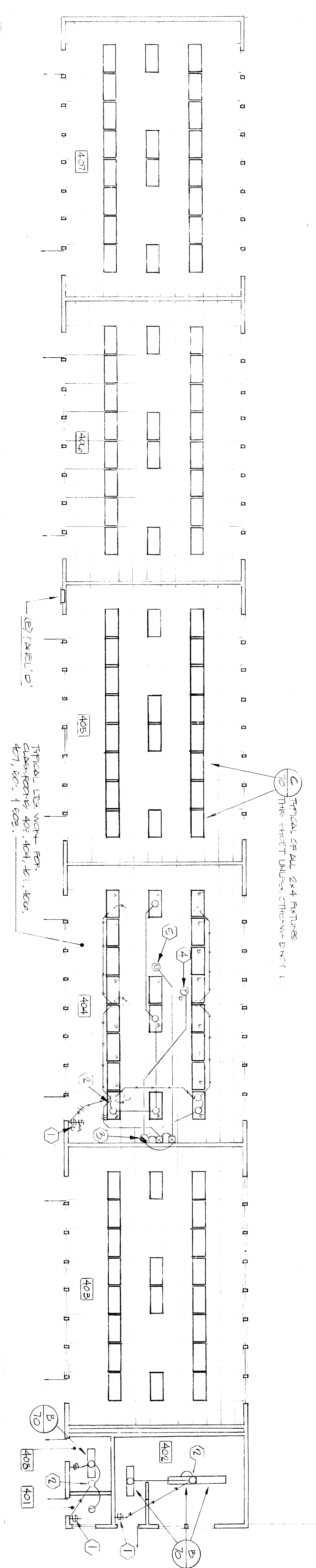


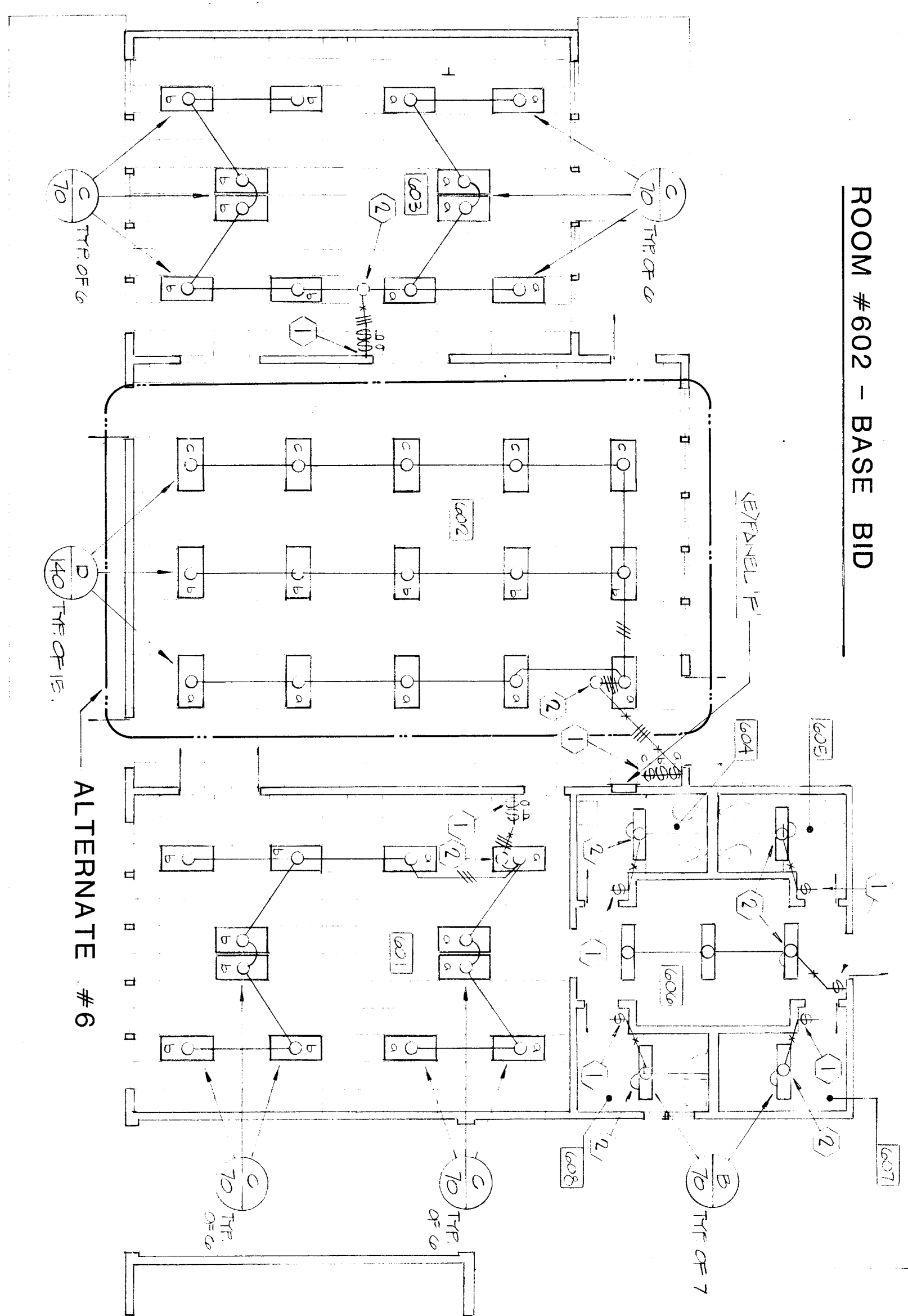
MATCH LINE "B" SEE SHEET E-2



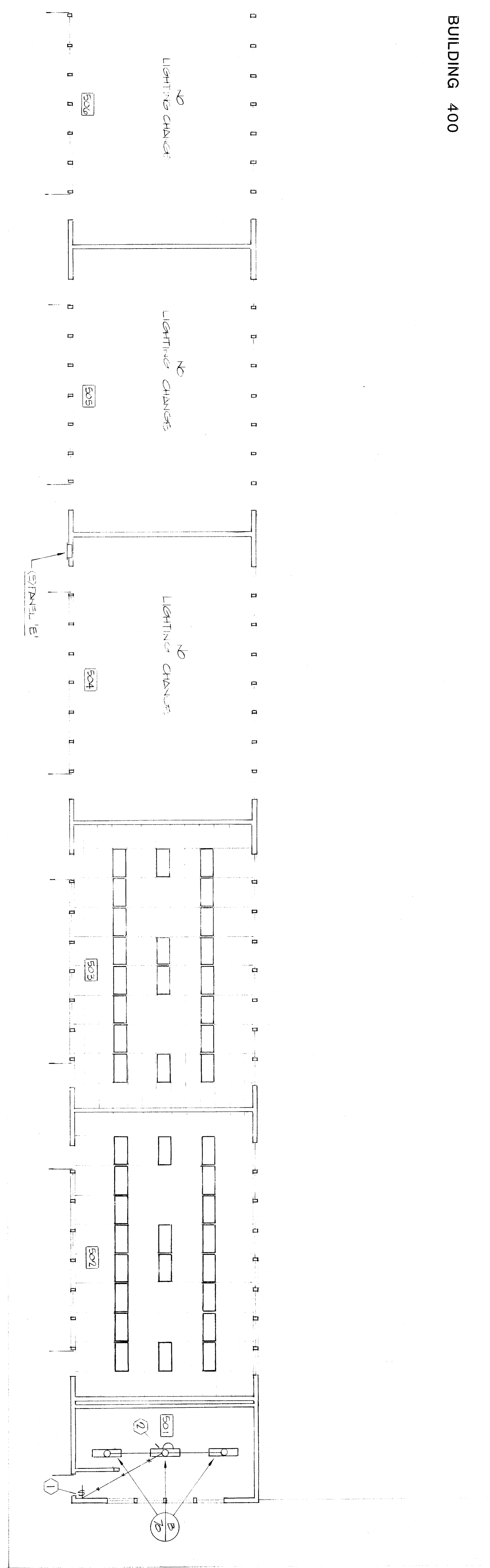
ROOM #602 - BASE BID



BUILDING 400



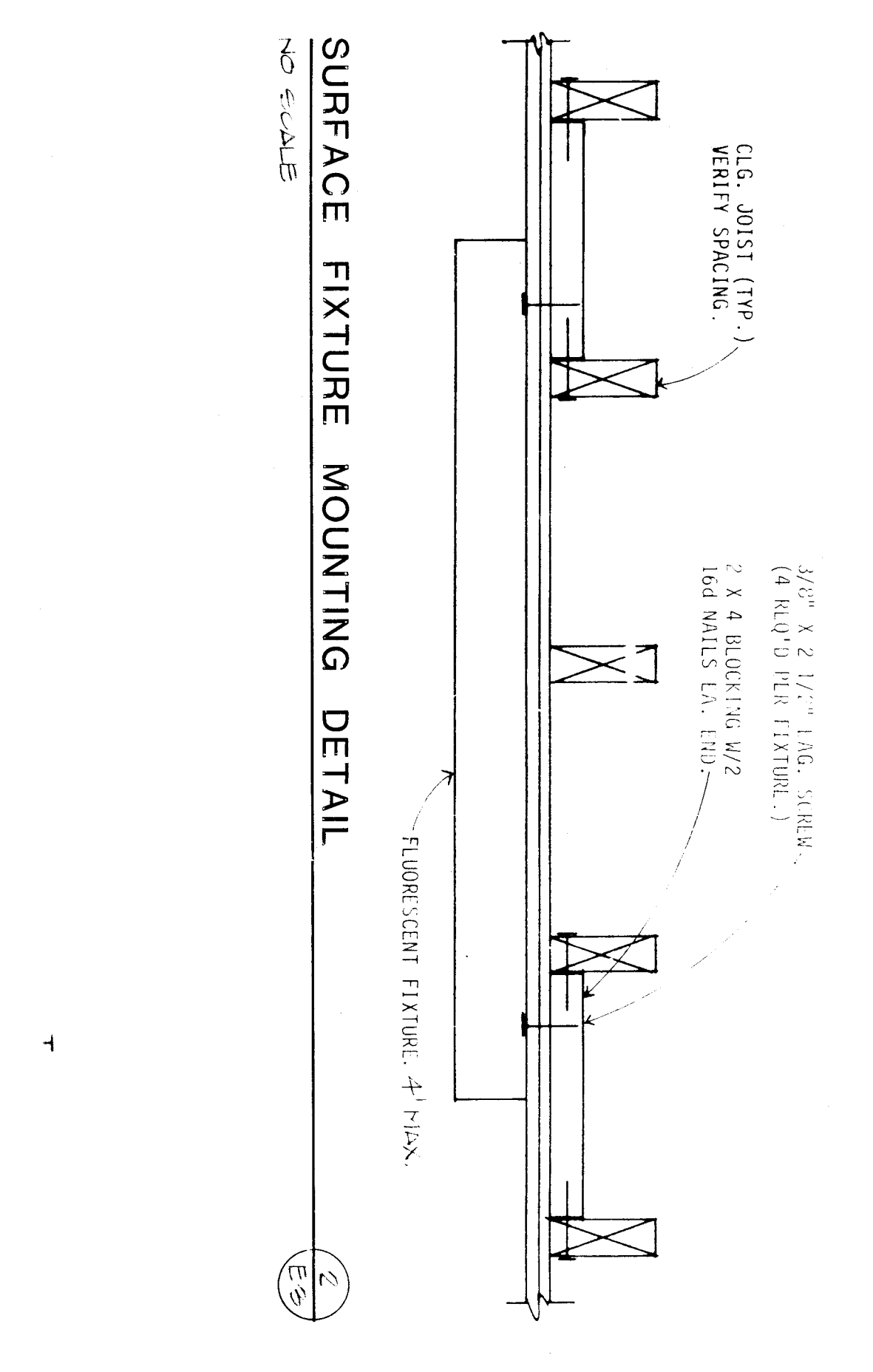
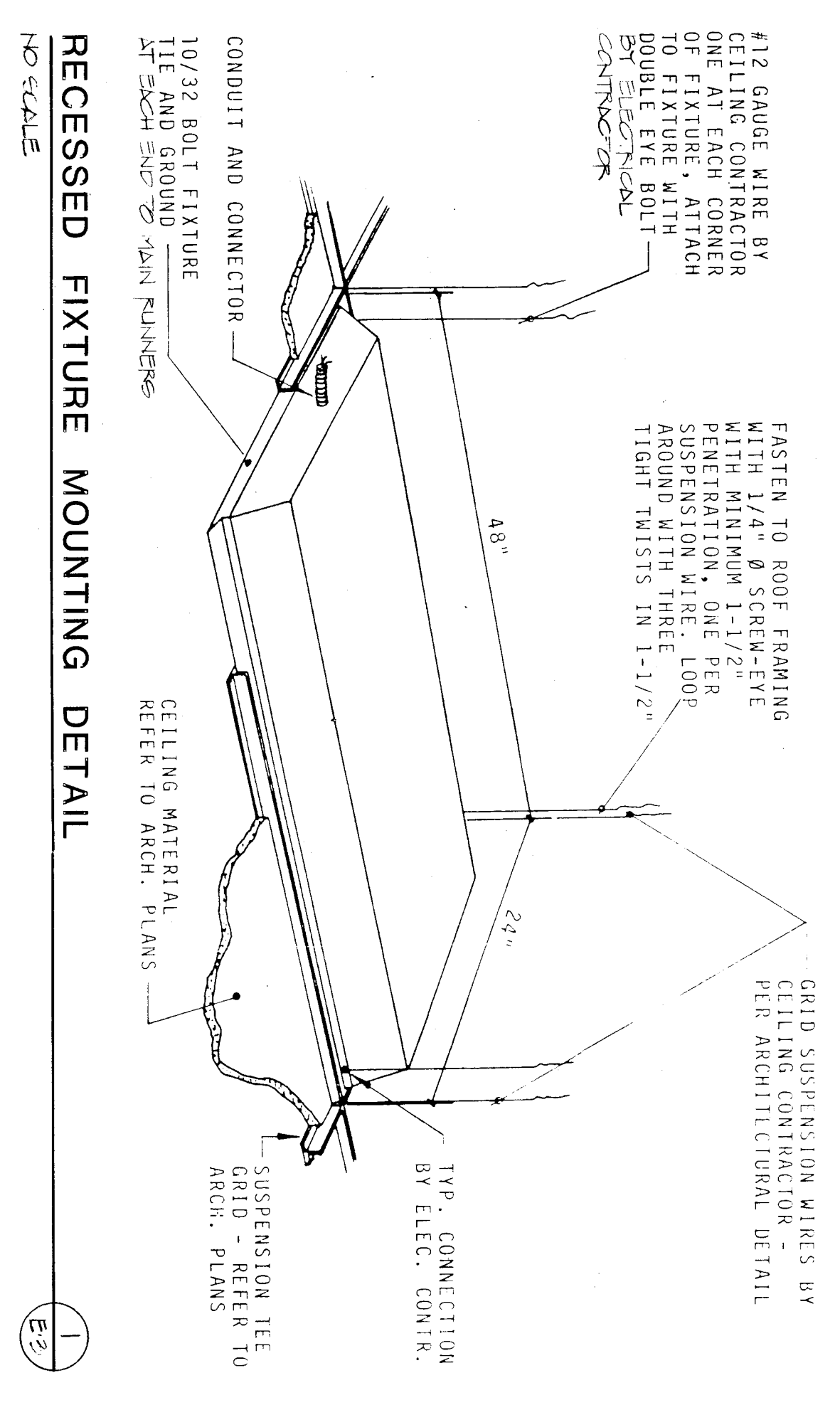
BUILDING 600



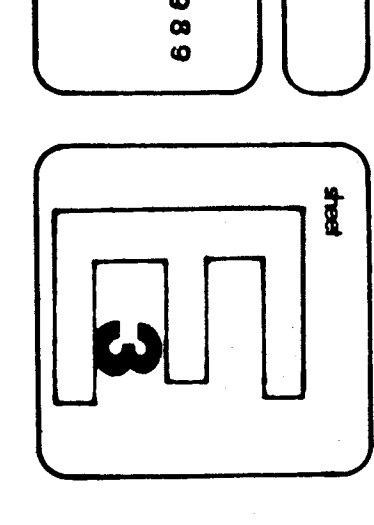
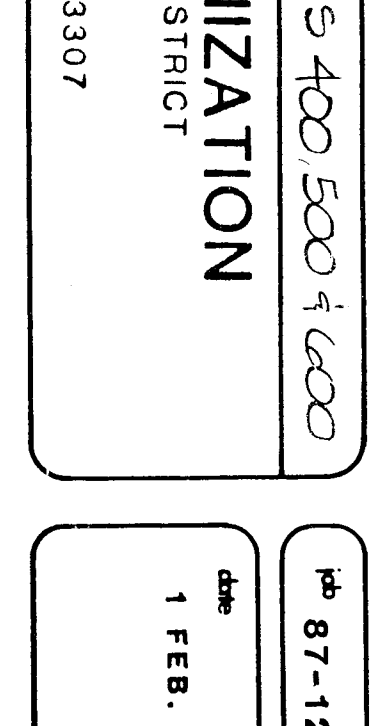
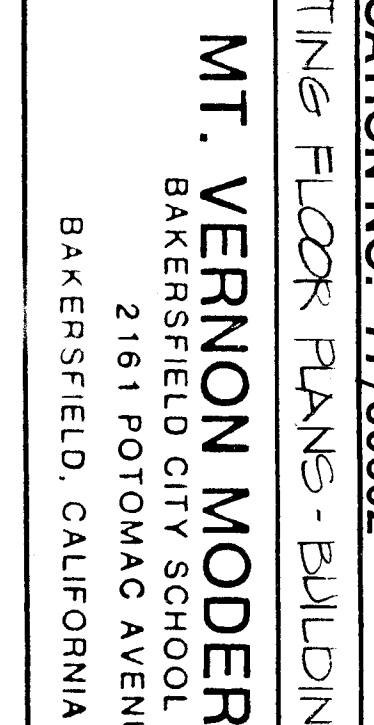
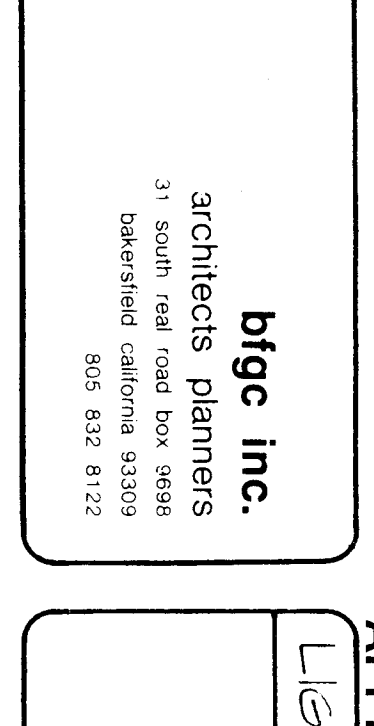
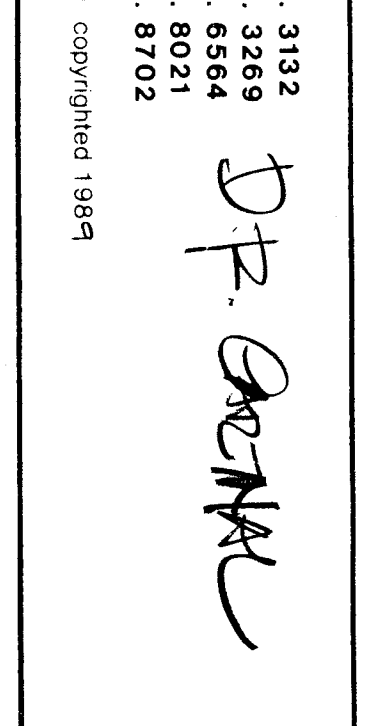
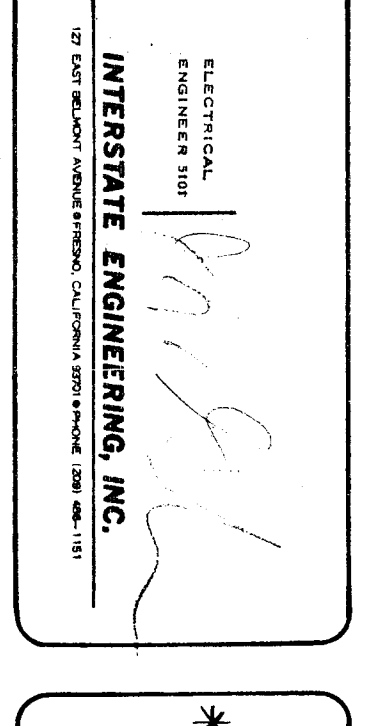
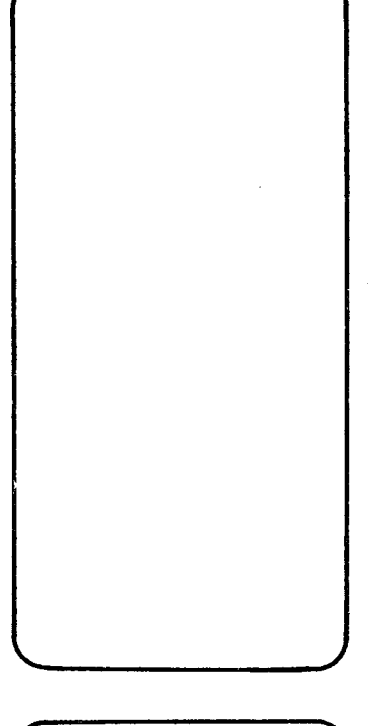
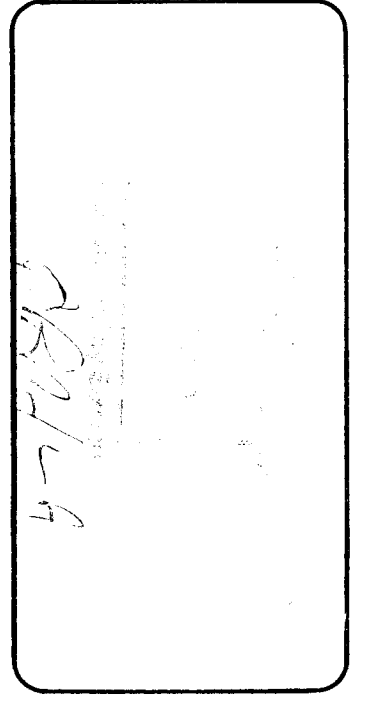
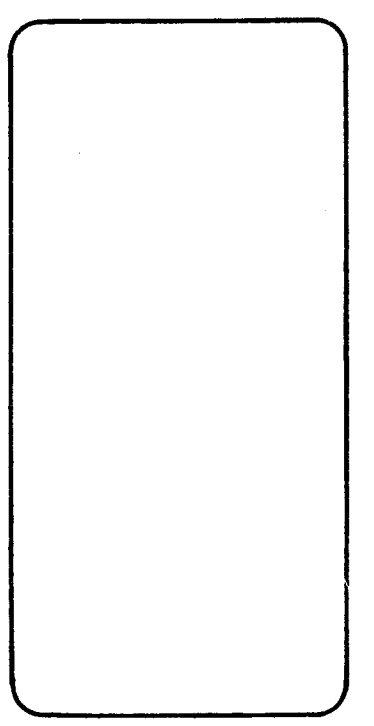
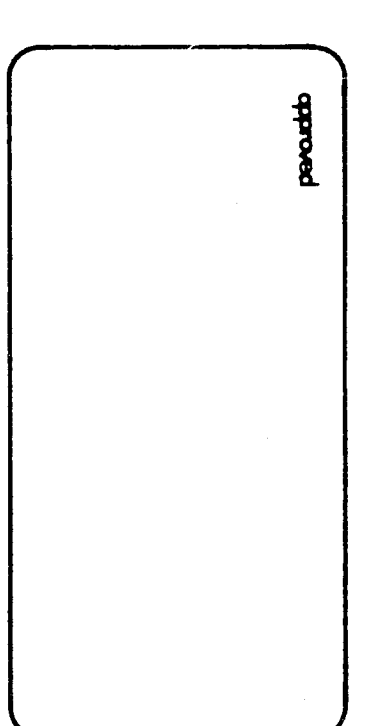
BUILDING 500

LIGHTING FLOOR PLANS

1/8"=1'-0"



- REFERENCE NOTES (THIS SHEET ONLY):
- 1) REPLACE EXISTING WALL SWITCHES AND PLATE.
 - 2) CONNECT NEW FIXTURES TO EXISTING CIRCUITS.
 - 3) AUTOMATIC TUNING CONTROL MOUNTED ABOVE CEILING IN ACCESSIBLE AREA. SEE WIRING DIAGRAM ON SHEET E-4.
 - 4) PHOTO ELECTRIC CELL MOUNTED ON CEILING MINIMUM 10'-0" AWAY FROM NEAREST WINDOW. SEE WIRING DIAGRAM ON SHEET E-4.
 - 5) MOTION SENSOR MOUNTED ON CEILING APPROXIMATELY IN CENTER OF ROOM. SEE WIRING DIAGRAM ON SHEET E-4.

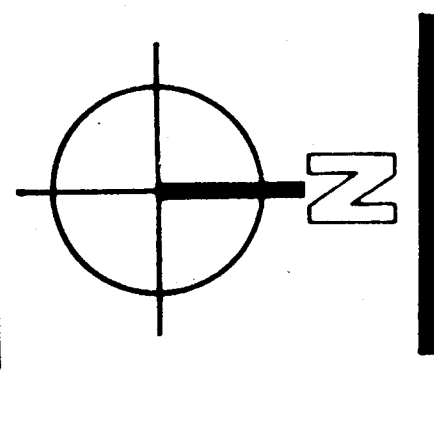


APPLICATION NO. 77/50602

LIGHTING FLOOR PLANS - BUILDINGS 400 500 & 600

MT. VERNON MODERNIZATION
BAKERSFIELD CITY SCHOOL DISTRICT
2161 POTOMAC AVENUE
BAKERSFIELD, CALIFORNIA 93307

DATE 1 FEB. 1989



bfgc
architects - planners