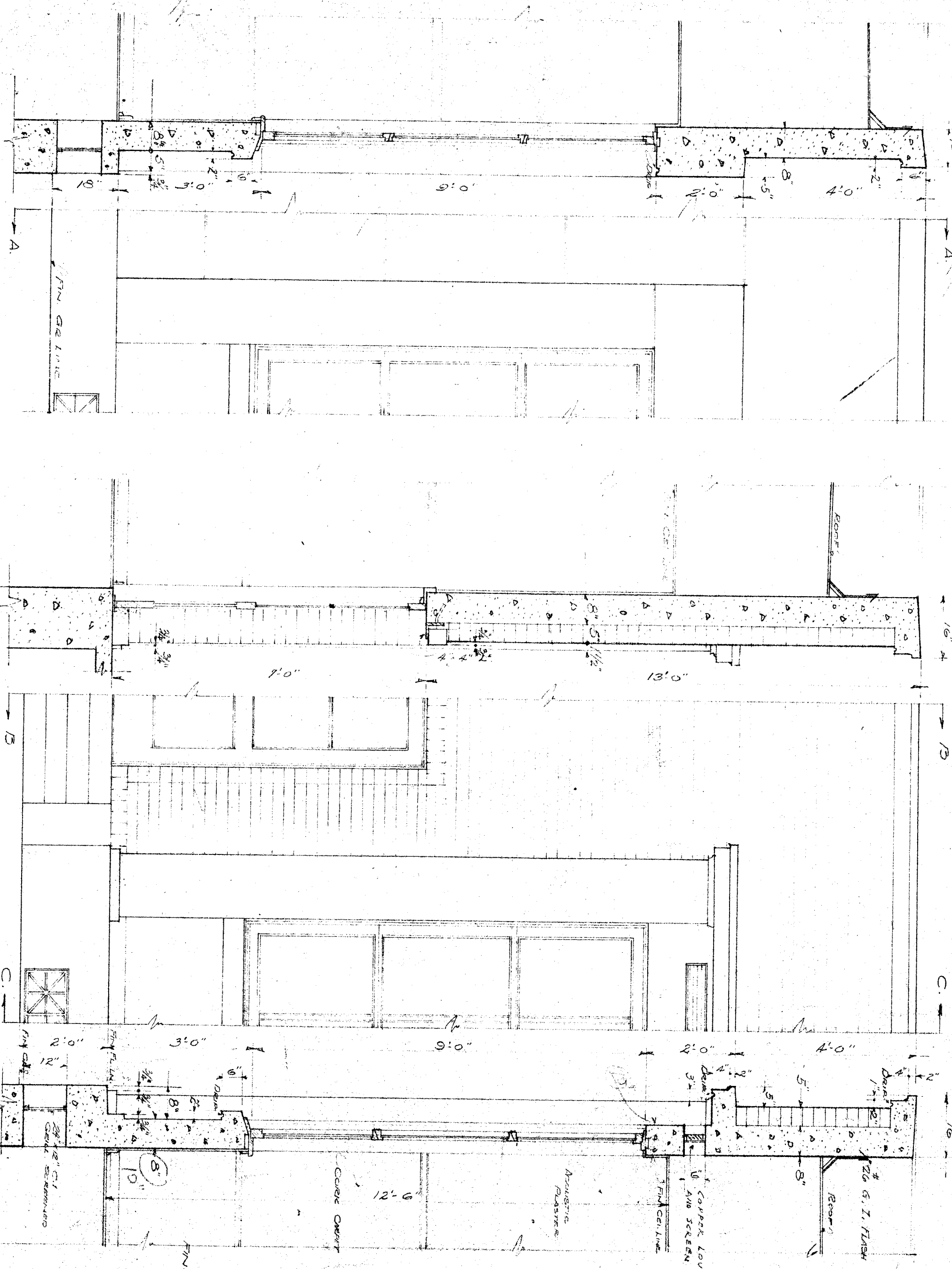
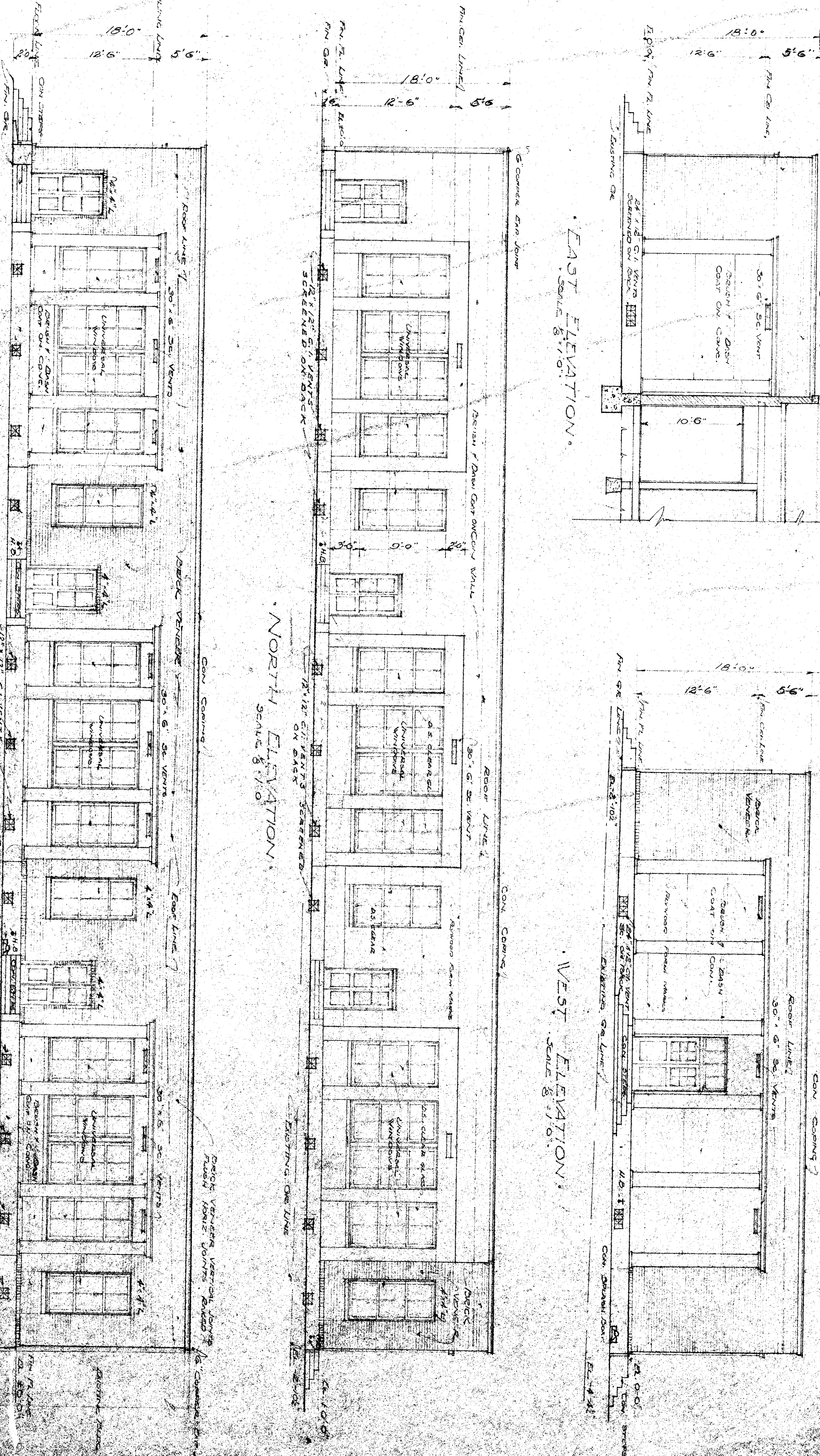


Note: Contractor to verify all dimensions on the work. This drawing is the property of the architect and must be returned on completion of the contract.

PART ELEVATION / SECTION OF NORTH WALL.
SCALE 3/4" = 1'-0"



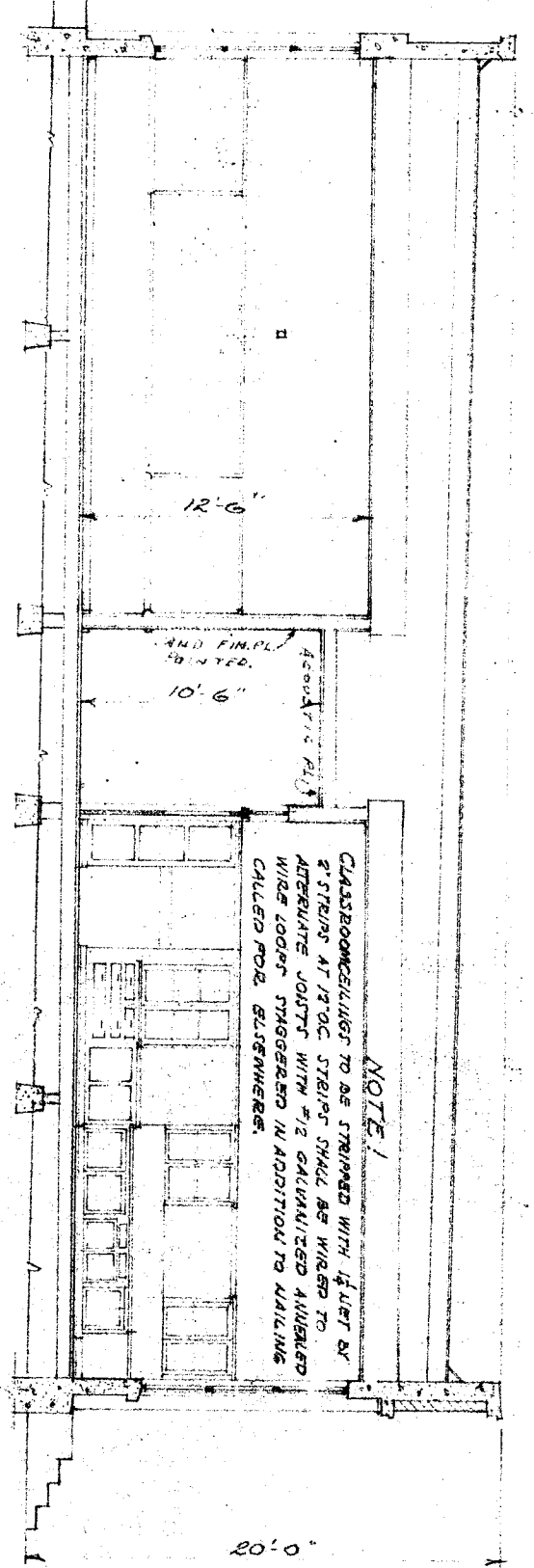
PART ELEVATION / SECTION OF SOUTH WALL.
SCALE 3/4" = 1'-0"



DETAIL OF DOWNING SLOT & ANCHOR.

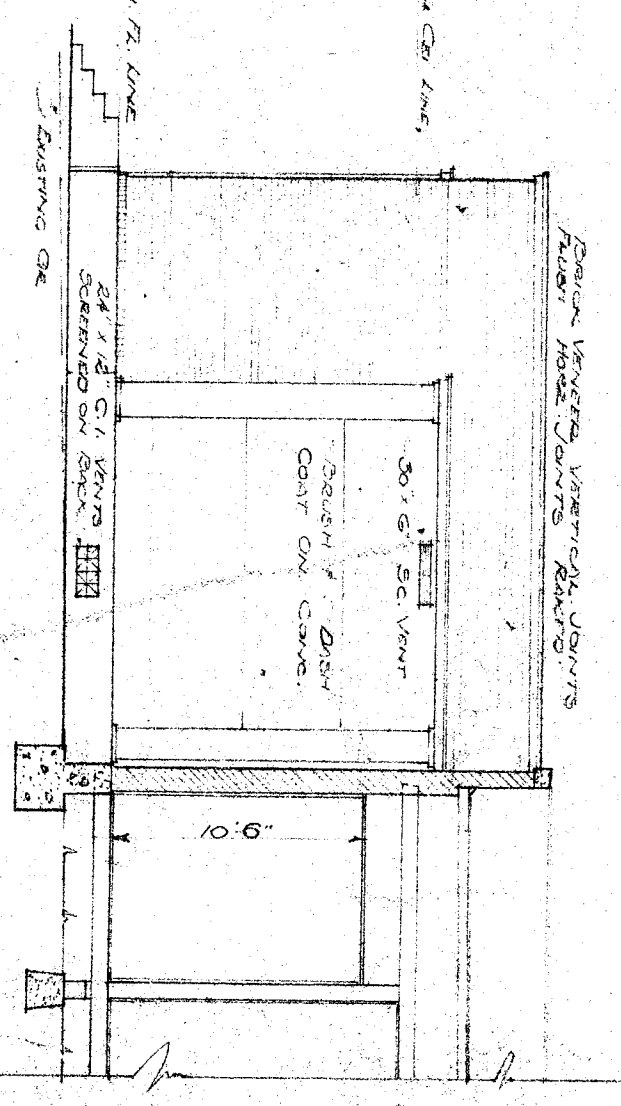
REMOVE ANCHORS FROM 22" DIA. OF 1/2" DIA. STEEL. REMOVE DOWNING SLOTS FROM 1/2" DIA. STEEL. REMOVE ANCHORS FROM 1/2" DIA. STEEL. REMOVE ANCHORS FROM 1/2" DIA. STEEL.

CROSS SECTION.
SCALE 3/4" = 1'-0"

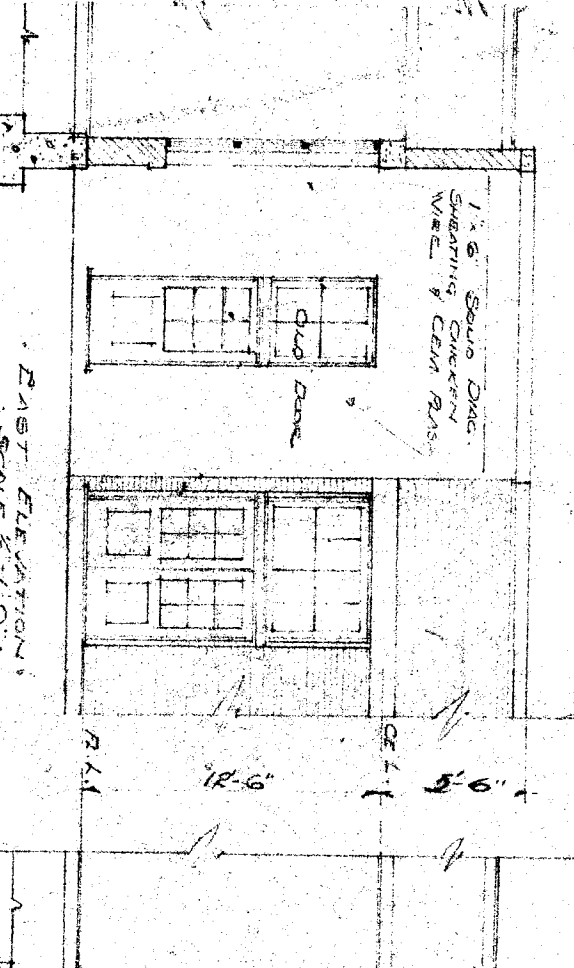


NOTE: CLASSROOMS TO BE FINISHED WITH LIGHT WOOD FLOORING. STAIRS TO BE FINISHED WITH LIGHT WOOD FLOORING. HALLS TO BE FINISHED WITH LIGHT WOOD FLOORING. RESTROOMS TO BE FINISHED WITH LIGHT WOOD FLOORING.

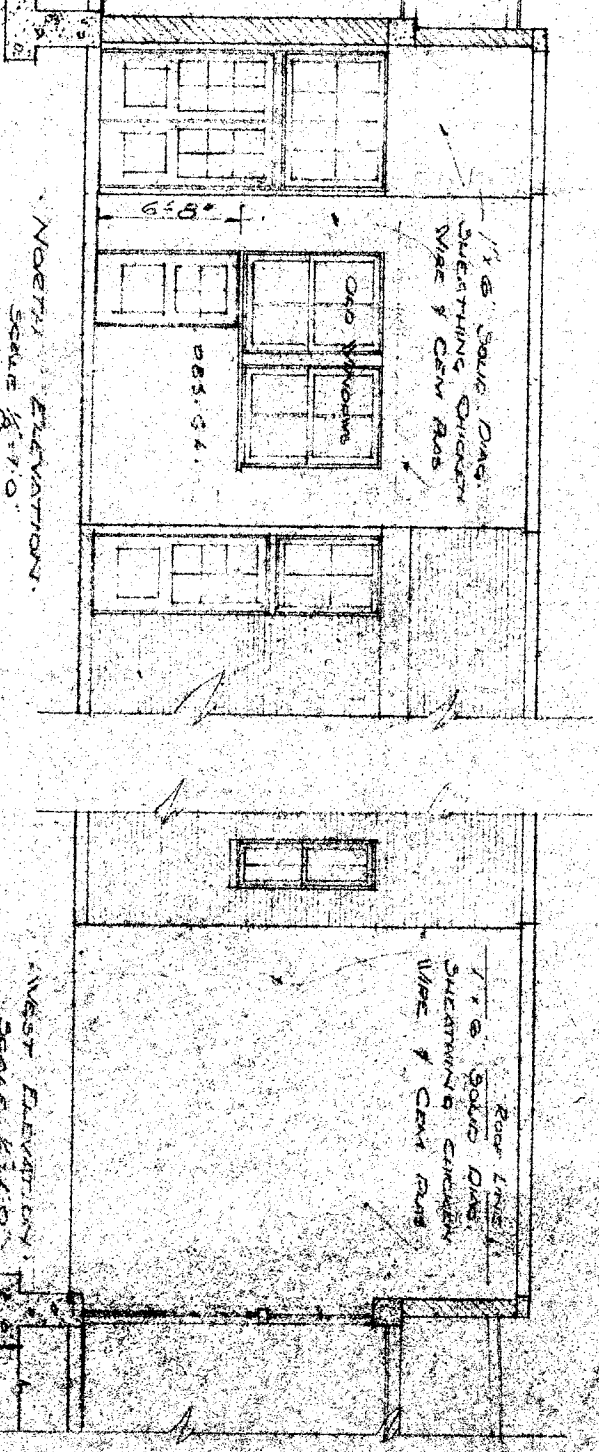
EAST ELEVATION.
SCALE 3/4" = 1'-0"



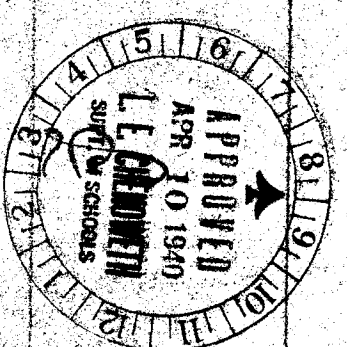
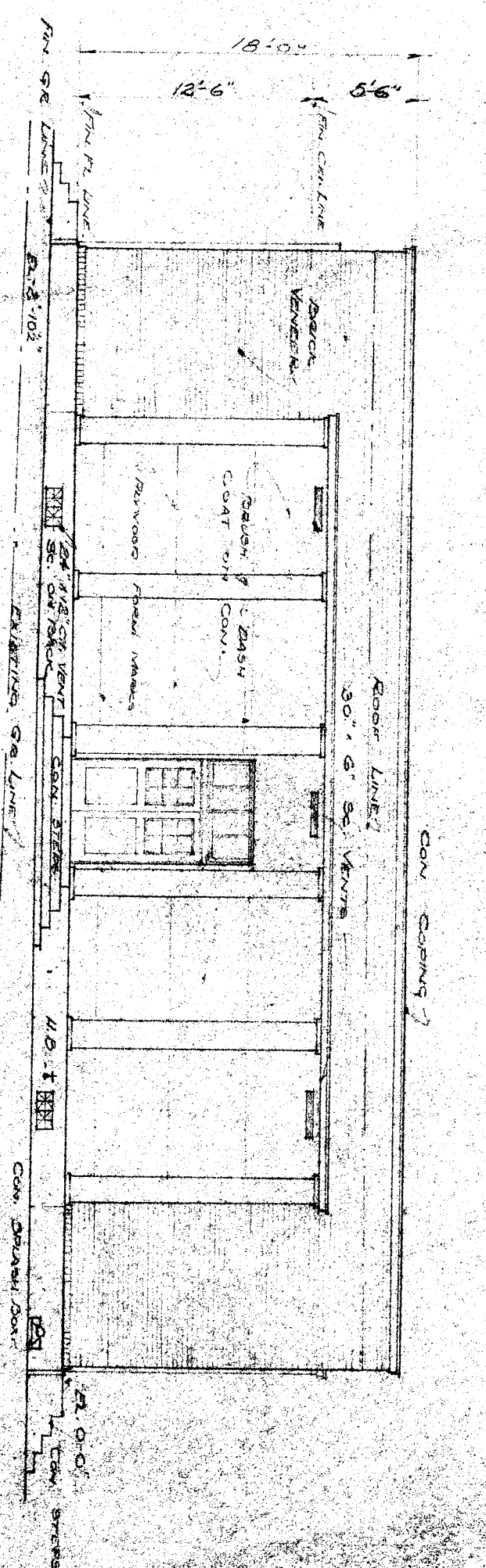
BOYS TOILET ANNEX.
SCALE 3/4" = 1'-0"



GIRLS TOILET ANNEX.
SCALE 3/4" = 1'-0"



WEST ELEVATION.
SCALE 3/4" = 1'-0"



STATE OF CALIFORNIA, DEPARTMENT OF PUBLIC WORKS, DIVISION OF ARCHITECTURE. APPROVED. 4-5-40. HONG M. BAKER, ARCHITECT.

APPROVED. 1940. HONG M. BAKER, ARCHITECT.

ADDITIONS TO HODACHT MAIN SCHOOL, BAKERSFIELD SCHOOL DISTRICT, BAKERSFIELD, CALIFORNIA.

CHANNISH BACAR ARCHITECT, 324 BAKERSFIELD BUILDING, BAKERSFIELD, CALIFORNIA.