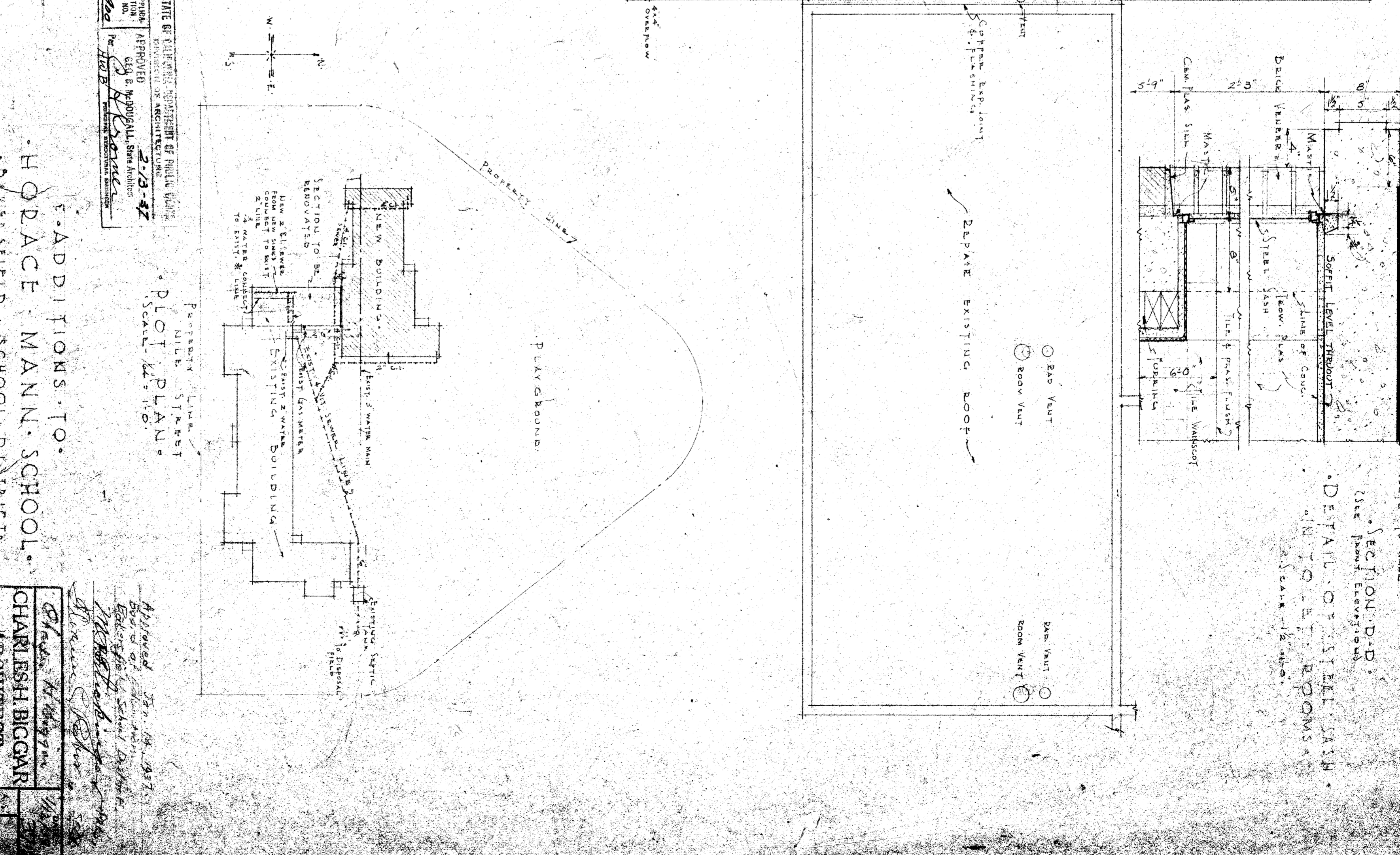
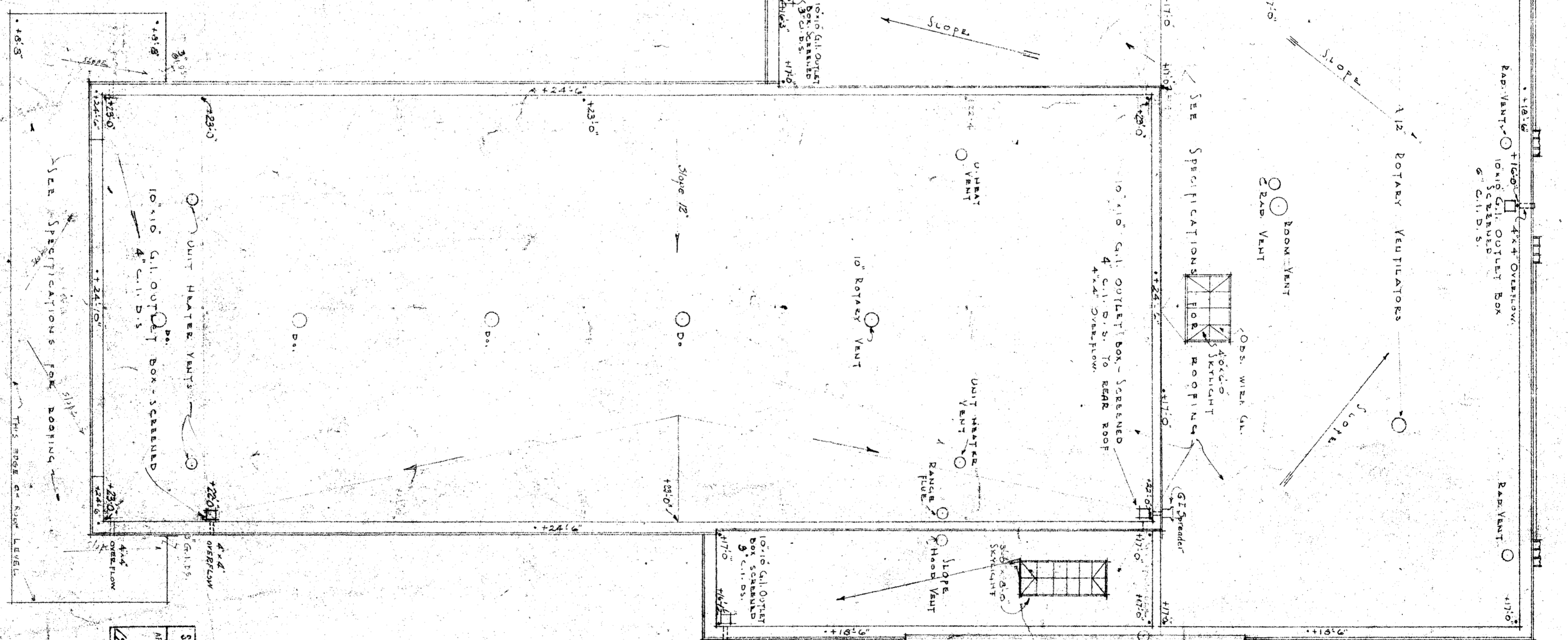
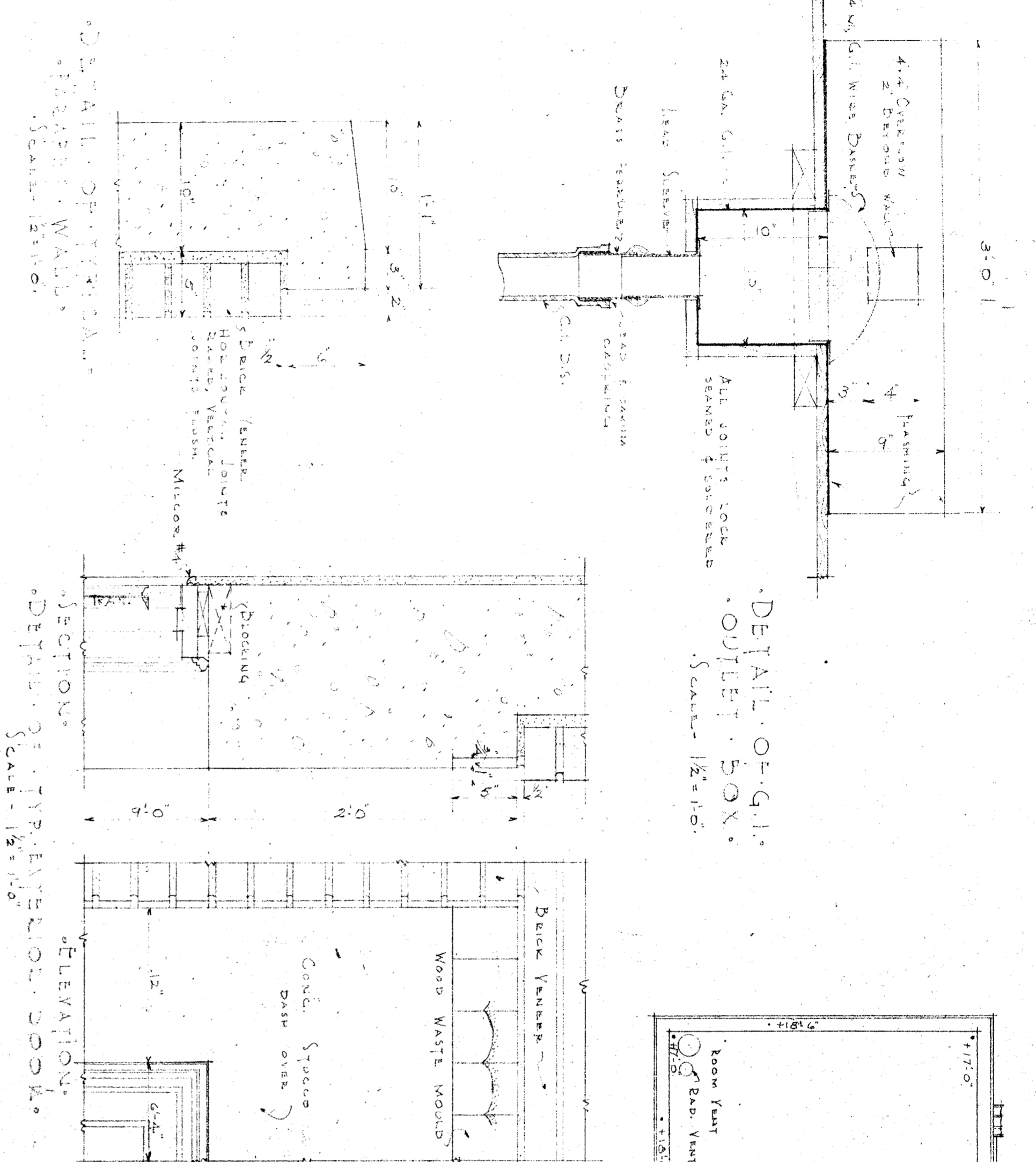


NO.	ROOM	FLOOR	WALLS	CEILING	BASE	PICTURE	WAINSCOT	REMARKS
1	CLASS. ROOM	1st	Plaster on brick	Plaster on brick	Plaster on brick	Plaster on brick	Plaster on brick	
2	CLASS. ROOM	1st	Plaster on brick	Plaster on brick	Plaster on brick	Plaster on brick	Plaster on brick	
3	CLASS. ROOM	1st	Plaster on brick	Plaster on brick	Plaster on brick	Plaster on brick	Plaster on brick	
4	CLASS. ROOM	1st	Plaster on brick	Plaster on brick	Plaster on brick	Plaster on brick	Plaster on brick	
5	CLASS. ROOM	1st	Plaster on brick	Plaster on brick	Plaster on brick	Plaster on brick	Plaster on brick	
6	CLASS. ROOM	1st	Plaster on brick	Plaster on brick	Plaster on brick	Plaster on brick	Plaster on brick	
7	CLASS. ROOM	1st	Plaster on brick	Plaster on brick	Plaster on brick	Plaster on brick	Plaster on brick	
8	CLASS. ROOM	1st	Plaster on brick	Plaster on brick	Plaster on brick	Plaster on brick	Plaster on brick	
9	CLASS. ROOM	1st	Plaster on brick	Plaster on brick	Plaster on brick	Plaster on brick	Plaster on brick	
10	CLASS. ROOM	1st	Plaster on brick	Plaster on brick	Plaster on brick	Plaster on brick	Plaster on brick	
11	CLASS. ROOM	1st	Plaster on brick	Plaster on brick	Plaster on brick	Plaster on brick	Plaster on brick	
12	CLASS. ROOM	1st	Plaster on brick	Plaster on brick	Plaster on brick	Plaster on brick	Plaster on brick	
13	CLASS. ROOM	1st	Plaster on brick	Plaster on brick	Plaster on brick	Plaster on brick	Plaster on brick	
14	CLASS. ROOM	1st	Plaster on brick	Plaster on brick	Plaster on brick	Plaster on brick	Plaster on brick	
15	CLASS. ROOM	1st	Plaster on brick	Plaster on brick	Plaster on brick	Plaster on brick	Plaster on brick	
16	CLASS. ROOM	1st	Plaster on brick	Plaster on brick	Plaster on brick	Plaster on brick	Plaster on brick	
17	CLASS. ROOM	1st	Plaster on brick	Plaster on brick	Plaster on brick	Plaster on brick	Plaster on brick	
18	CLASS. ROOM	1st	Plaster on brick	Plaster on brick	Plaster on brick	Plaster on brick	Plaster on brick	

Notes:
 1. Dimensions in the work shall be taken from the center of the room unless otherwise noted.
 2. All work shall be in accordance with the specifications and details shown on these plans.



ADDITIONS TO
 HODACE MANN SCHOOL.
 DAKESFIELD SCHOOL DISTRICT
 DAKESFIELD, CALIFORNIA.

CHARLES H. BIGGAR
 ARCHITECT
 554 HABERFELDE BUILDING
 BAYESFIELD, CALIFORNIA

SITE OF THE PROPOSED ADDITIONS TO THE HODACE MANN SCHOOL, DAKESFIELD, CALIFORNIA.
 APPROVED BY THE BOARD OF SUPERVISORS OF THE COUNTY OF SACRAMENTO, CALIFORNIA, ON THIS 23rd DAY OF MARCH, 1932.
 J. H. BROWN, COUNTY CLERK

Approved 5th day of March, 1932.
 Board of Supervisors
 Sacramento, California