

WINDOW SCHEDULE - UNIVERSAL SASH

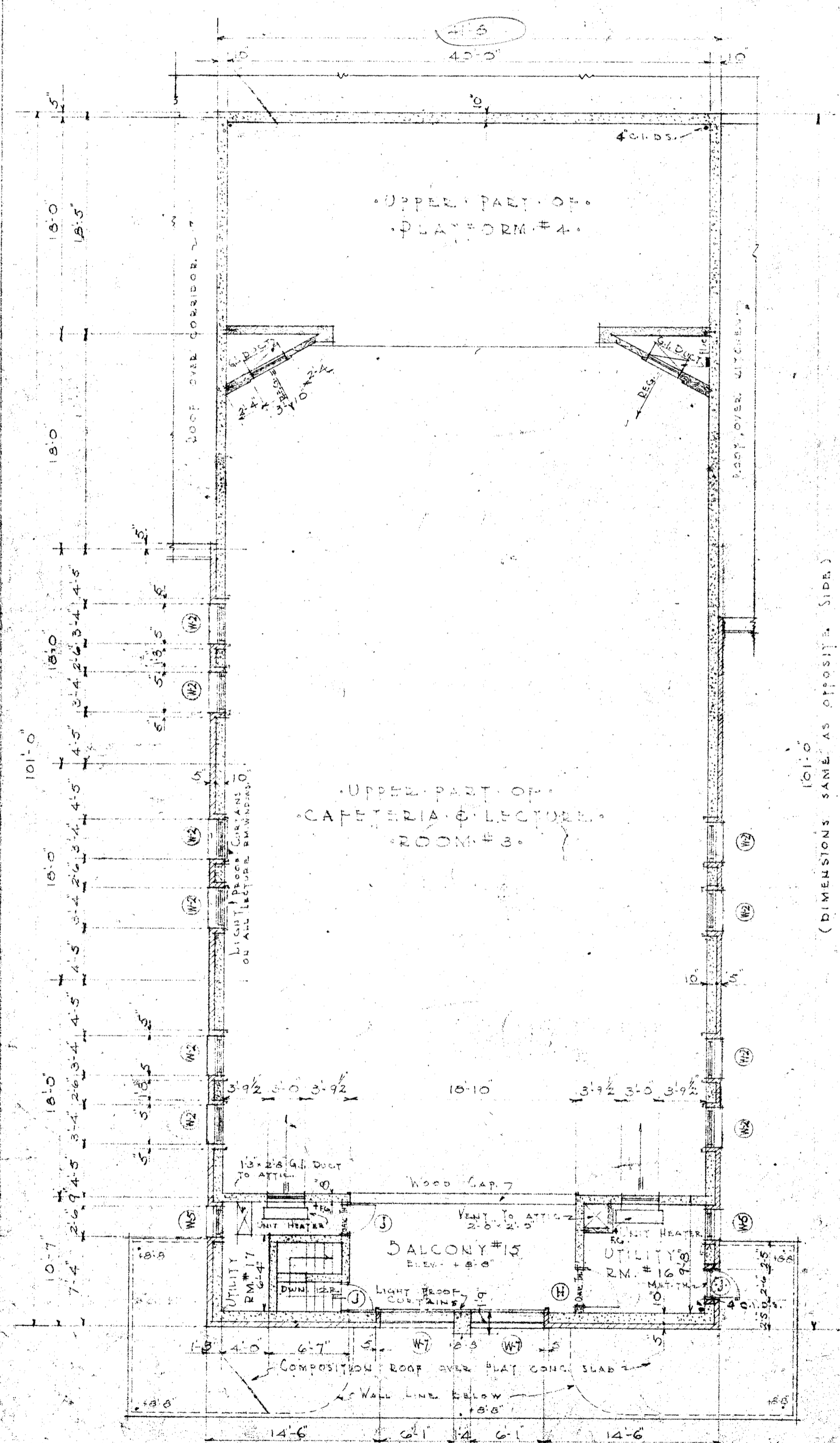
NO.	NO. SASH	HT.	NO. LIGHTS	HT. HIGH	UNION SASH	SASH DIMENSIONS	ROUGH OPENING
1	3	5	3	41.0	8	41.0 x 81.0	91.0 x 126.0
2	3	5	3	31.0	8	31.0 x 81.0	61.0 x 116.0
3	2	5	3	31.0	8	31.0 x 81.0	61.0 x 116.0
4	2	5	3	31.0	8	31.0 x 81.0	61.0 x 116.0
5	1	5	2	21.0	2	21.0 x 21.0	31.0 x 31.0
6	1	5	3	31.0	8	31.0 x 81.0	61.0 x 116.0
7	1	5	3	31.0	8	31.0 x 81.0	61.0 x 116.0
8	1	5	3	31.0	8	31.0 x 81.0	61.0 x 116.0
9	1	5	3	31.0	8	31.0 x 81.0	61.0 x 116.0

TRANSOMS
6.0 x 11.0
STEEL SASH
2.0 x 2.0
4.0 x 2.0

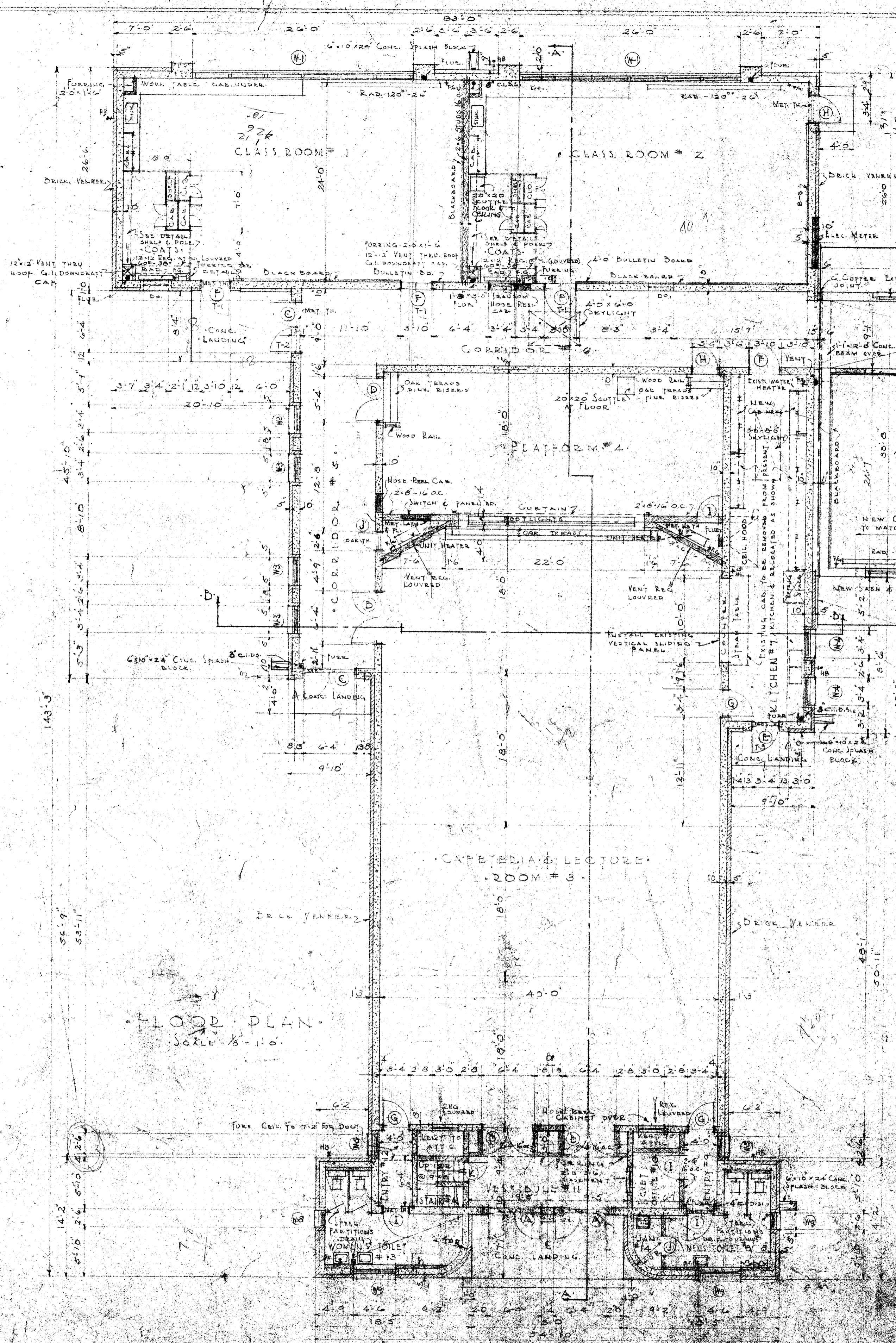
SEE ELEVATIONS

DETAIL OF HANGER WIRE FOR SUSPENDED CEILING

PLAN THROUGH UPPER PART OF CAFETERIA & LECTURE RM. #3 (SHOWING PLAN OF BALCONY & UTILITY ROOMS) SCALE - 1/8" = 1'-0"

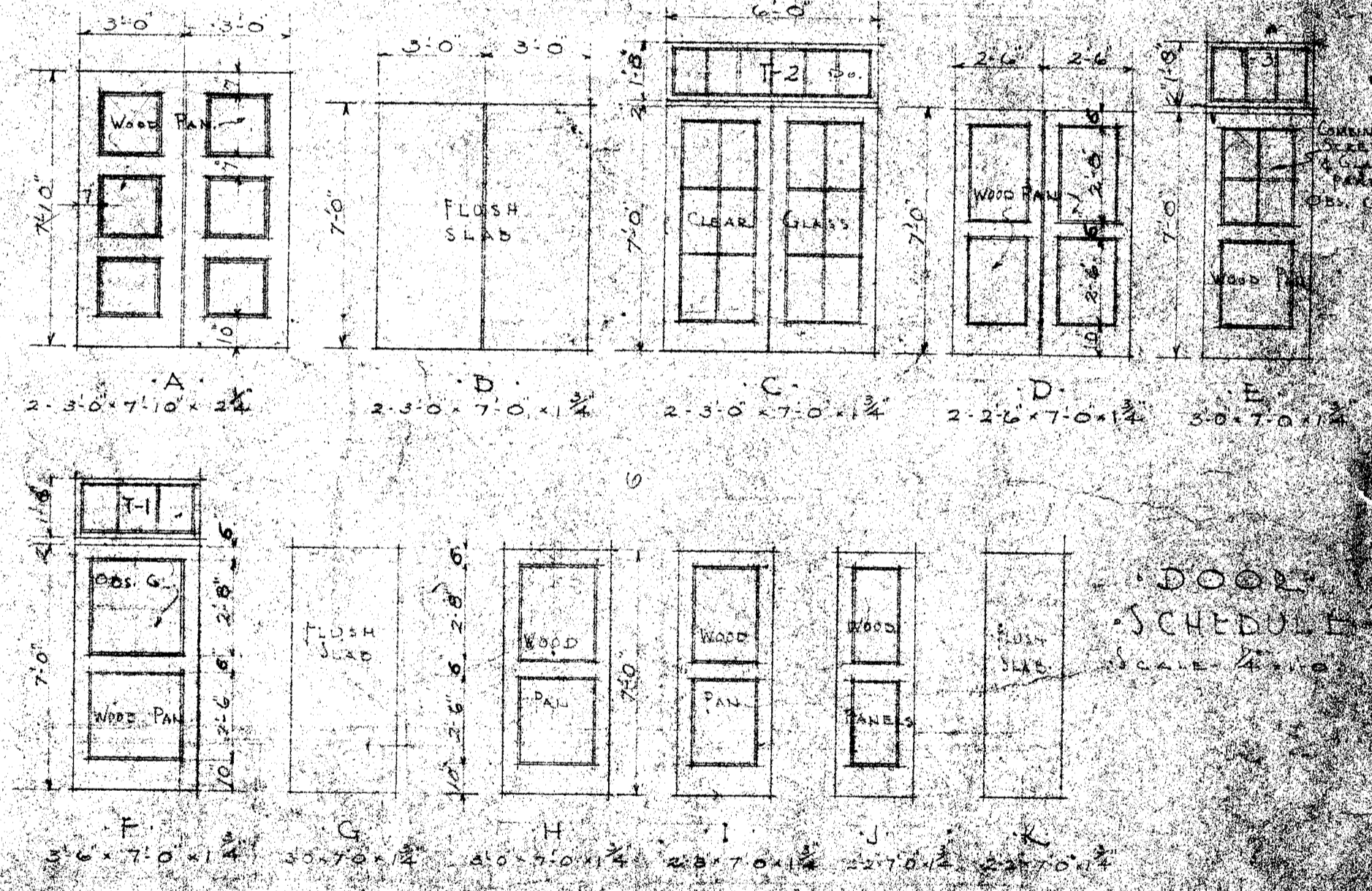


Note: Contractor is to verify all dimensions on the work. This drawing is the property of the architect and must be returned on completion of the contract.



FLOOR PLAN SCALE - 1/8" = 1'-0"

NOTES: PORTION OF WORK NOT TO BE INCLUDED IN APPROVAL OF STATE DIVISION OF ARCHITECTURE, BUT INCLUDED IN THIS CONTRACT. ALTERATIONS TO EXISTING BUILDING.



STATE OF CALIFORNIA - DEPARTMENT OF PUBLIC WORKS
DIVISION OF ARCHITECTURE
APPROVED: 2-14-37
GEO. D. MURPHY, State Architect

ADDITIONS TO HOPKINS MANN SCHOOL
BARCELONIA SCHOOL DISTRICT
BARCELONIA, CALIFORNIA

CHARLES H. BIGGAR
ARCHITECT
511 HENRIETTA BUILDING
BARCELONIA, CALIFORNIA