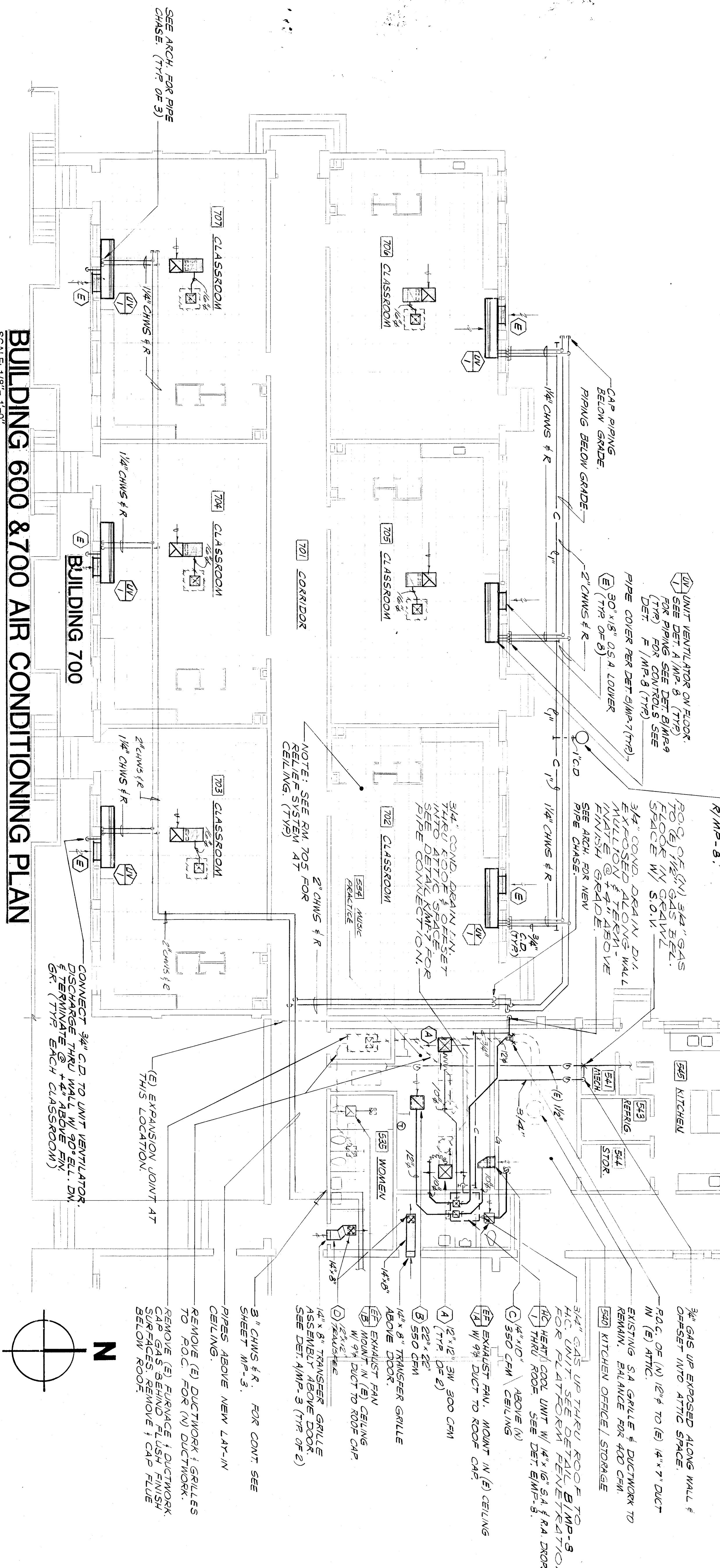


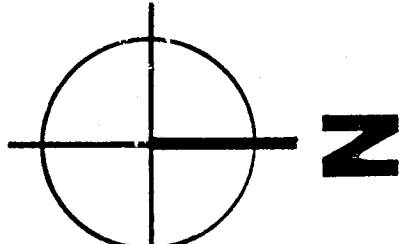
BUILDING 600 2ND FLOOR

- FIRE SPRINKLER NOTES:**
1. THE AUTOMATIC FIRE SPRINKLER SYSTEM SHALL CONFORM TO THE REQUIREMENTS OF SECTION 910 OF THE NATIONAL FIRE PROTECTION ASSOCIATION STANDARD 13.
 2. PENETRATIONS OF WATER ASSEMBLIES SHALL BE FIRE STOPPED IN STATE FIRE MARSHAL STANDARD 43-1.1.
 3. INSTALLATION OF THE FIRE SPRINKLER SYSTEM SHALL NOT BE STARTED UNTIL COMPLETE PLANS AND SPECIFICATIONS (INCLUDING WATER SUPPLY INFORMATION AND TYPE OF EXISTING SYSTEM, IF ANY) HAVE BEEN APPROVED BY THE STATE FIRE MARSHAL.
 4. AT VARIOUS STAGES AND UPON COMPLETION, THE SYSTEM MUST BE TESTED IN THE PRESENCE OF THE ENFORCING AGENCY.
 5. REFER TO FIRE SPRINKLER SYSTEM SPECIFICATION SECTION 15500 FOR ADDITIONAL INFORMATION.



BUILDING 600 & 700 AIR CONDITIONING PLAN

SCALE: 1/8" = 1'-0"



approved
 Donald R. Lawrence & Associates
 CONSULTING MECHANICAL ENGINEERS, INCORPORATED
 1000 W. SOUTH ROAD, SUITE 200, BAKERSFIELD, CALIFORNIA 93307
 TEL: 805/338-8888 FAX: 805/338-8888
 C-3288
 C-3132
 C-3134
 D.P. O'NEIL
 architects planners
 31 SOUTH ROAD, SUITE 200, BAKERSFIELD, CALIFORNIA 93307
 BAKERSFIELD, CALIFORNIA 93307
 JOB 87-127
 DATE 11/19/81
 SHEET MP-4