

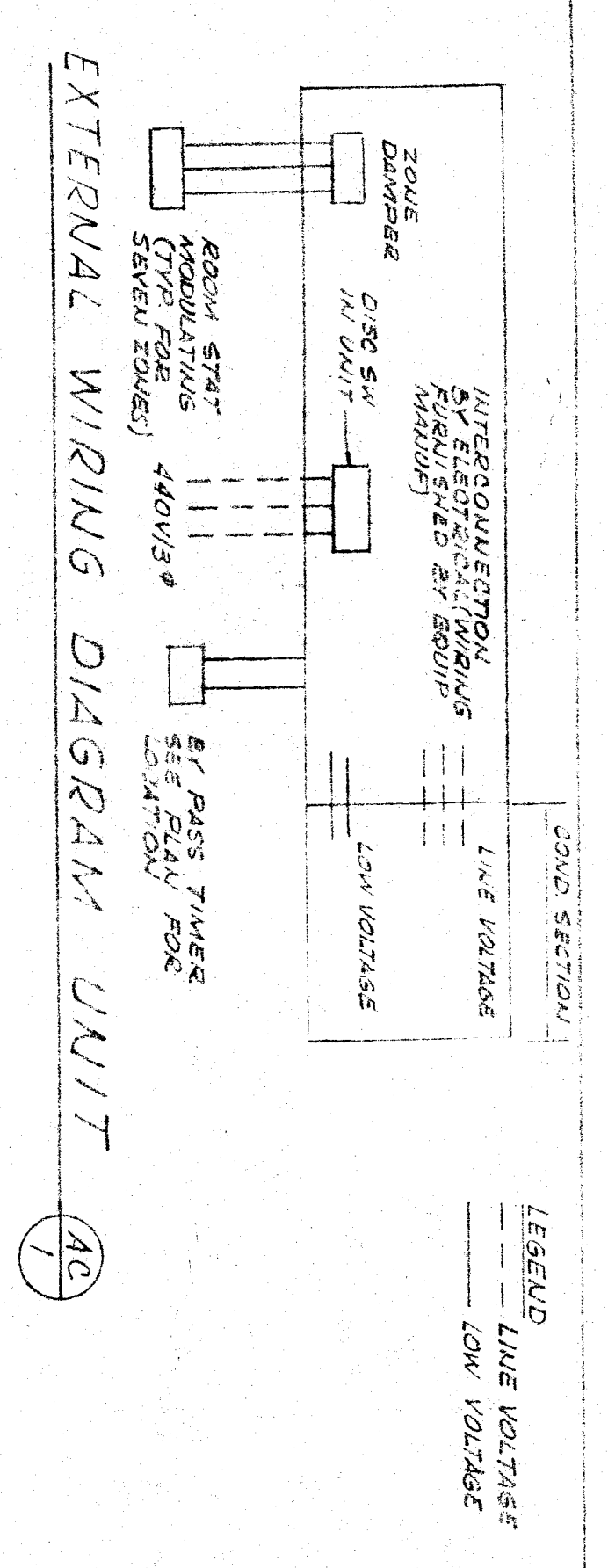
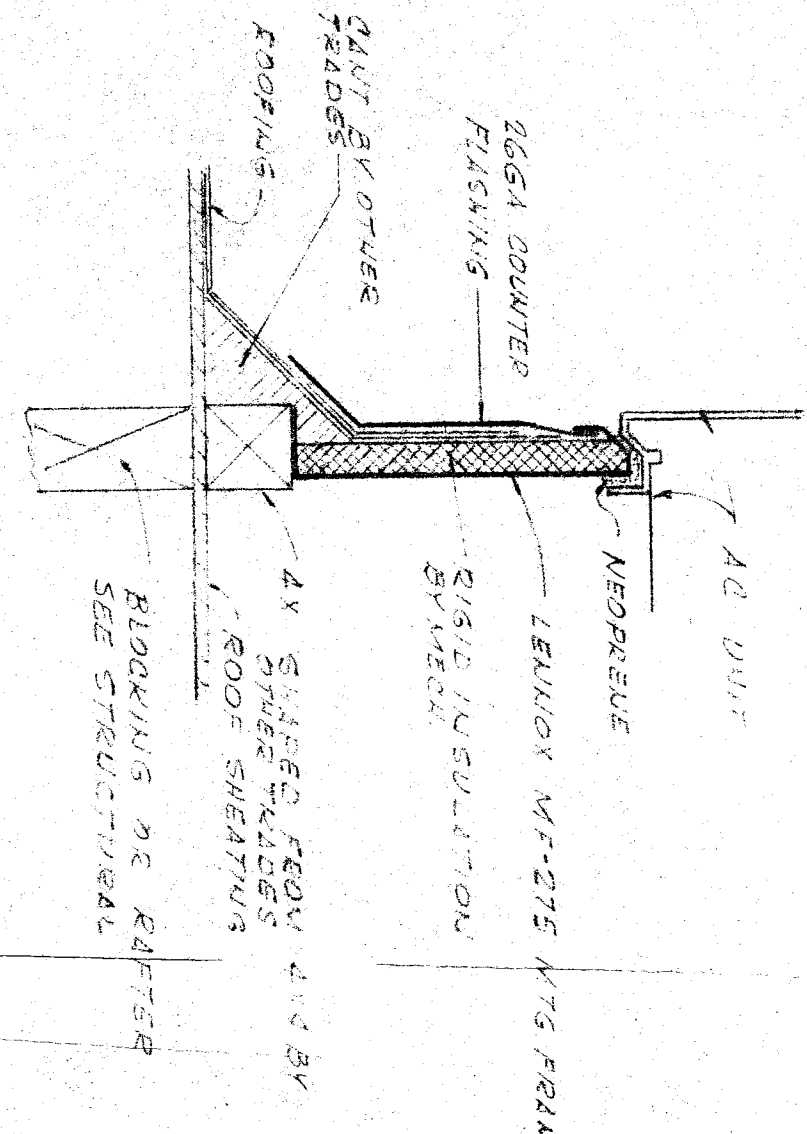
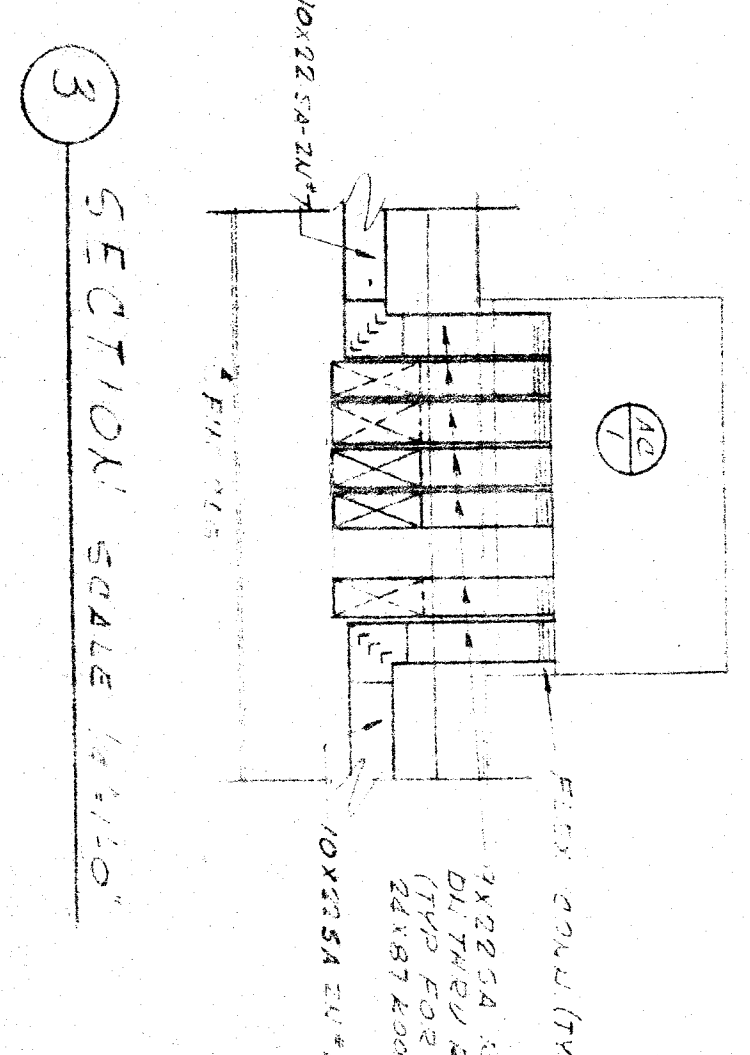
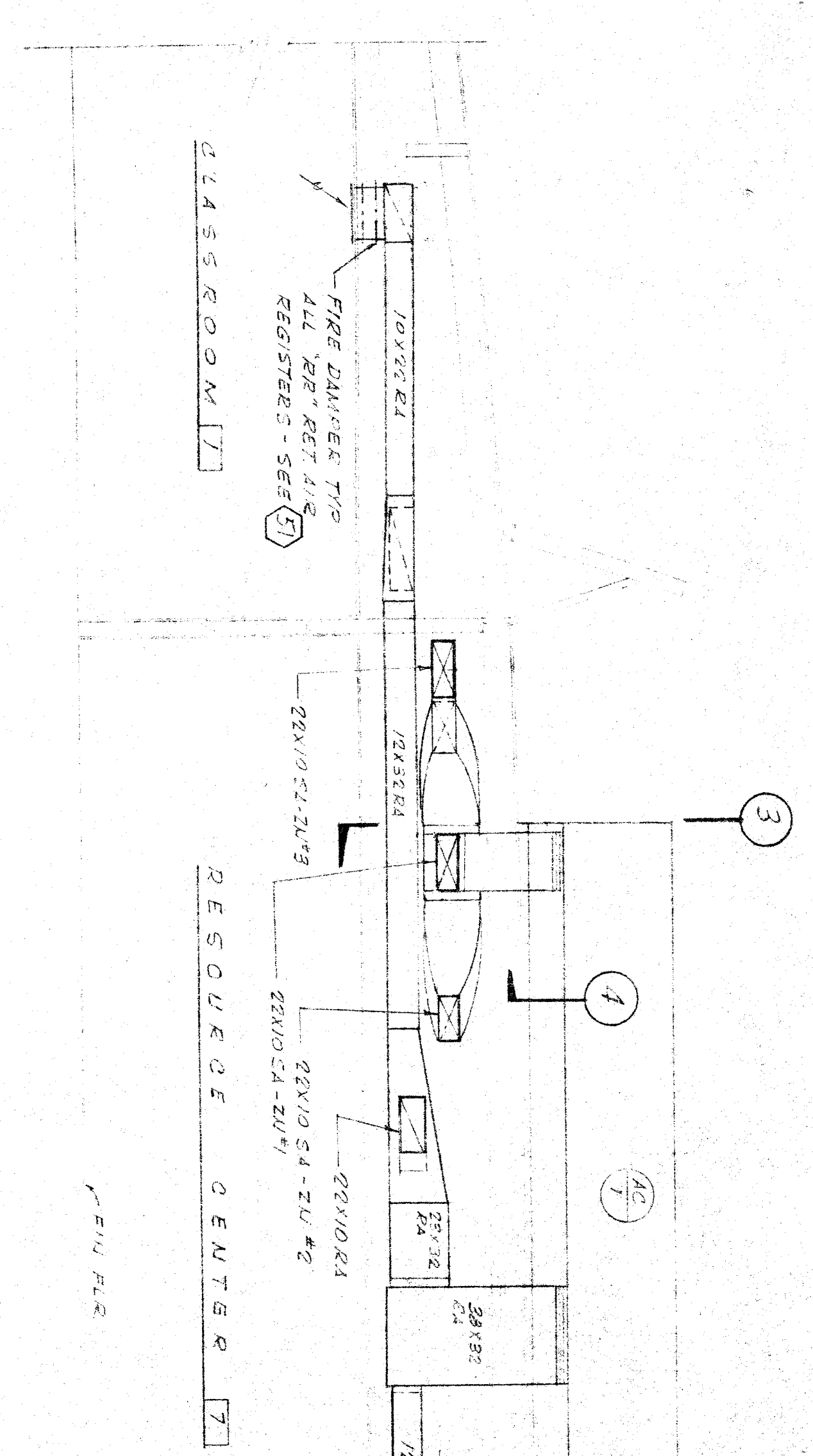
**AIRCONDITIONING UNIT SCHEDULE**

MARK		LEUJON	
MANUFACTURER	DAVIDSON	MODEL NO.	DAV-51-275
BTU INPUT	350,000	BTU OUTPUT	375,000
CATALOG NO.	DAV-350	GTW	7500
GTW	7500	SEA MG. EXTERNAL	0.7
HIP	9	VOLTAGE & PHASE	440V/3P
BLOWER WHEEL DIA & WIDTH	18" / 18"	BLUW SPEED	2330 RPM
BLUW SPEED	2330 RPM	BLUW LIEHT MIN	35,000
BLUW LIEHT MAX	44,000	COIL FACE AREA	14.1
COIL FACE AREA	14.1	NO OF ROWS	6
NO OF ROWS	6	TUBE DIA	1/2"
TUBE DIA	1/2"	FINS PER INCH	13
FINS PER INCH	13	MIN OUTSIDE AIR	2000
MIN OUTSIDE AIR	2000	CATALOG NO.	EMW-51-275V
CATALOG NO.	EMW-51-275V	TOTAL COOLING @ 45° SATURATION	244,000
TOTAL COOLING @ 45° SATURATION	244,000	VOLTAGE & PHASE	440V/3P
VOLTAGE & PHASE	440V/3P	TOTAL WEIGHT	4375
TOTAL WEIGHT	4375	NO OF ZONES	7
NO OF ZONES	7	OUTSIDE AIR TEMP	105°F DB
OUTSIDE AIR TEMP	105°F DB	INDSIDE AIR TEMP	72°F WB
INDSIDE AIR TEMP	72°F WB	EAT @ EVAPORATOR	50°F DB
EAT @ EVAPORATOR	50°F DB	EAT @ CONDENSER	85°F DB
EAT @ CONDENSER	85°F DB	SUCTION TEMP @ 100% EAT @ COND	50°F
SUCTION TEMP @ 100% EAT @ COND	50°F	DESIGN COND & COOLING COE	

1 THE FOLLOWING OUTDOOR AIR SHALL BE INCLUDED & SHALL BE SUPPLIED BY ROUPMENT INSTALLATION:  
 2 THE HEATING WIRELESS IGNITION, 2-5 HSE COOLING-TIME PROGRAM CLOCK W/ WEEKEND SWG BY PASS TIMER TO OVER RIDE TIME CLOCK.  
 3 HONEYWELL SERIES 90 ZONE CONTROL, LOW AMBENT CONTROL, DUAL PRESSURE CONTROL, POWER SAVING CONTROL SYSTEM, STEER FAN, TRANSPORTATION CONTROL SYSTEM, STEER FAN W/ TRANSFORMER, 100% EAT @ COND.  
 4 CONDENSING UNIT SHALL BE UL LISTED.  
 5 ENTIRE UNIT SHALL BE AS A APPROVED.  
 6 COMPRESSORS SHALL CHARGE FACTORY 5 YEAR WARRANTY ON PARTS & LABOR.  
 7 STARTERS SHALL HAVE 5-PHASE 5-LEG PROTECTION.

**ZONE SCHEDULE**

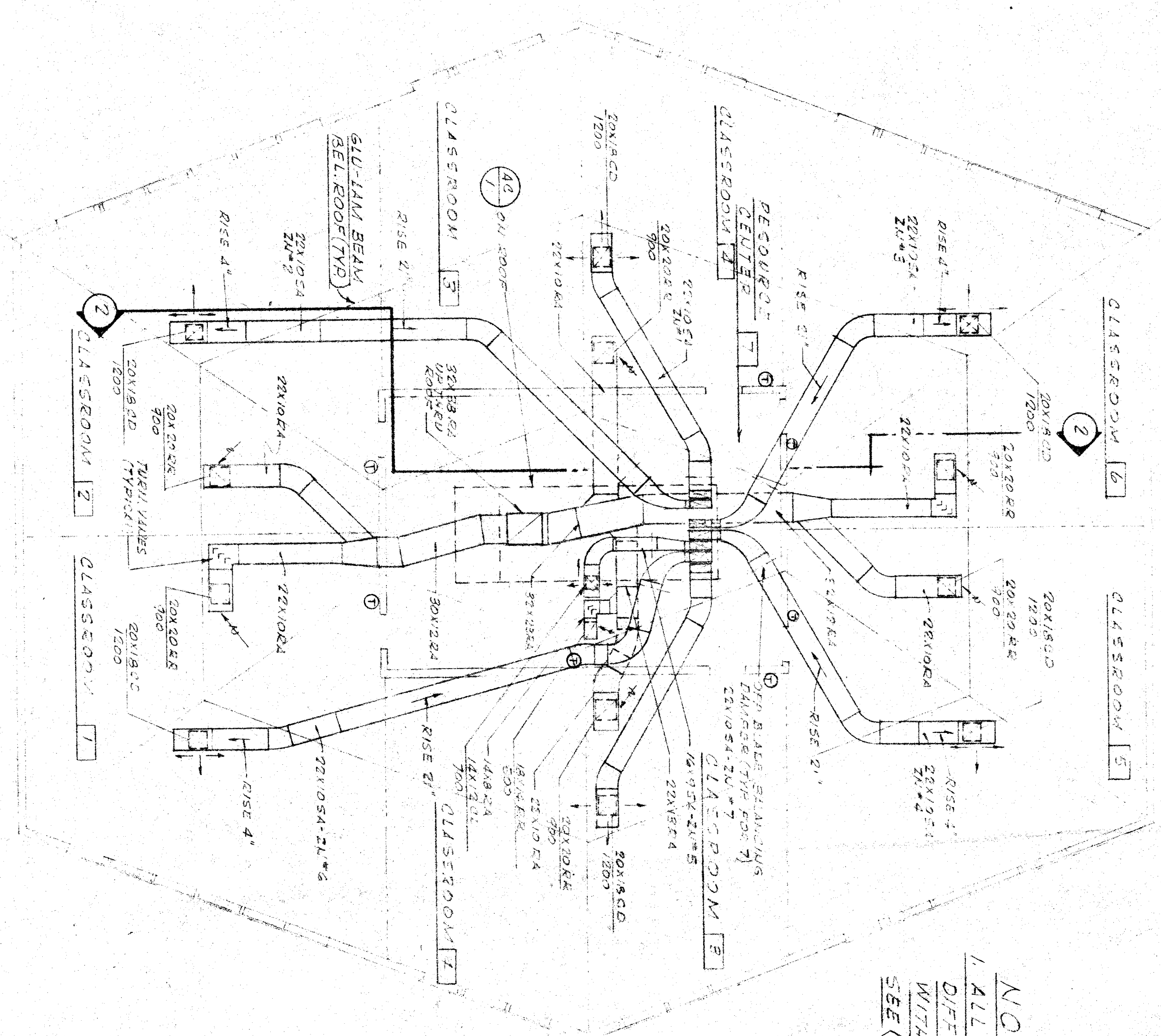
ZONE NO	COOL	HEAT
1	CLASSROOM # 2	1200
2	CLASSROOM # 3	1200
3	CLASSROOM # 4	1200
4	CLASSROOM # 5	1200
5	RESOURCE CENTER # 7	1200
6	CLASSROOM # 6	1200
7	CLASSROOM # 7	1200



**REGISTER SCHEDULE**

MARK	TYPE	AIRFLOW CATALOG NO
CD	CELLUS DIFFUSER	ESD-08D-KO
RD	RETURN AIR REGISTER	RA-08D-KO

ALL REGISTERS & DIFFUSERS SHALL BE AIRFLOWERS SIZE THROUGH CEILING AS SHOWN ON DRAWINGS AND AS FOLLOWS:



WALTER DAVIS  
 CIVIL ENGINEER  
 3011 BROADWAY  
 OAKLAND, CALIF. 94612  
 JUN 11 1983  
 3 0 5 6 7 APPROVED JUN 11 1983  
 GEORGE B. STUHR  
 ARCHITECT  
 3121 CALIFORNIA AVE.  
 BAKERSFIELD, CALIF. 93311  
 PHONE 327-1832

CHECK AND SIGNATURE OF ARCHITECT BEFORE PROCEEDING WITH THE WORK. REPORT DISCREPANCIES TO THE ARCHITECT.  
 JAMES H. DAVIS  
 CIVIL ENGINEER  
 3011 BROADWAY  
 OAKLAND, CALIF. 94612  
 JUN 11 1983  
 G.E.D. E. S.K.A. 655  
 MECHANICAL ENGINEER W/REG. CALIF.  
 BAKERSFIELD, CALIFORNIA  
 WALTER DAVIS  
 CIVIL ENGINEER  
 3011 BROADWAY  
 OAKLAND, CALIF. 94612  
 JUN 11 1983

BAKERSFIELD CITY SCHOOL DISTRICT  
 BOARD OF EDUCATION  
 JOB NO. 27562  
 APPROVED  
 NOV 8 1982  
 DR. M. J. GILBERT  
 CH. REP. A.S.  
 DAVID L. GILBERT  
 CH.

**ROBERT F. STUHR**  
 ARCHITECT  
 3121 CALIFORNIA AVE.  
 BAKERSFIELD, CALIF. 93311  
 PHONE 327-1832

**AIRCONDITIONING PLAN & DETAILS**  
 CLASSROOM BLDG. ADD'G FREEMONT SCH. DISTRICT  
 BAKERSFIELD, CALIFORNIA  
 SHEET NO. 12