

Donald W. Renfro, AIA
C13788
Mimi E. Russell, AIA
C13787
C. E. Berman, AIA
C12861
Kenneth A. Kula, AIA
C17780
Jeffrey P. Krasusek, AIA
C16834
Tommy W. Renfro, AIA
C12883
Larry G. Wiggins, AIA
C12814

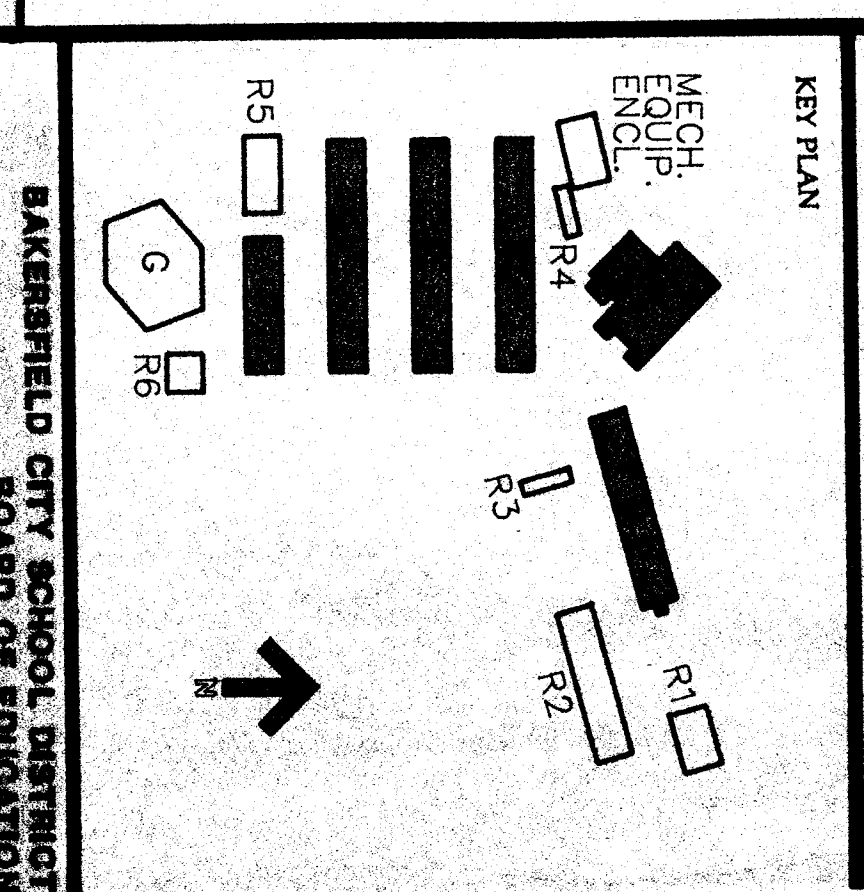
Renfro-Russell & Associates, Inc.
4000 Broadway, Suite 300, Denver, Colorado 80202
Tel: 303.733.1100 Fax: 303.733.1101

- INT. ELEVATION NOTES**
1. TOPSET BASE AT VINYL FLOORING
 2. 6" COVER CERAMIC TILE BASE
 3. REPAIR OR REPLACE ANY CRACKS, SPALLS, DENTS & OTHER SURFACE DEFECTS ON EXPOSED (E) CONCRETE
 4. PATCH CRACKS, SPALLS, DENTS & OTHER SURFACE DEFECTS ON EXPOSED (E) CONCRETE WITH MATCHING PORTLAND CEMENT MORTAR
 5. VINYL COVERED TACKABLE WALL PANELS
 6. CERAMIC TILE
 7. PATCH WITH PLASTER TO MATCH ADJACENT WALL SURFACE MATERIAL AND TEXTURE
 8. PATCH WITH PLYWOOD TO MATCH ADJACENT WALL SURFACE MATERIAL AND TEXTURE
 9. REPAIR OR REPLACE ANY CRACKS, SPALLS, DENTS & OTHER SURFACE DEFECTS ON EXPOSED (E) CONCRETE WITH MATCHING PORTLAND CEMENT MORTAR
 10. 4" X 10" CHALKBOARD
 11. 4" X 8" CHALKBOARD
 12. 4" X 12" CHALKBOARD
 13. PROVIDE AND INSTALL VINYL PLASTIC IMPREGATED CORE BOARD WITH ALUM. TRIM
 14. PROVIDE AND INSTALL LAMINATE PLASTIC CABINET AND ADJUSTABLE SHELVES
 15. PROVIDE AND INSTALL LAMINATE PLASTIC BOOKCASE
 16. REPAIR OR REPLACE EXISTING CABINET FRAMES, SHELVES, DRAWERS, DOORS AND DRAWER FACES WHERE THEY OCCUR
 17. REPAIR OR REPLACE EXISTING CABINET FRAMES, SHELVES, DRAWERS, DOORS AND DRAWER FACES WHERE THEY OCCUR
 18. REPAIR OR REPLACE EXISTING CABINET FRAMES, SHELVES, DRAWERS, DOORS AND DRAWER FACES WHERE THEY OCCUR
 19. UNIT VENTILATOR (REFER TO MECHANICAL PLANS)
 20. ELECTRICAL PLUG STRIP (REFER TO ELEC. PLANS)
 21. TOILET PAPER DISPENSER
 22. TOILET PAPER DISPENSER
 23. TOILET (REFER TO PLUMBING PLANS)
 24. URINAL (REFER TO PLUMBING PLANS)
 25. LAVATORY (REFER TO PLUMBING PLANS)
 26. SOAP DISPENSER
 27. PAPER TOWEL DISPENSER
 28. MIRROR
 29. NAPKIN DISPOSAL
 30. TOILET PARTITION
 31. GRAB BAR
 32. TOILET SEAT COVER DISPENSER

BAKERSFIELD CITY SCHOOL DISTRICT
FREMONT ELEMENTARY SCHOOL MODERNIZATION

PROJECT
BAKERSFIELD CITY SCHOOL DISTRICT
FREMONT ELEMENTARY SCHOOL
MODERNIZATION

DATE 9-3-91
APPROVED
DATE 9-3-91
ISSUED FOR BUILDING

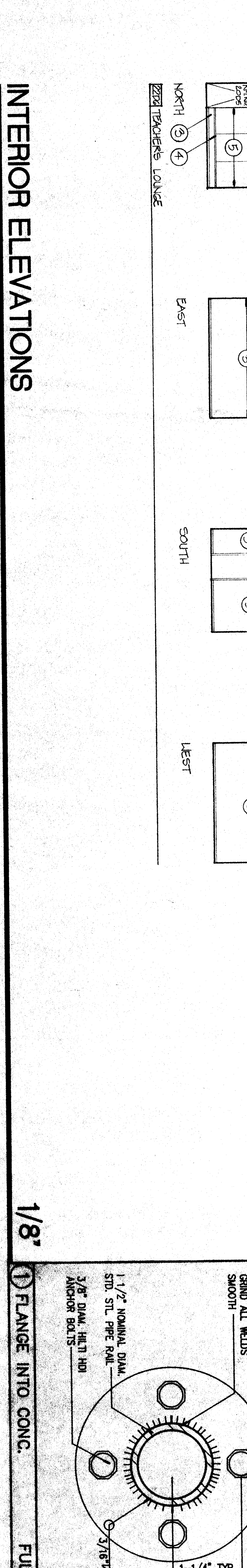
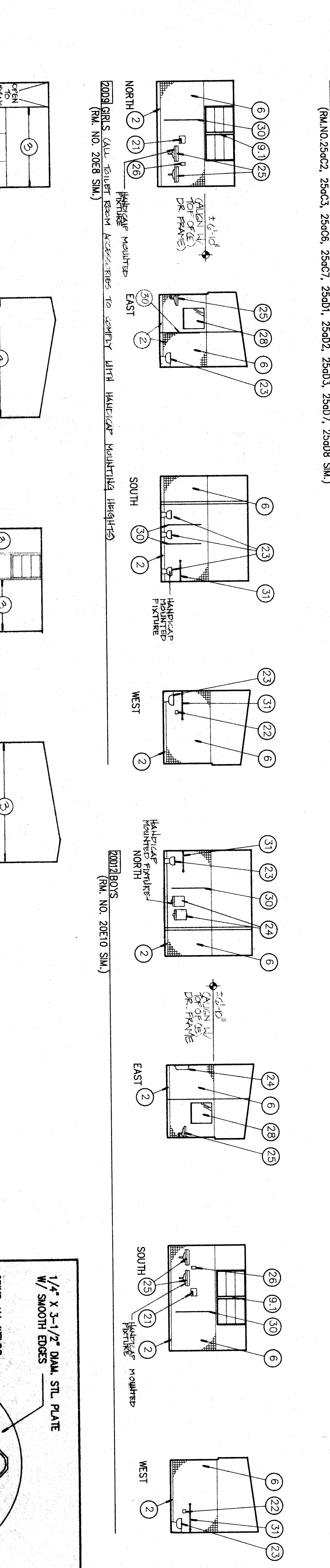
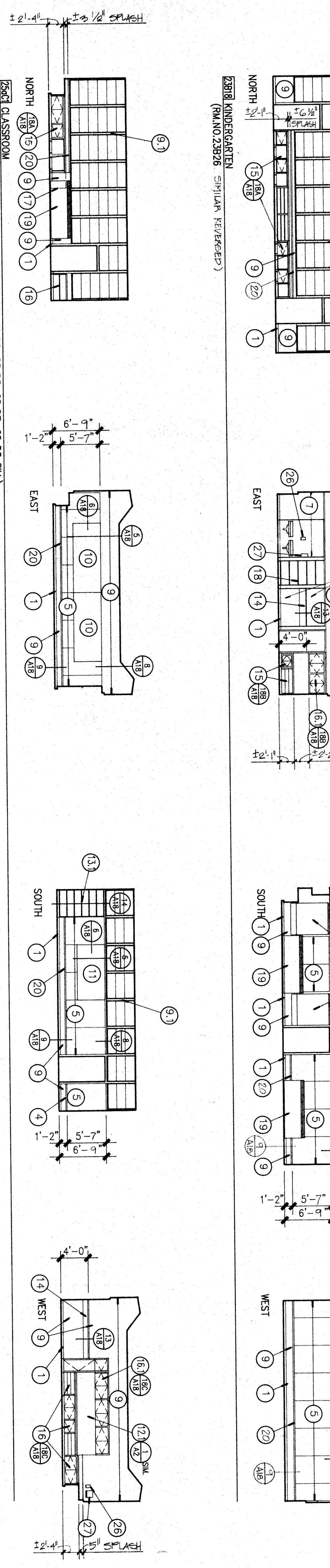
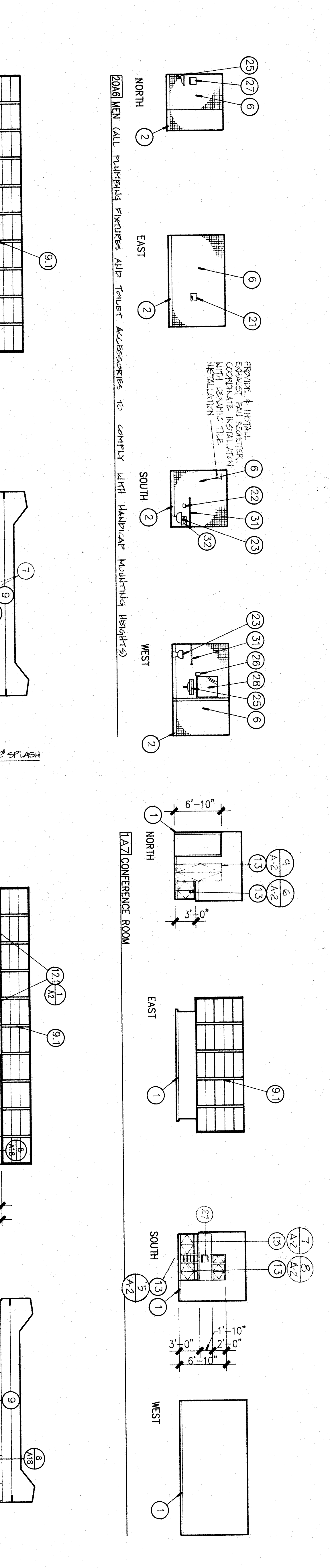
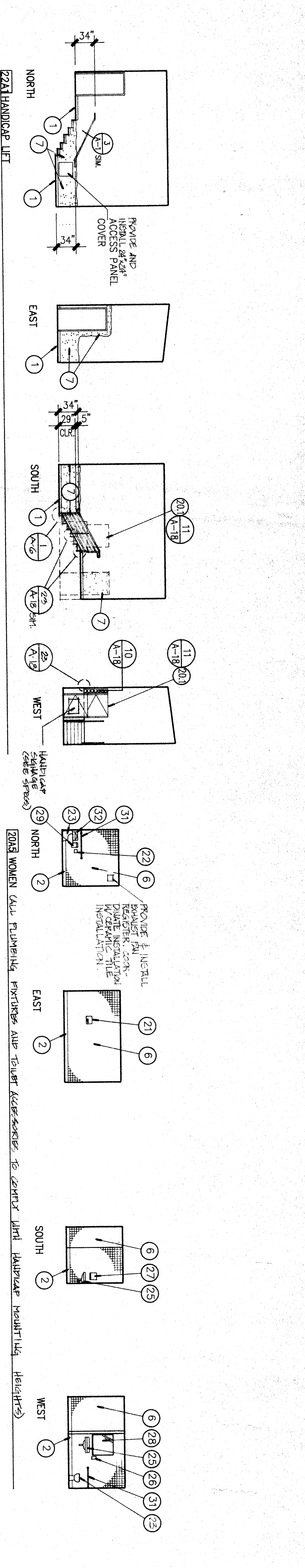


REVISIONS

DATE	REVISIONS
9-3-91	BUILDING

APPROVED ARCHITECT
Tommy W. Renfro
C12883
CHECKED TWP
DWR
6-1-91
DRAWN BY
ESS
86-2167M
SHEET NUMBER
8628CA72486

DATE 9-3-91
ISSUED FOR BUILDING



INTERIOR ELEVATIONS

NOTE: (REFER TO MECHANICAL DRAWINGS FOR LOCATION AND DETAIL OF BAROMETRIC RELIEF VENTS)

1/8" FLANGE INTO CONC. FULL