

FLEWELLING & MOODY
architects for education

HEADQUARTERS OFFICE:
147 South La Brea Avenue, 2nd Floor
Pasadena, California 91101
Tel: 626.799.8888 Fax: 626.799.8889
E-Mail: info@flewellinmoody.com

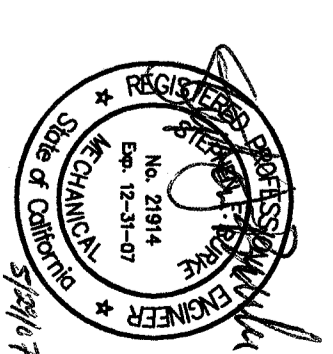
ANTelope VALLEY OFFICE:
1901 West 12th Street
Lodi, California 95241
Tel: 209.337.1111 Fax: 209.337.1112
E-Mail: info@flewellinmoody.com

An Equal Opportunity Employer

ARCHITECT



CONSULTANT



AGENCY

IDENTIFICATION STAMP
DIV. OF THE STATE ARCHITECT
APPROX 11.06.98
AC/THS
DATE JUN 03 2007

No.	Date	Description

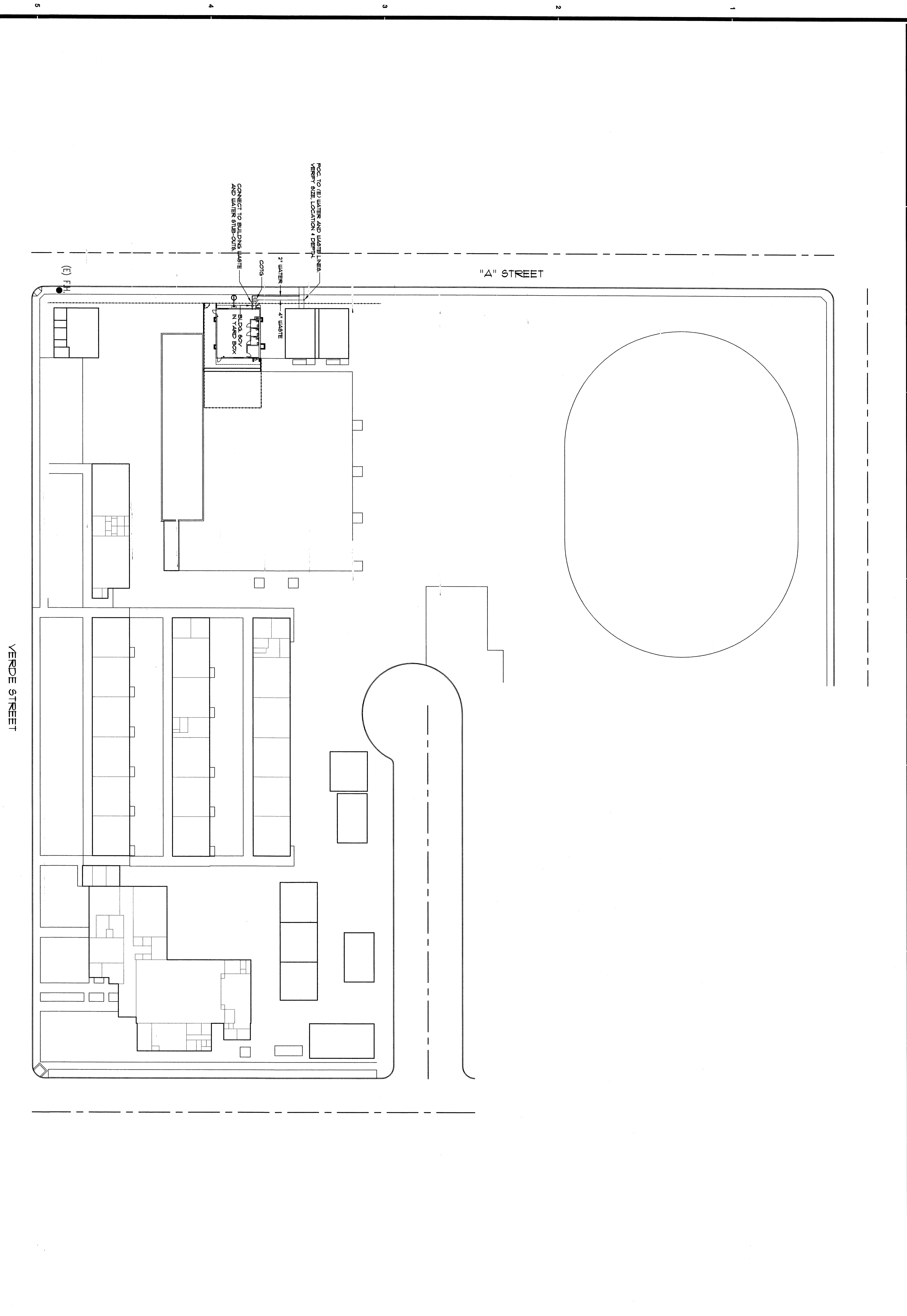
Drawn by MA
Checked by SB
Revisions

BAKERFIELD CITY SCHOOL DISTRICT
2304 VERDE STREET
BAKERFIELD, CA

ROOSEVELT
PLUMBING
SITE PLAN

Job No. 2271
Date 5-10-2007

P10



PLUMBING SITE PLAN
SCALE: 1"=30'-0"
N