

FA SYMBOL LIST MATRIX

SYMBOL	DEVICE	MFR. & CAT. N.	REMARKS	CFR# LISTING
Ⓢ	SMOKE DETECTOR	NOTIFIER 2151	PROVIDE BASE BLDG LP ON 450 DEEP BOX	1212-16531122
Ⓜ	HORN STROBE (WALL MOUNT)	WHEEL LOCK AS-24MCM-75cd	PROVIDE 450 DEEP BOX	1125-01851131
Ⓜ ^{ext}	EXTERIOR HORN	WHEEL LOCK MT 12/24 75cdBA	PROVIDE 450 DEEP BOX	1135-01851119
Ⓢ	HEAT DETECTOR (IN ATTIC SPACE)	NOTIFIER 5602	PROVIDE 450 DEEP BOX	1210-16531167
Ⓜ	STROBE (WALL MOUNT)	WHEEL LOCK RSS-24MCM-FR	PROVIDE 450 DEEP BOX	1125-01851141
■	PULLSTATION	NOTIFIER NBS-12	PROVIDE 450 DEEP BOX	1150-00281194
■	NAC POWER SUPPLY	NOTIFIER FCPS-2458	PROVIDE 1M BATTERY	1315-00281225

VOLTAGE DROP CALCS

WIRE DATA : USING #12 AWG. THIN WIRE AT 6530 CIR. MILS.
 (N) BOOSTER PANEL, TO NOTIFICATION CIRCUIT #1
 (HORN) EOL DEVICE

HORN O.108A
 HORN / STROBE = 0.200A
 STROBE LIGHT 30cd 0.092A = 0.216A
 SUBTOTAL = 0.584A

VOLTAGE DROP = $2 \times 0.584A \times 103FT \times 2.05 = 0.25V$
 1000
 % VD = 0.25V / 24V x 100% = 1.04%

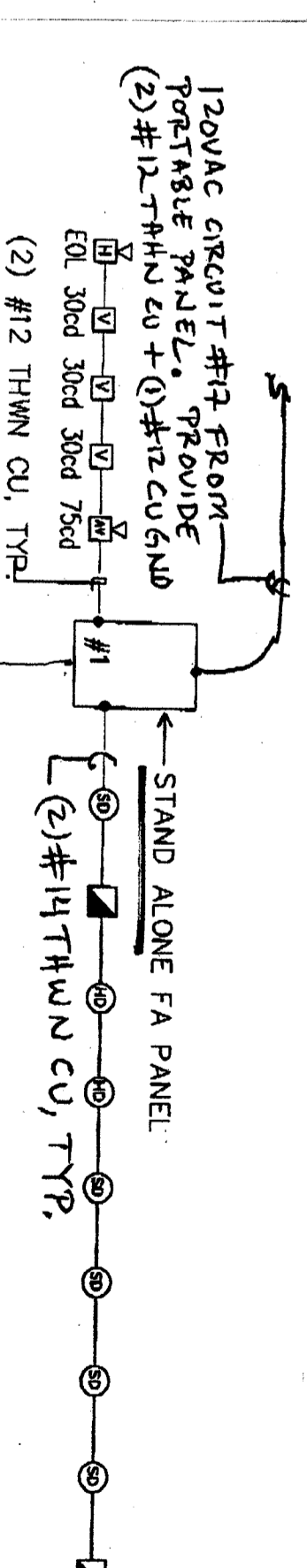
BATTERY CALCS

STAND BY
~~ESS-2458~~
~~SFP-2404~~
 STAND ALONE FA PANEL = 0.001A
 NAC POWER SUPPLY = 0.090A
 SUBTOTAL = 0.091A
 x 24 HOURS = 4.92AH
 0.096AH

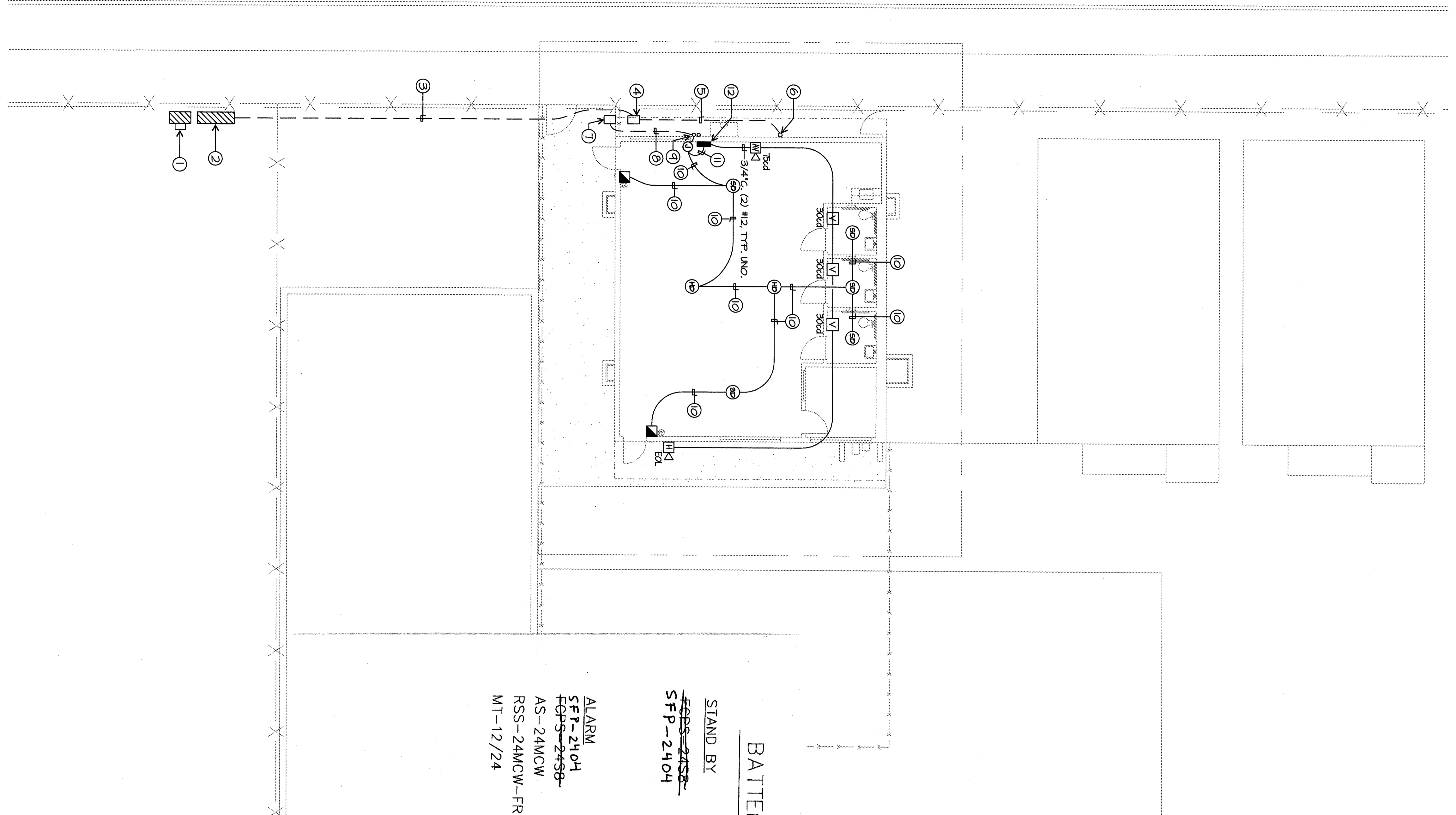
ALARM
 SFP-2404
 ESS-2458
 AS-24MCM
 RSS-24MCM-FR
 MT-12/24
 STAND ALONE FA PANEL = 0.015
 NAC POWER SUPPLY = 0.240
 HORN STROBE 75cd = 0.200 x 1 = 0.200A
 STROBE 30cd = 0.092 x 3 = 0.276A
 WP HORN = 0.108 x 1 = 0.108A
 SUBTOTAL = 0.599A
 x 5min (0.0833) = 0.069AH
 0.046AH + 0.050AH = 0.146AH
 1.92AH + 0.069AH = 1.989AH
 1.2 x 1.989AH = 2.387AH
 SYSTEM BATTERY = 7.0AH
 SPARE = 4.6AH = 6.0AH

98/31/2097 11:21 8825592495

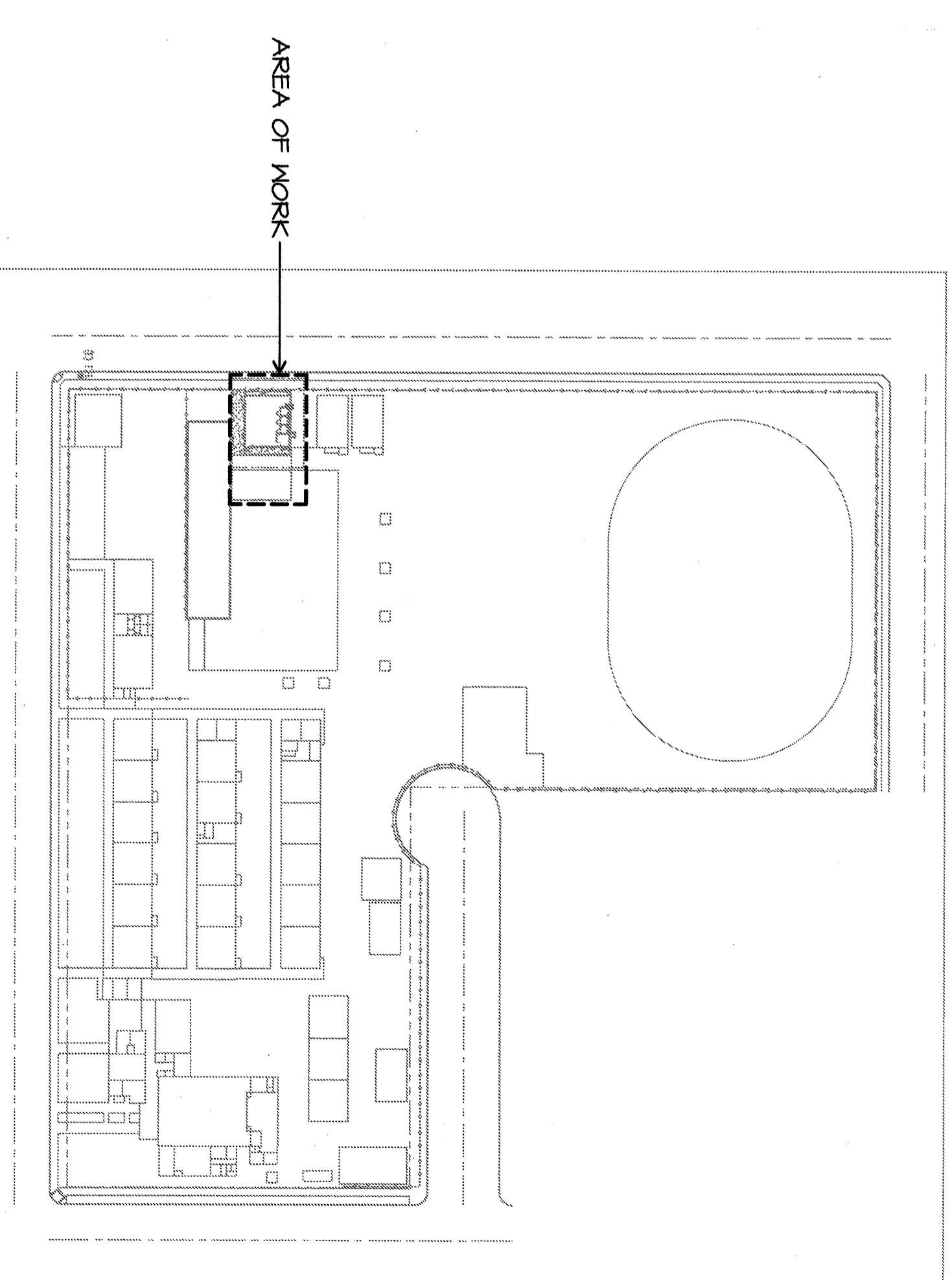
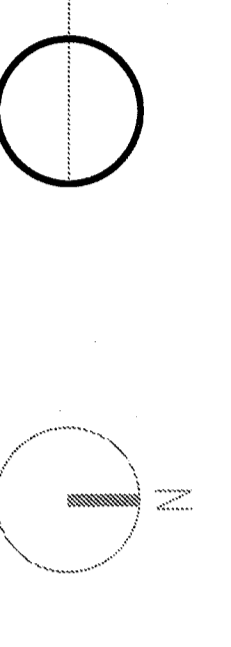
- ELECTRICAL NOTES
- Ⓢ R64E METER/MAN #3044R1
 - Ⓢ 400A, 120/240V, 1PH, 3M PANEL BOARD
 - Ⓢ UNDERGROUND POWER FEEDER
 - Ⓢ WITH (3) #2 & (1) #8 CU GND
 - Ⓢ FUSE ELECTRICAL PULLBOX. INTERCEPT FUSE FEED AND EXTEND AS CALLED FOR IN NOTE #5.
 - Ⓢ (N) 1-1/2" C. IN 3#2 THIN CU & #8 CU GND
 - Ⓢ RISE UP TO ELECTRICAL PANEL FURNISHED WITH PORTABLE SEE PORTABLE CONNECTION DETAIL ON THIS SHEET. COORDINATE EXACT LOCATION IN FIELD WITH PORTABLE IN PLACE.
 - Ⓢ COMMUNICATIONS AND FIRE ALARM PULLBOX
 - Ⓢ (N) 1-1/2" C. (COMMUNICATIONS) + (N) 1" C. IN (4) #14 THIN CU + (4) #12 THIN CU
 - Ⓢ LB FIRE ALARM AT ACCESSIBLE CEILING SPACE TO J-BOX IN ATTIC. SEE REAR ELEVATION DETAIL.
 - Ⓢ 3/4" C. (4) #14 THIN CU.
 - Ⓢ 3/4" C. (4) #12 THIN CU.
 - Ⓢ NAC POWER SUPPLY. SEE FA SYMBOL MATRIX.



FIRE ALARM RISER DIAGRAM



FIRE ALARM PLAN - ROOSEVELT ES.



KEY PLAN

Job No. 2211
 Date 5-10-2007
E-2

HEADQUARTERS OFFICE:
 14 South Lake Avenue, 2nd Floor
 Pasadena, California 91106
 Telephone: 626.799.3333
 Fax: 626.799.3334
 E-Mail: Info@antelopevalley.com

ANTelope VALLEY OFFICE:
 1033 West Lincoln Boulevard
 97001
 Telephone: 503.863.4444
 E-Mail: Info@antelopevalley.com

REGISTERED ARCHITECT
 STATE OF CALIFORNIA
 No. 81889

CONSULTANT
JMP&P
 REGISTERED PROFESSIONAL ENGINEERS
 LICENSE NO. 44523
 LICENSE NO. 21830
 LICENSE NO. 21831
 LICENSE NO. 21832

IDENTIFICATION STAMP
 DW. OF THE STATE ARCHITECT
 APR 03 11 06 98
 ARCH. FLS. SS SD
 DATE JUN. 05 2007

Checked by: _____
 Drawn by: _____

Revision:
 No. _____ Date _____ Description _____

BAKERFIELD CITY SCHOOL DISTRICT
 FIRE ALARM PLAN

1.38'x40' MODULAR PRESCHOOL BUILDING AT ROOSEVELT ES.
 2324 VERDE STREET
 BAKERFIELD, CA

Antelope Valley Architects & Planners, Inc.
 architects for education