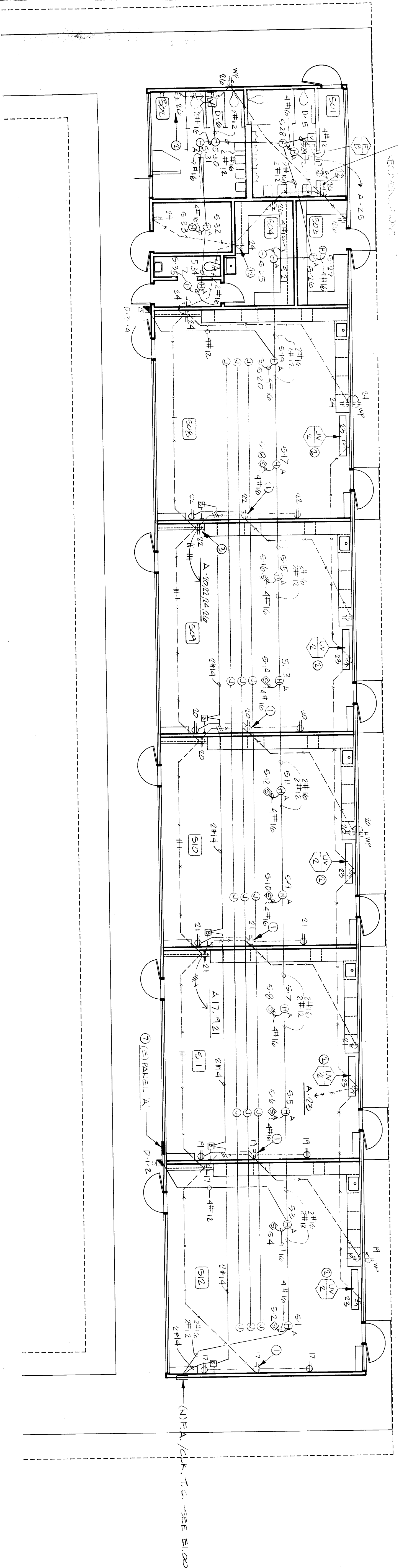
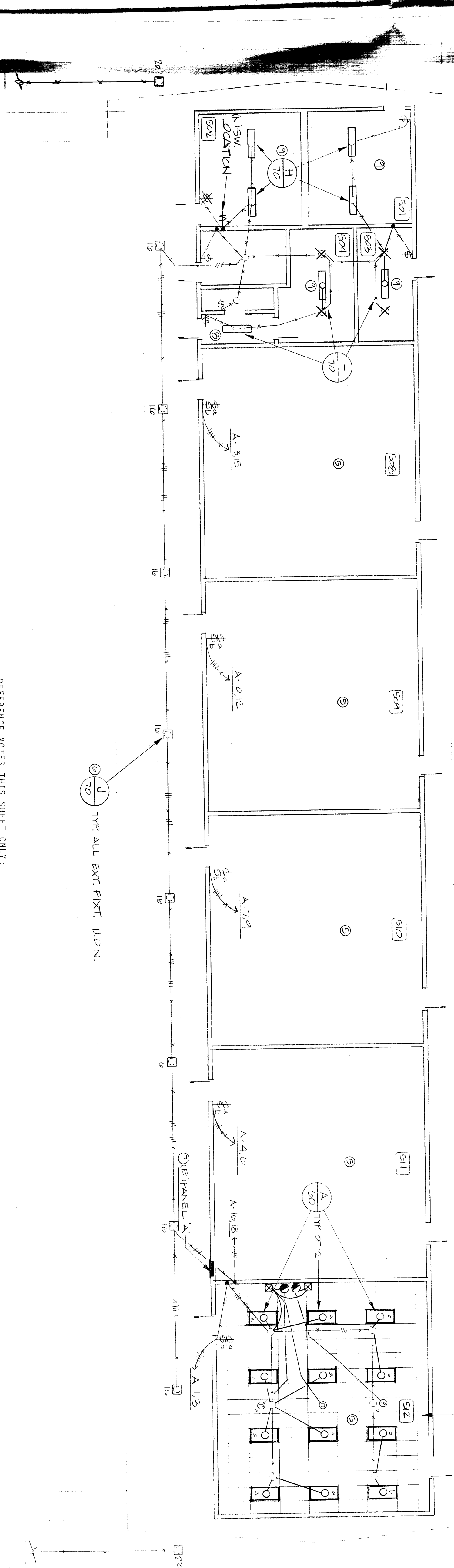


BUVA #10001  
 TRAVEL SWITCHES  
 TRAVEL SWITCH MANUFACTURER  
 REVISED 1/1/83



**BLDG. 500  
 POWER & SIGNAL FLOOR PLAN**  
 1/8" = 1'-0"



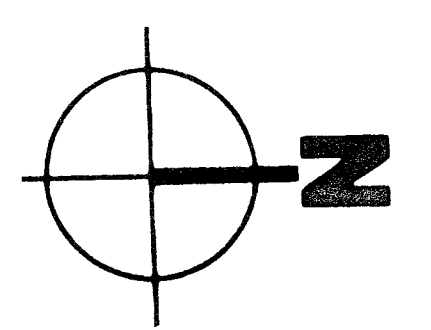
**BLDG. 500  
 LIGHTING FLOOR PLAN**  
 1/8" = 1'-0"

- REFERENCE NOTES, THIS SHEET ONLY:
- 1 EXTEND EXISTING OUTLET WITH WIREMOLD #9751, BOX AND INSTALL NEW SURFACE METAL RACEWAY - WIREMOLD #900 SERIES WITH ALL ACCESSORIES NECESSARY FOR PROPER INSTALLATION TO NEW SURFACE MOUNTED OUTLET. EACH #9751 AS SHOWN. RACEWAY TO BE PAINTED TO MATCH WALLS. TYPICAL EACH CLASSROOM.
  - 2 USE EXISTING R/C CIRCUIT FOR NEW UNIT VENTILATOR AS SHOWN. TYPICAL EACH CLASSROOM.
  - 3 INTERCEPT EXISTING RACEWAY AND INSTALL NEW HOMERUN AS SHOWN.
  - 4 EXISTING RACEWAY TO BE RECONNECTED TO NEW RACEWAY.
  - 5 REMOVE EXISTING CLASSROOM LIGHTING AND INSTALL NEW LIGHTING, SENSING AND CONTROL AS SHOWN. CLASSROOM OLD FIXTURES SHALL BE TURNED OVER TO OWNER. INSTALL NEW SWITCHES.
  - 6 RETROFIT CORRIDOR LIGHTING WITH NEW FIXTURES SHOWN. RECONNECT TO EXISTING SWITCHES.
  - 7 EXISTING PANEL, REFURBISHED. INSTALL NEW BUS BARS, CIRCUIT BREAKERS, MAIN BREAKER, ETC., IN EXISTING CAB.
  - 8 INSTALL NEW FIXTURES ON EXISTING OUTLETS. INSTALL NEW SWITCHES.
  - 9 INSTALL NEW LIGHT FIXTURES AND CONNECT TO EXISTING WIRING. REMOVE EXISTING FIXTURES AND BLANK OFF OUTLETS. INSTALL NEW LIGHT SWITCHES.
  - 10 CUT AND PATCH EXISTING WALLS TO CONCEAL ELECTRICAL WORK WHERE REQUIRED FOR INSTALLATION OF NEW DEVICES.
  - 11 REUSE EXISTING WIRING WHERE POSSIBLE.
  - 12 REPLACE EXISTING DUPLEX OUTLET WITH NEW GFCI TYPE DUPLEX AND COVER PLATE.

(B) PANEL A

CIRCUIT NUMBER	WIRING	USE	LOAD TYPE	CIRCUIT BREAKER	TYPE (B)		CIRCUIT WATTAGE
					LOAD TYPE	USE	
01	01	SPACER	NON-MOT	1	1	1	0
02	02	SPACER	NON-MOT	1	1	1	0
03	03	SPACER	NON-MOT	1	1	1	0
04	04	SPACER	NON-MOT	1	1	1	0
05	05	SPACER	NON-MOT	1	1	1	0
06	06	SPACER	NON-MOT	1	1	1	0
07	07	SPACER	NON-MOT	1	1	1	0
08	08	SPACER	NON-MOT	1	1	1	0
09	09	SPACER	NON-MOT	1	1	1	0
10	10	SPACER	NON-MOT	1	1	1	0
11	11	SPACER	NON-MOT	1	1	1	0
12	12	SPACER	NON-MOT	1	1	1	0
13	13	SPACER	NON-MOT	1	1	1	0
14	14	SPACER	NON-MOT	1	1	1	0
15	15	SPACER	NON-MOT	1	1	1	0
16	16	SPACER	NON-MOT	1	1	1	0
17	17	SPACER	NON-MOT	1	1	1	0
18	18	SPACER	NON-MOT	1	1	1	0
19	19	SPACER	NON-MOT	1	1	1	0
20	20	SPACER	NON-MOT	1	1	1	0
21	21	SPACER	NON-MOT	1	1	1	0
22	22	SPACER	NON-MOT	1	1	1	0
23	23	SPACER	NON-MOT	1	1	1	0
24	24	SPACER	NON-MOT	1	1	1	0
25	25	SPACER	NON-MOT	1	1	1	0
26	26	SPACER	NON-MOT	1	1	1	0
27	27	SPACER	NON-MOT	1	1	1	0
28	28	SPACER	NON-MOT	1	1	1	0
29	29	SPACER	NON-MOT	1	1	1	0
30	30	SPACER	NON-MOT	1	1	1	0
31	31	SPACER	NON-MOT	1	1	1	0
32	32	SPACER	NON-MOT	1	1	1	0
33	33	SPACER	NON-MOT	1	1	1	0
34	34	SPACER	NON-MOT	1	1	1	0
35	35	SPACER	NON-MOT	1	1	1	0
36	36	SPACER	NON-MOT	1	1	1	0
37	37	SPACER	NON-MOT	1	1	1	0
38	38	SPACER	NON-MOT	1	1	1	0
39	39	SPACER	NON-MOT	1	1	1	0
40	40	SPACER	NON-MOT	1	1	1	0
41	41	SPACER	NON-MOT	1	1	1	0
42	42	SPACER	NON-MOT	1	1	1	0
SUB-TOTAL							
TOTAL							

VOITS 120/208/240V MAIN (50/75) (N)  
 (E) FEEDER 200/400/480V  
 (N) BUS 225 A CU  
 SYSTEM SHORT CIRCUIT RATING (SYM)



**ROOSEVELT  
 SCHOOL  
 MODERNIZATION**

FOR  
**BAKERSFIELD CITY SCHOOL  
 DISTRICT**

**DR ARCHITECTS PLANNERS INC.**  
 P.O. Box 9898 Bakersfield California 93309  
 31 South real road 93309 (909) 332 8122

**DR ARCHITECTS PLANNERS INC.**  
 C-3132 K-0-0084 C-9021 C-8702

**BLDG. 500**

**2.05**

**DR ARCHITECTS PLANNERS INC.**  
 P.O. Box 9898 Bakersfield California 93309  
 31 South real road 93309 (909) 332 8122

**DR ARCHITECTS PLANNERS INC.**  
 C-3132 K-0-0084 C-9021 C-8702

