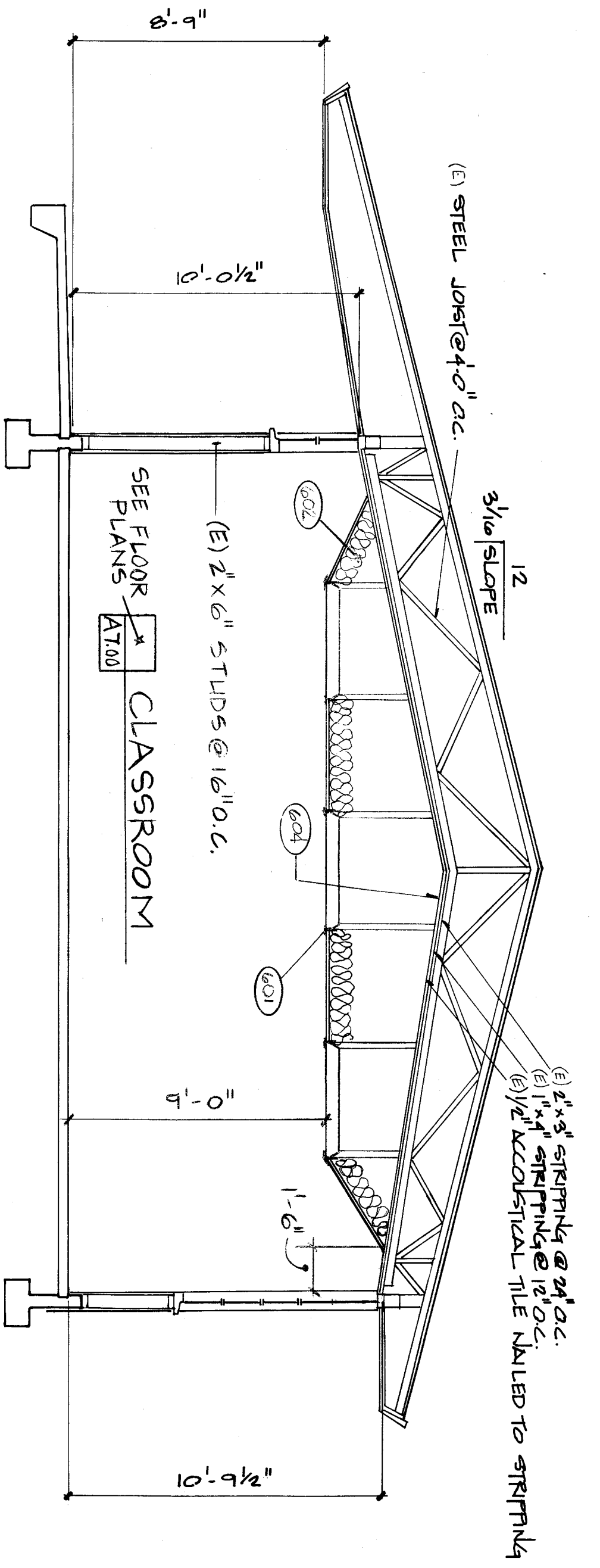


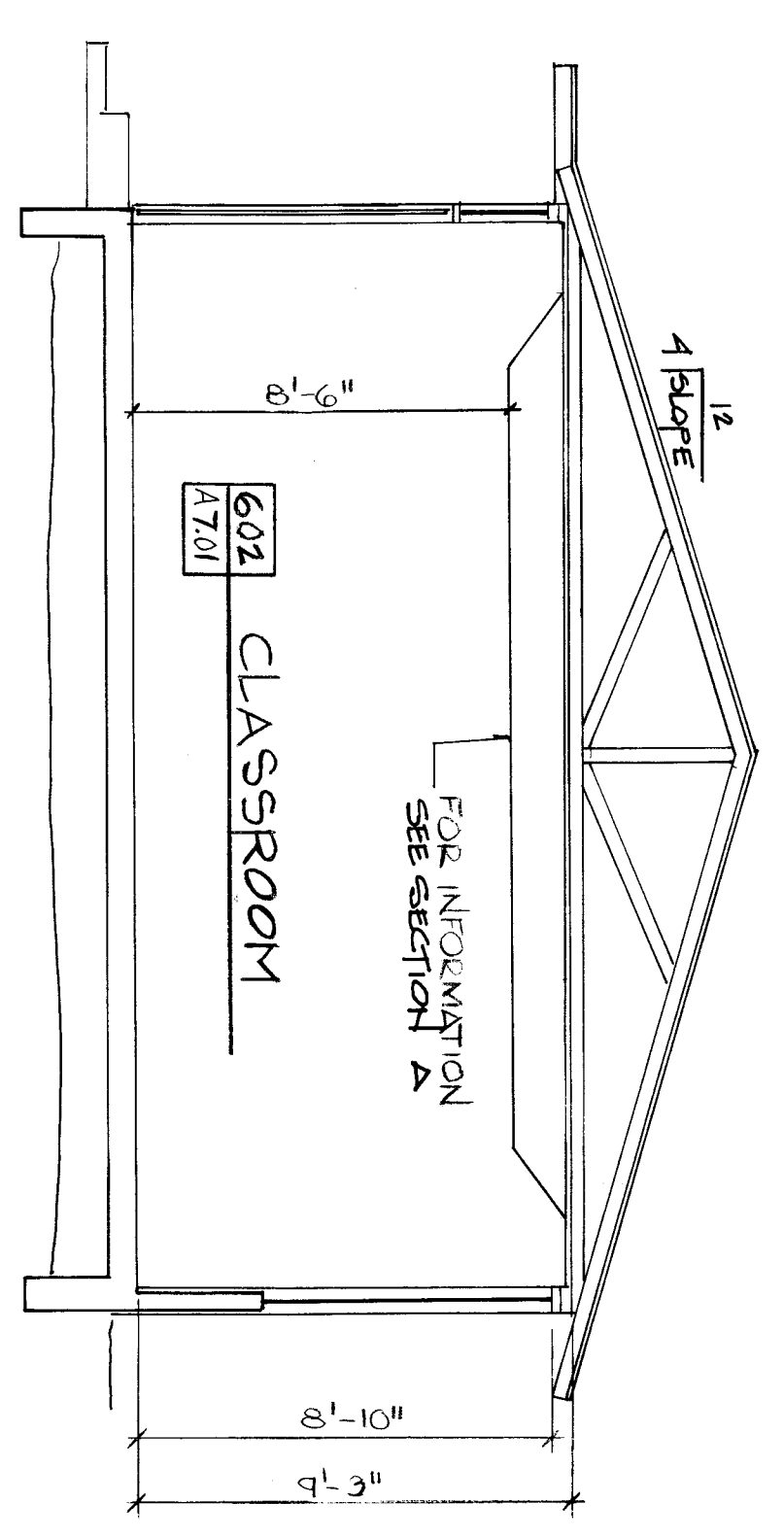
**KEY NOTES**

401. T & T SERRATED CEILING.  
 402. R-30 AIR INSULATION. SEE SPECIFICATIONS PK.  
 403. R-30 FIBERGLASS CEILING INSULATION.  
 404. (2) CEILING STRUTS TO BEAM.  
 405. REDUCE (2) CEILING MATERIAL PER STRUCTURAL DRAWINGS.



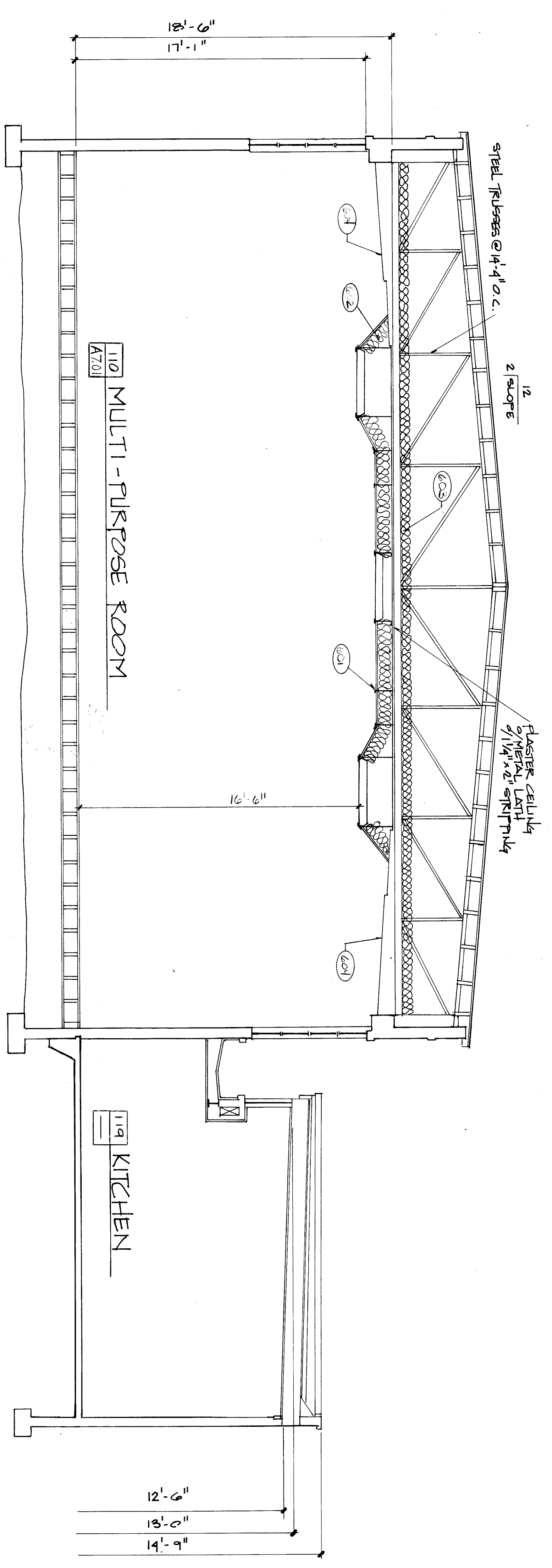
**SECTION A**  
 TYPICAL OF BLDGS. 200, 300, 400, & 500

1/4"



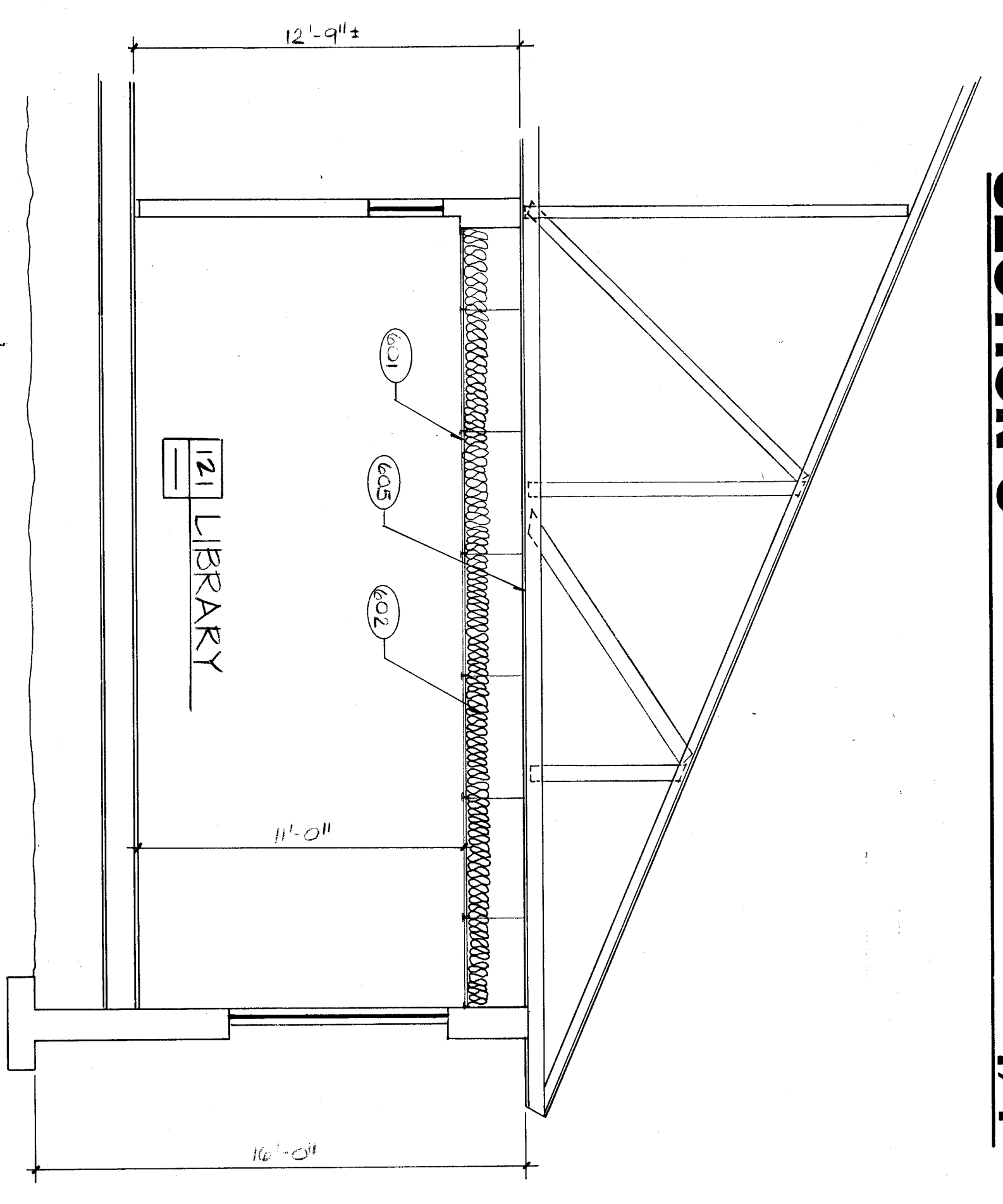
**BUILDING 600 SECTION B**

1/4"



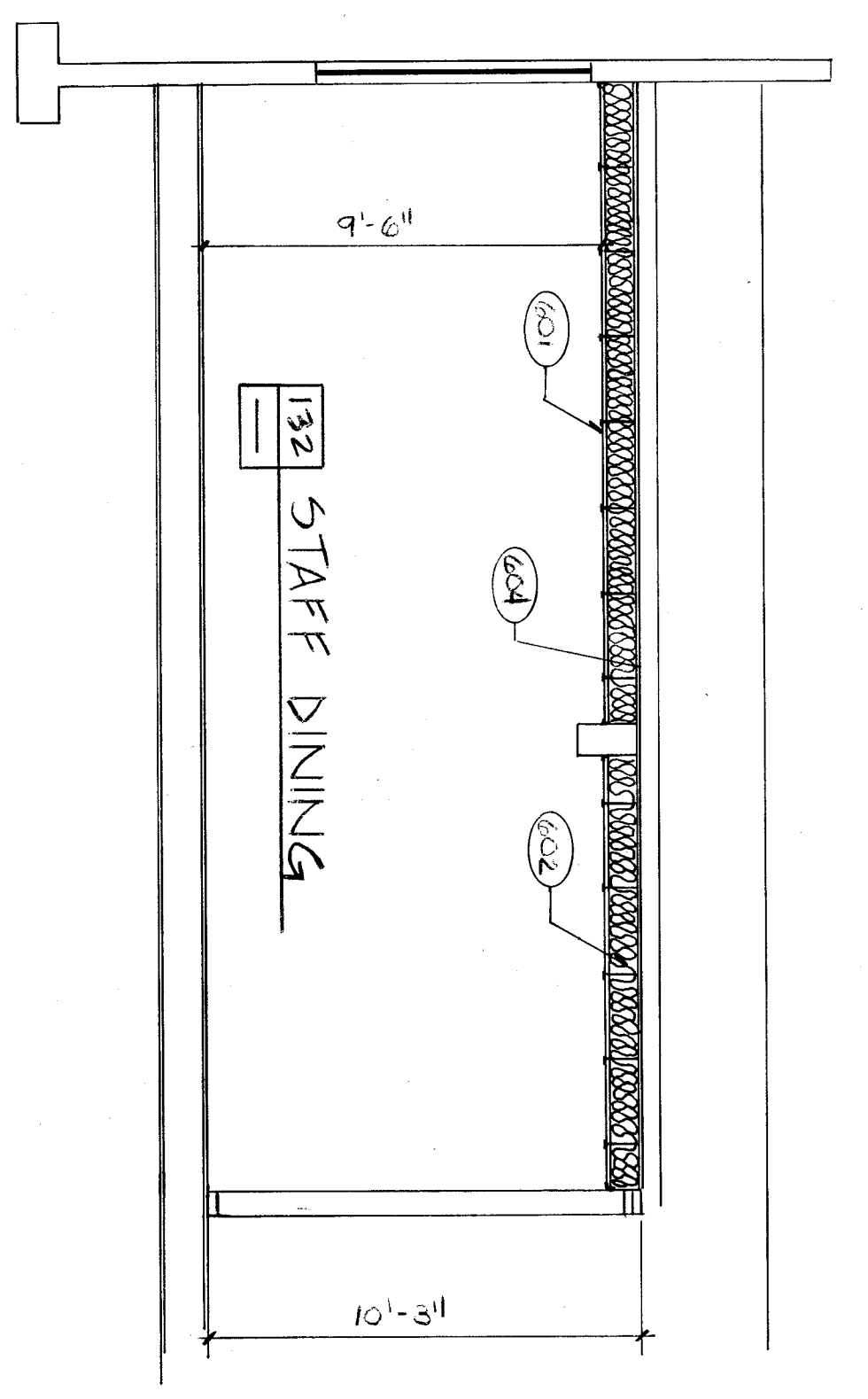
**BUILDING 100 SECTION C**

1/4"



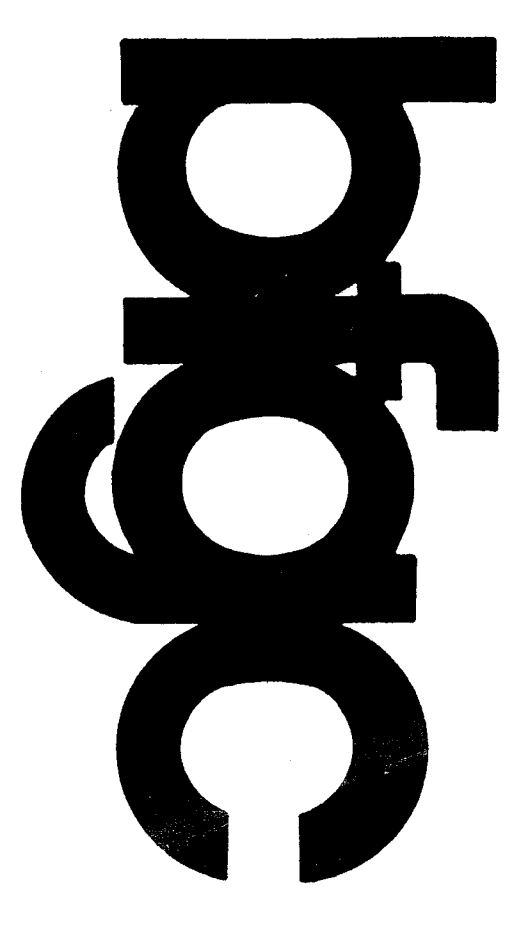
**BUILDING 100 SECTION D**

1/4"



**BUILDING 100 SECTION E**

1/4"



**ROOSEVELT SCHOOL MODERNIZATION**  
 FOR  
 BAKERSFIELD CITY SCHOOL DISTRICT

**BUILDING SECTIONS**

**bfgc architects planners inc.**  
 P.O. Box 8088 Bakersfield California 93388-8088  
 31 South Paul Road 93309 (805) 822-8122

**DR. KATK**  
 C-3132 JC-0564 C-8021 C-8702

job no.	88-142
date	20 JAN 1989
drawn by	T. WARREN
chk'd by	SCOTT
copyright	1989

