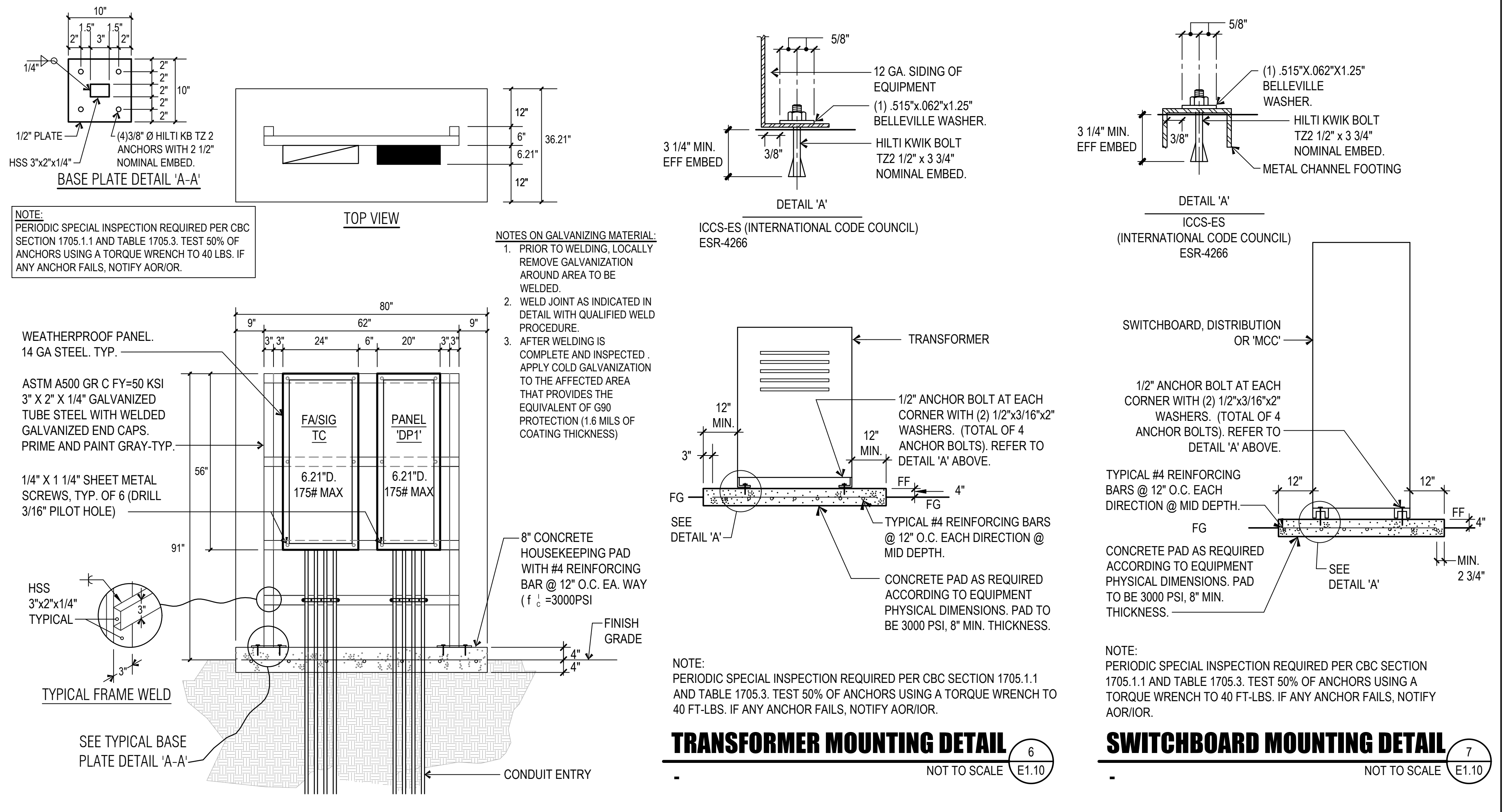


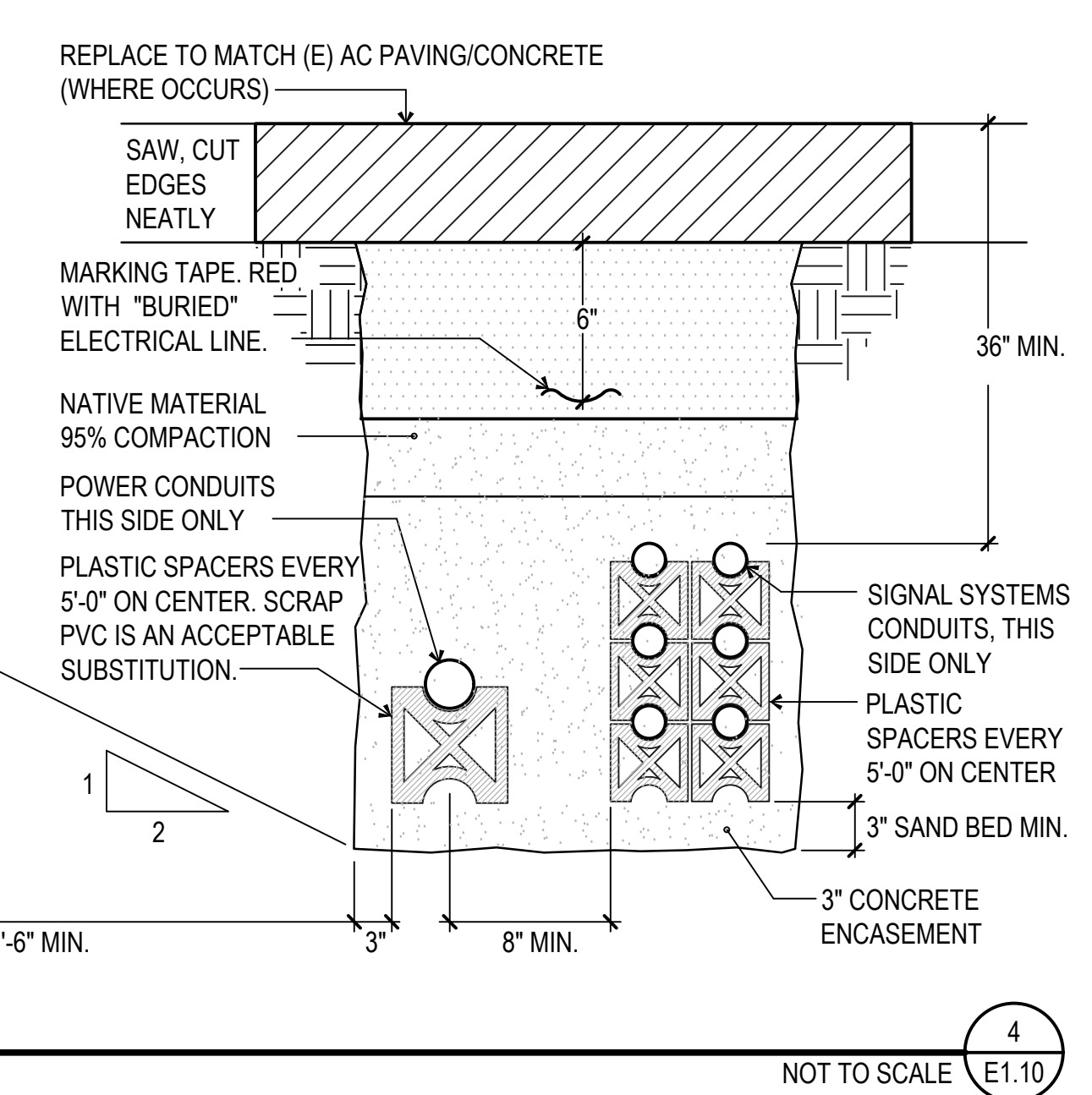
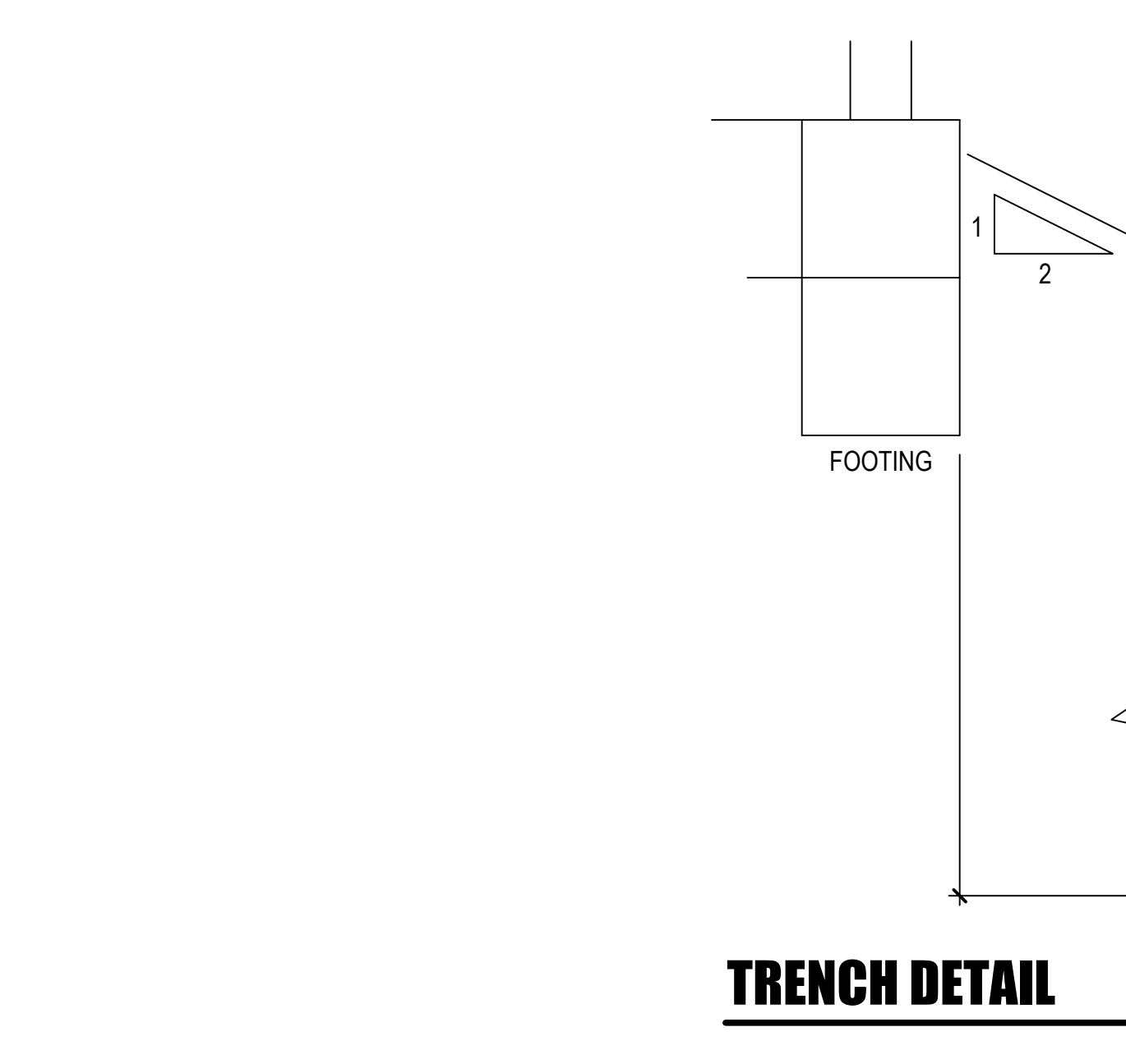
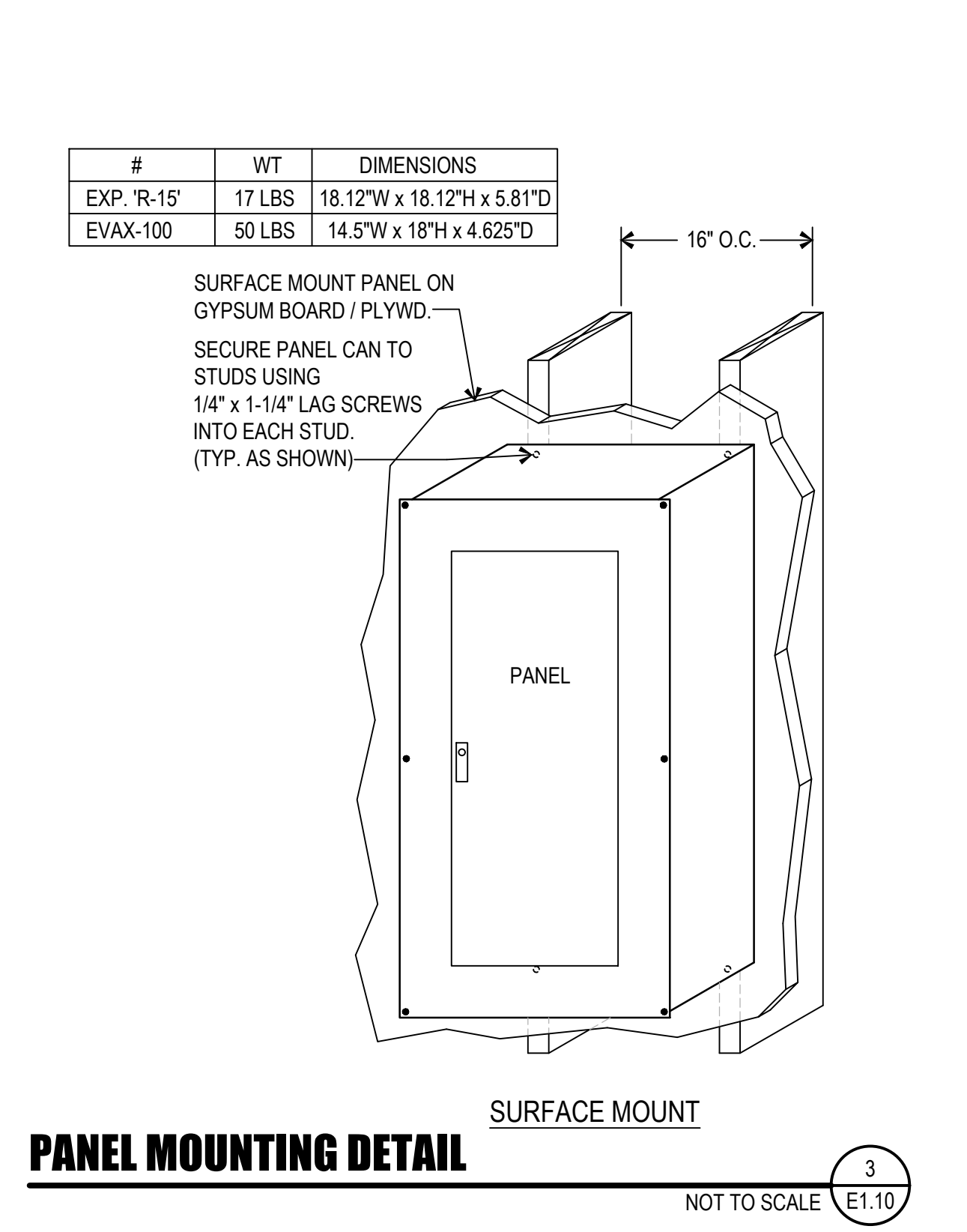
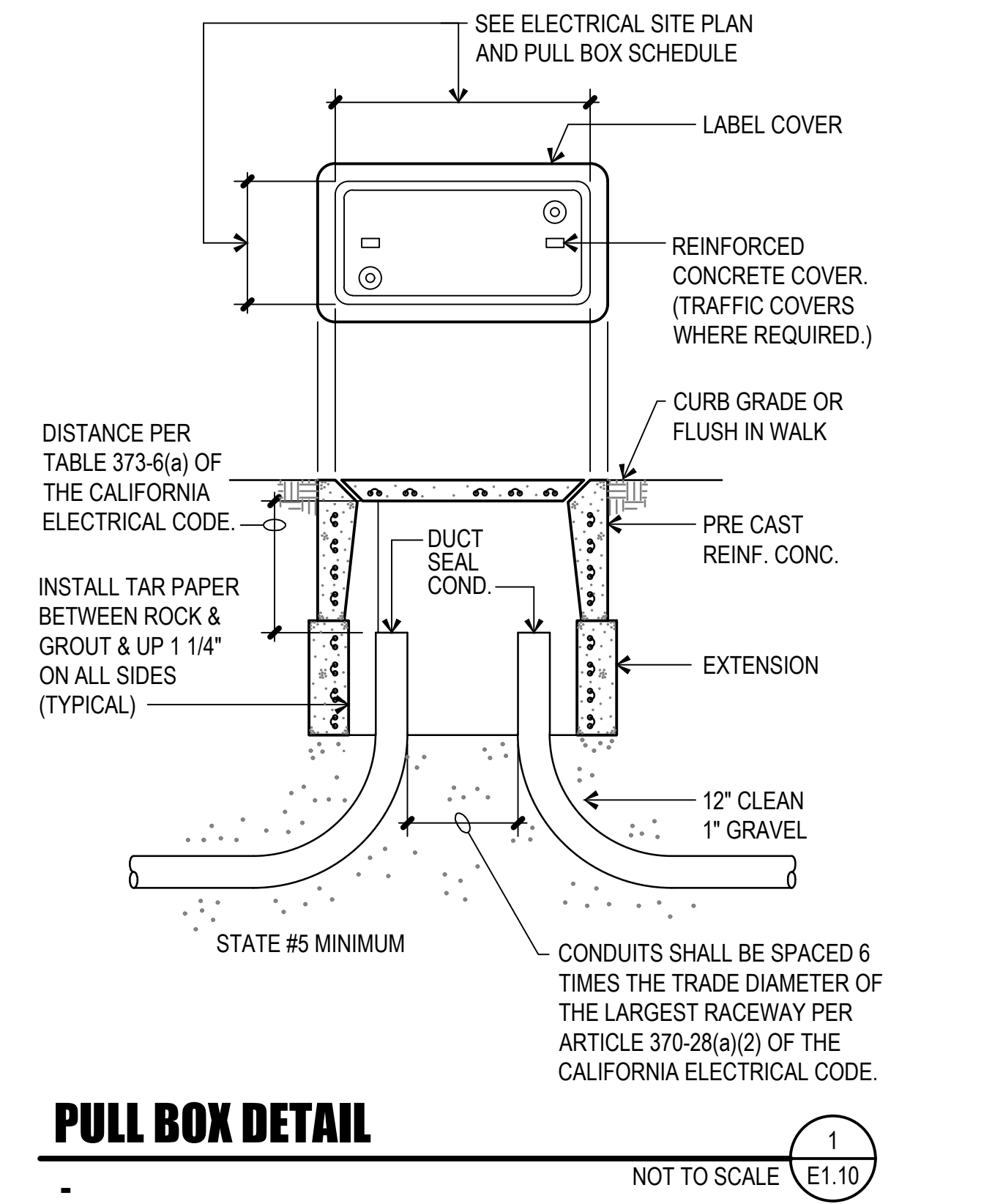
EQUIPMENT RACK DETAIL

NOT TO SCALE E1.10



EQUIPMENT RACK DETAIL

NOT TO SCALE E1.10



ELECTRICAL SINGLE LINE DIAGRAM

NOT TO SCALE E1.10

PTN: 63321-406 FILE: 15-6

(10) 24x40 PORTABLE CLASSROOMS

ROOSEVELT ELEMENTARY SCHOOL
FOR
BAKERSFIELD CITY SCHOOL DISTRICT
BAKERSFIELD, KERN COUNTY, CALIFORNIA

ARCHITECT

1601 NEW STINE ROAD, SUITE 280
BAKERSFIELD, CA 93309
PH: (661) 397-4377
FAX: (661) 397-4378
WWW.SCARCHITECT.COM

STEPHEN J. CORBIN, NCBAB, AIA, LEED[®]-AP

CHECK AND VERIFY ALL DIMENSIONS BEFORE PROCEEDING WITH THE WORK. REPORT DISCREPANCIES TO THE ARCHITECT. ALL CONSTRUCTION SHALL CONFORM TO THE C.B.C.

DPG

REGISTERED PROFESSIONAL ENGINEER
ELECTRICAL

ELECTRICAL SINGLE LINE, DETAILS AND SCHEDULES

MARK	DATE	REVISIONS

JOB NO. 1317.1

DRAWN BY: R.L.M.

CHECKED BY: D.P.G.

DATE: 4/4/23

1.10

OF SHEETS

AMPS	CONDUIT AND CONDUCTORS (THINWALL CU)				GROUNDINGS		
	PVC, EMT OR GR	10 3W (13)	30 3W (33)	30 4W (34)	30 5W (35)	NYLON (NPL) PER CONDUIT	(THINWALL) COPPER PER CONDUIT
30	3/4"	3 #10	3 #10	4 #10	1	#10	#10
40	3/4"	3 #8	3 #8	4 #8	1	#10	#10
50	1"	3 #6	3 #6	4 #6	1	#10	#10
60	1"	3 #6	3 #6	4 #6	1	#10	#10
70	1 1/4"	3 #4	3 #4	4 #4	1	#8	#8
80	1 1/4"	3 #3	3 #3	4 #3	1	#8	#8
90	1 1/4"	3 #2	3 #2	4 #2	1	#8	#8
100	1 1/2"	3 #1	3 #1	4 #1	1	#8	#8
125	1 1/2"	3 #1	3 #1	4 #1	5 #1	#8	#8
150	2"	3 #10	3 #10	4 #10	1	#4	#4
175	2"	3 #20	3 #20	4 #20	1	#4	#4
200	2"	3 #30	3 #30	4 #30	1	#4	#4
225	2 1/2"	3 #40	3 #40	4 #40	1	#2	#2
250	3"	3 #50	3 #50	4 #50	1	#2	#2
300	3 1/2"	3 #50 Kcmil	3 #50 Kcmil	4 #50 Kcmil	1	#2	#2
400	4"	3 #60 Kcmil	3 #60 Kcmil	4 #60 Kcmil	1	#10	#10
500	4 1/2"	3 #75 Kcmil (EA)	3 #75 Kcmil (EA)	4 #75 Kcmil (EA)	1	#10	#10
600	(2) 3 1/2"	3 #50 Kcmil (EA)	3 #50 Kcmil (EA)	4 #50 Kcmil (EA)	1	#10	#10
700	(2) 4"	3 #60 Kcmil (EA)	3 #60 Kcmil (EA)	4 #60 Kcmil (EA)	1	#10	#10
800	(2) 4 1/2"	3 #75 Kcmil (EA)	3 #75 Kcmil (EA)	4 #75 Kcmil (EA)	1	#10	#10
1000	(3) 3 1/2"	3 #40 Kcmil (EA)	3 #40 Kcmil (EA)	4 #40 Kcmil (EA)	1	#10	#10
1200	(4) 3 1/2"	3 #50 Kcmil (EA)	3 #50 Kcmil (EA)	4 #50 Kcmil (EA)	1	#10	#10
1600	(4) 4"	3 #60 Kcmil (EA)	3 #60 Kcmil (EA)	4 #60 Kcmil (EA)	1	#10	#10
2000	(5) 4"	3 #60 Kcmil (EA)	3 #60 Kcmil (EA)	4 #60 Kcmil (EA)	1	#10	#10

NOTE: 30 SW FEEDERS ARE 0A, 0B, 0C AND TWO NEUTRAL CONDUCTORS FOR NON- LINEAR LOAD APPLICATIONS.