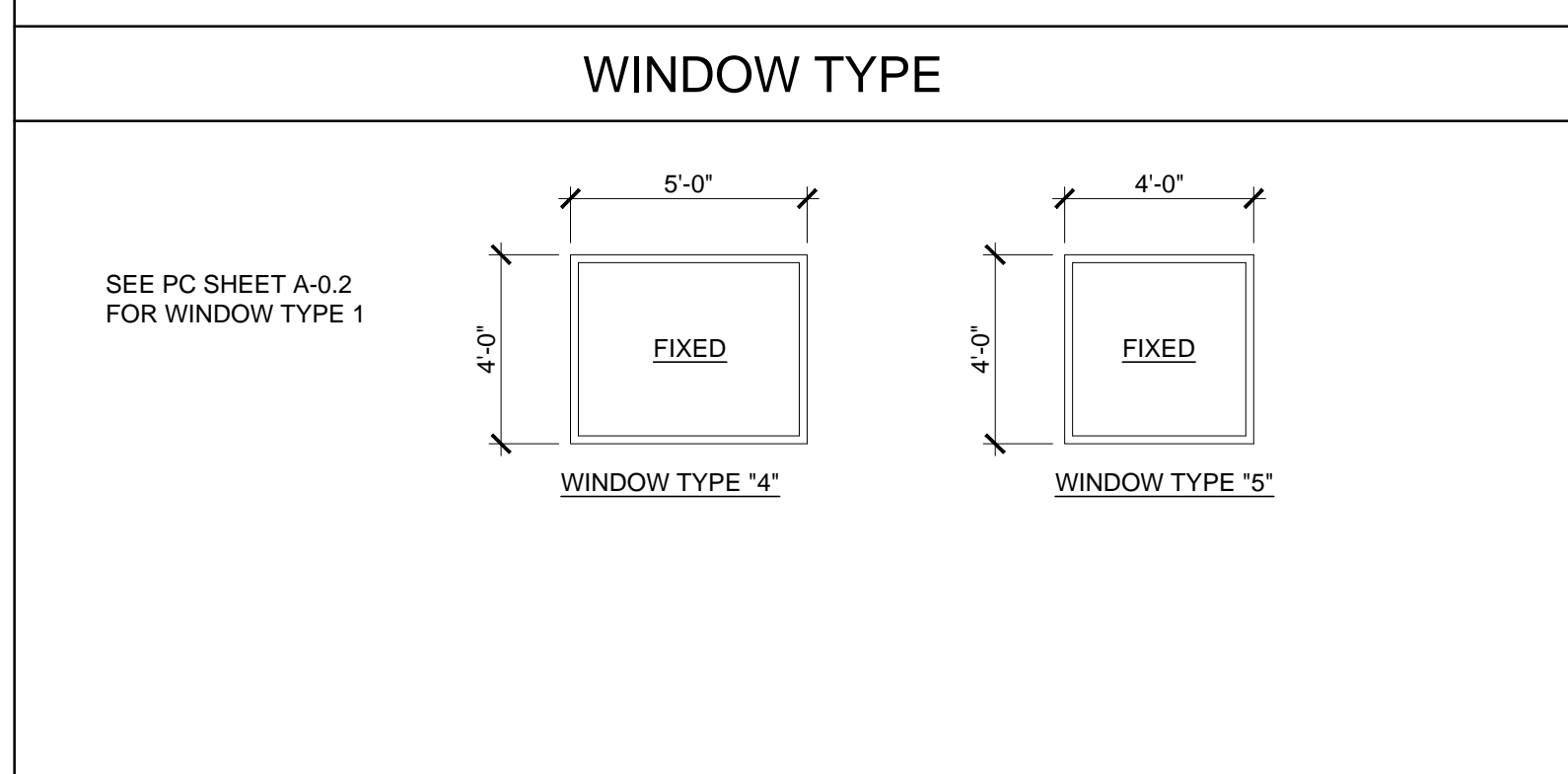


WINDOW SCHEDULE									
WINDOW NO.	QTY	TYPE	WIDTH	HEIGHT	FUNCTION	FRAME MATERIAL	GLASS MATERIAL	WALL THICKNESS	NOTES
A		1	8'-0"	4'-0"	XOX	ANOD	DP		
B		4	5'-0"	4'-0"	FIXED	ANOD	DP		
C		5	4'-0"	4'-0"	FIXED	ANOD	CLEAR TEMPERED		INTERIOR WINDOW

WINDOW FINISH

ANOD: CLEAR ANODIZED ALUMINUM FRAME DP: 3/16" MINIMUM DUAL PANE TEMPERED GLASS OF SOLAR GRAY - 3/16" ENERGYSHIELD, ALL OPERABLE SASH SHALL HAVE SCREENS. (U-FACTOR = .510 MAX, VT = 0.500 MIN., SHGC = .350 MAX, STC = 36 MIN.)
 BRONZ: BRONZE ANODIZED ALUMINUM FRAME
 PAINT: PAINTED FRAME
 WF: 16GA WELDED FRAME
 FRW: FIRE RATED WINDOW FRAME. MIN 0.048" THICK WELDED FRAME
 FRG: FIRE RATED GLAZING: 1/4" WIRED GLASS. LABELED TO MEET THE REQUIREMENTS FOR A 3/4 HOUR FIRE WINDOW ASSEMBLY PER CBC SECTION/TABLE 715.5



DOOR SCHEDULE									
DOOR NO	WIDTH	HEIGHT	DOOR TYPE	QTY	DOOR MAT/FIN	FRAME MAT/FIN	HARDWARE SET	WALL THICKNESS	NOTES
1	3'-0"	7'-0"	A		HM	KD	HW - 8		
2	3'-0"	7'-0"	A		SCL	KD	HW - 7		

DOOR MATERIAL AND FINISH ABBREVIATIONS

HM: 18GA HOLLOW METAL KD: KNOCK DOWN FRAME * EXTERIOR DOORS TO BE UNINSULATED SINGLE LAYER DOORS
 WF: 16GA WELDED FRAME SCL: SOLID CORE WOOD LEGACY W/ U-FACTOR OF 0.500 MAX
 AL: ALUMINUM HC: HOLLOW CORE WOOD
 SST: STAINLESS STEEL PT: PAINTED

DOOR TYPES & NOTES

SEE PC SHEET A-0.2

FINISH SCHEDULE												
ROOM NAME	FLOORING		WALL FINISH				CEILING		NOTES			
	FLOOR	BASE	FRONT	LEFT	REAR	RIGHT	CEILING	CEILING HT				
SMALL GROUP INSTRUCTION [101]	CARP	4' TS	TACK	TACK	TACK	TACK	CP-755B	8'-6" VAULTED				
OFFICE [102-103]	CARP	4' TS	TACK	TACK	TACK	TACK	CP-755B	8'-6" VAULTED				

FLOOR, WALL, CEILING MATERIALS

FLOORING
 CARP: CARPET PER STATE OF CALIFORNIA SPECIFICATIONS COMPLYING WITH GROUP 1; TYPE 'A' OR TYPE 'B'; CLASS 2; DENSITY 4600; DIRECT GLUE DOWN
 SV: SHEET VINYL FLOORING
 VCT: VINYL COMPOSITION TILE

BASE
 4' TS: 4" TOP SET BASE
 6' TS: 6" TOP SET BASE
 SC: 6" SELF-COVE BASE

WALLS
 TACK: 1/2" VINYL TACKBOARD CLASS 1 OVER 1/2" GYPSUM BOARD BACKING
 FRP: 1/8" FIBER REINFORCED PANEL OVER 1/2" WATER RESISTANT GYPSUM BOARD
 GYP: 1/2" GYPSUM BOARD; TAPE; TEXTURE: PAINTED FINISH
 PLY: 1/2" PLYWOOD FINISH
 NF: NO FINISH

CEILING
 CP: ACOUSTICAL LAY IN GRID CEILING PANELS (SEE SPECIFICATION NOTES ON REFLECTED CEILING PLAN)
 HC: 5/8" GYPSUM BOARD; TAPE; TEXTURE: PAINTED FINISH (HARD LID CEILING)
 GBP: 1/2" GYPSUM BOARD WASHABLE PANELS (PAINTED)

FINISH NOTES

SEE PC SHEET A-0.2

DOOR HARDWARE

OFFICE -	INTERIOR DOOR HW-7
LOCKSET: YALE 5407 LN	Finish 26D or equal
BUTTS: HAGER BB1168 NRP 4 1/2" x 4 1/2"	Finish 26D or equal
SMALL GROUP INSTRUCTION	EXTERIOR DOOR HW-8
LOCKSET: YALE AU5417LN 626 W/LF YALE IC CORES	Finish 626 or equal
BUTTS: PEMKO CHS83HDI FULL HT. HINGES	Finish 26D or equal
CLOSURE: NORTON 750 SERIES	Finish 689 or equal
WEATHER STRIP: HAGER 891SAV 3684	Finish Alum or equal
THRESHOLD: PEMKO	Finish Alum or equal
DOOR BOTTOM: PEMKO 368 N DOOR SWEEP	
DOOR HOLDER: TRIMCO 1254 (INSTALL AT +78"A.F.F.)	

INSULATION SPECIFICATIONS

SEE PC SHEET A-0.2

THESE DRAWINGS AND ALL MATERIAL CONTAINED HEREIN ARE THE PROPERTY OF SILVERCREEK INDUSTRIES, INC (SCI Inc) AND SHALL NOT BE REPRODUCED, COPIED OR OTHERWISE DISPOSED OF DIRECTLY OR INDIRECTLY AND SHALL NOT BE USED IN WHOLE OR IN PART TO ASSIST IN THE MAKING OF OR FOR THE PURPOSE OF FURNISHING ANY INFORMATION FOR THE MAKING OF DRAWINGS, PRINTS, APPARATUS OR PARTS THEREOF WITHOUT THE FULL KNOWLEDGE AND WRITTEN CONSENT OF SCI Inc.
 ALL PATENTABLE MATERIAL CONTAINED HEREIN AND ORIGINATING WITH SCI Inc SHALL BE THE PROPERTY OF SCI Inc



PROJECT NAME:
24x40 STOCKPILE OFFICE BUILDING

SHEET TITLE:
PROJECT SPECIFIC SCHEDULES

ARCHITECT OF RECORD
 SUBMISSION DATE

PROJECT SPECIFIC STATE AGENCY APPROVAL

ORIGINAL PC STATE AGENCY APPROVAL

REVISIONS

1	
2	
3	
4	
5	
6	
7	
8	

SILVER CREEK INDUSTRIES

PROJECT NO: 10914
 DRAWN BY:
 SCALE: AS NOTED
 DATE: 04-20-17

SHEET NUMBER

A-0.2N

THESE DRAWINGS AND ALL MATERIAL CONTAINED HEREIN ARE THE PROPERTY OF SILVERCREEK INDUSTRIES, INC (SCI Inc) AND SHALL NOT BE REPRODUCED, COPIED OR OTHERWISE DISPOSED OF DIRECTLY OR INDIRECTLY AND SHALL NOT BE USED IN WHOLE OR IN PART TO ASSIST IN THE MAKING OF OR FOR THE PURPOSE OF FURNISHING ANY INFORMATION FOR THE MAKING OF DRAWINGS, PRINTS, APPARATUS OR PARTS THEREOF WITHOUT THE FULL KNOWLEDGE AND WRITTEN CONSENT OF SCI Inc. ALL PATENTABLE MATERIAL CONTAINED HEREIN AND ORIGINATING WITH SCI Inc SHALL BE THE PROPERTY OF SCI Inc

SILVER CREEK INDUSTRIES, INC.



2830 BARRETT AVE. PERRIS, CALIFORNIA 92571
PHONE: 951-943-5393 FAX: 951-943-2211

PROJECT NAME:

24x40 STOCKPILE OFFICE BUILDING

SHEET TITLE:

PROJECT SPECIFIC FLOOR PLAN

WALL LEGEND

- NOMINAL 4" WALL STUD
- NOMINAL 6" WALL STUD
- NOMINAL 8" WALL STUD
- WINDOW PER SCHEDULE SHEET A-0.2N
- DOOR PER SCHEDULE SHEET A-0.2N

SYMBOLS LEGEND

- 60" CIRCLE CLEAR SPACE
- 30"x48" CLEAR SPACE

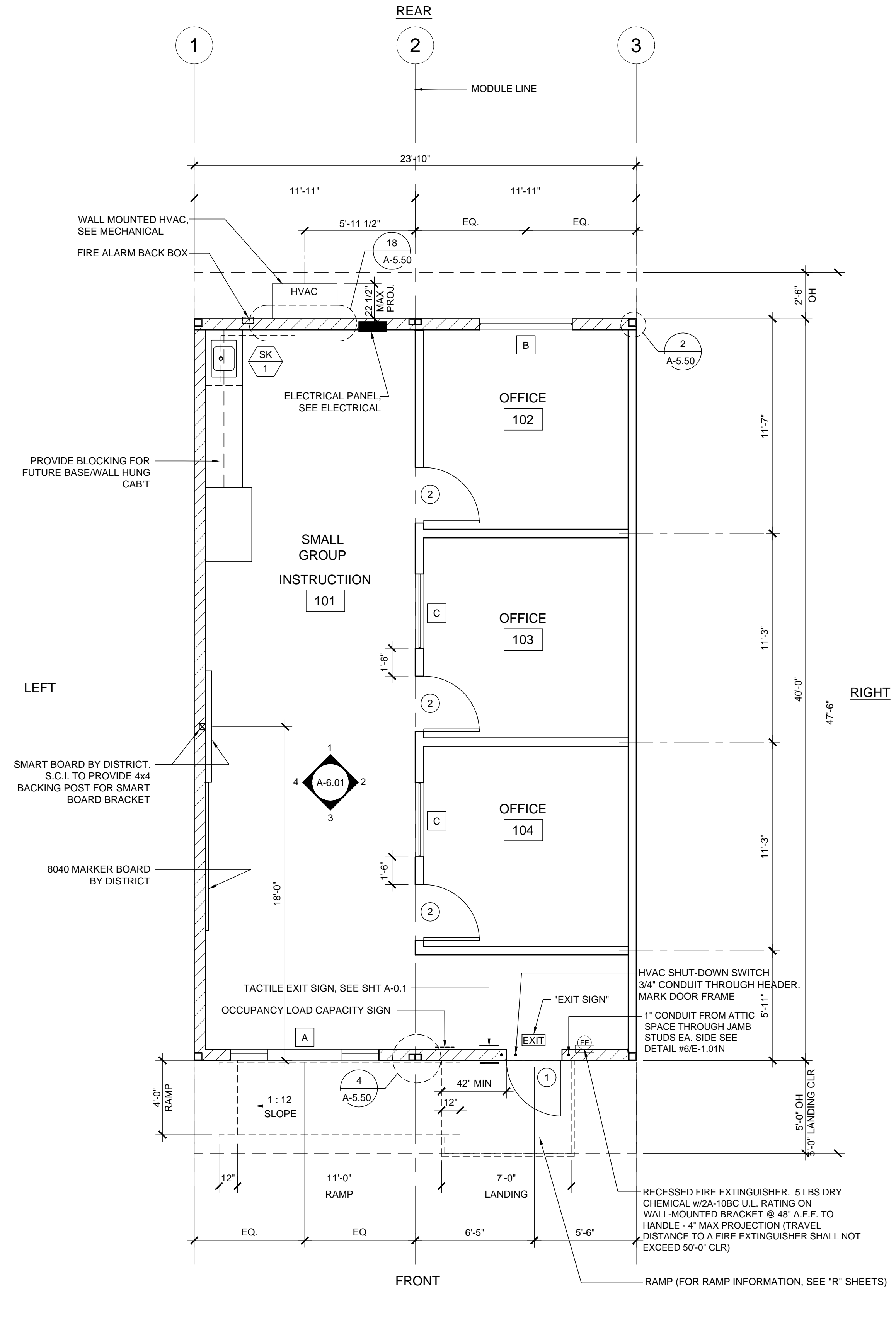
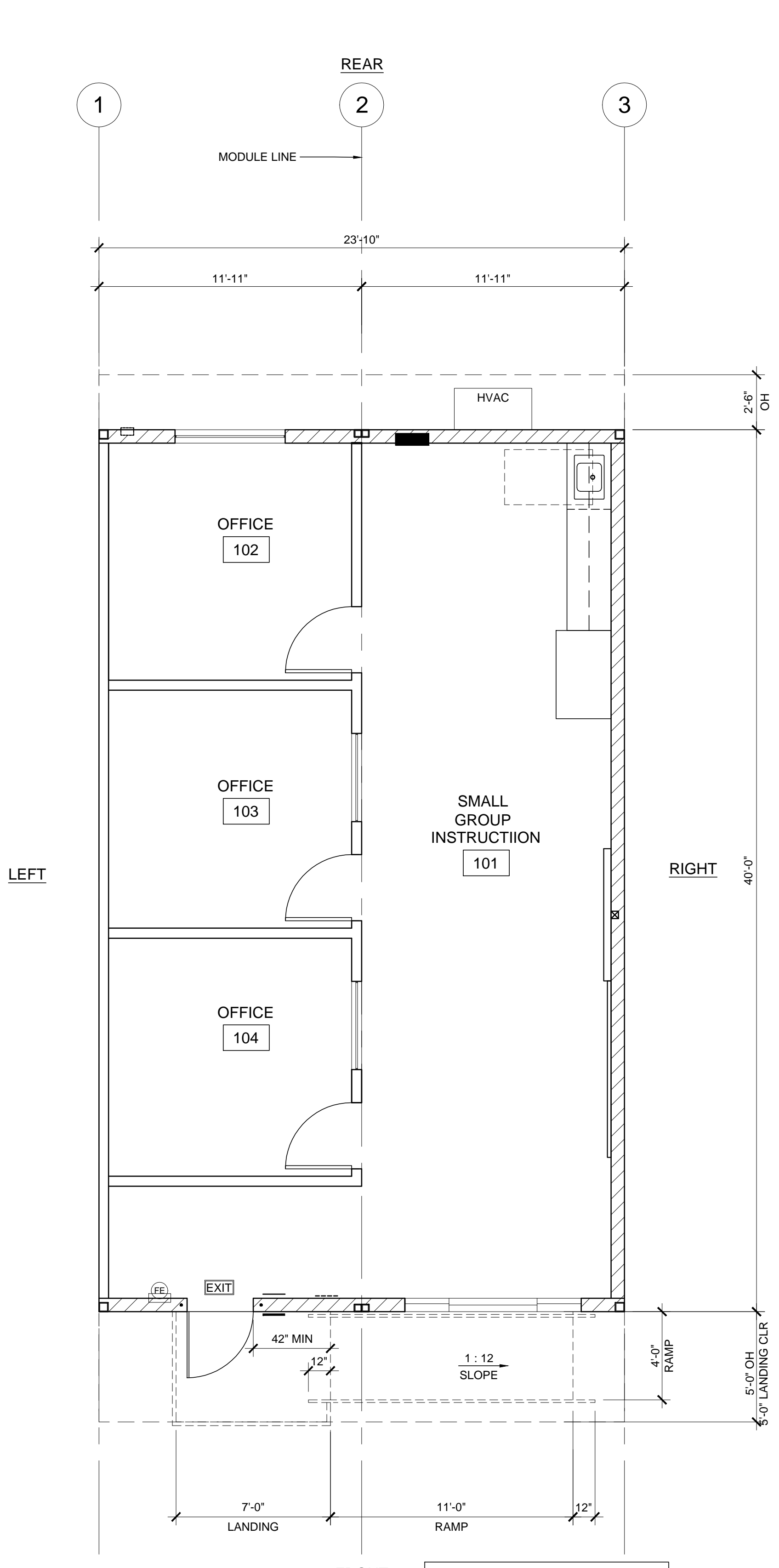
PLUMBING FIXTURE SCHEDULE

SYMBOL	FIXTURE	COLD WATER	HOT WATER	WASTE	VENT
	CLASSROOM SINK	1/2"	-	2"	2"

FIXTURE DESCRIPTION (AS CALLED OR APPROVED EQUAL)

ELKAY PSDKADQ2517C STAINLESS STEEL SINK W/ CENTER FAUCET HOLE. HAWS 5054LF DRINKING FOUNTAIN BUBBLER; HAWS 5510LF GOOSENECK FAUCET; AQUA PURE WATER FILTER AP717; PROVIDE COMPLETE ASSEMBLY FOR SINK INSTALLATION INCLUDING BRASSCRAFT ANGLE STOPS, BRASSCRAFT COPPER FAUCET RISER, BRASSCRAFT SPEEDI-PLUMB PLUS BRAIDED CONNECTOR, P-TRAP.

PLUMBING SCHEDULE



NOTE: SEE RIGHT HAND FLOOR PLAN FOR NOTES, DIMENSIONS AND CALLOUTS NOT SHOWN.

FLOOR PLAN

SCALE: 1/4" = 1'-0" 1

ARCHITECT OF RECORD SUBMISSION DATE

PROJECT SPECIFIC STATE AGENCY APPROVAL

ORIGINAL PC STATE AGENCY APPROVAL

REVISIONS

NO.	DESCRIPTION
1	
2	
3	
4	
5	
6	
7	
8	

SILVER CREEK INDUSTRIES

PROJECT NO: 10914

DRAWN BY:

SCALE: AS NOTED

DATE: 04-20-17

SHEET NUMBER

A-1.01N

THESE DRAWINGS AND ALL MATERIAL CONTAINED HEREIN ARE THE PROPERTY OF SILVERCREEK INDUSTRIES, INC (SCI Inc) AND SHALL NOT BE REPRODUCED, COPIED OR OTHERWISE DISPOSED OF DIRECTLY OR INDIRECTLY AND SHALL NOT BE USED IN WHOLE OR IN PART TO ASSIST IN THE MAKING OF OR FOR THE PURPOSE OF FURNISHING ANY INFORMATION FOR THE MAKING OF DRAWINGS, PRINTS, APPARATUS OR PARTS THEREOF WITHOUT THE FULL KNOWLEDGE AND WRITTEN CONSENT OF SCI Inc.
 ALL PATENTABLE MATERIAL CONTAINED HEREIN AND ORIGINATING WITH SCI Inc SHALL BE THE PROPERTY OF SCI Inc

SILVER CREEK INDUSTRIES, INC.



2830 BARRETT AVE. PERRIS, CALIFORNIA 92571
 PHONE: 951-943-5393 FAX: 951-943-2211

PROJECT NAME:

24x40 STOCKPILE OFFICE BUILDING

SHEET TITLE:

PROJECT SPECIFIC REFLECTED CEILING

ARCHITECT OF RECORD
 SUBMISSION DATE

PROJECT SPECIFIC STATE AGENCY APPROVAL

ORIGINAL PC STATE AGENCY APPROVAL

REVISIONS

1	
2	
3	
4	
5	
6	
7	
8	

SILVER CREEK INDUSTRIES

PROJECT NO. 10914

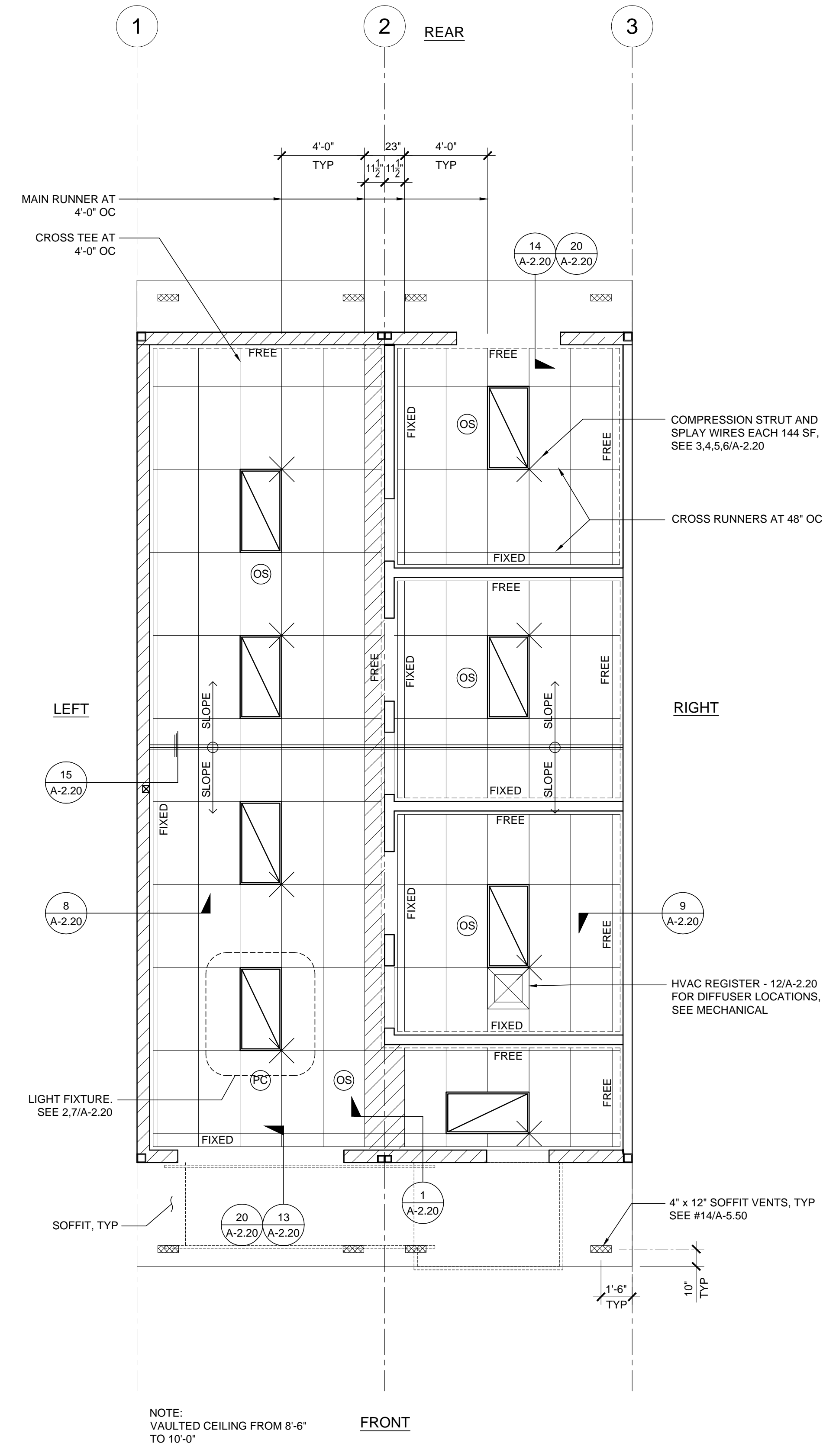
DRAWN BY:

SCALE: AS NOTED

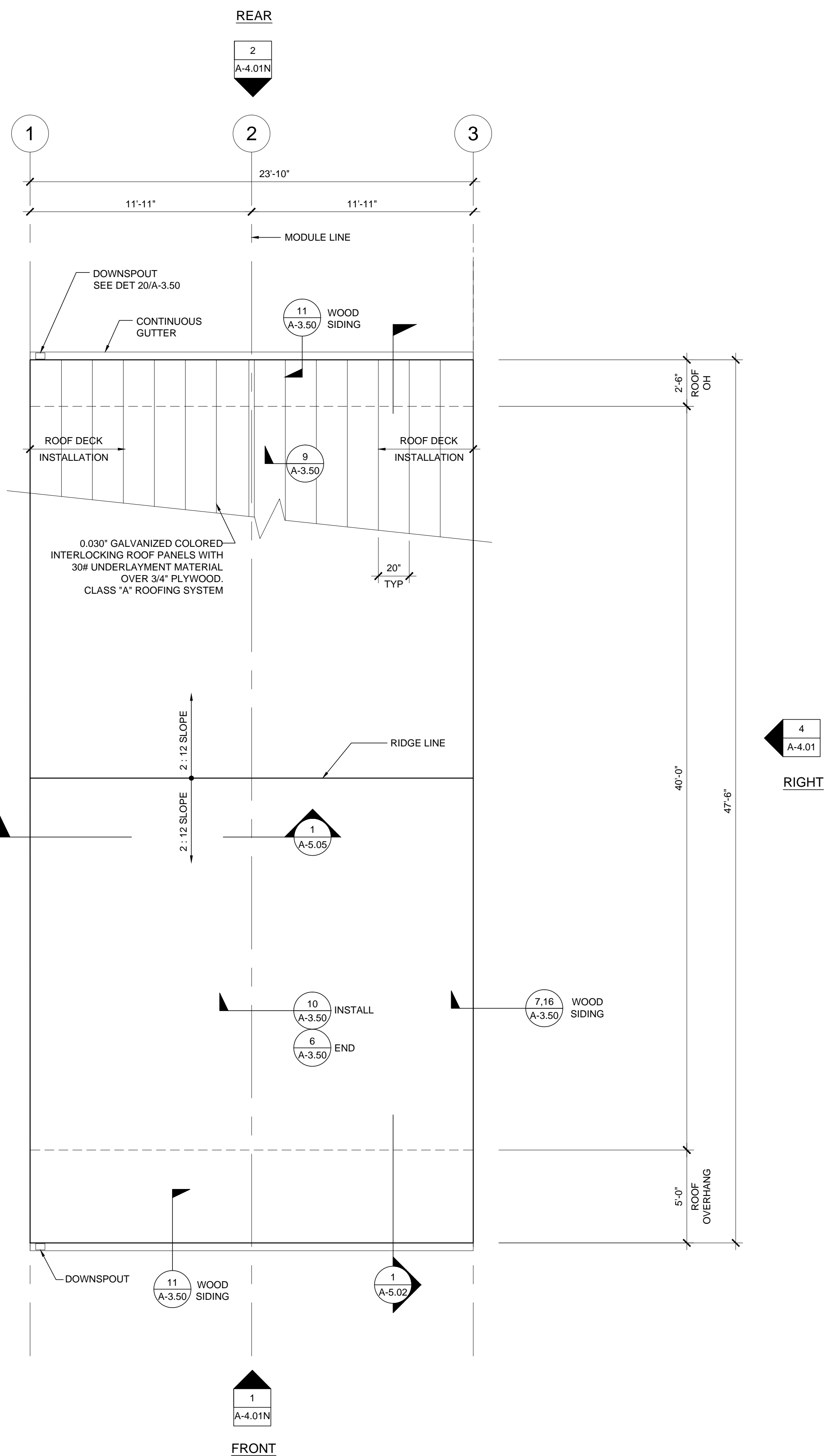
DATE: 04-20-17

SHEET NUMBER

A-2.11N



NOTE:
 VAULTED CEILING FROM 8'-6"
 TO 10'-0"



NOTES

- BUILDINGS SHALL HAVE ROOF COVERINGS AS SPECIFIED IN CBC TABLE 1505.1 - CLASS A.
- LOCATIONS OF DRAFTSTOP AND/OR FULL HEIGHT PARTITIONS AS REQUIRED PER CBC-718.4.3 SHALL BE SHOWN ON PROJECT SPECIFIC PLANS LOCATED AT MODULE LINES.
- ALL ROOFTOP EQUIPMENT THAT REQUIRES SERVICE & ROOF ACCESS HATCHES MUST BE A MIN. OF 10'-0" AWAY FROM ALL ROOF EDGES TO OPENING EDGES. CBC 2016 SECTIONS 1015.6 & 1015.7.
- FOR SPECIFIC DOWNSPOUT LOCATIONS FOR VARIOUS BUILDING SIZES, SEE KEY PLANS ON SHEET A-0.3. LOCATE ONE (1) DOWNSPOUT FOR EVERY THREE (3) MODULES (TYP)
- ANY BUILDING OVER 3,000 SQ/FT REQUIRES A DRAFT STOP UNLESS BUILDING IS EQUIPPED WITH FIRE SPRINKLERS.
- WHEN PARAPETS ARE REQUIRED BECAUSE OF FIRE SEPARATION REQUIREMENTS AND/OR PROJECT SPECIFICATIONS, PROVIDE PARAPET PER CBC SECT. 705.11.

THESE DRAWINGS AND ALL MATERIAL CONTAINED HEREIN ARE THE PROPERTY OF SILVERCREEK INDUSTRIES, INC (SCI Inc) AND SHALL NOT BE REPRODUCED, COPIED OR OTHERWISE DISPOSED OF DIRECTLY OR INDIRECTLY AND SHALL NOT BE USED IN WHOLE OR IN PART TO ASSIST IN THE MAKING OF OR FOR THE PURPOSE OF FURNISHING ANY INFORMATION FOR THE MAKING OF DRAWINGS, PRINTS, APPARATUS OR PARTS THEREOF WITHOUT THE FULL KNOWLEDGE AND WRITTEN CONSENT OF SCI Inc. ALL PATENTABLE MATERIAL CONTAINED HEREIN AND ORIGINATING WITH SCI Inc SHALL BE THE PROPERTY OF SCI Inc

SILVER CREEK INDUSTRIES, INC.



2830 BARRETT AVE. PERRIS, CALIFORNIA 92571
PHONE: 951-943-5393 FAX: 951-943-2211

PROJECT NAME:

24x40 STOCKPILE OFFICE BUILDING

SHEET TITLE:
PROJECT SPECIFIC ROOF PLAN
24'x40' - 0.030" METAL DECK

ARCHITECT OF RECORD
SUBMISSION DATE

PROJECT SPECIFIC STATE AGENCY APPROVAL

ORIGINAL PC STATE AGENCY APPROVAL

REVISIONS

1	
2	
3	
4	
5	
6	
7	
8	

SILVER CREEK INDUSTRIES

PROJECT NO: 10914

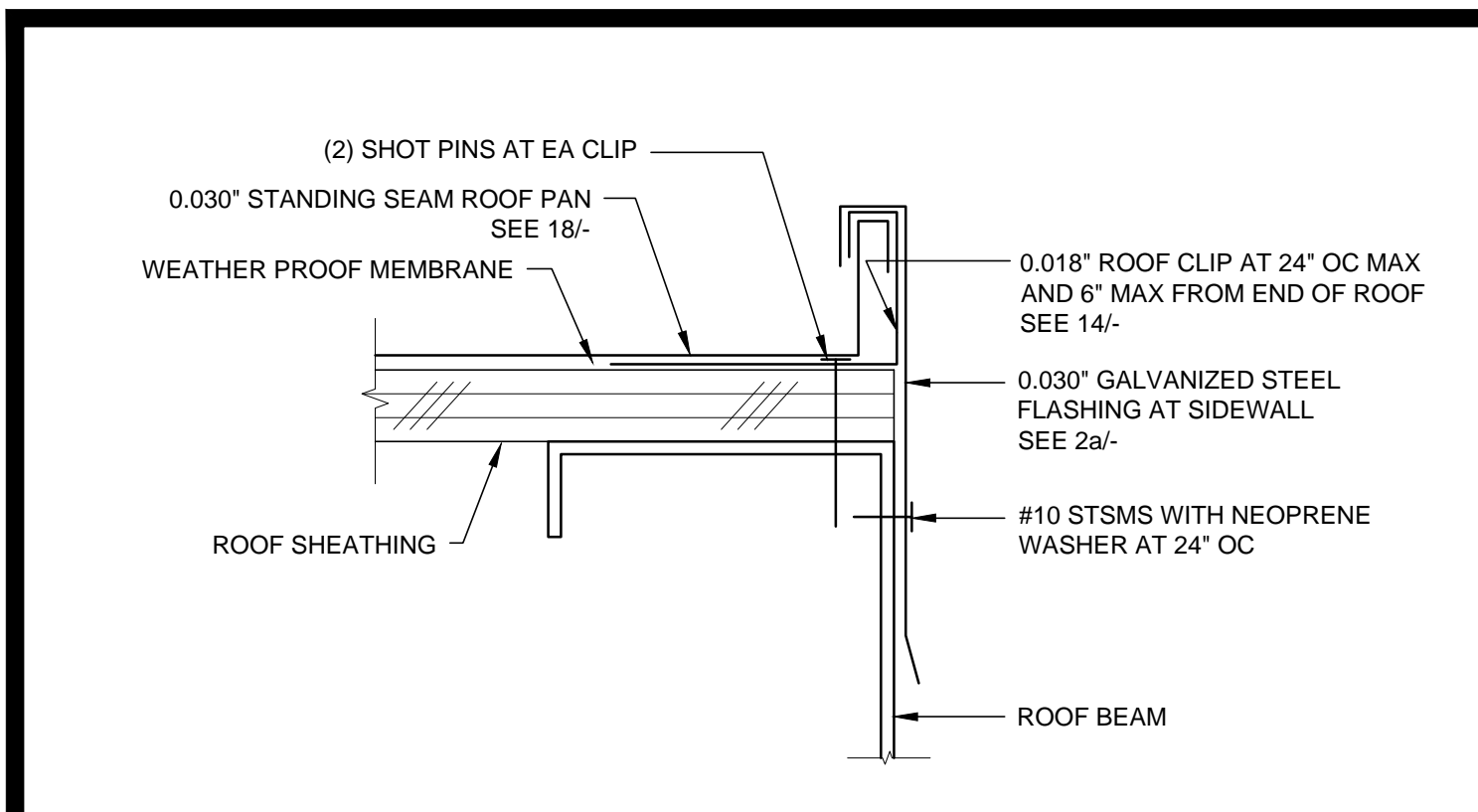
DRAWN BY:

SCALE: AS NOTED

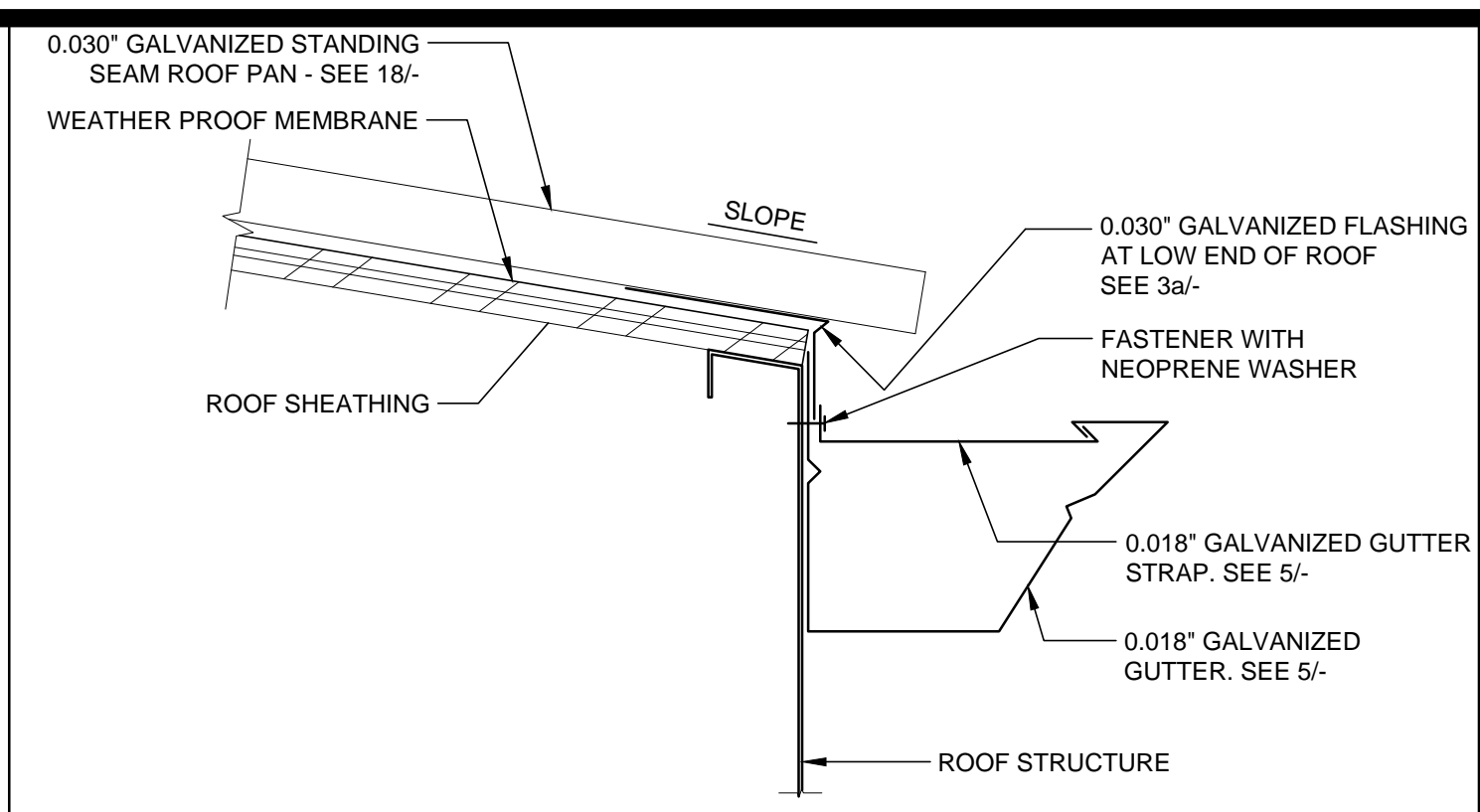
DATE: 04-20-17

SHEET NUMBER

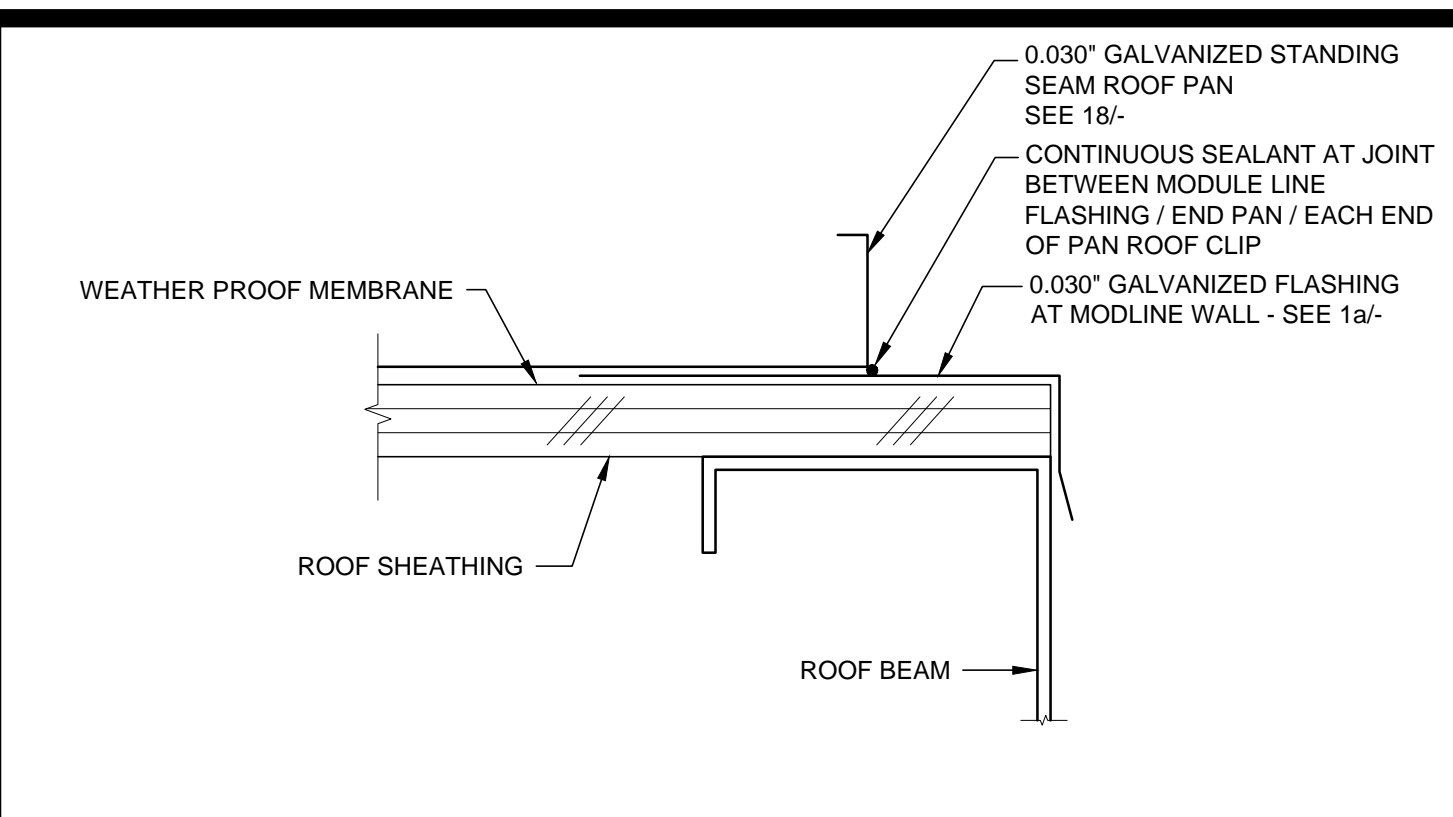
A-3.01N



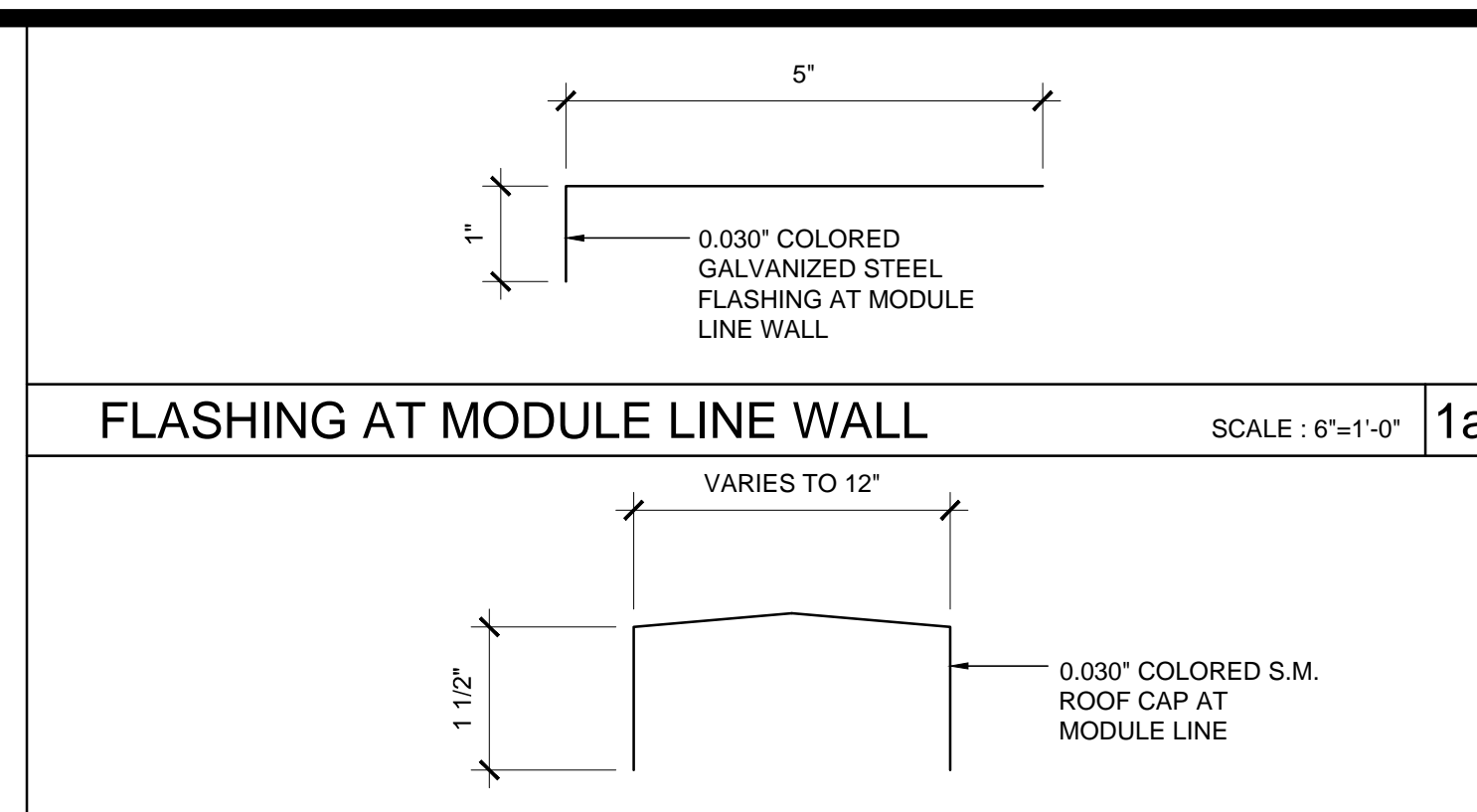
ROOF FLASHING AT SIDEWALL SCALE : 6"=1'-0" 16



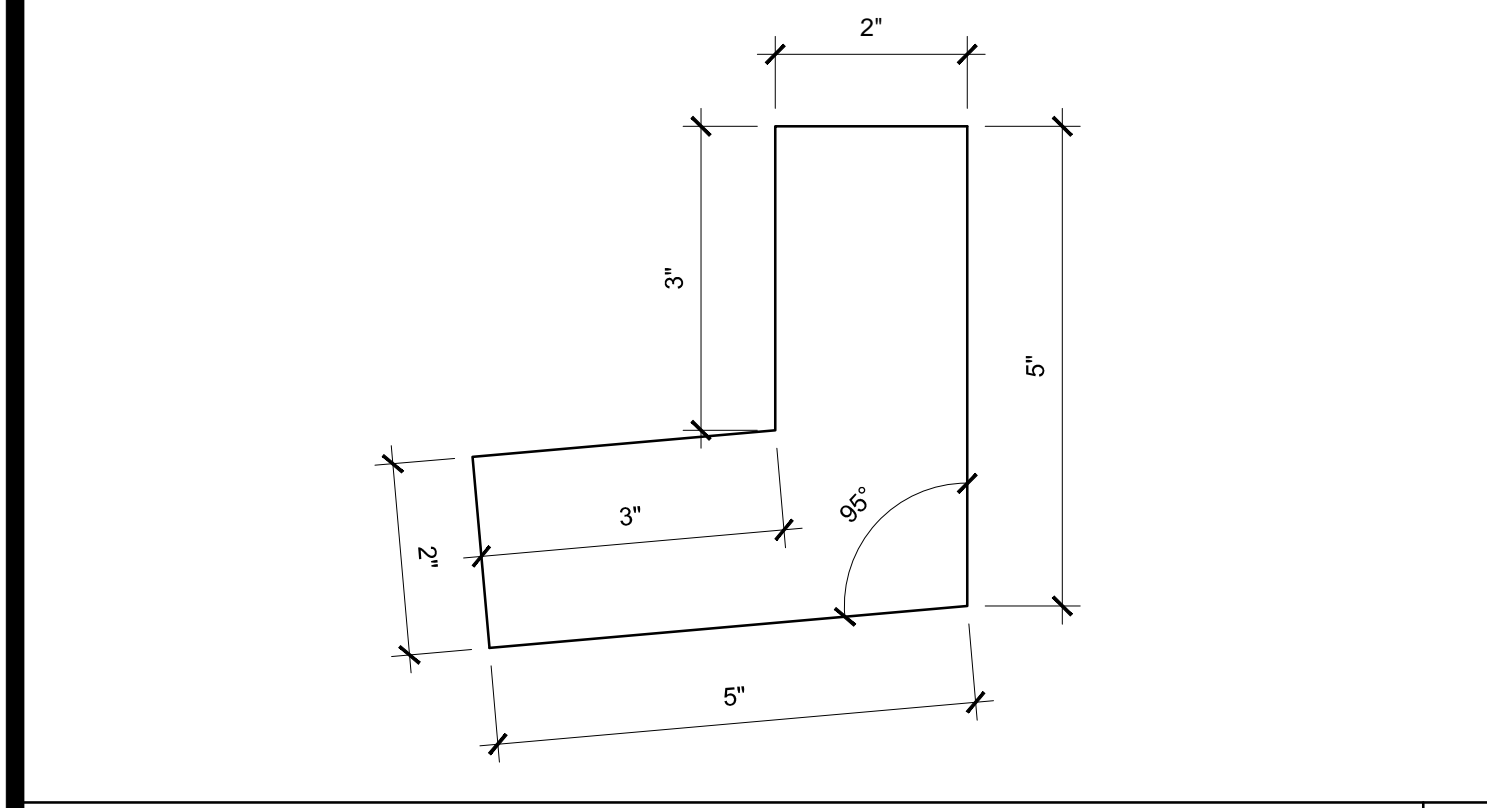
GUTTER AT ROOF FASCIA BEAM SCALE : 3"=1'-0" 11



END ROOF PAN CONNECTION SCALE : 6"=1'-0" 6



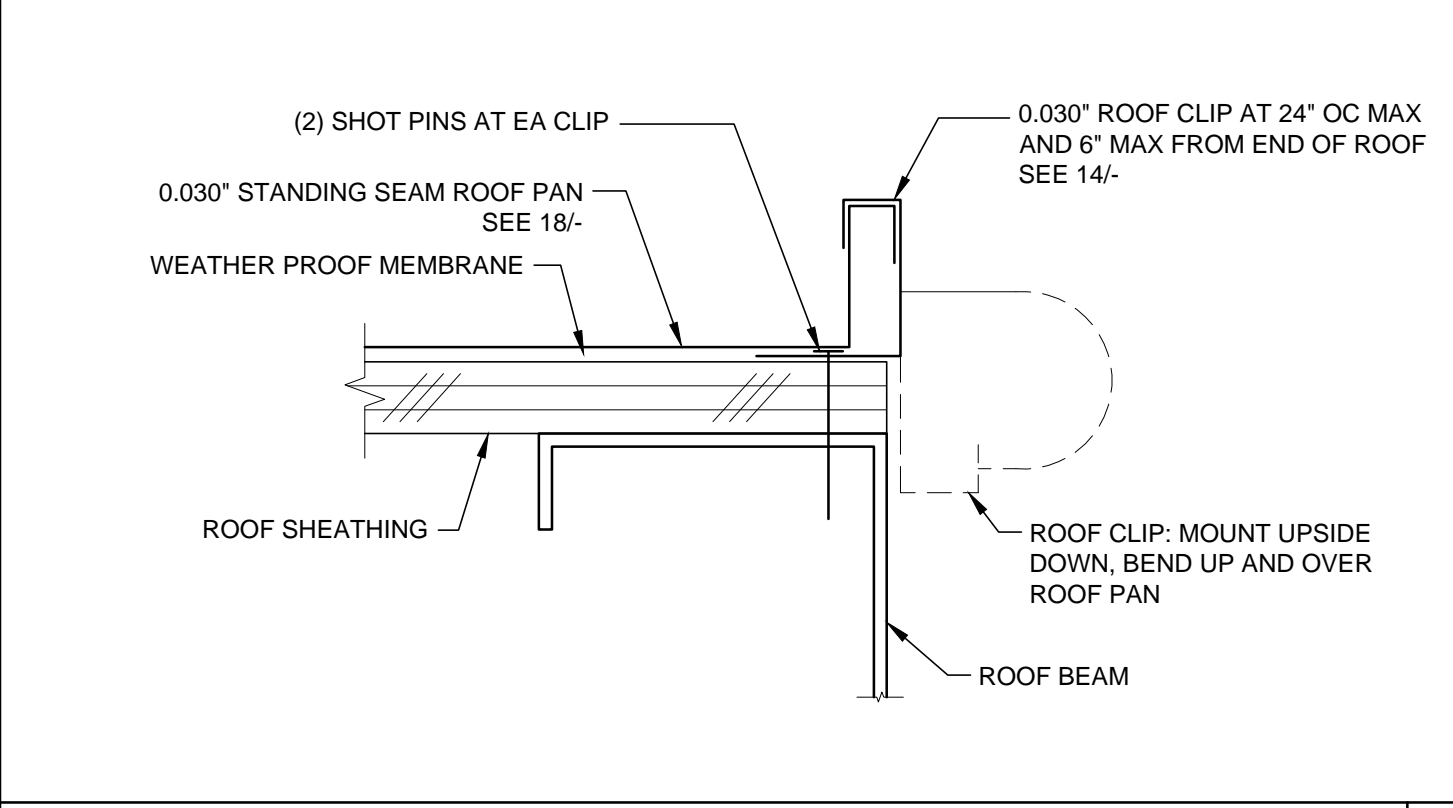
0.018" ROOF CAP AT MODULE LINE SCALE : 6"=1'-0" 1b



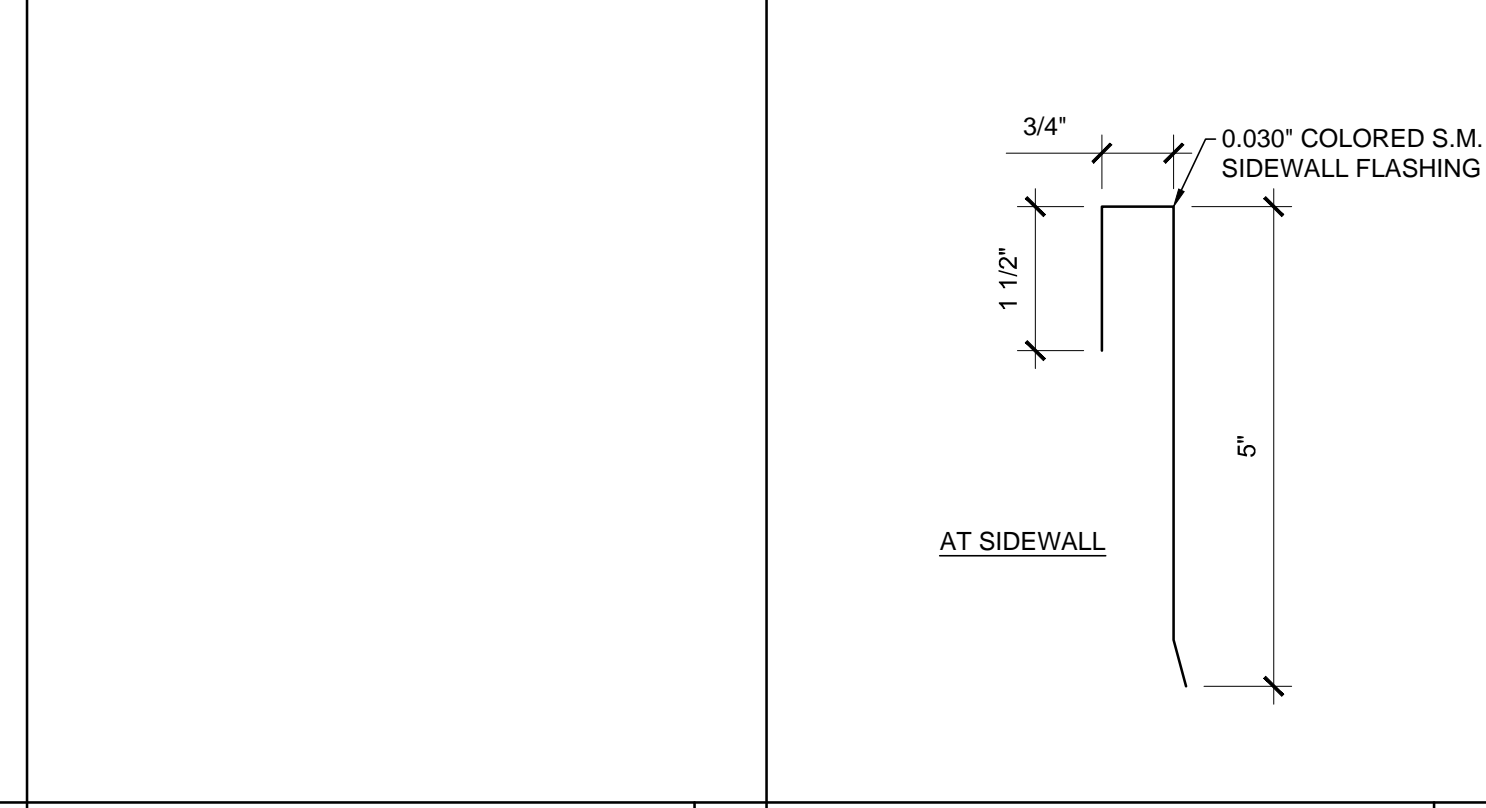
DOWNSPOUT ATTACHMENT SCALE : 6"=1'-0" 17



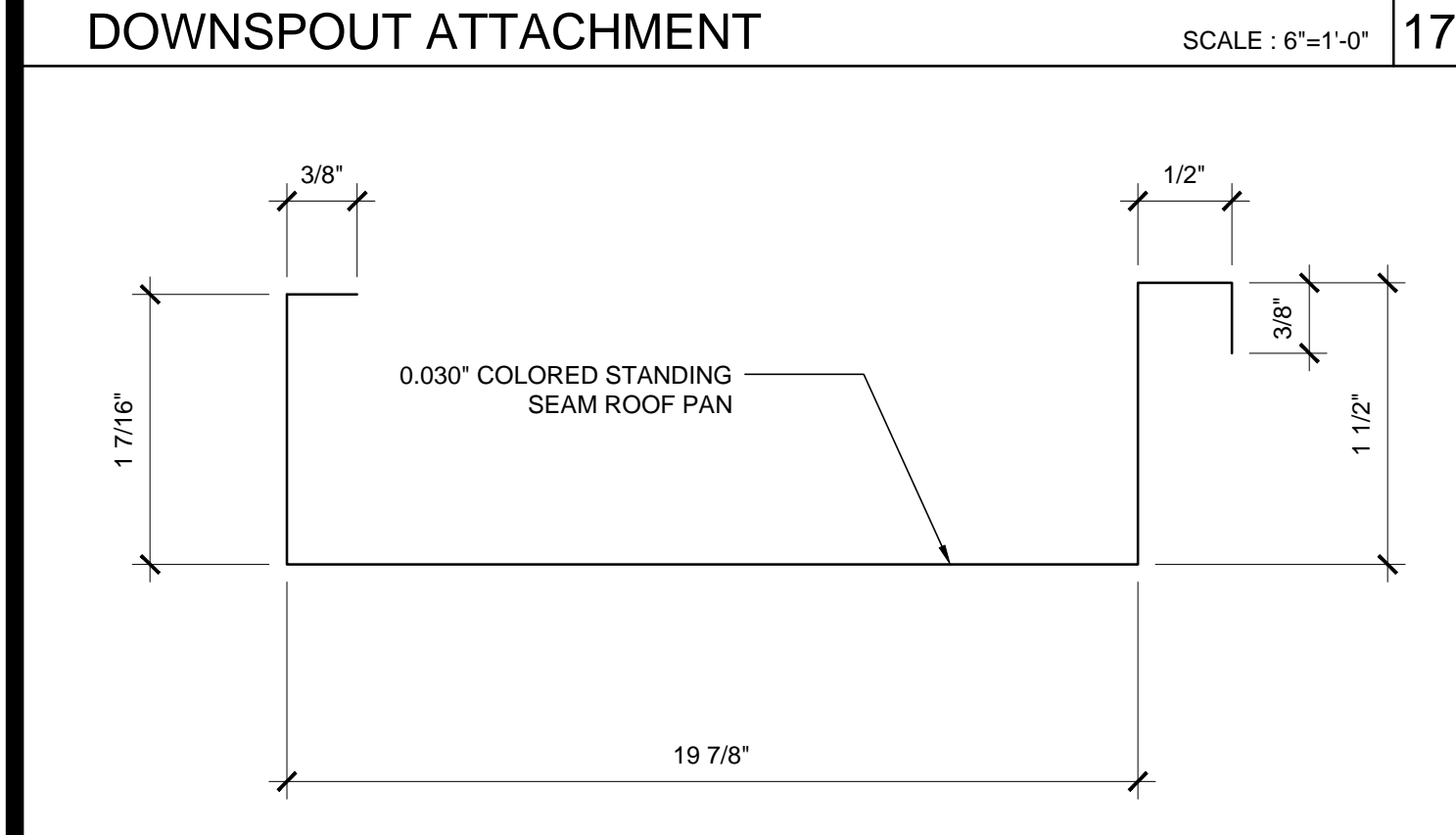
STARTER ROOF PAN CONNECTION SCALE : 6"=1'-0" 7



NOT USED 2b ROOF FLASHING SCALE : 6"=1'-0" 2a



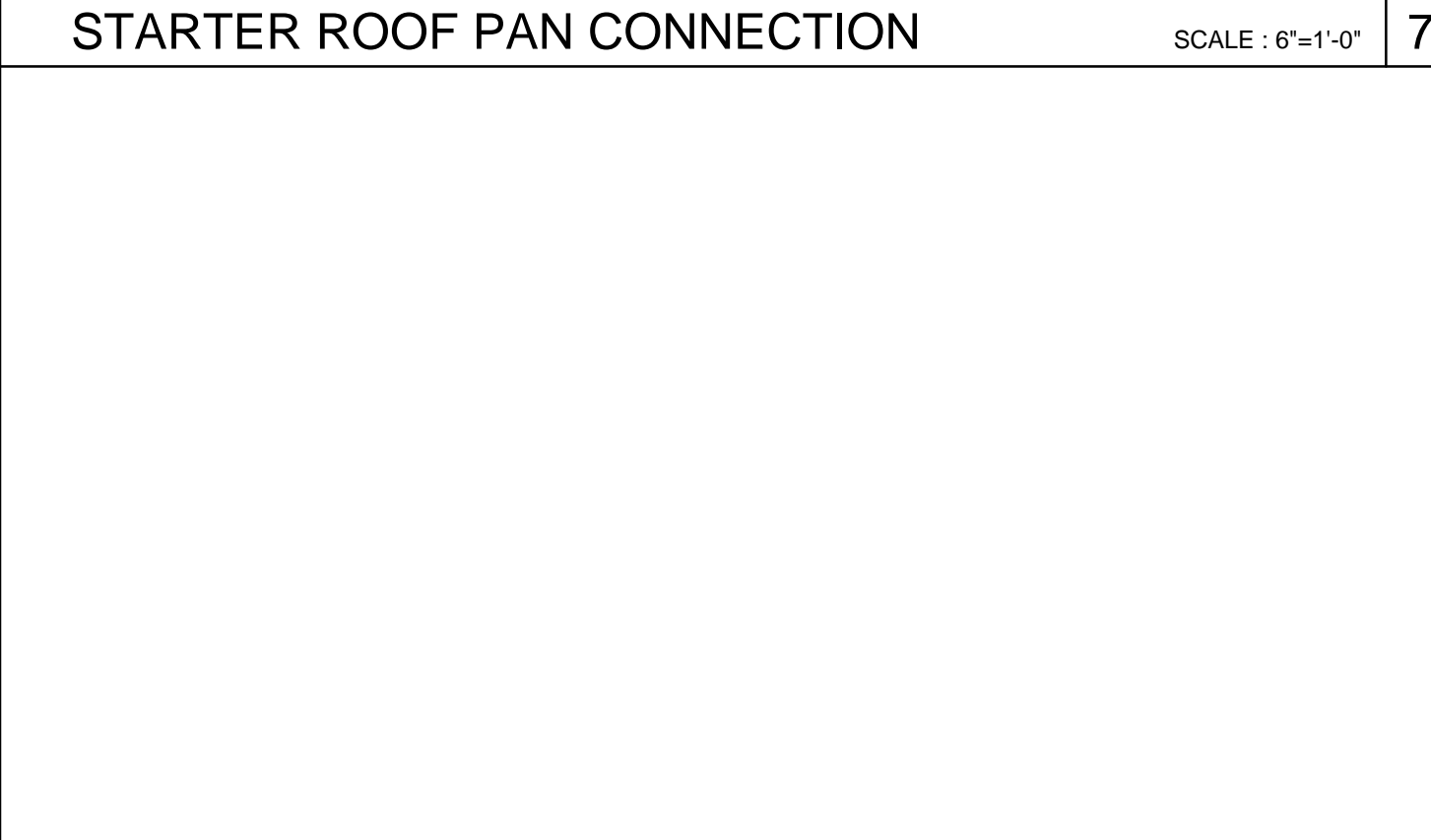
NOT USED 8 ROOF FLASHING SCALE : 6"=1'-0" 2a



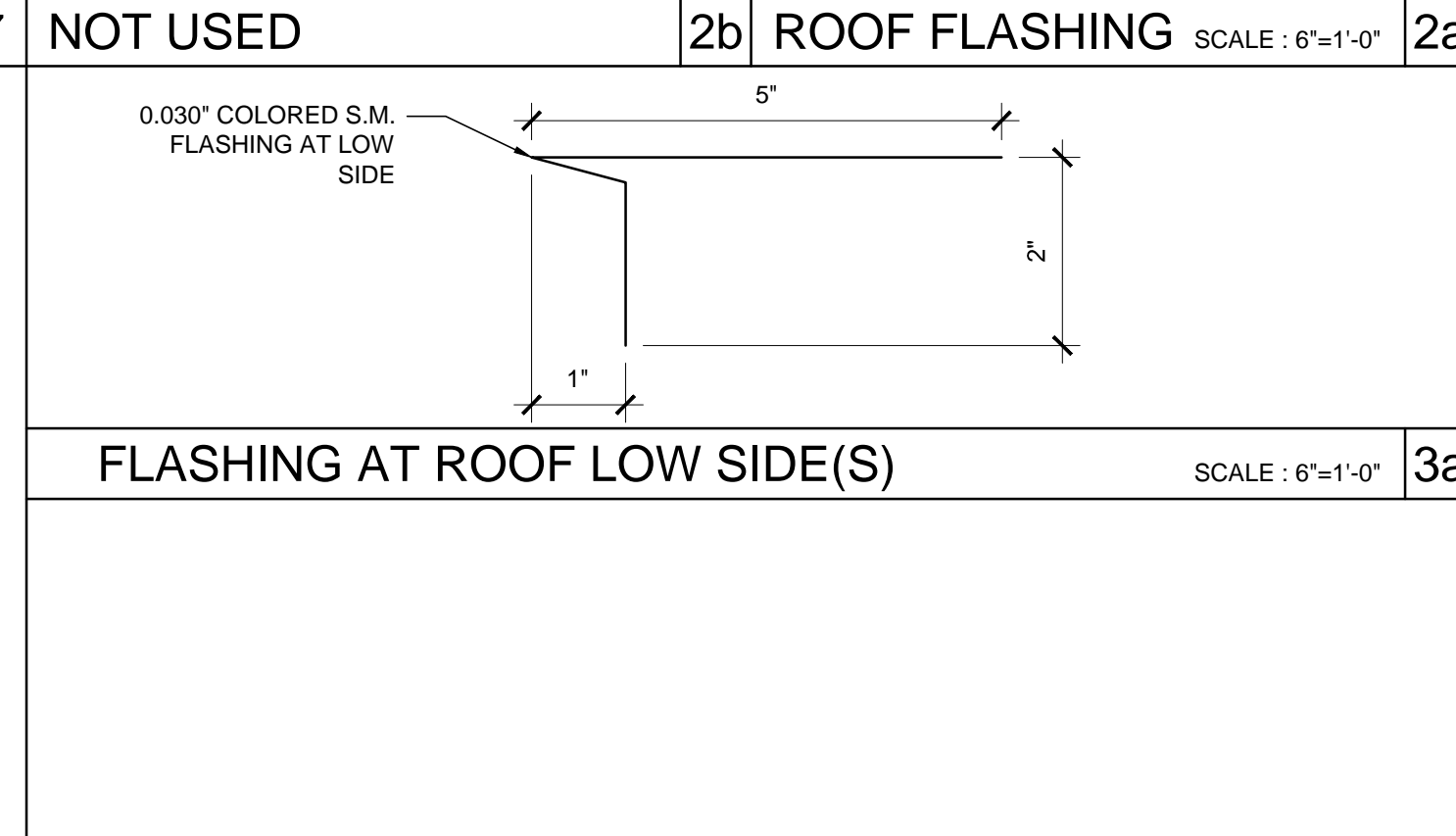
ROOF DECK PROFILE SCALE : 6"=1'-0" 18



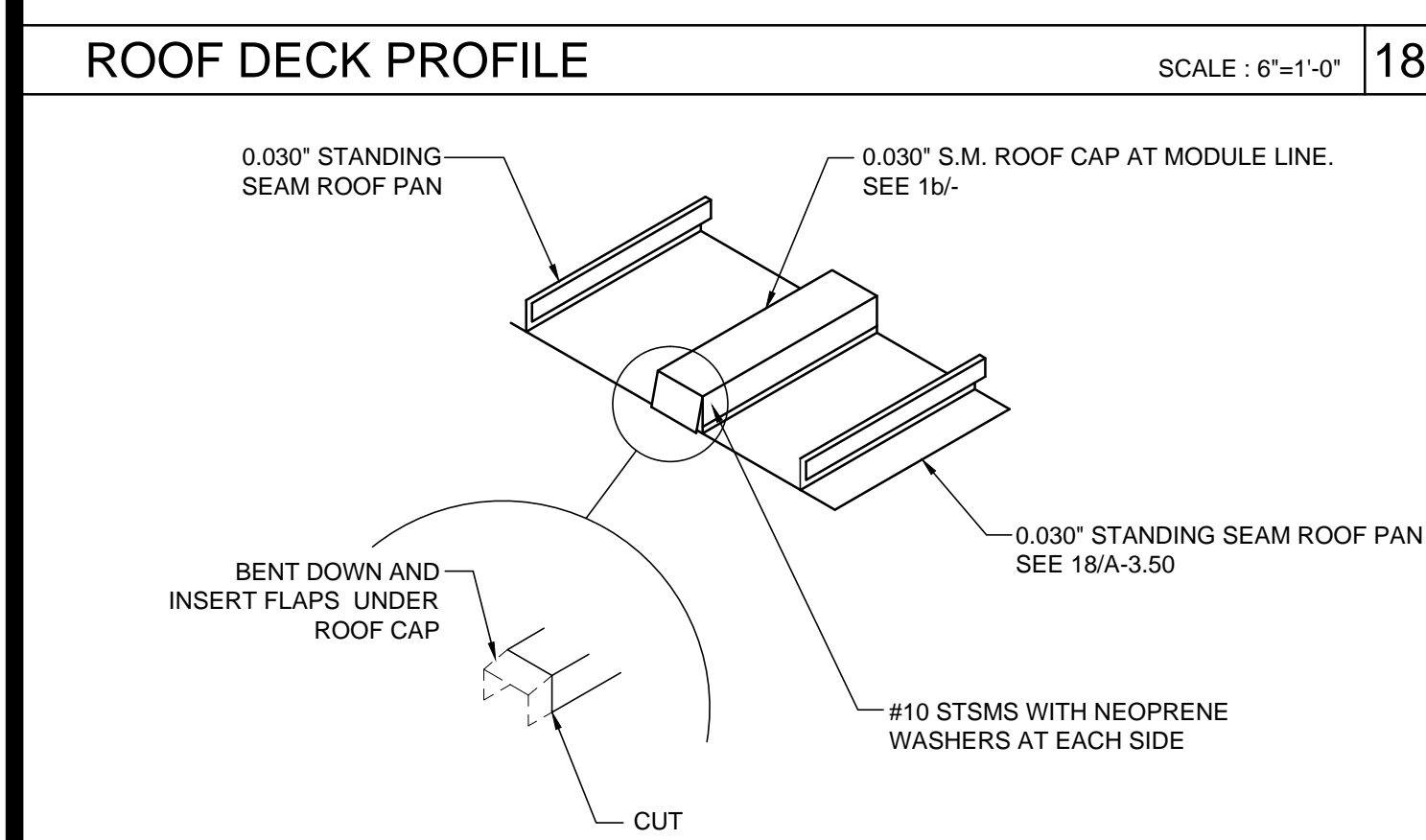
ROOF CLIP SCALE : 1'-0"=1'-0" 14



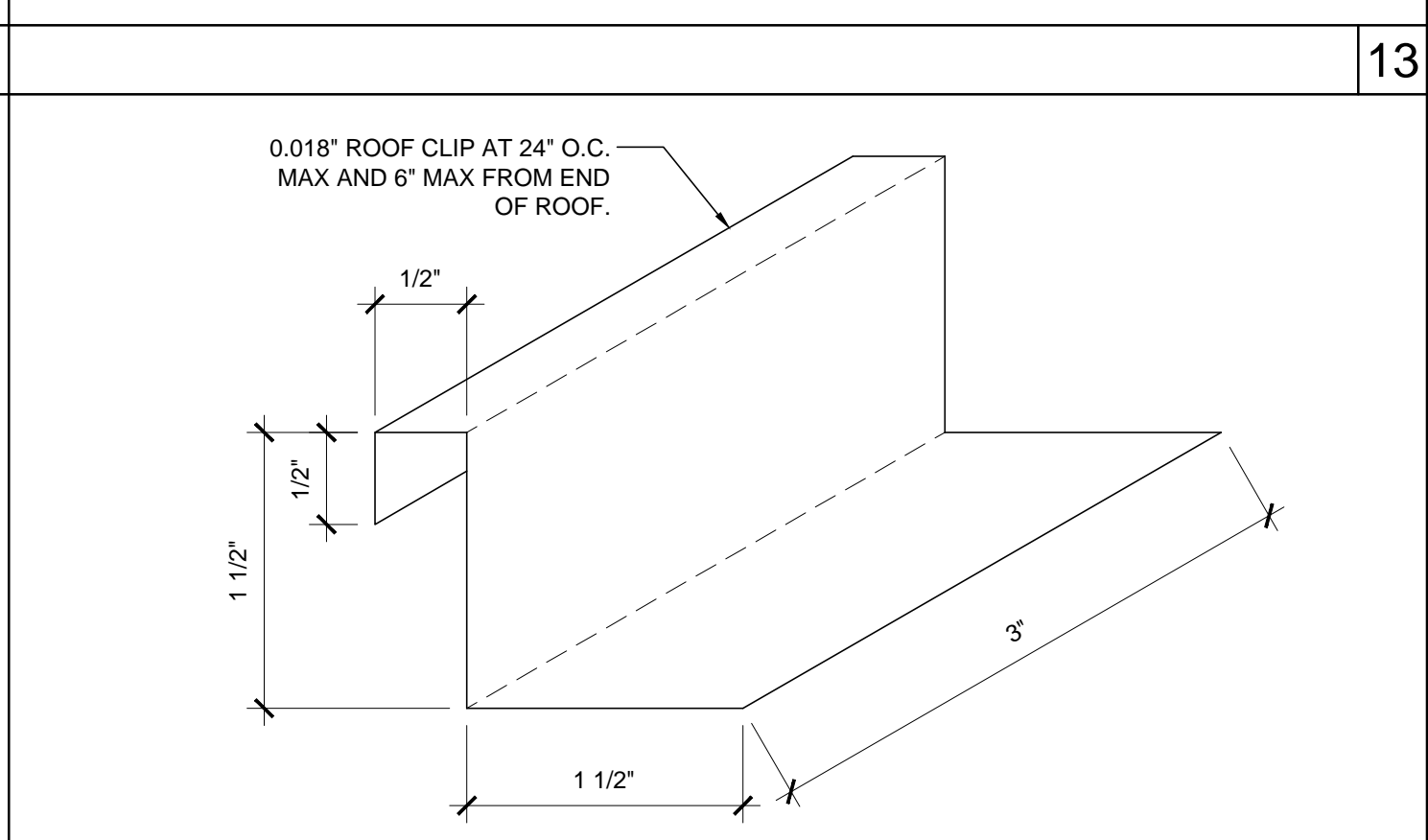
ROOF STANDING SEAM SCALE : NTS 9



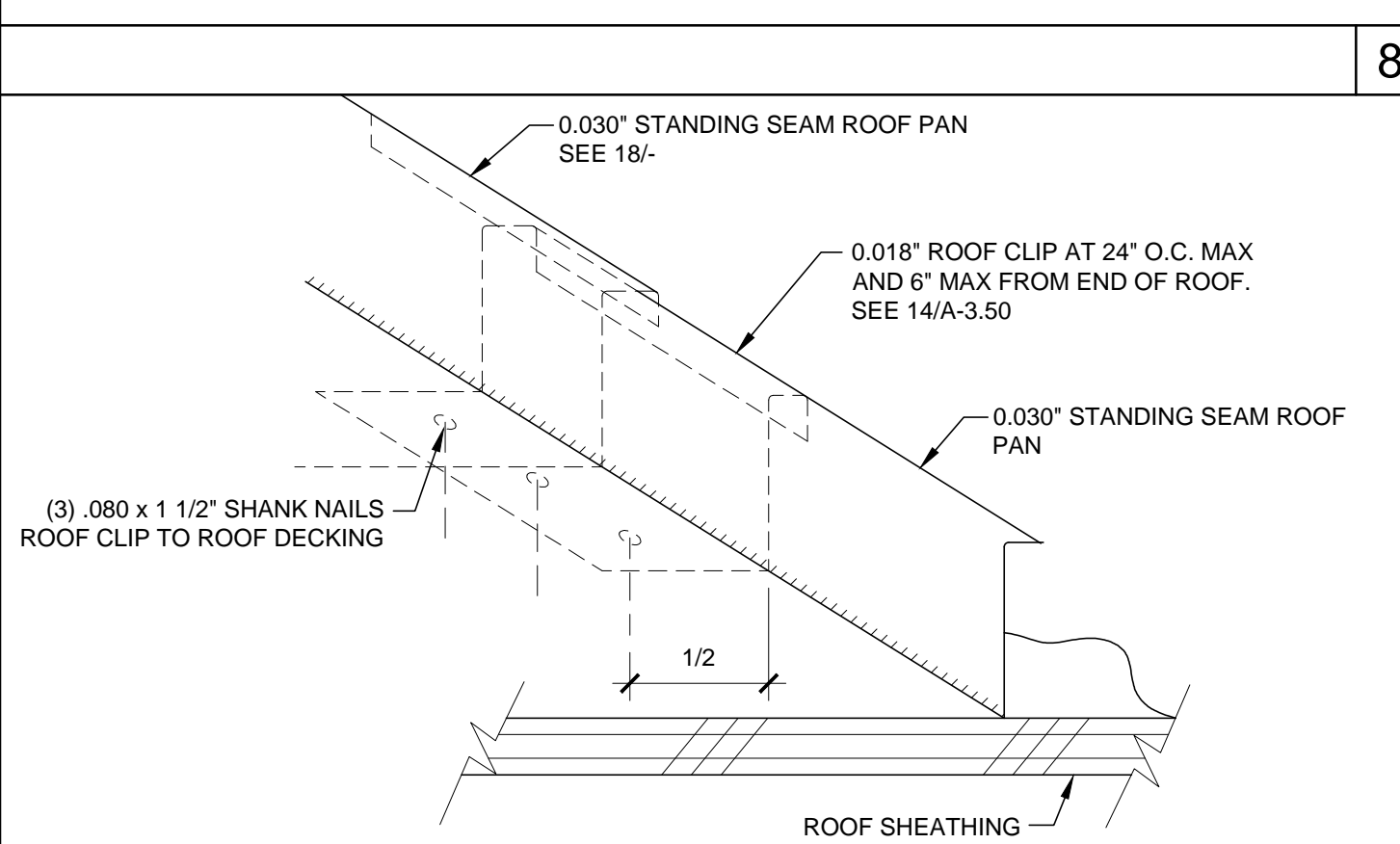
NOT USED 8



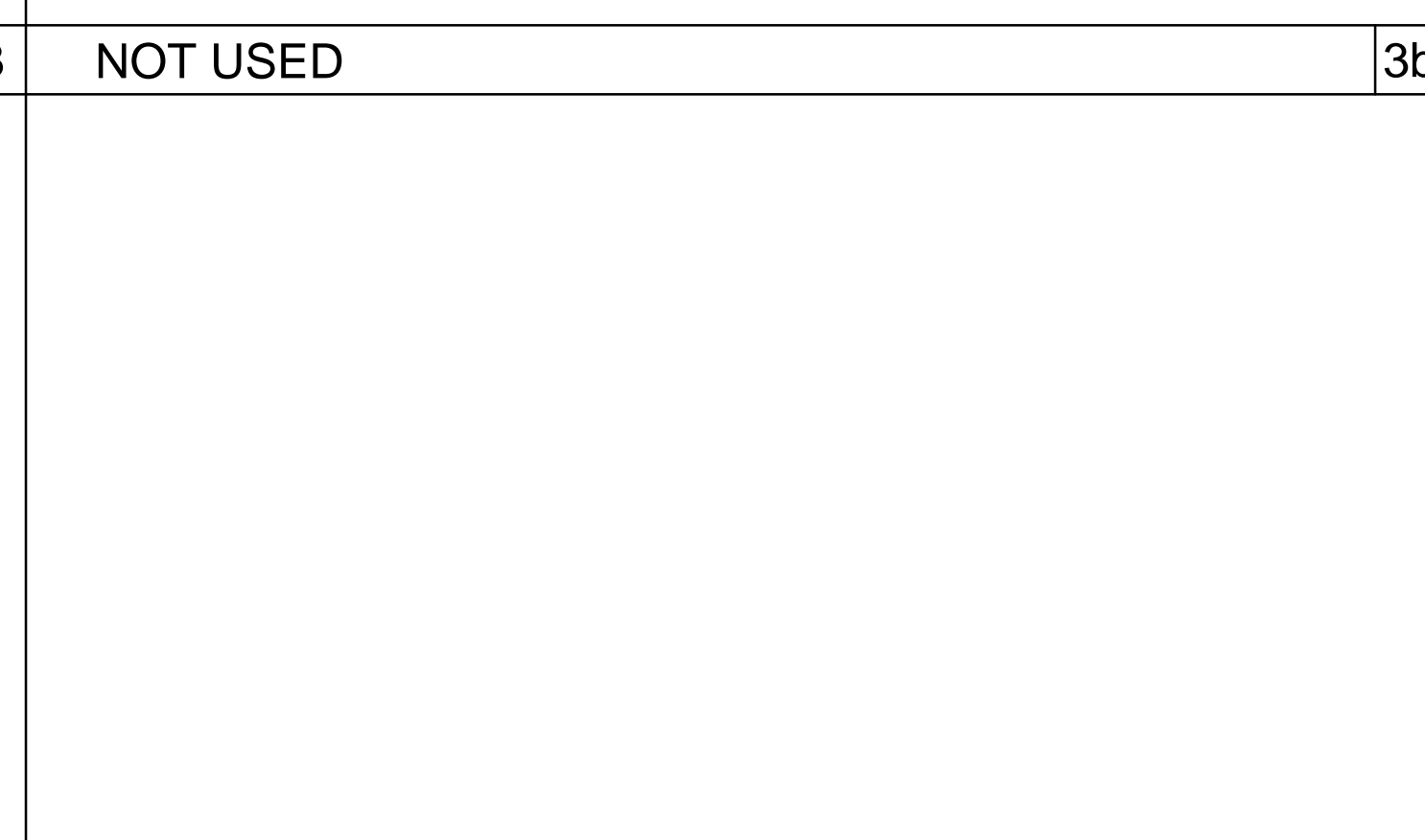
MODULE LINE ROOF CAP SCALE : NTS 19



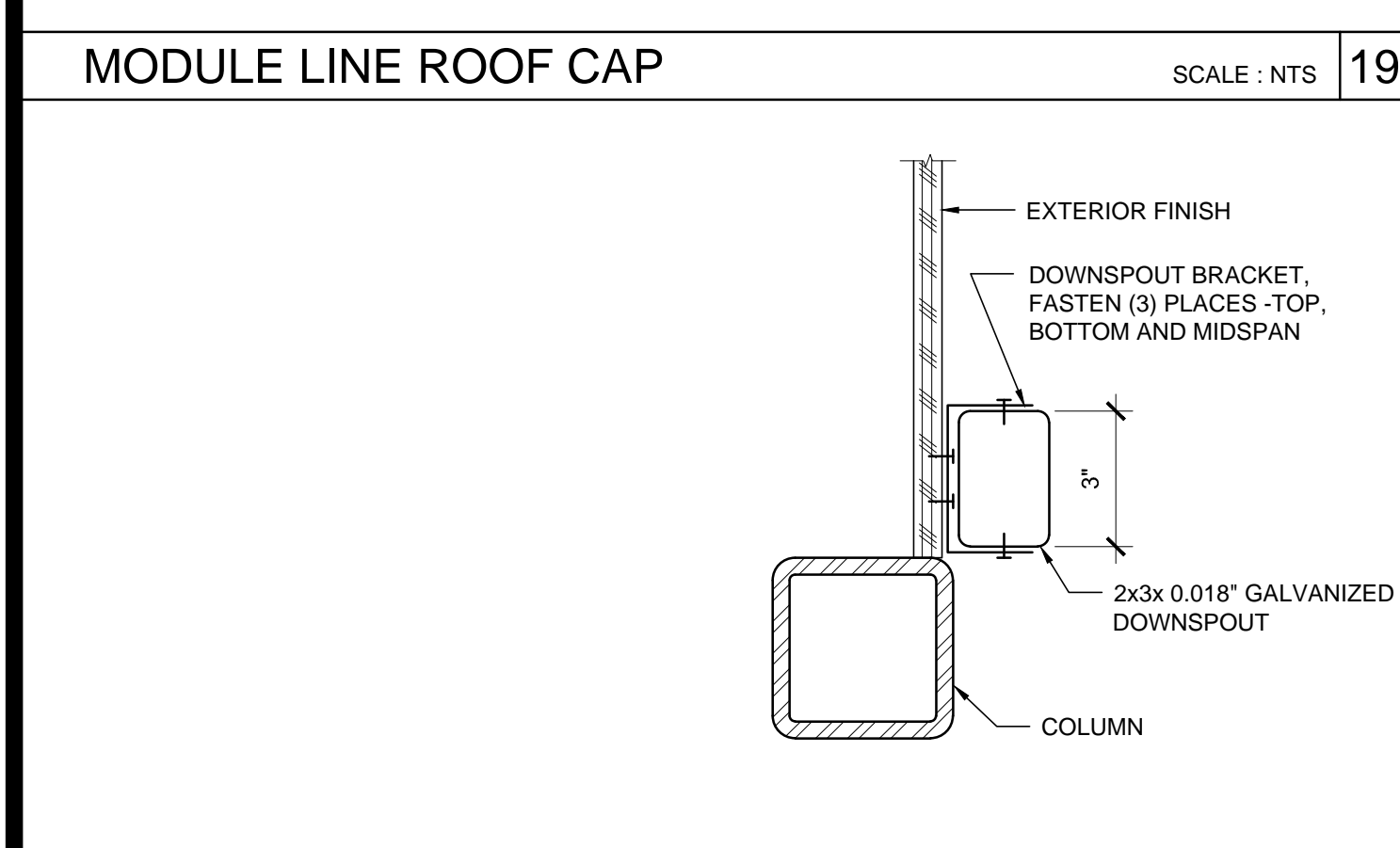
ROOF CLIP SCALE : 1'-0"=1'-0" 14



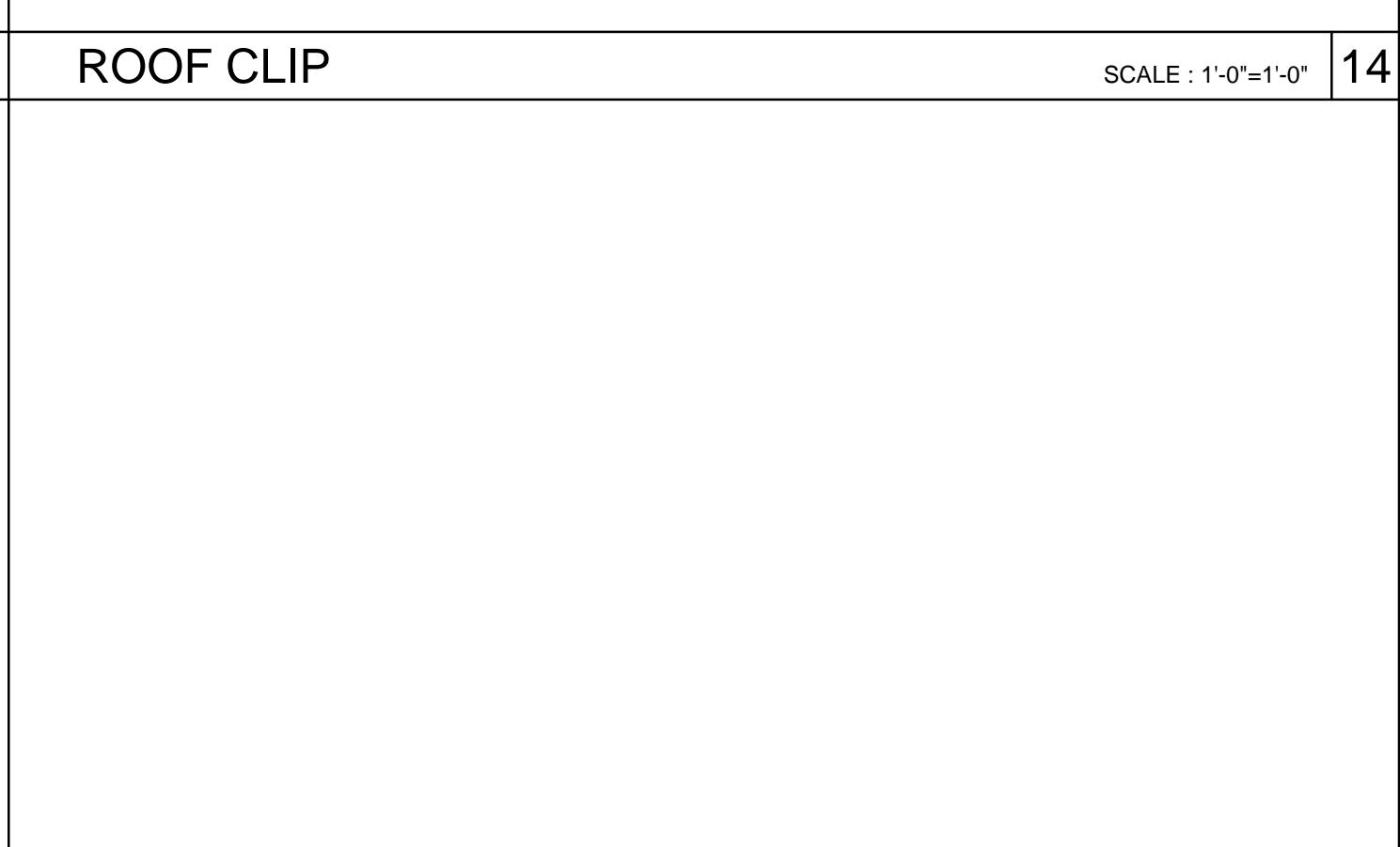
ROOF STANDING SEAM SCALE : NTS 9



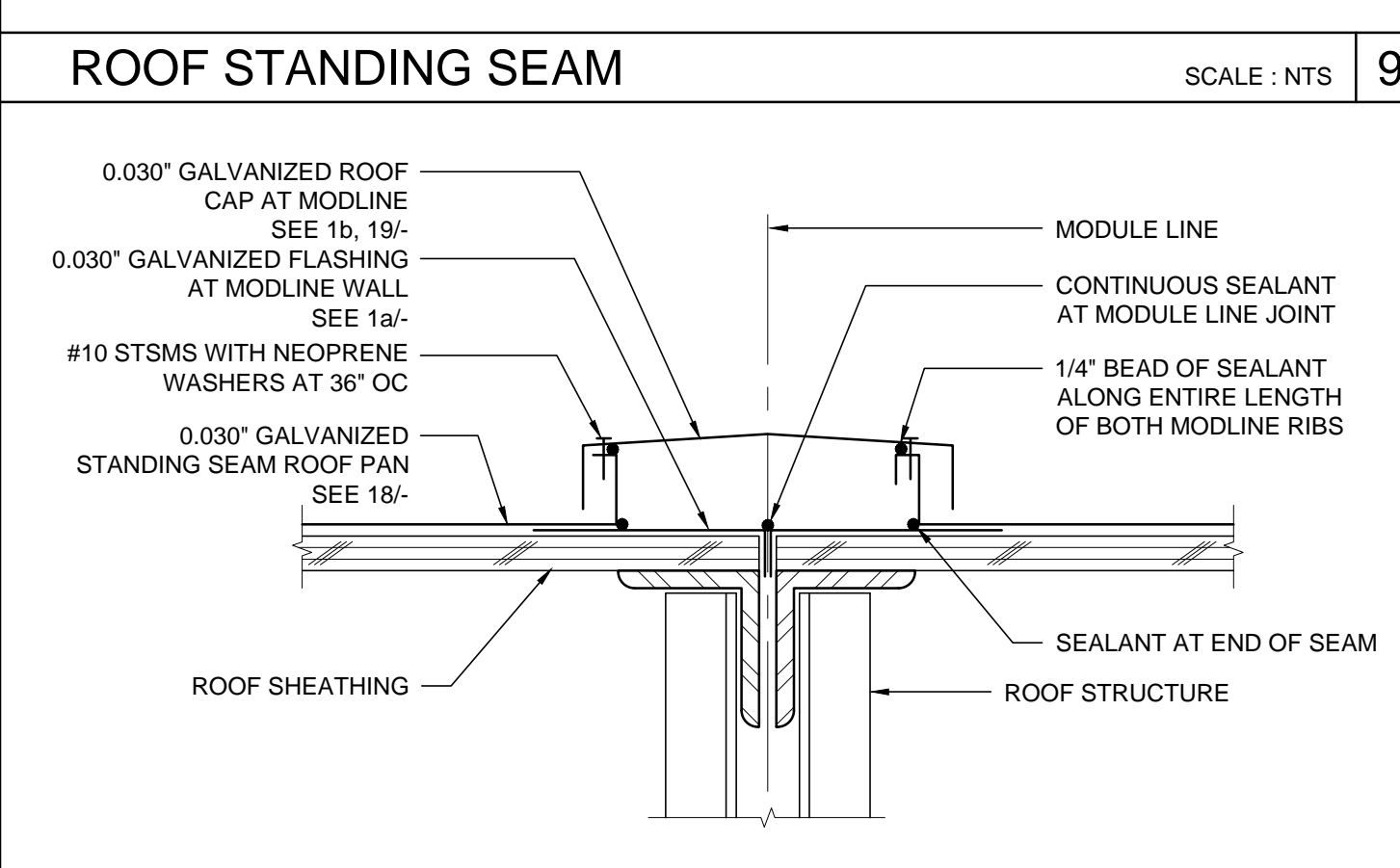
NOT USED 8



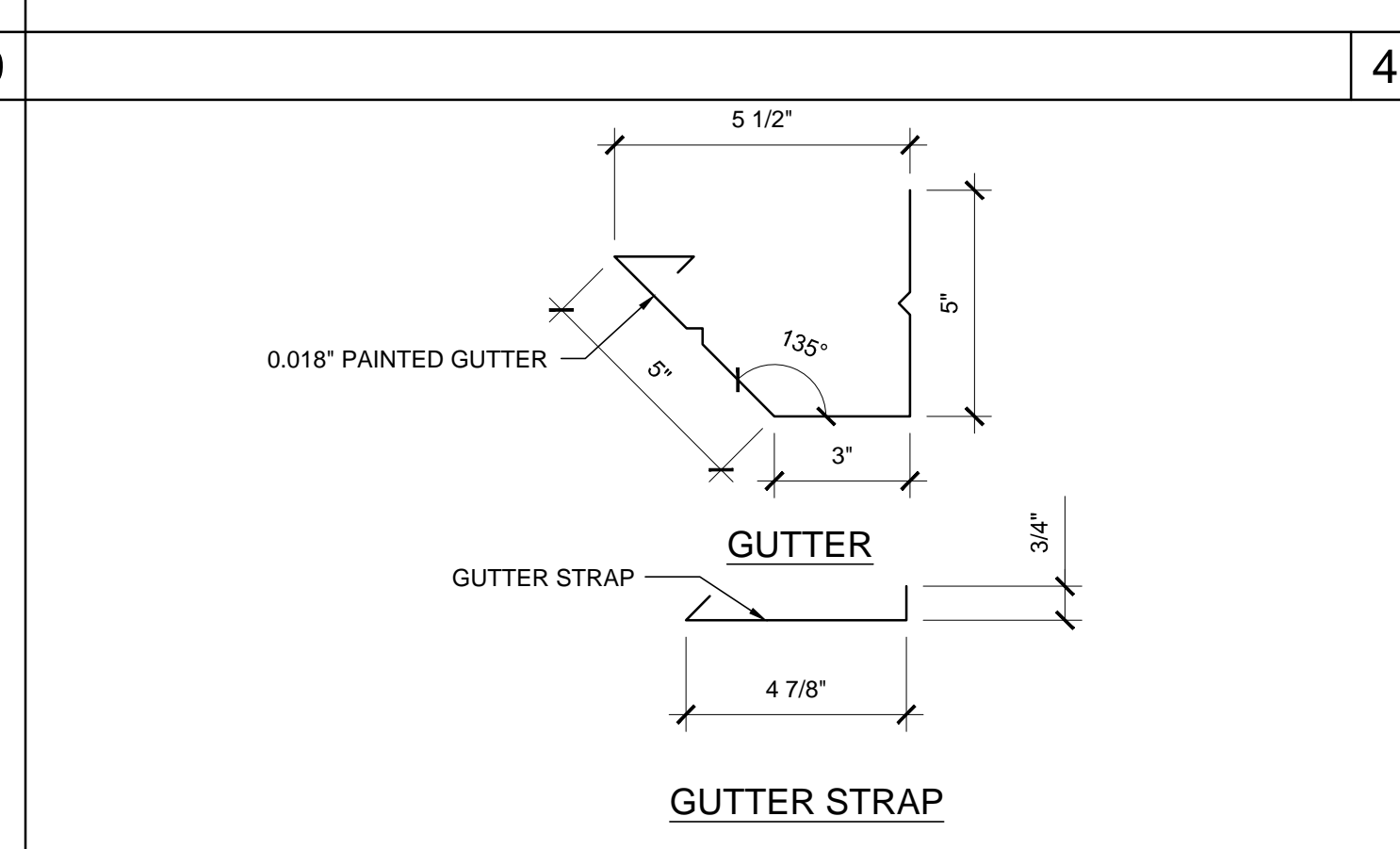
DOWNSPOUT ATTACHMENT SCALE : 3"=1'-0" 20



MODULE LINE ROOF CAP - 0.030" ROOF SCALE : 3"=1'-0" 10



0.018" GUTTER AND GUTTER STRAP SCALE : 3"=1'-0" 5



0.018" GUTTER AND GUTTER STRAP SCALE : 3"=1'-0" 5

THESE DRAWINGS AND ALL MATERIAL CONTAINED HEREIN ARE THE PROPERTY OF SILVERCREEK INDUSTRIES, INC (SCI Inc) AND SHALL NOT BE REPRODUCED, COPIED OR OTHERWISE DISPOSED OF DIRECTLY OR INDIRECTLY AND SHALL NOT BE USED IN WHOLE OR IN PART TO ASSIST IN THE MAKING OF OR FOR THE PURPOSE OF FURNISHING ANY INFORMATION FOR THE MAKING OF DRAWINGS, PRINTS, APPARATUS OR PARTS THEREOF WITHOUT THE FULL KNOWLEDGE AND WRITTEN CONSENT OF SCI Inc. ALL PATENTABLE MATERIAL CONTAINED HEREIN AND ORIGINATING WITH SCI Inc SHALL BE THE PROPERTY OF SCI Inc

SILVER CREEK INDUSTRIES, INC.
"BUILDING FOR THE NEXT GENERATION"
SILVER CREEK
2830 BARRETT AVE. PERRIS, CALIFORNIA 92571
PHONE: 951-943-5393 FAX: 951-943-2211

PROJECT NAME:
24x40 STOCKPILE OFFICE BUILDING

SHEET TITLE:
PROJECT SPECIFIC ROOF DETAILS 0.030 STANDING SEAM ROOF DECK

ARCHITECT OF RECORD SUBMISSION DATE

PROJECT SPECIFIC STATE AGENCY APPROVAL

ORIGINAL PC STATE AGENCY APPROVAL

REVISIONS

SILVER CREEK INDUSTRIES
PROJECT NO: 10914
DRAWN BY:
SCALE: AS NOTED
DATE: 04-20-17
SHEET NUMBER
A-3.50N

THESE DRAWINGS AND ALL MATERIAL CONTAINED HEREIN ARE THE PROPERTY OF SILVERCREEK INDUSTRIES, INC (SCI Inc) AND SHALL NOT BE REPRODUCED, COPIED OR OTHERWISE DISPOSED OF DIRECTLY OR INDIRECTLY AND SHALL NOT BE USED IN WHOLE OR IN PART TO ASSIST IN THE MAKING OF OR FOR THE PURPOSE OF FURNISHING ANY INFORMATION FOR THE MAKING OF DRAWINGS, PRINTS, APPARATUS OR PARTS THEREOF WITHOUT THE FULL KNOWLEDGE AND WRITTEN CONSENT OF SCI Inc.
ALL PATENTABLE MATERIAL CONTAINED HEREIN AND ORIGINATING WITH SCI Inc SHALL BE THE PROPERTY OF SCI Inc

SILVER CREEK INDUSTRIES, INC.



2830 BARRETT AVE. PERRIS, CALIFORNIA 92571
PHONE: 951-943-5393 FAX: 951-943-2211

PROJECT NAME:

24x40 STOCKPILE OFFICE BUILDING

SHEET TITLE:

PROJECT SPECIFIC EXTERIOR ELEVATIONS

ARCHITECT OF RECORD
SUBMISSION DATE

PROJECT SPECIFIC STATE AGENCY APPROVAL

ORIGINAL PC STATE AGENCY APPROVAL

REVISIONS

1	
2	
3	
4	
5	
6	
7	
8	

SILVER CREEK INDUSTRIES

PROJECT NO: 10914

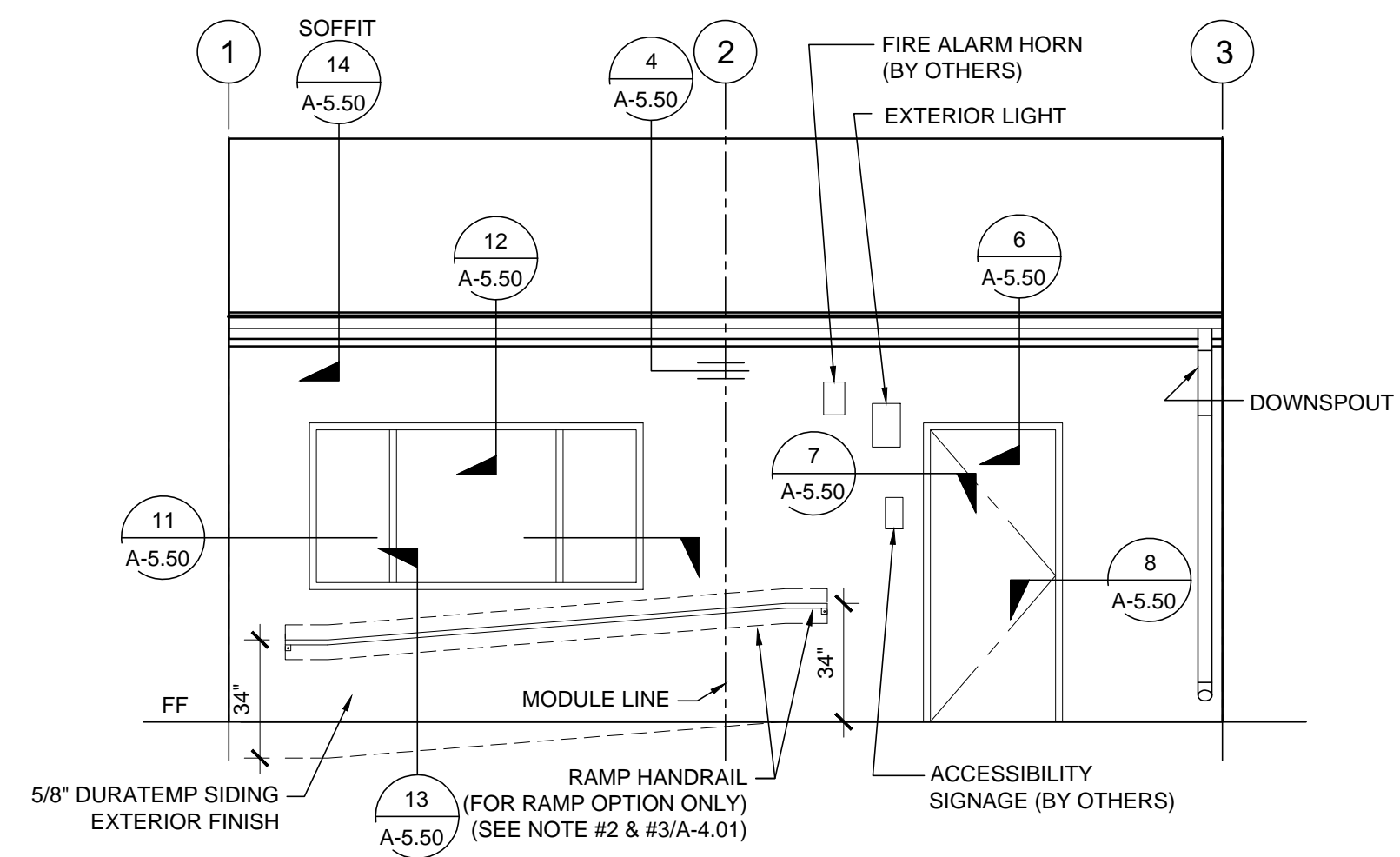
DRAWN BY:

SCALE: AS NOTED

DATE: 04-20-17

SHEET NUMBER

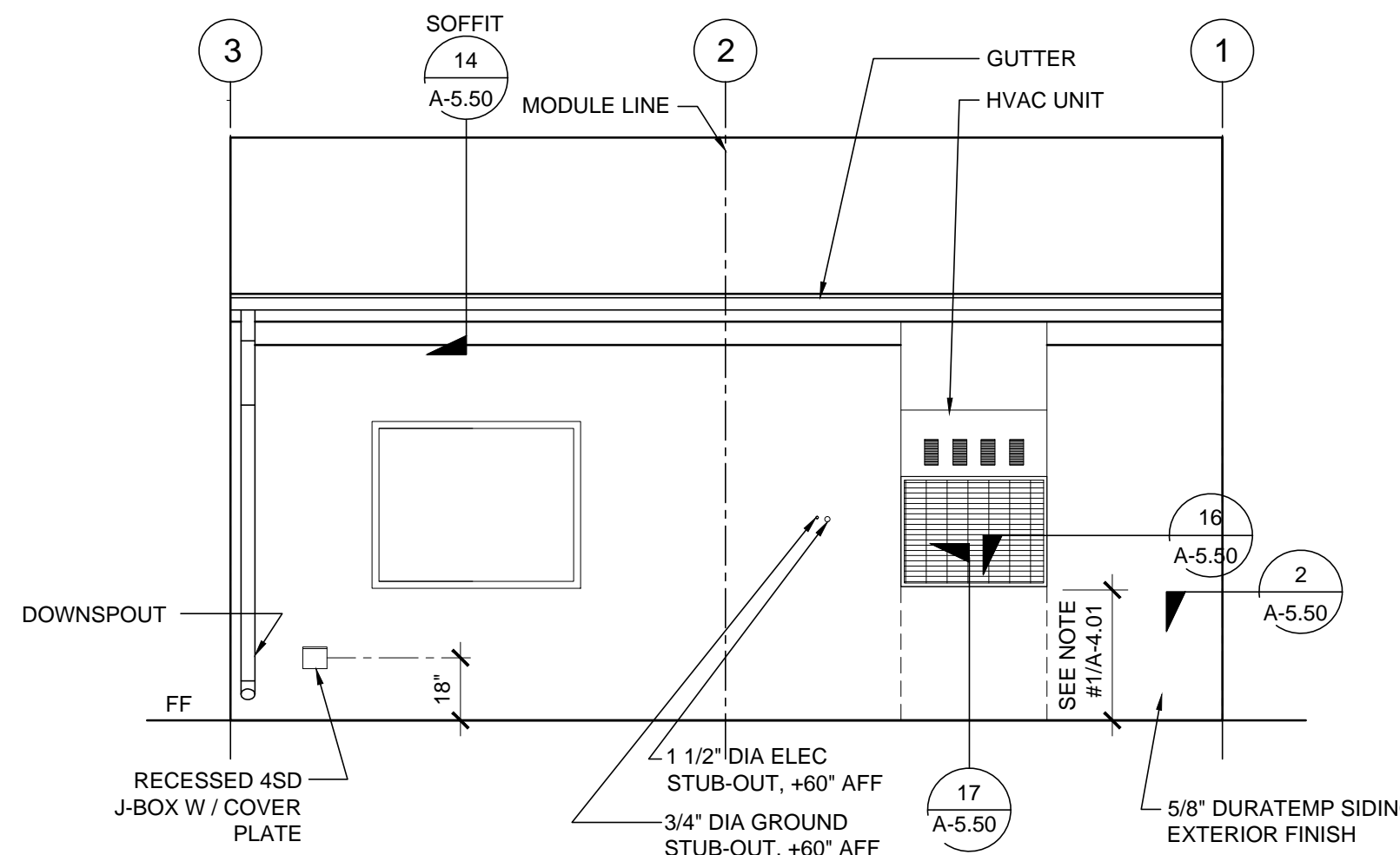
A-4.01N



PAINT FINISH NOTE
EXTERIOR SIDING - FLAT
EXTERIOR TRIM - SEMI GLOSS
EXTERIOR DOORS AND FRAMES - GLOSS
GUTTERS & DOWNSPOUTS - SEMI GLOSS

EXTERIOR ELEVATIONS - FRONT - DUAL SLOPE

SCALE: 1/4" = 1' - 0" 1



EXTERIOR ELEVATIONS - REAR - DUAL SLOPE

SCALE: 1/4" = 1' - 0" 2

SCALE: 1/4" = 1' - 0" 3

SCALE: 1/4" = 1' - 0" 4

THESE DRAWINGS AND ALL MATERIAL CONTAINED HEREIN ARE THE PROPERTY OF SILVERCREEK INDUSTRIES, INC (SCI Inc) AND SHALL NOT BE REPRODUCED, COPIED OR OTHERWISE DISPOSED OF DIRECTLY OR INDIRECTLY AND SHALL NOT BE USED IN WHOLE OR IN PART TO ASSIST IN THE MAKING OF OR FOR THE PURPOSE OF FURNISHING ANY INFORMATION FOR THE MAKING OF DRAWINGS, PRINTS, APPARATUS OR PARTS THEREOF WITHOUT THE FULL KNOWLEDGE AND WRITTEN CONSENT OF SCI Inc.
 ALL PATENTABLE MATERIAL CONTAINED HEREIN AND ORIGINATING WITH SCI Inc SHALL BE THE PROPERTY OF SCI Inc

SILVER CREEK INDUSTRIES, INC.



2830 BARRETT AVE. PERRIS, CALIFORNIA 92571
 PHONE: 951-943-5393 FAX: 951-943-2211

PROJECT NAME:

24x40 STOCKPILE OFFICE BUILDING

SHEET TITLE:

PROJECT SPECIFIC INTERIOR ELEVATIONS

ARCHITECT OF RECORD
 SUBMISSION DATE

PROJECT SPECIFIC STATE AGENCY APPROVAL

ORIGINAL PC STATE AGENCY APPROVAL

REVISIONS

1	
2	
3	
4	
5	
6	
7	
8	

SILVER CREEK INDUSTRIES

PROJECT NO: 10914

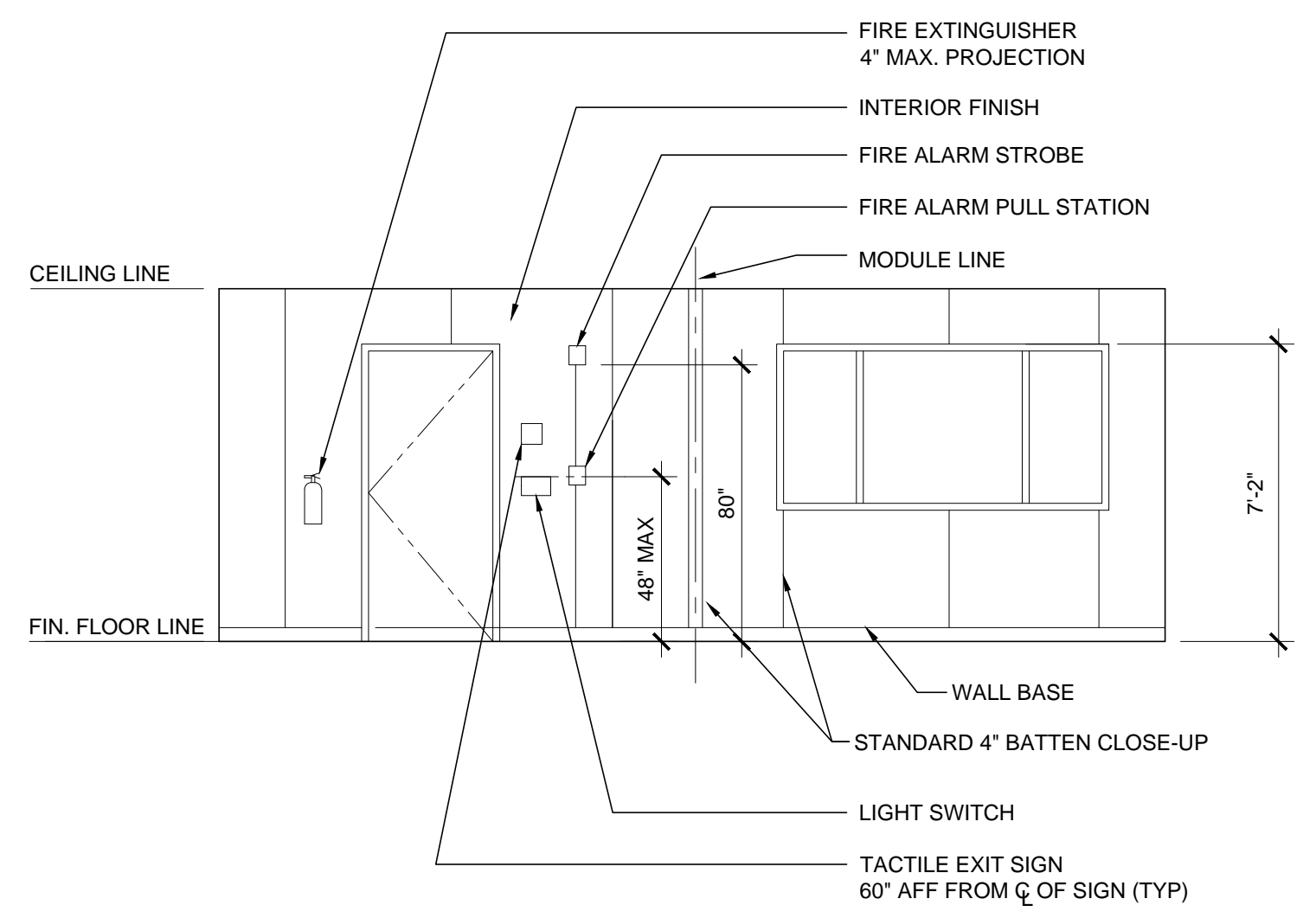
DRAWN BY:

SCALE: AS NOTED

DATE: 04-20-17

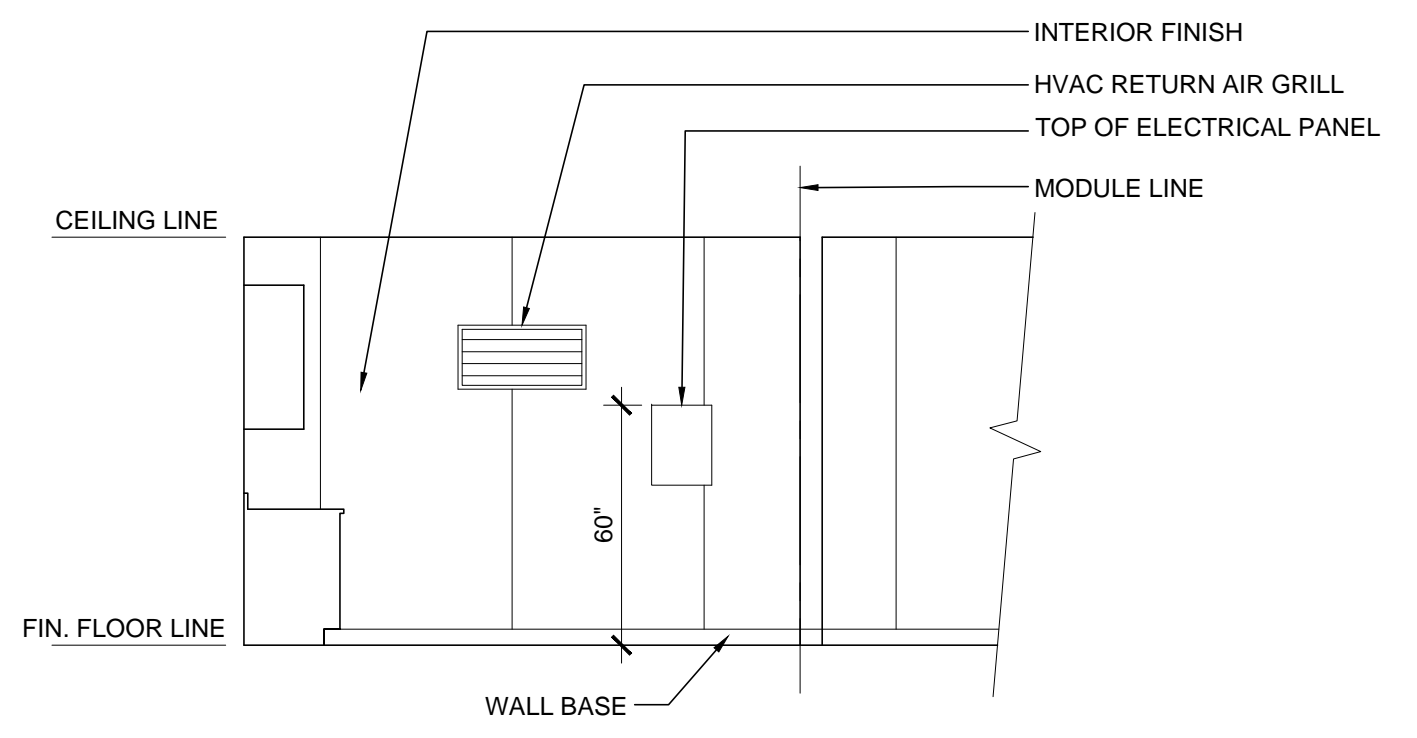
SHEET NUMBER

A-6.01N



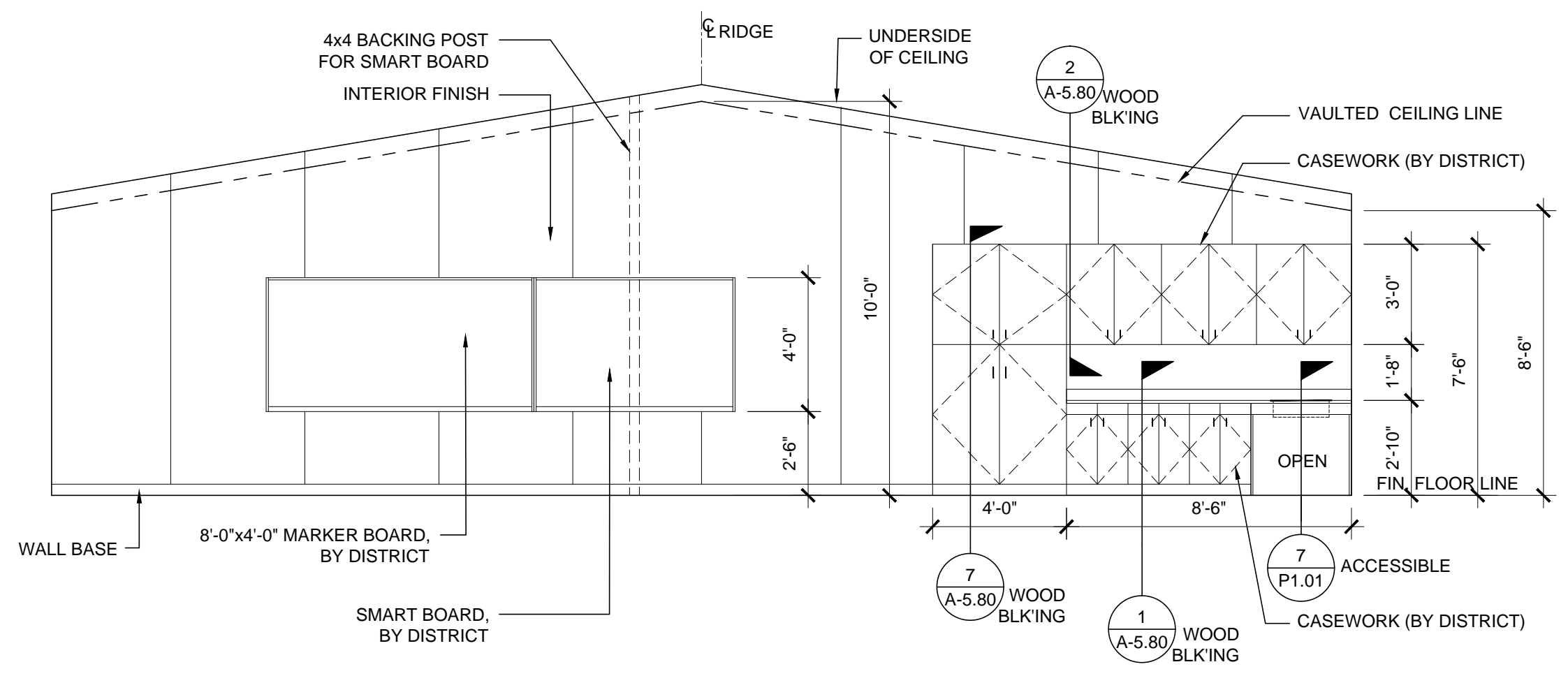
INTERIOR ELEVATION

SCALE: 1/4" = 1' - 0" 3



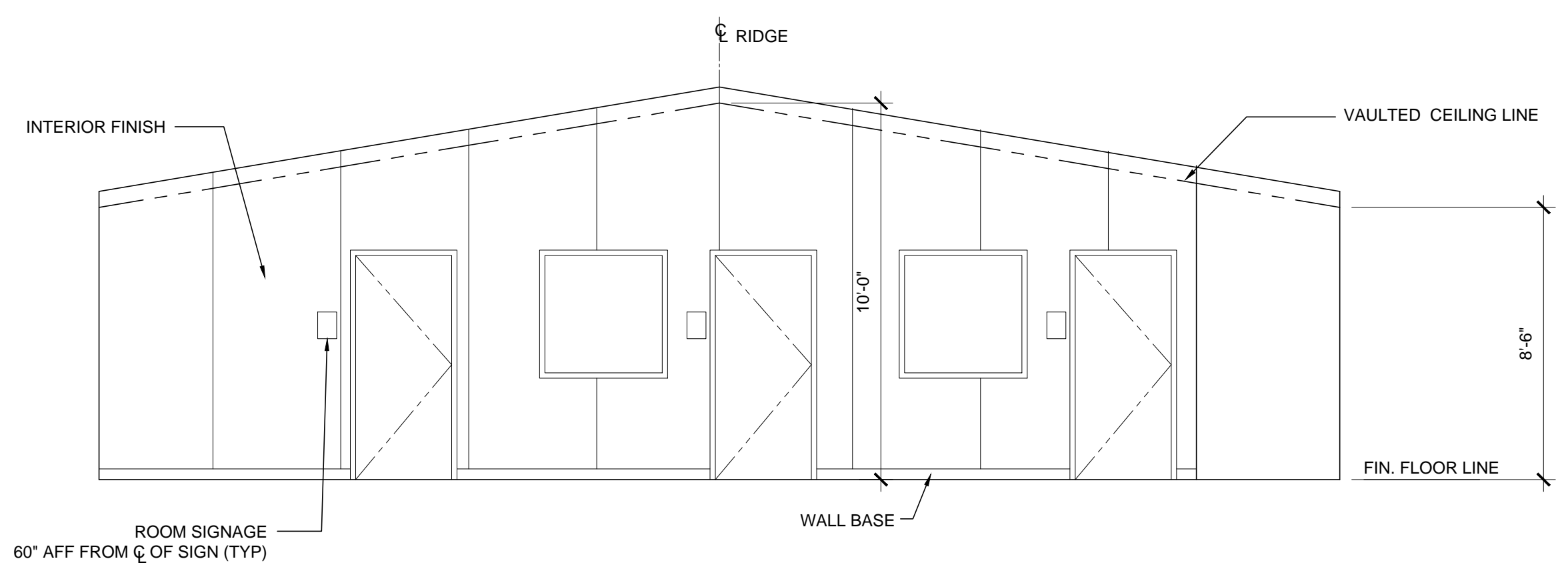
INTERIOR ELEVATION

SCALE: 1/4" = 1' - 0" 1



INTERIOR ELEVATION

SCALE: 1/4" = 1' - 0" 4



INTERIOR ELEVATION

SCALE: 1/4" = 1' - 0" 2

THESE DRAWINGS AND ALL MATERIAL CONTAINED HEREIN ARE THE PROPERTY OF SILVERCREEK INDUSTRIES, INC (SCI Inc) AND SHALL NOT BE REPRODUCED, COPIED OR OTHERWISE DISPOSED OF DIRECTLY OR INDIRECTLY AND SHALL NOT BE USED IN WHOLE OR IN PART TO ASSIST IN THE MAKING OF OR FOR THE PURPOSE OF FURNISHING ANY INFORMATION FOR THE MAKING OF DRAWINGS, PRINTS, APPARATUS OR PARTS THEREOF WITHOUT THE FULL KNOWLEDGE AND WRITTEN CONSENT OF SCI Inc.
ALL PATENTABLE MATERIAL CONTAINED HEREIN AND ORIGINATING WITH SCI Inc SHALL BE THE PROPERTY OF SCI Inc

SILVER CREEK INDUSTRIES, INC.



2830 BARRETT AVE. PERRIS, CALIFORNIA 92571
PHONE: 951-943-5393 FAX: 951-943-2211

PROJECT NAME:

24x40 STOCKPILE OFFICE BUILDING

SHEET TITLE:

PROJECT SPECIFIC MECHANICAL PLAN

ARCHITECT OF RECORD
SUBMISSION DATE

PROJECT SPECIFIC STATE AGENCY APPROVAL

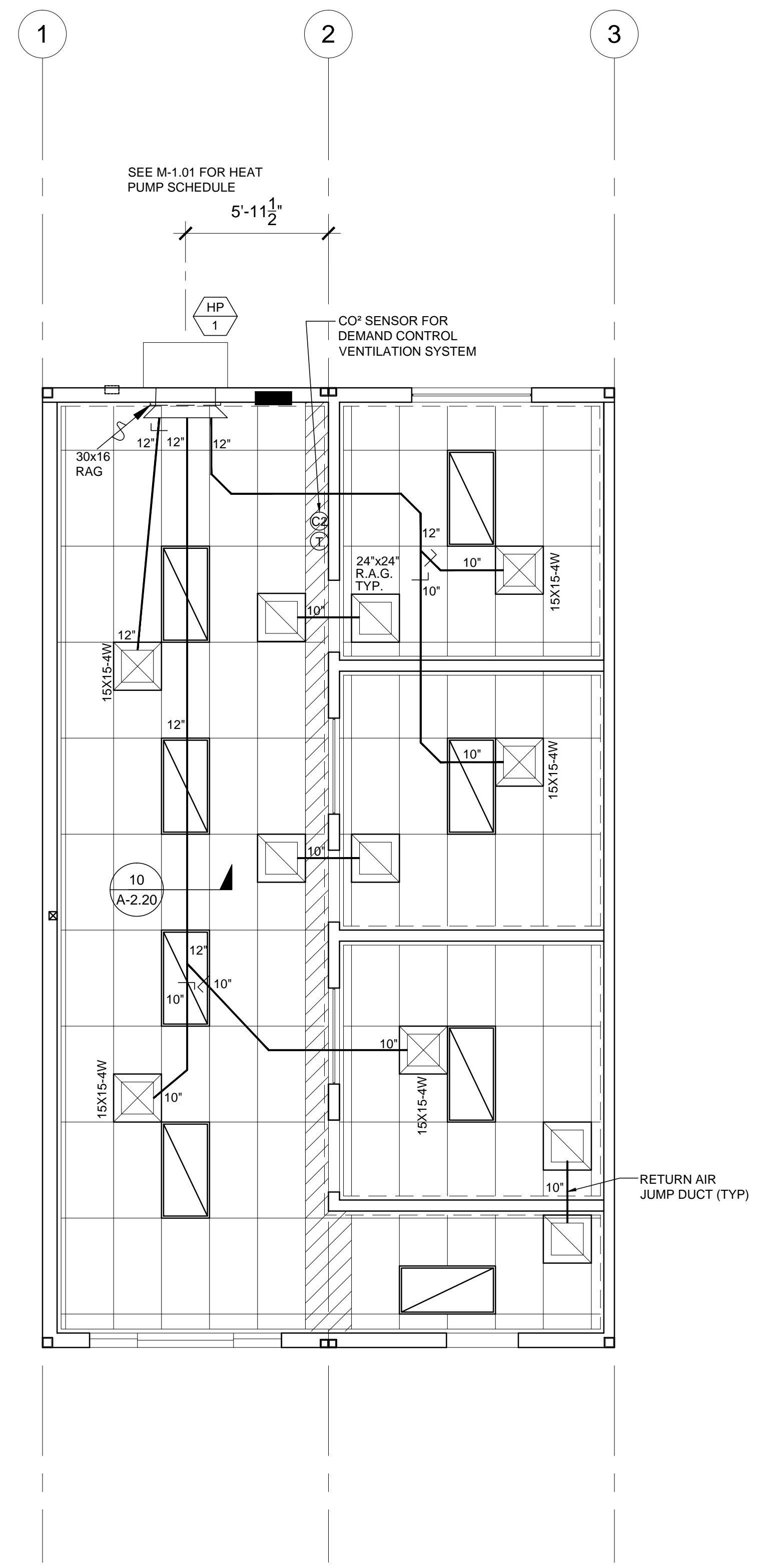
ORIGINAL PC STATE AGENCY APPROVAL

REVISIONS	
1	
2	
3	
4	
5	
6	
7	
8	

SILVER CREEK INDUSTRIES
PROJECT NO: 10914
DRAWN BY:
SCALE: AS NOTED
DATE: 04-20-17

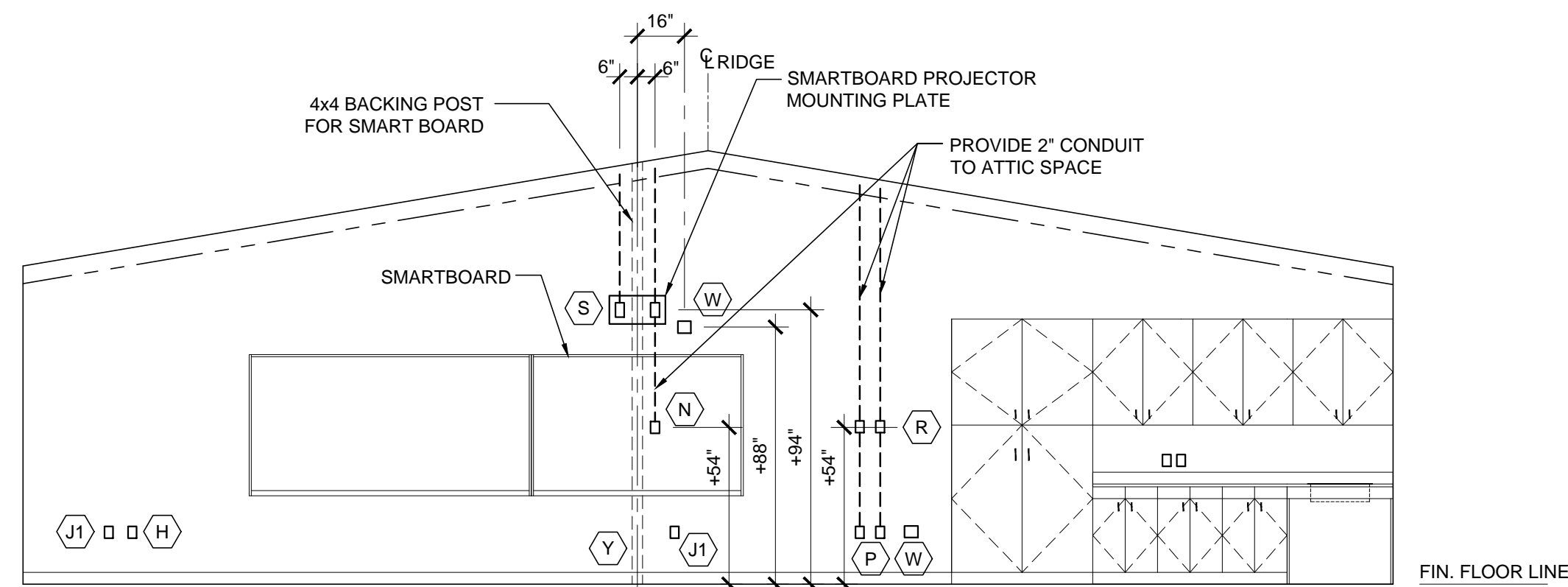
SHEET NUMBER
M-1.01N

NOTE:
PROVIDE ECONOMIZER W/ HVAC UNIT.
SEE M-1.01 FOR MECHANICAL SCHEDULE



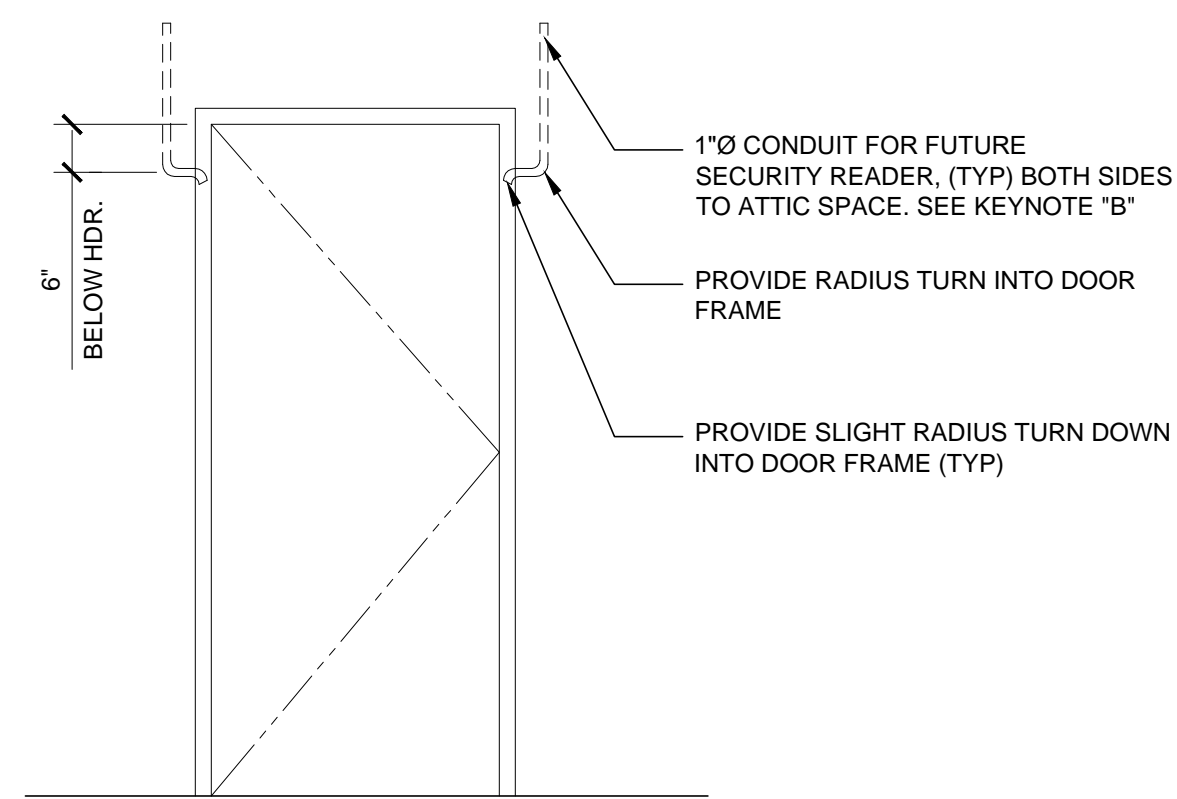
MECHANICAL PLAN

SCALE: 1/4" = 1' - 0" 1



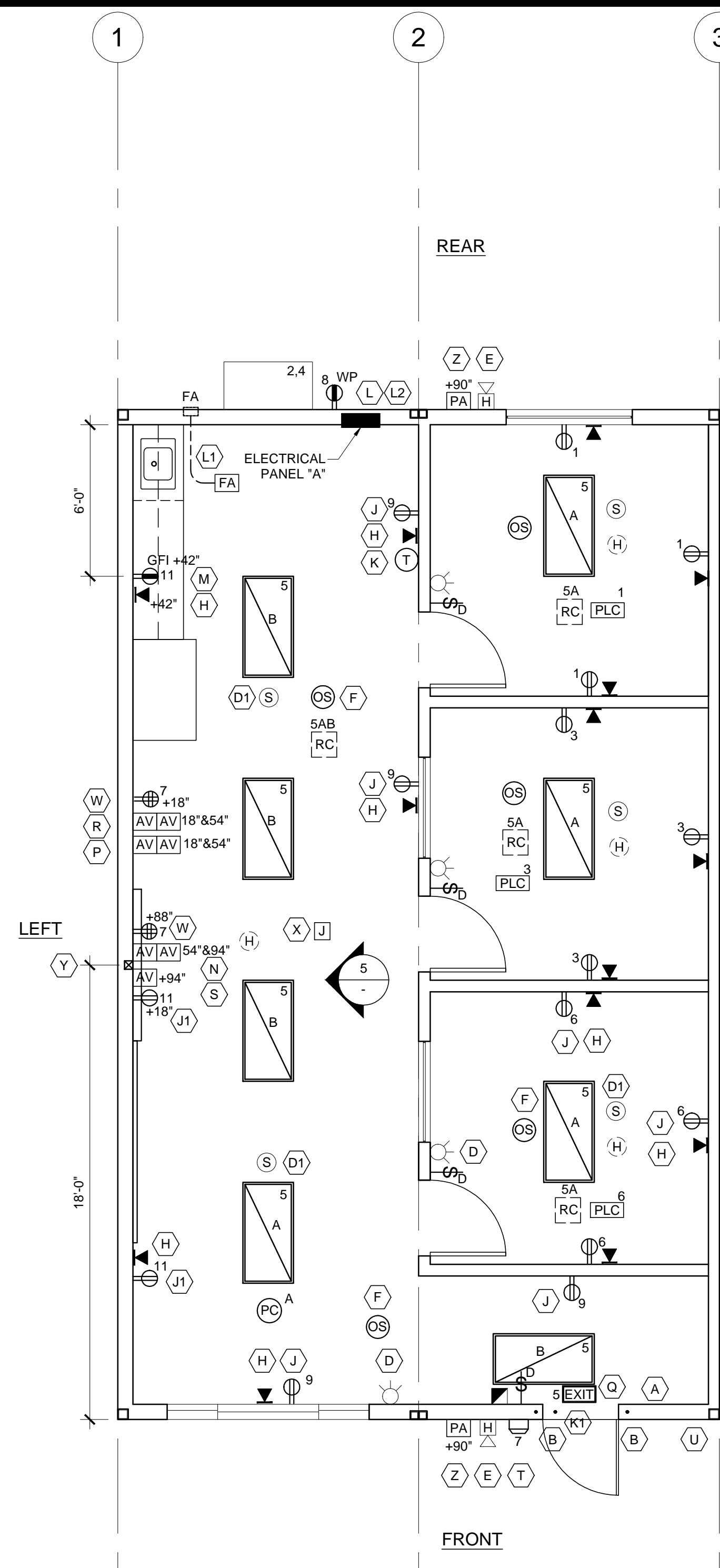
SMART BOARD WALL ELEVATION

SCALE: 1/4" = 1'-0" 5



DOOR CONDUIT DETAIL

SCALE: 1/2" = 1'-0" 6



ELECTRICAL PLAN

SCALE: 1/4" = 1'-0" 3

PANEL: A S/N:	PHASE: SINGLE	VOLTS: 120/208	BUSS: 200 AMP	MAIN: 200 AMP	LOCATION:		FEED:		MOUNTING:								
					INTERIOR	REAR	RECESSED										
OBJECT DESCRIPTION	WATT PER	NO. OF	LCL	WATTS	BRK	POLE	SIZE	NO.	WIRE	NO.	WATT PER	OBJECT DESCRIPTION					
RECEPTS	180	3		540	20	1	#12	1	X	2	#6	2	60	6032	1	6032	4 TON HP
RECEPTS	180	3		540	20	1	#12	3	X	4	#6	/	/	6032	1	6032	4 TON HP
INT. LIGHTS	56	8	x	448	20	1	#12	5	X	6	#12	1	20	540	3	180	RECEPTS
QUAD RECEPTS	360	2		720	20	1	#12	7	X	8	#12	1	20	180	1	180	EXT RECEPT
RECEPTS	180	4		720	20	1	#12	9	X	10	#12	1	20	150	1	150	FIRE ALARM
RECEPTS	180	3		540	20	1	#12	11	X	12	#12	1	20	30	x	30	EXT. LIGHT
				0				13	X	14				0			
				0				15	X	16				0			
				0				17	X	18				0			
				0				19	X	20				0			
LEG TOTALS				1708										6722		6242	LEG TOTALS
LCL=119.5+16472=16591.5																	
TOTAL WATTS=16591.5																LEG BALANCE = 2.4%	
																TOTAL AMPS: 79.77	

ELECTRICAL PANEL

4

KEYNOTE REFERENCE

Refer to floor plan(s) indicating the locations of following items.

- A - Recessed cabinet Fire Extinguisher - Install at +48" from floor.
- B - Provide 1" conduit to from attic to 6" below header. Sweep through king stud and trimmer into void area of door jamb for future door lock controls. Provide slight turn down once into jamb area.
- C - Provide surge protected duplex outlet for future IDF cabinet. Locate as indicated on floor plan. Provide circuit in electrical panel as indicated on plan.
- D - J-Box only (Horn/Strobe) - Install 4" sq. J-box (4" sq. x 2-1/8" deep) at +80" from floor. 3/4" conduit stubbed above Ceiling. Box shall be mounted flush with interior wall finish.
- D1 - J-box only (Smoke detector) - Install 4S box with 3/0 plaster ring flush with t-bar ceiling / hard lid surface. (Install per DSA approved PC plans)
- E - J-Box only (Exterior fire horn/speaker) - Install 4" sq. J-box (4" sq. x 2-1/8" deep) at +90" from floor. 3/4" conduit stubbed above Ceiling. Box shall be mounted flush with exterior wall finish.
- F - Ceiling mounted occupancy sensor. Acuity brand, model #CMR0-PDT.
- G - Install p.v.c. drain at sink area with p.v.c. vent pipe up in wall. Daylight vent through roof and drain through wall just above bottom plate. Do not install water supply line.
- H - J-box only (Data outlet) - 3/4" conduit stubbed above Ceiling.
- J - Standard duplex outlet location. Provide circuits in electrical panel as indicated on plan. These locations indicated on the plans are the only locations where outlets are required. Please do not deviate.
- J1 - Standard surge protected duplex outlet location. Provide circuits in electrical panel as indicated on plan. These locations indicated on the plans are the only locations where outlets are required. Please do not deviate.
- J2 - J-Box only (future power). Provide conduit raceway to electrical panel. No wires or outlet at this time.
- K - J-Box only (T-Stat). BCSD will provide T-stat. Please note that the control wire for the HVAC unit will need to be factory installed from the unit to the j-box for future inclusion of standard District t-stats.
- K1 - Provide time delayed HVAC shut down door switch. Intent is to shut down HVAC unit if door is left open too long.
- L - Power and ground entrances to the rels need to be accomplished by adding a conduit nipple for the ground and power wires at the rear of the panels through the wall and finish.
- L1 - 4S box with 1" conduit into attic space to 4S deep box for fire alarm cable.
- L2 - Provide 3/4" conduit from electrical panel to attic for future grounding purposes.
- M - G.F.I. receptacle. Mount as indicated on plan at cabinet location. Mount at standard height in classroom areas. Provide circuit in electrical panel as indicated on plan.
- N - Single gang deep mud ring. Locate at +94" above finish floor. Single gang deep mud ring. Locate at +54" above finish floor. Provide 2" conduit anchored to framing between mud rings and 2" conduit from top mud ring to above ceiling. No hard connections at mud rings. Provide pull string.
- P - Double gang deep mud ring. Locate at +54" above finish floor. Single gang deep mud ring. Locate at standard mounting height. Provide 2" conduit anchored to framing between mud rings and 2" conduit from top mud ring to above ceiling. No hard connections at mud rings. Provide pull string.
- Q - Install electric lighted exit sign with battery backup.
- R - Single gang deep mud ring. Locate at +54" above finish floor. Single gang deep mud ring. Locate at standard mounting height. Provide 2" conduit anchored to framing between mud rings and 2" conduit from top mud ring to above ceiling. No hard connections at mud rings. Provide pull string.
- S - Single gang deep mud ring at +94" above finish floor. Provide 2" conduit anchored to framing from mud ring to above ceiling. No hard connection at mud ring. Provide pull string.
- T - Exterior light fixture with built in photo cell. RAB Lighting Slim 18 with photocell.
- U - Provide and install Trimco #1254 wall mounted stop/door holder at +78".
- V - Provide additional rectangular opening ay transverse roof beams for future data conduits.
- W - Wall mounted surge protected quadplex outlet. Locate at +88" above finish floor and 16" from center of smart board. Provide circuit in electrical panel as indicated on plan.
- X - Provide single gang box with ceiling mounting bracket at center of room in T-bar ceiling.
- Y - Provide 4x4 backing post at center of room for smart board bracket.
- Z - J-box only (Exterior PA system speaker) Install at +90" from floor.

KEYNOTES

1

- NOTE:
1. SEE SHEET E-1.01 FOR ADDITIONAL NOTES AND LEGENDS NOT SHOWN HERE.
 2. PROVIDE STAINLESS STEEL COVER PLATES FOR RECEPTACLES AND DATA OUTLETS.

- 2x4 CEILING RECESSED LIGHT, LED LIGHT FIXTURE WITH DIMMING, ORACLE OT-LED SERIES MODEL # OT-LED-600L-DIM10-MVOLT-40K-85-A12 WATTAGE: 56 WATTS
- WALLPACK LIGHT FIXTURE 'RAB LIGHTING' SLIM 18 W/ PHOTOCELL
- QUADPLEX (WALL MOUNTED) RECEPTACLE 15A - 125V - 3 WIRE. MOUNT AT +18" AFF U.O.N. TO CENTERLINE OF DEVICE
- 4S J-BOX (DATA OUTLET) W/ 3/4" CONDUIT STUBBED ABOVE CEILING
- WATTSTOPPER #MPL-101 PLUG LOAD CONTROLLER INSTALLED ABOVE CEILING. 1/2 OF DUPLEX RECEPTACLE WITHIN ROOM CONTROLLED BY ROOM OCCUPANCY SENSOR. OCCURS AT OFFICE AREA ONLY.
- 4S BOX WITH 1" CONDUIT INTO ATTIC SPACE TO 4S DEEP BOX FOR FIRE ALARM CABLE
- DOUBLE OR SINGLE GANG DEEP MUD RING. HEIGHT PER PLAN. PROVIDE 2" CONDUIT ANCHORED TO FRAMING BETWEEN MUD RINGS AND 2" CONDUIT FROM TOP MUD RING TO ABOVE CEILING. NO HARD CONNECTIONS AT MUD RINGS. PROVIDE PULL STRING.
- 4S J-BOX W/ 3/4" CONDUIT TO ATTIC (EXTERIOR PA SYSTEM SPEAKER) INSTALL AT +90" A.F.F.

ELECTRICAL LEGEND

2

THESE DRAWINGS AND ALL MATERIAL CONTAINED HEREIN ARE THE PROPERTY OF SILVERCREEK INDUSTRIES, INC (SCI Inc) AND SHALL NOT BE REPRODUCED, COPIED OR OTHERWISE DISPOSED OF DIRECTLY OR INDIRECTLY AND SHALL NOT BE USED IN WHOLE OR IN PART TO ASSIST IN THE MAKING OF OR FOR THE PURPOSE OF FURNISHING ANY INFORMATION FOR THE MAKING OF DRAWINGS, PRINTS, APPARATUS OR PARTS THEREOF WITHOUT THE FULL KNOWLEDGE AND WRITTEN CONSENT OF SCI Inc. ALL PATENTABLE MATERIAL CONTAINED HEREIN AND ORIGINATING WITH SCI Inc SHALL BE THE PROPERTY OF SCI Inc

SILVER CREEK INDUSTRIES, INC.



2830 BARRETT AVE. PERRIS, CALIFORNIA 92571
PHONE: 951-943-5393 FAX: 951-943-2211

PROJECT NAME:

24x40 STOCKPILE OFFICE BUILDING

SHEET TITLE:

PROJECT SPECIFIC ELECTRICAL PLAN

ARCHITECT OF RECORD SUBMISSION DATE

PROJECT SPECIFIC STATE AGENCY APPROVAL

ORIGINAL PC STATE AGENCY APPROVAL

REVISIONS

SILVER CREEK INDUSTRIES

PROJECT NO: 10914

DRAWN BY:

SCALE: AS NOTED

DATE: 04-20-17

SHEET NUMBER

E-1.01N