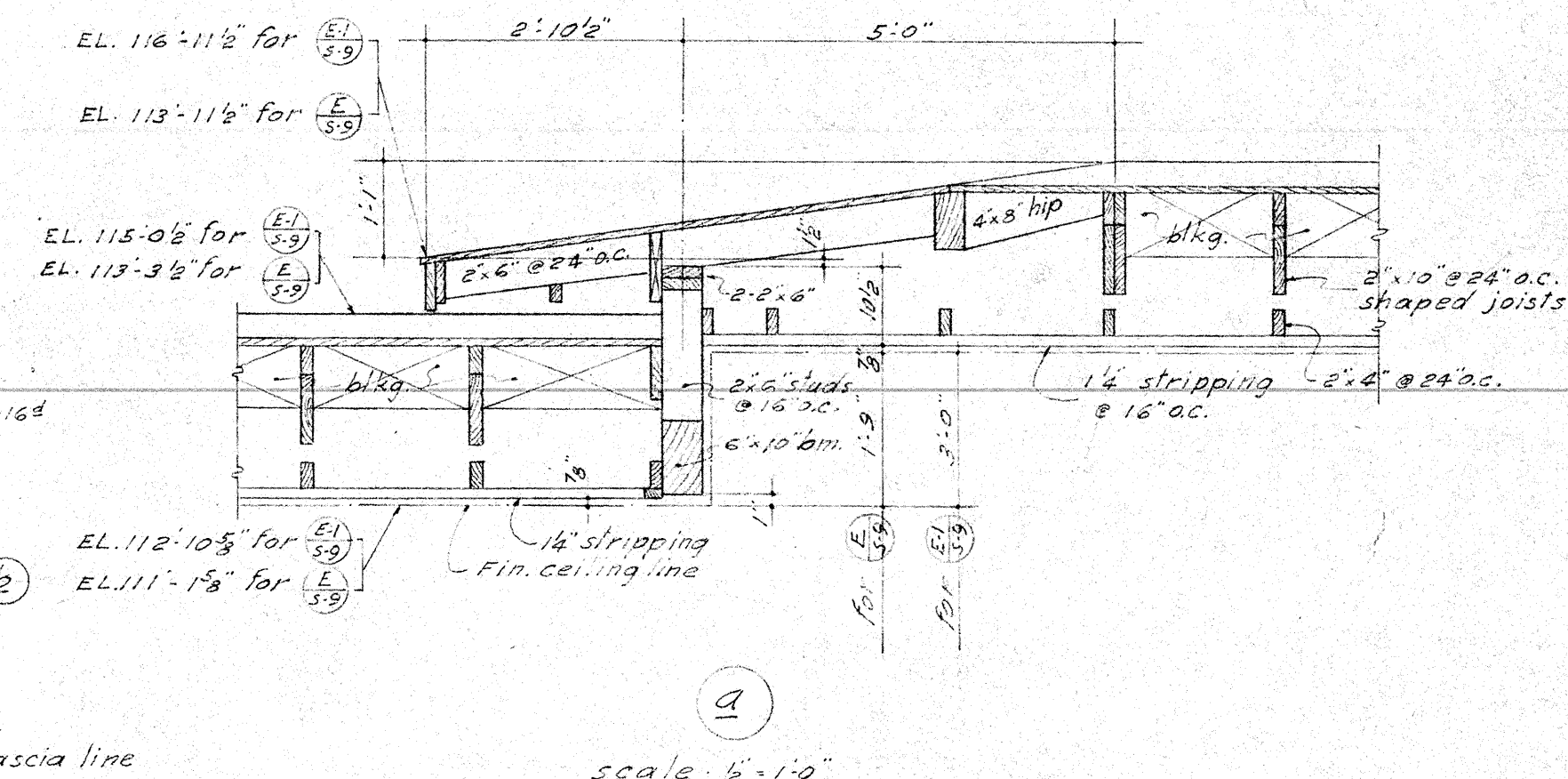
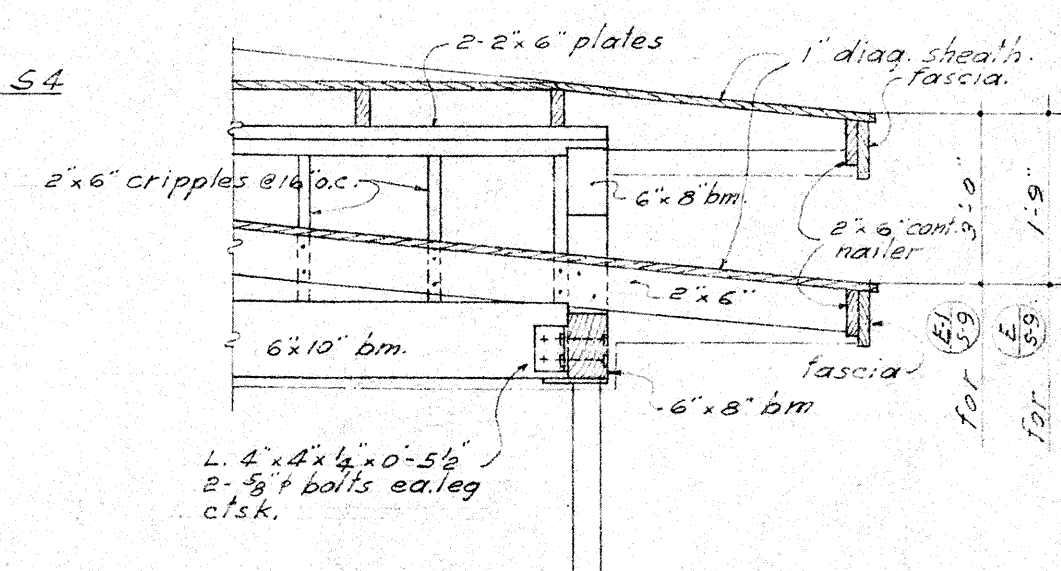


PLAN - CORRIDOR HIP FRAMING AT STEP  
scale - 1/2" = 1'-0"

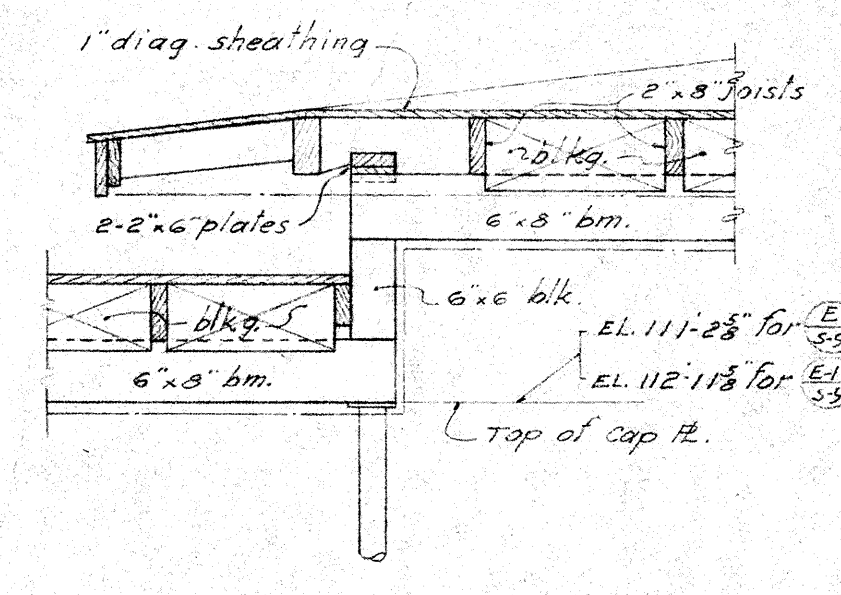
For location see Plan sheet S4



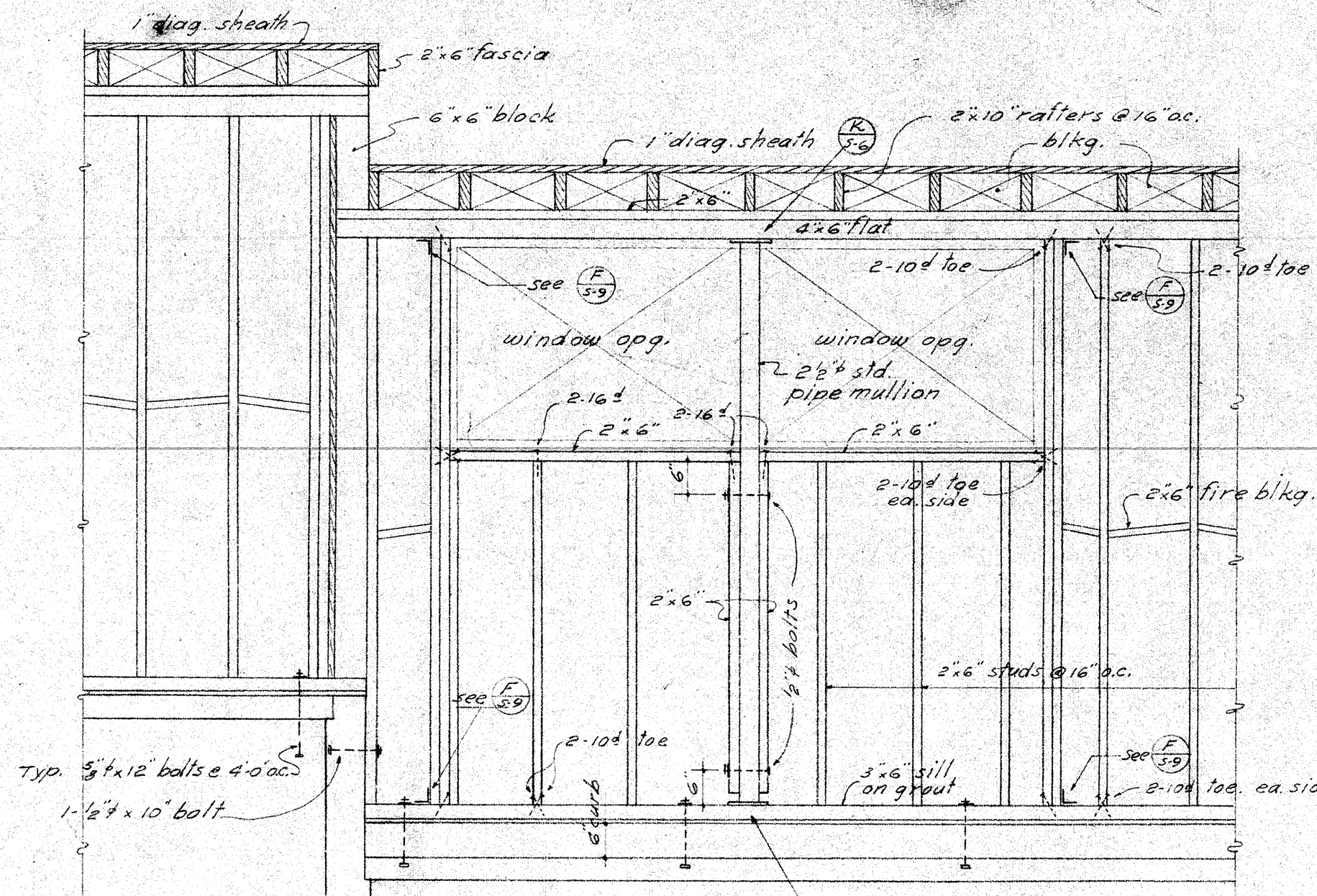
scale - 1/2" = 1'-0"



scale - 1/2" = 1'-0"

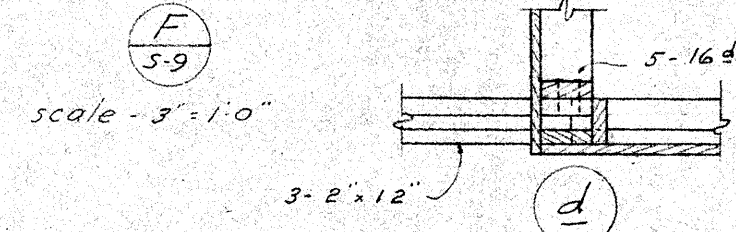


scale - 1/2" = 1'-0"

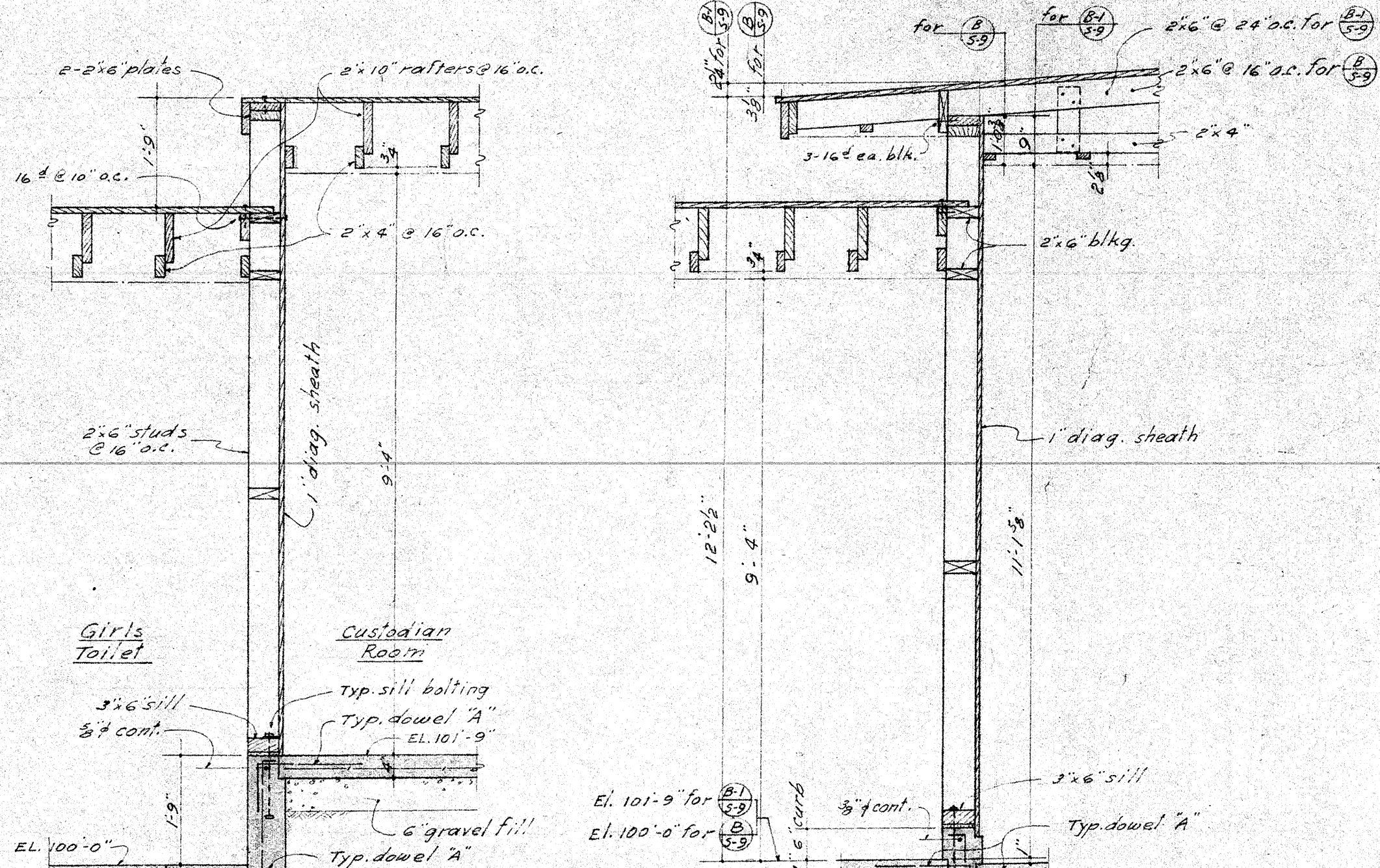


WEST WALL FRAMING AT STEP  
scale - 1/2" = 1'-0"

L. 2x2 @ 16" o.c. x 0.3" sq.  
L. 1/2" x 16 ga. x 2" wood screws  
3/8" holes



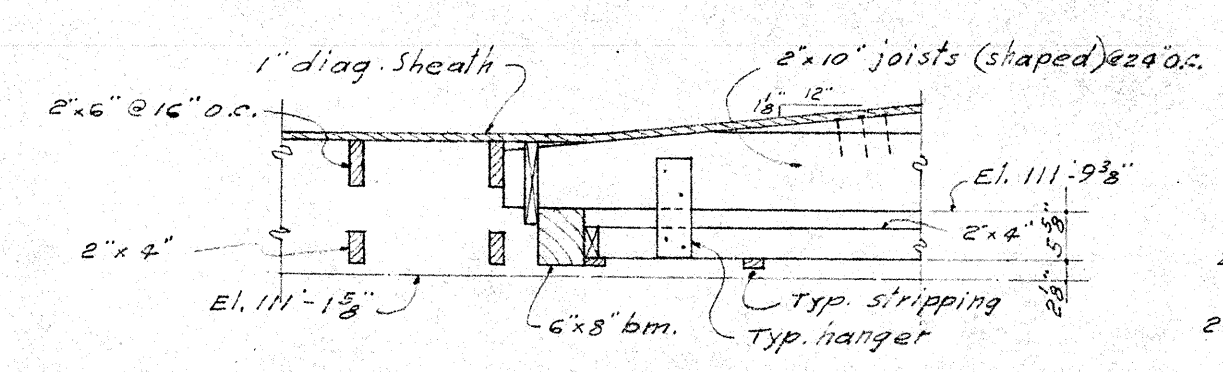
scale - 1/2" = 1'-0"



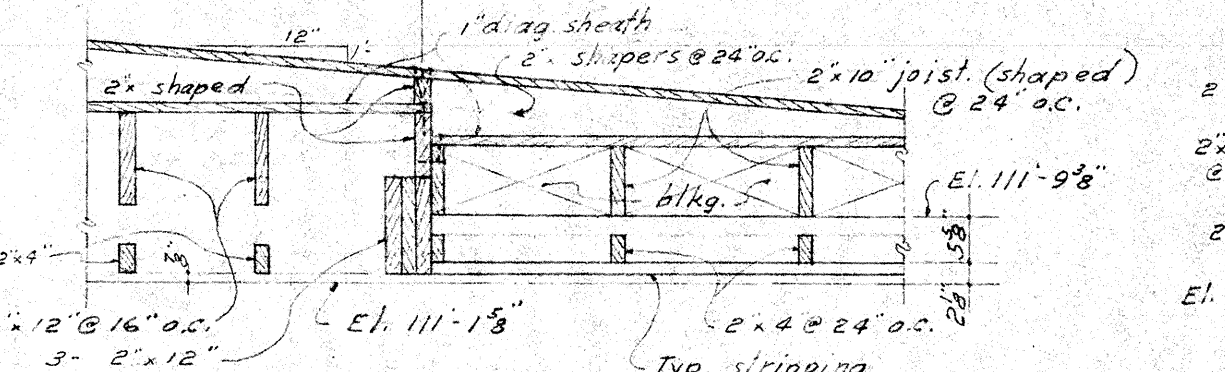
scale - 1/2" = 1'-0"

as noted

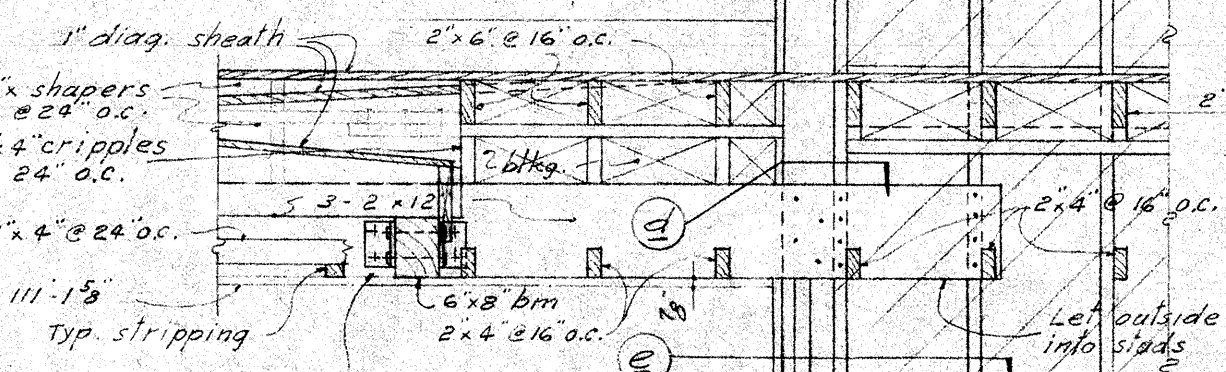
scale - 1/2" = 1'-0"



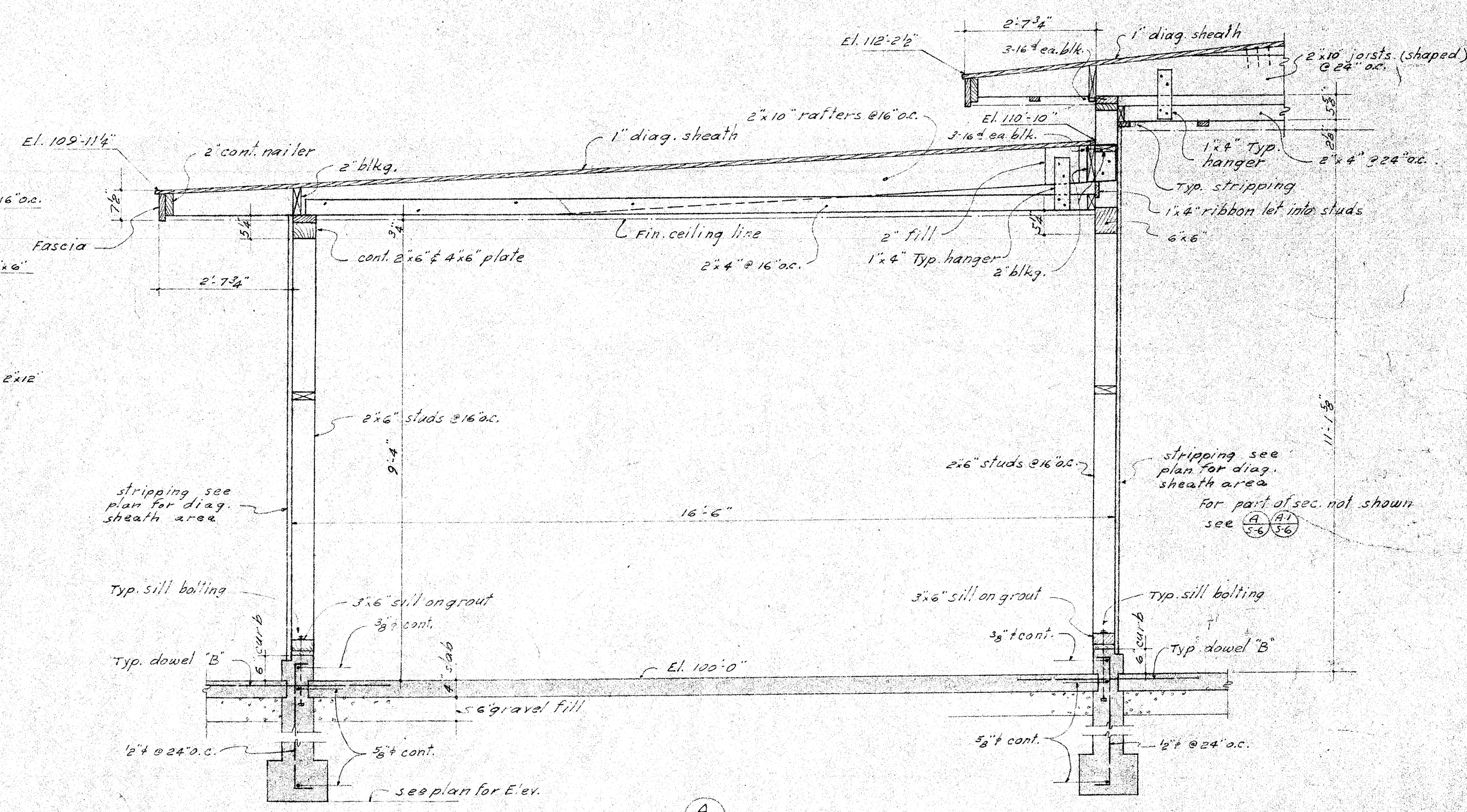
scale - 1/2" = 1'-0"



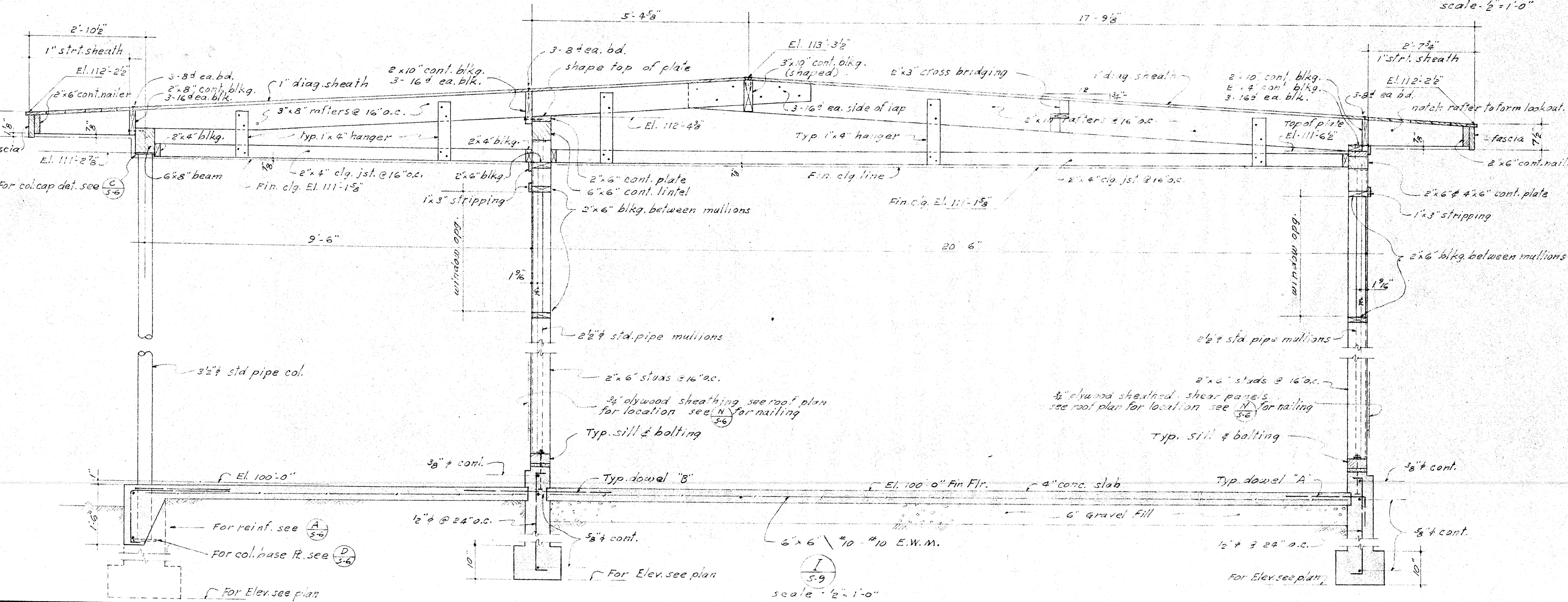
scale - 1/2" = 1'-0"



scale - 1/2" = 1'-0"



scale - 1/2" = 1'-0"



scale - 1/2" = 1'-0"

HILLMAN & NOWELL STRUCTURAL ENGINEERS ARCHITECTS BUILDING, LOS ANGELES	STATE OF CALIFORNIA DEPARTMENT OF PUBLIC WORKS DIVISION OF ARCHITECTURE	BAKERSFIELD CITY SCHOOLS 1600 K ST. BAKERSFIELD CALIF. BOARD OF EDUCATION APPROVED 7/22 1949	ELEMENTARY SCHOOL BAKERSFIELD CITY SCHOOL DISTRICT PIONEER DRIVE CALIFORNIA	DATE DRAWN BY CHECKED BY SHEET NO.
	STATE OF CALIFORNIA DEPARTMENT OF PUBLIC WORKS DIVISION OF ARCHITECTURE APPROVED 7-22-49 5743	PRESIDENT SECRETARY	ERNEST L. MCCOY AIA ARCHITECT 25 HAY BLVD. BAKERSFIELD CALIF.	SHEET NO. S9 OF 12 SHEETS