

WING-A

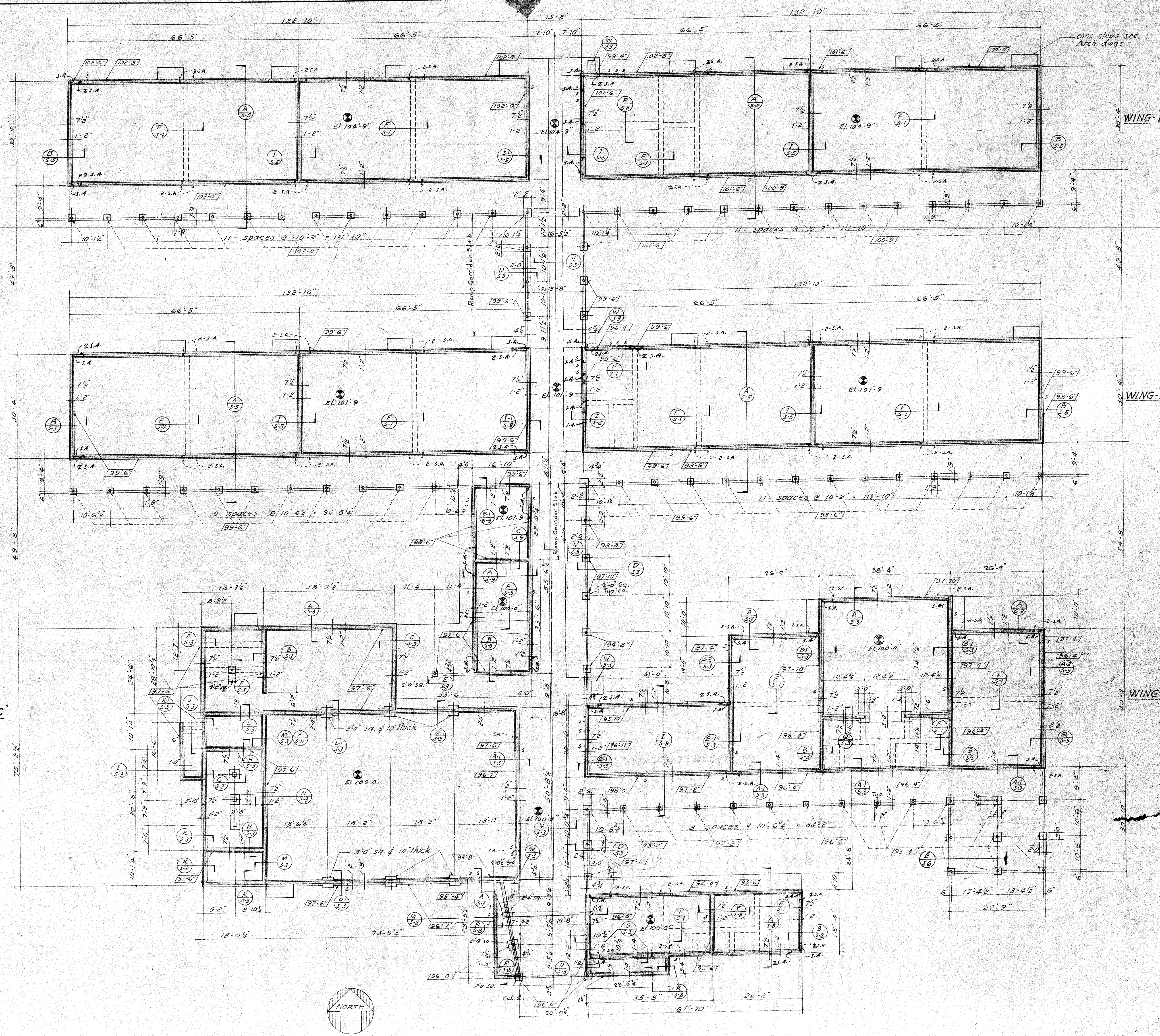
WING-D

WING-B

WING-E

WING-C

WING-F



FOUNDATION PLAN  
Scale 1/4" = 1'-0"

NOTES-  
All floors & covered walks to be a concrete slab. Slabs rest on a gravel fill reinforced with steel, to extend to center of slab unless otherwise noted.

<p>HILLMAN &amp; NOWELL CIVIL ENGINEERS 1012 18TH ST BAKERSFIELD, CALIF.</p> <p><i>Lawrence Hillman</i></p>	<p>STATE OF CALIFORNIA DEPARTMENT OF PUBLIC WORKS DIVISION OF ARCHITECTURE APPROVED: <i>William J. ...</i> 7-22-48 5743 <i>Harvey W. ...</i></p>	<p>BAKERSFIELD CITY SCHOOLS 1600 ST BAKERSFIELD CALIF. SCHOOL OF EDUCATION APPROVED: <i>William J. ...</i> 7-22-48 SECRETARY</p>	<p>ELEMENTARY SCHOOL BAKERSFIELD CITY SCHOOL DISTRICT PIONEER DRIVE BAKERSFIELD CALIFORNIA ERNEST L. MCCOY, AIA. ARCHITECT 1012 18TH ST BAKERSFIELD CALIFORNIA</p>	<p>DATE: 7/22/48 DRAWN BY: CHECKED BY: SYMBOL NO: S 2 BY: C.H.C.</p>
---	--	--	--	--