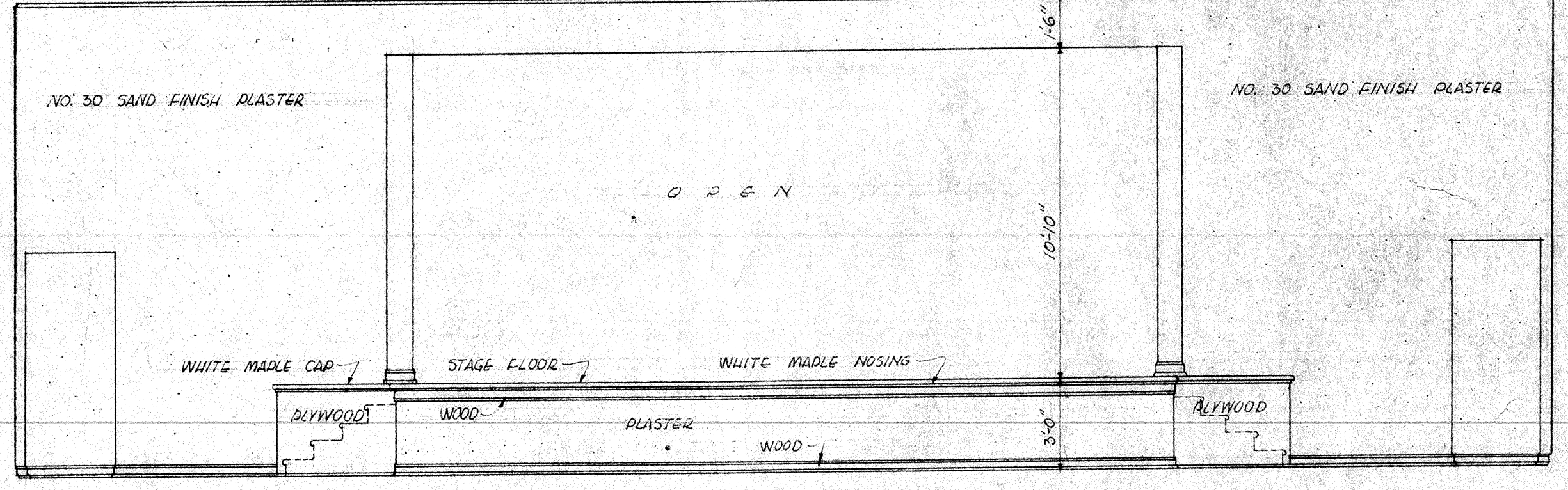
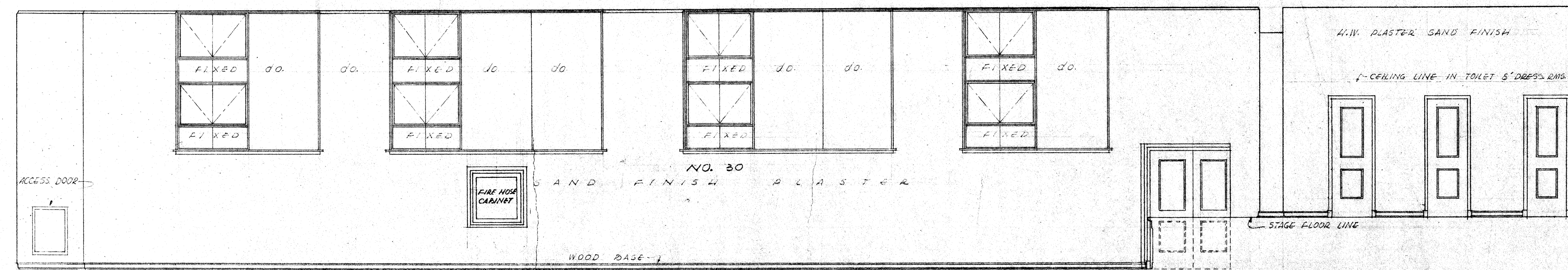


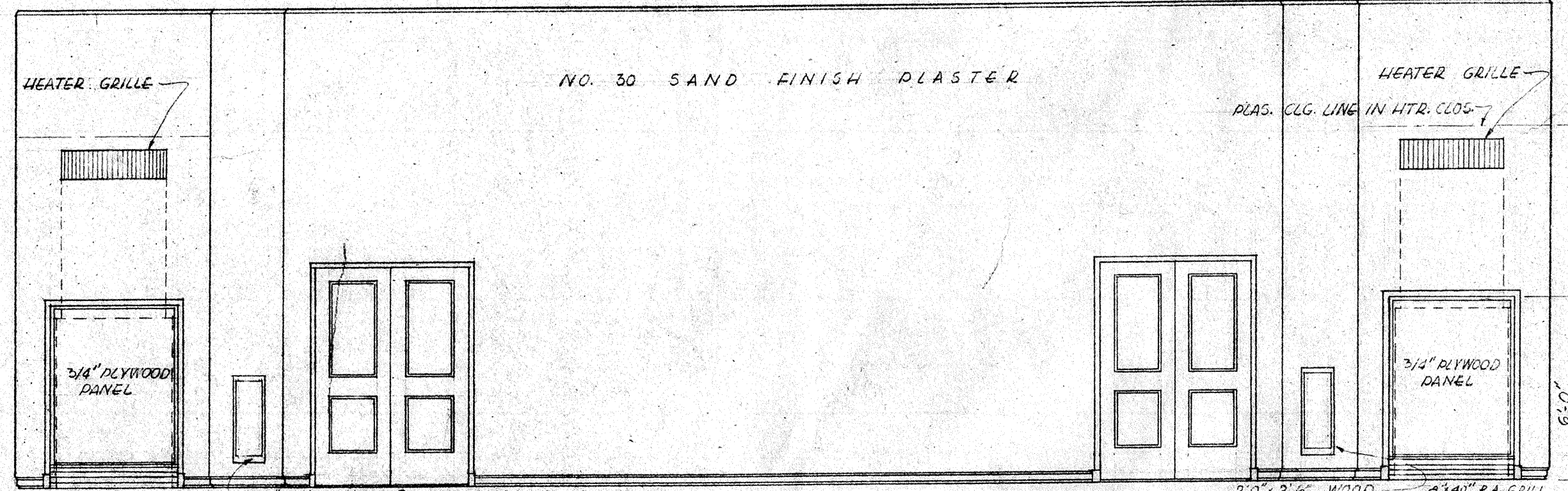
NORTH ELEVATION CAFETERIA 5' ASSEMBLY (36)
SCALE 1/4" = 1'-0"



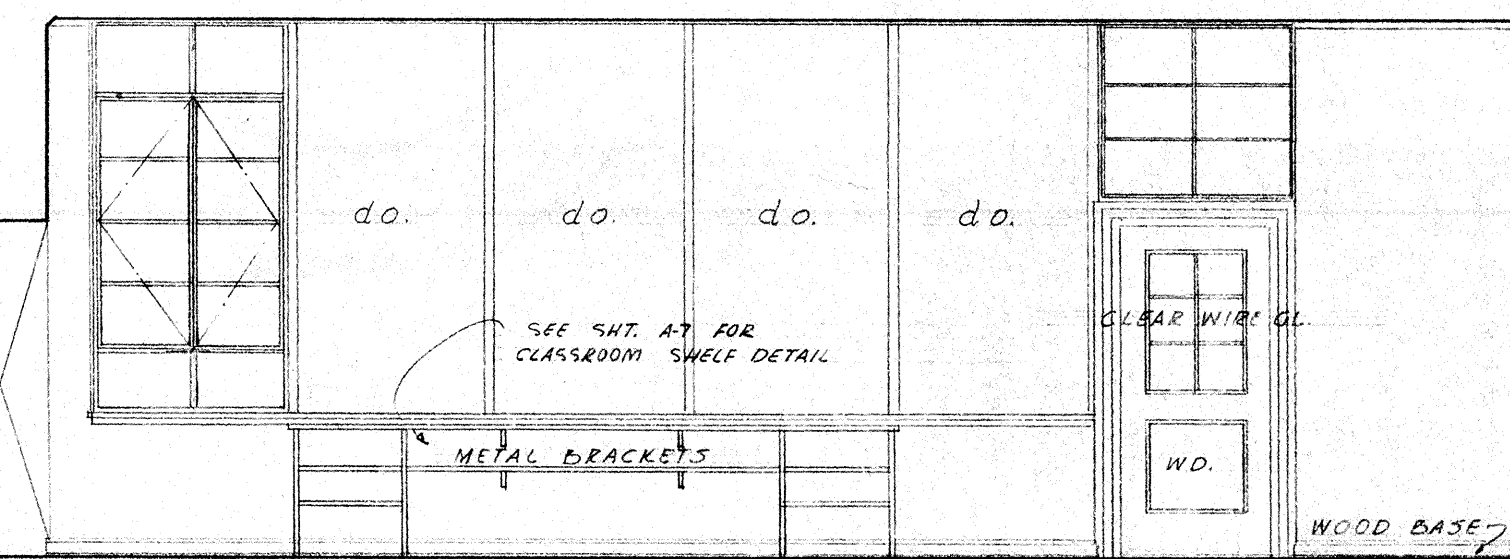
EAST ELEVATION CAFETERIA 8' ASSEMBLY (36)
SCALE 1/4" = 1'-0"



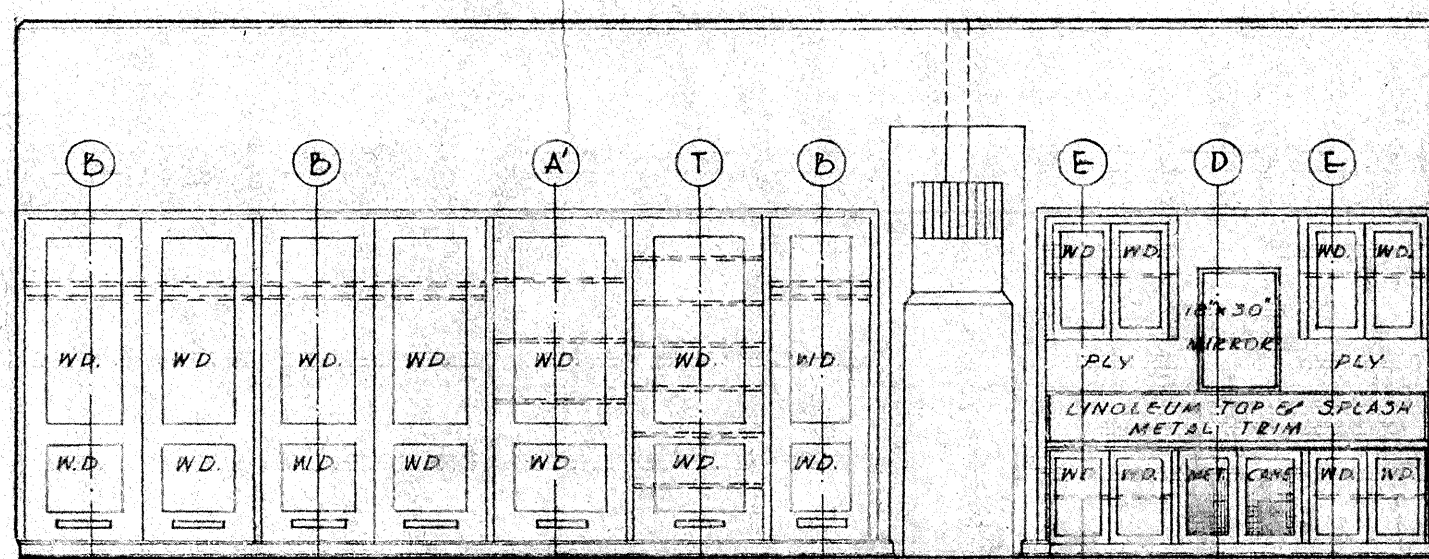
SOUTH ELEVATION CAFETERIA 5' ASSEMBLY (36)
SCALE 1/4" = 1'-0"



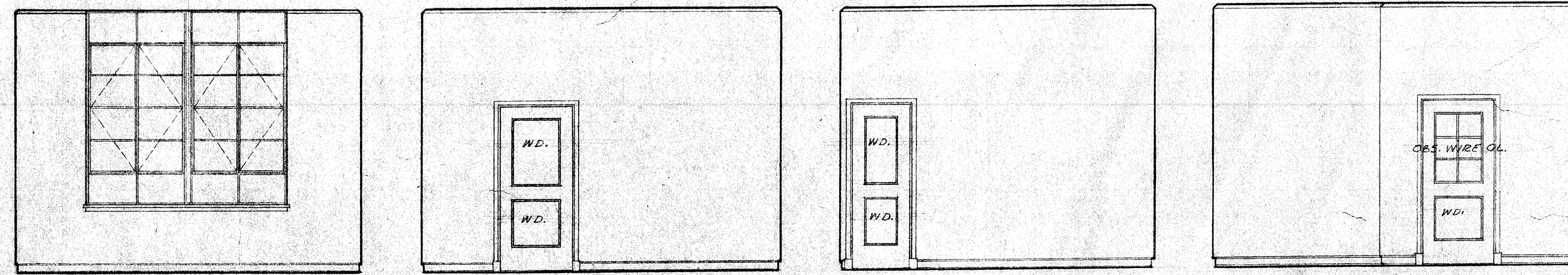
WEST ELEVATION CAFETERIA 5' ASSEMBLY (36)
SCALE 1/4" = 1'-0"



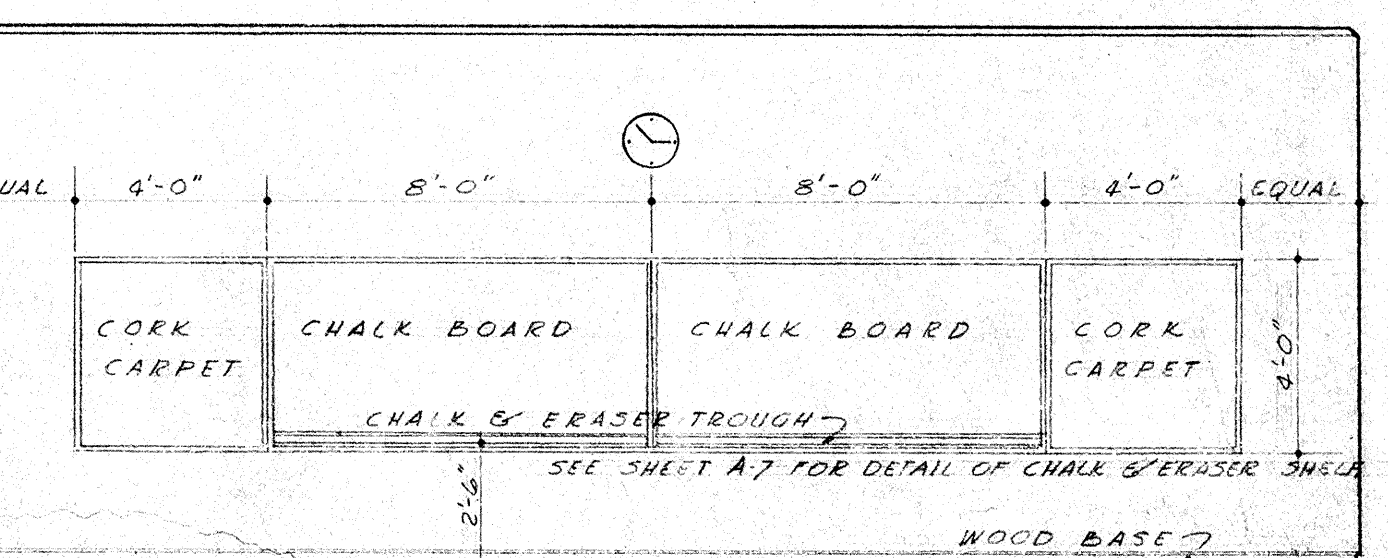
NORTH ELEVATION



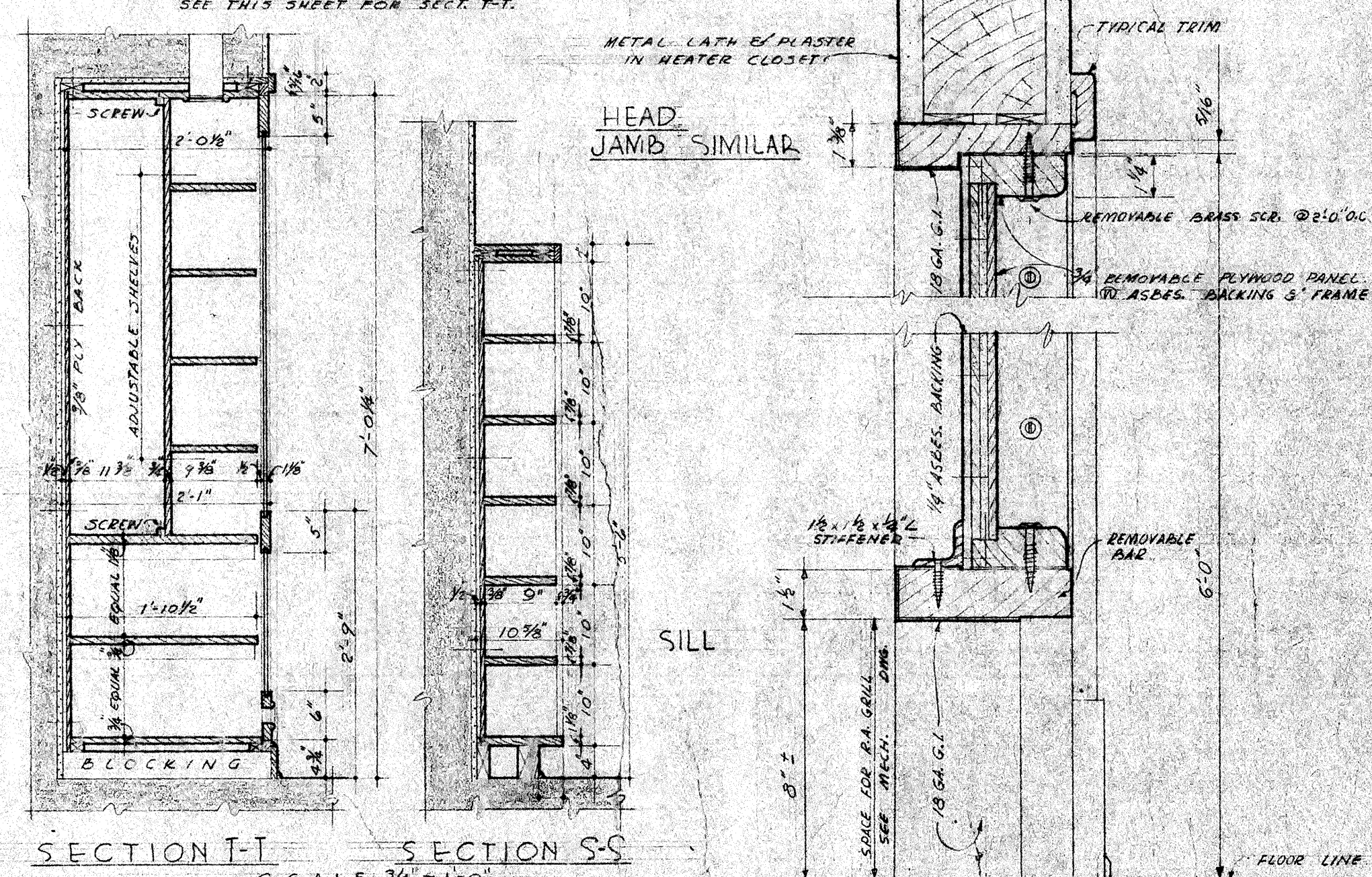
WEST ELEVATION



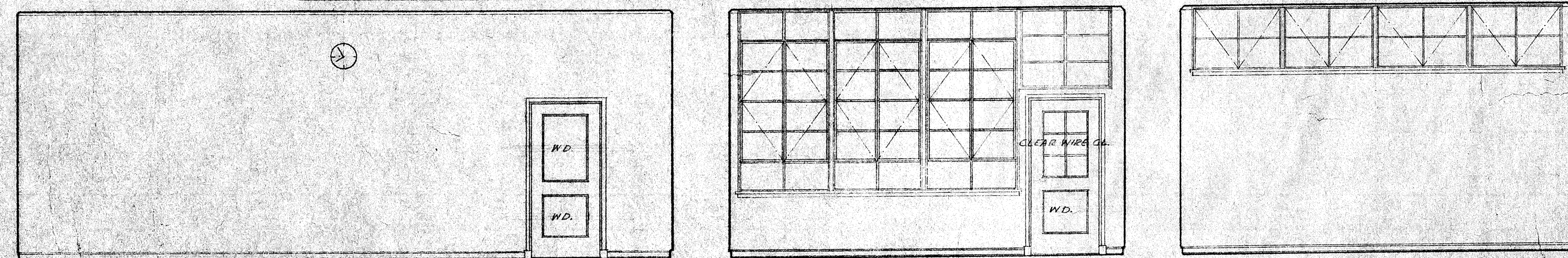
NORTH ELEVATION EAST ELEVATION SOUTH ELEVATION WEST ELEVATION
ELEVATIONS IN TEACHER'S LOUNGE (16) SCALE 1/4" = 1'-0"



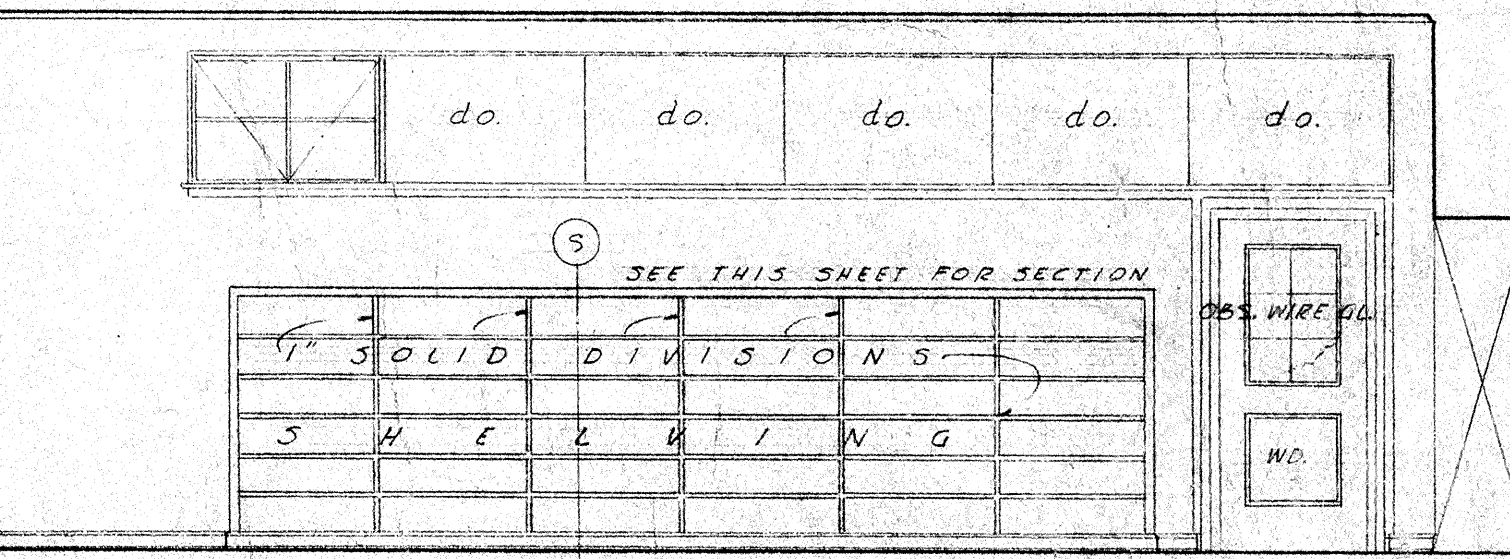
EAST ELEVATION



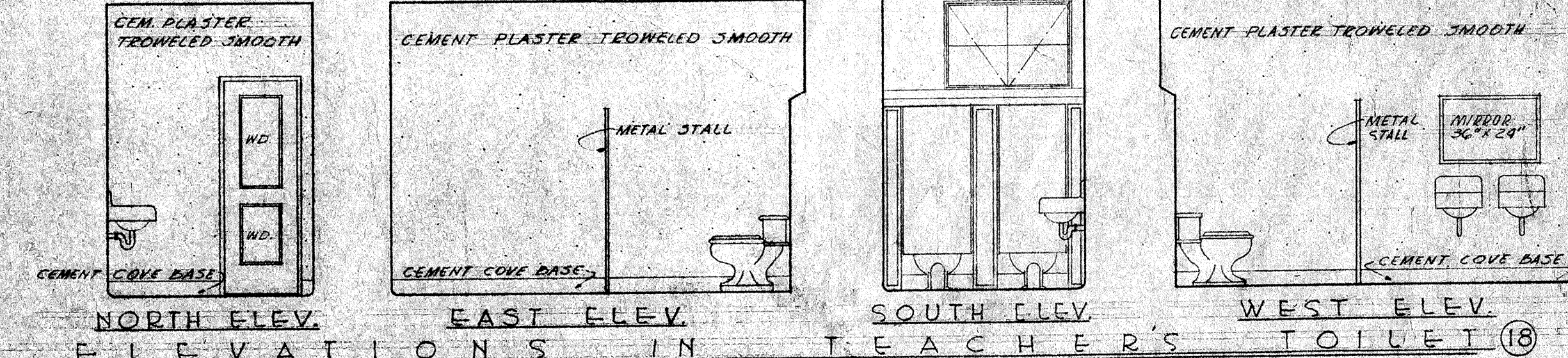
SECTION T-T SECTION S-S
SCALE 3/4" = 1'-0"



WEST ELEVATION NORTH ELEVATION SOUTH ELEVATION
ELEVATIONS IN TEACHER'S WORK-ROOM (19) SCALE 1/4" = 1'-0"



SOUTH ELEVATION



NORTH ELEV. EAST ELEV. WEST ELEV.
ELEVATIONS IN TEACHER'S TOILET (18) SCALE 1/4" = 1'-0"

ELEVATIONS IN VISUAL AID & LIBRARY (15)
SCALE 1/4" = 1'-0"

PLYWOOD PANEL DETAIL
SCALE 3" = 1'-0"

Check and verify all dimensions before proceeding with the work. Report any discrepancies to Architect.

STATE OF CALIFORNIA
DEPARTMENT OF PUBLIC WORKS
DIVISION OF ARCHITECTURE
APPROVED
5/12
Harry W. Blum
ARCHITECT

BAKERSFIELD CITY SCHOOLS
1800 ST. BAKERSFIELD CALIF.
BOARD OF EDUCATION
APPROVED
7/20 1948
PRESIDENT
SECRETARY

ELEMENTARY SCHOOL
BAKERSFIELD CITY SCHOOL DISTRICT
PIONEER DRIVE
BAKERSFIELD CALIFORNIA
ERNEST L. M. COY AIA
ARCHITECT
1512 10th ST.
BAKERSFIELD CALIFORNIA

DATE
4/16/48
DRAWN BY
C.F.L.
CHECKED BY
SHEET NO.
A10
OF 16 SHEETS