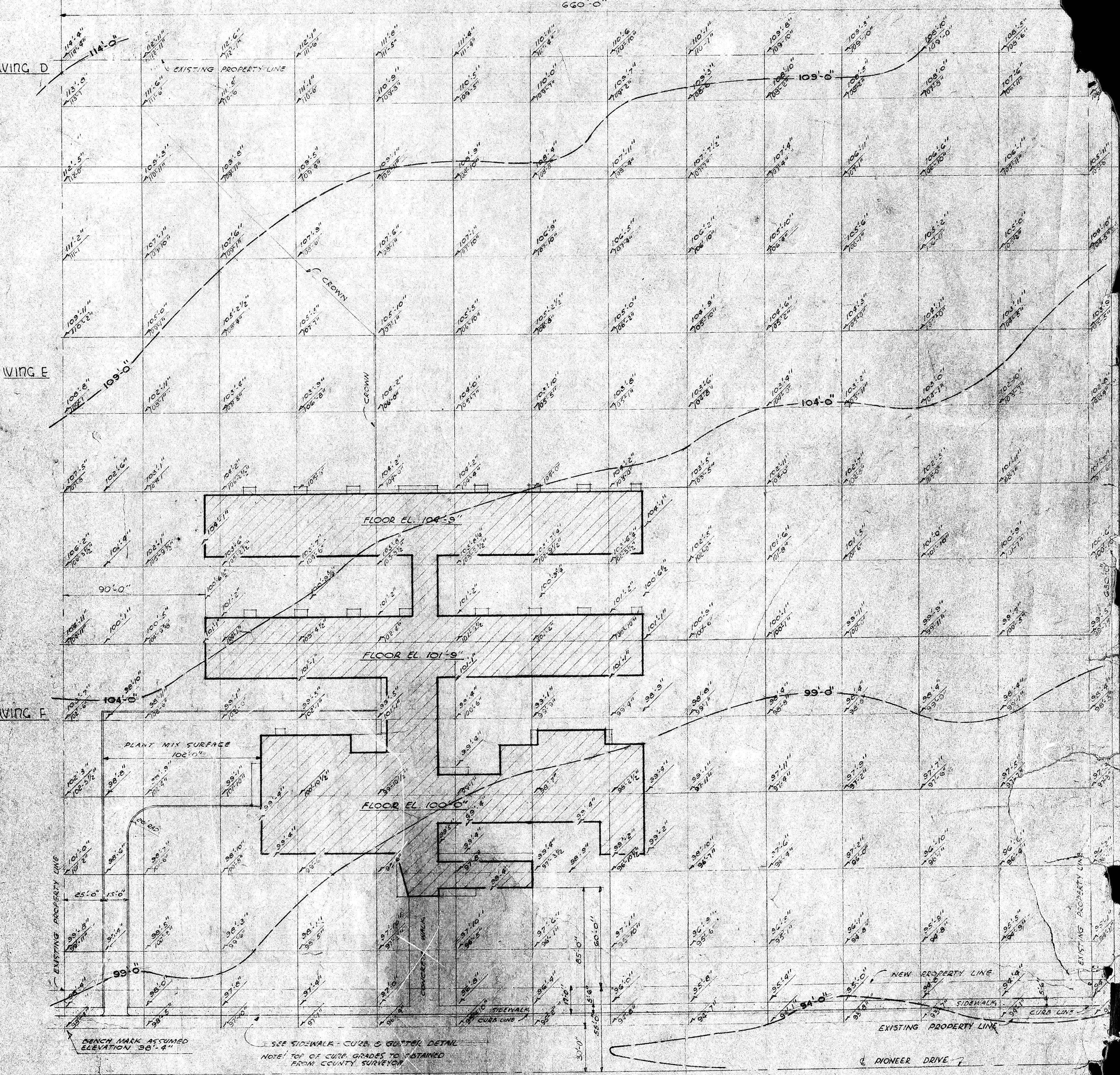
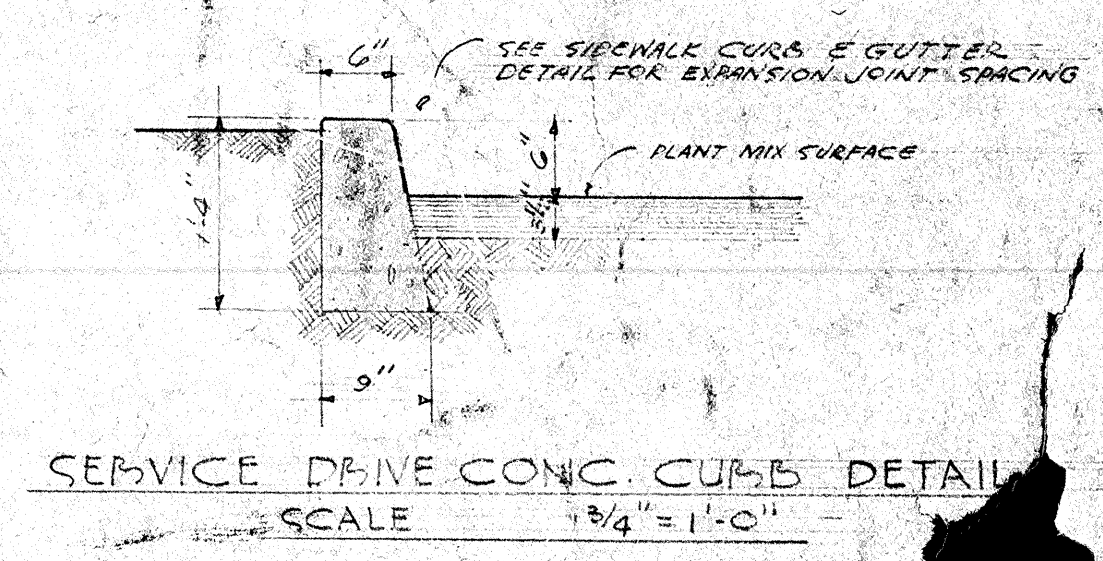


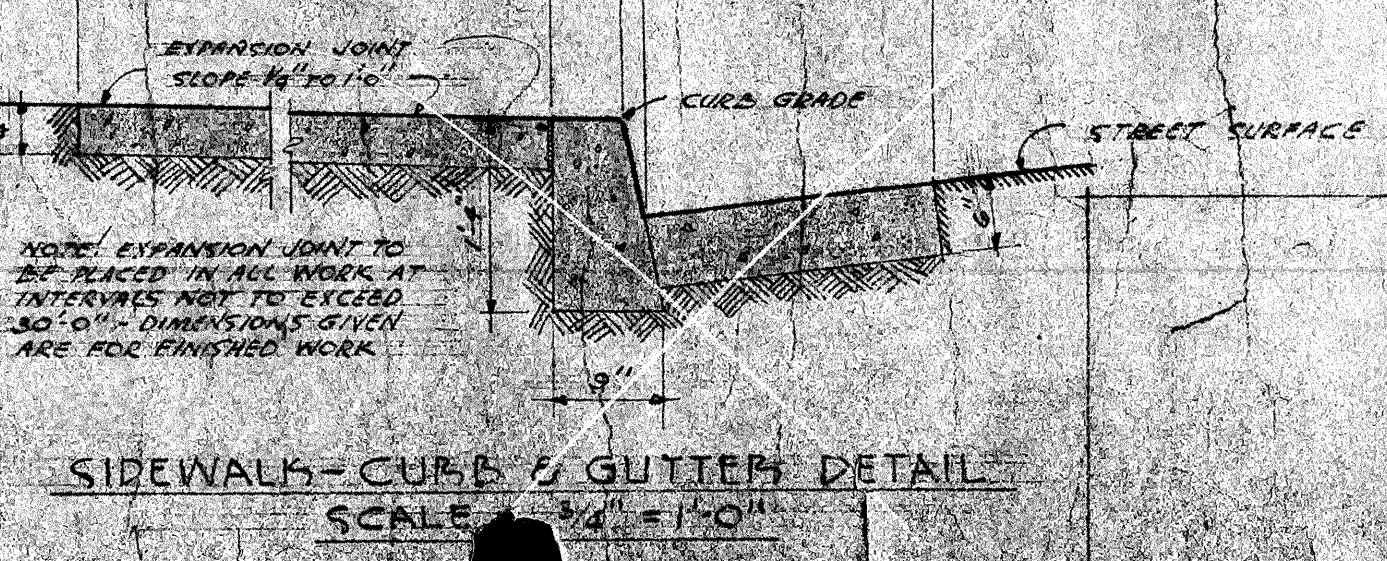
FLOOR PLAN  
SCALE 1/8" = 1'-0"



PLOT & GRADE PLAN  
SCALE 1" = 40'-0"



NOTE: EXTERIOR & INTERIOR WALL & CEILING FINISHES AS NOTED ARE FOR ALTERNATE BID ONLY. WALL FINISHES NOT NOTED ARE SAME FOR ALTERNATE BIDDING. SEE ROOM FINISH SCHEDULE SHEET #14-15. EXTERIOR FLOOR FINISHES ARE 5" CEILING FINISHES ON SECONDARY BLDG. ALL OPEN CORRIDOR CEILINGS ARE CEMENT PLASTER ON PRIMARY & ALTERNATE BIDS.



NOTE: EXPANSION JOINT TO BE PLACED IN ALL WORK AT INTERSECTIONS NOT TO EXCEED 30'-0" DIMENSIONS OTHER ARE FOR FINISHED WORK.

STATE OF CALIFORNIA  
DEPARTMENT OF PUBLIC WORKS  
BOARD OF ARCHITECTURE  
APPROVED: 7-29-48  
5743

BAKERFIELD CITY SCHOOLS  
1600 V ST. BAKERSFIELD CALIF.  
BOARD OF EDUCATION  
APPROVED: 7-29-48  
PRESIDENT: [Signature]  
SECRETARY: [Signature]

ELEMENTARY SCHOOL  
BAKERFIELD CITY SCHOOL DISTRICT  
DIXIE DRIVE  
BAKERFIELD CALIFORNIA  
ERNEST L. MOSEBACH  
ARCHITECT  
155 HAVEN DRIVE  
BAKERFIELD

Check and verify all dimensions before proceeding with the work. Report any discrepancies to Architect.