



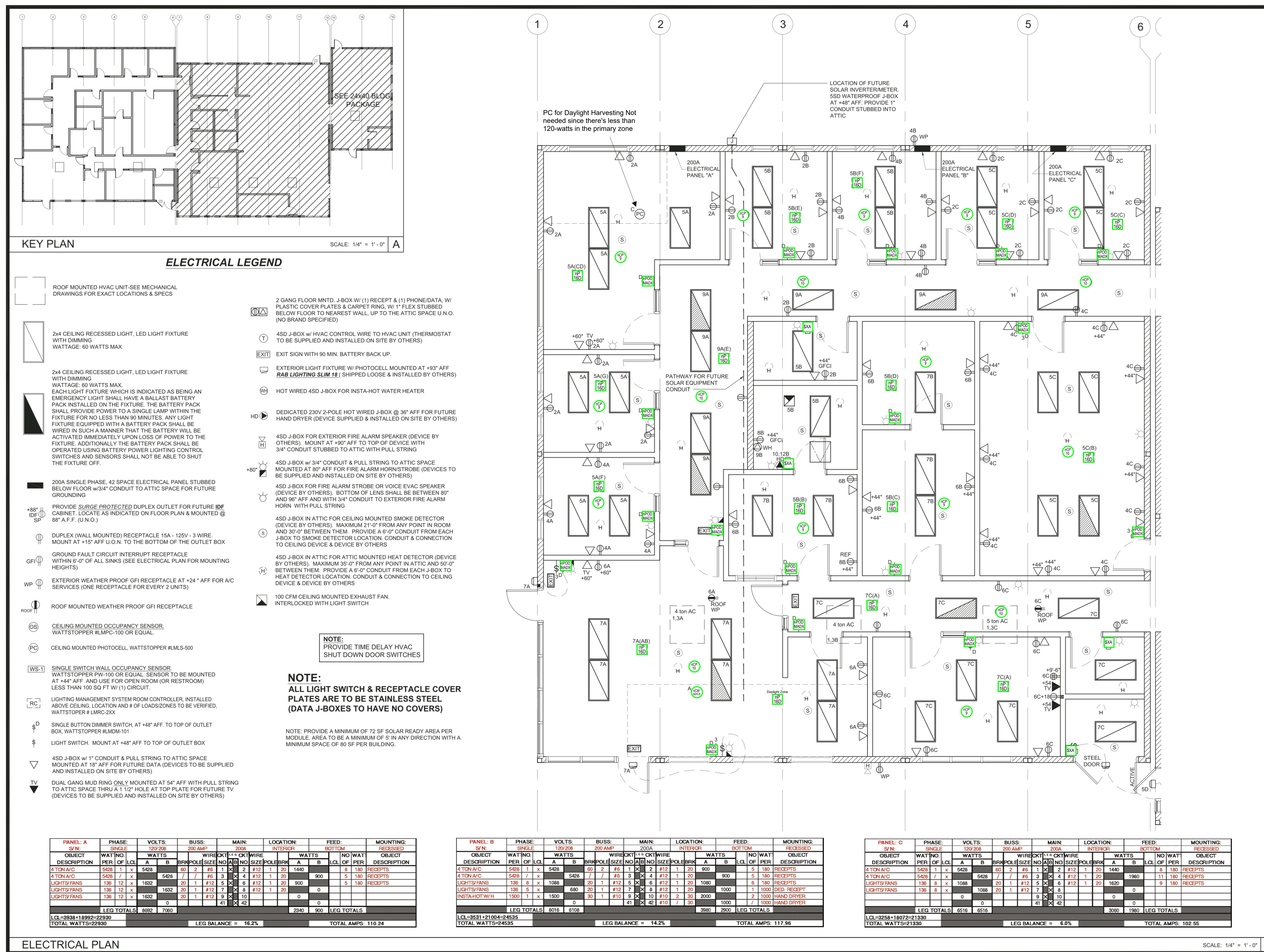


Admin Bldg Project: Lincoln Jr. High Buildings Crossover to Night	
17	 <p>D5 NPODMA DX XX night Wired Aesthetic Wallpod, Raise/Lower Dimming</p>
11	<p>OS NCM PDT 9 RJB Low Voltage Ceiling Mount Sensor, Passive Dual Technology, Small Motion / Standard Range 360° Lens, Rear RJ-45 Ports</p>
6	 <p>OS-Large Coverage NCM PDT 10 RJB Low Voltage Ceiling Mount Sensor, Passive Dual Technology, Large Motion / Extended Range 360° Lens, Rear RJ-45 Ports</p>
1	 <p>PC NCM ABOX RJB Low Voltage Ceiling Mount Sensor, Photocontrol w/ Auto Dimming: 0-10V Output Provided by Other Device(s), Rear RJ-45 Ports</p>
16	<p>RC NPP18 0 EFP Power/Relay Pack, Dimming, External Fault Protection</p>
4	 <p>WS-1 WSXA XX Wall Switch Sensor</p>



IDENTIFICATION STAMP
DIV. OF THE STATE ARCHITECT

APP. 03-120102 INC:

REVIEWED FOR

SS ☒ FLS ☒ ACS ☒

DATE: 03/27/2020



ELITE MODULAR

PROJECT NAME:

SHEET TITLE:

ELECTRICAL PLAN
60x60 ADMIN



ARCHITECT OF RECORD

PROJECT SPECIFIC STATE AGENCY APPROVAL

REVISIONS

PROJECT NO:







DRAWN BY:

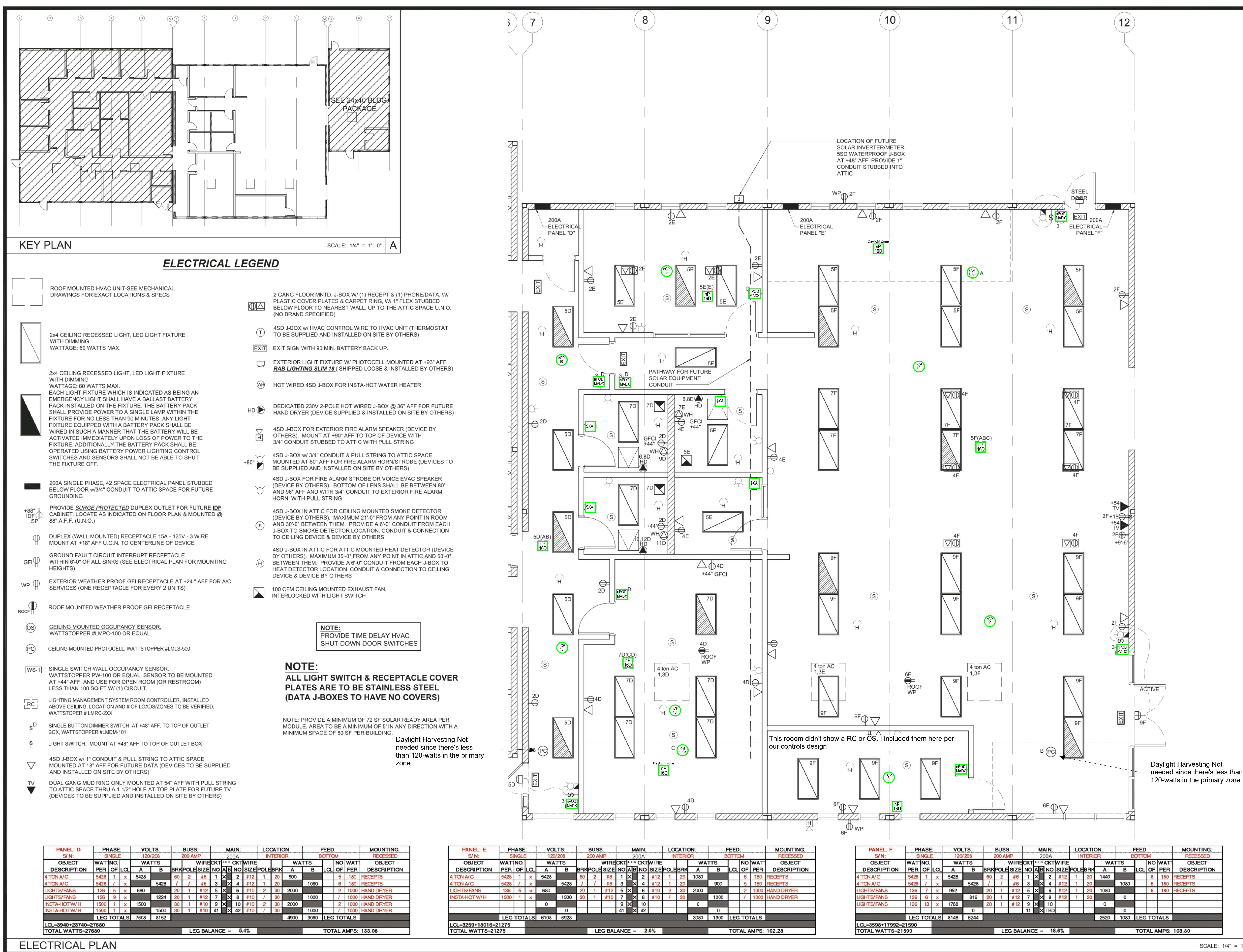
DATE:	2-20-2020
-------	-----------

SHEET NUMBER

E-1.01M

SCALE: 1/4" = 1' - 0"

Library		Project: Lincoln Jr. High Buildings Crossover to Night	
8		D5 NP0DMA DX XX nLight Wired Aesthetic Wallpod, Raised/Low Dimming	
2		OS NCM PDT 9 RJB Low Voltage Ceiling Motion Sensor, Passive Dual Technology, Small Motion / Standard Range 360° Lens, Rear RJ-45 Ports	
5		OS-Large Coverage NCM PDT 10 RJB Low Voltage Ceiling Motion Sensor, Passive Dual Technology, Large Motion / Extended Range 360° Lens, Rear RJ-45 Ports	
2		PC NCM ADCX RJB Low Voltage Ceiling Motion Sensor, Photocoupler w/ Auto Dimming, 0-10V Output Provided by Other Device(s), Rear RJ-45 Ports	
		RC NPF16 EFP Power/Relay Pack, Dimming, External Fault Protection	
4		WS-1 WSXA XX Wall Switch Sensor	



IDENTIFICATION STAMP
 DIV. OF THE STATE ARCHITECT
 APP. 03-120102 INC:
 REVIEWED FOR
 SS ☒ FLS ☒ ACS ☒
 DATE: 03/27/2020



PROJECT NAME

SHEET TITLE:

ELECTRICAL PLAN
60x60 LIBRARY



ARCHITECT OF RECORD

PROJECT SPECIFIC STATE AGENCY APPROVAL

REVISIONS	
1	
2	
3	
4	
5	
6	
7	
8	

PROJECT NO:

DRAWN BY:






SCALE: AS NOTED

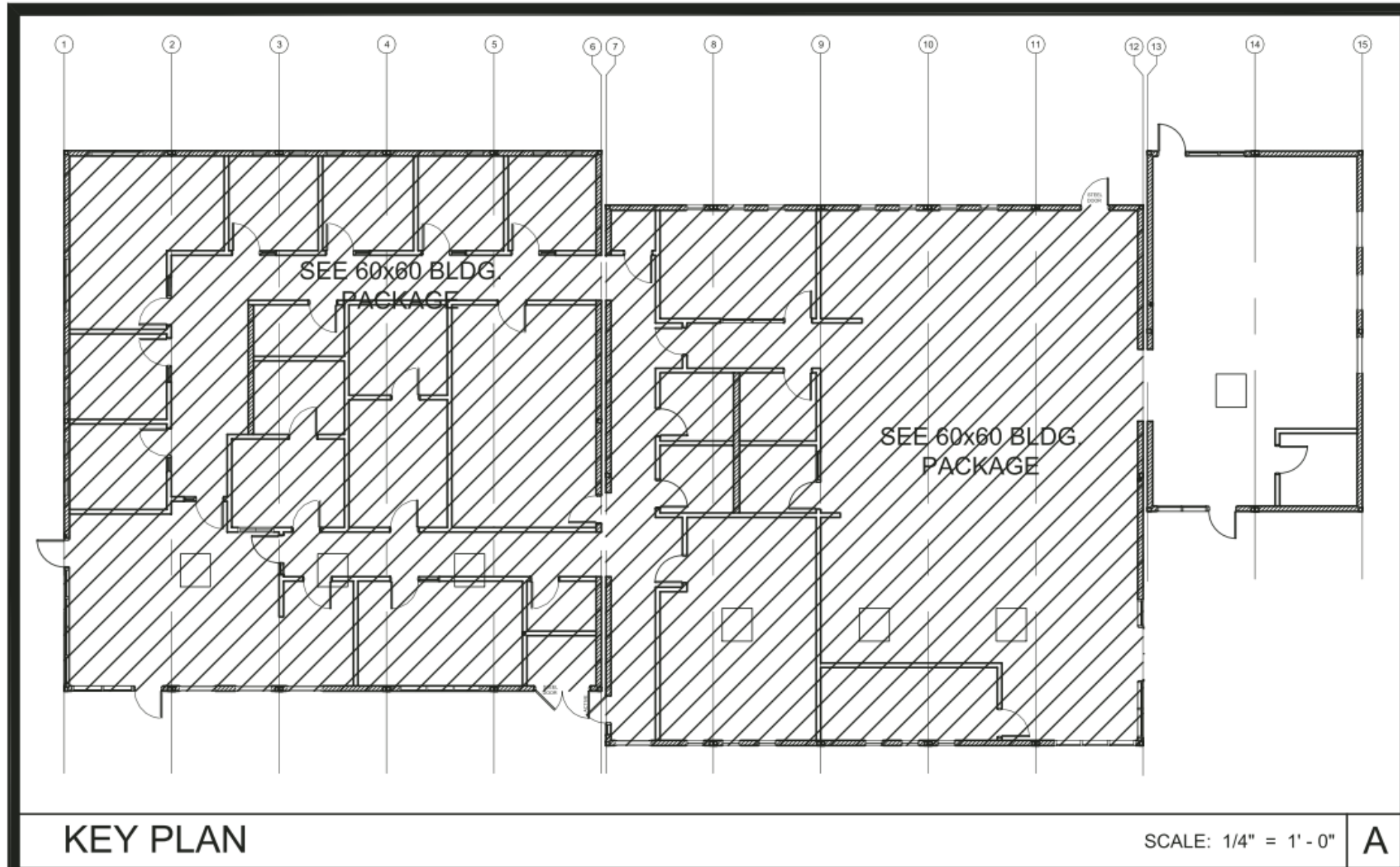
SCALE:	AS NOTED
DATE:	0 00 0000

DATE: 2-20-2020

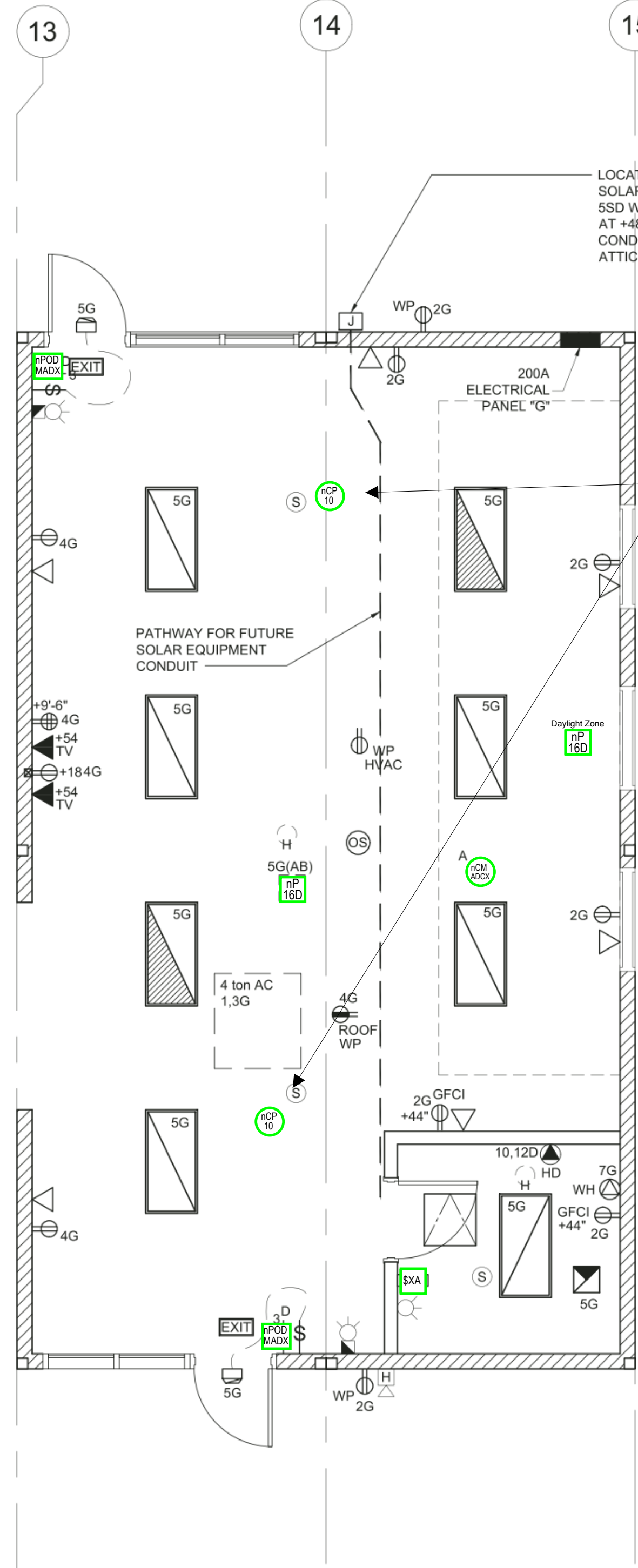
E-1.02N

SCALE: 1/4" = 1' - 0" | 1

Parent Center Project: Lincoln Jr. High Buildings Crossover to Nlight		
2		D\$ NPODMA DX XX nLight Wired Aesthetic Wallpod, Raise/Lower Dimming
2		OS-Large Coverage NCM PDT 10 RJ-B Low Voltage Ceiling Mount Sensor, Passive Dual Technology, Large Motion / Extended Range 360° Lens, Rear RJ-45 Ports
1		PC NCM ADCX RJ-B Low Voltage Ceiling Mount Sensor, Photocontrol w/ Auto Dimming; 0-10V Output Provided by Other Device(s), Rear RJ-45 Ports
2		RC NPP16 D EFP Power/Relay Pack, Dimming, External Fault Protection
1		WS-1 WSXA XX Wall Switch Sensor



PANEL: 0	PHASE:	VOLTS:	BUSSE:	MAIN:	LOCATION:	FEED:	MOUNTING:
5/1N	SINGLE	120/208	200 AMP	200A	INTERIOR	BOTTOM	RECESSED
OBJECT	WATTING	WATTS	WIRE	WIRE	WIRE	WATT	OBJECT
DESCRIPTION	PERI OF LQ	A	B	NO	NO	NO	DESCRIPTION
4 TON A/C	5428	1	2	5428	1	2	120
4 TON A/C	5428	1	2	5428	1	2	120
LIGHTS	195	10	1	195	10	1	100
INSTA-HOT WH	1500	1	2	1500	1	2	1000
LEG TOTALS	0	0	0	0	0	0	0
LQ=5428+1905=7333	5768	6928	3200	2080	LEG TOTALS	108.10	
TOTAL WATTS=22485	LEG BALANCE = 5.5%		TOTAL AMPS = 108.10				



NOTE:
PROVIDE TIME DELAY HVAC
SHUT DOWN DOOR SWITCHES

NOTE:
ALL LIGHT SWITCH & RECEPTACLE COVER
PLATES ARE TO BE STAINLESS STEEL
(DATA J-BOXES TO HAVE NO COVERS)

NOTE: PROVIDE A MINIMUM OF 72 SF SOLAR READY AREA PER
MODULE AREA TO BE A MINIMUM OF 3' IN ANY DIRECTION WITH A
MINIMUM SPACE OF 80 SF PER BUILDING

ELECTRICAL LEGEND

- ROOF MOUNTED HVAC UNIT-SEE MECHANICAL
DRAWINGS FOR EXACT LOCATIONS & SPECS
- 2x4 CEILING RECESSED LIGHT, LED LIGHT FIXTURE
WITH DIMMING
WATTAGE: 60 WATTS MAX.
- 2x4 CEILING RECESSED LIGHT, LED LIGHT FIXTURE
WITH DIMMING
WATTAGE: 60 WATTS MAX.
EACH LIGHT FIXTURE WHICH IS INDICATED AS BEING AN
EMERGENCY LIGHT SHALL HAVE A BALLAST BATTERY
PACK INSTALLED ON THE FIXTURE. THE BATTERY PACK
SHALL PROVIDE POWER TO A SINGLE LAMP WITHIN THE
FIXTURE FOR NO LESS THAN 90 MINUTES. ANY LIGHT
FIXTURE EQUIPPED WITH A BATTERY PACK SHALL BE
WIRED IN SUCH A MANNER THAT THE BATTERY WILL BE
ACTIVATED IMMEDIATELY UPON LOSS OF POWER TO THE
FIXTURE. ADDITIONALLY THE BATTERY PACK SHALL BE
OPERATED USING BATTERY POWER LIGHTING CONTROL
SWITCHES AND SENSORS SHALL NOT BE ABLE TO SHUT
THE FIXTURE OFF.
- 200A SINGLE PHASE, 42 SPACE ELECTRICAL PANEL STUBBED
BELOW FLOOR w/3/4" CONDUIT TO ATTIC SPACE FOR FUTURE
GROUNDING
- PROVIDE SURGE PROTECTED DUPLEX OUTLET FOR FUTURE
CABINET. LOCATE AS INDICATED ON FLOOR PLAN & MOUNTED @
88" A.F.F. (U.N.O.)
- DUPLEX (WALL MOUNTED) RECEPTACLE 15A - 125V - 3 WIRE.
MOUNT AT +18" AFF U.O.N. TO CENTERLINE OF DEVICE
- GROUND FAULT CIRCUIT INTERRUPT RECEPTACLE
WITHIN 6'-0" OF ALL SINKS (SEE ELECTRICAL PLAN FOR MOUNTING
HEIGHTS)
- EXTERIOR WEATHER PROOF GFI RECEPTACLE AT +24" AFF FOR A/C
SERVICES (ONE RECEPTACLE FOR EVERY 2 UNITS)
- ROOF MOUNTED WEATHER PROOF GFI RECEPTACLE
- CEILING MOUNTED OCCUPANCY SENSOR
WATTSTOPPER #LMPC-100 OR EQUAL
- CEILING MOUNTED PHOTOCELL, WATTSTOPPER #LMCS-500
- SINGLE SWITCH WALL OCCUPANCY SENSOR
WATTSTOPPER PW-100 OR EQUAL. SENSOR TO BE MOUNTED
AT +44" AFF AND USE FOR OPEN ROOM (OR RESTROOM)
LESS THAN 100 SQ FT W/ (1) CIRCUIT.
- LIGHTING MANAGEMENT SYSTEM ROOM CONTROLLER, INSTALLED
ABOVE CEILING LOCATION AND # OF LOADS ZONES TO BE VERIFIED,
WATTSTOPPER #LMRC-20X
- SINGLE BUTTON DIMMER SWITCH AT +48" AFF. TO TOP OF OUTLET
BOX, WATTSTOPPER #LMDM-101
- LIGHT SWITCH. MOUNT AT +48" AFF TO TOP OF OUTLET BOX
- 4SD J-BOX w/ 1" CONDUIT & PULL STRING TO ATTIC SPACE
MOUNTED AT 18" AFF FOR FUTURE DATA (DEVICES TO BE SUPPLIED
AND INSTALLED ON SITE BY OTHERS)
- DUAL GANG MUD RING ONLY MOUNTED AT 54" AFF WITH PULL STRING
TO ATTIC SPACE THRU A 1-1/2" HOLE AT TOP PLATE FOR FUTURE TV
(DEVICES TO BE SUPPLIED AND INSTALLED ON SITE BY OTHERS)
- 2 GANG FLOOR MNTD. J-BOX W/ (1) RECEPT & (1) PHONE/DATA, W/
PLASTIC COVER PLATES & CARPET RING, W/ 1" FLEX STUBBED
BELOW FLOOR TO NEAREST WALL, UP TO THE ATTIC SPACE U.N.O.
(NO BRAND SPECIFIED)
- 4SD J-BOX w/ HVAC CONTROL WIRE TO HVAC UNIT (THERMOSTAT
TO BE SUPPLIED AND INSTALLED ON SITE BY OTHERS)
- EXIT SIGN WITH 90 MIN. BATTERY BACK UP.
- EXTERIOR LIGHT FIXTURE W/ PHOTOCELL MOUNTED AT +93" AFF
RAB LIGHTING SLIM 18 (SHIPPED LOOSE & INSTALLED BY OTHERS)
- HOT WIRED 4SD J-BOX FOR INSTA-HOT WATER HEATER
- DEDICATED 230V 2-POLE HOT WIRED J-BOX @ 36" AFF FOR FUTURE
HAND DRYER (DEVICE SUPPLIED & INSTALLED ON SITE BY OTHERS)
- 4SD J-BOX FOR EXTERIOR FIRE ALARM SPEAKER (DEVICE BY
OTHERS). MOUNT AT +90" AFF TO TOP OF DEVICE WITH
3/4" CONDUIT STUBBED TO ATTIC WITH PULL STRING
- 4SD J-BOX w/ 3/4" CONDUIT & PULL STRING TO ATTIC SPACE
MOUNTED AT 80" AFF FOR FIRE ALARM HORN/STROBE (DEVICES TO
BE SUPPLIED AND INSTALLED ON SITE BY OTHERS)
- 4SD J-BOX FOR FIRE ALARM STROBE OR VOICE EVAC SPEAKER
(DEVICE BY OTHERS). BOTTOM OF LENS SHALL BE BETWEEN 80"
AND 86" AFF AND WITH 3/4" CONDUIT TO EXTERIOR FIRE ALARM
HORN WITH PULL STRING
- 4SD J-BOX IN ATTIC FOR CEILING MOUNTED SMOKE DETECTOR
(DEVICE BY OTHERS). MAXIMUM 21'-0" FROM ANY POINT IN ROOM
AND 30'-0" BETWEEN THEM. PROVIDE A 6'-0" CONDUIT FROM EACH
J-BOX TO SMOKE DETECTOR LOCATION. CONDUIT & CONNECTION
TO CEILING DEVICE & DEVICE BY OTHERS.
- 4SD J-BOX IN ATTIC FOR ATTIC MOUNTED HEAT DETECTOR (DEVICE
BY OTHERS). MAXIMUM 35'-0" FROM ANY POINT IN ATTIC AND 50'-0"
BETWEEN THEM. PROVIDE A 6'-0" CONDUIT FROM EACH J-BOX TO
HEAT DETECTOR LOCATION. CONDUIT & CONNECTION TO CEILING
DEVICE & DEVICE BY OTHERS
- 100 CFM CEILING MOUNTED EXHAUST FAN.
INTERLOCKED WITH LIGHT SWITCH

IDENTIFICATION STAMP
DIV. OF THE STATE ARCHITECT
APP. 03-120102 INC.
REVIEWED FOR:
SS ☐ FLS ☐ ACS ☐
DATE: 03/27/2020



PROJECT NAME:

SHEET TITLE:

ELECTRICAL PLAN 24x40 PARENT CTR.



ARCHITECT OF RECORD

PROJECT SPECIFIC STATE AGENCY APPROVAL

REVISIONS

1	
2	
3	
4	
5	
6	
7	
8	
9	
10	

PROJECT NO:
DRAWN BY:
SCALE: AS NOTED
DATE: 8-28-2019
SHEET NUMBER

E-1.03N

SCALE: 1/4" = 1'-0"

ELECTRICAL PLAN

Parent Center
1/4" = 1'

Lincoln Jr. High Buildings Crossover to Nlight
Bakersfield, CA

Drawing Type:
Layout
Prepared For:
BCSD

Date: 11/9/2022
Scale: 1/4" = 1'
Drawn By: D.J.
Project #:
DWG Ref:
Sheet:
Parent Center