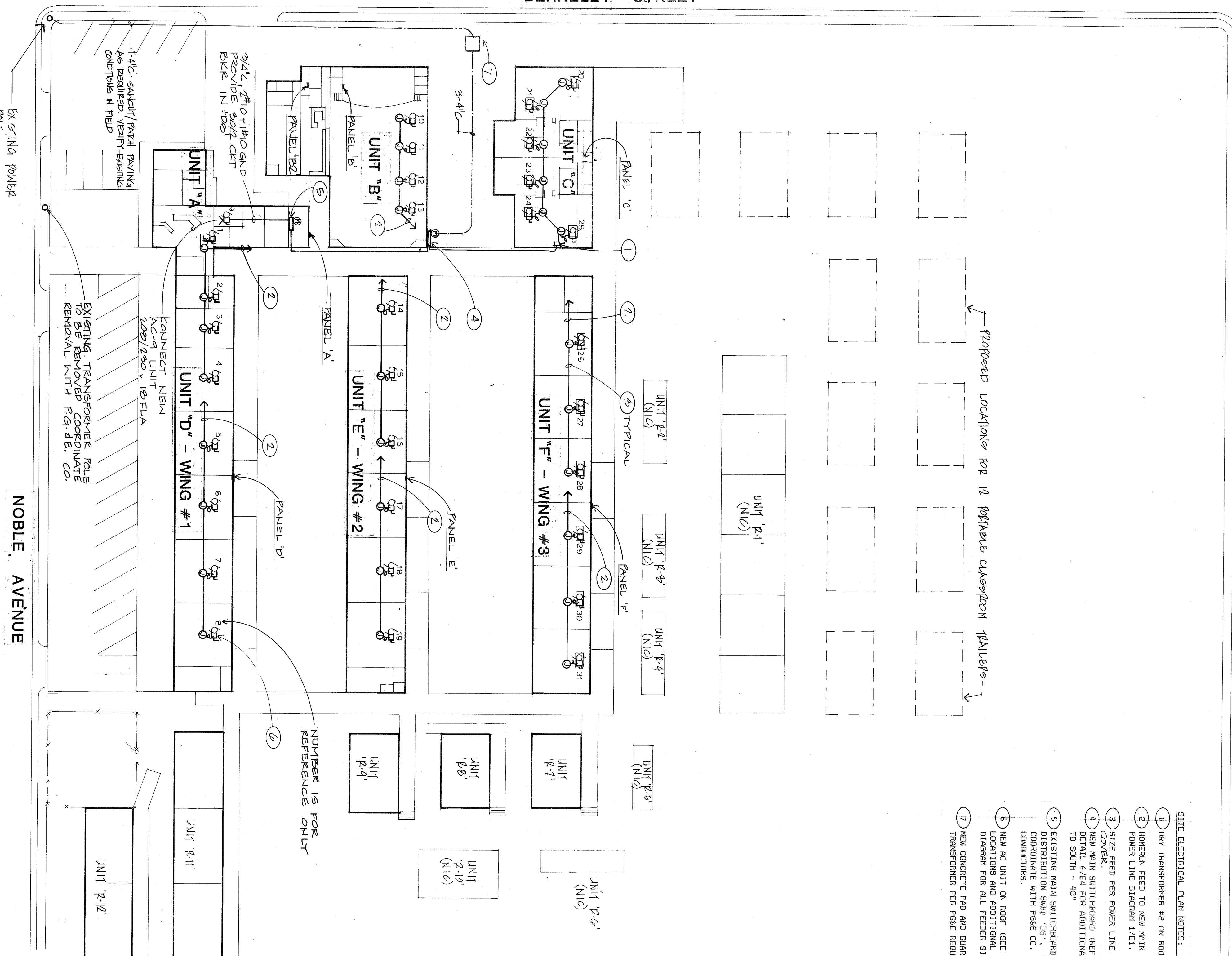


COLUMBUS STREET

BERKELEY STREET



SITE ELECTRICAL PLAN
 NOTE: COORDINATE WITH FIG. 4E, CO. AND SCHOOL DISTRICT FOR LOCATION OF POWER TO SCHOOL FOR FIELD SERVICE.
 MORE THAN 30 DAYS PRIOR TO WORK.

SCALE = 1"=30'

- SITE ELECTRICAL PLAN NOTES:**
- 1) NEW TRANSFORMER TO BE ON ROOF PER DETAIL 11/4/14.
 - 2) MERRILL FEED TO NEW MAIN SWITCHBOARD. SIZE FEEDER PER PANEL LINE DIAGRAM I/2/C. RUN ON WALKWAY COVER.
 - 3) SIZE FEED PER POWER LINE DIAGRAM I/2/C. RUN ON WALKWAY COVER.
 - 4) EXISTING SWITCHBOARDS (REFER TO POWER ONE LINE DIAGRAM AND DETAIL 1/2/C FOR ADDITIONAL INFO) SIZE OUT 3" x 4" C/W FEED TO SOUTH - 48"
 - 5) EXISTING MAIN SWITCHBOARD TO BE REWIRED WITH NEW DISTRIBUTION SMD. 75% RECONNECT PER ONE LINE DIAGRAM. LOCATIONS AND ADDITIONAL INFO. REFER TO POWER ONE LINE DIAGRAM WITH PANEL CO. FOR DETAILS OF REWIRING AND SERVICE CONNECTIONS.
 - 6) NEW AC UNIT ON ROOF. USE RECONNECT DRAWING FOR EXACT LOCATIONS AND ADDITIONAL INFO. REFER TO POWER ONE LINE DIAGRAM FOR ALL FEEDER SIZES TO AC UNITS.
 - 7) NEW CONCRETE PAD AND GROUND PITS FOR PANE PAD MOUNTED TRANSFORMER PER FIELD REQUIREMENTS.

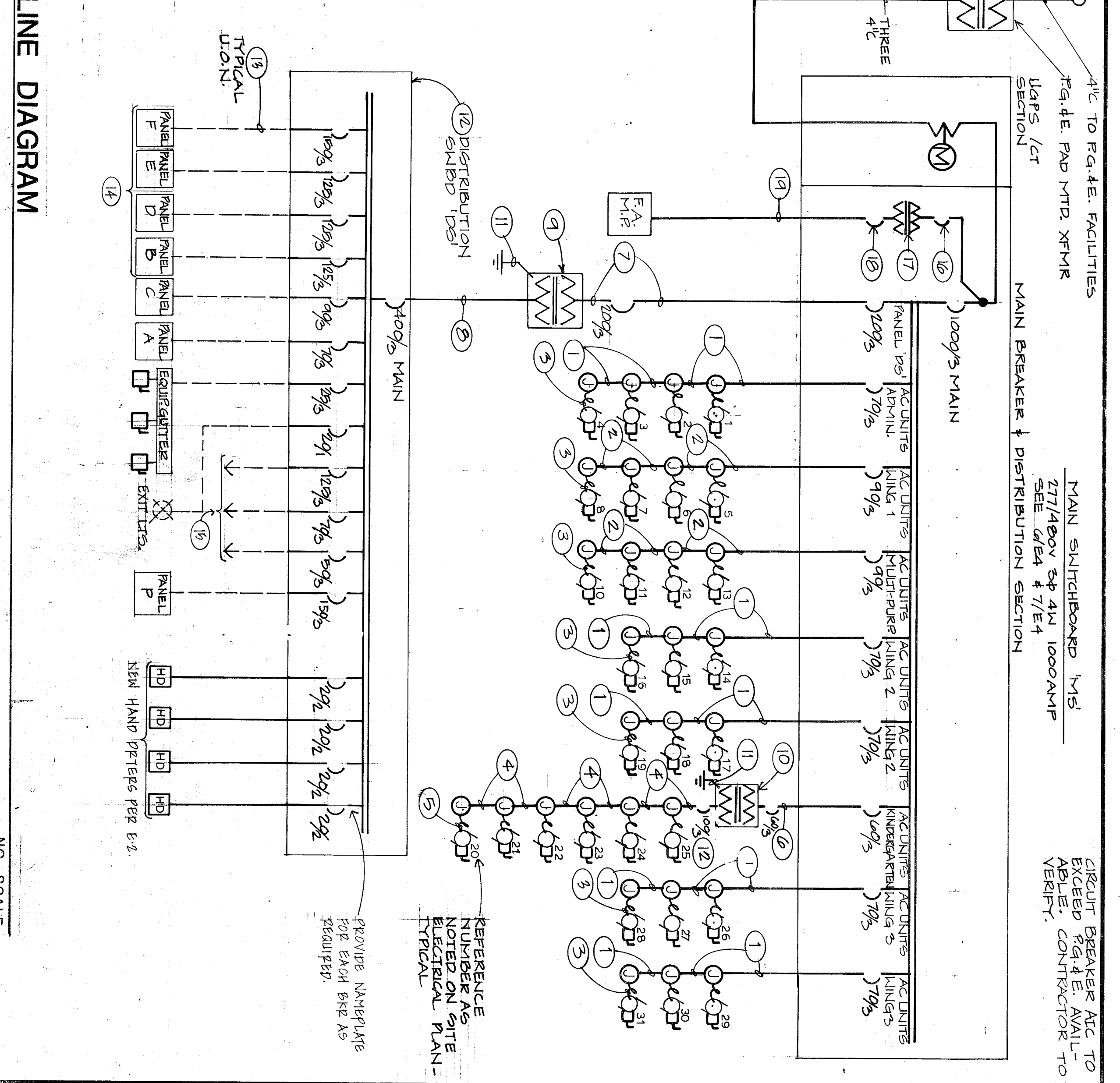
CODE, RULES AND REGULATIONS COMPLY WITH THE LATEST REGULATIONS OF THE STATE FIRE MARSHAL. ALL FIRE PROTECTIVE DEVICES SHALL BE INSTALLED IN ACCORDANCE WITH THE LATEST REGULATIONS OF THE STATE FIRE MARSHAL. ALL ELECTRICAL WORK SHALL BE IN ACCORDANCE WITH THE LATEST REGULATIONS OF THE STATE FIRE MARSHAL. ALL ELECTRICAL WORK SHALL BE IN ACCORDANCE WITH THE LATEST REGULATIONS OF THE STATE FIRE MARSHAL.

UTILITY CO. REQUIREMENTS
 COMPARE TO VERIFY LOCATION OF UTILITY CO. SERVICE CONNECTION POINTS AND THE EXISTING UTILITIES. VERIFY LOCATION AND SIZE OF ALL EXISTING UTILITIES. VERIFY LOCATION AND SIZE OF ALL EXISTING UTILITIES. VERIFY LOCATION AND SIZE OF ALL EXISTING UTILITIES.

SCHOOL FIRE ALARM REQUIREMENTS
 THE FIRE ALARM SYSTEM SHALL COMPLY WITH SECTION 7-2.02, PART 2.02 OF THE CALIFORNIA FIRE ALARM SYSTEM CODE. THE FIRE ALARM SYSTEM SHALL COMPLY WITH SECTION 7-2.02, PART 2.02 OF THE CALIFORNIA FIRE ALARM SYSTEM CODE. THE FIRE ALARM SYSTEM SHALL COMPLY WITH SECTION 7-2.02, PART 2.02 OF THE CALIFORNIA FIRE ALARM SYSTEM CODE.

- EXISTING ONE LINE DIAGRAM NOTES:**
- 1) 1" C - 3 #6 - 1 #0 GND (TRIM-CU)
 - 2) 1 1/4" C - 3 #4 - 1 #0 GND (TRIM-CU)
 - 3) 3/4" C - 3 #12 - 1 #0 GND (TRIM-CU) THE ONE OF MAIN FEEDER TO AC UNIT. TYPICAL. 50%.
 - 4) 1 1/4" C - 3 #4 - 1 #0 GND (TRIM-CU)
 - 5) 3/4" C - 3 #10 - 1 #0 GND (TRIM-CU). 1 PHASE TWO OF 3 PHASE MAIN FEEDER. CONNECT TO PHASE AS REVISED TO BRIDGE BALANCE LOAD AMONG 3 PHASES. TYPICAL.
 - 6) 1 1/4" C - 3 #4 CU
 - 7) 2" C - 3 #6/0 CU
 - 8) TWO 2 1/2" C - 4 #2/0 - 1 #2 GND EACH GRABBLE. 100%.
 - 9) NEW TRANSFORMER #1 - 150 KVA. 480V/208V 3# 4# WITH PRIMARY REWIND TO 480V. 480V/208V 3# 4# WITH PRIMARY AND SECONDARY BREAKERS. SEE DETAIL 10/2/C.
 - 10) NEW TRANSFORMER #2 - 30 KVA. 480V/208V 3# 4# WITH PRIMARY AND SECONDARY BREAKERS. SEE DETAIL 10/2/C.
 - 11) GROUNDING BUS TRANSFORMER PER DETAIL 9/2/C.
 - 12) NEW DISTRIBUTION SWITCHBOARD USE TO THIS PLANT OF SERVICES AND PULL OUT ANY OLD CIRCUITS. CAP OFF OLD CIRCUITS. RECONNECT TO NEW FEEDER AS SHOWN.
 - 13) PROVIDE MAINLY GROUND AND BOND EXISTING MAIN SMD. 75% AS REVISED AND RECONNECT TO NEW BREAKERS AS SHOWN. 75%.
 - 14) EXISTING MAIN SMD HAS BEEN INCREASED IN SIZE.
 - 15) VERIFY & CONNECT TO EXISTING EQUIPMENT.
 - 16) 15/2P BREAKER. LOCATE IN 1/4" HAND OF MAIN. PROVIDE OF MAIN. DO NOT TURN OFF.
 - 17) 500VA CONTROL TRANSFORMER IN WS. 480V/120V 1#.
 - 18) 200VA BEARING ON SECONDARY SIDE OF CONTROL TRANSFORMER. LOCATE IN 1/4" HAND OF MAIN. PROVIDE OF MAIN. DO NOT TURN OFF.
 - 19) 1/2" C - 2 #12 - 1 #2 GND TO NEW FIRE ALARM MAIN PANEL.

POWER ONE LINE DIAGRAM



ELECTRICAL SYMBOLS
 ALL DIMENSIONS TO CENTER OF BOX, U.O.N.

④	HOME RUN 3/4" C - MIN. (PANEL A, CIRCUIT #3)	
①	CONDUIT RUN IN WALL OR C/O (1/2" C - 2 #12 AND TW #1 #12 GND)	
①	ANY CONDUIT RUN 1/2" C - 3 #12 AND TW #1 #12 GND	
①	3/4" C - 4 #12	
①	3/4" C - 5 #12	
①	3/4" C - 6 #12	
①	TERMINAL CABINET SIZE AS SHOWN	
①	DISTRIBUTION SUB PANEL	
①	TELEPHONE OUTLET IN WALL (+12" U.O.N.)	
①	IN FLOOR	
①	DUPLEX RECEPTACLE IN WALL (+12" U.O.N.)	
①	IN FLOOR	
①	QUADPLEX IN WALL (+12" U.O.N.)	
①	SPECIAL OUTLET AS NOTED ON DRAWINGS (+12" U.O.N.)	
①	JUNCTION BOX W/FEED CONNECTION	
①	CEILING MOUNTED FLETHER	
①	WALL	
①	RECESSED	
①	IN CEILING	
①	FLOURESCENT SURFACE MOUNT	
①	EXIT LIGHT - WITH EMERG. BATTERY BACK STANDBY	
①	EMERGENCY LIGHT	
①	LIGHT SWITCH	
①	THREE WAY (4" - 0" U.O.N.)	
①	KEY OPERATED (" ")	
①	BY-PASS THERM	
①	THE SWITCH (LIGHTING) FLUSH W/D (U.O.N.)	
①	THE CLOCK CONTROLLER (HVA)	
①	W/ MOTOR	
①	PHASE DISCONNECT SWITCH BY ELCC COMP. (U.O.N.)	
①	EXHAUST FAN	
①	CLOCK 6" - 0" U.O.N. W/BUZZER	
①	EXTERIOR P.A. SPEAKER - TAMPERPROOF + 6" - 0" U.O.N.	
①	INTERCOM HANDBELT + 48"	
①	FIRE ALARM BELL STATION + 48"	
①	F.A. Horn WITH DUAL PROTECTORS + 81" - 0" U.O.N.	
①	6 POSITION SOLID COOLER SWITCH + 48"	
①	W/ DENOTES "TEMPERATURE"	
①	W/ DENOTES "TEMPERATURE"	
①	MOTION SENSOR	
①	MOTION SENSOR SWITCHBACK	
①	ELECTRICAL WORK. REFER TO ELECTRICAL NOTES LEGEND	
①	① DENOTES "EXISTING"	
①	② DENOTES "EXISTING TO BE REMOVED"	
①	③ DENOTES "UNLESS OTHERWISE NOTED"	
①	④ LEADERSHIP REFERENCE ON ELEV	
①	⑤ ELECTRIC HAND DRIVER	

ROBERT F. STUHR ARCHITECT INC.
 3121 CALIFORNIA AVE.
 BAKERSFIELD, CALIF. 93304
 (805) 327-1632

ROBERT F. STUHR, AIA
 WILLIAM J. HERTY, AIA
 DANNY E. ORUZ, AIA

CONRULUS ENGINEERING, INC.
 Consulting Electrical Engineer
 714 W. Main St., Suite 201
 Bakersfield, California 93301

SITE ELECTRICAL PLAN / SYMBOLS / NOTES
MYRA A. NOBLE SCHOOL
 1015 NOBLE AVENUE
MODERNIZATION
 BAKERSFIELD CITY SCHOOL DISTRICT
 KERN COUNTY, CALIFORNIA

MARK DATE REVISIONS

JOB NO. 643
DATE 8-24-09