

- SHEET NOTES -

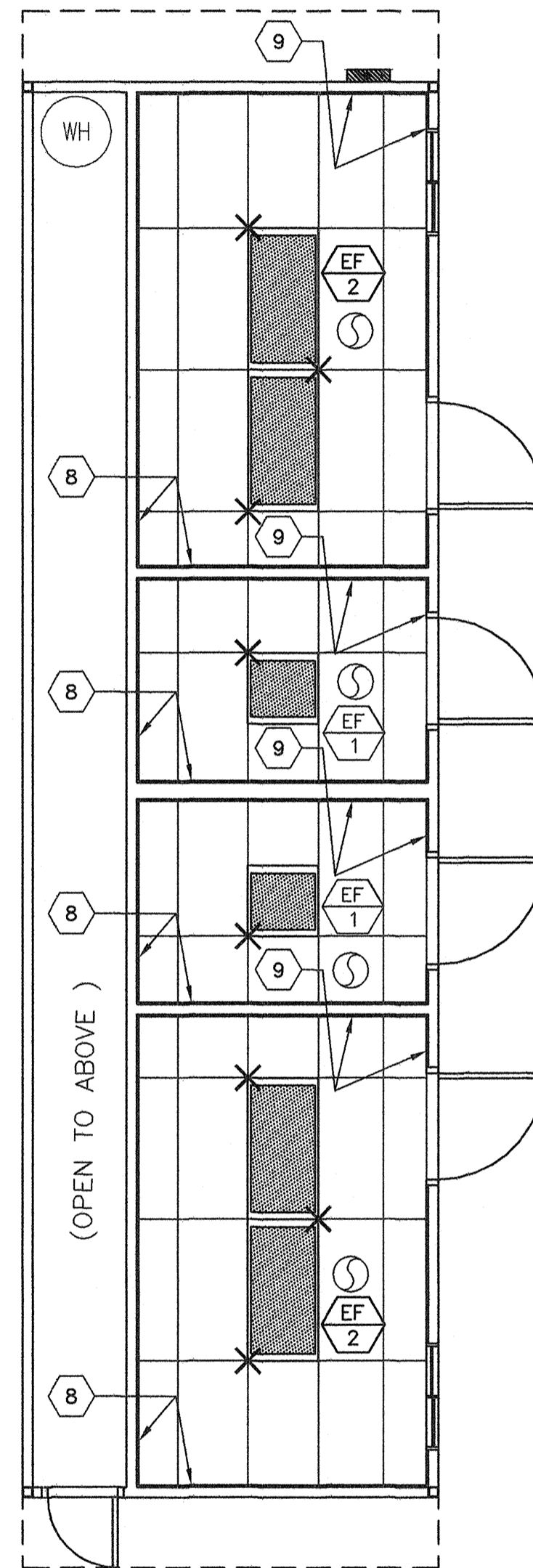
- 1 WALL HUNG HVAC UNIT
- 2 THERMOSTAT @ +60" SEALED
- 3 MAIN RUNNER TYP
- 4 CROSS RUNNER TYP
- 5 INTERIOR LIGHT FIXTURE REFER TO SHEET E1 FOR SPEC'S
- 6 CEILING HEIGHT @ 8'-6" NOM
- 7 SPLAY WIRE SEE 4/M2 FOR DETAILS
- 8 FIXED CEILING END
- 9 FREE CEILING END
- 10 CENTER SECTION THAT CROSSES MODULE LINE TO BE FIELD INSTALLED
- 11 NOT USED
- 12 CONCEALED SUPPLY AIR DUCT ABOVE T-BAR CEILING
- 13 TYPICAL 4-WAY SUPPLY AIR REGISTER LOCATION AND SIZE MAY VARY PER CEILING LAYOUT AND BUILDING SIZE

NOTE:  
WHERE TWO OR MORE HVAC UNITS SERVE A COMMON SPACE, UNITS SHALL BE EQUIPPED WITH DUCT SMOKE DETECTOR FOR AUTO SHUTDOWN. INTERCONNECT WITH FIRE ALARM SYSTEM  
AUTOMATIC SHUT-OFF IS NOT REQUIRED WHEN ALL OCCUPIED ROOMS SERVED BY THE AIR HANDLING EQUIPMENT HAVE DIRECT ACCESS TO THE EXTERIOR AND THE TRAVEL DISTANCE DO NOT EXCEEDS 100 FT. PER CMC 609 EXEPTION #2

EXHAUST FAN						
MARK	DESCRIPTION	CFM	WATTS	S.P.	VOLT/PH	
EF 1	EXHAUST FAN	110	1050	.10"	115-1Ø	NUTONE 672 CEILING MOUNTED 180W INPUT
EF 2	EXHAUST FAN	200	1050	.10"	115-1Ø	CEILING MOUNTED 180W INPUT

BUILDING PLUMBING STANDARDS:

1. TOILETS SHALL BE KOHLER-KINGSTON #K-4330. FLUSH VALVES FOR TOILETS SHALL BE SLOAN-REGAL FLUSHOMETER #111. MOUNTING BRACKET BY J.R SMITH. SEATS SHALL BE BEMIS #1955C.
2. TOILETS MAY BE ALSO BE AMERICAN STANDARD AFWALL #2257.103. MOUNTING BRACKET BY J.R. SMITH #0600. FLUSH VALVES FOR TOILETS SHALL BE SLOAN-REGAL FLUSHOMETER #111. SEATS SHALL BE BEMIS #1955C.
3. LAVATORIES SHALL BE CAST IRON PORCELAIN FINISHED KOHLER-HUDSON #K-2861. STAFF LAVATORIES SHALL BE CHICAGO 3300-CP FAUCETS. STUDENT LAVATORIES SHALL BE CHICAGO 3400-CP FAUCETS. P-TRAP MAY BE DEARBORN BRASS COMPANY #704 ASSEMBLY OR EQUAL 17 GA. P-TRAP. COMPRESSION STOPS MAY BE BRASSCRAFT #OCR 19 CS OR EQUAL. PROVIDE STAINLESS STEEL BRAIDED CONNECTORS AT LEAST 16" LONG. MOUNTING BRACKETS SHALL BE J.R. SMITH #0800.



3 TYPICAL REFLECTED CEILING PLAN  
M1 1/4"=1'-0" OPTION #3

BASED ON PC# 02-109808

REVISIONS		
NO	DATE	DESCRIPTION

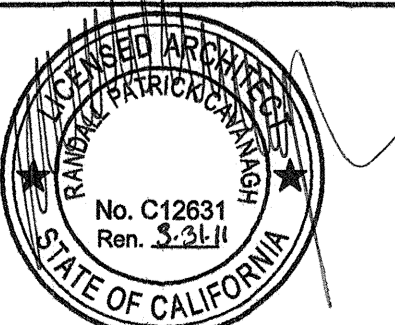
DATE: 01/13/10  
SCALE: NOTED  
DRAWN BY: RS  
SERIAL NO.:

CUSTOMER:  
BAKERSFIELD SCHOOL DISTRICT  
MUNSEY ELEMENTARY SCHOOL

12'X40' RELOCATABLE BUILDING  
TYPICAL CEILING PLAN & NOTES

787 Spreckels Ave. Manteca, CA 95336  
(209)925-1921 Fax: (209)925-7018  
americanmodular.com

APPROVALS:



IDENTIFICATION STAMP  
DIV. OF THE STATE ARCHITECT  
OFFICE OF REGULATION SERVICES  
02-112925  
AC. FLS. SS  
DATE 2/10/10

PROJECT No.  
M1

THESE DRAWINGS AND SPECIFICATIONS ARE THE PROPERTY OF AMERICAN MODULAR SYSTEMS, INC. AND ARE NOT TO BE REPRODUCED, CHANGED OR COPIED IN ANY FORM OR MANNER, NOR ARE THEY TO BE ASSIGNED TO ANY THIRD PARTY WITHOUT THE WRITTEN AUTHORIZATION OF AMERICAN MODULAR SYSTEMS, INC.