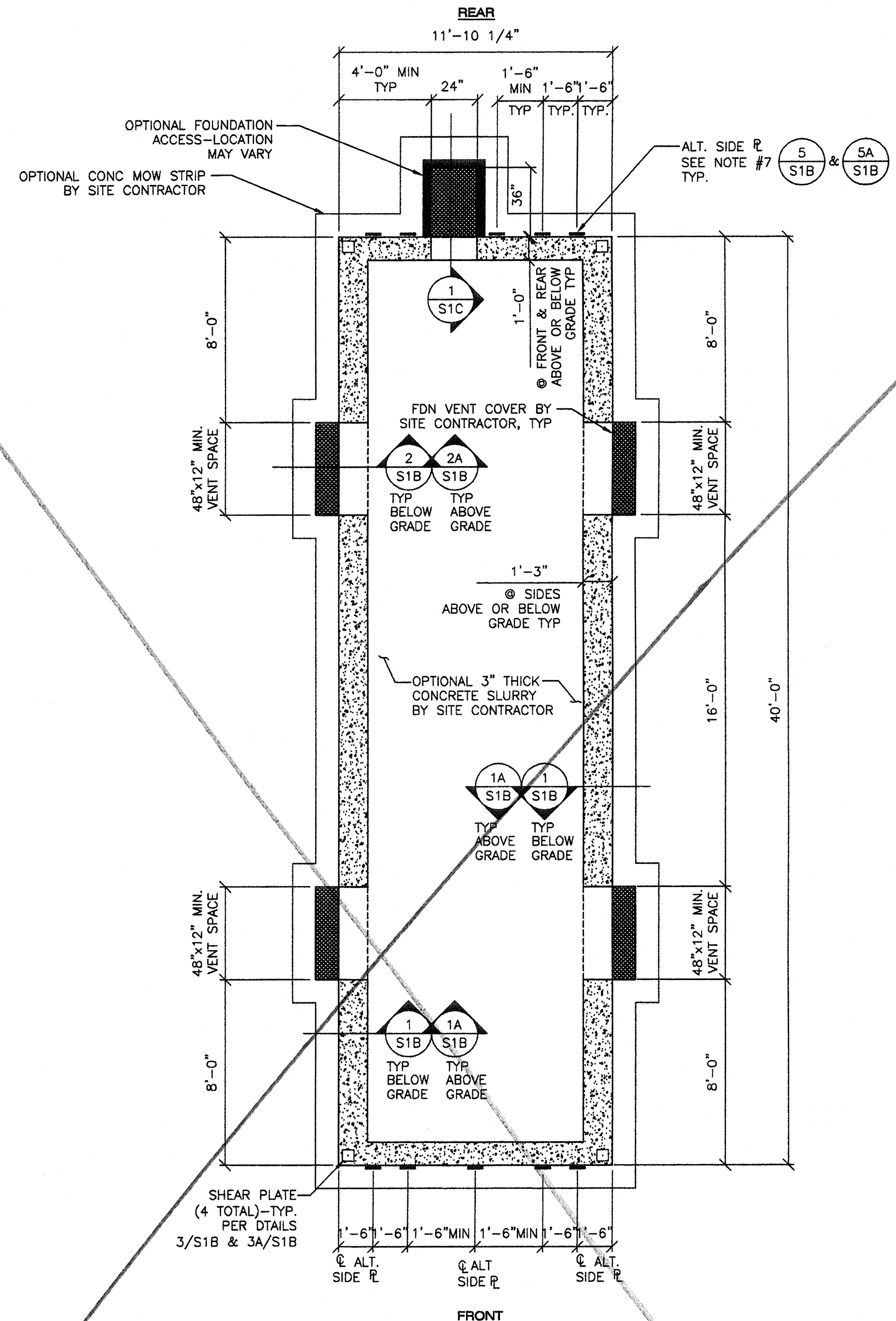


A FOUNDATION PLAN (ABOVE/BELOW GRADE)
S1A 1/4"=1'-0"
 (50 PSF FLOOR LIVE LOAD PLUS 15 PSF PARTITION LOAD)

NOTES:

- DO NOT INSTALL BUILDING IN AREAS OF WATER FLOW LINES.
- ULTIMATE 28-DAY CONCRETE COMPRESSIVE STRENGTH SHALL BE 2500 PSI MIN. PROPORTIONED PER TITLE 24, PART 2, SECTION 1905A.3 OR 1905A.4
- THE REINFORCING BARS MUST BE TESTED PER TITLE 24, PART 2, SECTION 1916A.2 IF CONCRETE WITH A COMPRESSIVE STRENGTH OF 3500 PSI IS SPECIFIED THEN THE TESTING OF THE REINFORCING BARS MAY BE WAIVED PER SECTION 1916A.4. THE CEMENT SHALL BE CERTIFIED PER SECTION 1916A.1
- REINFORCING STEEL 40,000 PSI MINIMUM, PER ASTM A615
- MINIMUM SOIL BEARING CAPACITY 1500 PSF.
- DESIGN SOIL BEARING CAPACITY 1500 PSF.
- ALTERNATE SIDE PLATES MUST COMPLETELY REPLACE TYPICAL SHEAR PLATES ALONG ANY ONE 40' WALL. COMBINATION OF TYPICAL SHEAR PLATES AND SIDE PLATES ALONG ANY ONE 40' WALL LINE IS NOT PERMITTED.
- MINIMUM BUILDING SEPARATION IS 6".



B FOUNDATION PLAN (ABOVE/BELOW GRADE)
S1A 1/4"=1'-0"
 (CONCRETE 125 PSF FLOOR LIVE LOAD)

NOTES:

- DO NOT INSTALL BUILDING IN AREAS OF WATER FLOW LINES.
- ULTIMATE 28-DAY CONCRETE COMPRESSIVE STRENGTH SHALL BE 2500 PSI MIN. PROPORTIONED PER TITLE 24, PART 2, SECTION 1905A.3 OR 1905A.4
- THE REINFORCING BARS MUST BE TESTED PER TITLE 24, PART 2, SECTION 1916A.2 IF CONCRETE WITH A COMPRESSIVE STRENGTH OF 3500 PSI IS SPECIFIED THEN THE TESTING OF THE REINFORCING BARS MAY BE WAIVED PER SECTION 1916A.4. THE CEMENT SHALL BE CERTIFIED PER SECTION 1916A.1
- REINFORCING STEEL 40,000 PSI MINIMUM, PER ASTM A615
- MINIMUM SOIL BEARING CAPACITY 1500 PSF.
- DESIGN SOIL BEARING CAPACITY 1500 PSF.
- ALTERNATE SIDE PLATES MUST COMPLETELY REPLACE TYPICAL SHEAR PLATES ALONG ANY ONE 40' WALL. COMBINATION OF TYPICAL SHEAR PLATES AND SIDE PLATES ALONG ANY ONE 40' WALL LINE IS NOT PERMITTED.
- MINIMUM BUILDING SEPARATION IS 6".

REVISIONS		
NO	DATE	DESCRIPTION

DATE: 02/21/08
 SCALE: NOTED
 DRAWN BY: RL
 SERIAL NO.:

CUSTOMER:
 12' x 40' RELOCATABLE BUILDINGS
 CONCRETE FOUNDATION PLAN
 50 PSF LIVE LOAD + 15 P.S.F. & 125 PSF



APPROVALS:
 THESE DRAWINGS ARE PRELIMINARY AND NOT FOR CONSTRUCTION UNLESS STAMPED & SIGNED BY THE ENGINEER OF RECORD.
 REGISTERED PROFESSIONAL ENGINEER
 Kenneth A. Luttrell
 No. 4418
 Exp. 3/31/11
 Structural Engineer
 State of California

IDENTIFICATION STAMP
 DIV. OF THE STATE ARCHITECT
 OFFICE OF REGULATION SERVICES
 C2-112985
 AC FLS SS
 DATE: 2/10/08

IDENTIFICATION STAMP
 DIV. OF THE STATE ARCHITECT
 OFFICE OF REGULATION SERVICES
 PC 02-109808
 AC FLS SS
 DATE: 2/10/08

PROJECT No.
S1A

THESE DRAWINGS AND SPECIFICATIONS ARE THE PROPERTY OF AMERICAN MODULAR SYSTEMS, INC. AND ARE NOT TO BE REPRODUCED, CHANGED OR COPIED IN ANY FORM OR MANNER, NOR ARE THEY TO BE ASSIGNED TO ANY THIRD PARTY WITHOUT THE WRITTEN AUTHORIZATION OF AMERICAN MODULAR SYSTEMS, INC.